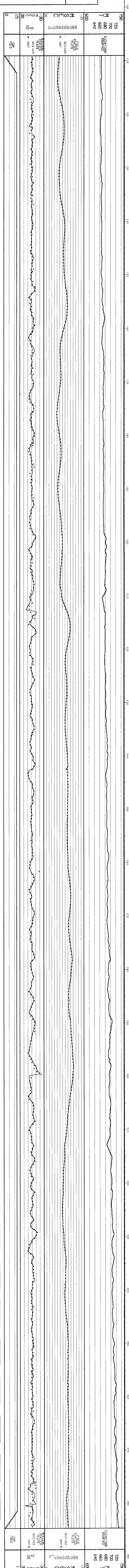


**LINE P81-GE-5A**  
**SP. 1740-782**

**MAGELLAN PETROLEUM AUSTRALIA LTD**  
**GEN EDITH SURVEY**  
**OP 178, AMADEUS BASIN, N.T.**

**PRE STACK MIGRATION / STACK**



**FIELD DATA**

DATE COLLECTED BY: S. J. MARY 1988  
 FIELD NO.: 178  
 SURVEY NO.: 178  
 OPERATOR: GEOPHYSICAL SERVICE INC.  
 PROJECT: GEN EDITH SURVEY  
 OPERATOR: S. J. MARY  
 SURVEY NO.: 178  
 OPERATOR: S. J. MARY

**DIGITAL PROCESSING**

CONVERSION OF ANALOG TO DIGITAL  
 FILTERING  
 CORRECTION OF TILT  
 CORRECTION OF SLOPE  
 CORRECTION OF CURVATURE  
 CORRECTION OF DISTORTION  
 CORRECTION OF VELOCITY  
 CORRECTION OF AMPLITUDE  
 CORRECTION OF PHASE  
 CORRECTION OF FREQUENCY  
 CORRECTION OF TIME

**DISPLAY**

AMPLITUDE SCALE: 1000 μV  
 VELOCITY SCALE: 1000 m/s  
 TIME SCALE: 1000 ms  
 GAIN: 1000

**GEOPHYSICAL SERVICE INC.**  
 (A DIVISION OF TEXAS INSTRUMENTS LTD)

