

LINE P81-GE10  
VP. 301-741

MAGELLAN PETROLEUM AUSTRALIA LTD  
TARAUARRA SURVEY  
OP 178, AMADEUS BASIN, N.T.

PRE-STK MIGRATION/DMO STK

FIELD DATA  
DATA COLLECTED BY: G.S. 1. PARTY 1988  
INSTRUMENTS: 5000 HZ (18/72 ADV/CT)  
RECORDING POLARITY: CASE 8 (18/72 ADV/CT)  
DIGITAL FILTER: 1000 BT, 8 KHZ, 8 KHZ  
ANALOG FILTER: 1000 BT, 8 KHZ, 8 KHZ  
SAMPLE RATE: 24 SEC SKEW, 4 SEC LISTEN  
SERIAL NO: 1289  
SERIAL NO: 1289 - 178 - 178 - 1289  
SERIAL NO: 1289 - 178 - 178 - 1289  
DATE RECORDED: JUN 28 1988 AND JUL 04 1988  
DATE RECORDED: JUN 28 1988 AND JUL 04 1988  
SOURCE: ARMY  
SHEET: 1289  
RECEIVER DATA: 24 ELEMENTS IN LINE  
GEOGRAPHIC AREA: 1289 P81 TO P40 52 N ARMY  
SHEET: 1289  
SOURCE: ARMY

DIGITAL PROCESSING  
HAND INTERPRETTED WITH THE REPARATIONS  
REFLECTION VELOCITY: 3800 M/SEC  
PRE-DECONVOLUTION WAVE  
VELOCITY FILTERING

FIELD TIME TRANSFORMATION  
CONVERSION TO SIMULANEOUS PHASE  
RETRACTED VELOCITY: 3800 M/SEC  
PRE-DECONVOLUTION WAVE  
VELOCITY FILTERING

VELOCITY ANALYSIS  
NORMAL MOVEOUT CORRECTION  
APPLICATION OF DATER AND  
RESIDUAL STATICS  
PRE STACK MOVE  
COR CONSISTENT WITH DATA

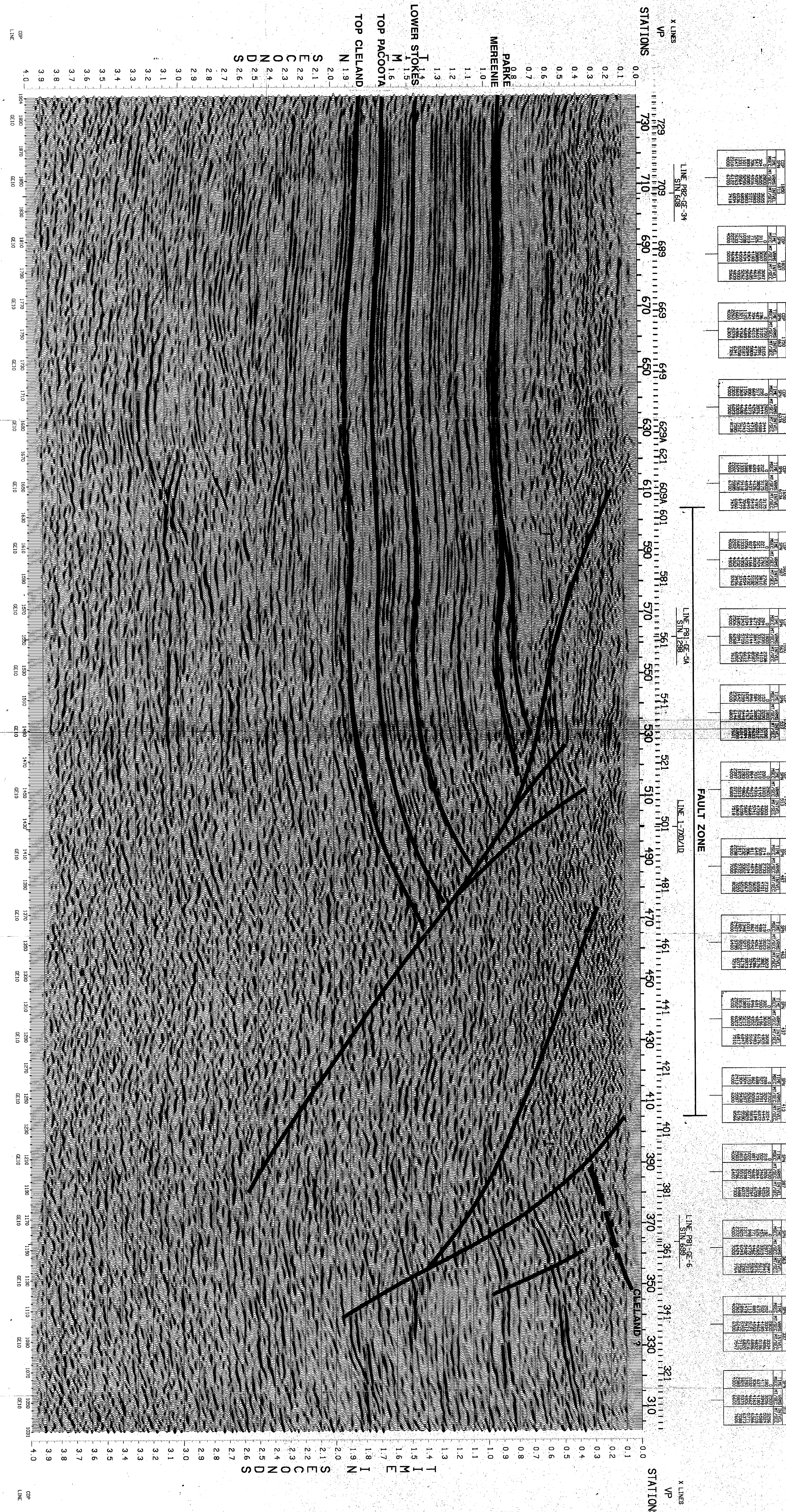
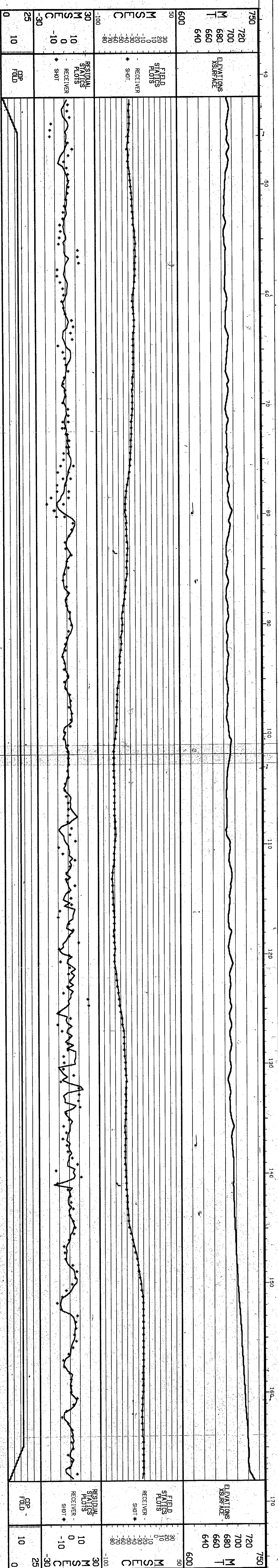
COMMON OFFSET GATHERING  
TRACE CORRELATION  
TRACE INTERPOLATION  
EVENT ENHANCEMENT  
PRE-STACK MIGRATION

COMPARISON  
NORMAL MOVEOUT  
ZERO DIP VELOCITY ANALYSIS  
DIP MOVEOUT CORRECTION  
DIP MOVEOUT FILTER  
TIME VARIANT SCALING

DISPLAY  
HORIZONTAL SCALE: 1000 TR/CM @ 0.00 TR/KM  
VERTICAL SCALE: 1000 CM/SEC  
TRACE TYPE: 8148  
DISPLAY UNIT: 0.1 SEC/CM  
MAGNITUDE: 0.1 SEC/CM  
MAGNITUDE: 0.1 SEC/CM

11 SEP 1987  
GEOPHYSICAL SERVICE INC.  
A DIVISION OF TEXAS INSTRUMENTS LTD

USFOSP810-PT151 20 TWS7157P 0007 30 FRAME 001 OF 002



USFOSP810-PT151 20 TWS7157P 0007 30 FRAME 002 OF 002