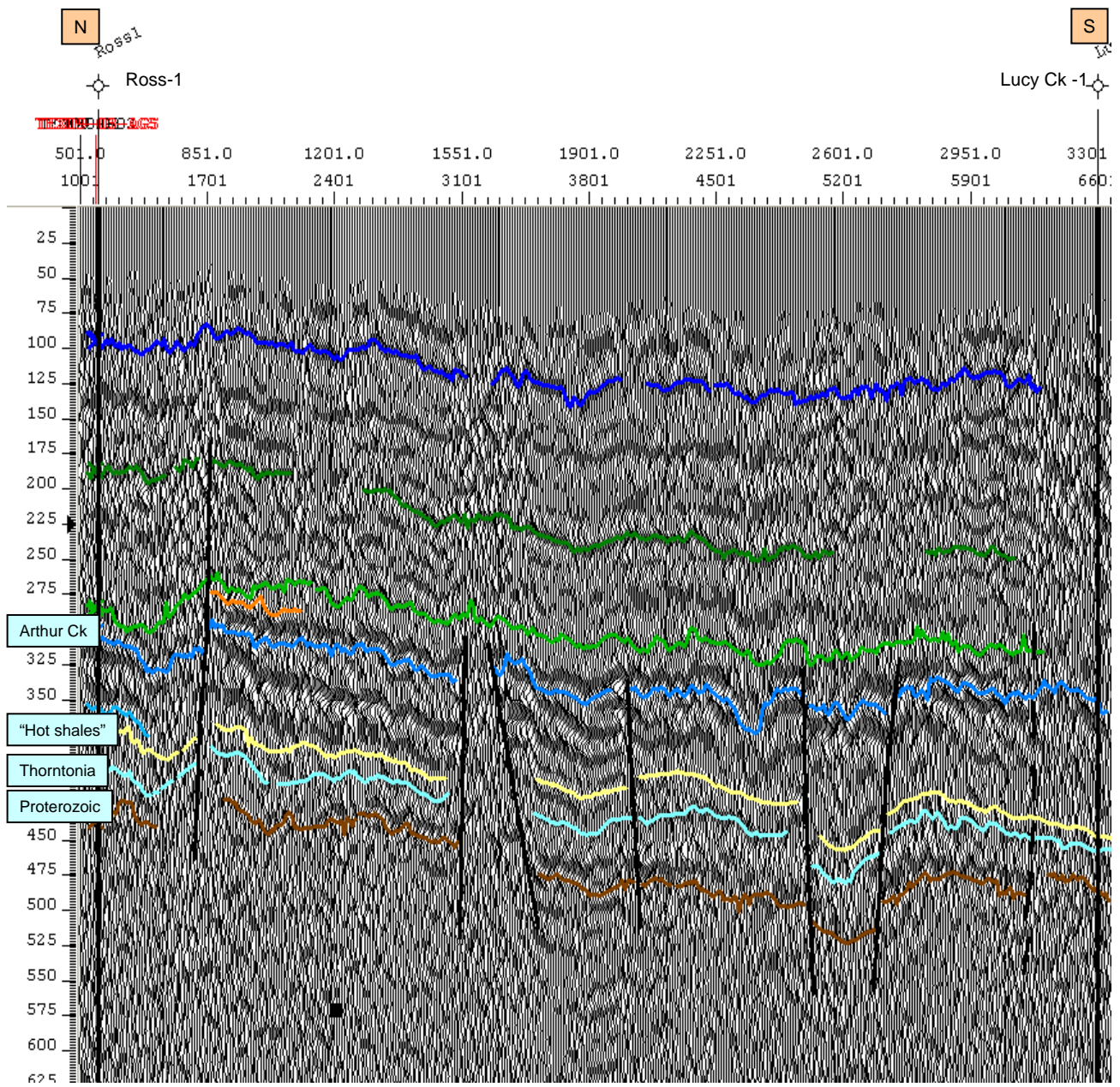


Georgina Basin Australia

Line TEX09-02

Note: this line is **Compressed**.
The line is 70 km long.



Georgina Basin Australia

Line TEX09-03

Note: this line is
Highly Compressed.
The line is 163 km long.

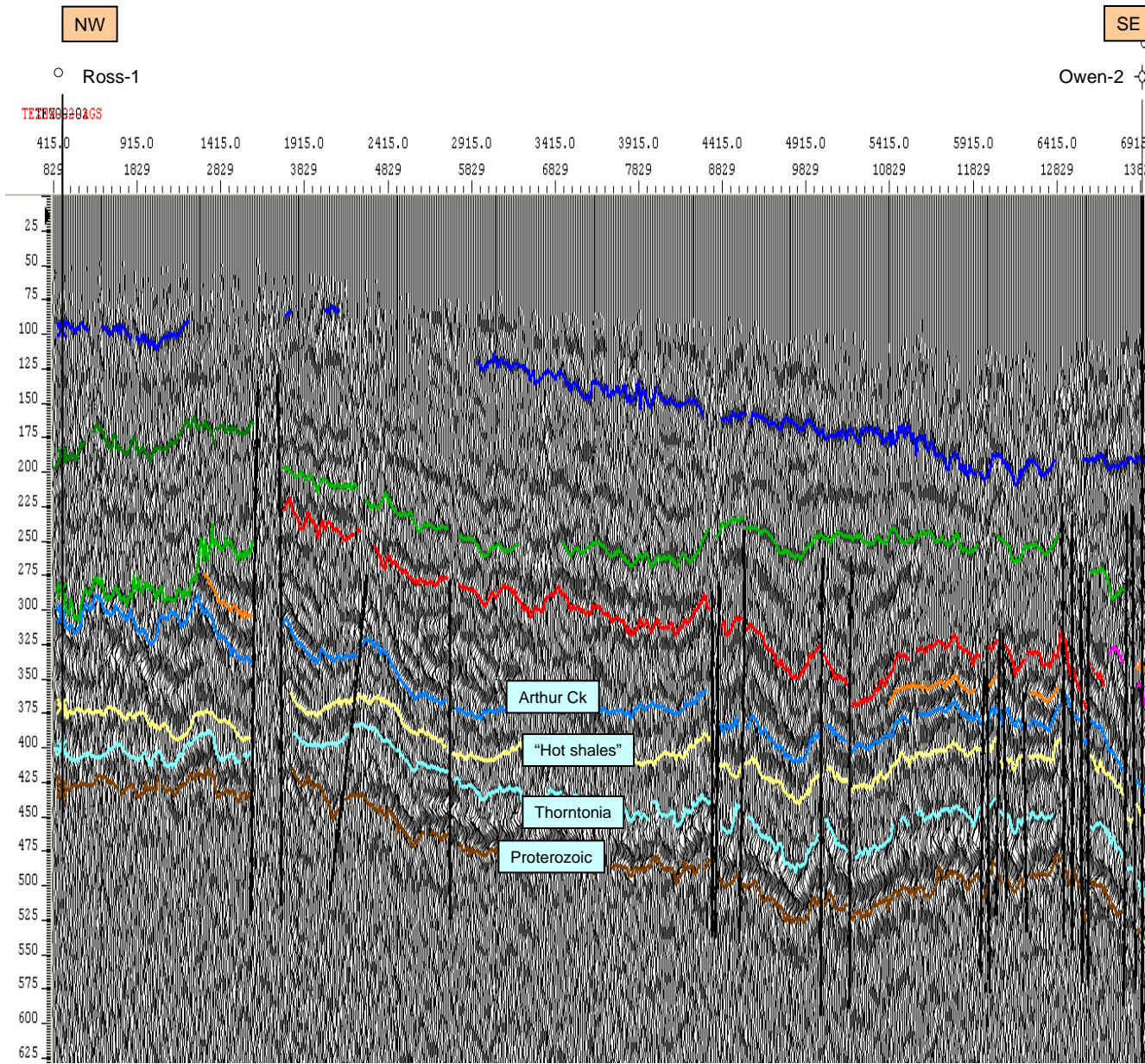


FIGURE 13

SEPTEMBER 17, 2009

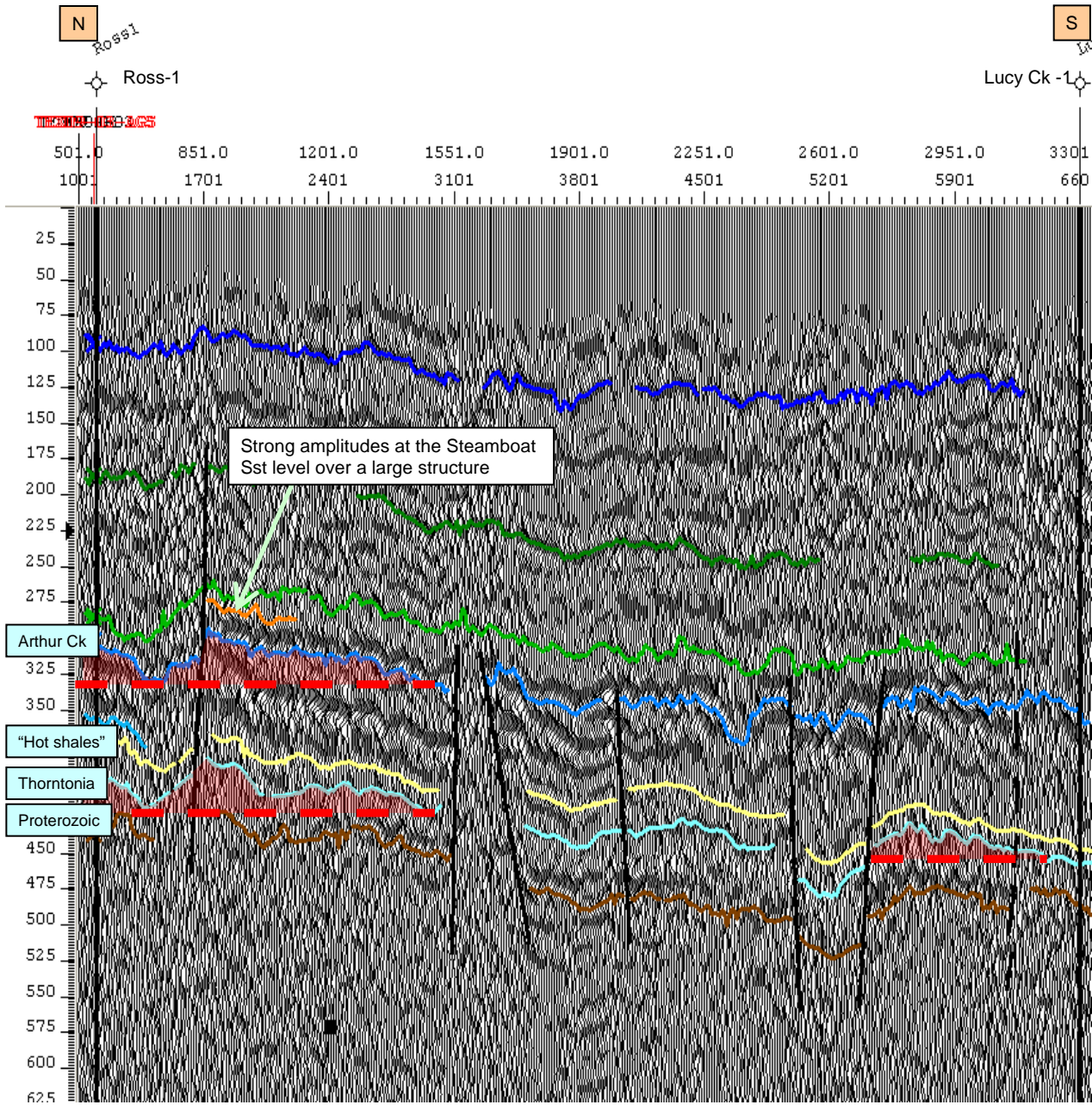
Boyd | PetroSearch

Georgina Basin Australia

Line TEX09-02

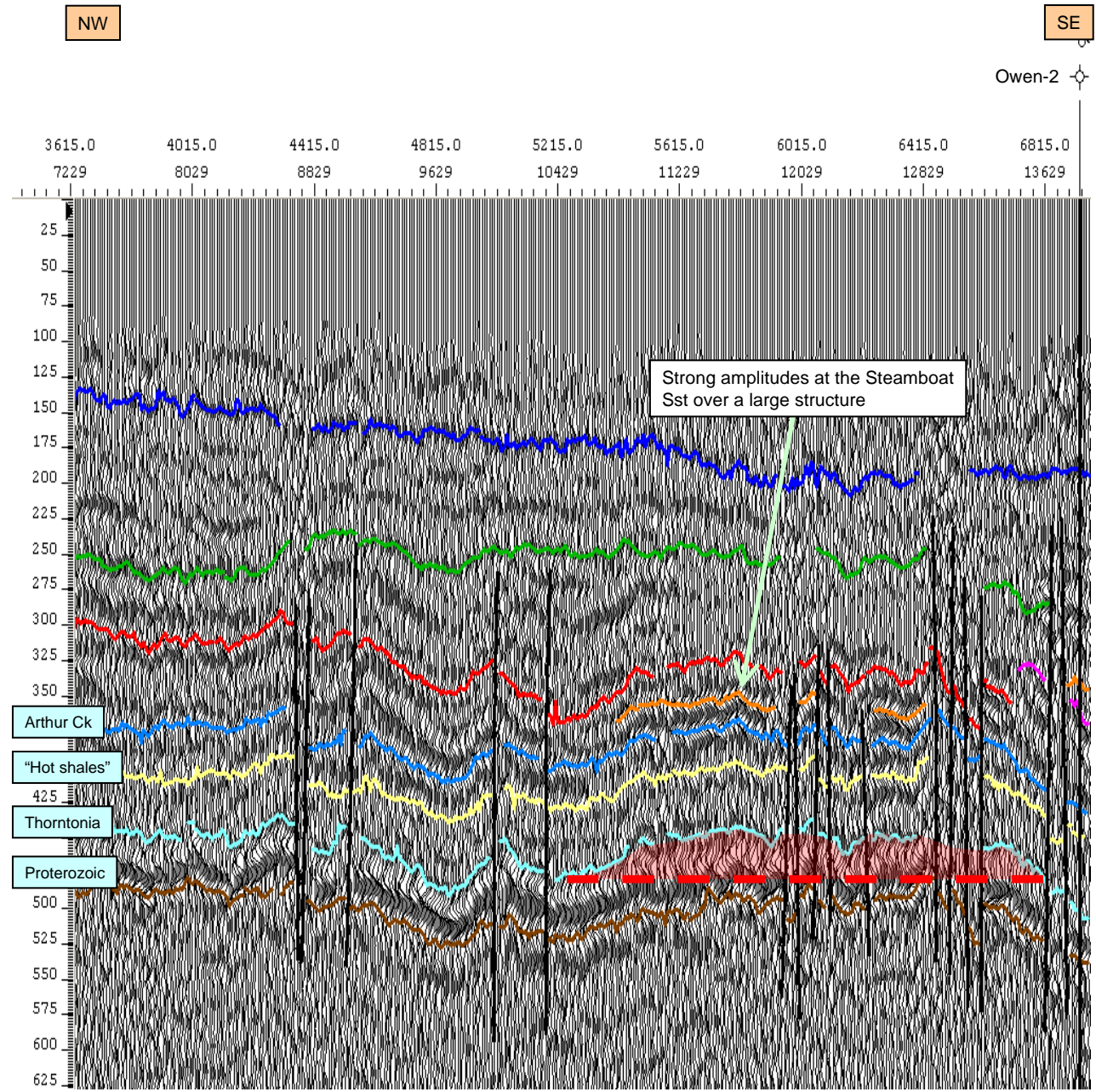
Note: this line is **Compressed**.
The line is 70 km long.

Large structures are seen at the Arthur Creek and Thorntonia. Closure cannot be demonstrated with the current sparse control, but more detailed seismic will certainly isolate many closed structures.



Georgina Basin Australia

Line TEX09-03 East End



Note: this line is **Compressed** the same as the previous slide. The segment is 84 km long.

Large structures are seen at the Arthur Creek and Thornton. Closure cannot be demonstrated with the current sparse control, but more detailed seismic will certainly isolate many closed structures.

Georgina Basin Australia

Line TEX09-03 West End

Note: this line is **Compressed** the same as the previous slide. The segment is 84 km long.

Large structures are seen at the Arthur Creek and Thorntonia. Closure cannot be demonstrated with the current sparse control, but more detailed seismic will certainly isolate many closed structures.

