

EL 30417
ANNUAL & FINAL REPORT
for period ended
April 1, 2016

1:250,000 map sheet: SE53-14, SF53-02 (Tennant Creek, Bonney Well)

Licensee: Red Metal Limited

G. McKay
Red Metal Limited
10 May 2016

TENEMENT REPORT INDEX

HOLDER / OPERATOR:	Red Metal Limited
TENEMENT:	EL 30417
REPORTING PERIOD:	April 2, 2015 to April 1, 2016
AUTHOR:	G. McKay
STATE:	NT
LATITUDE:	134° 45' to 134°470'
LONGITUDE:	-19° 46' to -19° 49'
1:250,000 SHEET:	SE53-14 (Tennant Creek)
1:100,000 SHEET:	5958 (Gosse River)
MINERAL PROVINCE:	Tennant Creek Inlier
COMMODITIES:	Cu Au
KEYWORDS:	Heliborne magnetic survey, soil geochemical sampling

COPYRIGHT

This report is the copyright of Red Metal Limited and is submitted under the NT *Minerals Act 2010*. Red Metal Limited authorises the NT Department of Mines and Energy to copy and distribute the report.

Table of Contents

SUMMARY.....	1
1.0 INTRODUCTION.....	2
2.0 LOCATION AND LAND USE	2
3.0 TENEMENT STATUS	2
3.0 TENEMENT GEOLOGY	2
4.0 HISTORICAL EXPLORATION.....	3
5.0 EXPLORATION PROGRAM	3
6.0 CONCLUSIONS.....	3

List of Tables

TABLE 1: TENEMENT DETAILS.....	2
--------------------------------	---

List of Figures

Figure 1	EL 30417 location	2
Figure 2	Regional TMI image.....	4
Figure 3	Interpreted regional geology.....	4
Figure 4	Soil sample locations on TMI image.....	5
Figure 5	Heliborne magnetic image.....	5

List of Digital Files

EL30417_2016_A_01_ReportBody.pdf
EL30417_2016_A_02_SoilGeochem.txt
EL30417_2016_A_03_Aeromag.gdf.zip

SUMMARY

EL 30417 was acquired to investigate aeromagnetic anomalies south-east of Tennant Creek within the Palaeoproterozoic basement rocks. The area is considered prospective for copper, gold and base metal mineralisation associated with Iron Oxide Copper Gold (IOCG) mineralising systems within the Proterozoic Warrumunga Formation.

The work carried out on EL 30417 comprised a heliborne magnetic survey in conjunction with other nearby areas and a soil geochemical sampling program. Geochemical assay results were disappointing and the company decided to surrender the licence to focus exploration on other tenements.

1.0 INTRODUCTION

This report summarises exploration activities undertaken over Exploration Licence 30417 since grant on April 2, 2015.

2.0 LOCATION AND LAND USE

EL 30417 is located 65 km east of Tennant Creek (figure 1). Access is via unsealed roads and tracks through Warumungu Aboriginal Land.

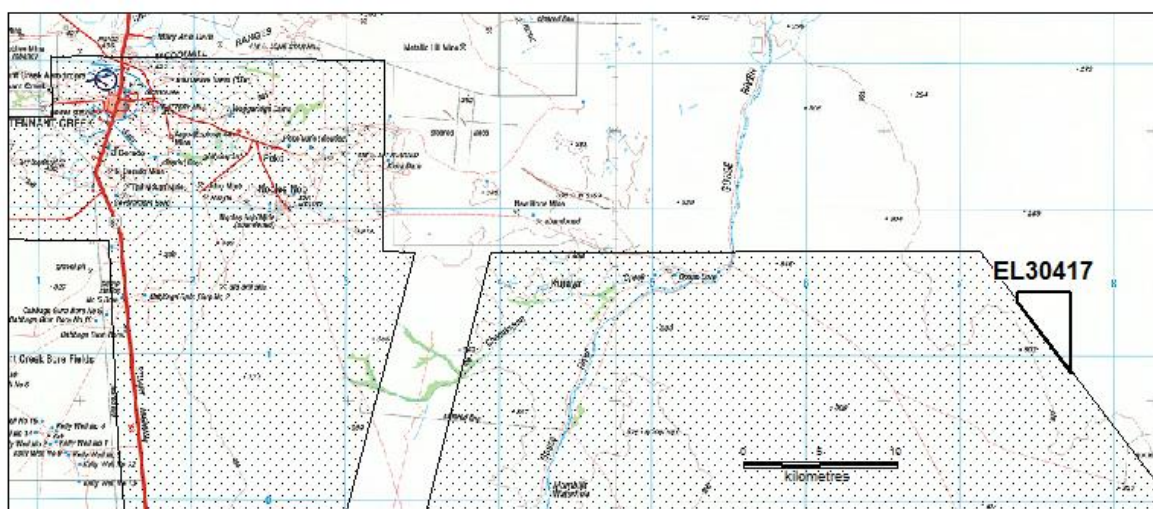


Figure 1: EL 30417 location showing Warumungu Aboriginal Land (stipled)

3.0 TENEMENT STATUS

EL 30417 was granted to Red Metal Limited on 2 April 2015 over 5 blocks for a period of six years.

Details of EL 30417 are shown in Table 1. Location of the tenement is shown in Figure 1.

Table 1: Tenement Details

TENEMENT	HOLDER	GRANTED	SURRENDER	Blocks
EL 30417	Red Metal Limited	April 2, 2015	April 2, 2016	5

3.0 TENEMENT GEOLOGY

The area is considered prospective for copper, gold and base metal mineralisation associated with Iron Oxide Copper Gold (IOCG) mineralising systems within the Proterozoic Warrumunga Formation.

The tenement is covered mostly by thin unconsolidated Cainozoic sediments which overly Cambrian units (chert, limestone, calcimudstone). Palaeoproterozoic basement units are considered to be the source of the magnetic and gravity anomalies and the potential host to ironstone associated gold-copper mineralisation.

4.0 HISTORICAL EXPLORATION

Field exploration within the area of EL 30417 was conducted by the following companies for copper-gold.

The exploration targets were airborne magnetic anomalies. Activities included airborne surveys, ground magnetic surveys, rock chip sampling, auger, percussion and diamond drilling.

Licence	Years	Company	Reports
EL5024	1988-90	Peko-Wallsend Operations	CR1988-0031, CR1989-0124, CR1989-0277, CR1990-0258
EL5088	1989	Peko-Wallsend Operations	CR1989-0559
EL5356	1990	Peko-Wallsend Operations	CR1990-0608

5.0 EXPLORATION PROGRAM

Red Metal conducted a review of available airborne data and historic reports. No field work was conducted on EL 30417 while programs were conducted on adjacent tenements with a view to extending programs on to EL 30417 depending on results.

6.0 CONCLUSIONS

EL 30417 was acquired to investigate airborne magnetic features under shallow cover south-east of Tennant Creek targeting both magnetite and hematite associated copper-gold mineralisation.

The work carried out on EL 30417 comprised a heliborne magnetic survey of approximately 150 line km at 50m E-W line spacing, in conjunction with surveys on other nearby areas. A soil geochemical sampling program of two lines (27 samples) over magnetic features was conducted (Figures 4 & 5). The soil sampling assay results were disappointing with uniformly low assay values.

Red Metal decided to surrender the licence and focus exploration on other tenements.

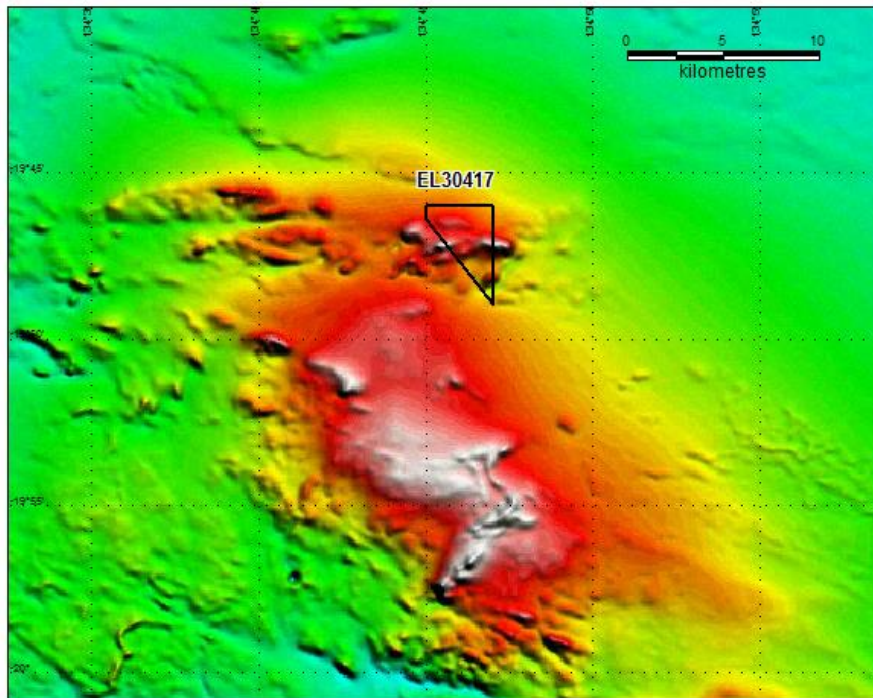


Figure 2: EL 30417 regional TMI image

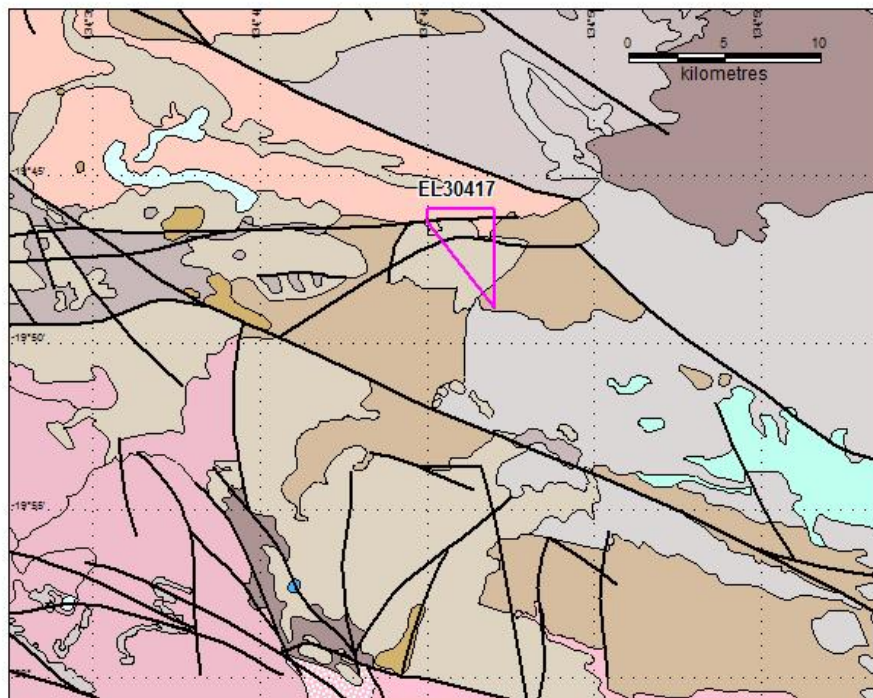


Figure 3: EL 30417 interpreted geology 1:500,000 (NTGS)

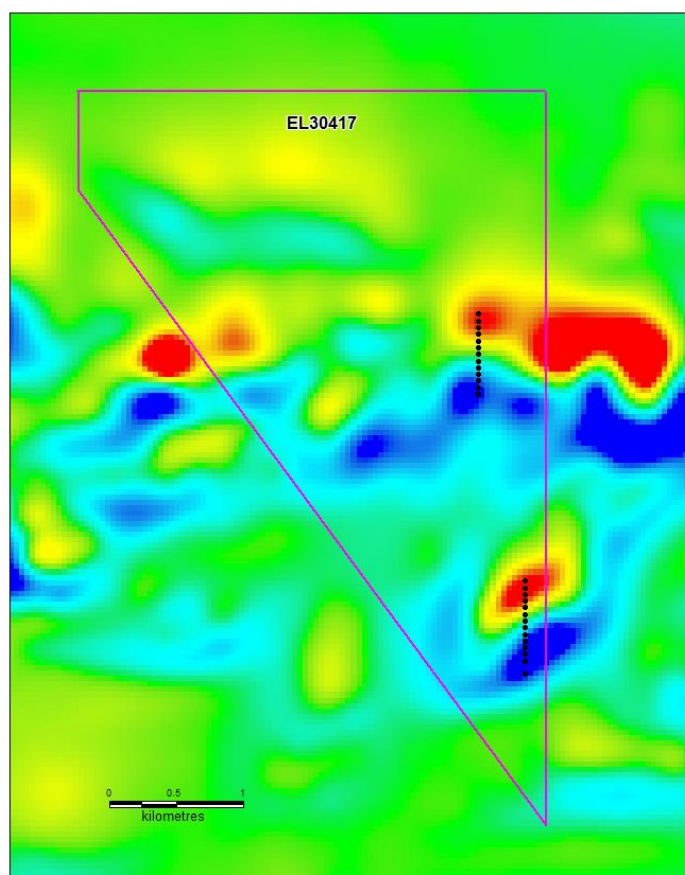


Figure 4: EL 30417 soil sampling locations on TMI image

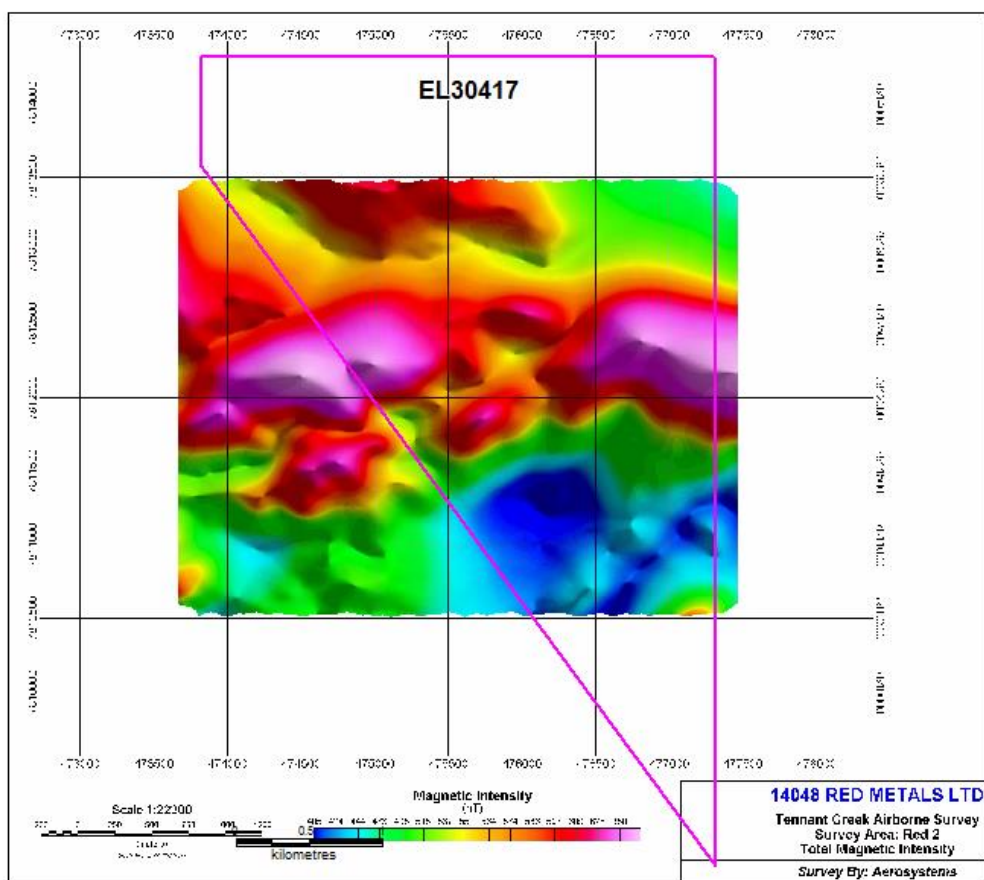


Figure 5: EL 30417 heliborne magnetic image