

BARRICK GOLD OF AUSTRALIA LIMITED

(ABN 008 143 137)

PROJECT 8440
TANAMI (NT) JV

BIRRINDUDU

EL 5889, EL 23472

ANNUAL REPORT

Period 1 January 2003 – 31 December 2003

VERIFICATION REPORT

TECHNICAL REPORT No. 1118

MAP SHEET: SE52-11 (Birrindudu)

DISTRIBUTION:

1. BGAL – Perth 8440.
2. BGAL – Archive 8440.
3. BGAL – Tanami Exploration Office
4. Tanami Gold NL
5. Central Land Council
6. NT DBIRD

Graeme Purcell

February 2004

This Report, including all text, plans designs and photographs, is the subject of copyright and is also confidential. Save as permitted by the Copyright Act 1968, no part of the report or its contents may be reproduced, copied, used or disclosed, other than in accordance with Regulation 96 of the Mining Act without prior written permission of Barrick Gold of Australia Limited

1.0 SUMMARY

The Birrindudu Project comprises Exploration Licences (EL) 5889 and 23472 and forms part of the Tanami (NT) JV, a Joint Venture agreement between Tanami Gold NL (TGNL) and Barrick Gold of Australia Limited (BGAL). The tenements were granted during 2002-2003 for a period of six years.

Work conducted on EL 5889 includes detailed airborne magnetic, radiometric and digital elevation survey, detailed data compilation and interpretation, geological field mapping, rock-chip sampling and lag sampling. These activities are summarised and illustrated in [Figure 1](#). Field work on EL 23472 was not able to be commenced as the access agreement with the Central Land Council is still pending.

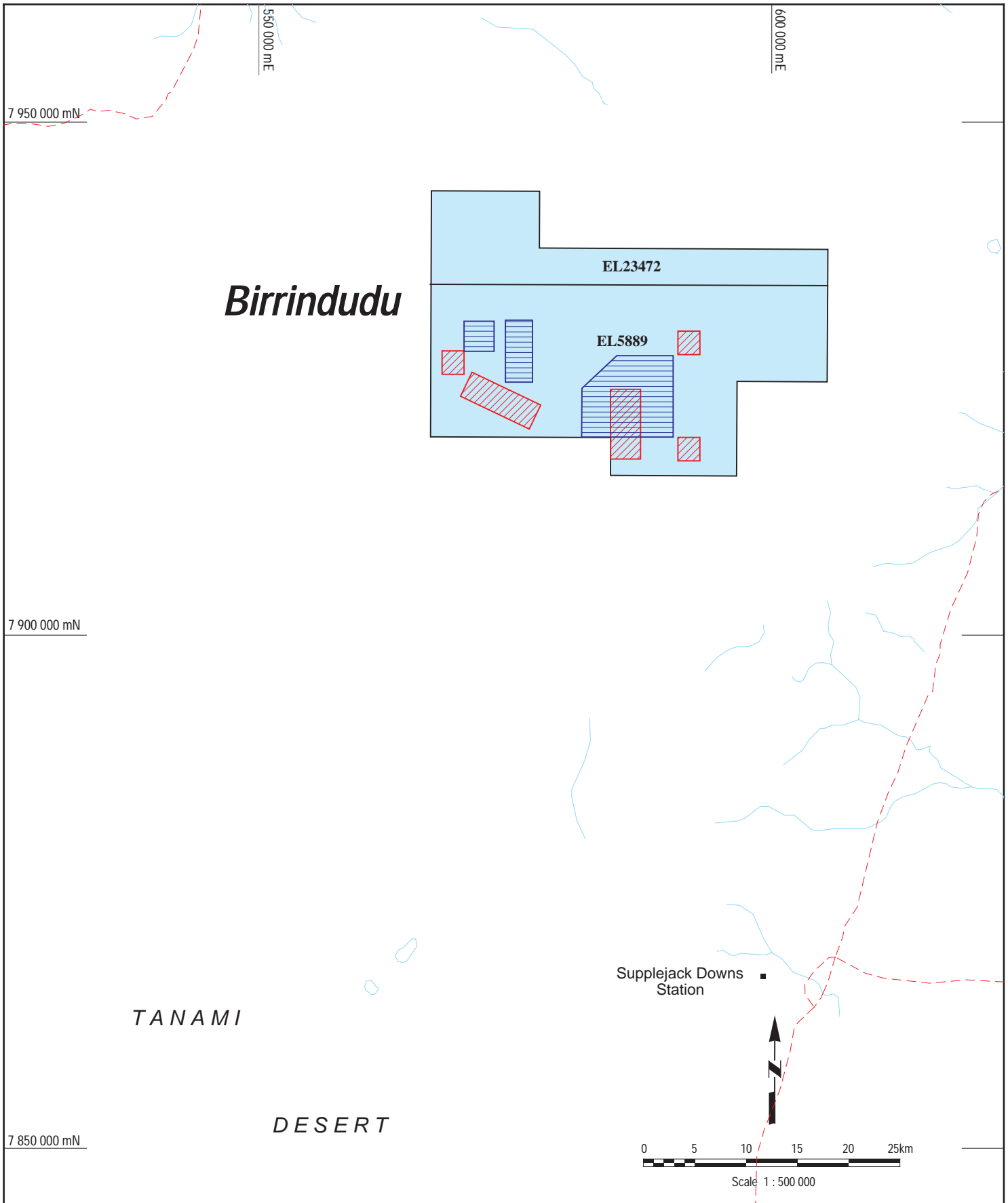


BARRICK GOLD OF AUSTRALIA LIMITED




ACTIVITY SUMMARY TABLE

Project: Tanami (NT) JV - Birrindudu


Tenements	Drilling					Surface Sampling			Mapping Type & Scale			Geophysics	Compilation Work			
Tenement Group Totals		DDH	RC	RAB	AC	No.	Auger	Lag	Rock Chip	Geology	Regolith	Structure	Type	Data Reviews		
	Holes						230	152						<i>Open File</i>	<i>Annual Report</i>	
	Metres						Ag Al As Au B Ba Be Bi Ca Cd Ce Co Cr Cu Fe Ga Hf Hg K La Mg Mn Mo Na Nb Ni P Pb Pd Pt S Sb Sc Sr Te Th Ti U V W Zn Zr							Line KM	Interpretation	
	Elements														<i>Sections</i>	<i>Soils</i>
Tenement No. EL 5889		DDH	RC	RAB	AC	No.	Auger	Lag	Rock Chip	Geology	Regolith	Structure	Type	Data Reviews		
Holes					230		152		<i>Open File</i>					<i>Annual Report</i>		
Metres					Ag Al As Au B Ba Be Bi Ca Cd Ce Co Cr Cu Fe Ga Hf Hg K La Mg Mn Mo Na Nb Ni P Pb Pd Pt S Sb Sc Sr Te Th Ti U V W Zn Zr			Line KM	Interpretation							
Elements														<i>Sections</i>	<i>Soils</i>	
Tenement No.		DDH	RC	RAB	AC	No.	Auger	Lag	Rock Chip	Geology	Regolith	Structure	Type	Data Reviews		
Holes														<i>Open File</i>	<i>Annual Report</i>	
Metres								Line KM	Interpretation							
Elements														<i>Sections</i>	<i>Soils</i>	
Tenement No.		DDH	RC	RAB	AC	No.	Auger	Lag	Lag	Geology	Regolith	Structure	Type	Data Reviews		
Holes														<i>Open File</i>	<i>Annual Report</i>	
Metres								Line KM	Interpretation							
Elements														<i>Sections</i>	<i>Soils</i>	



Legend

-  Airborne Geophysical Survey
-  Area of LAG sampling
-  Area of Rock Chip sampling

Projection Based on AGD84 (Zone 52)



BARRICK
AUSTRALIA

BIRRINDUDU
EXPLORATION INDEX MAP

Project: 8440 - TANAMI (NT) JV

Originator: G.P.	Date Drawn: Feb 2004	Scale: 1 : 500 000	Technical Report No. 1118
Drawn By: D.F.B.	Revised:		

Ref : FILE: K:\drafting\tanamitaten022.dgn
DATE: 20-Feb-02 09:03

Figure No.: 1

TEMPLATE 7 - VERIFICATION LISTING FORM

Exploration Work Type	File Name	Format
Office Studies		
Literature search		
Database compilation		
Computer modelling		
Reprocessing of data		
Report	tr1118_A_2004	pdf
Airborne Exploration Surveys		
Aeromagnetics		
Radiometrics		
Electromagnetics		
Gravity		
Digital terrain modelling		
Other (specify)		
Remote Sensing		
Aerial photography		
LANDSAT		
SPOT		
MSS		
Radar		
Other (specify)		
Ground Exploration Surveys		
Geological Mapping		
Regional		
Reconnaissance		
Prospect		
Underground		
Costean		
Ground geophysics		
Radiometrics		
Magnetics		
Gravity		
Digital terrain modelling		
Electromagnetics		
SP/AP/EP		
IP		
AMT		
Resistivity		
Complex resistivity		
Seismic reflection		
Seismic refraction		
Well logging		
Geophysical interpretation		
Other (specify)		
Geochemical Surveying		
Surface Geochemistry	Tr1118geochem	WA SG2
Stream sediment		
Soil		
Rock chip		
Laterite		
Water		
Biogeochemistry		
Isotope		
Whole rock		
Mineral analysis		
Other (specify)		
Drilling		
Data Dictionary		
Collar		
Assay		
Survey		
Lithology		
Events		
Recovery		
Magnetic Susceptibility		
Quartz		
Water		
Translation		
Alteration		
Vein		
Structure		
Drill		