



Weatherford
LABORATORIES

CORE OPERATIONS

CORE RUN: 1A

Date: 28/8/2009

OPERATOR: Falcon Oil and Gas Australia
WELL: Shenandoah #1
FIELD / PROSPECT:
COUNTRY: Australia
REGION: Northern Territory

LAT: / LONG: Lat: 16° 37' 22.16" S / Long: 133°34' 38.22" E
SECTION: N/A
TOWNSHIP: N/A
RANGE: N/A
ELEV (M): GL: 226.8 m; KB: 232.6 m
Datum: KB

OPERATOR: Falcon Oil and Gas Australia

RIG: Australian Drilling Services Rig #6
SERVICE: Baker Hughes Inteq Coring Service
Baker Hughes Inteq Surface Logging

Core Service Company: Baker Hughes Inteq
Core Bit Type: URC - 427
Core Bit Size¹: 21.59cm / 10.16cm
8.5" / 4.0"
Core Barrel Type: 9 m
Liner Type: 9 m Solid Fiber Glass
Coring Fluid: Water-based Mud
Fluid Density (ppg): 8.4
Fluid Temp. In (°C/°F): 43.2
Fluid Temp. Out (°C/°F): 44.5
Pump Pressure (psi): 457.0
Pump Rate (gpm): 300
Weight on Bit (lbs): 8,000 - 17,000
Pipe Rotation Rate (rpm): 66
Type Core
(Oriented/Non-Oriented): Non-Oriented
Formation Name: Lower Kyalla Shale
Method for TOH: Conventional
Date/Time Start Coring: 8/28/2009 13:02:00
Date/Time End Coring: 8/28/2009 21:24:00
Date/Time Start TOH: 8/28/2009 22:00:00
Date/Time Last Stand
at Surface: 8/29/2009 05:43:00
Core Barrel Trip Out Time
(hh:mm:ss): 7:43:00
Interval Cored (m): 1,585.00 - 1,595.55
Core Length Recovered (m): 10.55
Reservoir Temp (°C):
Reservoir Temp (°F):
Surf. Temp/Press (°C/in-Hg): 22.9 / 29.26
Surf. Temp/Press (°F/in-Hg): 73.2 / 29.26

CORE RUN: 1A								
Top Depth	Bottom Depth	Start	End	Penetration Rate	Canister	Can Sealed Date/Time	Sample	
meters, KB	meters, KB	hh:mm:ss	hh:mm:ss	mm:ss	No.	date hh:mm:ss	No.	
0.2	1,585.0	1,585.2	13:02:00	13:10:00	08:00			
0.4	1,585.2	1,585.4	13:10:00	13:32:00	22:00			
0.6	1,585.4	1,585.6	14:12:00	14:32:00	20:00			
0.8	1,585.6	1,585.8	14:32:00	14:44:00	12:00			
1.0	1,585.8	1,586.0	14:44:00	14:48:00	04:00	#N/A	#N/A	44569-1A
1.2	1,586.0	1,586.2	14:48:00	14:51:00	03:00	#N/A	#N/A	44569-1B
1.4	1,586.2	1,586.4	14:51:00	14:56:00	05:00			
1.6	1,586.4	1,586.6	14:56:00	15:01:00	05:00			
1.8	1,586.6	1,586.8	15:01:00	15:06:00	05:00			
2.0	1,586.8	1,587.0	15:06:00	15:11:00	05:00			
2.2	1,587.0	1,587.2	15:11:00	15:14:00	03:00			
2.4	1,587.2	1,587.4	15:14:00	15:19:00	05:00			
2.6	1,587.4	1,587.6	15:19:00	15:25:00	06:00			
2.8	1,587.6	1,587.8	15:25:00	15:30:00	05:00			
3.0	1,587.8	1,588.0	15:30:00	15:36:00	06:00			
3.2	1,588.0	1,588.2	15:36:00	15:40:00	04:00			
3.4	1,588.2	1,588.4	15:40:00	15:43:00	03:00			
3.6	1,588.4	1,588.6	15:43:00	15:48:00	05:00			
3.8	1,588.6	1,588.8	15:48:00	15:52:00	04:00			
4.0	1,588.8	1,589.0	15:52:00	15:56:00	04:00			
4.2	1,589.0	1,589.2	15:56:00	16:02:00	06:00			
4.4	1,589.2	1,589.4	16:02:00	16:07:00	05:00			
4.6	1,589.4	1,589.6	16:07:00	16:12:00	05:00			
4.8	1,589.6	1,589.8	16:12:00	16:18:00	06:00			
5.0	1,589.8	1,590.0	16:18:00	16:26:00	08:00			
5.2	1,590.0	1,590.2	16:26:00	16:37:00	11:00			
5.4	1,590.2	1,590.4	16:37:00	16:48:00	11:00			
5.6	1,590.4	1,590.6	16:48:00	17:03:00	15:00			
5.8	1,590.6	1,590.8	17:03:00	17:16:00	13:00			
6.0	1,590.8	1,591.0	17:16:00	17:32:00	16:00			

¹ Exterior and Interior Diameter (centimeters / inches)

NOTES: Connection made from 13:32 - 14:12

No pressure increase at the commencement of coring operations. Due to this weight, on bit was thought to be reaming. Operations continued and the decision was made to TOOH and check barrel and coring BHA at 22:00 on 8/29/09.

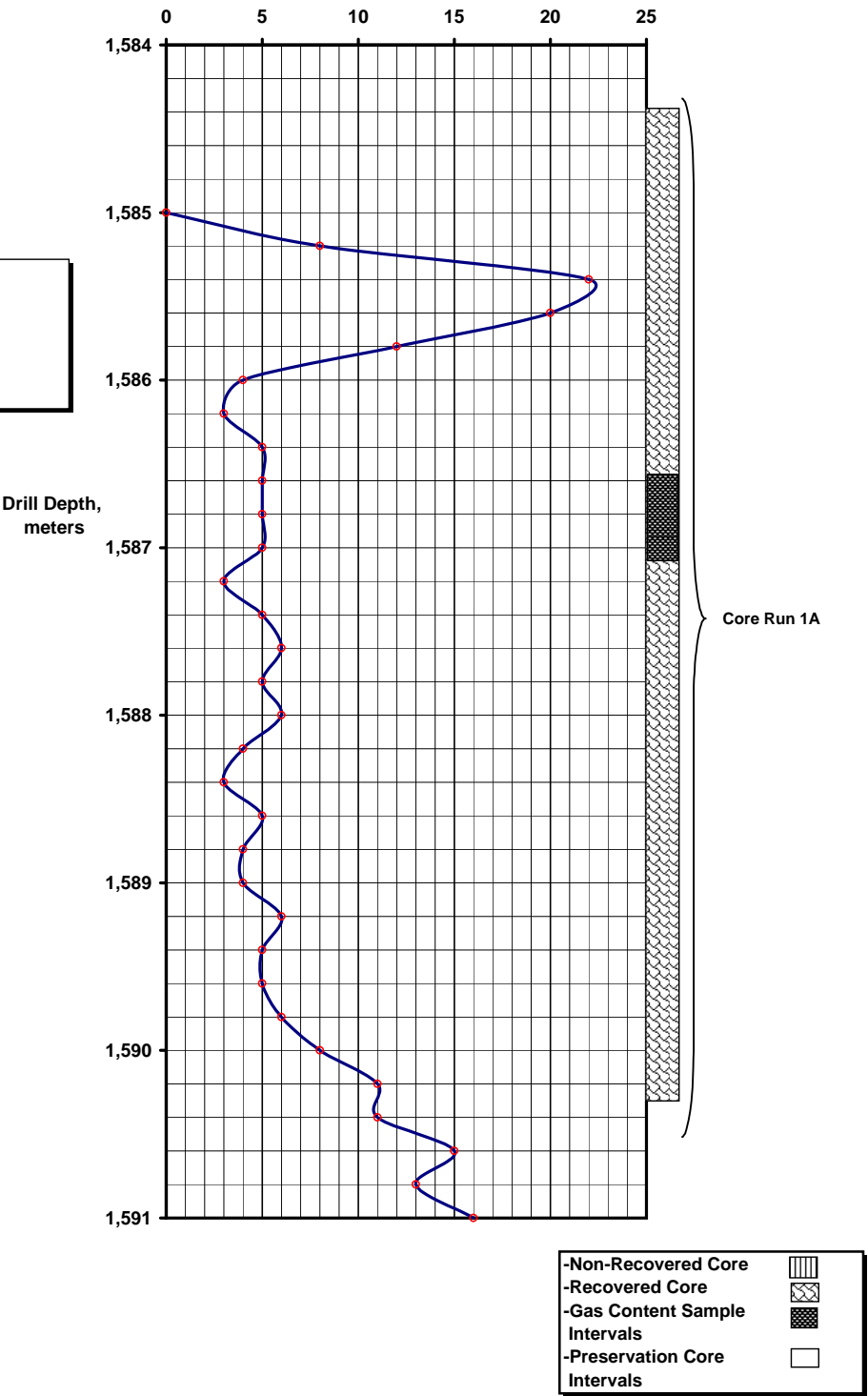
10.55 m recovered.

WFT Labs Personnel: Nathan Parker and Phil Rose

Falcon Oil and Gas Australia
Shenandoah #1
CORE RUN: 1A
Lower Kyalla Shale
Rate of Penetration

(minutes per foot)

Core Run 1
Pump Pressure: 0 psig
Pump Rate: 0 spm
Pump Rate: 0 gpm
Weight On Bit: 0 lbs.
Pipe Rotation Rate: 0 rpm





Weatherford
LABORATORIES

CORE OPERATIONS

CORE RUN: 1B

Date: 28/8/2009

OPERATOR: Falcon Oil and Gas Australia
WELL: Shenandoah #1
FIELD / PROSPECT:
COUNTRY: Australia
REGION: Northern Territory

LAT: / LONG: Lat: 16° 37' 22.16" S / Long: 133°34' 38.22" E
SECTION: N/A
TOWNSHIP: N/A
RANGE: N/A
ELEV (M): GL: 226.8 m; KB: 232.6 m
Datum: KB

OPERATOR: Falcon Oil and Gas Australia

RIG: Australian Drilling Services Rig #6
SERVICE: Baker Hughes Inteq Coring Service
Baker Hughes Inteq Surface Logging

Core Service Company: Baker Hughes Inteq
Core Bit Type: URC - 427
Core Bit Size¹: 21.59cm / 10.16cm
8.5" / 4.0"
Core Barrel Type: 9 m
Liner Type: 9 m Solid Fiber Glass
Coring Fluid: Water-based Mud
Fluid Density (ppg): 8.4
Fluid Temp. In (°C/°F): 43.2
Fluid Temp. Out (°C/°F): 44.5
Pump Pressure (psi): 457.0
Pump Rate (gpm): 300
Weight on Bit (lbs): 8,000 - 17,000
Pipe Rotation Rate (rpm): 66
Type Core
(Oriented/Non-Oriented): Non-Oriented
Formation Name: Lower Kyalla Shale
Method for TOH: Conventional
Date/Time Start Coring: 8/28/2009 13:02:00
Date/Time End Coring: 8/28/2009 21:24:00
Date/Time Start TOH: 8/28/2009 22:00:00
Date/Time Last Stand
at Surface: 8/29/2009 05:43:00
Core Barrel Trip Out Time
(hh:mm:ss): 7:43:00
Interval Cored (m): 1,585.00 - 1,595.55
Core Length Recovered (m): 10.55
Reservoir Temp (°C):
Reservoir Temp (°F):
Surf. Temp/Press (°C/in-Hg): 22.9 / 29.26
Surf. Temp/Press (°F/in-Hg): 73.2 / 29.26

CORE RUN: 1B								
Top Depth	Bottom Depth	Start	End	Penetration Rate	Canister	Can Sealed Date/Time	Sample	
meters, KB	meters, KB	hh:mm:ss	hh:mm:ss	mm:ss	No.	date hh:mm:ss	No.	
0.2	1,591.0	1,591.2	17:32:00	17:38:00	06:00			
0.4	1,591.2	1,591.4	17:38:00	17:55:00	17:00			
0.6	1,591.4	1,591.6	18:12:00	18:23:00	11:00			
0.8	1,591.6	1,591.8	18:23:00	18:30:00	07:00			
1.0	1,591.8	1,592.0	18:30:00	18:36:00	06:00			
1.2	1,592.0	1,592.2	18:36:00	18:42:00	06:00			
1.4	1,592.2	1,592.4	18:42:00	18:46:00	04:00			
1.6	1,592.4	1,592.6	18:46:00	18:49:00	03:00			
1.8	1,592.6	1,592.8	18:49:00	18:56:00	07:00			
2.0	1,592.8	1,593.0	18:56:00	18:58:00	02:00			
2.2	1,593.0	1,593.2	18:58:00	19:00:00	02:00			
2.4	1,593.2	1,593.4	19:00:00	19:02:00	02:00			
2.6	1,593.4	1,593.6	19:02:00	19:04:00	02:00			
2.8	1,593.6	1,593.8	19:04:00	19:06:00	02:00			
3.0	1,593.8	1,594.0	19:06:00	19:08:00	02:00			
3.2	1,594.0	1,594.2	19:08:00	19:10:00	02:00			
3.4	1,594.2	1,594.4	19:10:00	19:17:00	07:00			
3.6	1,594.4	1,594.6	19:17:00	19:20:00	03:00			
3.8	1,594.6	1,594.8	19:20:00	19:22:00	02:00			
4.0	1,594.8	1,595.0	19:22:00	19:26:00	04:00			
4.2	1,595.0	1,595.2	19:26:00	20:00:00	34:00			
4.3	1,595.2	1,595.3	20:00:00	20:40:00	40:00			
4.4	1,595.3	1,595.4	20:40:00	20:56:00	16:00			
4.6	1,595.4	1,595.6	20:56:00	21:24:00	28:00			
4.8								
4.9								
5.1								
5.3								
5.5								
5.7								

¹ Exterior and Interior Diameter (centimeters / inches)

NOTES: Connection made from 19:26 - 19:54

WFT Labs Personnel: Nathan Parker and Phil Rose

Falcon Oil and Gas Australia
Shenandoah #1
CORE RUN: 1B
Lower Kyalla Shale
Rate of Penetration

