

WUHUA MINING CORPORATION PTY LTD

EXPLORATION LICENCES 29202

NAPPERBY URANIUM PROJECT

RELINQUISHMENT REPORT

4 July 2015 – 16 August 2016

Titleholder/Operator: Wuhua Mining Corporation Pty Ltd
Author: Xiande Meng
Commodity: Uranium
Report Date: August 2016
Datum/Zone: GDA94/Zone 53
250,000 Mapsheet: Napperby
Contact: phvermont@gmail.com

This document and its content are the copyright of Wuhua Mining Corporation Pty Ltd. The document has been written by Wuhua Mining Corporation Pty Ltd for submission to the Northern Territory Department of Mines and Energy as part of the tenement reporting requirements as the Regulations of the Mining Act. Any information included in the report that originates from historical reports or other sources is listed in the "References" section at the end of the document. I authorize the department to copy and distribute the report and associated data.

You may display, print and reproduce this material in unaltered form only (retaining this notice) for your personal, non-commercial use or use within your organisation. Apart from any use as permitted under the Copyright Act 1968 and as stated above, no part may be reproduced by any process without prior written permission from Wuhua Mining Corporation Pty Ltd. Requests and inquiries concerning reproduction and rights should be addressed to Wuhua Mining Corporation Pty Ltd or emailed to phvermont@gmail.com

CONTENTS

FIGURES.....	3
SUMMARY.....	5
1. INTRODUCTION.....	6
1.1 Background and Tenure.....	6
1.2 Location, Access and Logistics.....	7
1.3 Climate and Vegetation.....	8
1.4 Topography and Drainage.....	9
1.5 Work Done in Year 2 (2014– 2015).....	10
2. PREVIOUS EXPLORATION	12
2.1 Uranium Exploration.....	12
2.2 Other Commodities.....	14
2.3 Summary of Exploration Results.....	16
3. GEOLOGY.....	18
3.1 Regional Geology.....	18
3.2 Local (EL 29202) Geology.....	19
4. URANIUM MINERALISATION.....	21
4.1 Source Rocks of Uranium	21
4.2 Potential Types of Uranium Mineralisation.....	21
5. INTERPRETATION AND URANIUM PROSPECTIVITY	24
5.1 Methodology	24
<i>Topography – Digital Elevation Model (DEM)</i>	24
<i>Landsat TM</i>	25
<i>Radiometric</i>	26
<i>Total Magnetic Intensity (TMI)</i>	30
<i>Gravity</i>	31
5.2 ASTER Night-Time Thermal Infra-Red Data Interpretation.....	32

5.2.1	Introduction.....	32
5.2.2	Data and Results.....	33
5.2.3	Interpretation.....	33
5.3	Surface Geochemistry	39
5.4	Uranium Prospectivity.....	48
6.	CONCLUSIONS AND RECOMMENDATIONS.....	49
7.	EXPENDITURE COVENANTS.....	51
7.1	Expenditure Report for Year 1 (2015 – 2016).....	45
	KEY REFERENCES.....	52
	APPENDIX 1.....	53
	APPENDIX 2.....	57

FIGURES AND TABLES

- Figure 1.1 Regional Location Map showing “Wuhua” Napperby uranium project ELs. EL 29202 is located in the northwestern corner of the map.
- Figure 1.2 Landsat ETM7 realistic_123 over DTM imagery showing relationships of landscapes, roads, locality and EL 29202.
- Figure 1.3 NAPPERBY 1:250,000 geological mapsheet showing relationships of Reynolds Range, Ngalia Basin and “Wuhua” uranium project ELs. EL 29202 is located in the northwestern corner of the map.
- Figure 1.4 Photo imagery of EL 29202 showing regolith cover and acacia trees and bush / grass undergrowth.
- Figure 2.1 Historical exploration licences in and nearby the EL 29202.
- Figure 2.2 Summary of historical sampling and collar locations in the Wuhua Mining Corporation Pty Ltd tenement area.
- Figure 2.3 Summary of historical sampling and collar locations over EL 29202.
- Figure 3.1 Regional Fact Geology Map (Regional solid geology showing tenements in relation to the Ngalia Basin (P10, O, D and C). Arunta Block comprises units A5 and A6 comprising deformed and metamorphosed supracrustal sequences and a variety of granitoid gneiss and intrusive granites (g5, g6, g7, g8). Also shown are sites of significant U-mineralisation [Napperby (New Well), Walbiri and Bigrlyi].
- Figure 3.2 Tenement EL 29202 surface geology and U^2/Th radiometrics.
- Figure 4.1 Uranium potential in the Ngalia Basin and Amadeus Basin
- Figure 4.2 Uranium occurrences in and adjacent to the Ngalia Basin [uranium occurrences shown in blue. Yellow: most recent exploration activity. Advanced or significant underdeveloped occurrences shown with pickaxe. (Northern Territory Government Report, March 2013)].
- Figure 5.1 Digital Elevation Model (DEM) over surface geology.
- Figure 5.2 Landsat TM imagery over DEM.
- Figure 5.3-1 U radiometrics, U^2/Th Ratio and uranium occurrences in relation to ‘Wuhua’ tenements.
- Figure 5.3-2 KThU radiometrics imagery and mineral occurrences in relation to tenement.
- Figure 5.3-3 Radiometrics TC imagery and mineral occurrences in relation to tenement.

- Figure 5.3-4 U radiometrics imagery and mineral occurrences in relation to tenement.
- Figure 5.3-5 Th Radiometrics imagery and mineral occurrences in relation to tenement.
- Figure 5.4-1 Total Magnetic Intensity (TMI) of the ‘Wuhua’ project area.
- Figure 5.4-2 Total Magnetic Intensity (TMI) of EL 29202 showing Ngalia Basin and mineral occurrences.
- Figure 5.5 Gravity of the ‘Wuhua’ project area showing Ngalia Basin and mineral occurrences.
- Figure 5.6 ASTER NTIR (TIR432) coverage over the Napperby project area.
- Figure 5.7 ASTER NTIR (TIR531) coverage over the DEM and Napperby project area.
- Figure 5.8 ASTER NTIR coverage over the EL 29202.
- Figure 5.9 ASTER NTIR coverage over the DEM and EL 29202.
- Figure 5.10 ASTER NTIR coverage over the U radiometrics and EL 29202.
- Figure 5.11 Interpreted channels draped over the DEM and ASTER NTIR images, and EL 29202, showing cool zones (yellow).
- Figure 5.12 Figure 5.12 The sample locations within EL 29202 (yellow). Traverse 1 – CS are sampled in 50 m interval from the west (CS 01; Lat: 22°04’15’’; Long: 132°11’07’’) to the east (CS 10; Lat: 22°04’16.4’’; Long: 132°11’25.4’’). Traverse 2 – CS(01) are sampled in 50 m interval from the northeast [CS(01) 01; Lat: 21°58’15.9’’; Long: 132°15’22.4’’) to the southwest (CS(01) 10; Lat: 21°58’33.6’’; Long: 132°15’18.3’’].
- Figure 5.13 The sample location plan within EL 29202 (pink). Traverse 1 – CS are sampled from the west (CS 01) to the east (CS 10). Traverse 2 – CS(01) are sampled from the northeast [CS(01) 01] to the southwest (CS(01) 10).
- Table 1.1 Wuhua Mining Corporation Pty Ltd Tenement EL 29202 Schedule.
- Table 2.1 Summary of Historical Tenements in the EL 29202 Area.
- Table 5.1 Summary of samples collected from EL 29202.
- Table 5.2 Geochemical analysis results of EL 29202
- Table 5.3 Best results from two sampling traverses.

SUMMARY

Pacific Exploration Pty Ltd (“Pacific”) acquired a uranium tenement (EL 29202) in southwestern Northern Territory for exploring uranium resources. The transfer (D93491) to Wuhua Mining Corporation Pty Ltd (“Wuhua”) (100%) from Pacific Exploration Pty Ltd has been approved in June 2013. The historical exploration tenements in this area were granted to explore for not only uranium but gold, base metals, tungsten and diamonds. Significant historical anomalies are the Corrigan tin and tungsten anomaly (ANZECO, EL 1316) and the Napperby Creek U prospect (PNC Exploration, EL 8411). Historically, EL 29202 has had some sampling and drilling undertaken, mainly during the 1970s.

The regional geology comprises the polymetamorphic Palaeoproterozoic Arunta Block and the Neoproterozoic to Carboniferous Ngalia Basin. EL 29202 is located within the foothills of the Reynolds Range, north of a uranium field - Ngalia Basin. This area has the potential to host not only surficial and/or sandstone style uranium mineralisation probably accumulated in palaeovalleys, but also metasomatite/ vein style uranium mineralisation developed in the granitic rocks.

Historical uranium exploration activity in the southwestern area identified uranium anomalies in stream sediment samples, indicating significant uranium potentials of the licences. These uranium potentials are probably hosted in the palaeovalleys drained the U-sourced Reynolds Range and discharged into Ngalia Basin. Tenement EL 29202 comprises rocks of the Lander Rock beds and Wangala Granite. The Wangala Granite has an elevated U^2/Th radiometric response and elsewhere vein-style uranium mineralisation and Sn-W-Ta pegmatites have been reported. The Lander Rock beds are known to host metasomatite type fluor-apatite mineralisation as found at Nolans Bore.

Exploration during the reporting period comprises field trip to locate and sample geochemistry and interpretation and the desktop study for the uranium exploration. An interpreted overview and technical proposal of the geological, geophysical and tectonic setting for exploration of the Napperby (Reynolds Range and Ngalia Basin, Northern Territory) uranium has been reported. This geoscientific study aims to investigate the geochemical (with geophysical and geological) expression of structures related uranium mineralisation and its relationship with possible palaeodrainage landforms by interpreting available remote sensing and geophysical data. These studies will assist exploration in the Napperby area (particularly Reynolds Range and Ngalia Basin) and provide fundamental data for increasing knowledge of geological processes and landscape evolution within this region.

Delineation of these subsurface signatures is proposed for further investigation by applying effective methods, such as airborne electromagnetic survey and RC drilling.

1. INTRODUCTION

1.1 Background and Tenure

PACIFIC EXPLORATION PTY LTD (“Pacific”) acquired three uranium tenements in southwestern Northern Territory (EL 29202, EL 29205, and EL 29221) and is developing the Napperby Uranium Exploration Project. The transfer (D93491) to Wuhua Mining Corporation Pty Ltd (“Wuhua”) (100%) from Pacific Exploration Pty Ltd has been approved in June 2013. The schedule of rent and expenditure for the tenement EL 29202 is summarised in Table 1.1. This tenement is located in the Reynolds Range - Ngalia Basin region (see Figures 1.1 and 1.3).

Table 1.1 Wuhua Mining Corporation Pty Ltd Tenement EL 29202 Schedule.

Tenement ID	Tenement ID	Expires	Area km ²	1 st Year Rent	1 st Year Expenditure	2 nd Year Expenditure
EL 29202	4/07/2012	3/07/2018	339.9	\$3,520	\$26,500	\$37,500

The Ngalia Basin contains many uranium occurrences, but the onshore basin in comparison to other geological provinces in the Northern Territory largely remains under explored. The previous investigation shows that the radiometric anomalies and particularly their relationship with potential palaeovalleys present within the Project areas still remain uninvestigated. The radiometric anomalies are associated with the favourable lithologies which have the potential to hosted uranium deposits found in this area of Northern Territory, namely the rocks of the Lander Rock beds, Wangala Granite, Napperby Gneiss and sedimentary sequences of Ngalia Basin and associated palaeovalleys.

In terms of both regional and project scales structure and palaeolandform the Project areas are ideally situated for sandstone and surfacial, as well as vein/ metasomatite style uranium deposits. The uranium potentials in the Napperby project areas could form in a number of ways:

1) Vein/ metasomatite style uranium deposits formed from re-mobilisation of uranium (a highly mobile element) from older sources such as the Lander Rock beds, Wangala Granite, Napperby Gneiss.

2) If any structures occur (possibly given the basement rocks), then reactivation of these structures over a long period of time could result in forming the vein/ metasomatite style uranium mineralisation.

3) If any palaeodrainage systems occur (possibly limited given the young age of the basin), then reactivation of these palaeorivers over a long period of time could result in the re-deposition of the basement derived uranium into the palaeovalleys/lakes, forming sandstone and/or surfacial uranium deposits. Suitable aquifers may be present, allowing for the long term movement of possible uranium bearing groundwater to depositional sites.

Recommendations for the comprehensive prospectivity and exploration techniques (e.g., night-time thermal imagery of ASTER and Airborne Electromagnetic) have been provided. The interpretation of the magnetic, radiometric and morphology, based on the current data, thus formed a basis for uranium exploration in the project area, and further

investigation into the geomorphology, sedimentology and landscape evolution of the project area and associated uranium mineralization is necessary.

1.2 Location, Access and Logistics

EL 29202 is located approximately 280 kilometres northwest of Alice Springs and 1100 kilometres south of Darwin by the Stuart Highway in the southern part of the Northern Territory of Australia (Figure 1.1). Locally, EL 29202 is located approximately 30km northeast from YUENDUMU; extending from the vicinity of Mount Denison homestead in the northwest to Napperby homestead in the southeast (Figure 1.2). The licence occurs in the Reynolds Range - Ngalia Basin region, within the foothills of the Reynolds Range (Figure 1.3). The geology is illustrated by the NAPPERBY 1:250,000 geological mapsheet. Access within the three tenement areas is convenient to station tracks extending from a number places (Figures 1.1 and 1.3).

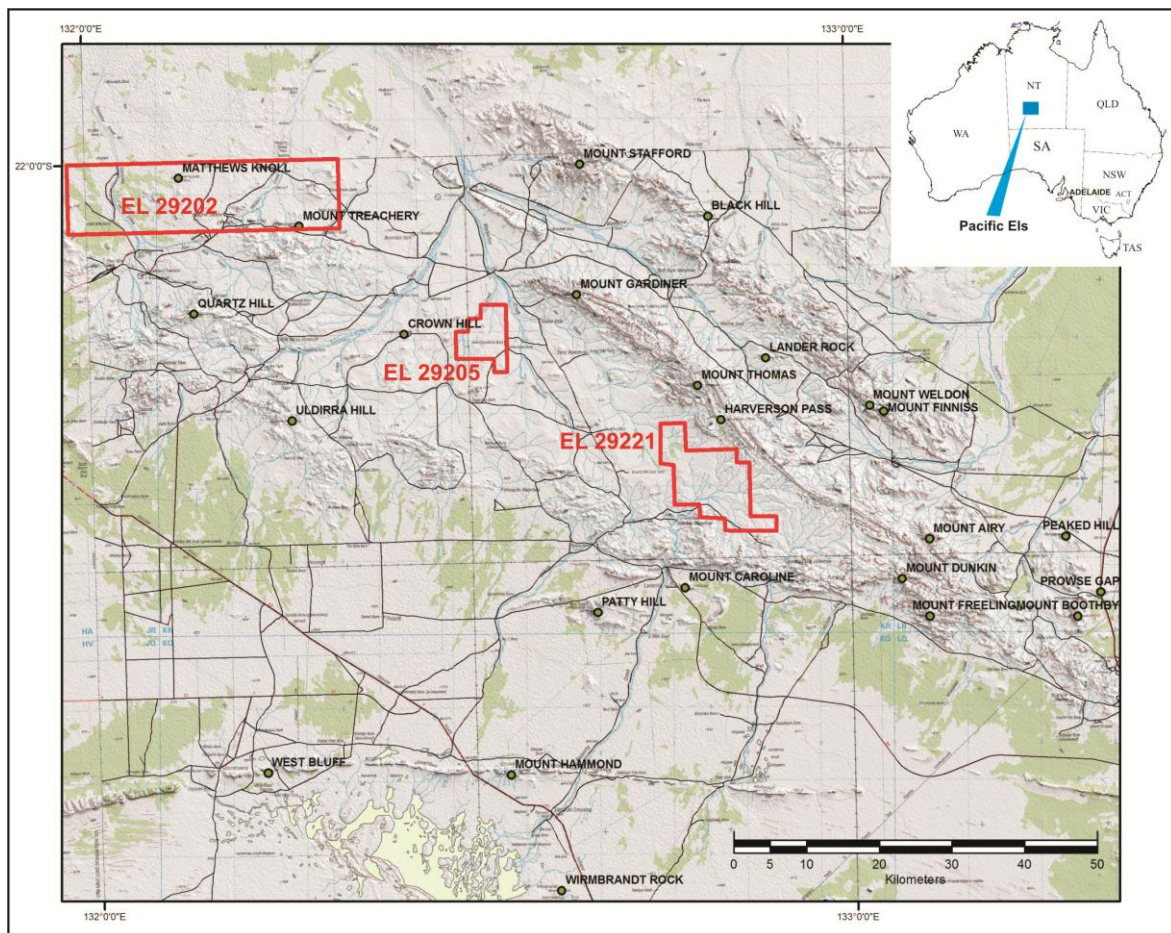


Figure 1.1 Regional Location Map showing “Wuhua” Napperby uranium project ELs. EL 29202 is located in the northwestern corner of the map.

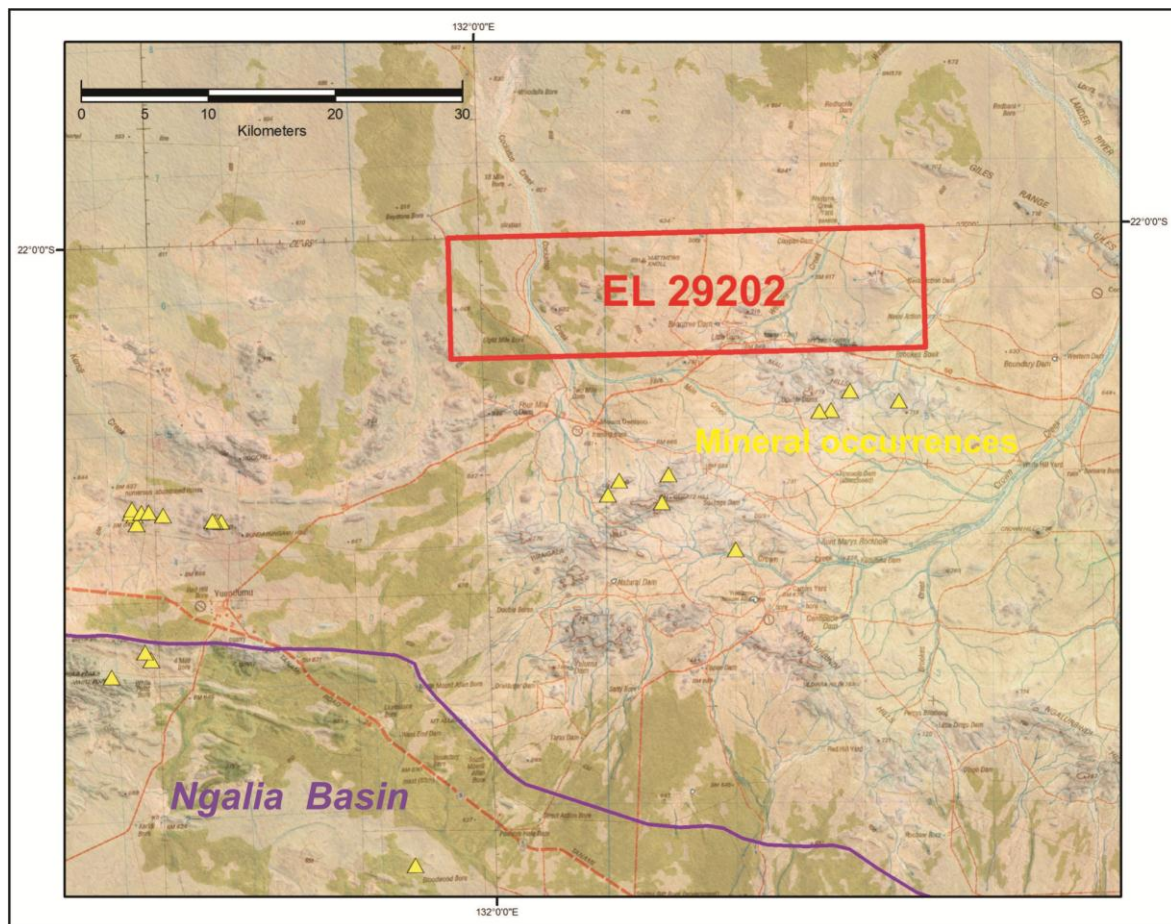


Figure 1.2 Landsat ETM7 realistic_123 over DTM imagery showing relationships of landscapes, roads, locality and EL 29202.

Alice Springs (pop. 27,000) is well serviced by road transport and interstate bus services, because of its location mid-way between Adelaide and Darwin. The Stuart Highway and Adelaide-Darwin transcontinental railway corridor, passing through Alice Springs, bisect the area. Alice Springs is also serviced daily by jet aircraft from several Australian capital cities (Sydney, Adelaide, Perth and Darwin) and less regularly from Brisbane, Cairns and Broome. Alice Springs is the closest services centre, 280km by road via the Stuart Highway.

1.3 Climate and Vegetation

The region has a semi-arid continental climate, characterised by long hot summers when temperatures regularly exceed 35°C, and short mild winters. The average rainfall is about 280mm, most of which falls between October and March, but both frequency and amount are erratic. There are typically around 30 rainy days per year. The average annual evaporation (as measured at the nearest station in Alice Springs) is 2.9 m. The normal exploration field season runs from April to October.

The majority of the tenement is covered by various thicknesses of regolith cover and acacia trees and bush / grass undergrowth (Figure 1.4). The vegetation ranges from savanna woodland near the creeks, to gidgee and acacia scrub to annual grasslands. The vegetation is consistent with a semi-arid regime. Sand plains are covered by thick grasses, particularly spinifex (*Triodia*), and sparse low shrubs and trees such as mallee, bloodwood,

desert currajong, and witcherty bush. Vegetation throughout most of the area consists of tall mulga open shrubland with a woollybutt open grassland understorey.

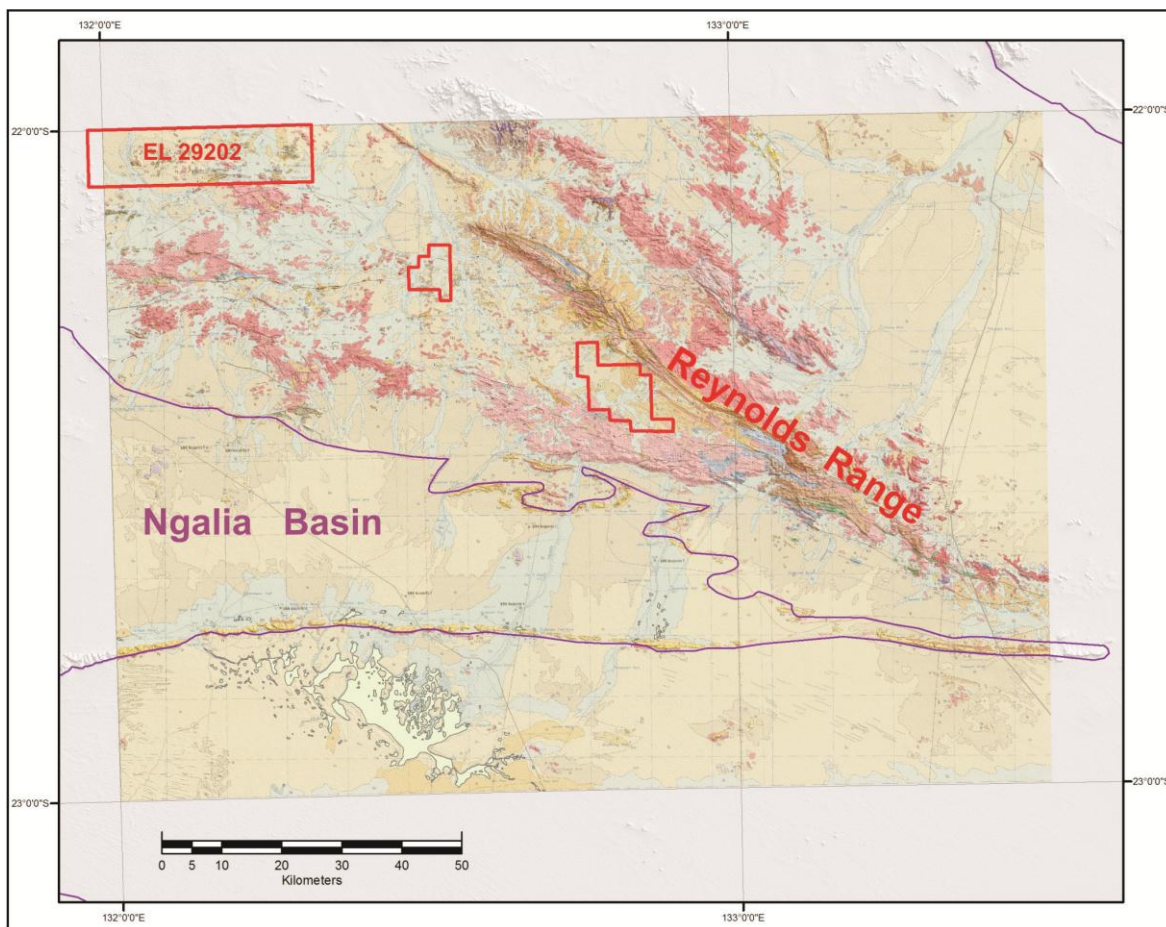


Figure 1.3 NAPPERBY 1:250,000 geological mapsheet showing relationships of Reynolds Range, Ngalia Basin and “Wuhua” uranium project ELs. EL 29202 is located in the northwestern corner of the map.

1.4 Topography and Drainage

The Napperby area is characterised by sandy and alluvial plains with an average height of about 500 metres above sea level, which pass into hilly country and low ranges with a maximum relief rarely exceeding more than 200 m above the surrounding plain. The area of the EL 29202 comprises a flat sandy plain rising gently southeastwards from around 500m ASL to around 760m ASL in the southeastern part of the EL 29202 (Figure 1.3). Creeks that rise in the highlands and ranges discharge towards the low land in the EL 29202 area.



Figure 1.4 Photo imagery of EL 29202 showing regolith cover and acacia trees and bush / grass undergrowth.

1.5 Work Done in Years 1 (2013 – 2014) and 2 (2014 – 2015)

Field Work (2014)

A field reconnaissance was undertaken to assess the local geology in the second year of tenure. Most of the tenement areas are covered by Cainozoic sediments, predominantly uncemented aeolian sand plains and dunes; with some outcropping bedrocks (Figure 1.4). The base of the valley (creek) floor is largely covered by transported, predominantly colluvial-alluvial material. This cover is probably quite thick in places, but areas were identified where lag sampling was feasible to test for mineralisation in both the valley fill and basement.

Field and Geochemical Works (2015)

A field reconnaissance was undertaken to take soil samples for geochemical analysis in the third year of tenure. The samples were sent to Bureau Veritas Minerals Pty Ltd for geochemical analysis; and the discussion and interpretation are in Chapter 5.3.

ASTER Night-time Data Processing and Interpretation

Night-time Thermal Infra-Red (NTIR) data from the ASTER satellites have been acquired over “Wuhua” Napperby Uranium Project area (ELs: 29202, 29205, and 29221) in April 2014 (see Appendix 1). These data have been processed and interpreted with herein. Overall the NTIR technology can provide useful information, particularly when used with other informative data such as Landsat TM, geological map and non-marine sedimentology, for palaeovalley-related mineralization in sedimentary host rocks which have no surface expression.

Desktop Surveys

A desktop study compiled by Wuhua Mining Corporation Pty Ltd aims to interpret geochemical data together with ASTER night-time thermal data, geological and geophysical information, to investigate uranium potentials. Office work in the third year of tenure consisted of field and desktop surveys covering the various topics outlined in this technical report. Primarily ‘Wuhua’ consisted in examining historical exploration in the area and cross-referencing this where possible with the current thinking on mineral deposition in the area to generate valid exploration targets for follow up in the third year of tenure. These include the review and interpretation of available geochemical, remote sensing, geophysical and geological data for the licence area, generation of prospects by examination of these. During the first and second years a broad scale literature survey was conducted on the whole of the Napperby Project area (three ELs).

Exploration Targeting

Exploration models target uranium-rich granitic, metamorphic and sedimentary rocks on depositional basin margins where palaeovalleys probably developed. Uranium hosted in Cainozoic palaeovalleys is high potential of exploration. The investigation of the major structural corridor through the licence area will be other priority, elsewhere this corridor may host vein-style uranium deposits and so will be studied in depth for these deposits here.

Recommendations for the comprehensive prospectivity and exploration techniques have been provided. The interpretation of the geochemistry, remote sensing, magnetic, gravity and morphology, based on the current data, thus formed a basis for mineral exploration in the Napperby exploration project area, and further investigation into the geomorphology, geology geochemistry and geophysics of the project area and associated mineralization is necessary.

2. PREVIOUS EXPLORATION

A review of the historical exploration conducted over EL 29202 was completed by identifying the historical tenement that overlapped with the current tenement (Table 2.1; Figure 2.1).

Table 2.1 Summary of Historical Tenements in the EL 29202 Area.

Historical Tenement	Company	Granted	Ceased	Area km ²	Overlaps	Commodity
AP 3169	Tanganyika Holdings	30/03/1971	29/09/1972	604.10	EL 29202	Uranium
EL 749	Tanganyika Holdings	7/11/1972	6/11/1973	604.10	EL 29202	Uranium
EL 1316	Yuendumu Mining &	19/04/1978	19/04/1980	1206.73	EL 29202	Uranium
EL 2500	CRA Exploration	6/03/1981	5/03/1980	540.85	EL 29202	Base metals
EL 2602	Jays Exploration	27/03/1982	26/03/1983	286.31	EL 29202	Tin and tantalite
EL 5986	Stockdale Prospecting	1/07/1988	28/06/1989	1240.99	EL 29202	Diamonds
EL 8420	PosGold	1/11/1994	21/08/1998	1140.34	EL 29202	Gold
EL 23923	Tanami Exploration	1/06/2004	4/07/2011	1177.11	EL 29202	Uranium

2.1 Uranium Exploration

AP 3169 (30 March 1971 to 29 September 1972 - Tanganyika Holdings Pty Ltd):

AP 3169 was granted to Tanganyika on 30 March 1971. It is the precursor to EL 749 and covers an identical area. Work conducted at this stage included a photogeological interpretation and an aeromagnetic survey interpretation of the BMR 1960 survey. See EL 749 for further information.

EL 749 (7 November 1972 to 6 November 1973 - Tanganyika Holdings Pty Ltd):

EL 749 was granted to Tanganyika Holdings on the 7 November 1972 to explore for surficial-style uranium. The tenement covered 604km² and overlaps a significant portion of EL 29202. Exploration by Tanganyika included a photogeological interpretation, interpretation of the BMR 1958 magnetic and radiometric airborne survey, ground traverse scintillometer readings both in car and on foot and stream sediment sampling. Tanganyika was not able to get an accurately located map of the airborne survey and had very little success at locating anomalies on the ground. Ground traverses identified high radiometric readings in shear zones interpreted as secondary enrichment.

Tanganyika noted a small gossanous quartz reef outcropping in the Denison area, assaying 200ppm Cu and 0.1dwt/ton (1dwt/ton = 1.530g/t) Au with low As and Zn values (the exact location was not confirmed).

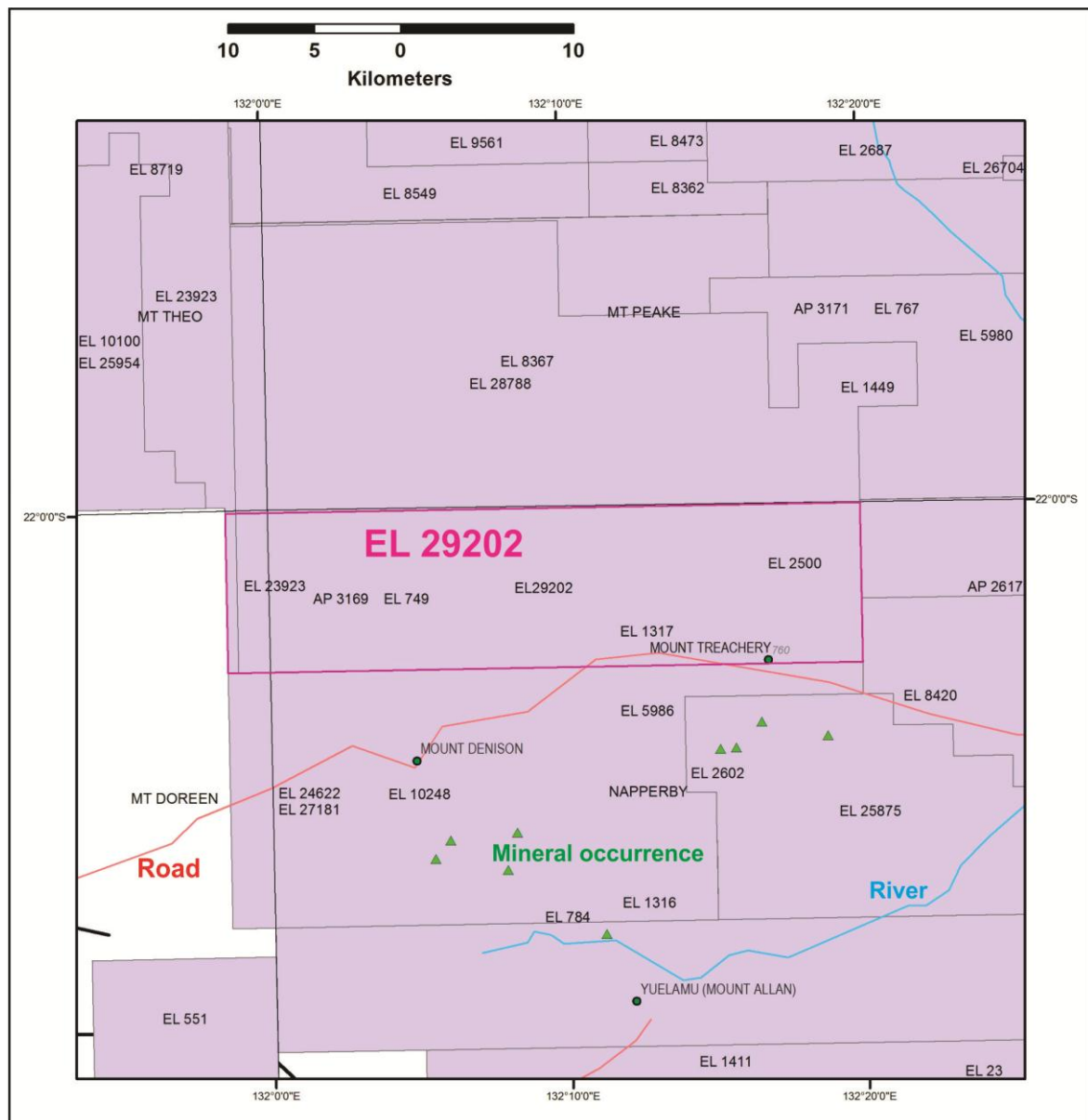


Figure 2.1 Historical exploration licences in and nearby the EL 29202.

During 1973 Tanganyika entered into a joint venture agreement with Quest Mining and Exploration NL. Exploration during this time included analysing bore water samples for uranium, radon and vanadium, phosphorus and sulphate ions and collecting granite and calcrete rock samples for analysis of uranium only and uranium, vanadium and phosphorus respectively. Particular attention was paid to mapping the calcrete deposits and detailed spectrometer work was conducted on some. The tenement was considered prospective for secondary uranium deposits but not base or precious metals.

EL 1316 (20 April 1977 to 19 April 1980 - Yuendumu Mining Company NL and Central Pacific Minerals NL):

EL 1316 was granted to Yuendumu Mining Company NL and Central Pacific Minerals NL on 20 April 1977 to explore for uranium and base metals. The tenement

covers 1,273km² and completely overlaps EL 29202. In the NT GIS tenement database this tenement has been incorrectly labelled as EL 1317.

Yuendumu and Central Pacific concluded from a review of the 1976 BMR airborne radiometric and magnetic survey of the Napperby sheet that there was no significant surface uranium mineralisation within the tenement. However, they also conducted a car-borne radiometric survey over all of the station tracks within the tenement, totalling 238.4 line-kilometres. Readings were taken every 100m from a floor-mounted Scintrex BGS-IS scintillometer travelling at approximately 20km/h. No uranium mineralisation was identified. Exploration then focussed on the B.I.G. tin and tungsten Prospect in the far south east of EL 1316.

In mid-1978, Yuendumu and Central Pacific entered into an agreement with Australia and New Zealand Exploration Company (ANZECO) to allow them to explore for tungsten and uranium. A heavy mineral sampling program was conducted aimed at identifying tungsten mineralisation, 59 samples were taken from within EL 29202. The highest assay values within the current tenement were 85,000ppm Sn (8.5% Sn) and 7800ppm W, related to the Corrigan anomaly. Nine other stream sediment samples assayed >1% Sn. ANZECO identified many anomalies but follow-up observations under ultra-violet light failed to identify large concentrations of scheelite. The Corrigan Anomaly is within EL 22202 on the southern boundary 4km south east of Bean Tree Dam.

ANZECO concluded that while the rocks generally contained anomalous amounts of uranium, there was little evidence of alteration and concentrating mechanisms required to mobilise, transport and fix uranium in economic grades and quantities. Similarly, despite high background tungsten values, no prospective areas of economic mineralisation were identified.

2.2 Other Commodities

EL 2500 (6 March 1981 to 5 March 1982 - CRA Exploration):

EL 2500 was granted to CRA on 6 March 1981 to explore for base metals. The tenement covered 540km² and overlaps with the eastern half of EL 29202. CRA completed a reconnaissance geochemical stream sediment survey of 35 samples, sieved to -90#, -60#, -40# and +40# and weighing 100g each. Twelve samples were collected within EL 29202 and the highest assay values were 10ppm Cu, 22ppm Pb, 24ppm Zn, 362ppm Sn and 92ppm W. CRA identified moderately anomalous tin, tantalum and niobium values in stream sediments and gravel samples that were attributed to Tertiary sediment on Lower Proterozoic granite gneiss. CRA stated that anomalous gold values were due to an analytical error. The tenement was recommended for relinquishment.

EL 2602 (27 March 1982 to 26 March 1983 - Jays Exploration Pty Ltd):

Jays Exploration was granted EL 2602 on 27 March 1982 to target tin and tantalite alluvial mineralisation but pegmatites were also assessed to determine the extent and potential of the host rocks. The tenement covered 266km² and overlapped the south eastern portion of EL 29202. Exploration included; alluvial sampling and concentrating on site and collecting pegmatite rockchips.

Jays note that a small deposit of scheelite was discovered in granites in the northern portion of EL 2602 in 1955 but the mineralisation proved negligible. This could possibly coincide with EL 29202 but no location is provided. Jays concluded that further investigation of the tenement would be warranted once metal prices were more encouraging but that the lack of large pegmatite bodies suggested little likelihood of potential exploitation.

EL 5986 (1 September 1988 to 28 June 1989 - Stockdale Prospecting):

Stockdale Prospected were granted EL 5986 on 1 September 1988 to explore for diamonds. Current tenement EL 29202 covers the north east portion of EL 5986. Stockdale did not find any kimberlitic indicators and relinquished the tenement on 28 June 1989.

EL 8420 (1 November 1994 to 21 August 1998 - PosGold Ltd):

EL 8420 was granted to PosGold Ltd on 1st November 1994. The exploration target was gold mineralisation in a stratigraphic repetition of Lander Rock Beds south of previously identified mineralisation. The tenement covered 1,140km² and completely overlapped EL 29202.

Within EL 29202, exploration included; an airborne magnetic and radiometric survey, regional soil sampling (over areas interpreted as having residual soil component; 144 samples within EL 29202), reconnaissance RAB drilling (69 RAB holes for 981m) and follow up vacuum bedrock drilling (64 vacuum drillholes for 332.6m). The soil samples were sieved to -125µm and in addition, 25 lags (+1-6mm) were collected where appropriate. The samples were assayed for Cu, Pb, Zn, Ag, As, Sb using ICPMS mixed acid digest; Cr, Ni, Fe, Mn, Ca, using ICPAES mixed acid digest; and Au using AAS. None of the soil or drilling samples were assayed for uranium.

The highest soil assay values were 2ppm Au, 25ppm Cu, 45ppm Pb, 85ppm Zn and 3ppm As (The NT soil database shows close spaced duplicate sampling, one set by Exodus Minerals and the other by Normandy that have different sample numbers but of the samples checked, identical assay values). Only assay values for Ag, Cr and Sb are included in the NT GIS database.

The reconnaissance RAB drilling was planned to determine the nature and depth of the regolith. Two samples were collected from each hole; at the transition from transported to residual material and a representative bedrock sample. A similar element suite to the soil sampling was used. The drilling assay values are not part of the NT GIS database so determining the highest assay value within EL 29202 is difficult. The overall highest assay values for the RAB drilling were 20ppm Au (within EL 29202), 100ppm Cu, 65ppm Pb, 240ppm Zn (within EL 29202) and 40.5ppm. Aeromagnetics over the area suggested soil cover may be concealing metasediments.

The vacuum drilling was designed to test a 20ppb Au result intersected during the reconnaissance RAB drilling. Two samples were collected from each hole; a palaeosol and bedrock sample. The samples were assayed for an element suite similar to the soil sampling. The multielement values were generally low with the exception of molybdenum (4-10ppm) which was thought to reflect the proximity of under-stopping granite.

In late 1996 PosGold was wholly merged with its parent company Normandy Mining Ltd, which subsequently changed its name to Normandy Gold Pty Ltd. On 6th August 1997, Exodus Minerals Ltd reached a joint venture agreement with Normandy to earn 60% in the “Reynolds Range” project (which EL 8420 was part of) by spending \$1.5 million by August 2001. The tenement was surrendered 21st August 1998.

EL 23923 (1 June 2004 to 31 May 2010 - Tanami Exploration):

EL 23923 was a very large tenement covering 1,177km². It overlapped all three tenements of interest and was granted to Tanami Exploration NL (a wholly owned subsidiary of Tanami Gold NL) on 1 June 2004 to target palaeochannel hosted uranium mineralisation. Exploration related to the current tenement areas comprised reprocessing geophysical data and regional regolith mapping. Results from the geophysical survey were used to determine which blocks were to be dropped. On 31 May 2007 the area coincident with EL 29202 was part of a compulsory relinquishment. The retained areas were then 100% transferred to Deep Yellow Ltd in August 2007 and correspond to the current EL 29205 and the northern portion of EL 29221.

Exploration over the relinquished blocks included; review of open file exploration data, reconnaissance field trips, Night Time Thermal Infrared (NTI) data interpretation and Airborne Electromagnetic survey. A number of palaeochannels were identified from the NTI interpretation coinciding with the current tenements of interest. No further information was available.

2.3 Summary of Exploration Results

A total of 8 historical tenements were reviewed with an emphasis on uranium exploration. Historical tenements were also granted to explore for; gold, base metals, tungsten and diamonds. Figure 2.2 shows the focus of sampling and drilling was predominantly in the Reynolds Ranges to the north and east of EL 29202 of interest. EL 29202 has had the some sampling and drilling undertaken, mainly during the 1970s (Figure 2.2).

Significant historical anomalies are the Corrigan tin and tungsten anomaly (ANZECO, EL 1316) and the Napperby Creek U prospect both just outside the current tenements (PNC Exploration, EL 8411; Figure 2.3).

Many companies identified uranium anomalies in stream sediment samples and radiometric surveys but generally the samples collected showed the source rocks had high background values and no economic mineralisation was identified.

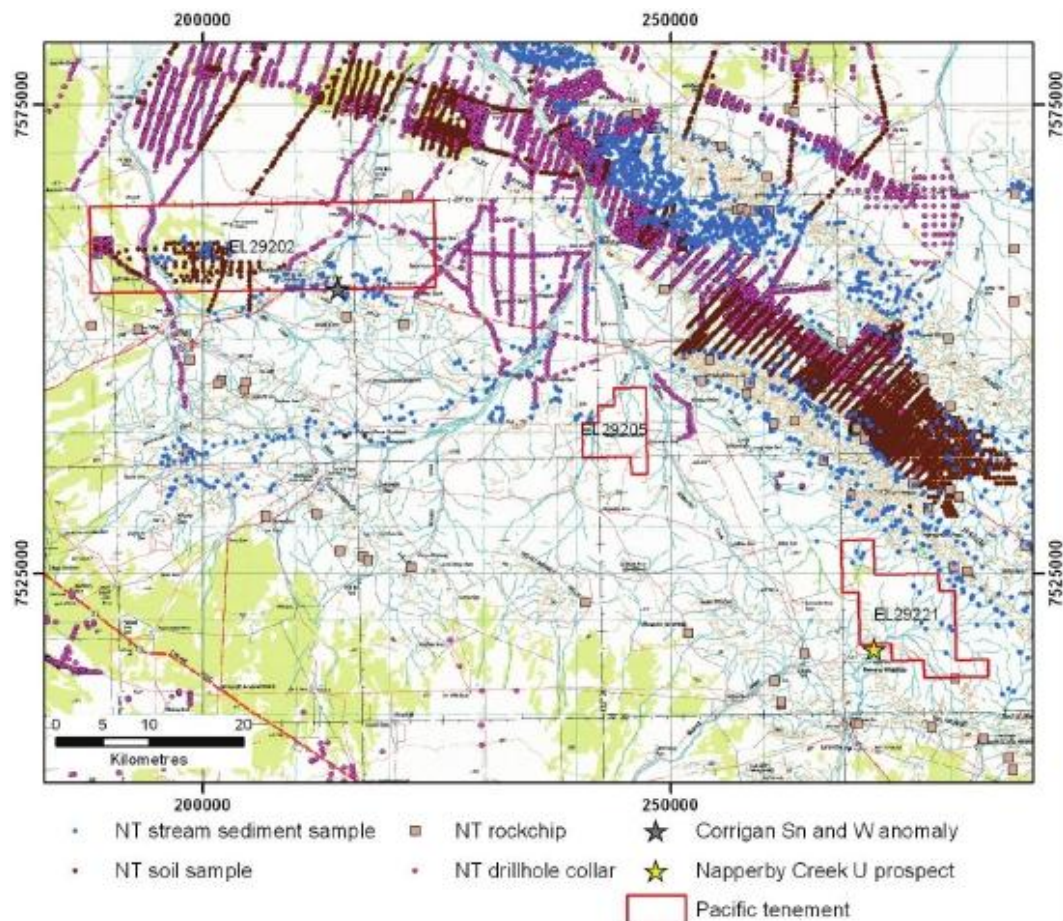


Figure 2.2 Summary of historical sampling and collar locations in the Wuhua Mining Corporation Pty Ltd tenement area.

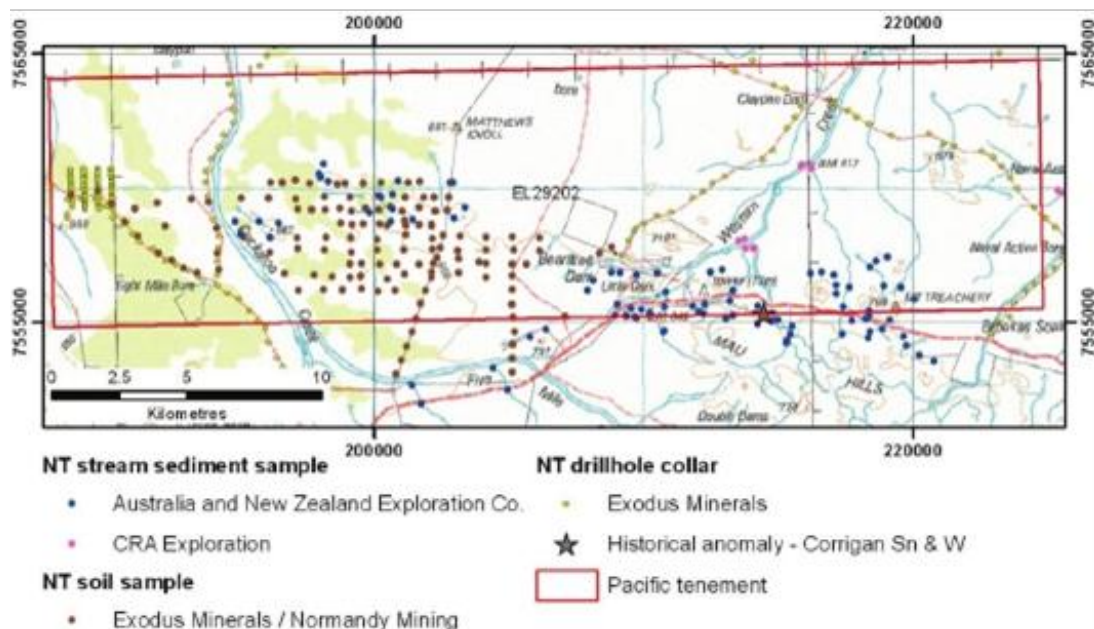


Figure 2.3 Summary of historical sampling and collar locations over EL 29202.

3. GEOLOGY

3.1 Regional Geology

The crustal architecture of the region can be broadly subdivided into the Palaeo- to Mesoproterozoic Arunta Block and the Neoproterozoic to Carboniferous Ngalia Basin (Figure 3.1). The Arunta Block represents a complex amalgamated orogenic terrane that is represented by three shear bounded tectonic provinces, The Northern, Central and Southern Provinces (Stewart et al., 1984; Shaw et al., 1984). The Southern Province is an amphibolite facies terrane comprising granitic gneiss. The Central Province is a granulite facies terrane dominated by felsic granulite. The Northern Province comprises low grade supracrustal metasediments of amphibolite and greenschist facies. Both the Northern and Southern Province are intruded by voluminous granite whereas the Central Province is relatively granite free.

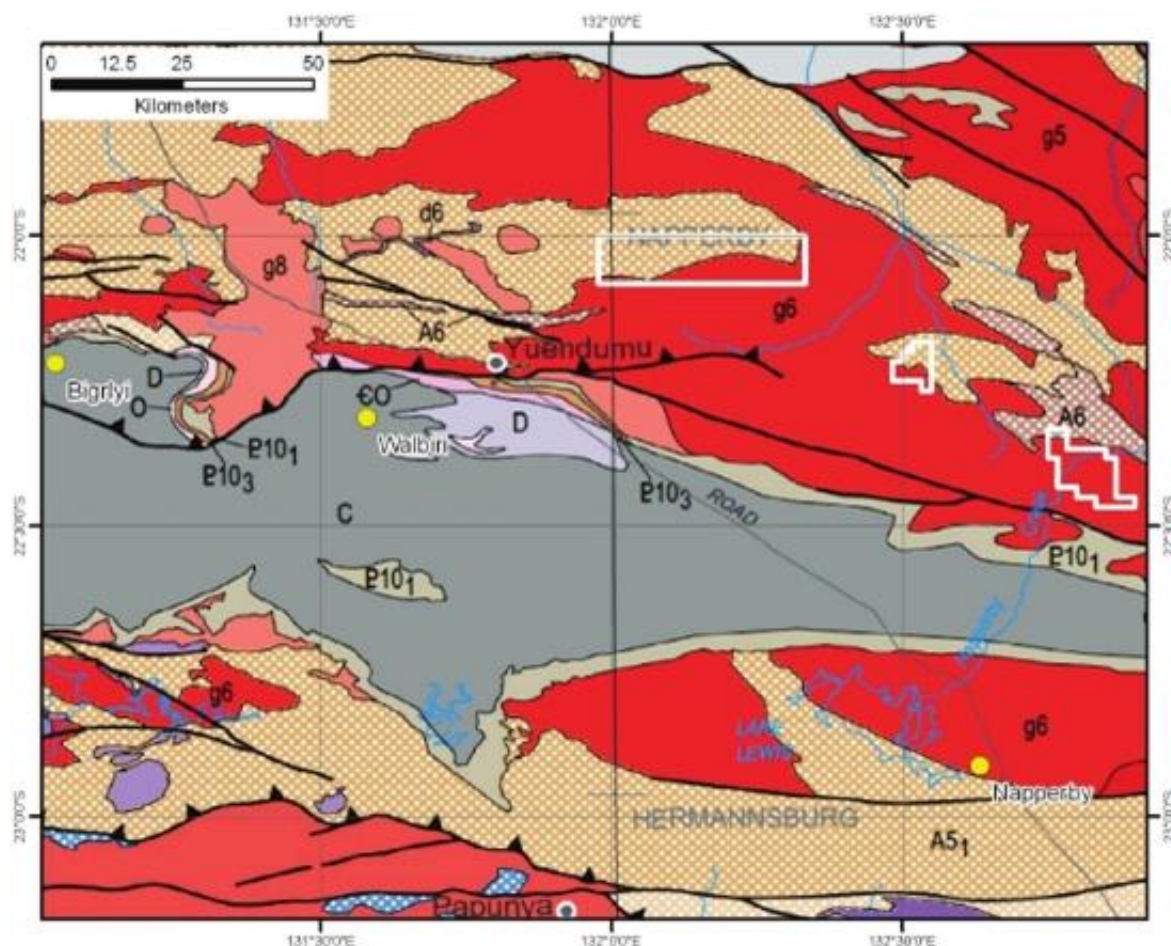


Figure 3.1 Regional Fact Geology Map (Regional solid geology showing tenements in relation to the Ngalia Basin (P10, O, D and C). Arunta Block comprises units A5 and A6 comprising deformed and metamorphosed supracrustal sequences and a variety of granitoid gneiss and intrusive granites (g5, g6, g7, g8). Also shown are sites of significant U-mineralisation [Napperby (New Well), Walbiri and Bigirlyi].

The Ngalia Basin, lying south and southwest of the tenement EL 29202 area, forms an elongate structural basin within the Palaeo- to Mesoproterozoic Arunta Block, preserving a Neoproterozoic to Carboniferous sedimentary sequence with a cumulative thickness of about 5000m (Figure 3.1). The northern margin of the basin is bounded north-dipping thrust faults whereas the southern margin is formed by a gently north dipping unconformity.

Although there are no gazetted uranium occurrences proximal to the tenement areas, the sedimentary (sandstone style) uranium fields of the Ngalia Basin are located ~50km to the southwest of the tenements whilst the sandstone and/or surficial style uranium resources may occur in the potential palaeovalleys of the project area (Figure 3.1).

3.2 Local (EL 29202) Geology

The large northwestern tenement, EL 29202 is located within the Arunta Block and comprises a diverse geology. A major arcuate shear zone separates the Wangala intrusive granite (coarse porphyritic granite and microgranite) from the northern metamorphic supracrustal lithologies. These are represented by Division Two lithologies of the Wickstead Creek Beds, Lander Rock beds and Mount Stafford beds. The Wickstead Creek beds comprise calc-silicates, marble, schist, quartzite, sillimanite gneiss and quartzofeldspathic gneiss. The Lander Rock beds comprise sillimanite biotite muscovite schist, metadolerite, andalusite hornfels, and phyllite with tourmaline pods, mica-quartz sandstone, siltstone and slate. The Mount Stafford beds comprise spotted cordierite hornfels. These are intruded in places by granite and granodiorites. The area is mostly covered by surficial deposits comprising: red earth, colluvium and aeolian sand with alluvial deposits located along the Cockatoo Creek and Western Creek drainage system.

U minerals are reported from the Wangala Granite suite, the nearest about 4km to the south occurring as veinlets and pegmatites associated with Sn-Ta-W pegmatites and similar occurrences may be present in the tenement area. The U^2/Th response of the Wangala Granite immediately south of the tenement confirms this (Figure 3.2).

Since the Lander Rock beds host the Nolans Bore fluor-apatite mineralisation, these units may be prospective for this style of mineralisation, although the mineralisation is most likely linked to structurally controlled fluid pathways rather than a particular host lithology.

The Ngalia Basin lies considerably further south and no Palaeozoic successions (Mount Eclipse Sandstone or Kennedy Sandstone Formation) that may host sandstone style uranium mineralisation, are represented in the EL 29202 tenement block.

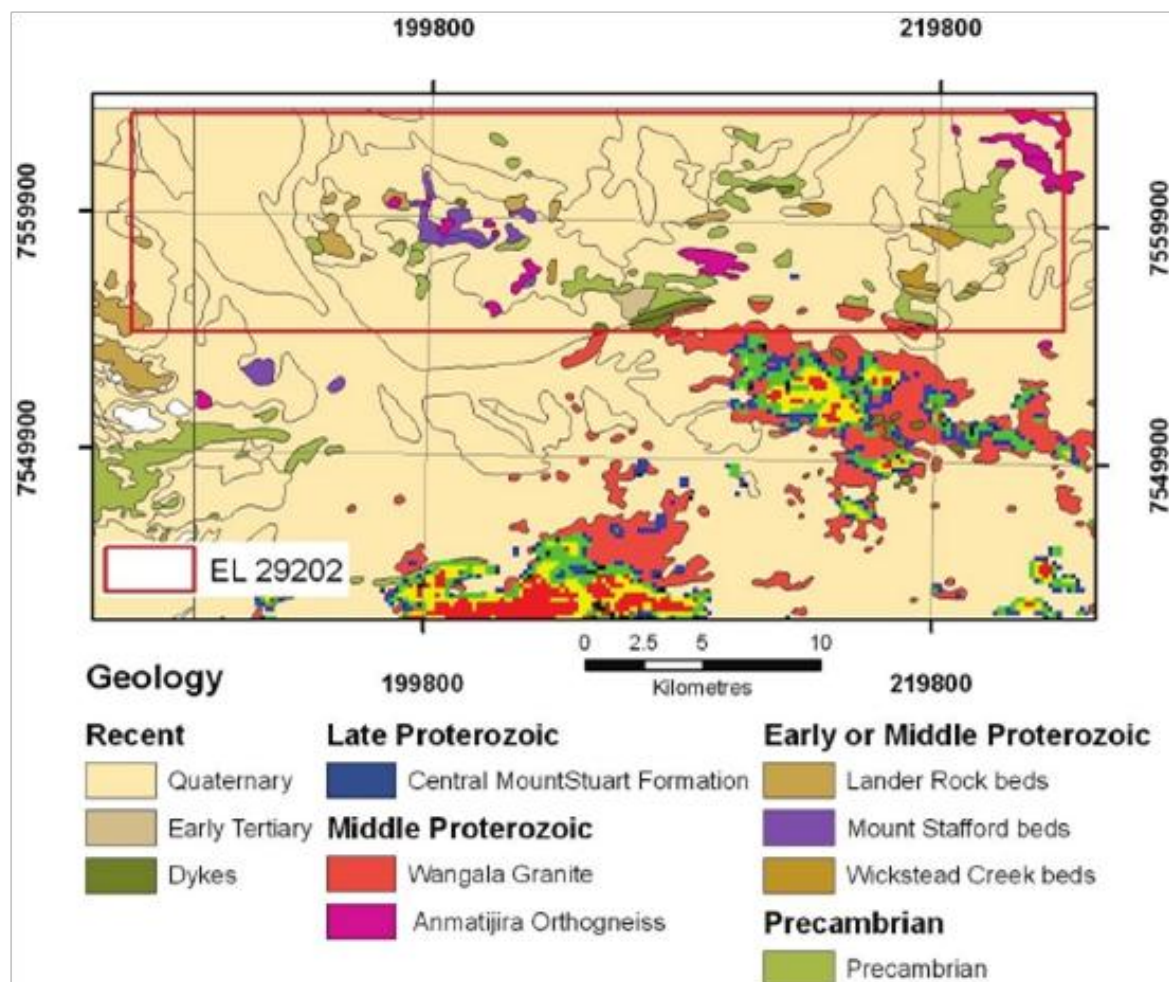


Figure 3.2 Tenement EL 29202 surface geology and U^2/Th radiometrics.

4. URANIUM MINERALISATION

4.1 Source Rocks of Uranium

The distribution of known uranium resources exhibits a clear spatial relationship with uranium-enriched bedrock in this region. The location of deposits is strongly influenced by the presence of Proterozoic age leachable uranium-rich source rocks in the headwaters of paleodrainages draining into the Ngalia Basin developed in Proterozoic Orogenic Domains (Figure 4.1). Significant uraniferous igneous rocks (containing >10 ppm uranium) formed during the Proterozoic are widespread throughout this region. The felsic granite gneiss and schist of the Arunta Block are significantly enriched in uranium. The Yulyupunya Granite Gneiss (1780 Ma) and the Southwark Granite Suite, for example, contain up to 22.5ppm uranium (Young et al. 1995).

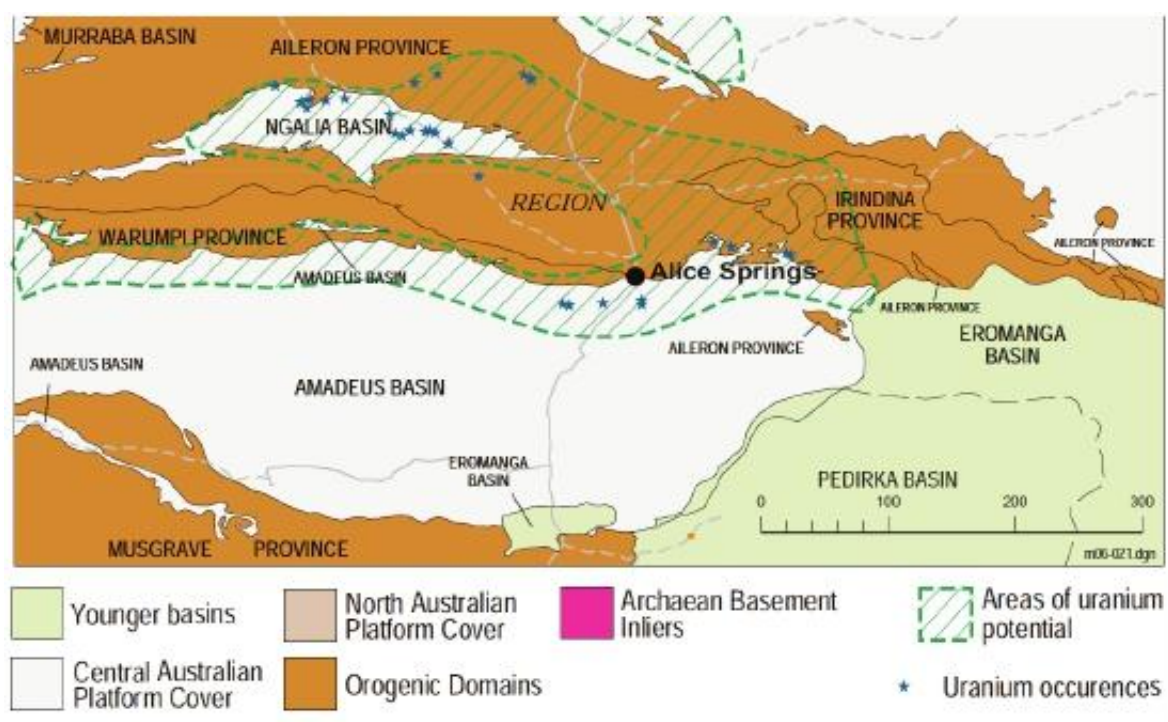


Figure 4.1 Uranium potential in the Ngalia Basin and Amadeus Basin.

4.2 Potential Types of Uranium Mineralisation

Relevance to the “Wuhua” tenement EL 29202 and surrounding area the uranium potentials are the sandstone-hosted, surficial, metasomatite and vein type mineralisation styles. These occurrences fall within the zone of regional uranium potential in the Northern Territory (Lally and Bajwah, 2006) (Figure 4.1). Of which, the sandstone and surficial types of uranium mineralisation can be deposited in paleovalley/lake and defined as any diagenetic/ epigenetic concentration of uranium minerals occurring in fluvial, alluvial,

lacustrine, and estuarine sediments. Recent discoveries of paleovalley-related uranium mineralisation (e.g., Afghan Swan deposit in Ngalia Basin of NT) highlight the potential prospectivity of the project area. In the project area examples, uranium mineralisation occurs mainly in and nearby the sedimentary (e.g., Ngalia Basin) basins flanking or overlying Proterozoic rocks known to be enriched in uranium (Figure 4.1).

The uranium fields of the **Amadeus Basin and Ngalia Basin** are associated with the project area, where the sandstone-hosted uranium mineralisation is reported from the Carboniferous Mount Eclipse Sandstone and Kerridy Sandstone Formations of the Ngalia and Amadeus Basins (Figure 4.1).

Some 20 sandstone-hosted uranium occurrences are known from within the Ngalia Basin (Figure 4.2) with significant uranium mineralisation reported at Bigrlyi (7.5Mt at 0.13% U_3O_8 , 0.12% V_2O_5) and Walbiri (0.423Mt at 0.16% U_3O_8 , and at Angela in the adjacent Amadeus Basin (10.7Mt at 0.13% U_3O_8) (Northern Territory Government Report, March 2013). Recent exploration activity in the Ngalia Basin intersected 5m at 1.33% U_3O_8 at Camel Flat (Energy Metals Ltd), and 7m at 0.14% U_3O_8 at Afghan Swan (Thundelarra Exploration Ltd) (Northern Territory Government Report, March 2013).

Sedimentary rocks of the Ngalia Basin were derived from, and deposited on felsic granite gneiss and schist of the Arunta Block which are significantly enriched in uranium. The Yulyupunya Granite Gneiss (1780Ma) and the Southwark Granite Suite, for example, contain up to 22.5ppm uranium (Young et al. 1995). Early shallow marine conditions were followed by continental conditions culminating in the Mount Eclipse Sandstone which was deposited in response to tectonic uplift and erosion of the Arunta Block at 350Ma to 370Ma. Importantly as uranium reductant, carbonaceous material is also common with a 7m thick unit of lignite reported (Spark, 1975).

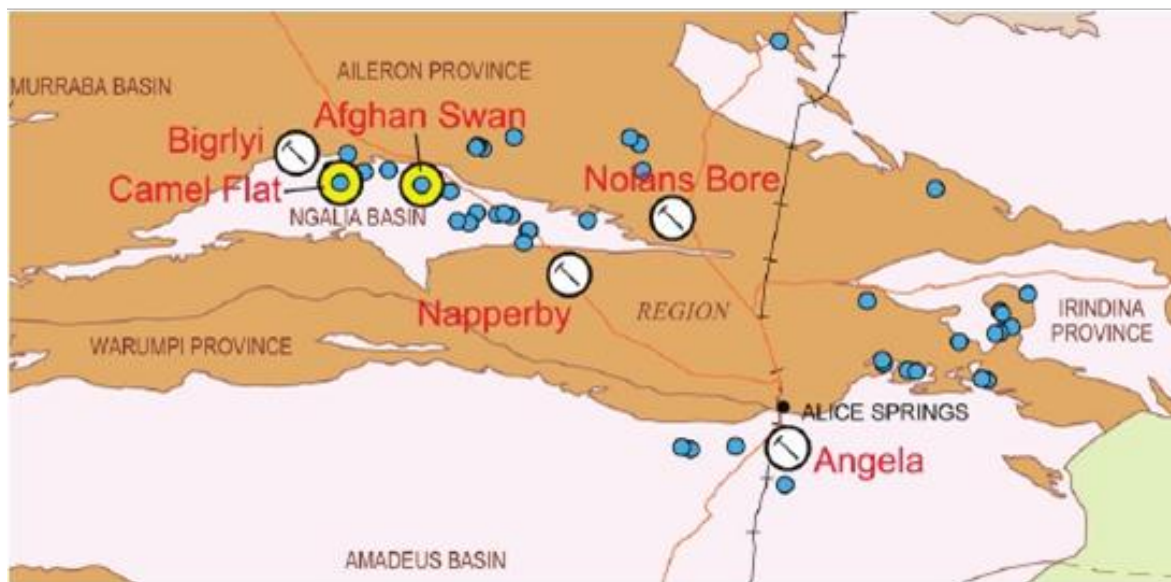


Figure 4.2 Uranium occurrences in and adjacent to the Ngalia Basin [uranium occurrences shown in blue. Yellow: most recent exploration activity. Advanced or significant underdeveloped occurrences shown with pickaxe. (Northern Territory Government Report, March 2013)].

Several occurrences of calcrete-hosted uranium within and to the south of the Ngalia Basin have been identified. The most significant deposit, Napperby (New Well) (Figure 3.1 and Figure 4.2) contain an inferred resource of 9.34Mt U_3O_8 ore at a grade of 0.036% U_3O_8 (Northern Territory Government report, March 2013). Napperby (New Well) is situated in the drainage system of Napperby River and Lake Lewis, a playa lake system (Figure 3.1).

Minor uranium prospects and occurrences categorised as metasomatite and intrusive-type uranium are located within the Aileron and Irindina provinces of the Arunta Region, particularly in the Harts Range, Entia Dome and Reynolds Range areas. The region is under-explored and the possibility exists for further discoveries of these styles of uranium deposits (Lally and Bujwah, 2006). The Nolans Bore mineralisation of fluor-apatite occurs in the southeastern part of the Reynolds Range, 13km northwest of Aileron.

5. INTERPRETATION AND URANIUM PROSPECTIVITY

An assessment of the Napperby uranium project for sandstone-hosted, surficial and metasomatite uranium deposits has been carried out by Coffey Mining Pty Ltd. The assignment was to undertake a compilation of geological, geophysical, topographical and historical open file data over the tenement areas and provide initial recommendations for ongoing exploration.

The current interpretation and discussion are mainly based on the associated public domain geophysical and geological data including radiometrics, aeromagnetics, gravity, and DEM, surface and solid geologies for the project area was acquired from the NTGS, and information reported by Coffey Mining Pty Ltd (2013). Reprocessing of the digital data has enhanced all of the geophysical and geological signatures and has also outlined a number of other subtle features.

5.1 Methodology

Topography (digital elevation models) and Landsat images, magnetic, gravity, radiometric, and geochemical methods are integrated into this phase on the basis of GIS for an attempt to correlate the features observed from geological maps. This interpreted result derived from the integrated datasets will be tested and improved by application of new drillholes.

All coordinates listed in this report are in map projection MGA94, Zone 53 (GDA94). The targeting process was undertaken as follows:

- Import of the above into ArcGis and sub-setting into different sample types and grade ranges for presentation and analysis.
- Examination of fact geology and surface geochemical results and to provide geological information for targeting.
- Identification of available airborne geophysical and remote sensing data.
- Review of all data mentioned above to identify uranium targets.
- Identification and listing of drilling targets with the potential to contain significant mineralisation.
- Recommendation of effective methods for exploring uranium mineralisation in the project area.

Topography – Digital Elevation Model (DEM)

Topography over the western and middle third of the tenement EL 29202 is relatively lower and flat, with some variation except for highs in areas of high-order drainage systems (blue -creeks and watercourses) which drain into creek systems to the north across the tenement EL 29202 (Figure 5.1). Gentle undulating hills dissected by flat-lying watercourses and creeks cover the western third of the tenement EL 29202. The

eastern third of the exploration licence EL 29202 consists of undulating hills with gently sloping to the north (Figure 5.1).

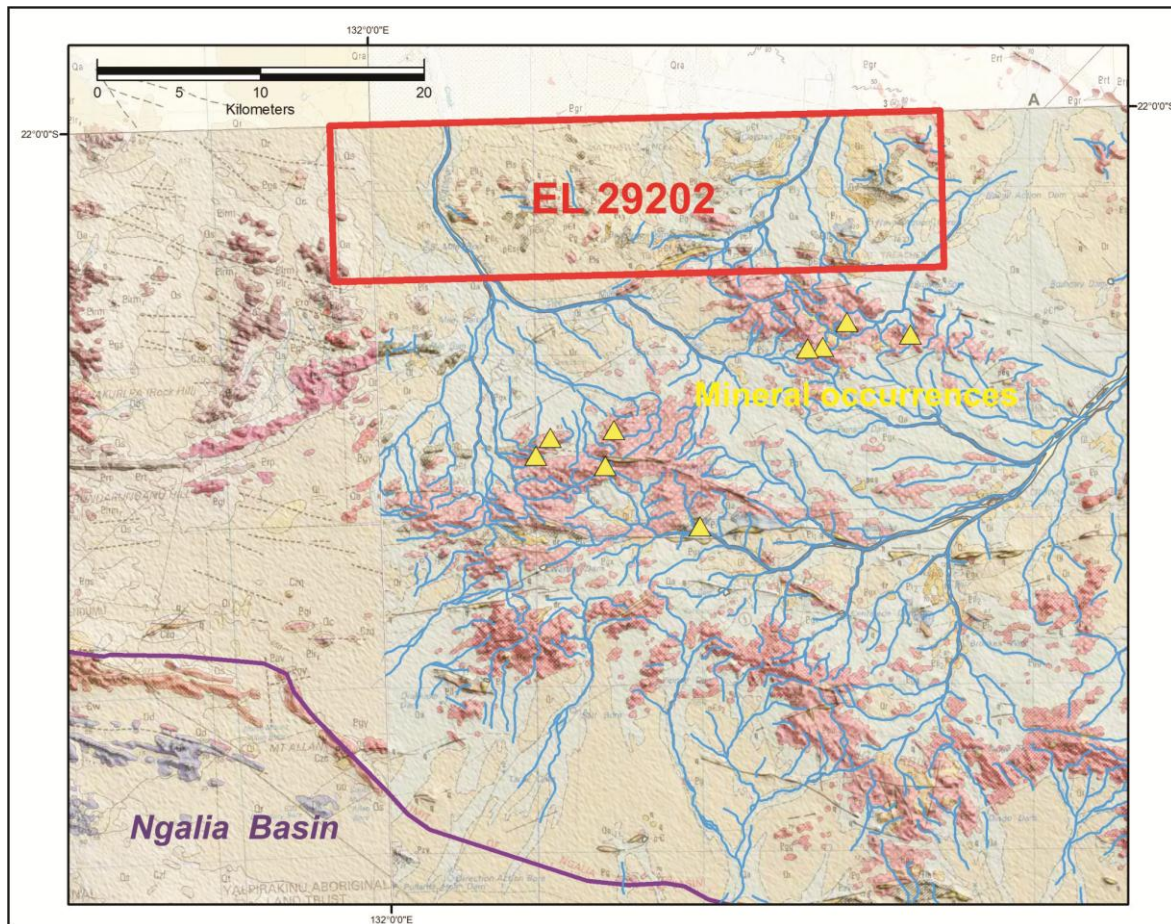


Figure 5.1 Digital Elevation Model (DEM) over surface geology.

Generally, DEM is very effective in the recognition of young (e.g., Cenozoic and/or Mesozoic) potential palaeochannel areas, as the lower topographic zones can reflect areas where some of the softer sediments have been eroded away. Therefore, DEMs can be used as surrogates for mapping the palaeochannels and related features when the modern and palaeo- geomorphologies are related spatially and genetically. This scenario should be confirmed by combining other methods, such as night-time thermal imagery, AEM/TEM and drilling. If the presence of potential palaeochannels can be determined, some segments of the palaeochannels here should be favourable for exploring sandstone-hosted and/or calcrete style uranium deposits.

Landsat TM

Landsat TM image is useful in defining spectrally anomalous zones or regions when appropriately draped over DEM to enhance terrain visualisations (Figure 5.2). This can be used to figure out the relationship between the U-source rocks and in-situ uranium or U/Th anomalies, which is helpful in exploring for metasomatite uranium mineralisation.

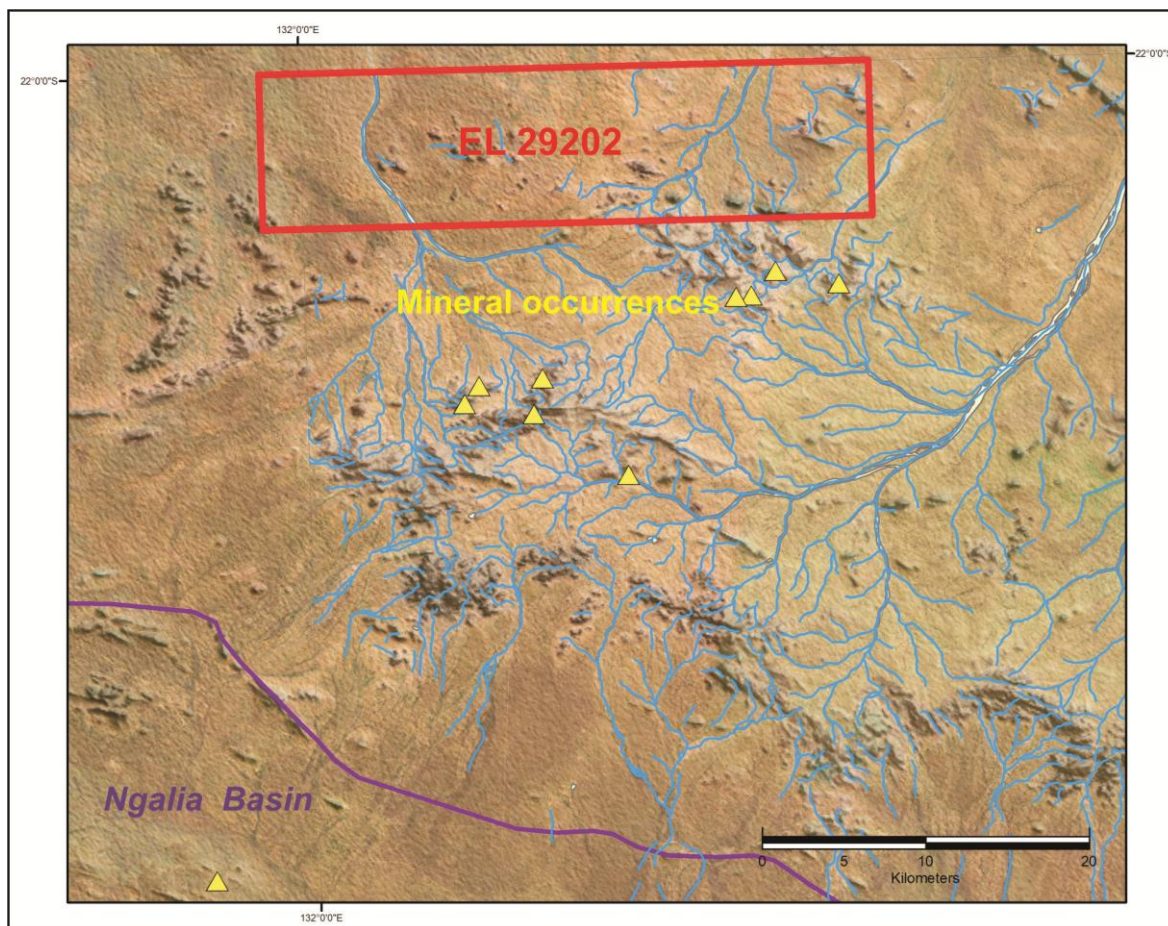


Figure 5.2 Landsat TM imagery over DEM.

Radiometric

The radiometric results, which show the distribution of gamma-ray spectrometry data, have been interpreted and compared with other data in GIS (Figures 5.3-1, 2, 3, 4, 5). These radiometric results do not appear to lead to better identification of the palaeochannels; numerous factors, such as effective depth (usually < 30 cm) of operation of the method and variable behaviour of the radioactive materials could interfere. However, the relative distribution of these radioelements in the regolith overlain bedrock as estimated from the intensity of their emitted peaks seem to directly encourage the analysis of bedrock and regolith distribution, which is useful in exploring for metasomatite and surfacial uranium deposits.

These radiometrics features suggests that the airborne radiometric anomalies are the products of the in-situ regolith developed in Arunta Block and the transported regolith deposited along the drainage creeks, which can be used for exploring metasomatite uranium deposits in the high radiometric anomalies occurring in Arunta Block and surfacial uranium deposits in the drainage creeks. Thus, it was thought that the airborne radiometric anomalies may be associated with favourable lithologies which have potential to host uranium deposits.

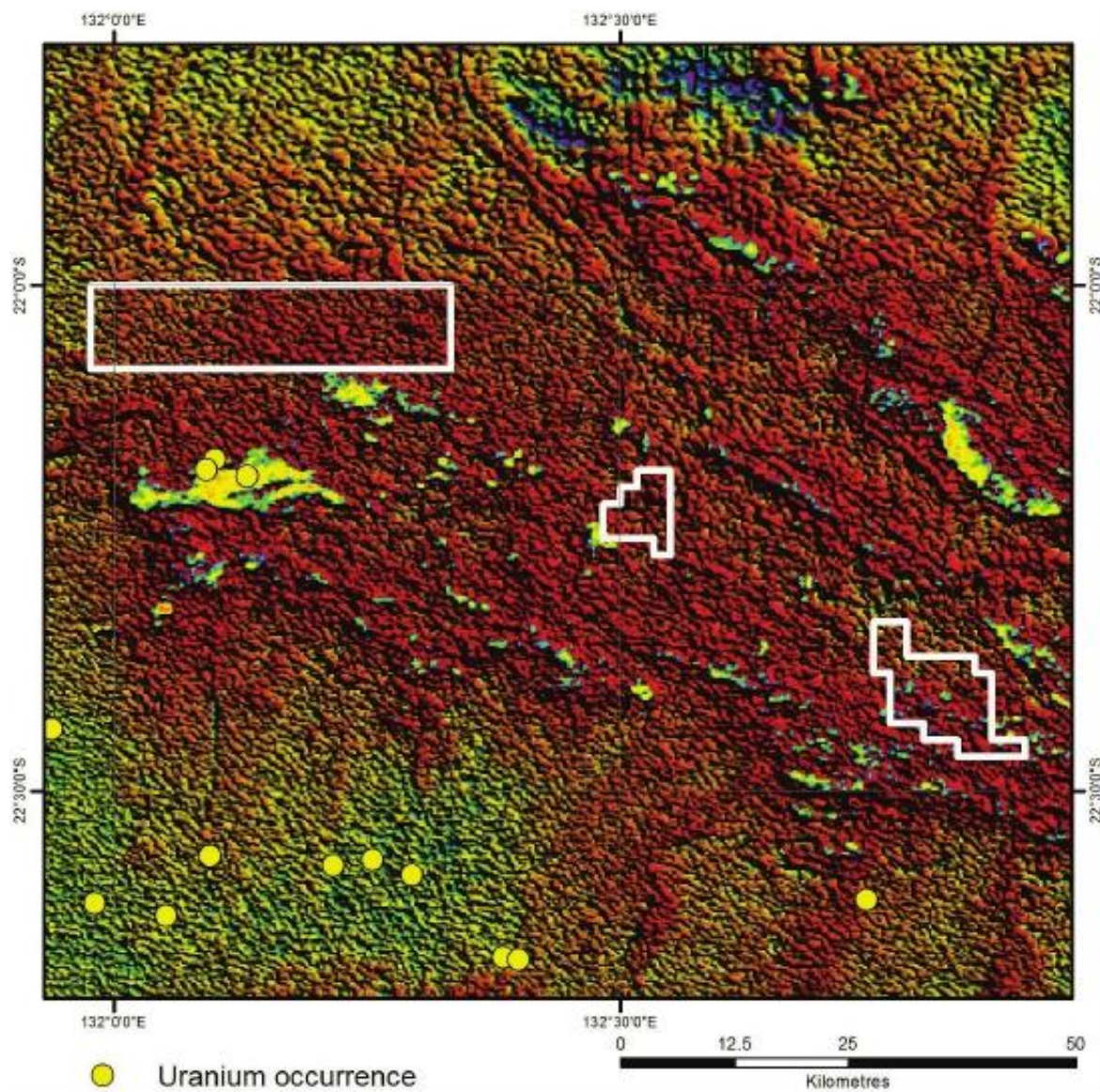


Figure 5.3-1 U radiometrics, U^{235}/Th Ratio and uranium occurrences in relation to 'Wuhua' tenements.

U radiometric image (Figures 5.3-1, 2, 3, 4, and 5) show an elevated uranium response for the Arunta Block along the northeastern margin of the Ngalia Basin. The uranium-enriched nature of the felsic basement gneisses and granites are considered a fertile source for subsequent uranium enrichment processes. The U^{235}/Th ratio anomalies coincide with a number of reported uranium occurrences in the Arunta Block.

The anomaly immediately south of tenement EL 29202 (Figure 3.3) is located within the Wangala intrusive granite to the south of the arcuate shear.

The areas correspond topographically with broad diffuse drainage areas, where U, being a mobile element, is stripped from the regolith easier than in areas of less drainage (Figure 5.3-4). The relationship between regolith and drainage system shows significance in defining areas anomalous in uranium (Figure 5.3-4).

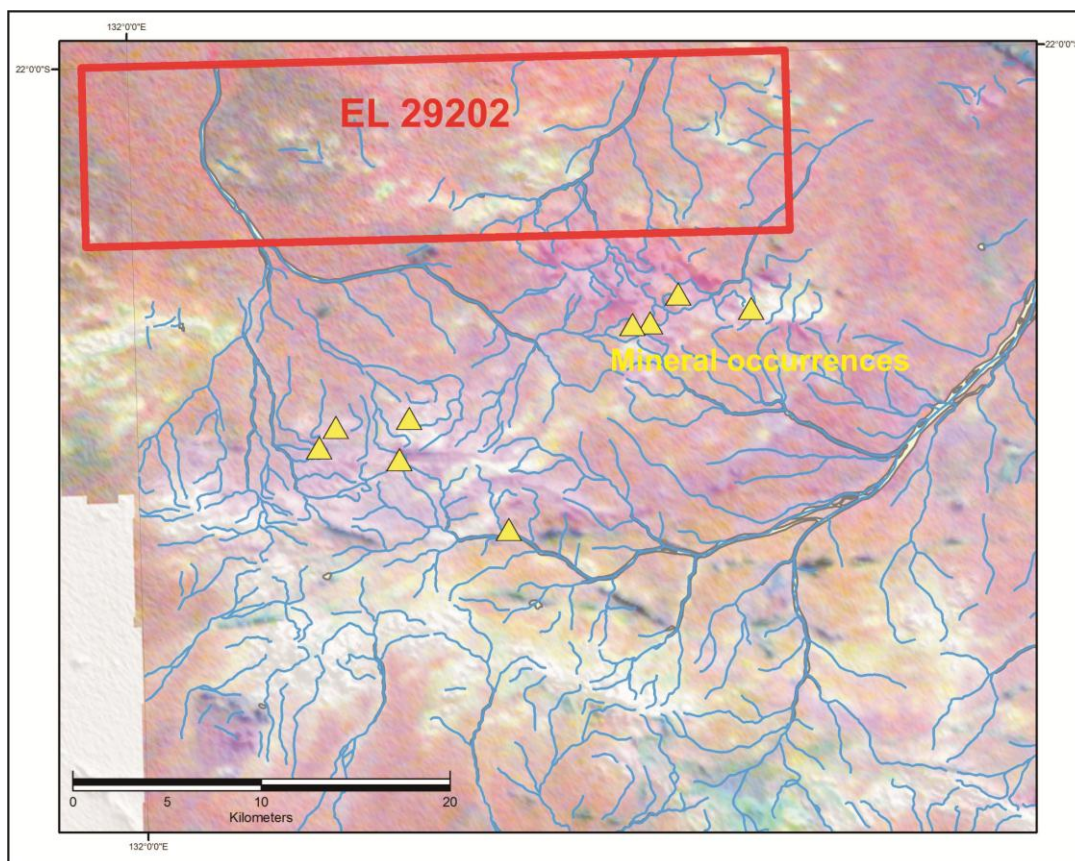


Figure 5.3-2 KThU radiometrics imagery and mineral occurrences in relation to tenement.

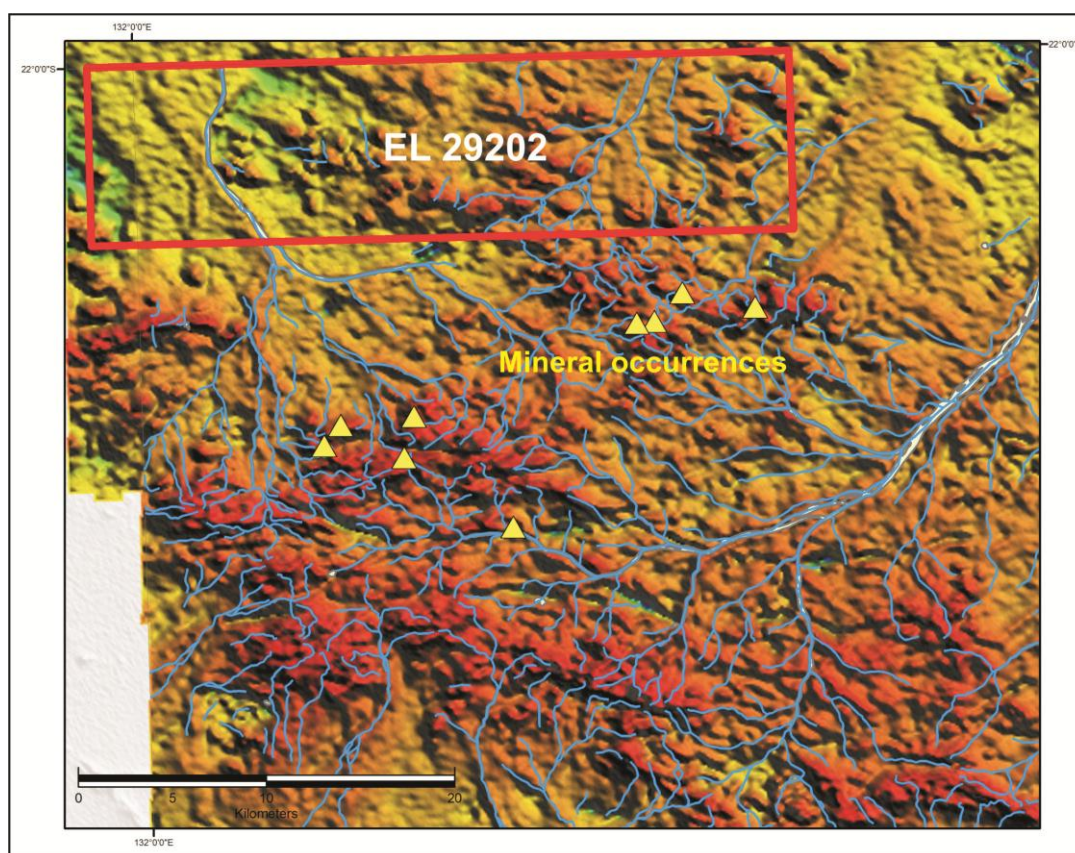


Figure 5.3-3 Radiometrics TC imagery and mineral occurrences in relation to tenement.

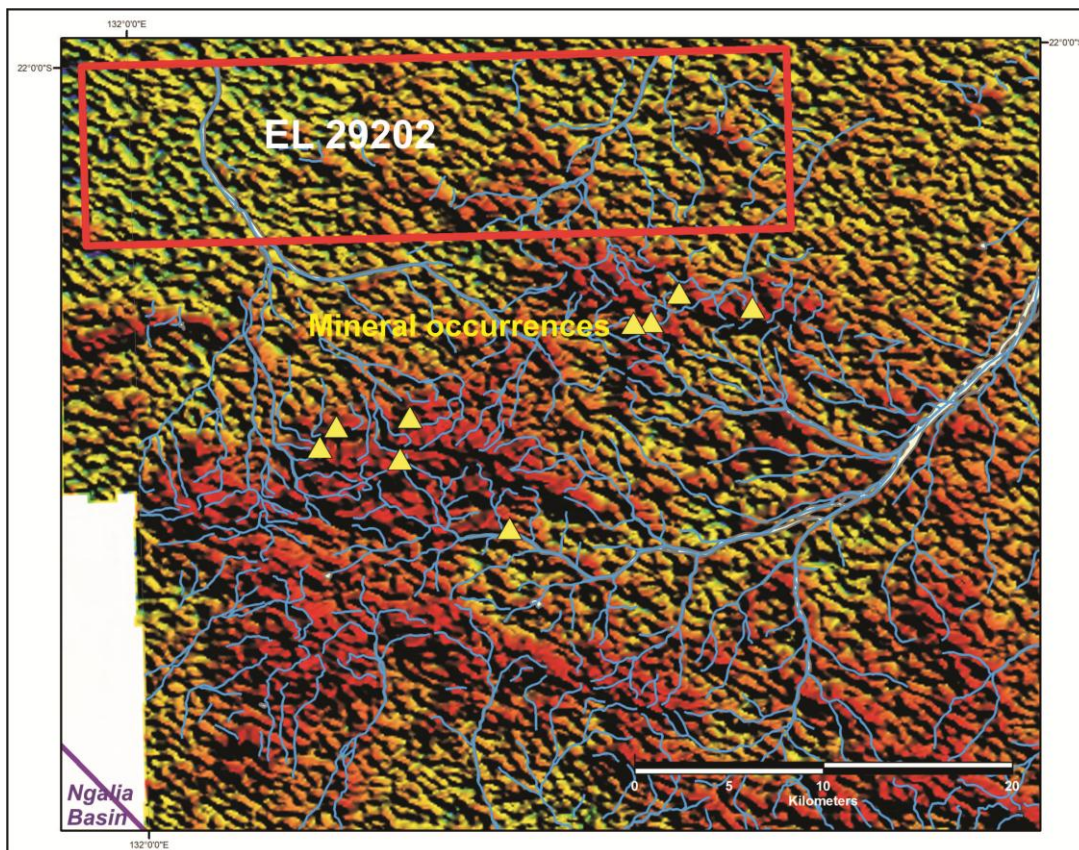


Figure 5.3-4 U radiometrics imagery and mineral occurrences in relation to tenement.

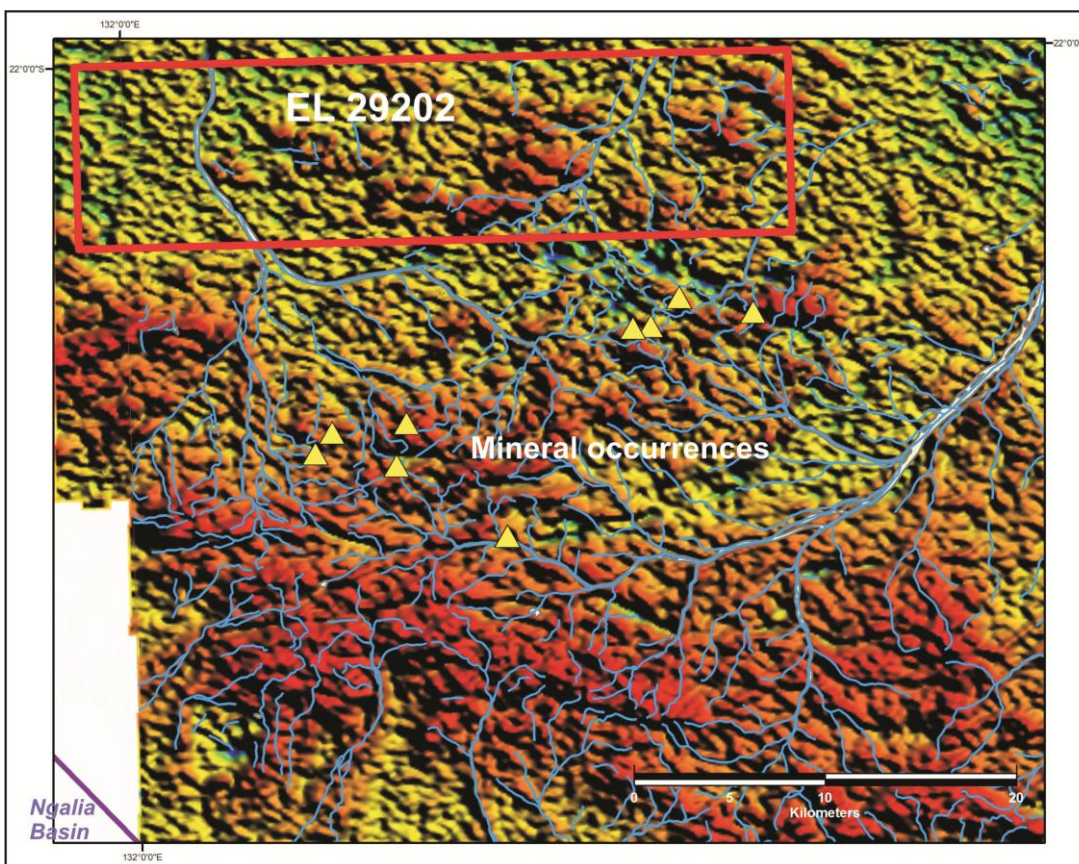


Figure 5.3-5 Th Radiometrics imagery and mineral occurrences in relation to tenement.

Thorium correlates moderately well with the radiometric anomaly (Figures 5.3-1, 2, 3 and 5) and topographic highs (Figure 5.1); U and Th weakly correlate with each other (Figures 5.3-4 and 5).

Total Magnetic Intensity (TMI)

Magnetic high features are interpreted as Fe-bearing metamorphic basement and fault-like images, with some features apparent showing relatively shallow basement to the Ngalia Basin (Figures 5.4-1 and 5.4-2). The Ngalia Basin margin is clearly defined by the total magnetic intensity data (Figures 5.4-2 and 5.5) and the regional basement geology map (Figure 3.1).

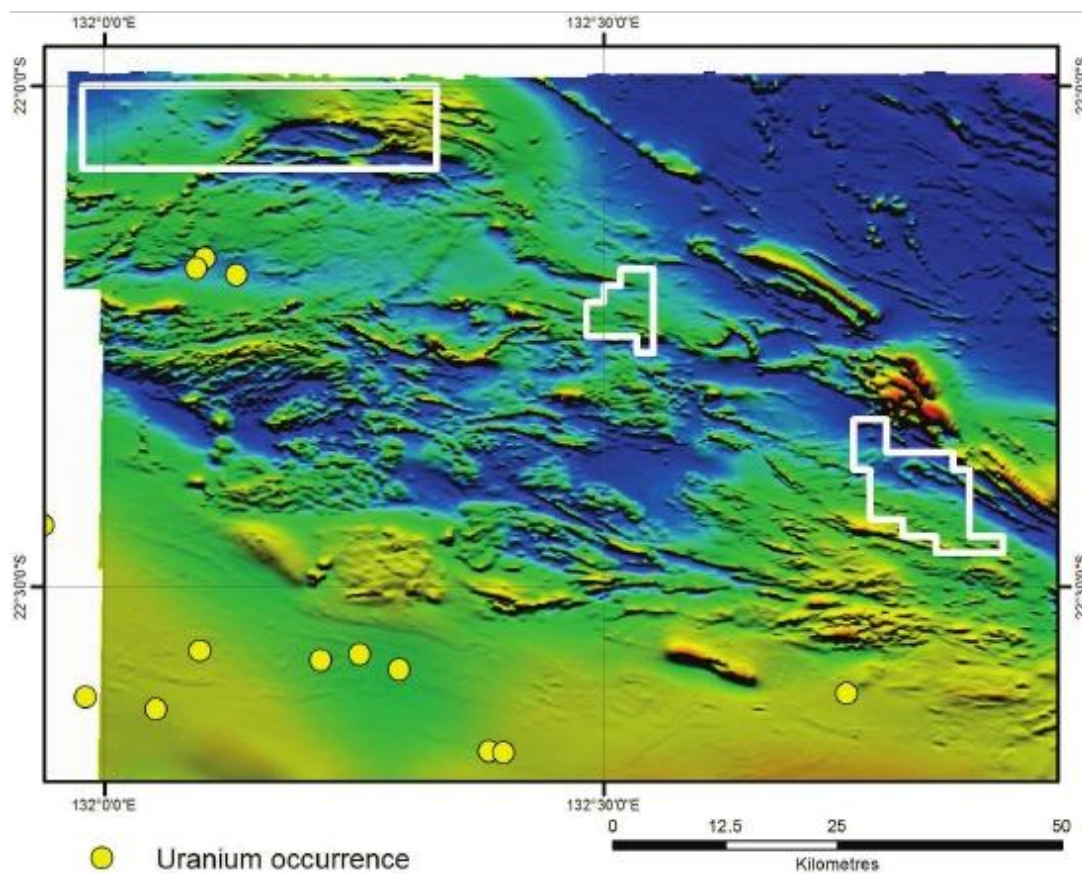


Figure 5.4-1 Total Magnetic Intensity (TMI) of the 'Wuhua' project area.

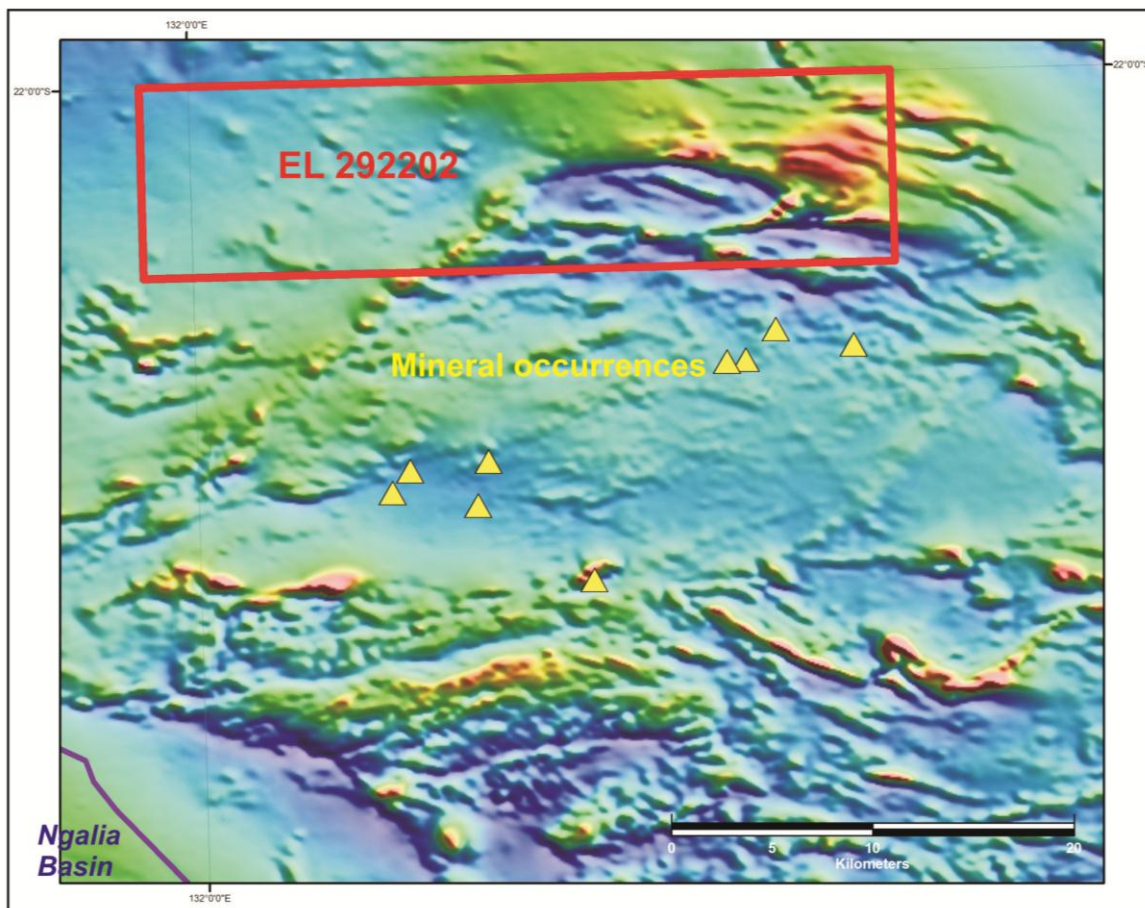


Figure 5.4-2 Total Magnetic Intensity (TMI) of EL 29202 showing Ngalia Basin and mineral occurrences.

Mesozoic and/or Cainozoic paleovalleys are not usually visible on regional magnetic data (Figure 5.4), as they are relatively shallow features, but careful use of detailed surveys may assist in locating channel deposits (e.g., basalt buried within the paleovalley generally showing positive magnetic anomaly).

Gravity

Because of normally small scales of palaeovalleys, gravity method should use high resolution survey, especially when it used with DEM, Landsat, NOAA, or AEM images. The Ngalia Basin margin is also clearly defined by the gravity data (Figure 5.5) and the regional basement geology map (Figure 3.1).

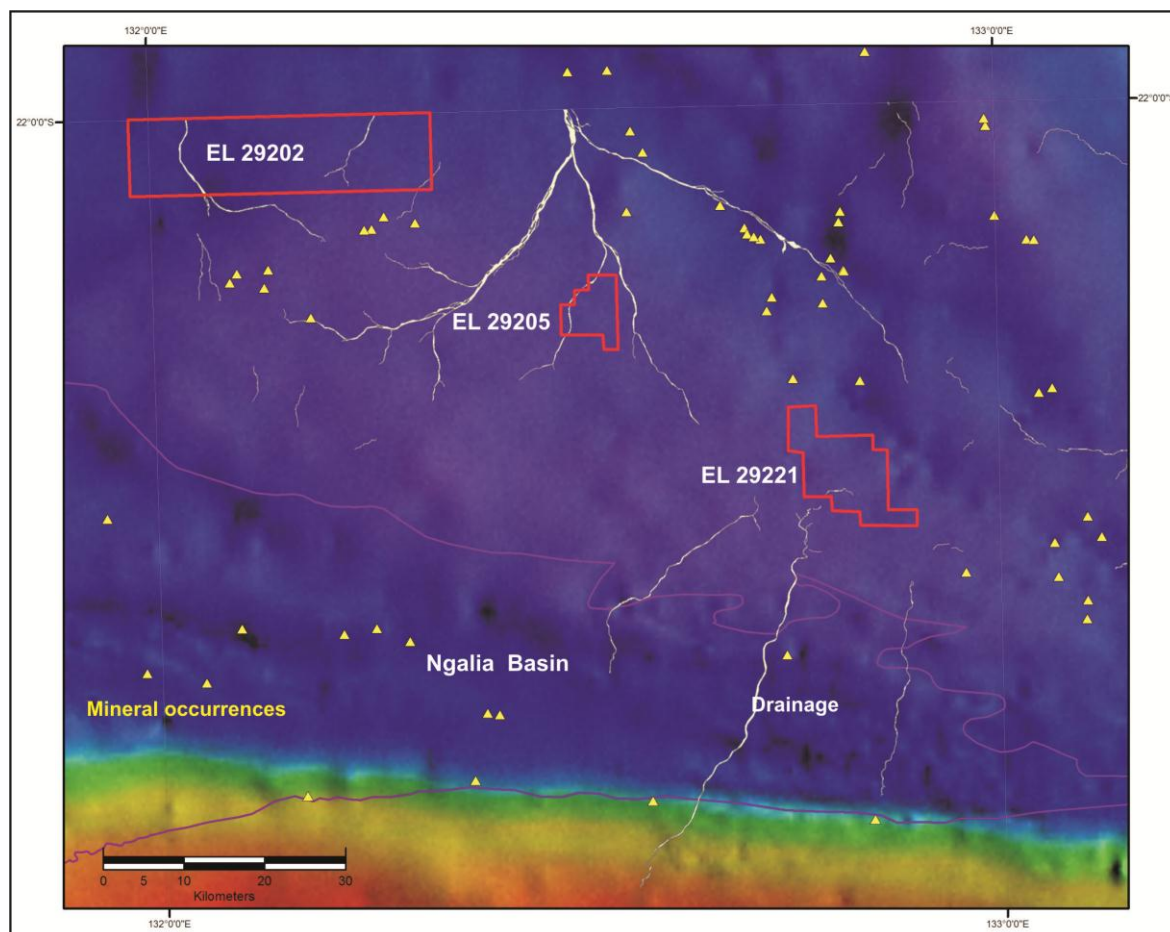


Figure 5.5 Gravity of the ‘Wuhua’ project area showing Ngalia Basin and mineral occurrences.

5.2 ASTER Night-Time Thermal Infra-Red Data Interpretation

5.2.1 Introduction

Night-time Thermal Infra-Red (NTIR) data from the ASTER satellites have been acquired over “Wuhua” Napperby Uranium Project area (ELs: 29202, 29205, and 29221) (see Appendix 1). Overall the NTIR technology can provide useful information, particularly when used with other informative data such as Landsat TM, geological map and non-marine sedimentology, for palaeovalley-related mineralization in sedimentary host rocks which have no surface expression.

The coarse spatial resolution of the NOAA NTIR data (1.1 km spatial resolution, the frequency of overpass and the low cost of the data) is effective to delineate larger anomalous zones of contrasting temperature variation between the Channel sediments and the surrounding bedrocks. The high spatial resolution of the ASTER NTIR data (90m spatial resolution Level 1B 5-band TIR, the frequency of overpass and the relatively high cost of the data), however, is valuable in identifying the fine framework of the palaeochannels. Atmospheric effects resulting from cloud and wind moisture seen in ASTER NTIR datasets may obscure thermal boundaries. Thus, cloud cover and wind-shear can affect the quality of the data for interpretive work, but numerous scenes can be acquired in the

conditions of wind and cloud free due to the frequent overpass of the satellite and the value of the data. Five night time ASTER scenes images used were acquired early morning flight paths (for maximum thermal contrast) of 27 March 2005 (2 scenes), 30 October 2005 (1 scene) and 13 March 2014 (2 scenes).

Subsurface moisture (e.g., groundwater trapped in buried sediments) contributes to sediments ability to cool down and heat up at a different rate to that of surrounding bedrock. It is this feature of sediments that responds well to thermal analysis. Thermal bands from NOAA and ASTER imaging systems supply information which can be used to calculate variations in temperature from surface and near surface lithologies. The optimal time for these measurements is early morning and late evening when the temperature contrast will be the greatest.

5.2.2 Data and Results

The main remotely sensed datasets used in this interpretation are elevation data, ASTER NTIR data, Landsat 7TM and the U channel of regional scale airborne radiometrics. Standard geological mapsheets and explanatory notes were referred to for geological units.

The ASTER satellite has 5 bands acquiring data in the thermal infrared. The concept of identifying temperature variations is similar to NOAA NTIR (1.1km pixel); the key difference between the two satellites is the higher spatial resolution of the ASTER data (90 m pixel). Five night time ASTER scenes images were acquired over “Wuhua” Napperby Uranium Project area (Figure 5.6). Each scene covers an area of 60km x 60km. Cooler thermal responses appear dark on NTIR data.

5.2.3 Interpretation

NTIR data is another geophysical tool for mineral exploration which provides indirect information about concealed palaeomorphologies. Depending on the source data resolution can vary but it is inexpensive an excellent first pass to establishing areas of focus for uranium targeting. The detector and orbital configuration of NOAA-AVHRR and ASTER NTIR data could make it a very useful remote-sensing method in that it detects temperature variations in palaeochannel sediments related to the elevated moisture content of the channel. The application and findings of ASTER NTIR data over the Napperby Project area comprise three ELs: EL 29202, EL 29205 and EL 29221.

Interpretation of palaeosystems from ASTER NTIR data in the Napperby project was based on principals of remote sensing, sedimentology and geomorphology. Integration of these data delineated main trunks and tributaries of possibly stacked channel sediments (Figure 5.3). Channel sediments retain moisture due to their porosity and permeability forming a direct contrasted against the impervious granites surrounding them. Thermal responses which may be relevant to uranium exploration in the region fall into one of three categories, palaeochannels, palaeoalluvial fans and zones of congestion such as creek intersections and creek truncations due to structural controls. Palaeochannel centrelines with strong thermal contrasts have been delineated from the integration of ASTER and NOAA NTIR. In some cases these follow present day drainage.

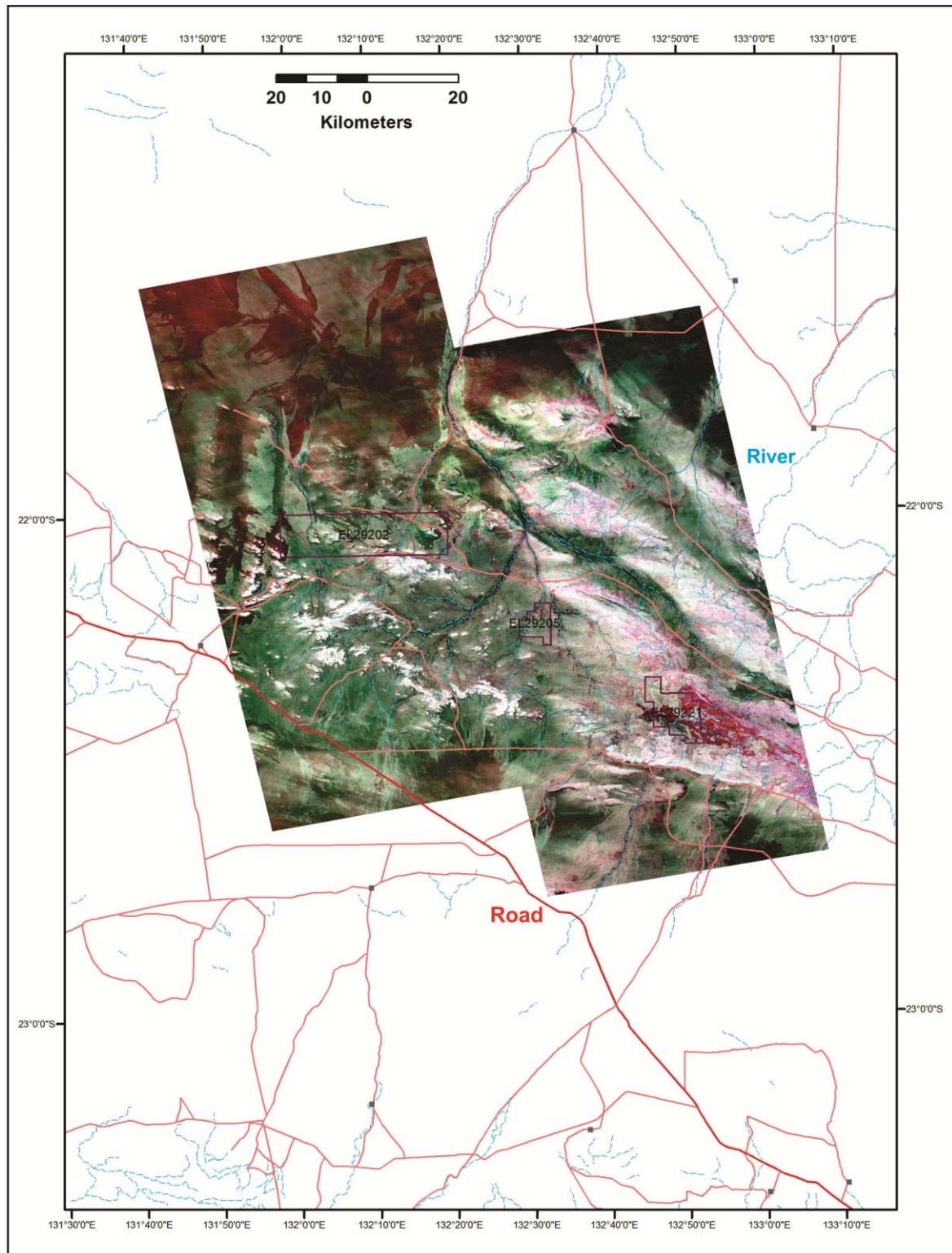


Figure 5.6 ASTER NTIR (TIR432) coverage over the Napperby project area.

Elevation data was integrated into this NTIR data interpretation (Figure 5.7 DEM+ASTER). The coincidence between the topographic lows of the elevation models and dark zones of the ASTER NTIR images highlight the subsurface textures which are related to concealed geomorphic landscapes such as incised valleys, sand dunes, river deltas and flood plains.

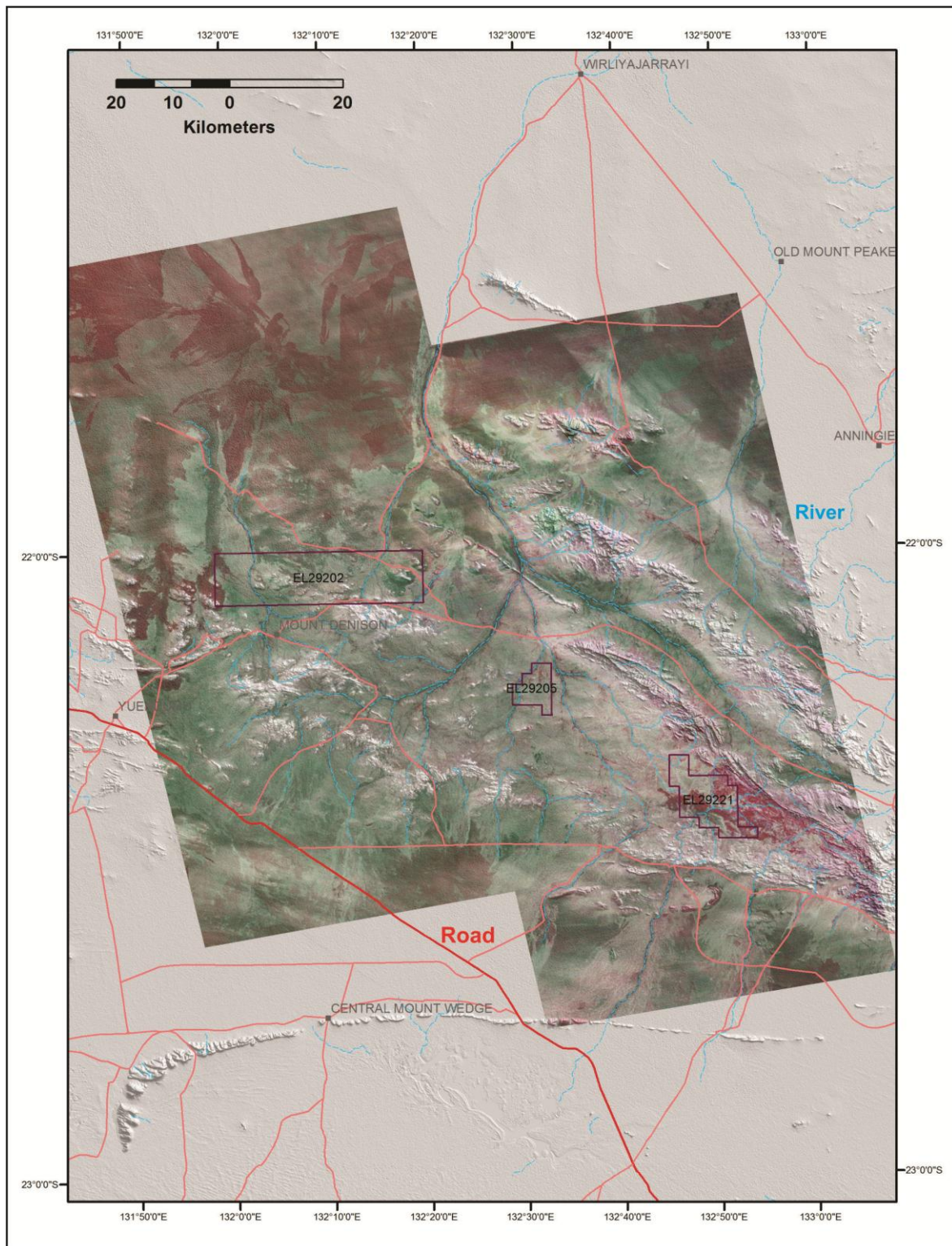


Figure 5.7 ASTER NTIR (TIR531) coverage over the DEM and Napperby project area.

Results of ASTER NTIR data applied to this region demonstrate suitability of the data for palaeochannel interpretation. The (palaeo-) landforms recognised by using ASTER NTIR include concealed palaeochannels, alluvial fans and regions of accumulated transported sediment. The direct surface expressions of buried palaeochannels are associated with topographic lows or drainages/creeks (Figure 5.7). Subsurface regions with cooler thermal responses interpreted as variations in the palaeovalley architecture require

follow up investigations (Figure 5.8), such as AEM/TEM and/or drilling. The integration of elevation data from the shuttle radar highlighted structural trends roughly showing surface expression of topographic lows (Figure 5.9). Channels and fans showed characteristic dendritic distribution of cool thermal sediments and dark zones of irregular polydons were noted in areas of sediment accumulation.

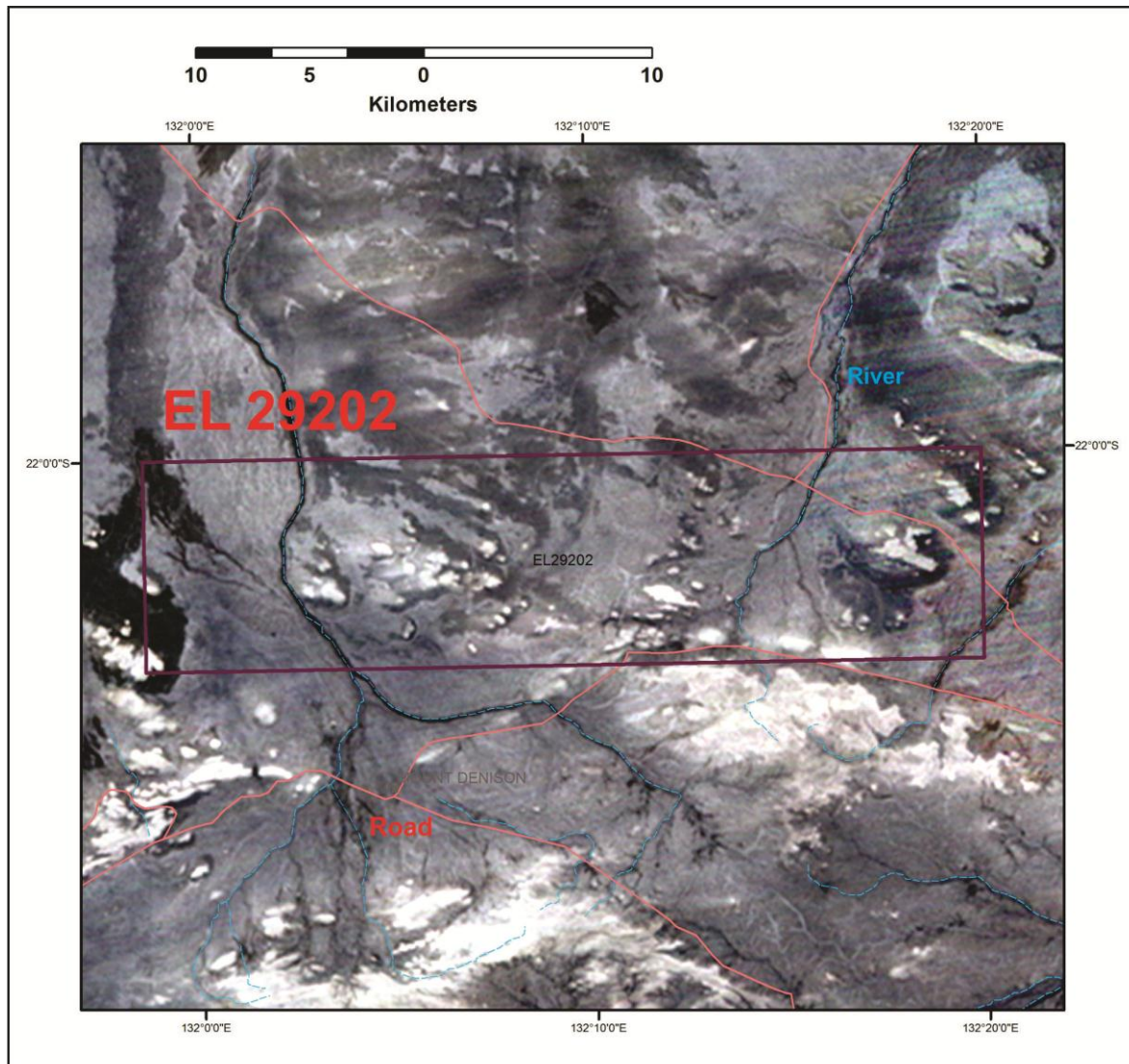


Figure 5.8 ASTER NTIR coverage over the EL 29202.

Palaeovalley fills may host units for uranium in sandstone or calcrete style deposits. Also, alluvial fan systems and sheet sands in the basin margins, as demonstrated at Beverley Four Mile in the Frome Region of South Australia and in the case of Kazakhstan style uranium mineralization, are typical of hosting secondary uranium mineralisation. Napperby uranium project area comprises both palaeochannels and alluvial fans adjacent to and incising granitic source rocks with observed elevated uranium levels from airborne radiometric surveys (Figure 5.10).

ASTER NTIR data has highlighted a series of fans draining from granites with elevated U levels. These trend NE/ across EL 29202 (Figure 5.8). Satellite imagery from Landsat TM (Figure 5.2) and geological map (Figure 3.3) show the present day distribution of sediments from the topographic highs via fan systems. NTIR ASTER highlights the

displacement, preferred channels and extent of the palaeo-fan lobes (Figure 5.11). Thermal responses in the lobes vary, showing sinuous dendritic channels and dark polygons of “ponding” where sediments have accumulated.

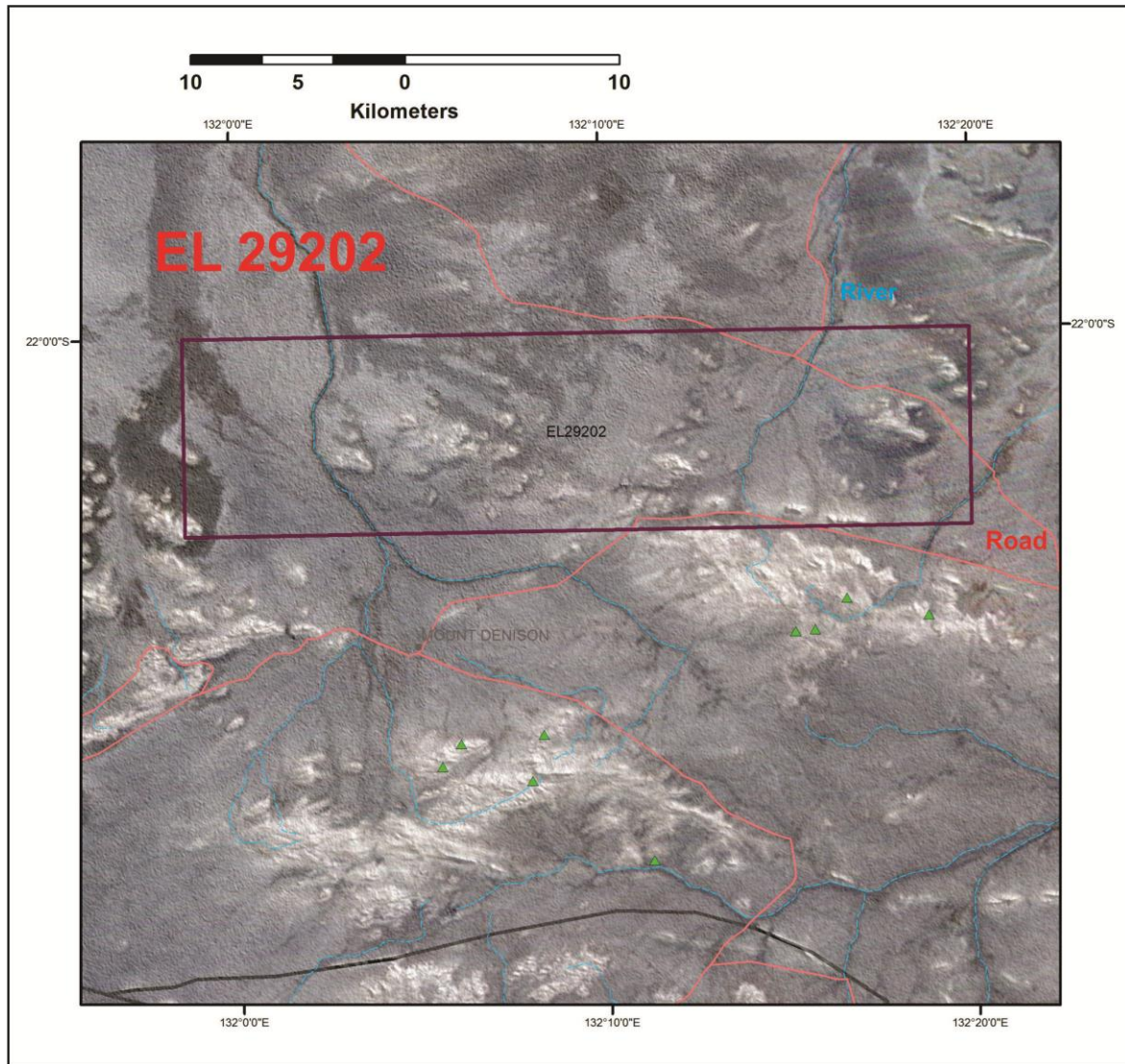


Figure 5.9 ASTER NTIR coverage over the DEM and EL 29202.

The uranium channel of the radiometrics shows present day drainage systems from the ranges have slightly elevated uranium levels. Buried channels and fans have no associated radiometric anomaly at the surface. The dark dendritic patterns they form have no surface uranium signature but still indicate transport direction from the “hottest” granites. Fractured and deeply weathered near surface units may have similar thermal response which may contribute to palaeochannel thermal response.

Geological maps of the area show numerous small outcrops of basement surrounded by Cainozoic units (Figure 3.3). It can be assumed that this cover sequence is shallow or resulted from severe weathering. Any event which generates porosity and permeability whether localised fracturing/jointing and weathering or on a larger scale such as shear zones or sedimentary units themselves will produce a thermal response. Some of the thermal responses may be due to shallow weathered in situ basement sparsely

outcropping which has similar moisture retention abilities of transported sediments. As this interpretation is based only on NTIR data cold zones with thermal contrasts, some areas whether sedimentary in origin or weathered may fall into this category. Therefore, knowledge of the geology and its weathering ability needs to be incorporated into the prospective model of the region.

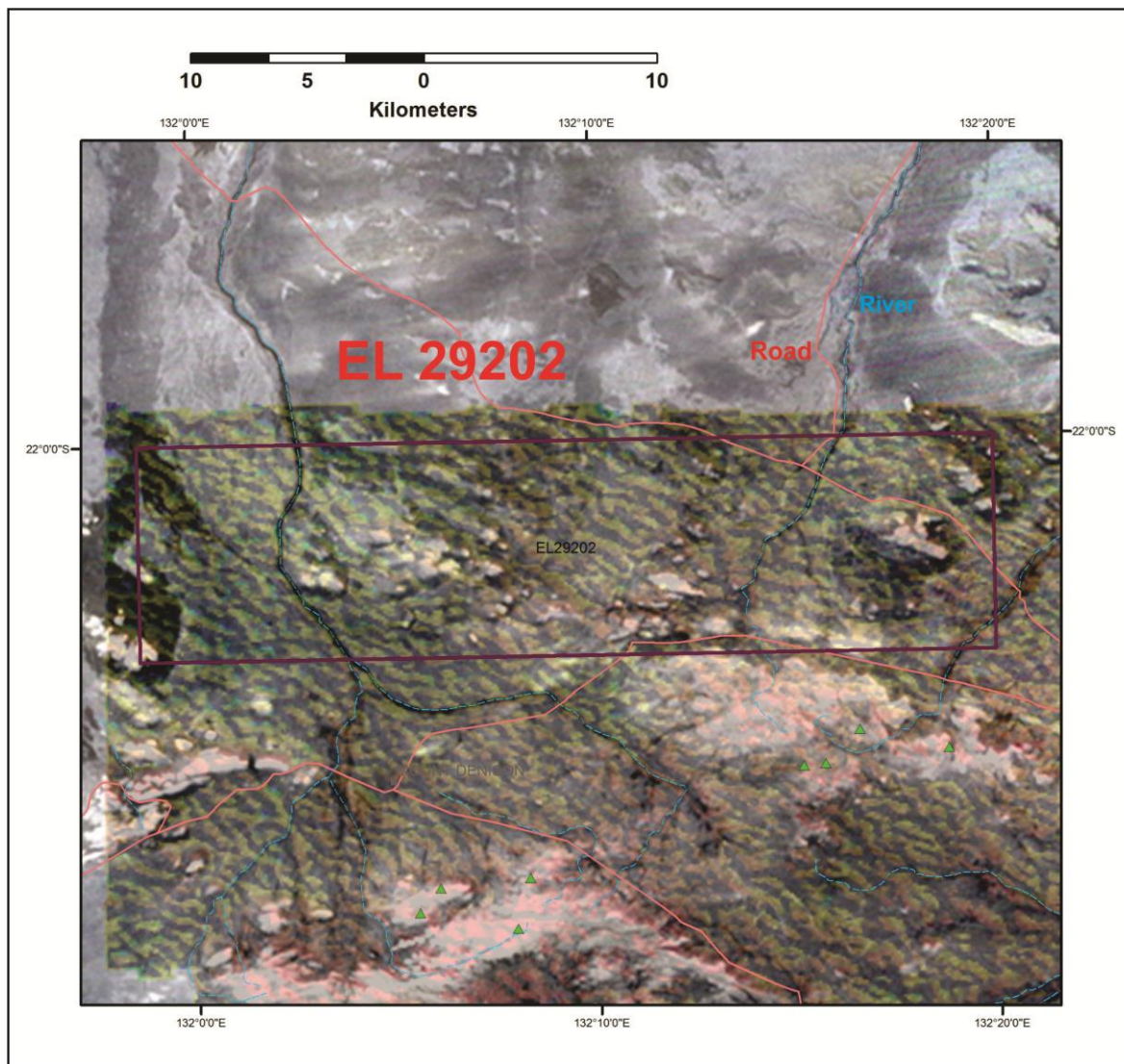


Figure 5.10 ASTER NTIR coverage over the U radiometrics and EL 29202.

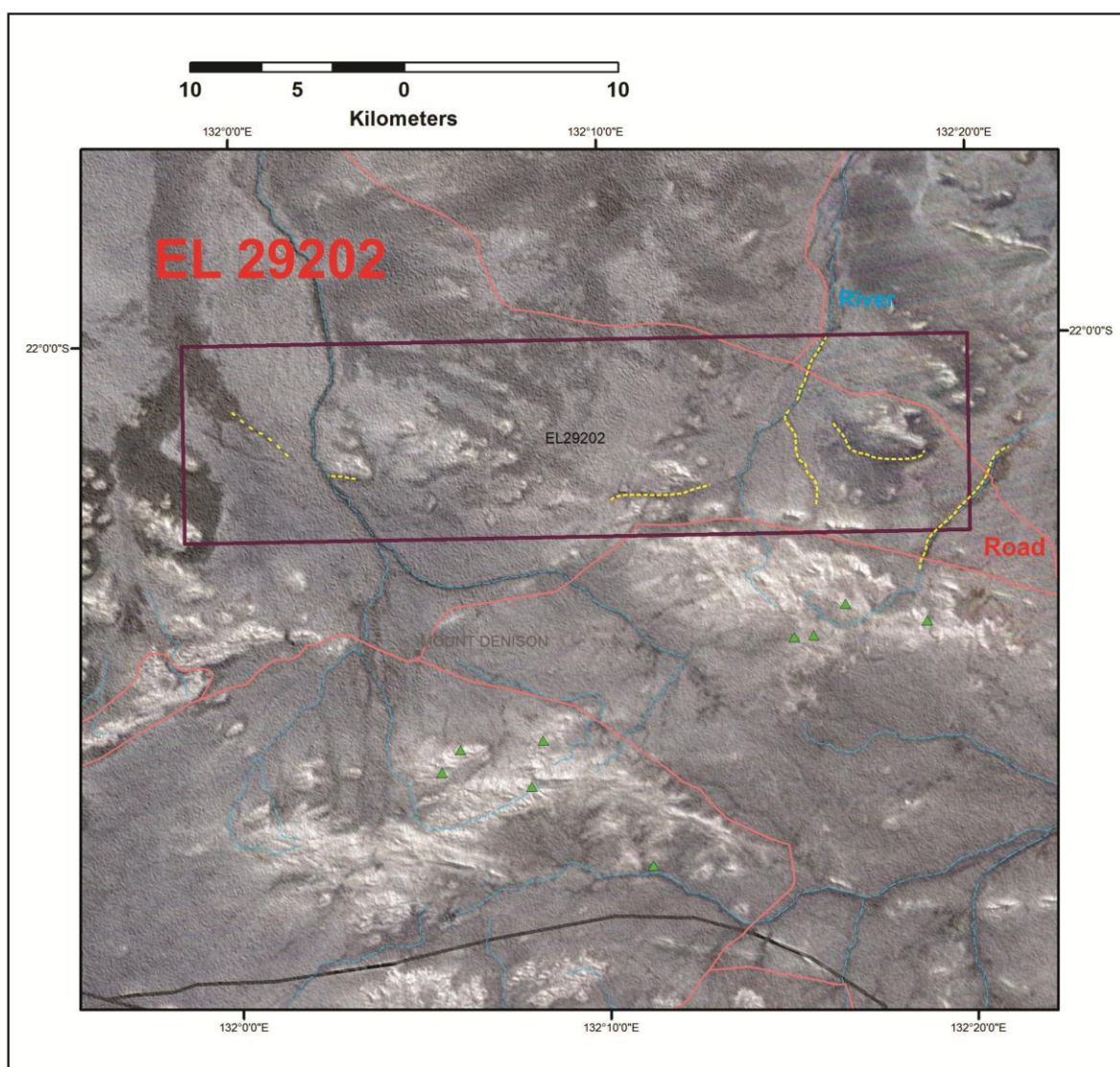


Figure 5.11 Interpreted channels draped over the DEM and ASTER NTIR images, and EL 29202, showing cool zones (yellow).

5.3 Surface Geochemistry

There were 22 surface soil samples taken in 2015 over two interpreted paleovalleys of Figure 5.12. The samples collected from EL 29202 are summarized in Table 5.1. The sample results are shown in Table 5.2. The original analysis results are included with this technical report as Appendix 2. Figures 5.12 and 5.13 below show the sample locations within EL 29202.

Al, Ca, Cr, Cu, Fe, K, Li, Mg, Mn, Na, Ni, P, S, Sc, Ti, V, Zn have been determined by Inductively Coupled Plasma (ICP) Optical Emission Spectrometry. Ag, As, Ba, Be, Bi, Cd, Ce, Co, Cs, Dy, Er, Eu, Ga, Gd, Hf, Ho, In, La, Lu, Mo, Nb, Nd, Pb, Pr, Rb, Re, Sb, Se, Sm, Sn, Sr, Ta, Tb, Te, Th, Tl, Tm, U, W, Y, Yb, Zr have been determined by Inductively Coupled Plasma (ICP) Mass Spectrometry. Au has been determined by Atomic Absorption Spectrometry.

Table 5.1 Summary of samples collected from EL 29202.

Traverse	Sample numbers	No. Samples	Type Analysis	Type Analysis
CS	12	CS-01 – CS-10	Soil/rock chip	Al,Ca,Cr,Cu,Fe,K,Li,Mg,Mn,Na,Ni,P,S, Sc,Ti,V,Zn;Ag,As,Ba,Be,Bi,Cd,Ce,Co, Cs,Dy,Er,Eu,Ga,Gd,Hf,Ho,In,La,Lu,Mo, Nb,Nd,Pb,Pr,Rb,Re,Sb,Se,Sm,Sn,Sr,Ta, Tb,Te,Th,Tl,Tm,U,W,Y,Yb,Zr, Au.
CS(01)	10	CS(01)-01 – CS(01)-10	Soil/rock chip	Al,Ca,Cr,Cu,Fe,K,Li,Mg,Mn,Na,Ni,P,S, Sc,Ti,V,Zn;Ag,As,Ba,Be,Bi,Cd,Ce,Co, Cs,Dy,Er,Eu,Ga,Gd,Hf,Ho,In,La,Lu,Mo, Nb,Nd,Pb,Pr,Rb,Re,Sb,Se,Sm,Sn,Sr,Ta, Tb,Te,Th,Tl,Tm,U,W,Y,Yb,Zr, Au.

Table 5.2 Geochemical analysis results of EL 29202

Element	E MGA Z53	N MGA Z53	Ag	Al	As	Ba	Be	Bi	Ca	Cd
Units			ppm	ppm	ppm	ppm	ppm	ppm	ppm	ppm
Detection Limit			0.2	100	1	0.5	0.5	0.1	100	0.5
Sample_No.										
CS-01	208800	7557300	<0.2	5.73%	<1	684	1.5	<0.1	2700	<0.5
CS-02	208850	7557373	<0.2	5.63%	3	683	1.5	<0.1	2900	<0.5
CS-03	208900	7557373	<0.2	5.78%	2	880	1.0	<0.1	2100	<0.5
CS-04	208950	7557348	<0.2	5.27%	3	655	1.5	0.2	1900	<0.5
CS-05	209000	7557348	<0.2	5.37%	3	745	1.5	0.2	1900	<0.5
CS-06	209050	7557348	<0.2	5.67%	2	838	1.5	<0.1	2800	<0.5
CS-07	209100	7557348	<0.2	5.78%	3	913	1.0	<0.1	1300	<0.5
CS-07 Rock	209110	7557339	<0.2	7.12%	2	884	2.5	<0.1	7600	<0.5
CS-08	209150	7557348	<0.2	5.58%	2	729	2.0	<0.1	2400	<0.5
CS-09	209200	7557348	<0.2	5.59%	2	708	1.5	<0.1	1900	<0.5
CS-09 Rpt	209210	7557336	<0.2	5.67%	3	735	2.0	0.2	1900	<0.5
CS-10	209250	7557311	<0.2	5.58%	<1	705	1.5	0.2	1700	<0.5
CS(01)-01	217294	7563600	<0.2	4.80%	<1	555	5.0	0.4	1200	<0.5
CS(01)-02	217294	7563550	<0.2	4.70%	2	528	4.5	0.4	1100	<0.5
CS(01)-03	217269	7563500	<0.2	4.49%	2	506	5.5	0.5	1200	<0.5
CS(01)-04	217245	7563450	<0.2	3.88%	2	427	7.5	0.6	900	<0.5
CS(01)-05	217232	7563400	<0.2	4.58%	<1	507	7.0	0.5	900	<0.5
CS(01)-06	217207	7563350	<0.2	4.29%	<1	435	8.0	22.1	1500	<0.5
CS(01)-07	217195	7563300	<0.2	4.37%	3	475	6.0	0.5	3400	<0.5
CS(01)-08	217170	7563250	<0.2	4.78%	2	529	7.5	0.8	1200	<0.5
CS(01)-09	217158	7563200	<0.2	4.78%	2	561	3.5	0.4	1300	<0.5
-CS(01)-10	217160	7563150	<0.2	4.51%	<1	478	3.0	0.4	2100	<0.5

Table 5.2 Geochemical analysis results of EL 29202 –cont.

Element	Lat.	Long.	Co	Cr	Cs	Cu	Fe	Ga	Hf	In
Units			ppm	ppm	ppm	ppm	ppm	ppm	ppm	ppm
Detection Limit			1	10	0.1	2	100	0.2	0.2	0.05
Sample_No.										
CS-01	208800	7557300	2	<10	1.5	6	1.38%	13.0	2.4	<0.05
CS-02	208850	7557373	2	<10	1.6	4	1.37%	13.0	1.2	<0.05
CS-03	208900	7557373	3	<10	1.6	6	1.47%	11.8	1.2	<0.05
CS-04	208950	7557348	3	10	2.0	8	1.62%	12.2	2.0	<0.05
-CS-05	209000	7557348	3	10	2.0	12	1.67%	12.2	2.2	<0.05
CS-06	209050	7557348	3	10	1.9	78	1.95%	13.2	2.0	<0.05
CS-07	209100	7557348	3	<10	1.7	6	1.63%	13.2	2.0	<0.05
CS-07	209110	7557339	4	<10	2.3	4	2.13%	19.0	2.6	<0.05
Rock										
CS-08	209150	7557348	4	10	2.3	10	1.98%	13.2	2.2	<0.05
CS-09	209200	7557348	3	10	2.5	8	1.87%	13.2	2.8	<0.05
CS-09 Rpt	209210	7557336	4	10	2.5	10	1.87%	13.6	2.8	<0.05
CS-10	209250	7557311	3	10	2.3	8	1.89%	13.6	2.8	<0.05
CS(01)-01	217294	7563600	<1	<10	6.3	8	9700	9.6	1.0	<0.05
CS(01)-02	217294	7563550	<1	<10	6.1	<2	9300	9.8	0.8	<0.05
CS(01)-03	217269	7563500	<1	<10	6.5	6	8200	9.4	0.8	<0.05
CS(01)-04	217245	7563450	<1	<10	5.5	<2	9100	8.8	0.8	<0.05
CS(01)-05	217232	7563400	<1	<10	6.7	4	8300	9.6	1.0	<0.05
CS(01)-06	217207	7563350	1	<10	6.3	6	9300	9.8	1.0	<0.05
-CS(01)-07	217195	7563300	1	70	6.7	176	1.32%	9.4	1.0	<0.05
CS(01)-08	217170	7563250	1	<10	6.8	4	1.20%	10.2	1.2	<0.05
CS(01)-09	217158	7563200	<1	<10	5.1	4	8500	9.6	1.2	<0.05
CS(01)-10	217160	7563150	1	<10	4.9	4	1.09%	10.2	1.0	<0.05

Table 5.2 Geochemical analysis results of EL 29202 –cont.

Element	Lat.	Long.	K	Li	Mg	Mn	Mo	Na	Nb	Ni
Units			ppm	ppm	ppm	ppm	ppm	ppm	ppm	ppm
Detection Limit			100	10	100	2	0.5	100	0.5	2
Sample_No.										
CS-01	208800	7557300	3.56%	<10	2800	576	<0.5	1.48%	6.0	4
CS-02	208850	7557373	3.54%	<10	2700	666	<0.5	1.43%	5.0	4
CS-03	208900	7557373	4.89%	<10	2200	512	<0.5	9800	5.0	4
CS-04	208950	7557348	3.59%	<10	1900	354	<0.5	8500	6.0	6
CS-05	209000	7557348	3.94%	<10	2100	306	<0.5	7800	7.0	6
CS-06	209050	7557348	4.59%	<10	2800	380	<0.5	8200	7.0	12
CS-07	209100	7557348	5.01%	<10	2400	300	<0.5	7900	6.5	4
CS-07 Rock	209110	7557339	4.77%	10	4000	510	<0.5	1.69%	10.0	6
CS-08	209150	7557348	4.19%	<10	2800	298	<0.5	7800	7.0	6
CS-09	209200	7557348	4.08%	<10	2800	246	<0.5	7100	8.0	6

Relinquishment Report on Uranium Exploration of EL 29202

CS-09 Rpt	209210	7557336	4.15%	<10	2800	252	<0.5	7400	8.0	6
CS-10	209250	7557311	4.00%	<10	2900	228	<0.5	7800	7.5	6
CS(01)-01	217294	7563600	4.56%	<10	400	204	<0.5	6800	1.5	<2
CS(01)-02	217294	7563550	4.39%	<10	400	164	<0.5	6600	2.0	<2
CS(01)-03	217269	7563500	4.22%	<10	400	168	1.0	6400	1.5	<2
CS(01)-04	217245	7563450	3.67%	<10	400	186	<0.5	5300	2.0	<2
CS(01)-05	217232	7563400	4.42%	<10	400	144	<0.5	6300	2.0	<2
CS(01)-06	217207	7563350	3.87%	10	400	192	<0.5	6300	3.5	<2
CS(01)-07	217195	7563300	4.07%	20	600	190	1.0	6500	2.0	20
CS(01)-08	217170	7563250	4.01%	<10	600	186	<0.5	7300	3.5	4
CS(01)-09	217158	7563200	4.44%	<10	400	122	<0.5	6400	2.0	<2
CS(01)-10	217160	7563150	4.18%	<10	500	150	<0.5	5600	2.0	<2

Table 5.2 Geochemical analysis results of EL 29202 –cont.

Element	Lat.	Long.	P	Pb	Rb	Re	S	Sb	Sc	Se
Units			ppm	ppm	ppm	ppm	ppm	ppm	ppm	ppm
Detection Limit			50	1	0.2	0.1	50	0.1	1	5
Sample_No.										
CS-01	208800	7557300	450	19	161	<0.1	<50	<0.1	4	<5
CS-02	208850	7557373	350	15	172	<0.1	<50	<0.1	4	<5
CS-03	208900	7557373	350	26	233	<0.1	<50	<0.1	3	<5
CS-04	208950	7557348	350	19	182	<0.1	<50	<0.1	4	<5
CS-05	209000	7557348	350	19	202	<0.1	<50	0.2	4	<5
CS-06	209050	7557348	350	34	238	<0.1	150	1.8	4	<5
CS-07	209100	7557348	350	18	246	<0.1	<50	0.2	4	<5
CS-07 Rock	209110	7557339	500	27	287	<0.1	<50	<0.1	5	<5
CS-08	209150	7557348	350	20	219	<0.1	100	<0.1	5	<5
CS-09	209200	7557348	350	21	219	<0.1	<50	<0.1	5	<5
CS-09 Rpt	209210	7557336	350	22	233	<0.1	<50	<0.1	5	<5
CS-10	209250	7557311	350	17	215	<0.1	100	0.2	5	<5
CS(01)-01	217294	7563600	250	32	288	<0.1	<50	<0.1	<1	<5
CS(01)-02	217294	7563550	250	30	281	<0.1	<50	<0.1	<1	<5
CS(01)-03	217269	7563500	250	28	289	<0.1	<50	<0.1	<1	<5
CS(01)-04	217245	7563450	200	27	251	<0.1	<50	<0.1	<1	<5
CS(01)-05	217232	7563400	250	28	299	<0.1	<50	<0.1	<1	<5
CS(01)-06	217207	7563350	250	27	280	<0.1	<50	<0.1	<1	<5
CS(01)-07	217195	7563300	250	49	290	<0.1	100	3.8	<1	<5
CS(01)-08	217170	7563250	250	28	273	<0.1	<50	0.2	<1	<5
CS(01)-09	217158	7563200	200	30	273	<0.1	<50	<0.1	<1	<5
CS(01)-10	217160	7563150	250	27	262	<0.1	<50	<0.1	<1	<5

Table 5.2 Geochemical analysis results of EL 29202 –cont.

Element	Lat.	Long.	Sn	Sr	Ta	Te	Th	Ti	Tl	U
Units			ppm	ppm	ppm	ppm	ppm	ppm	ppm	ppm

Relinquishment Report on Uranium Exploration of EL 29202

Detection Limit			0.1	0.5	0.1	0.2	0.1	50	0.1	0.1
Sample_No.										
CS-01	208800	7557300	4.1	56.5	0.6	<0.2	51.3	1400	0.9	8.4
CS-02	208850	7557373	3.8	59.5	0.4	<0.2	17.3	1200	0.9	3.2
CS-03	208900	7557373	3.3	61.5	0.4	<0.2	21.2	1050	1.2	3.7
CS-04	208950	7557348	3.2	55.0	0.5	<0.2	24.5	1700	1.0	3.9
CS-05	209000	7557348	3.7	60.5	0.7	<0.2	22.6	1800	1.1	3.8
CS-06	209050	7557348	4.8	60.0	0.6	<0.2	20.7	1450	1.3	3.5
CS-07	209100	7557348	4.2	56.5	0.5	<0.2	18.1	1150	1.3	3.2
CS-07 Rock	209110	7557339	6.2	75.0	0.7	<0.2	29.6	1950	1.7	4.1
CS-08	209150	7557348	4.4	60.0	0.6	<0.2	19.0	1700	1.2	3.3
CS-09	209200	7557348	4.3	56.5	0.7	<0.2	30.9	2000	1.2	5.0
CS-09 Rpt	209210	7557336	4.5	58.5	0.7	<0.2	29.9	2050	1.3	5.0
CS-10	209250	7557311	4.6	53.0	0.7	<0.2	29.1	1950	1.2	5.1
CS(01)-01	217294	7563600	2.2	56.0	0.3	<0.2	4.8	300	1.6	1.6
CS(01)-02	217294	7563550	2.2	54.5	0.3	<0.2	5.1	300	1.7	1.7
CS(01)-03	217269	7563500	2.4	51.0	0.3	<0.2	4.5	300	1.7	1.7
CS(01)-04	217245	7563450	2.4	48.0	0.4	<0.2	4.6	250	1.5	1.8
CS(01)-05	217232	7563400	2.5	49.0	0.4	<0.2	4.8	300	1.7	1.8
CS(01)-06	217207	7563350	3.1	49.0	0.7	<0.2	10.4	600	1.7	2.6
CS(01)-07	217195	7563300	3.8	53.5	0.4	<0.2	5.1	300	1.7	1.9
CS(01)-08	217170	7563250	2.8	51.5	0.6	<0.2	8.8	750	1.6	2.1
CS(01)-09	217158	7563200	2.0	60.0	0.3	<0.2	5.1	400	1.5	1.5
CS(01)-10	217160	7563150	2.6	56.5	0.5	<0.2	7.1	400	1.5	2.0

Table 5.2 Geochemical analysis results of EL 29202 –cont.

Element	Lat.	Long.	V	W	Y	Zn	Zr	La	Ce	Pr
Units			ppm	ppm	ppm	ppm	ppm	ppm	ppm	ppm
Detection Limit			5	0.5	0.1	2	1	0.1	0.1	0.05
Sample_No.										
CS-01	208800	7557300	20	1.0	23.1	10	82	84.4	176	21.7
CS-02	208850	7557373	15	<0.5	13.1	10	44	30.5	61.9	7.10
CS-03	208900	7557373	15	<0.5	16.4	12	45	37.6	74.8	8.90
CS-04	208950	7557348	25	1.0	18.1	14	63	39.9	80.9	9.75
CS-05	209000	7557348	25	1.0	19.0	16	73	39.0	75.0	9.20
CS-06	209050	7557348	20	1.0	12.9	44	67	33.4	67.7	8.05
CS-07	209100	7557348	15	<0.5	11.6	12	62	29.6	60.6	6.95
CS-07 Rock	209110	7557339	25	<0.5	18.8	34	87	54.0	101	12.3
CS-08	209150	7557348	25	1.0	13.4	20	74	31.6	63.9	7.55
CS-09	209200	7557348	25	1.0	18.4	20	89	50.8	98.9	12.6
CS-09 Rpt	209210	7557336	25	1.0	18.8	18	93	50.9	96.1	12.4
CS-10	209250	7557311	25	1.0	18.4	16	102	50.4	97.0	12.1
CS(01)-01	217294	7563600	10	<0.5	5.6	6	30	7.9	14.9	1.90
CS(01)-02	217294	7563550	10	1.0	5.3	6	27	8.1	15.0	1.95

Relinquishment Report on Uranium Exploration of EL 29202

CS(01)-03	217269	7563500	10	1.0	5.0	6	26	7.1	13.1	1.70
CS(01)-04	217245	7563450	10	1.0	5.3	6	25	7.2	13.9	1.85
CS(01)-05	217232	7563400	10	1.0	5.2	4	27	7.6	14.5	1.85
CS(01)-06	217207	7563350	15	1.0	8.1	8	32	17.3	35.3	4.40
CS(01)-07	217195	7563300	10	1.0	5.6	70	29	8.8	15.9	1.95
CS(01)-08	217170	7563250	15	1.0	7.6	10	41	14.4	27.7	3.35
CS(01)-09	217158	7563200	10	1.0	5.8	6	30	8.2	15.5	1.90
CS(01)-10	217160	7563150	15	1.0	6.7	8	29	11.7	22.5	2.75

Table 5.2 Geochemical analysis results of EL 29202 –cont.

Element	Lat.	Long.	Nd	Sm	Eu	Gd	Tb	Dy	Ho	Er
Units			ppm	ppm	ppm	ppm	ppm	ppm	ppm	ppm
Detection Limit			0.05	0.05	0.05	0.2	0.02	0.05	0.02	0.05
Sample_No.										
CS-01	208800	7557300	78.3	15.5	1.40	13.4	1.70	7.30	1.10	2.30
CS-02	208850	7557373	26.5	5.15	0.80	4.4	0.58	3.10	0.52	1.35
CS-03	208900	7557373	32.3	6.45	0.80	5.8	0.74	3.90	0.66	1.75
CS-04	208950	7557348	35.0	6.75	0.80	6.4	0.80	4.05	0.72	1.85
CS-05	209000	7557348	32.6	6.75	0.80	5.6	0.70	3.60	0.58	1.50
CS-06	209050	7557348	28.7	5.65	0.85	4.8	0.64	3.70	0.52	1.35
CS-07	209100	7557348	25.7	4.80	0.80	4.4	0.56	2.80	0.48	1.15
CS-07 Rock	209110	7557339	44.7	8.80	1.30	7.6	0.96	4.75	0.80	1.80
CS-08	209150	7557348	27.1	5.45	0.80	4.6	0.62	3.15	0.56	1.50
CS-09	209200	7557348	45.0	8.55	0.95	7.8	0.98	4.70	0.76	1.95
CS-09 Rpt	209210	7557336	43.7	8.60	0.95	7.8	0.96	4.65	0.76	2.05
CS-10	209250	7557311	43.1	8.55	0.95	7.0	0.92	4.70	0.72	1.85
CS(01)-01	217294	7563600	7.05	1.40	0.45	1.4	0.20	1.20	0.22	0.65
CS(01)-02	217294	7563550	7.05	1.55	0.45	1.4	0.20	1.10	0.20	0.55
CS(01)-03	217269	7563500	6.25	1.40	0.45	1.4	0.20	1.00	0.20	0.50
CS(01)-04	217245	7563450	6.45	1.35	0.40	1.4	0.20	1.10	0.20	0.60
CS(01)-05	217232	7563400	6.80	1.40	0.40	1.4	0.20	1.15	0.20	0.55
CS(01)-06	217207	7563350	15.9	3.40	0.50	3.2	0.40	1.95	0.30	0.80
CS(01)-07	217195	7563300	7.15	1.45	0.45	1.4	0.20	1.20	0.20	0.60
CS(01)-08	217170	7563250	12.5	2.50	0.50	2.2	0.30	1.65	0.28	0.85
CS(01)-09	217158	7563200	7.10	1.50	0.50	1.4	0.20	1.20	0.22	0.60
CS(01)-10	217160	7563150	10.2	2.15	0.45	2.0	0.30	1.45	0.26	0.70

Table 5.2 Geochemical analysis results of EL 29202 –cont.

Element	Lat.	Long.	Tm	Yb	Lu	Au
Units			ppm	ppm	ppm	ppm
Detection Limit			0.05	0.05	0.02	0.01
Sample_No.						
CS-01	208800	7557300	0.35	1.35	0.24	<0.01
CS-02	208850	7557373	0.20	1.05	0.16	<0.01
CS-03	208900	7557373	0.25	1.35	0.24	<0.01

Relinquishment Report on Uranium Exploration of EL 29202

CS-04	208950	7557348	0.30	1.55	0.22	<0.01
CS-05	209000	7557348	0.20	1.15	0.18	<0.01
CS-06	209050	7557348	0.20	1.00	0.18	<0.01
CS-07	209100	7557348	0.15	0.95	0.14	<0.01
CS-07 Rock	209110	7557339	0.25	1.20	0.18	<0.01
CS-08	209150	7557348	0.20	1.45	0.18	<0.01
CS-09	209200	7557348	0.30	1.45	0.22	<0.01
CS-09 Rpt	209210	7557336	0.25	1.55	0.22	<0.01
CS-10	209250	7557311	0.25	1.55	0.22	<0.01
CS(01)-01	217294	7563600	0.10	0.60	0.10	<0.01
CS(01)-02	217294	7563550	0.10	0.50	0.08	<0.01
CS(01)-03	217269	7563500	0.10	0.50	0.08	0.01
CS(01)-04	217245	7563450	0.10	0.50	0.08	<0.01
CS(01)-05	217232	7563400	0.10	0.55	0.08	0.01
CS(01)-06	217207	7563350	0.10	0.65	0.10	0.01
CS(01)-07	217195	7563300	0.10	0.60	0.10	<0.01
CS(01)-08	217170	7563250	0.10	0.75	0.12	<0.01
CS(01)-09	217158	7563200	0.10	0.55	0.10	<0.01
CS(01)-10	217160	7563150	0.10	0.60	0.10	<0.01

Table 5.3 Best results from two sampling traverses.

Traverse	Sample No	Au_ppm	Cu_ppm	Th_ppm	Pb_ppm	Zn_ppm	U_ppm
CS	01-10	<0.01	78	51.3	34	44	8.4
	01						
	06						
	09						
	10						
CS (01)	01	0.01	176	8.8	49	70	2.6
	02						
	05						
	06						
	07						
	08						
	09						

The best results from two sampling traverses are summarized in Table 5.3. The results (Table 5.3) indicate that no analysed samples return significant results. Therefore, vacuum or RAB drilling is required to test beneath cover.

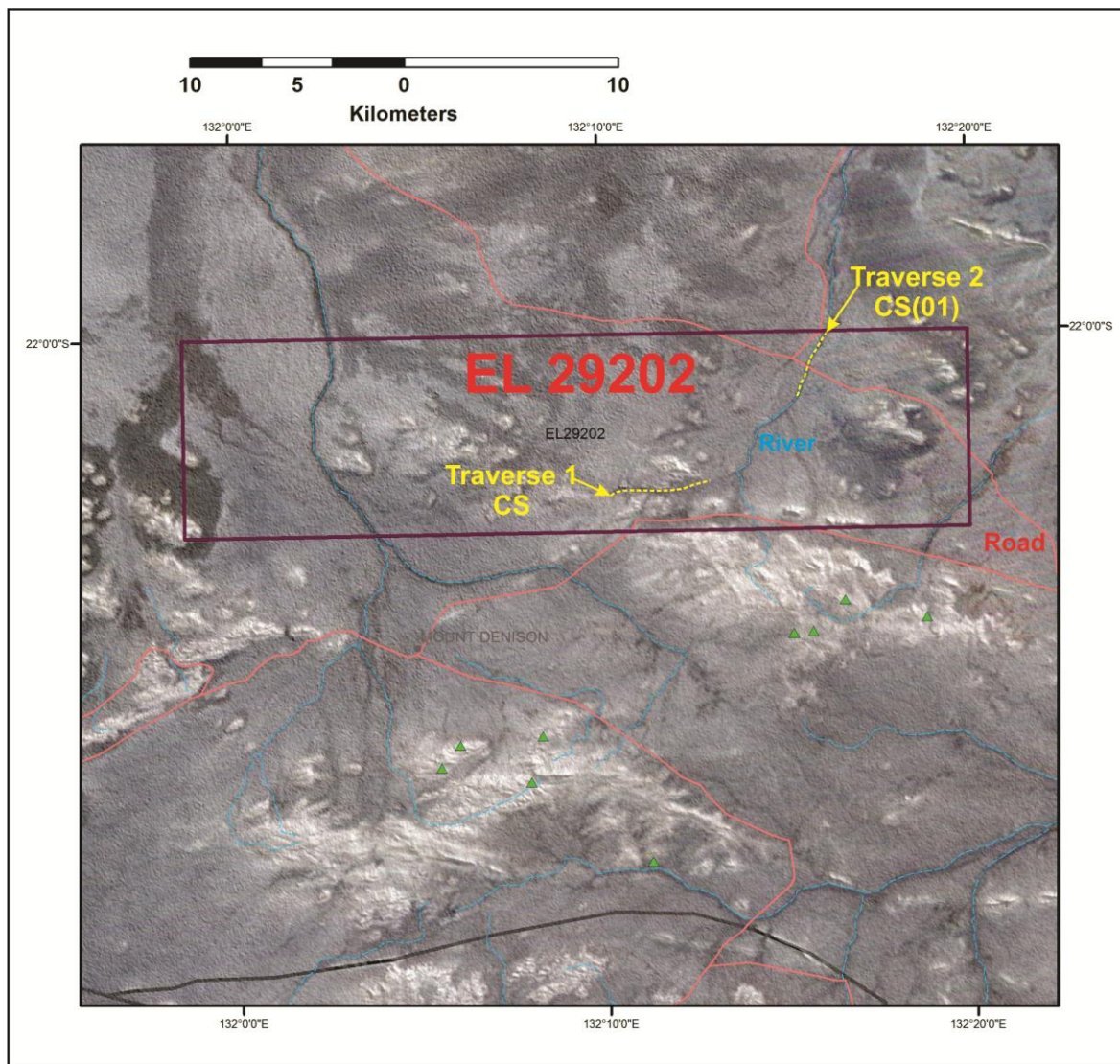


Figure 5.12 The sample locations within EL 29202 (yellow). Traverse 1 – CS are sampled in 50 m interval from the west (CS 01) to the east (CS 10). Traverse 2 – CS(01) are sampled in 50 m interval from the northeast [CS(01) 01] to the southwest [(CS(01) 10)].

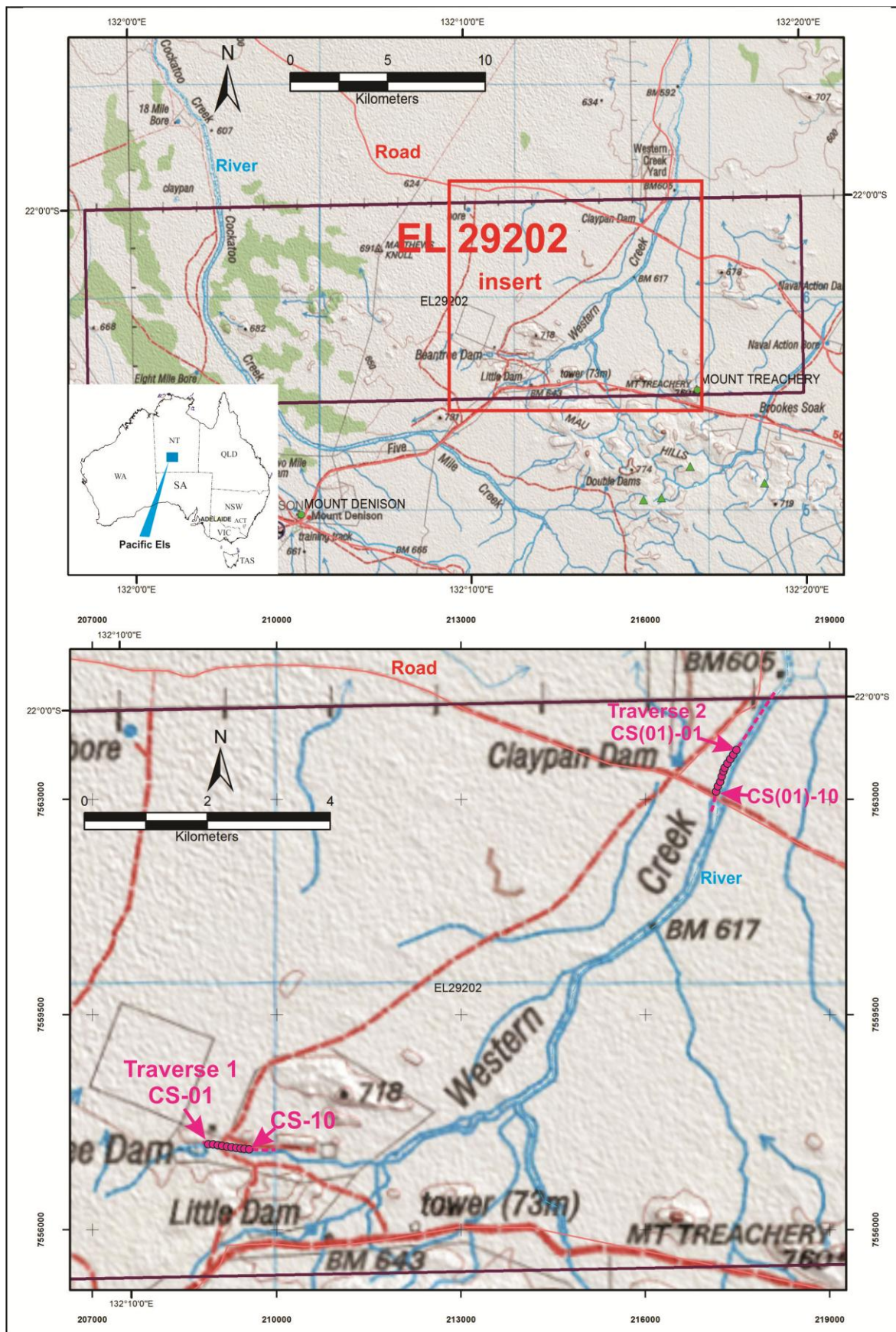


Figure 5.13 The sample location plan within EL 29202 (pink). Traverse 1 – CS are sampled from the west (CS 01) to the east (CS 10). Traverse 2 – CS(01) are sampled from the northeast [CS(01) 01] to the southwest (CS(01) 10).

5.4 Uranium Prospectivity

The tenements are located within the general region of uranium prospectivity (Lally and Bajwah, 2006) and of relevance are occurrences in the area of sandstone-hosted, surficial and the metasomatite and vein uranium mineralisation styles. EL 29202 is located in the uranium potential zones of the Ngalia Basin and Amadeus Basin areas shown in Figure 4.1.

The style of mineralisation within the Arunta Block gneisses and metamorphic sequences is represented by pegmatite/vein style mineralisation (Sn-Ta-W) and the Nolans Bore metasomatite flour-apatite style mineralisation (REE-P-U).

EL 29202 is located to the north and northeast of the Ngalia Basin. It is therefore considered prospective for palaeovalley sandstone-hosted and calcrete style uranium mineralisation, similar to those found within the Palaeozoic continental clastic successions of the Kerridy Sandstone Formation and Mount Eclipse Formation.

Surficial style mineralisation related to, palaeovalley, playa, or terrace deposits may be developed in areas where significant calcrete and terrace deposits are preserved, associated with the drainage system and possible palaeo-playa lakes.

The main lithologies outcropping in the project are granites and sediments of Palaeozoic age, with Canozoic sediments in places. Zones of greater sediment accumulation identified may act as potential trapsites for palaeovalley-related sediment hosted uranium mineralization. They may reflect the palaeovalley architecture or may represent a similar scenario to the Beverley Prospect in the Frome Basin in South Australia. Further investigation is required during the drilling phase of the exploration program.

6. CONCLUSIONS AND RECOMMENDATIONS

The combination of DEM, AEM, and night-time thermal remotely-sensed imagery in GIS mode represent by far the best method for palaeovalley-related uranium exploration in the region. Ground magnetic and gravity, shallow seismic, TEM, and test drilling, where necessary, are also important media that can be used in subsurface structure delineation. Microgravity surveying techniques can also be applied to look for uranium-bearing palaeochannels in the project areas; gravitational techniques should work quite well, given the density contrast of the basement/bedrock and the channel sand. The AEM has proven to be a good guide to conductive variations in the subsurface and is one of the best techniques for detecting buried conductive anomalies.

The exploration work done to date has not successfully explored EL 29202 for the presence of palaeovalley mineralisation. What limited work that has been done has proved that the transported soils effectively are geochemically blanketing the underlying rocks.

The only effective way to examine the underlying strata is by drilling, firstly using either Aircore (recommended) or Reverse Circulation methods. Wuhua does not have the funds to carry out drilling currently. It has given priority in the Napperby Uranium Exploration Project to EL 29202.

It is recommended that the exploration program in the next step should be designed to test the tenements for the uranium targets described above. In summary, the following conclusions can be made regarding the geophysical and geological methods for locating potential mineralisation sites:

- Further investigations should be directed in regions identified with thermal responses and which drain directly from granites with high uranium radiometric response. An airborne electromagnetic survey (AEM) is recommended second as results may define smaller target areas and aid in orientating traverse lines correctly.
- If necessary, carries out ground gravity traverses over the magnetic anomalies with the generation of geology maps.
- Compiles a detailed structural map and analysis of all priority magnetic and radiometric anomalies to determine the controls and disposition of any uranium mineralisation potential.
- Look for signs of channels and intrusives at depth or zones of high physical contrasts along shear zones and or contacts that might mark high redox potential.
- To determine survey line orientation, lithology strike and dip needs to be determined for the palaeovalley and underlying basement.
- *Test drilling* should traverse across or along the interpreted signatures, and particularly high priority zones selected. When these predictions prove wrong, the information should be used to revise and update the 3D models.
- Conduct a small RAB/RC/diamond drill program targeted at down dip and down plunge extensions to the any mineralisation intersected and to test the source of the uranium conductors located by geophysical survey.
- RC drilling. The cost of drilling possibly 10-100m deep holes to reach the basement means a palaeovalley-related (sandstone and surficial-style) uranium deposit would need to be found.

- Sample water from aquifers intercepted by station bores to map U distribution.
- Any trace of valuable minerals within the basinal sediments or bedrocks (e.g., gold, uranium) is of interest as a guide to the location of basement mineralisation

Due to financial reasons, there was no actual work carried out during last reporting period.

The area of EL29202 has had no further work carried out, as in house studies and field examinations indicated low prospectivity .

7. EXPENDITURE COVENANTS

7.1 Expenditure Report for Year (2015– 2016)

The expenditure report for Year 1 (2015– 2016) is included as Appendix 3 to this annual report.

KEY REFERENCES

- Butt, C R M, Mann, A W and Horwitz, R C, 1984. Regional Setting Distribution and Genesis of Surficial Uranium Deposits in Calcretes and Associated Sediments in Australia. In: Surficial Uranium Deposits. International Atomic Energy Agency, Vienna; Tecdoc 322: 121–12.
- Dahlkamp F.J. 1993. Uranium Ore Deposits. Springer-Verlag. Berlin Heidelberg.
- Dickson, B L and Scott, K M, 1997. Interpretation of Aerial Gamma-ray Surveys – Adding the Geochemical Factors. AGSO Journal of Australian Geology and Geophysics 17:187–200.
- Hou, B. and Mauger, A.J., 2005. How well does remote sensing aid palaeochannel interpretation? An example from the Harris Greenstone Belt. MESA Jnl 38: 46 – 52.
- Lally J H and Bajwah, Z U, 2006. Uranium Deposits of the Northern Territory. Northern Territory Geological Survey Report 20, Northern Territory Government, Darwin.
- McKay, A. and Miezeitis, Y., 2001. Australia's uranium: resources, geology and development of deposits. Geoscience Australia. Mineral Resource Report,1.
- Shaw, R D, Stewart, A J and Black, L P, 1984. The Arunta Inlier: a Complex Ensialic Mobile Belt in Central Australia. Part 2. Tectonic history. Aust. J. Earth Sci., 31: 457-484.
- Stewart, A.J., Shaw, R.D. and Black, L.P., 1984. The Arunta Inlier: A Complex Ensialic Mobile Belt in Central Australia. Part 1. Stratigraphy, correlations and origin. Aust. J. Earth Sci., 31: 445-455.
- Spark, R F, 1975. Uranium Exploration Joint Venture: Annual Report of Activities, 1974. Northern Territory GEOLOGICAL SURVEY, open file Company report CR1975-0029.
- Uken, R. and Luong, L., 2013. Pacific Exploration Preliminary Uranium Review, NT Uranium Licence Preliminary Technical Review. Coffey Mining Pty Ltd.
- Young D N, Edgoose, C J, Blake, D H and Shaw, R D, 1995. Mount Doreen, Northern Territory. 1:250 000 Geological Map Series and Explanatory Notes, SF52-12. Northern Territory Geological Survey, Darwin and Australian Geological Survey Organisation, Canberra.

Appendix 1



Processing of ASTER Night Time Thermal Infrared Imagery ELs 29202, 29205 and 29221, near Crown Hill, Northern Territory

Job No.	16779
Client	Wuhua Mining Corporation Pty Ltd
Area of interest	ELs 29202, 29205 and 29221, near Crown Hill, Northern Territory
Data Type	ASTER Night Time Thermal Infrared
Datum	WGS84
Projection	SUTM53

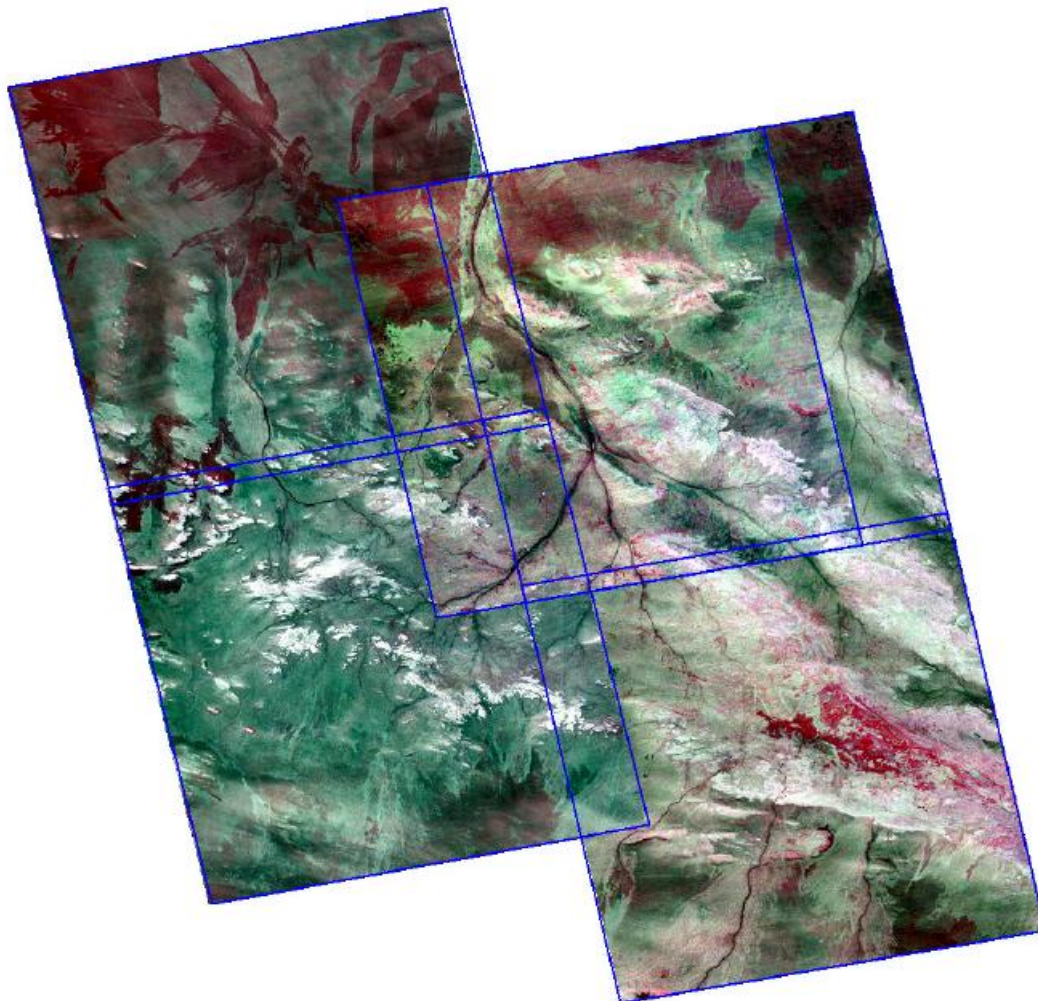
Raw Data:

- Five night time ASTER scenes acquired 27 March 2005 (2 scenes), 30 October 2005 (1 scene) and 13 March 2014 (2 scenes)
- 90m resolution Level 1B 5-band TIR

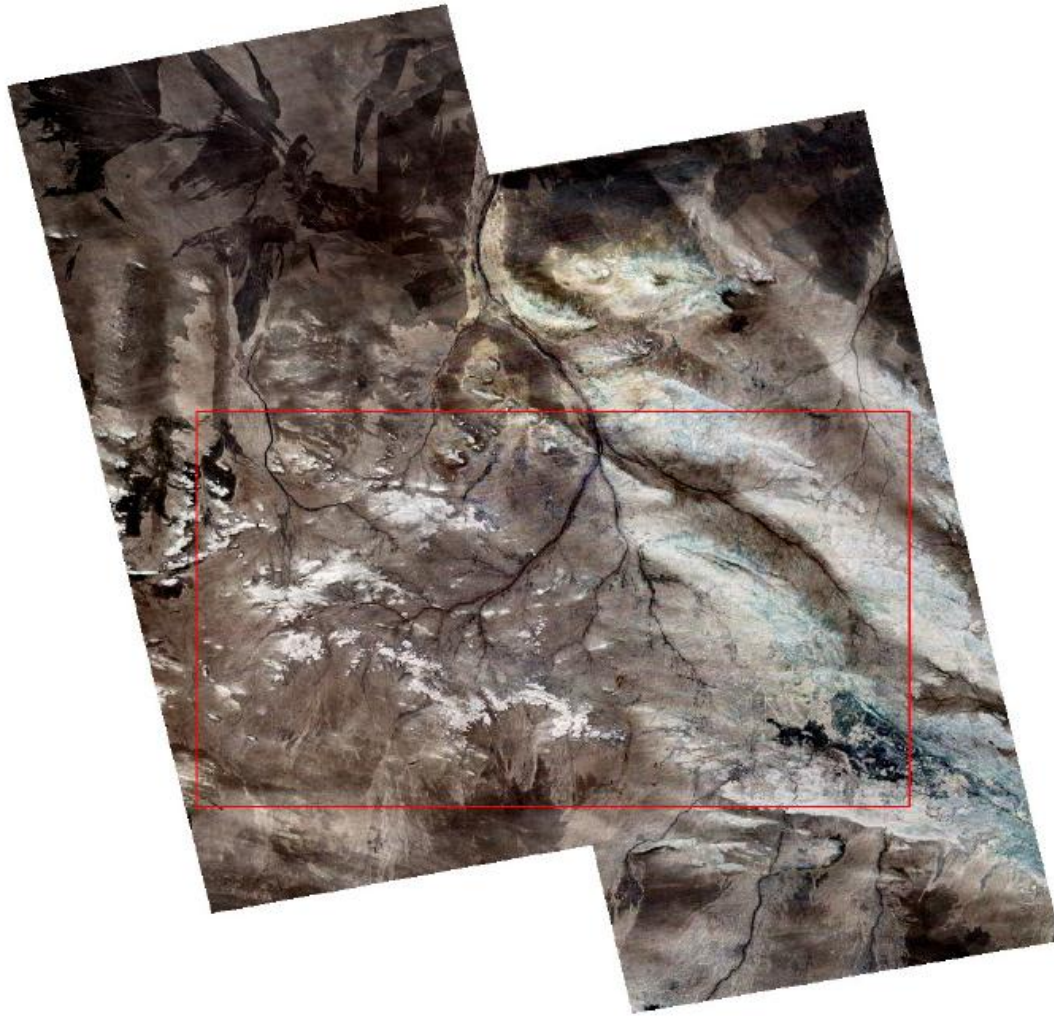
Processing:

- The Level 1B data was imported into ER Mapper using in-house code and rotated to north during the import,
 - Same date scenes were mosaicked using ER Mapper,
 - Same-date scenes/swathes were shifted in location to match the Geoimage Landsat 7 base and re-sampled to 45m resolution using ER Mapper,
 - A cloud mask was applied to the 13 March 2014 swathe prior to mosaicking ,
 - The three swathes were mosaicked using PCI Geomatica,
 - Contrast enhanced, Arc-compatible GeoTIFF format enhancements of the mosaic prepared in ER Mapper. Contrast stretch for the enhancements was applied to the bounding rectangle surrounding the ELs and then applied to the full mosaic.
- TIR bands 12, 11, 10 (TIR321) in RGB
 - TIR bands 13, 12, 11 (TIR432) in RGB

- TIR bands 14, 12, 10 (TIR531) in RGB
- TIR bands 14, 13, 12 (TIR543) in RGB



*ASTER scenes processed - scenes outlined in blue
Acquired from west to east – 27 March 2005, 30 October 2005 and 13 March 2014
Bands 14, 12, 10 in RGB*



*Final mosaic showing bounding rectangle used for contrast stretching outlined in red
Bands 12, 11, 10 in RGB*

Products Supplied:

/GeoTIFF

- Un-enhanced Unsigned16BitInteger 45m resolution Arc-compatible multi-band GeoTIFF format TIR (*EL29202etc_ASTER_NightTime_TIR_SUTM53.tif*)

/Enhancements

- Arc-compatible GeoTIFF format enhancements (*EL29202etc_ASTER_NightTime_TIR321.tif etc.*)

/Metadata

- *16779_Readme.pdf* – This document
- *Metadata for this capture (metadata.txt)*

- *Japan Space Systems EULA*

Imagery Details:

ASTER Night Time TIR Mosaic:

Top Left Coordinate = 153174.36mE, 7627041.42mN

Cell Size = 45.00m

Number of Lines = 3302

Number of Pixels = 3543

Projection = SUTM53

Datum = WGS84

Appendix 2

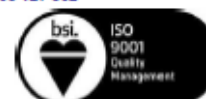


Bureau Veritas Minerals Pty Ltd
MINERAL TESTING & LABORATORY SERVICES

ABN: 30 008 127 802

35-37 Stirling Street
Thebarton SA 5031

Telephone (08) 8416 5200
Facsimile (08) 8234 0355



Reference: **aa014633**
Date Finished: 12/08/2015
Order: TBA
Project:
Date Received: 20/07/2015
Type of Sample: Rock Chips
Samples Analysed: 21

FINAL ANALYSIS REPORT

Analysis of Mineral Samples
for
Wuhua Mining Corporation Pty Ltd
146 Clarendon Drive KEYSBOROUGH VIC 3173

Attention: Junjie Lu

Authorised By:

A handwritten signature in black ink, appearing to be 'BD'.

Brett Day
ICP Manager

A handwritten signature in black ink, appearing to be 'C Abbott'.

Christopher Abbott
Chemist

NATA Accreditation No. 1526

Relinquishment Report on Uranium Exploration of EL 29202



BUREAU Bureau Veritas Minerals Pty Ltd
VERITAS MINERAL TESTING & LABORATORY SERVICES

ABN: 30 008 127 802
35-37 Stirling Street Telephone (08) 8416 5200
Thebarton SA 5031 Facsimile (08) 8234 0355

Reference: 22014633 Order Number: TBA Page 1 of 9

Method	MA102	MA101	MA102	MA102	MA102	MA102	MA101	MA102
Result Name	Ag	Al	As	Ba	Be	Bi	Ca	Cd
Units	ppm	ppm	ppm	ppm	ppm	ppm	ppm	ppm
Detection Limit	0.2	100	1	0.5	0.5	0.1	100	0.5
BLANK 1	<0.2	<100	<1	<0.5	<0.5	<0.1	<100	<0.5
29202-CS-01	<0.2	5.73%	<1	684	1.5	<0.1	2700	<0.5
29202-CS-02	<0.2	5.63%	3	683	1.5	<0.1	2900	<0.5
29202-CS-03	<0.2	5.78%	2	880	1.0	<0.1	2100	<0.5
29202-CS-04	<0.2	5.27%	3	655	1.5	0.2	1900	<0.5
Std Nominal	0.4	6.16%	749	142			2.79%	
Determined	0.4	6.35%	752	152	2.0	0.7	2.75%	<0.5
29202-CS-05	<0.2	5.37%	3	745	1.5	0.2	1900	<0.5
29202-CS-06	<0.2	5.67%	2	838	1.5	<0.1	2800	<0.5
29202-CS-07	<0.2	5.78%	3	913	1.0	<0.1	1300	<0.5
Std Nominal	6.0	6.83%	96	132		3.5	2.48%	8.0
Determined	6.0	6.92%	100	138	1.5	3.3	2.47%	8.0
29202-CS-07 Rock	<0.2	7.12%	2	884	2.5	<0.1	7600	<0.5
29202-CS-08	<0.2	5.58%	2	729	2.0	<0.1	2400	<0.5
29202-CS-09	<0.2	5.59%	2	708	1.5	<0.1	1900	<0.5
29202-CS-09 Rpt	<0.2	5.67%	3	735	2.0	0.2	1900	<0.5
29202-CS-10	<0.2	5.58%	<1	705	1.5	0.2	1700	<0.5
29202-CS(01)-01	<0.2	4.80%	<1	555	5.0	0.4	1200	<0.5
Std Nominal		4.63%	3	983	1.5	<0.1	600	<0.5
Determined	<0.2	4.75%	5	962	2.0	<0.1	600	<0.5
29202-CS(01)-02	<0.2	4.70%	2	528	4.5	0.4	1100	<0.5
Std Nominal	1.8	7.90%	21	922	3.0	4.3	3.00%	1.0
Determined	2.0	7.46%	20	884	3.0	4.5	3.02%	<0.5
29202-CS(01)-03	<0.2	4.49%	2	506	5.5	0.5	1200	<0.5
29202-CS(01)-04	<0.2	3.88%	2	427	7.5	0.6	900	<0.5
29202-CS(01)-05	<0.2	4.58%	<1	507	7.0	0.5	900	<0.5
Std Nominal	0.8	7.68%	18	1010	3.0	1.5	2.71%	<0.5
Determined	0.8	7.64%	19	992	4.0	1.8	2.76%	<0.5
29202-CS(01)-06	<0.2	4.29%	<1	435	8.0	22.1	1500	<0.5
29202-CS(01)-07	<0.2	4.37%	3	475	6.0	0.5	3400	<0.5
29202-CS(01)-08	<0.2	4.78%	2	529	7.5	0.8	1200	<0.5
29202-CS(01)-09	<0.2	4.78%	2	561	3.5	0.4	1300	<0.5
29202-CS(01)-10	<0.2	4.51%	<1	478	3.0	0.4	2100	<0.5

Relinquishment Report on Uranium Exploration of EL 29202



BUREAU Bureau Veritas Minerals Pty Ltd
VERITAS MINERAL TESTING & LABORATORY SERVICES

ABN: 30 008 127 802
35-37 Stirling Street Telephone (08) 8416 5200
Thebarton SA 5031 Facsimile (08) 8234 0355

Reference: aa014633 Order Number: TBA Page 2 of 9

Method	MA102	MA101	MA102	MA101	MA101	MA102	MA102	MA102
Result Name	Co	Cr	Cs	Cu	Fe	Ga	Hf	In
Units	ppm	ppm	ppm	ppm	ppm	ppm	ppm	ppm
Detection Limit	1	10	0.1	2	100	0.2	0.2	0.05
BLANK 1	<1	<10	<0.1	<2	<100	<0.2	<0.2	<0.05
29202-CS-01	2	<10	1.5	6	1.38%	13.0	2.4	<0.05
29202-CS-02	2	<10	1.6	4	1.37%	13.0	1.2	<0.05
29202-CS-03	3	<10	1.6	6	1.47%	11.8	1.2	<0.05
29202-CS-04	3	10	2.0	8	1.62%	12.2	2.0	<0.05
Std Nominal	160	2060		120	9.79%			
Determined	155	1900	2.4	120	9.35%	14.0	1.2	0.10
29202-CS-05	3	10	2.0	12	1.67%	12.2	2.2	<0.05
29202-CS-06	3	10	1.9	78	1.95%	13.2	2.0	<0.05
29202-CS-07	3	<10	1.7	6	1.63%	13.2	2.0	<0.05
Std Nominal	43	220		1520	8.65%			
Determined	44	210	17.3	1520	8.50%	21.2	2.6	0.60
29202-CS-07 Rock	4	<10	2.3	4	2.13%	19.0	2.6	<0.05
29202-CS-08	4	10	2.3	10	1.98%	13.2	2.2	<0.05
29202-CS-09	3	10	2.5	8	1.87%	13.2	2.8	<0.05
29202-CS-09 Rpt	4	10	2.5	10	1.87%	13.6	2.8	<0.05
29202-CS-10	3	10	2.3	8	1.89%	13.6	2.8	<0.05
29202-CS(01)-01	<1	<10	6.3	8	9700	9.6	1.0	<0.05
Std Nominal	4	30	0.7	2	1.57%	11.0	1.6	<0.05
Determined	4	30	0.7	6	1.67%	11.8	1.4	<0.05
29202-CS(01)-02	<1	<10	6.1	<2	9300	9.8	0.8	<0.05
Std Nominal	16	90	9.6	7550	5.80%	23.0	2.2	0.60
Determined	17	90	9.6	7630	5.69%	19.2	2.2	0.60
29202-CS(01)-03	<1	<10	6.5	6	8200	9.4	0.8	<0.05
29202-CS(01)-04	<1	<10	5.5	<2	9100	8.8	0.8	<0.05
29202-CS(01)-05	<1	<10	6.7	4	8300	9.6	1.0	<0.05
Std Nominal	16	90	12.2	2600	4.54%	19.6	2.6	0.20
Determined	16	90	12.2	2580	4.65%	21.4	2.6	0.20
29202-CS(01)-06	1	<10	6.3	6	9300	9.8	1.0	<0.05
29202-CS(01)-07	1	70	6.7	176	1.32%	9.4	1.0	<0.05
29202-CS(01)-08	1	<10	6.8	4	1.20%	10.2	1.2	<0.05
29202-CS(01)-09	<1	<10	5.1	4	8500	9.6	1.2	<0.05
29202-CS(01)-10	1	<10	4.9	4	1.09%	10.2	1.0	<0.05

Relinquishment Report on Uranium Exploration of EL 29202



BUREAU Bureau Veritas Minerals Pty Ltd
VERITAS MINERAL TESTING & LABORATORY SERVICES

ABN: 30 008 127 802
35-37 Stirling Street Telephone (08) 8416 5200
Thebarton SA 5031 Facsimile (08) 8234 0355

Reference: 22014633 Order Number: TBA Page 3 of 9

Method	MA101	MA101	MA101	MA101	MA102	MA101	MA102	MA101
Result Name	K	Li	Mg	Mn	Mo	Na	Nb	Ni
Units	ppm	ppm	ppm	ppm	ppm	ppm	ppm	ppm
Detection Limit	100	10	100	2	0.5	100	0.5	2
BLANK 1	<100	<10	<100	<2	<0.5	<100	<0.5	<2
29202-CS-01	3.56%	<10	2800	576	<0.5	1.48%	6.0	4
29202-CS-02	3.54%	<10	2700	666	<0.5	1.43%	5.0	4
29202-CS-03	4.89%	<10	2200	512	<0.5	9800	5.0	4
29202-CS-04	3.59%	<10	1900	354	<0.5	8500	6.0	6
Std Nominal	5600		6.85%	2380		6300		1180
Determined	5500	10	6.90%	2320	1.5	6200	2.0	1260
29202-CS-05	3.94%	<10	2100	306	<0.5	7800	7.0	6
29202-CS-06	4.59%	<10	2800	380	<0.5	8200	7.0	12
29202-CS-07	5.01%	<10	2400	300	<0.5	7900	6.5	4
Std Nominal	2.35%		1.77%	1180	54.0	1.30%		74
Determined	2.40%	10	1.71%	1190	58.0	1.30%	4.5	78
29202-CS-07 Rock	4.77%	10	4000	510	<0.5	1.69%	10.0	6
29202-CS-08	4.19%	<10	2800	298	<0.5	7800	7.0	6
29202-CS-09	4.08%	<10	2800	246	<0.5	7100	8.0	6
29202-CS-09 Rpt	4.15%	<10	2800	252	<0.5	7400	8.0	6
29202-CS-10	4.00%	<10	2900	228	<0.5	7800	7.5	6
29202-CS(01)-01	4.56%	<10	400	204	<0.5	6800	1.5	<2
Std Nominal	2.59%	<10	2300	780	7.0	2300	7.5	8
Determined	2.65%	<10	2400	780	6.5	2400	8.0	10
29202-CS(01)-02	4.39%	<10	400	164	<0.5	6600	2.0	<2
Std Nominal	3.10%	30	1.70%	600	274		16.0	50
Determined	3.08%	30	1.62%	590	264	2.10%	15.5	42
29202-CS(01)-03	4.22%	<10	400	168	1.0	6400	1.5	<2
29202-CS(01)-04	3.67%	<10	400	186	<0.5	5300	2.0	<2
29202-CS(01)-05	4.42%	<10	400	144	<0.5	6300	2.0	<2
Std Nominal	3.14%	30	1.48%	546	99.0	2.08%	18.0	42
Determined	3.10%	40	1.52%	564	103	2.01%	18.5	44
29202-CS(01)-06	3.87%	10	400	192	<0.5	6300	3.5	<2
29202-CS(01)-07	4.07%	20	600	190	1.0	6500	2.0	20
29202-CS(01)-08	4.01%	<10	600	186	<0.5	7300	3.5	4
29202-CS(01)-09	4.44%	<10	400	122	<0.5	6400	2.0	<2
29202-CS(01)-10	4.18%	<10	500	150	<0.5	5600	2.0	<2

Relinquishment Report on Uranium Exploration of EL 29202



BUREAU Bureau Veritas Minerals Pty Ltd
VERITAS MINERAL TESTING & LABORATORY SERVICES

ABN: 30 008 127 802
35-37 Stirling Street Telephone (08) 8416 5200
Thebarton SA 5031 Facsimile (08) 8234 0355

Reference: aa014633 Order Number: TBA Page 4 of 9

Method	MA101	MA102	MA102	MA102	MA101	MA102	MA101	MA102
Result Name	P	Pb	Rb	Re	S	Sb	Sc	Se
Units	ppm	ppm	ppm	ppm	ppm	ppm	ppm	ppm
Detection Limit	50	1	0.2	0.1	50	0.1	1	5
BLANK 1	<50	<1	<0.2	<0.1	<50	<0.1	<1	<5
29202-CS-01	450	19	161	<0.1	<50	<0.1	4	<5
29202-CS-02	350	15	172	<0.1	<50	<0.1	4	<5
29202-CS-03	350	26	233	<0.1	<50	<0.1	3	<5
29202-CS-04	350	19	182	<0.1	<50	<0.1	4	<5
Std Nominal	100	39			600		33	
Determined	100	39	25.2	<0.1	500	4.0	32	<5
29202-CS-05	350	19	202	<0.1	<50	0.2	4	<5
29202-CS-06	350	34	238	<0.1	150	1.8	4	<5
29202-CS-07	350	18	246	<0.1	<50	0.2	4	<5
Std Nominal	600	521			2.01%	12.0	15	
Determined	600	518	530	<0.1	1.97%	12.0	15	5
29202-CS-07 Rock	500	27	287	<0.1	<50	<0.1	5	<5
29202-CS-08	350	20	219	<0.1	100	<0.1	5	<5
29202-CS-09	350	21	219	<0.1	<50	<0.1	5	<5
29202-CS-09 Rpt	350	22	233	<0.1	<50	<0.1	5	<5
29202-CS-10	350	17	215	<0.1	100	0.2	5	<5
29202-CS(01)-01	250	32	288	<0.1	<50	<0.1	<1	<5
Std Nominal	100	18	88.0	<0.1	<50	<0.1	3	<5
Determined	100	18	81.8	<0.1	<50	<0.1	3	<5
29202-CS(01)-02	250	30	281	<0.1	<50	<0.1	<1	<5
Std Nominal	1000	29	145		9250	0.9	14	5
Determined	1000	28	153	<0.1	9350	1.0	14	10
29202-CS(01)-03	250	28	289	<0.1	<50	<0.1	<1	<5
29202-CS(01)-04	200	27	251	<0.1	<50	<0.1	<1	<5
29202-CS(01)-05	250	28	299	<0.1	<50	<0.1	<1	<5
Std Nominal	1000	23	184	<0.1	3550	0.9	13	<5
Determined	1000	24	186	<0.1	3600	0.9	14	<5
29202-CS(01)-06	250	27	280	<0.1	<50	<0.1	<1	<5
29202-CS(01)-07	250	49	290	<0.1	100	3.8	<1	<5
29202-CS(01)-08	250	28	273	<0.1	<50	0.2	<1	<5
29202-CS(01)-09	200	30	273	<0.1	<50	<0.1	<1	<5
29202-CS(01)-10	250	27	262	<0.1	<50	<0.1	<1	<5

Relinquishment Report on Uranium Exploration of EL 29202



BUREAU Bureau Veritas Minerals Pty Ltd
VERITAS MINERAL TESTING & LABORATORY SERVICES

ABN: 30 008 127 802
35-37 Stirling Street Telephone (08) 8416 5200
Thebarton SA 5031 Facsimile (08) 8234 0355

Reference: aa014633 Order Number: TBA Page 5 of 9

Method	MA102	MA102	MA102	MA102	MA102	MA101	MA102	MA102
Result Name	Sn	Sr	Ta	Te	Th	Ti	TI	U
Units	ppm	ppm	ppm	ppm	ppm	ppm	ppm	ppm
Detection Limit	0.1	0.5	0.1	0.2	0.1	50	0.1	0.1
BLANK 1	0.2	<0.5	<0.1	<0.2	<0.1	<50	<0.1	<0.1
29202-CS-01	4.1	56.5	0.6	<0.2	51.3	1400	0.9	8.4
29202-CS-02	3.8	59.5	0.4	<0.2	17.3	1200	0.9	3.2
29202-CS-03	3.3	61.5	0.4	<0.2	21.2	1050	1.2	3.7
29202-CS-04	3.2	55.0	0.5	<0.2	24.5	1700	1.0	3.9
Std Nominal	1.0	42.0				3400		
Determined	1.5	45.0	<0.1	0.2	1.9	3250	0.6	2.1
29202-CS-05	3.7	60.5	0.7	<0.2	22.6	1800	1.1	3.8
29202-CS-06	4.8	60.0	0.6	<0.2	20.7	1450	1.3	3.5
29202-CS-07	4.2	56.5	0.5	<0.2	18.1	1150	1.3	3.2
Std Nominal		104				5100		
Determined	3.0	104	0.5	<0.2	3.1	4950	7.3	0.9
29202-CS-07 Rock	6.2	75.0	0.7	<0.2	29.6	1950	1.7	4.1
29202-CS-08	4.4	60.0	0.6	<0.2	19.0	1700	1.2	3.3
29202-CS-09	4.3	56.5	0.7	<0.2	30.9	2000	1.2	5.0
29202-CS-09 Rpt	4.5	58.5	0.7	<0.2	29.9	2050	1.3	5.0
29202-CS-10	4.6	53.0	0.7	<0.2	29.1	1950	1.2	5.1
29202-CS(01)-01	2.2	56.0	0.3	<0.2	4.8	300	1.6	1.6
Std Nominal	0.7	124	0.6	<0.2	5.6	2400	0.4	39.6
Determined	0.7	123	0.5	<0.2	5.6	2450	0.5	39.6
29202-CS(01)-02	2.2	54.5	0.3	<0.2	5.1	300	1.7	1.7
Std Nominal	11.0	364	0.9		14.0	4700	0.8	3.8
Determined	10.6	361	1.4	0.2	14.3	4750	0.9	4.1
29202-CS(01)-03	2.4	51.0	0.3	<0.2	4.5	300	1.7	1.7
29202-CS(01)-04	2.4	48.0	0.4	<0.2	4.6	250	1.5	1.8
29202-CS(01)-05	2.5	49.0	0.4	<0.2	4.8	300	1.7	1.8
Std Nominal	5.6	338	1.4	<0.2	18.0	4650	0.9	4.9
Determined	5.8	344	1.5	<0.2	17.6	4900	1.1	5.2
29202-CS(01)-06	3.1	49.0	0.7	<0.2	10.4	600	1.7	2.6
29202-CS(01)-07	3.8	53.5	0.4	<0.2	5.1	300	1.7	1.9
29202-CS(01)-08	2.8	51.5	0.6	<0.2	8.8	750	1.6	2.1
29202-CS(01)-09	2.0	60.0	0.3	<0.2	5.1	400	1.5	1.5
29202-CS(01)-10	2.6	56.5	0.5	<0.2	7.1	400	1.5	2.0

Relinquishment Report on Uranium Exploration of EL 29202



BUREAU Bureau Veritas Minerals Pty Ltd
VERITAS MINERAL TESTING & LABORATORY SERVICES

ABN: 30 008 127 802
35-37 Stirling Street Telephone (08) 8416 5200
Thebarton SA 5031 Facsimile (08) 8234 0355

Reference: 22014633 Order Number: TBA Page 6 of 9

Method	MA101	MA102	MA102	MA101	MA102	MA102	MA102	MA102
Result Name	V	W	Y	Zn	Zr	La	Ce	Pr
Units	ppm	ppm	ppm	ppm	ppm	ppm	ppm	ppm
Detection Limit	5	0.5	0.1	2	1	0.1	0.1	0.05
BLANK 1	<5	<0.5	<0.1	<2	<1	<0.1	<0.1	<0.05
29202-CS-01	20	1.0	23.1	10	82	84.4	176	21.7
29202-CS-02	15	<0.5	13.1	10	44	30.5	61.9	7.10
29202-CS-03	15	<0.5	16.4	12	45	37.6	74.8	8.90
29202-CS-04	25	1.0	18.1	14	63	39.9	80.9	9.75
Std Nominal	200		26.0	266				
Determined	195	22.0	26.6	274	44	15.3	43.3	5.75
29202-CS-05	25	1.0	19.0	16	73	39.0	75.0	9.20
29202-CS-06	20	1.0	12.9	44	67	33.4	67.7	8.05
29202-CS-07	15	<0.5	11.6	12	62	29.6	60.6	6.95
Std Nominal	115		16.0	5190				
Determined	115	2.5	16.8	5440	94	11.1	22.8	2.95
29202-CS-07 Rock	25	<0.5	18.8	34	87	54.0	101	12.3
29202-CS-08	25	1.0	13.4	20	74	31.6	63.9	7.55
29202-CS-09	25	1.0	18.4	20	89	50.8	98.9	12.6
29202-CS-09 Rpt	25	1.0	18.8	18	93	50.9	96.1	12.4
29202-CS-10	25	1.0	18.4	16	102	50.4	97.0	12.1
29202-CS(01)-01	10	<0.5	5.6	6	30	7.9	14.9	1.90
Std Nominal	20		10.1	14		20.3	44.5	
Determined	25	<0.5	9.7	12	48	19.7	43.5	4.95
29202-CS(01)-02	10	1.0	5.3	6	27	8.1	15.0	1.95
Std Nominal	135	3.5	21.0	122	82	28.0	54.0	7.20
Determined	130	3.0	20.8	114	75	29.2	57.7	7.15
29202-CS(01)-03	10	1.0	5.0	6	26	7.1	13.1	1.70
29202-CS(01)-04	10	1.0	5.3	6	25	7.2	13.9	1.85
29202-CS(01)-05	10	1.0	5.2	4	27	7.6	14.5	1.85
Std Nominal	120	3.5	24.6	90	77	33.0	68.0	7.90
Determined	125	4.5	24.0	88	84	34.0	64.9	7.95
29202-CS(01)-06	15	1.0	8.1	8	32	17.3	35.3	4.40
29202-CS(01)-07	10	1.0	5.6	70	29	8.8	15.9	1.95
29202-CS(01)-08	15	1.0	7.6	10	41	14.4	27.7	3.35
29202-CS(01)-09	10	1.0	5.8	6	30	8.2	15.5	1.90
29202-CS(01)-10	15	1.0	6.7	8	29	11.7	22.5	2.75

Relinquishment Report on Uranium Exploration of EL 29202



BUREAU Bureau Veritas Minerals Pty Ltd
VERITAS MINERAL TESTING & LABORATORY SERVICES

ABN: 30 008 127 802
35-37 Stirling Street Telephone (08) 8416 5200
Thebarton SA 5031 Facsimile (08) 8234 0355

Reference: 22014633 Order Number: TBA Page 7 of 9

Method	MA102	MA102	MA102	MA102	MA102	MA102	MA102	MA102
Result Name	Nd	Sm	Eu	Gd	Tb	Dy	Ho	Er
Units	ppm	ppm	ppm	ppm	ppm	ppm	ppm	ppm
Detection Limit	0.05	0.05	0.05	0.2	0.02	0.05	0.02	0.05
BLANK 1	<0.05	<0.05	<0.05	<0.2	<0.02	<0.05	<0.02	<0.05
29202-CS-01	78.3	15.5	1.40	13.4	1.70	7.30	1.10	2.30
29202-CS-02	26.5	5.15	0.80	4.4	0.58	3.10	0.52	1.35
29202-CS-03	32.3	6.45	0.80	5.8	0.74	3.90	0.66	1.75
29202-CS-04	35.0	6.75	0.80	6.4	0.80	4.05	0.72	1.85
Std Nominal								
Determined	24.6	5.85	1.90	6.6	0.94	5.70	1.08	3.15
29202-CS-05	32.6	6.75	0.80	5.6	0.70	3.60	0.58	1.50
29202-CS-06	28.7	5.65	0.85	4.8	0.64	3.70	0.52	1.35
29202-CS-07	25.7	4.80	0.80	4.4	0.56	2.80	0.48	1.15
Std Nominal								
Determined	12.2	3.25	1.10	3.6	0.56	3.25	0.82	2.00
29202-CS-07 Rock	44.7	8.80	1.30	7.6	0.96	4.75	0.80	1.80
29202-CS-08	27.1	5.45	0.80	4.6	0.62	3.15	0.56	1.50
29202-CS-09	45.0	8.55	0.95	7.8	0.98	4.70	0.76	1.95
29202-CS-09 Rpt	43.7	8.60	0.95	7.8	0.96	4.65	0.76	2.05
29202-CS-10	43.1	8.55	0.95	7.0	0.92	4.70	0.72	1.85
29202-CS(01)-01	7.05	1.40	0.45	1.4	0.20	1.20	0.22	0.65
Std Nominal					0.42			
Determined	19.8	3.75	1.05	3.2	0.40	2.25	0.40	1.15
29202-CS(01)-02	7.05	1.55	0.45	1.4	0.20	1.10	0.20	0.55
Std Nominal	27.0	5.50	1.30	5.6		4.30	0.80	2.50
Determined	26.8	5.35	1.35	5.2	0.74	4.35	0.82	2.35
29202-CS(01)-03	6.25	1.40	0.45	1.4	0.20	1.00	0.20	0.50
29202-CS(01)-04	6.45	1.35	0.40	1.4	0.20	1.10	0.20	0.60
29202-CS(01)-05	6.80	1.40	0.40	1.4	0.20	1.15	0.20	0.55
Std Nominal	30.6	5.95	1.40	5.4	0.80	4.85	0.94	2.60
Determined	30.9	6.10	1.35	5.8	0.84	4.80	0.92	2.75
29202-CS(01)-06	15.9	3.40	0.50	3.2	0.40	1.95	0.30	0.80
29202-CS(01)-07	7.15	1.45	0.45	1.4	0.20	1.20	0.20	0.60
29202-CS(01)-08	12.5	2.50	0.50	2.2	0.30	1.65	0.28	0.85
29202-CS(01)-09	7.10	1.50	0.50	1.4	0.20	1.20	0.22	0.60
29202-CS(01)-10	10.2	2.15	0.45	2.0	0.30	1.45	0.26	0.70

Relinquishment Report on Uranium Exploration of EL 29202



BUREAU Bureau Veritas Minerals Pty Ltd
VERITAS MINERAL TESTING & LABORATORY SERVICES

35-37 Stirling Street
Thebarton SA 5031

ABN: 30 008 127 802

Telephone (08) 8416 5200
Facsimile (08) 8234 0355

Reference: aa014633 Order Number: TBA Page 8 of 9

Method	MA102	MA102	MA102	FA001
Result Name	Tm	Yb	Lu	Au
Units	ppm	ppm	ppm	ppm
Detection Limit	0.05	0.05	0.02	0.01
BLANK 1	<0.05	<0.05	<0.02	<0.01
29202-CS-01	0.35	1.35	0.24	<0.01
29202-CS-02	0.20	1.05	0.16	<0.01
29202-CS-03	0.25	1.35	0.24	<0.01
29202-CS-04	0.30	1.55	0.22	<0.01
Std Nominal				0.38
Determined	0.45	2.65	0.42	0.37
29202-CS-05	0.20	1.15	0.18	<0.01
29202-CS-06	0.20	1.00	0.18	<0.01
29202-CS-07	0.15	0.95	0.14	<0.01
Std Nominal				1.28
Determined	0.30	1.85	0.28	1.25
29202-CS-07 Rock	0.25	1.20	0.18	<0.01
29202-CS-08	0.20	1.45	0.18	<0.01
29202-CS-09	0.30	1.45	0.22	<0.01
29202-CS-09 Rpt	0.25	1.55	0.22	<0.01
29202-CS-10	0.25	1.55	0.22	<0.01
29202-CS(01)-01	0.10	0.60	0.10	<0.01
Std Nominal		1.05		4.02
Determined	0.15	1.10	0.18	4.11
29202-CS(01)-02	0.10	0.50	0.08	<0.01
Std Nominal	0.40	2.30		0.38
Determined	0.35	2.20	0.36	NR
29202-CS(01)-03	0.10	0.50	0.08	0.01
29202-CS(01)-04	0.10	0.50	0.08	<0.01
29202-CS(01)-05	0.10	0.55	0.08	0.01
Std Nominal	0.35	2.50	0.38	1.28
Determined	0.40	2.50	0.38	NR
29202-CS(01)-06	0.10	0.65	0.10	0.01
29202-CS(01)-07	0.10	0.60	0.10	<0.01
29202-CS(01)-08	0.10	0.75	0.12	<0.01
29202-CS(01)-09	0.10	0.55	0.10	<0.01
29202-CS(01)-10	0.10	0.60	0.10	<0.01

8 of 9



BUREAU
VERITAS Bureau Veritas Minerals Pty Ltd
MINERAL TESTING & LABORATORY SERVICES

ABN: 30 008 127 802
35-37 Stirling Street Telephone (08) 8416 5200
Thebarton SA 5031 Facsimile (08) 8234 0355

Reference: aa014633 Order Number: TBA Page 9 of 9

These results pertain to the samples as received at this laboratory.
Where standards are reported, the nominal value for the element is reported above the result found.

"NR" Implies result is not required for this determination

"%" Implies this result reported in %

Sample Storage

The excess material (Residue) will be held after 30 days

The pulp samples (Pulp) will be held after 60 days as per instructions.

Sample Preparation

Digest and Analysis:

The sample(s) have been digested and refluxed with a mixture of Acids, including: Hydrofluoric, Nitric, Hydrochloric and Perchloric Acids. This extended digest approaches a total digest for many elements however, some refractory minerals are not completely attacked.

Al, Ca, Cr, Cu, Fe, K, Li, Mg, Mn, Na, Ni, P, S, Sc, Ti, V, Zn

have been determined by Inductively Coupled Plasma (ICP) Optical Emission Spectrometry.

Ag, As, Ba, Be, Bi, Cd, Ce, Co, Cs, Dy, Er, Eu, Ga, Gd, Hf, Ho, In, La, Lu, Mo, Nb, Nd, Pb, Pr, Rb, Re, Sb, Se, Sm, Sn, Sr, Ta, Tb, Te, Th, Ti, Tm, U, W, Y, Yb, Zr

have been determined by Inductively Coupled Plasma (ICP) Mass Spectrometry.

The samples have been analysed by Firing a 40 gm (approx) portion of the sample. Lower sample weights may be employed for samples with very high sulphide and metal contents. This is the classical fire assay process and will give total separation of Gold, Platinum and Palladium in the sample.

Au
have been determined by Atomic Absorption Spectrometry.