

BARRICK GOLD OF AUSTRALIA LIMITED

(ABN 008 143 137)

PROJECT 8440

TANAMI (NT) JV

BIRRINDUDU

EL 5889, EL 23472

ANNUAL REPORT

Period 1 January 2004 – 31 December 2004

VERIFICATION REPORT

TECHNICAL REPORT No. 1148

MAP SHEET: SE52-11 (Birrindudu)

DISTRIBUTION:

1. BGAL – Perth 8440.332
2. BGAL – Archive 8440.332
3. Tanami Gold NL
4. Central Land Council
5. NT DBIRD

Graeme J Purcell

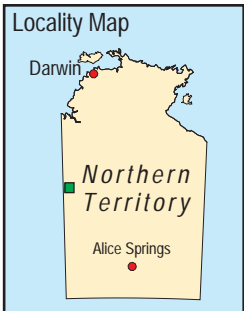
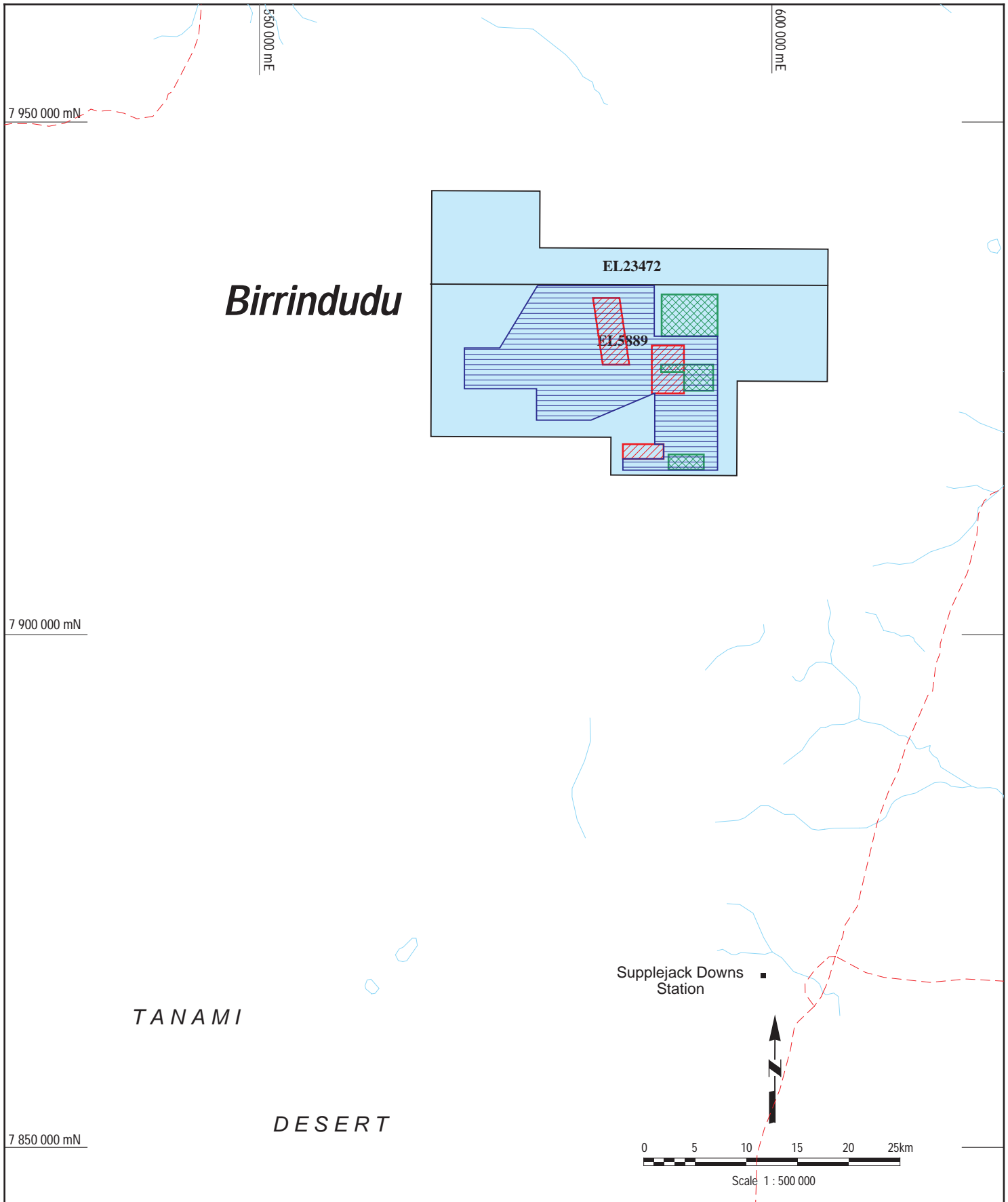
February 2005

This Report, including all text, plans designs and photographs, is the subject of copyright and is also confidential. Save as permitted by the Copyright Act 1968, no part of the report or its contents may be reproduced, copied, used or disclosed, other than in accordance with Regulation 96 of the Mining Act without prior written permission of Barrick Gold of Australia Limited





1.0 SUMMARY

The Birrindudu Project comprises Exploration Licences (EL) 5889 and 23472 and forms part of the Tanami (NT) JV, a Joint Venture agreement between Tanami Gold NL (TGNL) and Barrick Gold of Australia Limited (BGAL). The tenements were granted during 2002-2003 for a period of six years.


Work conducted on EL 5889 during 2004 involved geological compilation, surficial lag sampling, rock-chip sampling, reconnaissance vacuum drilling and aircore drilling. These activities are summarised in Table 1 and illustrated in Figure 1. There were no on-ground activities undertaken on EL 23472 as the access agreement with the Central Land Council is currently pending.



Legend

-  Barrick Tenements
-  Area of VAC drilling
-  Area of AC drilling
-  Area of surface sampling

Projection Based on AGD84 (Zone 52)



BARRICK
AUSTRALIA

BIRRINDUDU
EXPLORATION INDEX MAP

Project: 8440 - TANAMI (NT) JV

Originator: G.P.	Date Drawn: Feb 2004	Scale: 1 : 500 000	Technical Report No. 1148
Drawn By: D.F.B.	Revised:		

Ref : FILE: I:\Drafting\Tanami\Taten022.dgn
DATE: 24-Feb-05 10:38

Figure No.: 1



BARRICK GOLD OF AUSTRALIA LIMITED

ACTIVITY SUMMARY TABLE

Project: 8440 Birrindudu

Tenements	Drilling					Surface Sampling			Mapping Type & Scale			Geophysics	Compilation Work		
		DD H	RC	VAC	AC	No.	Lag	Drill BLEG	Rock Chip	Geology	Regolith	Structure	Type	Data Reviews	
	Holes			384	52		116	436	18					<i>Open File</i>	<i>Annual Report</i>
	Metres			3290	3363										
	Elements			Ag, Au, Be, Cd, Co, Cu, Mo, Pb, Pt, Sc, Sn, Ta, Th, V, W, Zn, Zr	As, Ba, Bi, Ce, Cs, Li, Ni, Pd, Sb, Se, Sr, Te, Tl, U, Zn, Zr		Ag, Au, Be, Cd, Co, Cu, Mo, Pb, Pt, Sc, Sn, Ta, Th, V, W, Zn, Zr	Au	Ag, Au, Be, Cd, Co, Cu, Mo, Ni, Pd, Pt, Sb, Se, Sn, Sr, Ta, Te, Th, Tl, U, V, W, Zn, Zr						
													Line KM	Interpretation	
														Sections	Soils
Tenement No. EL5889	Holes			384	52	No.	116	436	18					<i>Open File</i>	<i>Annual Report</i>
.....	Metres			3290	3363										
													Line KM	Interpretation	

Elements	Ag, Au, Be, Cd, Co, Cu, Mo, Pb, Pt, Sc, Sn, Ta, Th, V, Zr	As, Ba, Bi, Ce, Cs, Li, Ni, Pd, Sb, Se, Sr, Te, Ti, U, W, Zn	Ag, Au, Be, Cd, Co, Cu, Mo, Pb, Pt, Sc, Sn, Ta, Th, V, Zr	As, Ba, Bi, Ce, Cs, Li, Ni, Pd, Sb, Se, Sr, Te, Ti, U, W, Zn	Au	Ag, Au, Be, Cd, Co, Cu, Mo, Pb, Pt, Sc, Sn, Ta, Th, U, V, W, Zn, Zr	As, Ba, Bi, Ce, Cs, Li, Ni, Pd, Sb, Se, Sr, Te, Ti, U, V, W, Zn, Zr					<i>Sections</i>	<i>Soils</i>

TEMPLATE 7 - VERIFICATION LISTING FORM

Exploration Work Type	File Name	Format
Office Studies		
Literature search		
Database compilation		
Computer modelling		
Reprocessing of data		
Report	Tr1148_A_2005	pdf
Airborne Exploration Surveys		
Aeromagnetics		
Radiometrics		
Electromagnetics		
Gravity		
Digital terrain modelling		
Other (specify)		
Remote Sensing		
Aerial photography		
LANDSAT		
SPOT		
MSS		
Radar		
Other (specify)		
Ground Exploration Surveys		
Geological Mapping		
Regional		
Reconnaissance		
Prospect		
Underground		
Costean		
Ground geophysics		
Radiometrics		
Magnetics		
Gravity		
Digital terrain modelling		
Electromagnetics		
SP/AP/EP		
IP		
AMT		
Resistivity		
Complex resistivity		
Seismic reflection		
Seismic refraction		
Well logging		
Geophysical interpretation		
Other (specify)		
Geochemical Surveying		
Surface Geochemistry	Tr1148geochem.txt	WA SG2
Stream sediment		
Soil		
Rock chip		
Laterite		
Water		
Biogeochemistry		
Isotope		
Whole rock		
Mineral analysis		
Other (specify)	Petrological Report – Appendix 2	pdf
Drilling		
Data Dictionary	Drillkingdict.txt	
Collar	Tr1148coll.txt	WA SL2
Assay	Tr1148ass.txt	WA DG2
Survey	Tr1148surv.txt	WA DS2
Lithology	Tr1148litho.txt	WA DL1
Events	Tr1148event.txt	WA DL1
Recovery	Tr1148rec.txt	WA DL1
Magnetic Susceptibility	Tr1148mag.txt	WA DL1
Quartz		
Water		
Translation	Translat.txt	
Alteration	Tr1148altn.txt	WA DL1
Vein		
Structure		
Drill	Tr1148drill.txt	WA DL1