



PANGAEA
RESOURCES PTY Ltd.

BASIC WELL COMPLETION REPORT

NT EP-167 – Tarlee-S3

Prepared For: Department of Natural Resources and Mines
Date: 02-Mar-15
Revision No: B



DOCUMENT CONTROL STATUS				
this is a controlled document				
File Path and Name:	N:\EXPL\AUSTRALIA\TENEMENTS\NT\Oil_Gas\Regional_EP167 168 169 198\EP_167\4_Wells\Tarlee-S3\11_Post Operations Reports\WCR\Basic WCR\150302_EP167_Tarlee-S3 - Basic_WCR_(Rev B).docx			
Operator:	Pangaea (NT) Pty Ltd	Representative:	Joel Alnes	
Title:	Basic Well Completion Report_EP-167_Tarlee-S3			
REVISIONS				
Revision B	02/03/15	Information Addition	G&G and Engineering	DL/Ops.
Revision A	05/01/15	Initial Document	G&G and Engineering	G&G/Ops.
Rev	Date	Reason For Revision	Author	Initial
THIS REVISION				
Geology By:		Engineering By:		
Name	Initial/Date	Name	Initial/Date	
D Levy	DL	CGC/SM	CGC/05-Jan-15	
Approved For Submission By:	Joel Alnes			
APPROVALS				
Name	Position	Signature	Date	
Dan Levy	Operations Geology			
Todd Hoffman	Geoscientists		02/03/15	
Cesar Gonzalez Cruz	Operations Coordinator		02/03/15	
Steve Miller	Engineering Team Leader			
Joel Alnes	Vice-President of Exploration		02/03/15	

	BASIC WELL COMPLETION REPORT EP-167 TARLEE-S3	DOCUMENT:	T3-WCR-1503
		REVISION:	B
		PAGE:	Page 3 of 34

TABLE OF CONTENTS

ENCLOSURE 1. WIRELINE LOGS.....	3
ENCLOSURE 2. MUD LOG.....	3
ENCLOSURE 3. CORE PHOTOGRAPHY	3
1 WELL CARD (DATA SUMMARY SHEET).....	4
2 WELL SCHEMATIC.....	7
3 CEMENTING	8
3.1 SURFACE CASING CEMENT	8
3.2 INTERMEDIATE CASING CEMENT	8
3.3 CEMENT PLUG P&A.....	9
4 CORES AND SAMPLING	9
5 EVALUATION LOGS.....	9
6 WELL TESTING.....	9
7 CORE PHOTOGRAPHY.....	10
8 WELL TRAJECTORY	10
9 BIT RECORD.....	10
10 MUD RECORD.....	10

APPENDICES

APPENDIX 1. CORES / SAMPLES DETAILS.....	11
APPENDIX 2. DEVIATION SURVEY.....	31
APPENDIX 3. BIT RECORD.....	32
APPENDIX 4. FLUID RECORD.....	33

ENCLOSURES

ENCLOSURE 1. WIRELINE LOGS
ENCLOSURE 2. MUD LOG
ENCLOSURE 3. CORE PHOTOGRAPHY

	BASIC WELL COMPLETION REPORT EP-167 TARLEE-S3	DOCUMENT:	T3-WCR-1503
		REVISION:	B
		PAGE:	Page 4 of 34

1 WELL CARD (DATA SUMMARY SHEET)

GENERAL WELL INFORMATION	
Well Name and Number:	Tarlee-S3
Designation:	Petroleum stratigraphic core well
Permit:	EP-167
Basin:	McArthur Basin
Mapsheet (1:100K):	Western Creek
Graticular Block No:	[3106] (5 minute blocks)
Surveyed Location: (MGA94, Zone 53)	Latitude 15° 37' 56.74461"S (GDA94) Longitude 132° 49' 33.53895"E (GDA94) Easting 266,929.91mE (MGA94,Z53) Northing 8,270,530.66mN (MGA94,Z53)
Pastoral lease holder:	Gregory John Saunders "Tarlee" Tarlee Station, Western Creek Road Larrimah, NT
Property Description:	Parcel 3048 - "Tarlee"
Seismic Reference:	Hidden Valley PB13 (2013), Line PB13-04, Offset 66 m south of shotpoint 4950
Nearest Well:	Sever-1 (1990), 43 km North
Surveyed Elevation:	187.84 mAMSL
Well Total Depth (TD):	1650.60 mRT (Driller)
Spud Date:	21-Aug-2014
Reach TD Date:	19-Sep-2014
Rig Release Date:	22-Aug-2014
Well Status/Result:	Plugged and Abandoned/Oil and Gas Shows
OPERATOR AND DRILLING CONTRACTOR	
Operator and Titleholder:	Pangaea Galilee Pty Ltd (100%)
Operator Postal Address:	Locked Bag 1, 1 Farrer Place Sydney, NSW, 2000
Drilling Contractor:	DDH1 Drilling Pty Ltd
Rig Name and Type:	Rig-31 (UDR-5000)
Height of RT above GL:	1.4 m
RT Elevation:	189.24 mAMSL



CORED INTERVAL			
From	To	Total Interval	Core Recovery
[mRT]	[mRT]	[m]	[%]
1101.84	1650.60	548.76	99.05

FINAL WELL CONSTRUCTION									
Interval	Hole Specifications			Casing Specifications					
	Hole Size	From	To	OD	Weight	Grade	Thread	Casing Top	Shoe Depth
	[in]	[mRT]	[mRT]	[in]	[lb/ft]			[mRT]	[mRT]
Conductor	12-1/4	1.3	21.8	9-5/8	36.0	J-55	BTC	1.3	21.8
Surface	8-1/2	21.8	113.7	7	23.0	J-55	BTC	1.3	110.7
Intermediate	6-1/8	113.7	786.7	4-1/2	11.6	J-55	BTC	1.3	783.4
Test Hole	3.78 (HQ)	786.7	1650.6	Open Hole (Cement Plugged)					

DRILLING MEDIUM				
Interval	Hole Size	From	To	Fluid System
	[in]	[mRT]	[mRT]	
Conductor	12-1/4	1.3	21.8	Water – Spud Mud
Surface	8-1/2	21.8	113.7	Dry Air
Intermediate	6-1/8	113.7	786.7	Dry Air, Mist, Stiff Foam and WBM – KCl & PAC
Test Hole	3.78 (HQ)	786.7	1650.6	WBM – KCl & PAC

WIRELINE LOGS	
Logging Run	Logging Suite
Run #1	Compact Gamma Ray/Temp (MCG)
	Compact Dual Neutron (MDN)
	Compact Photo Density (MPD)
	Compact Dual Laterlog (MDL)
	Compact Micro Resistivity (MMR)
	Compact Micro Imager (CMI) (Caliper Only)
	Compact Sonic (MSS)
Run #2	Velocity Check Shots (VCS)



WELL EVALUATION LOGS

Log Name

Field generated basic mud log

Interpreted mud log

CEMENT PLUGS

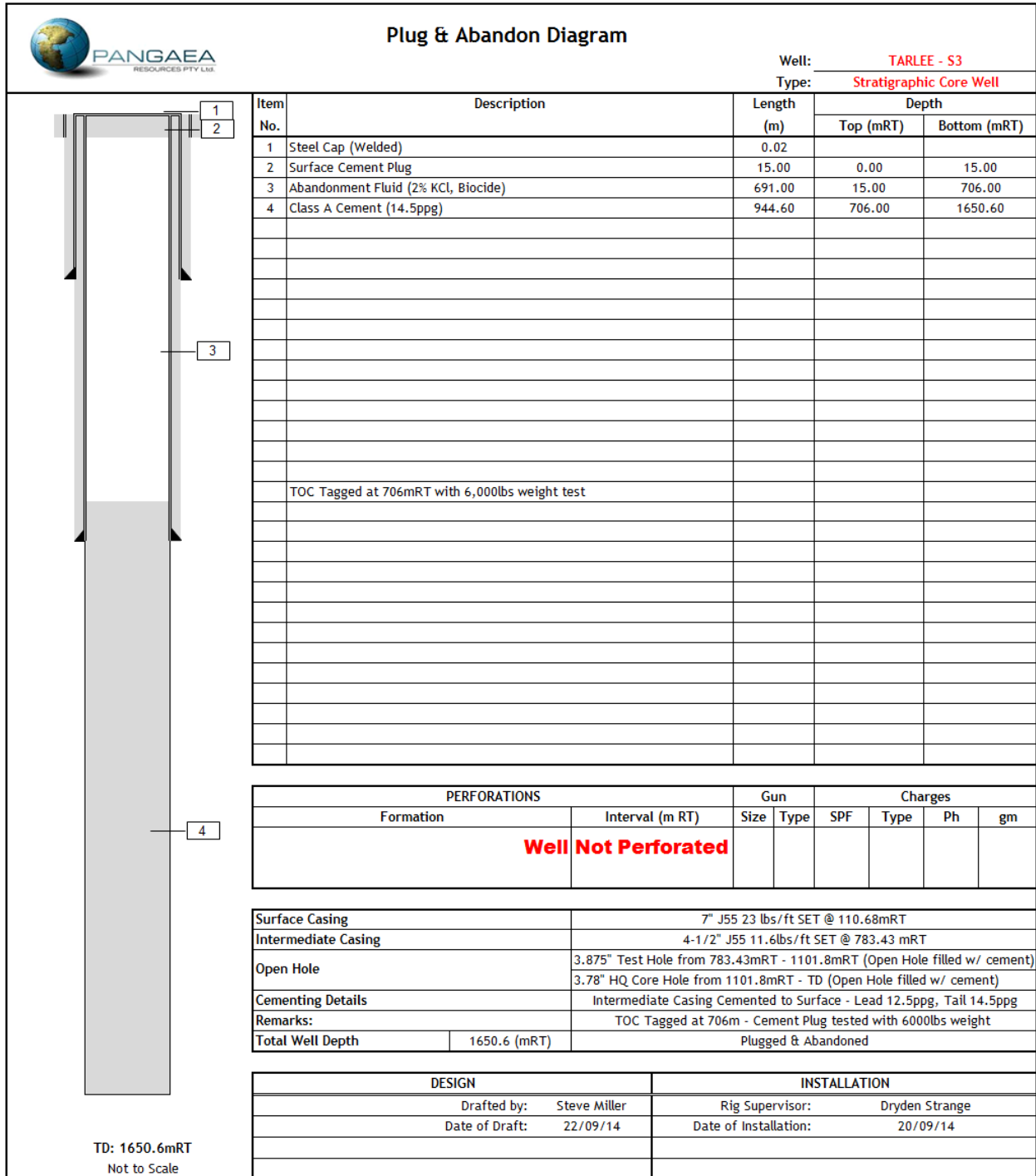
Number	From	To	Length	Excess
	[mRT]	[mRT]	[m]	[%]
1 – Stage 1	1650.6	1500.0	150.6	15.0
1 – Stage 2	1500.0	1350.0	150.0	15.0
1 – Stage 3	1350.0	1200.0	150.0	15.0
1 – Stage 4	1200.0	1050.0	150.0	15.0
1 – Stage 5	1050.0	900.0	150.0	15.0
1 – Stage 6	900.0	706.0	194.0	15.0 (Open Hole Only)
2 – Surface	17.5	1.4	16.1	0.0

FORMATION TOPS

Formation	Predicted Depth	Depth	Depth	Depth	Depth	Thickness
	(mRT)	(mRT)	(mGL)	(mTVD)	(mSS)	(m)
Surficial Sediments	1	1.3	0.0	1.3	-187.84	12
Undifferentiated Cretaceous	13	13.3	12.0	13.3	-175.84	23
Tindal Limestone	36	36.3	35.0	36.3	-152.84	23
Antrim Plateau Volcanics	41	59.6	58.3	59.6	-129.55	174
Cox Formation	-	233.8	232.5	233.8	44.69	46
Bukalara Formation	-	279.5	278.2	279.5	90.33	93
Base Cambrian Unconformity	301	372.9	371.6	372.9	183.74	318
Intra-Kyalla Sandstone	-	690.5	689.2	690.5	501.40	182
Moroak Sandstone	646	872.3	871.0	872.3	683.15	130
Upper Velkerri	-	1002.2	1000.9	1002.2	813.06	211
Middle Velkerri	-	1213.1	1211.8	1213.1	1023.98	268
Derim Derim Sill	1496	1481.0	1479.7	1481.0	1291.84	67
Middle Velkerri Continued	-	1546.7	1545.4	1546.7	1357.59	50
Lower Velkerri	-	1596.7	1595.4	1596.7	1407.56	-
TD	1581	1650.6	1649.3	1650.6	1461.46	-



2 WELL SCHEMATIC



	BASIC WELL COMPLETION REPORT EP-167 TARLEE-S3	DOCUMENT:	T3-WCR-1503
		REVISION:	B
		PAGE:	Page 8 of 34

3 CEMENTING

3.1 Surface Casing Cement

The 8-1/2" surface hole was drilled to 113.68 mRT and 7" casing was run to 110.68mRT. The casing was cemented by pumping 18bbl slurry of 13.5ppg Class A cement w/FR-100 and CaCl additives and displaced with 13.7bbl water. Bump plug; held 1000psi for 15min. No cement returns were seen at surface. A top up cement job was performed by pumping 6.3bbl slurry of 13.7ppg Class A cement.

Surface Casing Cement	
Parameters	
Casing Section:	Surface
Casing Details:	7" 23 lb/ft J-55 BTC
Annulus:	8-1/2" Open Hole
Casing Shoe Depth:	110.68 mRT
Cement Type:	Class A, w/FR-100 & CaCl additives
Cement Weight:	13.5 ppg
Cement Excess Pumped:	100%
Top of Cement Depth:	Top-up cement job at surface.

3.2 Intermediate Casing Cement

The 6-1/8" intermediate hole was drilled to 786.3mRT and 4-1/2" casing was run to 783.43mRT. A 10bbl spacer was pumped followed by pumping 62bbl of 12.5ppg Lead slurry and 9.4bbl 14.5ppg Tail slurry. The plug was dropped and cement displaced with 39.4bbl of fluid. Bump plug; held 1565psi for 15 min. Cement returns were seen at surface.

Intermediate Casing Cement	
Parameters	
Casing Section:	Intermediate
Casing Details:	4-1/2" 11.6 lb/ft J-55 BTC
Annulus:	6-1/8" Open Hole
Casing Shoe Depth:	783.43 mRT
Cement Type:	Class A
Cement Weight:	Lead: 12.5 ppg, Tail: 14.5ppg
Cement Excess Pumped:	50%
Top of Cement Depth:	Surface

	BASIC WELL COMPLETION REPORT EP-167 TARLEE-S3	DOCUMENT:	T3-WCR-1503
		REVISION:	B
		PAGE:	Page 9 of 34

3.3 Cement Plug P&A

Cement Plug			
Parameters			
Plug Type:	Cement	Drilling Mud Type:	WBM
Plugged Sections:	TD – 706.0 mRT 15.0 – 0.0m	Drilling Mud Density:	9.0 ppg
Specifications			
Cement Type:	PlugCem (Class A)		
Cement Density:	14.5 ppg		
Cementing Stages			
N°	Bottom	Top	Length
	[mRT]	[mRT]	[m]
1	1650.6	1500.0	150.6
2	1500.0	1350.0	150.0
3	1350.0	1200.0	150.0
4	1200.0	1050.0	150.0
5	1050.0	900.0	150.0
6	900.0	*706.0	194.0
706.0 – 15.0m (Abandonment Fluid)			
7	15.0	0.0	15.0

*Top of cement tagged at 706mRt with a 6,000lb weight test

4 CORES AND SAMPLING

Please see **Appendix 1** for details of cores and samples taken.

5 EVALUATION LOGS

Please see **Enclosure 1** for digital wireline log data.

Please see **Enclosure 2** for graphical mud log.

No measurement, logging or pressure while drilling logs were performed in.

6 WELL TESTING

No formation fluid samples or productions tests were performed.

	BASIC WELL COMPLETION REPORT EP-167 TARLEE-S3	DOCUMENT:	T3-WCR-1503
		REVISION:	B
		PAGE:	Page 10 of 34

7 CORE PHOTOGRAPHY

Please see **Enclosure 3** for core photography.

8 WELL TRAJECTORY

Please see **Appendix 2** for deviation survey results.

9 BIT RECORD

Please see **Appendix 3** for bit record.

10 MUD RECORD

Please see **Appendix 4** for mud record.



APPENDIX 1. CORES / SAMPLES DETAILS

CORE RUN DETAILS

Pangaea Resources Tarlee-S3 Core run details						
Run No.	Top Depth	Bottom Depth	Drilled/Cored	Recovery	Loss/Gain	Recovery
	mRT	mRT	m	m	m	%
1	1101.84	1105.20	3.36	3.63	0.27	108.04
2	1105.20	1111.20	6.00	5.9	-0.01	99.83
3	1111.20	1117.20	6.00	6.06	0.06	101.00
4	1117.20	1123.20	6.00	6.04	0.04	100.67
5	1123.20	1129.20	6.00	2.80	-3.20	46.67
6	1129.20	1132.20	3.00	6.18	3.18	206.00
7	1132.20	1138.20	6.00	5.48	-0.52	91.33
8	1138.20	1143.50	5.30	6.20	0.90	116.98
9	1143.50	1149.35	5.85	5.45	-0.40	93.16
10	1149.35	1153.20	3.85	4.09	0.24	106.23
11	1153.20	1159.20	6.00	6.00	0.00	100.00
12	1159.20	1165.20	6.00	5.98	-0.02	99.67
13	1165.20	1171.20	6.00	6.07	0.07	101.17
14	1171.20	1177.20	6.00	5.75	-0.25	95.83
15	1177.20	1183.00	5.80	6.13	0.33	105.69
16	1183.00	1189.00	6.00	6.17	0.17	102.83
17	1189.00	1195.10	6.10	6.08	-0.02	99.67
18	1195.10	1201.20	6.10	6.08	-0.02	99.67
19	1201.20	1207.20	6.00	6.20	0.20	103.33
20	1207.20	1213.20	6.00	6.00	0.00	100.00
21	1213.20	1219.20	6.00	6.04	0.04	100.67
22	1219.20	1225.20	6.00	6.00	0.00	100.00
23	1225.20	1231.20	6.00	6.01	0.01	100.17
24	1231.20	1237.20	6.00	6.12	0.12	102.00
25	1237.20	1243.20	6.00	5.98	-0.02	99.67
26	1243.20	1249.20	6.00	6.00	0.00	100.00
27	1249.20	1255.20	6.00	6.00	0.00	100.00
28	1255.20	1261.20	6.00	6.00	0.00	100.00
29	1261.20	1267.20	6.00	5.55	-0.45	92.50
30	1267.20	1272.85	5.65	2.00	-3.65	35.40
31	1272.85	1273.20	0.35	1.44	1.09	411.43
32	1273.20	1276.20	3.00	5.85	2.85	195.00
33	1276.20	1282.20	6.00	5.73	-0.27	95.50
34	1282.20	1287.00	4.80	5.50	0.70	114.58
35	1287.00	1291.20	4.20	3.85	-0.35	91.67
36	1291.20	1297.20	6.00	1.41	-4.59	23.50
37	1297.20	1298.20	1.00	5.40	4.40	540.00



DOCUMENT:	T3-WCR-1503
REVISION:	B
PAGE:	Page 12 of 34

38	1298.20	1303.20	5.00	5.13	0.13	102.60
39	1303.20	1309.20	6.00	6.05	0.05	100.83
40	1309.20	1315.20	6.00	6.07	0.07	101.17
41	1315.20	1321.20	6.00	6.05	0.05	100.83
42	1321.20	1327.20	6.00	5.95	-0.05	99.17
43	1327.20	1330.70	3.50	3.35	-0.15	95.71
44	1330.70	1333.20	2.50	1.89	-0.61	75.60
45	1333.20	1338.20	5.00	0.90	-4.10	18.00
46	1338.20	1338.20	0.00	1.20	1.20	#DIV/0!
47	1338.20	1342.10	3.90	1.90	-2.00	48.72
48	1342.10	1343.00	0.90	3.06	2.16	340.00
49	1343.00	1348.20	5.20	5.03	-0.17	96.73
50	1348.20	1354.20	6.00	5.90	-0.10	98.33
51	1354.20	1360.20	6.00	6.10	0.10	101.67
52	1360.20	1366.20	6.00	6.15	0.15	102.50
53	1366.20	1372.20	6.00	6.03	0.03	100.50
54	1372.20	1378.20	6.00	6.02	0.02	100.33
55	1378.20	1384.20	6.00	5.89	-0.11	98.17
56	1384.20	1390.20	6.00	6.05	0.05	100.83
57	1390.20	1396.20	6.00	6.06	0.06	101.00
58	1396.20	1402.20	6.00	5.32	-0.68	88.67
59	1402.20	1407.60	5.40	5.82	0.42	107.78
60	1407.60	1410.20	2.60	2.90	0.30	111.54
61	1410.20	1414.20	4.00	4.06	0.06	101.50
62	1414.20	1420.20	6.00	6.00	0.00	100.00
63	1420.20	1426.20	6.00	6.15	0.15	102.50
64	1426.20	1427.70	1.50	1.50	0.00	100.00
65	1427.70	1432.20	4.50	4.50	0.00	100.00
66	1432.20	1438.20	6.00	6.00	0.00	100.00
67	1438.20	1442.90	4.70	4.56	-0.14	97.02
68	1442.90	1444.00	1.10	1.20	0.10	109.09
69	1444.00	1450.10	6.10	6.10	0.00	100.00
70	1450.10	1456.20	6.10	6.08	-0.02	99.67
71	1456.20	1459.30	3.10	3.12	0.02	100.65
72	1459.30	1465.30	6.00	6.08	0.08	101.33
73	1465.30	1471.20	5.90	6.09	0.19	103.22
74	1471.20	1477.20	6.00	6.05	0.05	100.83
75	1477.20	1483.20	6.00	6.00	0.00	100.00
76	1483.20	1489.20	6.00	6.00	0.00	100.00
77	1489.20	1495.20	6.00	6.00	0.00	100.00
78	1495.20	1501.20	6.00	6.00	0.00	100.00
79	1501.20	1507.20	6.00	5.98	-0.02	99.67
80	1507.20	1513.20	6.00	6.02	0.02	100.33



81	1513.20	1519.20	6.00	6.00	0.00	100.00
82	1519.20	1522.20	3.00	2.85	-0.15	95.00
83	1522.20	1528.20	6.00	6.04	0.04	100.67
84	1528.20	1531.90	3.70	3.68	-0.02	99.46
85	1531.90	1537.20	5.30	5.40	0.10	101.89
86	1537.20	1543.20	6.00	5.98	-0.02	99.67
87	1543.20	1549.20	6.00	6.15	0.15	102.50
88	1549.20	1555.20	6.00	6.00	0.00	100.00
89	1555.20	1557.80	2.60	2.62	0.02	100.77
90	1557.80	1561.20	3.40	3.40	0.00	100.00
91	1561.20	1567.20	6.00	6.00	0.00	100.00
92	1567.20	1573.20	6.00	6.05	0.05	100.83
93	1573.20	1579.20	6.00	6.00	0.00	100.00
94	1579.20	1585.20	6.00	6.00	0.00	100.00
95	1585.20	1591.20	6.00	6.10	0.10	101.67
96	1591.20	1597.20	6.00	6.00	0.00	100.00
97	1597.20	1603.20	6.00	5.32	-0.68	88.67
98	1603.20	1608.74	5.54	6.18	0.64	111.55
99	1608.74	1614.48	5.74	0.00	-5.74	0.00
100	1614.48	1614.66	0.18	5.52	5.34	3066.67
101	1614.66	1618.20	3.54	3.56	0.02	100.56
102	1618.20	1621.00	2.80	1.55	-1.25	55.36
103	1621.00	1624.20	3.20	2.90	-0.30	90.62
104	1624.20	1629.40	5.20	5.96	0.76	114.62
105	1629.40	1633.20	3.80	3.98	0.18	104.74
106	1633.20	1639.20	6.00	6.00	0.00	100.00
107	1639.20	1645.20	6.00	0.42	-5.58	7.00
108	1645.20	1645.30	0.10	4.96	4.86	4960.00
109	1645.30	1650.60	5.30	0.94	-4.36	17.74
110	1650.60	1650.60	0.00	2.40	2.40	n.a.

SAMPLE DETAILS

Pangaea Resources Tarlee-S3 Sampling Log				
Sample Type	Storage	Cuttings Top Depth	Cuttings Bottom Depth	Core Chip Depth
Cuttings	Plastic Samplex Tray	40.00	46.00	
Cuttings	Plastic Samplex Tray	46.00	52.00	
Cuttings	Plastic Samplex Tray	52.00	58.00	
Cuttings	Plastic Samplex Tray	58.00	64.00	
Cuttings	Plastic Samplex Tray	64.00	70.00	
Cuttings	Plastic Samplex Tray	70.00	76.00	
Cuttings	Plastic Samplex Tray	76.00	82.00	
Cuttings	Plastic Samplex Tray	82.00	88.00	
Cuttings	Plastic Samplex Tray	88.00	94.00	



DOCUMENT:	T3-WCR-1503
REVISION:	B
PAGE:	Page 14 of 34

Cuttings	Plastic Samplex Tray	94.00	100.00	
Cuttings	Plastic Samplex Tray	100.00	106.00	
Cuttings	Plastic Samplex Tray	106.00	113.00	
Cuttings	Plastic Samplex Tray	113.00	116.00	
Cuttings	Plastic Samplex Tray	116.00	122.00	
Cuttings	Plastic Samplex Tray	122.00	128.00	
Cuttings	Plastic Samplex Tray	128.00	134.00	
Cuttings	Plastic Samplex Tray	134.00	140.00	
Cuttings	Plastic Samplex Tray	140.00	146.00	
Cuttings	Plastic Samplex Tray	146.00	152.00	
Cuttings	Plastic Samplex Tray	152.00	158.00	
Cuttings	Plastic Samplex Tray	158.00	164.00	
Cuttings	Plastic Samplex Tray	164.00	170.00	
Cuttings	Plastic Samplex Tray	170.00	176.00	
Cuttings	Plastic Samplex Tray	176.00	182.00	
Cuttings	Plastic Samplex Tray	182.00	188.00	
Cuttings	Plastic Samplex Tray	188.00	194.00	
Cuttings	Plastic Samplex Tray	194.00	200.00	
Cuttings	Plastic Samplex Tray	200.00	206.00	
Cuttings	Plastic Samplex Tray	206.00	212.00	
Cuttings	Plastic Samplex Tray	212.00	218.00	
Cuttings	Plastic Samplex Tray	218.00	224.00	
Cuttings	Plastic Samplex Tray	224.00	230.00	
Cuttings	Plastic Samplex Tray	230.00	236.00	
Cuttings	Plastic Samplex Tray	236.00	242.00	
Cuttings	Plastic Samplex Tray	242.00	248.00	
Cuttings	Plastic Samplex Tray	248.00	254.00	
Cuttings	Plastic Samplex Tray	254.00	260.00	
Cuttings	Plastic Samplex Tray	260.00	266.00	
Cuttings	Plastic Samplex Tray	266.00	272.00	
Cuttings	Plastic Samplex Tray	272.00	278.00	
Cuttings	Plastic Samplex Tray	284.00	290.00	
Cuttings	Plastic Samplex Tray	290.00	296.00	
Cuttings	Plastic Samplex Tray	296.00	302.00	
Cuttings	Plastic Samplex Tray	302.00	308.00	
Cuttings	Plastic Samplex Tray	308.00	314.00	
Cuttings	Plastic Samplex Tray	314.00	320.00	
Cuttings	Plastic Samplex Tray	320.00	326.00	
Cuttings	Plastic Samplex Tray	326.00	332.00	
Cuttings	Plastic Samplex Tray	332.00	338.00	
Cuttings	Plastic Samplex Tray	338.00	344.00	
Cuttings	Plastic Samplex Tray	344.00	350.00	
Cuttings	Plastic Samplex Tray	350.00	356.00	



Cuttings	Plastic Samplex Tray	356.00	362.00	
Cuttings	Plastic Samplex Tray	362.00	368.00	
Cuttings	Plastic Samplex Tray	368.00	374.00	
Cuttings	Plastic Samplex Tray	374.00	380.00	
Cuttings	Plastic Samplex Tray	380.00	386.00	
Cuttings	Plastic Samplex Tray	386.00	392.00	
Cuttings	Plastic Samplex Tray	392.00	398.00	
Cuttings	Plastic Samplex Tray	398.00	404.00	
Cuttings	Plastic Samplex Tray	404.00	410.00	
Cuttings	Plastic Samplex Tray	410.00	416.00	
Cuttings	Plastic Samplex Tray	416.00	422.00	
Cuttings	Plastic Samplex Tray	422.00	428.00	
Cuttings	Plastic Samplex Tray	428.00	434.00	
Cuttings	Plastic Samplex Tray	434.00	440.00	
Cuttings	Plastic Samplex Tray	440.00	446.00	
Cuttings	Plastic Samplex Tray	446.00	452.00	
Cuttings	Plastic Samplex Tray	452.00	458.00	
Cuttings	Plastic Samplex Tray	458.00	464.00	
Cuttings	Plastic Samplex Tray	464.00	470.00	
Cuttings	Plastic Samplex Tray	470.00	476.00	
Cuttings	Plastic Samplex Tray	476.00	482.00	
Cuttings	Plastic Samplex Tray	482.00	488.00	
Cuttings	Plastic Samplex Tray	488.00	494.00	
Cuttings	Plastic Samplex Tray	494.00	500.00	
Cuttings	Plastic Samplex Tray	500.00	506.00	
Cuttings	Plastic Samplex Tray	506.00	512.00	
Cuttings	Plastic Samplex Tray	512.00	518.00	
Cuttings	Plastic Samplex Tray	518.00	524.00	
Cuttings	Plastic Samplex Tray	524.00	530.00	
Cuttings	Plastic Samplex Tray	530.00	536.00	
Cuttings	Plastic Samplex Tray	536.00	542.00	
Cuttings	Plastic Samplex Tray	542.00	548.00	
Cuttings	Plastic Samplex Tray	548.00	554.00	
Cuttings	Plastic Samplex Tray	554.00	560.00	
Cuttings	Plastic Samplex Tray	560.00	566.00	
Cuttings	Plastic Samplex Tray	566.00	572.00	
Cuttings	Plastic Samplex Tray	572.00	578.00	
Cuttings	Plastic Samplex Tray	578.00	584.00	
Cuttings	Plastic Samplex Tray	584.00	590.00	
Cuttings	Plastic Samplex Tray	590.00	596.00	
Cuttings	Plastic Samplex Tray	596.00	602.00	
Cuttings	Plastic Samplex Tray	602.00	608.00	
Cuttings	Plastic Samplex Tray	608.00	614.00	



DOCUMENT:	T3-WCR-1503
REVISION:	B
PAGE:	Page 16 of 34

Cuttings	Plastic Samplex Tray	614.00	620.00	
Cuttings	Plastic Samplex Tray	620.00	626.00	
Cuttings	Plastic Samplex Tray	626.00	632.00	
Cuttings	Plastic Samplex Tray	632.00	638.00	
Cuttings	Plastic Samplex Tray	638.00	644.00	
Cuttings	Plastic Samplex Tray	644.00	650.00	
Cuttings	Plastic Samplex Tray	650.00	656.00	
Cuttings	Plastic Samplex Tray	656.00	662.00	
Cuttings	Plastic Samplex Tray	662.00	668.00	
Cuttings	Plastic Samplex Tray	668.00	674.00	
Cuttings	Plastic Samplex Tray	674.00	680.00	
Cuttings	Plastic Samplex Tray	680.00	686.00	
Cuttings	Plastic Samplex Tray	686.00	692.00	
Cuttings	Plastic Samplex Tray	692.00	698.00	
Cuttings	Plastic Samplex Tray	698.00	704.00	
Cuttings	Plastic Samplex Tray	704.00	710.00	
Cuttings	Plastic Samplex Tray	710.00	716.00	
Cuttings	Plastic Samplex Tray	716.00	722.00	
Cuttings	Plastic Samplex Tray	722.00	728.00	
Cuttings	Plastic Samplex Tray	728.00	734.00	
Cuttings	Plastic Samplex Tray	734.00	740.00	
Cuttings	Plastic Samplex Tray	740.00	746.00	
Cuttings	Plastic Samplex Tray	746.00	752.00	
Cuttings	Plastic Samplex Tray	752.00	758.00	
Cuttings	Plastic Samplex Tray	758.00	764.00	
Cuttings	Plastic Samplex Tray	764.00	770.00	
Cuttings	Plastic Samplex Tray	770.00	776.00	
Cuttings	Plastic Samplex Tray	776.00	782.00	
Cuttings	Plastic Samplex Tray	782.00	788.00	
Cuttings	Plastic Samplex Tray	790	796	
Cuttings	Plastic Samplex Tray	796	802	
Cuttings	Plastic Samplex Tray	802	808	
Cuttings	Plastic Samplex Tray	808	814	
Cuttings	Plastic Samplex Tray	814	820	
Cuttings	Plastic Samplex Tray	820	826	
Cuttings	Plastic Samplex Tray	826	832	
Cuttings	Plastic Samplex Tray	832	838	
Cuttings	Plastic Samplex Tray	838	844	
Cuttings	Plastic Samplex Tray	844	850	
Cuttings	Plastic Samplex Tray	850	856	
Cuttings	Plastic Samplex Tray	856	862	
Cuttings	Plastic Samplex Tray	862	868	
Cuttings	Plastic Samplex Tray	868	874	



DOCUMENT:	T3-WCR-1503
REVISION:	B
PAGE:	Page 17 of 34

Cuttings	Plastic Samplex Tray	874	880	
Cuttings	Plastic Samplex Tray	880	886	
Cuttings	Plastic Samplex Tray	886	892	
Cuttings	Plastic Samplex Tray	892	898	
Cuttings	Plastic Samplex Tray	898	904	
Cuttings	Plastic Samplex Tray	904	910	
Cuttings	Plastic Samplex Tray	910	916	
Cuttings	Plastic Samplex Tray	916	922	
Cuttings	Plastic Samplex Tray	922	928	
Cuttings	Plastic Samplex Tray	928	934	
Cuttings	Plastic Samplex Tray	934	940	
Cuttings	Plastic Samplex Tray	940	946	
Cuttings	Plastic Samplex Tray	946	952	
Cuttings	Plastic Samplex Tray	952	958	
Cuttings	Plastic Samplex Tray	958	964	
Cuttings	Plastic Samplex Tray	964	970	
Cuttings	Plastic Samplex Tray	970	976	
Cuttings	Plastic Samplex Tray	976	982	
Cuttings	Plastic Samplex Tray	982	988	
Cuttings	Plastic Samplex Tray	988	994	
Cuttings	Plastic Samplex Tray	994	1000	
Cuttings	Plastic Samplex Tray	1000	1006	
Cuttings	Plastic Samplex Tray	1006	1012	
Cuttings	Plastic Samplex Tray	1012	1018	
Cuttings	Plastic Samplex Tray	1018	1024	
Cuttings	Plastic Samplex Tray	1024	1030	
Cuttings	Plastic Samplex Tray	1030	1036	
Cuttings	Plastic Samplex Tray	1036	1042	
Cuttings	Plastic Samplex Tray	1042	1048	
Cuttings	Plastic Samplex Tray	1048	1054	
Cuttings	Plastic Samplex Tray	1054	1060	
Cuttings	Plastic Samplex Tray	1060	1066	
Cuttings	Plastic Samplex Tray	1066	1072	
Cuttings	Plastic Samplex Tray	1072	1078	
Cuttings	Plastic Samplex Tray	1078	1084	
Cuttings	Plastic Samplex Tray	1084	1090	
Cuttings	Plastic Samplex Tray	1090	1096	
Cuttings	Plastic Samplex Tray	1096	1102	
Core Chips	Plastic Samplex Tray			1102.56
Core Chips	Plastic Samplex Tray			1103.55
Core Chips	Plastic Samplex Tray			1104.46
Core Chips	Plastic Samplex Tray			1105.5
Core Chips	Plastic Samplex Tray			1106.51



DOCUMENT:	T3-WCR-1503
REVISION:	B
PAGE:	Page 18 of 34

Core Chips	Plastic Samplex Tray			1107.54
Core Chips	Plastic Samplex Tray			1108.45
Core Chips	Plastic Samplex Tray			1109.34
Core Chips	Plastic Samplex Tray			1110.54
Core Chips	Plastic Samplex Tray			1111.61
Core Chips	Plastic Samplex Tray			1112.53
Core Chips	Plastic Samplex Tray			1113.4
Core Chips	Plastic Samplex Tray			1114.5
Core Chips	Plastic Samplex Tray			1115.55
Core Chips	Plastic Samplex Tray			1116.4
Core Chips	Plastic Samplex Tray			1117.44
Core Chips	Plastic Samplex Tray			1118.43
Core Chips	Plastic Samplex Tray			1119.44
Core Chips	Plastic Samplex Tray			1120.51
Core Chips	Plastic Samplex Tray			1121.53
Core Chips	Plastic Samplex Tray			1122.45
Core Chips	Plastic Samplex Tray			1123.41
Core Chips	Plastic Samplex Tray			1124.47
Core Chips	Plastic Samplex Tray			1125.48
Core Chips	Plastic Samplex Tray			1126.49
Core Chips	Plastic Samplex Tray			1127.55
Core Chips	Plastic Samplex Tray			1128.49
Core Chips	Plastic Samplex Tray			1129.57
Core Chips	Plastic Samplex Tray			1130.5
Core Chips	Plastic Samplex Tray			1131.48
Core Chips	Plastic Samplex Tray			1132.5
Core Chips	Plastic Samplex Tray			1133.45
Core Chips	Plastic Samplex Tray			1134.55
Core Chips	Plastic Samplex Tray			1135.55
Core Chips	Plastic Samplex Tray			1136.59
Core Chips	Plastic Samplex Tray			1137.59
Core Chips	Plastic Samplex Tray			1138.53
Core Chips	Plastic Samplex Tray			1139.53
Core Chips	Plastic Samplex Tray			1140.48
Core Chips	Plastic Samplex Tray			1141.51
Core Chips	Plastic Samplex Tray			1142.62
Core Chips	Plastic Samplex Tray			1143.54
Core Chips	Plastic Samplex Tray			1144.44
Core Chips	Plastic Samplex Tray			1145.62
Core Chips	Plastic Samplex Tray			1146.53
Core Chips	Plastic Samplex Tray			1147.46
Core Chips	Plastic Samplex Tray			1148.4
Core Chips	Plastic Samplex Tray			1149.61



Core Chips	Plastic Samplex Tray			1150.43
Core Chips	Plastic Samplex Tray			1151.47
Core Chips	Plastic Samplex Tray			1152.49
Core Chips	Plastic Samplex Tray			1153.46
Core Chips	Plastic Samplex Tray			1154.54
Core Chips	Plastic Samplex Tray			1155.43
Core Chips	Plastic Samplex Tray			1156.46
Core Chips	Plastic Samplex Tray			1157.52
Core Chips	Plastic Samplex Tray			1158.51
Core Chips	Plastic Samplex Tray			1159.6
Core Chips	Plastic Samplex Tray			1160.52
Core Chips	Plastic Samplex Tray			1161.51
Core Chips	Plastic Samplex Tray			1162.43
Core Chips	Plastic Samplex Tray			1163.56
Core Chips	Plastic Samplex Tray			1164.55
Core Chips	Plastic Samplex Tray			1165.49
Core Chips	Plastic Samplex Tray			1166.49
Core Chips	Plastic Samplex Tray			1167.5
Core Chips	Plastic Samplex Tray			1168.49
Core Chips	Plastic Samplex Tray			1169.4
Core Chips	Plastic Samplex Tray			1170.53
Core Chips	Plastic Samplex Tray			1171.41
Core Chips	Plastic Samplex Tray			1172.49
Core Chips	Plastic Samplex Tray			1173.48
Core Chips	Plastic Samplex Tray			1174.78
Core Chips	Plastic Samplex Tray			1175.48
Core Chips	Plastic Samplex Tray			1176.55
Core Chips	Plastic Samplex Tray			1177.5
Core Chips	Plastic Samplex Tray			1178.44
Core Chips	Plastic Samplex Tray			1179.54
Core Chips	Plastic Samplex Tray			1180.54
Core Chips	Plastic Samplex Tray			1181.49
Core Chips	Plastic Samplex Tray			1182.48
Core Chips	Plastic Samplex Tray			1183.47
Core Chips	Plastic Samplex Tray			1184.47
Core Chips	Plastic Samplex Tray			1185.47
Core Chips	Plastic Samplex Tray			1186.5
Core Chips	Plastic Samplex Tray			1187.5
Core Chips	Plastic Samplex Tray			1188.52
Core Chips	Plastic Samplex Tray			1189.54
Core Chips	Plastic Samplex Tray			1190.47
Core Chips	Plastic Samplex Tray			1191.51
Core Chips	Plastic Samplex Tray			1192.52



DOCUMENT:	T3-WCR-1503
REVISION:	B
PAGE:	Page 20 of 34

Core Chips	Plastic Samplex Tray			1193.41
Core Chips	Plastic Samplex Tray			1194.57
Core Chips	Plastic Samplex Tray			1195.55
Core Chips	Plastic Samplex Tray			1196.51
Core Chips	Plastic Samplex Tray			1197.46
Core Chips	Plastic Samplex Tray			1198.58
Core Chips	Plastic Samplex Tray			1199.5
Core Chips	Plastic Samplex Tray			1200.42
Core Chips	Plastic Samplex Tray			1201.63
Core Chips	Plastic Samplex Tray			1202.54
Core Chips	Plastic Samplex Tray			1203.59
Core Chips	Plastic Samplex Tray			1204.54
Core Chips	Plastic Samplex Tray			1205.53
Core Chips	Plastic Samplex Tray			1206.57
Core Chips	Plastic Samplex Tray			1207.55
Core Chips	Plastic Samplex Tray			1208.43
Core Chips	Plastic Samplex Tray			1209.42
Core Chips	Plastic Samplex Tray			1210.53
Core Chips	Plastic Samplex Tray			1211.5
Core Chips	Plastic Samplex Tray			1212.55
Core Chips	Plastic Samplex Tray			1213.56
Core Chips	Plastic Samplex Tray			1214.62
Core Chips	Plastic Samplex Tray			1215.36
Core Chips	Plastic Samplex Tray			1216.5
Core Chips	Plastic Samplex Tray			1217.57
Core Chips	Plastic Samplex Tray			1218.63
Core Chips	Plastic Samplex Tray			1219.54
Core Chips	Plastic Samplex Tray			1220.55
Core Chips	Plastic Samplex Tray			1221.5
Core Chips	Plastic Samplex Tray			1222.5
Core Chips	Plastic Samplex Tray			1223.44
Core Chips	Plastic Samplex Tray			1224.45
Core Chips	Plastic Samplex Tray			1225.57
Core Chips	Plastic Samplex Tray			1226.55
Core Chips	Plastic Samplex Tray			1227.52
Core Chips	Plastic Samplex Tray			1228.6
Core Chips	Plastic Samplex Tray			1229.47
Core Chips	Plastic Samplex Tray			1230.54
Core Chips	Plastic Samplex Tray			1231.48
Core Chips	Plastic Samplex Tray			1232.51
Core Chips	Plastic Samplex Tray			1233.53
Core Chips	Plastic Samplex Tray			1234.49
Core Chips	Plastic Samplex Tray			1235.5



Core Chips	Plastic Samplex Tray			1236.49
Core Chips	Plastic Samplex Tray			1237.4
Core Chips	Plastic Samplex Tray			1238.52
Core Chips	Plastic Samplex Tray			1239.48
Core Chips	Plastic Samplex Tray			1240.43
Core Chips	Plastic Samplex Tray			1241.51
Core Chips	Plastic Samplex Tray			1242.5
Core Chips	Plastic Samplex Tray			1243.52
Core Chips	Plastic Samplex Tray			1244.54
Core Chips	Plastic Samplex Tray			1245.55
Core Chips	Plastic Samplex Tray			1246.45
Core Chips	Plastic Samplex Tray			1247.55
Core Chips	Plastic Samplex Tray			1248.42
Core Chips	Plastic Samplex Tray			1249.54
Core Chips	Plastic Samplex Tray			1250.53
Core Chips	Plastic Samplex Tray			1251.56
Core Chips	Plastic Samplex Tray			1252.5
Core Chips	Plastic Samplex Tray			1253.57
Core Chips	Plastic Samplex Tray			1254.45
Core Chips	Plastic Samplex Tray			1255.43
Core Chips	Plastic Samplex Tray			1256.45
Core Chips	Plastic Samplex Tray			1257.5
Core Chips	Plastic Samplex Tray			1258.53
Core Chips	Plastic Samplex Tray			1259.34
Core Chips	Plastic Samplex Tray			1260.48
Core Chips	Plastic Samplex Tray			1261.58
Core Chips	Plastic Samplex Tray			1262.45
Core Chips	Plastic Samplex Tray			1263.5
Core Chips	Plastic Samplex Tray			1264.47
Core Chips	Plastic Samplex Tray			1265.44
Core Chips	Plastic Samplex Tray			1266.41
Core Chips	Plastic Samplex Tray			1267.54
Core Chips	Plastic Samplex Tray			1268.48
Core Chips	Plastic Samplex Tray			1269.54
Core Chips	Plastic Samplex Tray			1270.48
Core Chips	Plastic Samplex Tray			1271.44
Core Chips	Plastic Samplex Tray			1272.57
Core Chips	Plastic Samplex Tray			1273.4
Core Chips	Plastic Samplex Tray			1274.52
Core Chips	Plastic Samplex Tray			1275.5
Core Chips	Plastic Samplex Tray			1276.64
Core Chips	Plastic Samplex Tray			1277.46
Core Chips	Plastic Samplex Tray			1278.57



Core Chips	Plastic Samplex Tray			1279.44
Core Chips	Plastic Samplex Tray			1280.53
Core Chips	Plastic Samplex Tray			1281.6
Core Chips	Plastic Samplex Tray			1282.21
Core Chips	Plastic Samplex Tray			1283.22
Core Chips	Plastic Samplex Tray			1284.21
Core Chips	Plastic Samplex Tray			1285.22
Core Chips	Plastic Samplex Tray			1286.44
Core Chips	Plastic Samplex Tray			1287.45
Core Chips	Plastic Samplex Tray			1288.51
Core Chips	Plastic Samplex Tray			1289.62
Core Chips	Plastic Samplex Tray			1290.57
Core Chips	Plastic Samplex Tray			1291.43
Core Chips	Plastic Samplex Tray			1292.45
Core Chips	Plastic Samplex Tray			1293.44
Core Chips	Plastic Samplex Tray			1294.47
Core Chips	Plastic Samplex Tray			1295.43
Core Chips	Plastic Samplex Tray			1296.53
Core Chips	Plastic Samplex Tray			1297.6
Core Chips	Plastic Samplex Tray			1298.5
Core Chips	Plastic Samplex Tray			1299.52
Core Chips	Plastic Samplex Tray			1300.54
Core Chips	Plastic Samplex Tray			1301.54
Core Chips	Plastic Samplex Tray			1302.45
Core Chips	Plastic Samplex Tray			1303.34
Core Chips	Plastic Samplex Tray			1304.4
Core Chips	Plastic Samplex Tray			1305.5
Core Chips	Plastic Samplex Tray			1306.58
Core Chips	Plastic Samplex Tray			1307.55
Core Chips	Plastic Samplex Tray			1308.44
Core Chips	Plastic Samplex Tray			1309.47
Core Chips	Plastic Samplex Tray			13310.51
Core Chips	Plastic Samplex Tray			1311.42
Core Chips	Plastic Samplex Tray			1312.4
Core Chips	Plastic Samplex Tray			1313.46
Core Chips	Plastic Samplex Tray			1314.52
Core Chips	Plastic Samplex Tray			1315.54
Core Chips	Plastic Samplex Tray			1316.46
Core Chips	Plastic Samplex Tray			1317.45
Core Chips	Plastic Samplex Tray			1318.48
Core Chips	Plastic Samplex Tray			1319.42
Core Chips	Plastic Samplex Tray			1320.48
Core Chips	Plastic Samplex Tray			1321.58



DOCUMENT:	T3-WCR-1503
REVISION:	B
PAGE:	Page 23 of 34

Core Chips	Plastic Samplex Tray			1322.47
Core Chips	Plastic Samplex Tray			1323.48
Core Chips	Plastic Samplex Tray			1324.58
Core Chips	Plastic Samplex Tray			1325.48
Core Chips	Plastic Samplex Tray			1326.46
Core Chips	Plastic Samplex Tray			1327.53
Core Chips	Plastic Samplex Tray			1328.56
Core Chips	Plastic Samplex Tray			404.00
Core Chips	Plastic Samplex Tray			1,244.66
Core Chips	Plastic Samplex Tray			1329.47
Core Chips	Plastic Samplex Tray			1330.52
Core Chips	Plastic Samplex Tray			1331.52
Core Chips	Plastic Samplex Tray			1332.55
Core Chips	Plastic Samplex Tray			1333.52
Core Chips	Plastic Samplex Tray			1334.4
Core Chips	Plastic Samplex Tray			1338.48
Core Chips	Plastic Samplex Tray			1339.47
Core Chips	Plastic Samplex Tray			1340.6
Core Chips	Plastic Samplex Tray			1341.55
Core Chips	Plastic Samplex Tray			1342.53
Core Chips	Plastic Samplex Tray			1343.49
Core Chips	Plastic Samplex Tray			1344.57
Core Chips	Plastic Samplex Tray			1345.5
Core Chips	Plastic Samplex Tray			1346.44
Core Chips	Plastic Samplex Tray			1347.52
Core Chips	Plastic Samplex Tray			1348.42
Core Chips	Plastic Samplex Tray			1349.51
Core Chips	Plastic Samplex Tray			1350.57
Core Chips	Plastic Samplex Tray			1351.54
Core Chips	Plastic Samplex Tray			1352.48
Core Chips	Plastic Samplex Tray			1353.46
Core Chips	Plastic Samplex Tray			1354.59
Core Chips	Plastic Samplex Tray			1355.48
Core Chips	Plastic Samplex Tray			1356.54
Core Chips	Plastic Samplex Tray			1357.51
Core Chips	Plastic Samplex Tray			1358.5
Core Chips	Plastic Samplex Tray			1359.42
Core Chips	Plastic Samplex Tray			1360.63
Core Chips	Plastic Samplex Tray			1361.47
Core Chips	Plastic Samplex Tray			1362.4
Core Chips	Plastic Samplex Tray			1363.5
Core Chips	Plastic Samplex Tray			1364.42
Core Chips	Plastic Samplex Tray			1365.51



Core Chips	Plastic Samplex Tray			1366.57
Core Chips	Plastic Samplex Tray			1367.45
Core Chips	Plastic Samplex Tray			1368.52
Core Chips	Plastic Samplex Tray			1369.49
Core Chips	Plastic Samplex Tray			1370.62
Core Chips	Plastic Samplex Tray			1371.52
Core Chips	Plastic Samplex Tray			1372.53
Core Chips	Plastic Samplex Tray			1373.48
Core Chips	Plastic Samplex Tray			1374.49
Core Chips	Plastic Samplex Tray			1375.52
Core Chips	Plastic Samplex Tray			1376.52
Core Chips	Plastic Samplex Tray			1377.54
Core Chips	Plastic Samplex Tray			1378.63
Core Chips	Plastic Samplex Tray			1379.48
Core Chips	Plastic Samplex Tray			1380.46
Core Chips	Plastic Samplex Tray			1381.53
Core Chips	Plastic Samplex Tray			1382.47
Core Chips	Plastic Samplex Tray			1383.42
Core Chips	Plastic Samplex Tray			1384.5
Core Chips	Plastic Samplex Tray			1385.5
Core Chips	Plastic Samplex Tray			1386.5
Core Chips	Plastic Samplex Tray			1387.51
Core Chips	Plastic Samplex Tray			1388.48
Core Chips	Plastic Samplex Tray			1389.5
Core Chips	Plastic Samplex Tray			1390.54
Core Chips	Plastic Samplex Tray			1391.53
Core Chips	Plastic Samplex Tray			1392.59
Core Chips	Plastic Samplex Tray			1393.49
Core Chips	Plastic Samplex Tray			1394.53
Core Chips	Plastic Samplex Tray			1395.46
Core Chips	Plastic Samplex Tray			1396.5
Core Chips	Plastic Samplex Tray			1397.51
Core Chips	Plastic Samplex Tray			1398.5
Core Chips	Plastic Samplex Tray			1399.45
Core Chips	Plastic Samplex Tray			1400.47
Core Chips	Plastic Samplex Tray			1401.55
Core Chips	Plastic Samplex Tray			1402.45
Core Chips	Plastic Samplex Tray			1403.5
Core Chips	Plastic Samplex Tray			1404.58
Core Chips	Plastic Samplex Tray			1405.57
Core Chips	Plastic Samplex Tray			1406.47
Core Chips	Plastic Samplex Tray			1407.5
Core Chips	Plastic Samplex Tray			1408.53



Core Chips	Plastic Samplex Tray			1409.53
Core Chips	Plastic Samplex Tray			1410.56
Core Chips	Plastic Samplex Tray			1411.43
Core Chips	Plastic Samplex Tray			1,416.69
Core Chips	Plastic Samplex Tray			1412.6
Core Chips	Plastic Samplex Tray			1413.53
Core Chips	Plastic Samplex Tray			1414.5
Core Chips	Plastic Samplex Tray			1415.54
Core Chips	Plastic Samplex Tray			1416.68
Core Chips	Plastic Samplex Tray			1417.42
Core Chips	Plastic Samplex Tray			1418.5
Core Chips	Plastic Samplex Tray			1419.5
Core Chips	Plastic Samplex Tray			1420.42
Core Chips	Plastic Samplex Tray			1421.47
Core Chips	Plastic Samplex Tray			1422.48
Core Chips	Plastic Samplex Tray			1423.44
Core Chips	Plastic Samplex Tray			1424.41
Core Chips	Plastic Samplex Tray			1425.4
Core Chips	Plastic Samplex Tray			1426.73
Core Chips	Plastic Samplex Tray			1427.58
Core Chips	Plastic Samplex Tray			1,426.32
Core Chips	Plastic Samplex Tray			1428.45
Core Chips	Plastic Samplex Tray			1429.53
Core Chips	Plastic Samplex Tray			1430.55
Core Chips	Plastic Samplex Tray			1431.41
Core Chips	Plastic Samplex Tray			1432.57
Core Chips	Plastic Samplex Tray			1433.47
Core Chips	Plastic Samplex Tray			1434.39
Core Chips	Plastic Samplex Tray			1435.45
Core Chips	Plastic Samplex Tray			1436.5
Core Chips	Plastic Samplex Tray			1437.4
Core Chips	Plastic Samplex Tray			1438.6
Core Chips	Plastic Samplex Tray			1439.5
Core Chips	Plastic Samplex Tray			1440.4
Core Chips	Plastic Samplex Tray			1441.42
Core Chips	Plastic Samplex Tray			1442.56
Core Chips	Plastic Samplex Tray			delete
Core Chips	Plastic Samplex Tray			1,442.96
Core Chips	Plastic Samplex Tray			1443.56
Core Chips	Plastic Samplex Tray			1444.4
Core Chips	Plastic Samplex Tray			1445.5
Core Chips	Plastic Samplex Tray			1446.6
Core Chips	Plastic Samplex Tray			1447.5



DOCUMENT:	T3-WCR-1503
REVISION:	B
PAGE:	Page 26 of 34

Core Chips	Plastic Samplex Tray		1448.41
Core Chips	Plastic Samplex Tray		1449.44
Core Chips	Plastic Samplex Tray		1450.57
Core Chips	Plastic Samplex Tray		1551.42
Core Chips	Plastic Samplex Tray		1452.54
Core Chips	Plastic Samplex Tray		1453.44
Core Chips	Plastic Samplex Tray		1454.49
Core Chips	Plastic Samplex Tray		1455.45
Core Chips	Plastic Samplex Tray		1456.6
Core Chips	Plastic Samplex Tray		1457.44
Core Chips	Plastic Samplex Tray		1458.54
Core Chips	Plastic Samplex Tray		1559.49
Core Chips	Plastic Samplex Tray		1460.49
Core Chips	Plastic Samplex Tray		1461.54
Core Chips	Plastic Samplex Tray		1462.52
Core Chips	Plastic Samplex Tray		1463.51
Core Chips	Plastic Samplex Tray		1464.51
Core Chips	Plastic Samplex Tray		1465.48
Core Chips	Plastic Samplex Tray		1466.53
Core Chips	Plastic Samplex Tray		1467.55
Core Chips	Plastic Samplex Tray		1468.48
Core Chips	Plastic Samplex Tray		1469.44
Core Chips	Plastic Samplex Tray		1470.57
Core Chips	Plastic Samplex Tray		1471.5
Core Chips	Plastic Samplex Tray		1472.59
Core Chips	Plastic Samplex Tray		1473.5
Core Chips	Plastic Samplex Tray		1474.51
Core Chips	Plastic Samplex Tray		1475.49
Core Chips	Plastic Samplex Tray		1476.46
Core Chips	Plastic Samplex Tray		1477.49
Core Chips	Plastic Samplex Tray		1478.5
Core Chips	Plastic Samplex Tray		1479.51
Core Chips	Plastic Samplex Tray		1480.52
Core Chips	Plastic Samplex Tray		1481.53
Core Chips	Plastic Samplex Tray		1482.39
Core Chips	Plastic Samplex Tray		1483.51
Core Chips	Plastic Samplex Tray		1484.55
Core Chips	Plastic Samplex Tray		1485.49
Core Chips	Plastic Samplex Tray		1486.52
Core Chips	Plastic Samplex Tray		1487.59
Core Chips	Plastic Samplex Tray		1488.6
Core Chips	Plastic Samplex Tray		1489.6
Core Chips	Plastic Samplex Tray		1490.63



DOCUMENT:	T3-WCR-1503
REVISION:	B
PAGE:	Page 27 of 34

Core Chips	Plastic Samplex Tray		1491.67
Core Chips	Plastic Samplex Tray		1492.54
Core Chips	Plastic Samplex Tray		1493.51
Core Chips	Plastic Samplex Tray		1464.5
Core Chips	Plastic Samplex Tray		1495.56
Core Chips	Plastic Samplex Tray		1496.42
Core Chips	Plastic Samplex Tray		1497.42
Core Chips	Plastic Samplex Tray		1498.5
Core Chips	Plastic Samplex Tray		1499.71
Core Chips	Plastic Samplex Tray		1500.43
Core Chips	Plastic Samplex Tray		1501.51
Core Chips	Plastic Samplex Tray		1502.56
Core Chips	Plastic Samplex Tray		1503.35
Core Chips	Plastic Samplex Tray		1504.5
Core Chips	Plastic Samplex Tray		1505.61
Core Chips	Plastic Samplex Tray		1506.49
Core Chips	Plastic Samplex Tray		1507.32
Core Chips	Plastic Samplex Tray		1508.39
Core Chips	Plastic Samplex Tray		1509.48
Core Chips	Plastic Samplex Tray		1510.52
Core Chips	Plastic Samplex Tray		1511.46
Core Chips	Plastic Samplex Tray		1512.55
Core Chips	Plastic Samplex Tray		1513.6
Core Chips	Plastic Samplex Tray		1514.3
Core Chips	Plastic Samplex Tray		1515.51
Core Chips	Plastic Samplex Tray		1516.4
Core Chips	Plastic Samplex Tray		1517.41
Core Chips	Plastic Samplex Tray		1518.57
Core Chips	Plastic Samplex Tray		1519.39
Core Chips	Plastic Samplex Tray		1520.61
Core Chips	Plastic Samplex Tray		1521.47
Core Chips	Plastic Samplex Tray		1522.47
Core Chips	Plastic Samplex Tray		1523.5
Core Chips	Plastic Samplex Tray		1524.56
Core Chips	Plastic Samplex Tray		1525.34
Core Chips	Plastic Samplex Tray		1526.37
Core Chips	Plastic Samplex Tray		1527.45
Core Chips	Plastic Samplex Tray		1528.51
Core Chips	Plastic Samplex Tray		1529.58
Core Chips	Plastic Samplex Tray		1530.57
Core Chips	Plastic Samplex Tray		1531.51
Core Chips	Plastic Samplex Tray		1532.5
Core Chips	Plastic Samplex Tray		1533.56



Core Chips	Plastic Samplex Tray			1534.4
Core Chips	Plastic Samplex Tray			1535.63
Core Chips	Plastic Samplex Tray			1536.58
Core Chips	Plastic Samplex Tray			1537.4
Core Chips	Plastic Samplex Tray			1538.51
Core Chips	Plastic Samplex Tray			1539.4
Core Chips	Plastic Samplex Tray			1540.44
Core Chips	Plastic Samplex Tray			1541.36
Core Chips	Plastic Samplex Tray			1542.5
Core Chips	Plastic Samplex Tray			1543.56
Core Chips	Plastic Samplex Tray			1544.35
Core Chips	Plastic Samplex Tray			1545.67
Core Chips	Plastic Samplex Tray			1546.57
Core Chips	Plastic Samplex Tray			1547.47
Core Chips	Plastic Samplex Tray			1,547.73
Core Chips	Plastic Samplex Tray			1548.59
Core Chips	Plastic Samplex Tray			1549.66
Core Chips	Plastic Samplex Tray			1,549.92
Core Chips	Plastic Samplex Tray			1550.48
Core Chips	Plastic Samplex Tray			1551.52
Core Chips	Plastic Samplex Tray			1552.47
Core Chips	Plastic Samplex Tray			1553.47
Core Chips	Plastic Samplex Tray			1554.51
Core Chips	Plastic Samplex Tray			1555.5
Core Chips	Plastic Samplex Tray			1556.56
Core Chips	Plastic Samplex Tray			1557.5
Core Chips	Plastic Samplex Tray			1,557.80
Core Chips	Plastic Samplex Tray			1558.51
Core Chips	Plastic Samplex Tray			1559.49
Core Chips	Plastic Samplex Tray			1560.66
Core Chips	Plastic Samplex Tray			1561.44
Core Chips	Plastic Samplex Tray			1562.46
Core Chips	Plastic Samplex Tray			1563.56
Core Chips	Plastic Samplex Tray			1564.49
Core Chips	Plastic Samplex Tray			1565.53
Core Chips	Plastic Samplex Tray			1566.4
Core Chips	Plastic Samplex Tray			1567.55
Core Chips	Plastic Samplex Tray			1568.51
Core Chips	Plastic Samplex Tray			1569.64
Core Chips	Plastic Samplex Tray			1570.46
Core Chips	Plastic Samplex Tray			1571.57
Core Chips	Plastic Samplex Tray			1,570.89
Core Chips	Plastic Samplex Tray			1572.5



DOCUMENT:	T3-WCR-1503
REVISION:	B
PAGE:	Page 29 of 34

Core Chips	Plastic Samplex Tray		1573.62
Core Chips	Plastic Samplex Tray		1574.49
Core Chips	Plastic Samplex Tray		1575.5
Core Chips	Plastic Samplex Tray		1576.58
Core Chips	Plastic Samplex Tray		1577.51
Core Chips	Plastic Samplex Tray		1578.54
Core Chips	Plastic Samplex Tray		1,577.66
Core Chips	Plastic Samplex Tray		1579.49
Core Chips	Plastic Samplex Tray		1580.52
Core Chips	Plastic Samplex Tray		1581.5
Core Chips	Plastic Samplex Tray		1582.59
Core Chips	Plastic Samplex Tray		1583.47
Core Chips	Plastic Samplex Tray		1584.5
Core Chips	Plastic Samplex Tray		1585.53
Core Chips	Plastic Samplex Tray		1586.59
Core Chips	Plastic Samplex Tray		1587.44
Core Chips	Plastic Samplex Tray		1588.53
Core Chips	Plastic Samplex Tray		1589.51
Core Chips	Plastic Samplex Tray		1,588.30
Core Chips	Plastic Samplex Tray		1590.41
Core Chips	Plastic Samplex Tray		1591.5
Core Chips	Plastic Samplex Tray		1592.47
Core Chips	Plastic Samplex Tray		1593.58
Core Chips	Plastic Samplex Tray		1594.42
Core Chips	Plastic Samplex Tray		1595.52
Core Chips	Plastic Samplex Tray		1596.5
Core Chips	Plastic Samplex Tray		1597.6
Core Chips	Plastic Samplex Tray		1598.48
Core Chips	Plastic Samplex Tray		1599.41
Core Chips	Plastic Samplex Tray		1600.54
Core Chips	Plastic Samplex Tray		1601.56
Core Chips	Plastic Samplex Tray		1602.58
Core Chips	Plastic Samplex Tray		1603.54
Core Chips	Plastic Samplex Tray		1604.44
Core Chips	Plastic Samplex Tray		1605.46
Core Chips	Plastic Samplex Tray		1606.52
Core Chips	Plastic Samplex Tray		1607.56
Core Chips	Plastic Samplex Tray		1608.41
Core Chips	Plastic Samplex Tray		1609.53
Core Chips	Plastic Samplex Tray		1610.5
Core Chips	Plastic Samplex Tray		1611.57
Core Chips	Plastic Samplex Tray		1612.55
Core Chips	Plastic Samplex Tray		1613.6



Core Chips	Plastic Samplex Tray			1614.48
Core Chips	Plastic Samplex Tray			1615.58
Core Chips	Plastic Samplex Tray			1616.54
Core Chips	Plastic Samplex Tray			1617.57
Core Chips	Plastic Samplex Tray			1618.44
Core Chips	Plastic Samplex Tray			1619.53
Core Chips	Plastic Samplex Tray			1620.5
Core Chips	Plastic Samplex Tray			1621.5
Core Chips	Plastic Samplex Tray			1622.41
Core Chips	Plastic Samplex Tray			1623.46
Core Chips	Plastic Samplex Tray			1624.46
Core Chips	Plastic Samplex Tray			1625.36
Core Chips	Plastic Samplex Tray			1626.6
Core Chips	Plastic Samplex Tray			1627.6
Core Chips	Plastic Samplex Tray			1628.49
Core Chips	Plastic Samplex Tray			1629.62
Core Chips	Plastic Samplex Tray			1630.49
Core Chips	Plastic Samplex Tray			1631.42
Core Chips	Plastic Samplex Tray			1632.67
Core Chips	Plastic Samplex Tray			1633.49
Core Chips	Plastic Samplex Tray			1634.48
Core Chips	Plastic Samplex Tray			1635.45
Core Chips	Plastic Samplex Tray			1636.49
Core Chips	Plastic Samplex Tray			1637.47
Core Chips	Plastic Samplex Tray			1,638.36
Core Chips	Plastic Samplex Tray			1,639.50
Core Chips	Plastic Samplex Tray			1,640.54
Core Chips	Plastic Samplex Tray			1,641.49
Core Chips	Plastic Samplex Tray			1,642.54
Core Chips	Plastic Samplex Tray			1,643.56
Core Chips	Plastic Samplex Tray			1,644.43
Core Chips	Plastic Samplex Tray			1,645.42
Core Chips	Plastic Samplex Tray			1,646.42
Core Chips	Plastic Samplex Tray			1,647.47

APPENDIX 2. DEVIATION SURVEY

Pangaea Resources Tarlee-S3 Deviation Survey Results			
Depth	Date/Time	Deviation	Azimuth
[mRT]		[deg]	[deg]
350.6	21-Aug-14 - 16:30	0.5	N/A
554.6	25-Aug-14 - 19:30	1.7	N/A
752.6	26-Aug-14 - 14:45	2.0	N/A
1117.2	28-Aug-14 - 14:45	3.4	N/A
1366.2	04-Sep-14 - 05:00	3.3	N/A

A Wireline Logging Deviation Survey using the Borehole Navigator Tool was performed. Data can be found in **Enclosure 1**. From this survey at the Wireline Total Depth (TD) of 1653.00 m (MD) and 1651.62 m (TVD) the Axial Coordinates (N/-S, E/-W) are (-36.53, -16.23) from the target origin at (0, 0).



**BASIC WELL COMPLETION REPORT
EP-167
TARLEE-S3**

DOCUMENT:	T3-WCR-1503
REVISION:	B
PAGE:	Page 32 of 34

APPENDIX 3. BIT RECORD

TARLEE-S3 BIT RECORD

Bit Number	Size (in)	Make	Type	IADC Code or Specification	Serial Number	Nozzles	Depth In (m)	Depth Out (m)	Total Meters
1	8-1/2	HALCO	Hammer	n/a	n/a	3 x 1.25"	3.9	21.8	17.9
2	12-1/4	Smith	Tri-cone	n/a	PT3306	2 x 18, 1 x 16	3.9	21.8	17.9
3	8-1/2	HALCO	Hammer	n/a	n/a	n/a	21.8	113.7	91.9
4	6-1/8	Smith	Tri-cone	617	PX5415	3 x 16	113.7	699.8	586.1
5	6-1/8	Smith	Tri-cone	617	PS7118	3 x 16	699.8	786.7	86.9
6	3-7/8	Varel	PDC	M223	6015204	4 x 11	770.9	1101.8	331.0
7	HQ (3.78")	Hardcore	Diamond	Series 10	132268	n/a	1101.8	1287.0	185.2
8	HQ (3.78")	Hardcore	Diamond	Series 8	133219	n/a	1287.0	1297.2	10.2
9	HQ (3.78")	Hardcore	7 Step	Surface Set	n/a	n/a	1297.2	1330.7	33.5
10	HQ (3.78")	Hardcore	Diamond	Series 9	132275	n/a	1330.7	1410.2	79.5
11	HQ (3.78")	Hardcore	Diamond	12-14	133233	n/a	1410.2	1650.6	240.4



BASIC WELL COMPLETION REPORT

EP-167

TARLEE-S3

DOCUMENT:	T3-WCR-1503
REVISION:	B
PAGE:	Page 33 of 34

APPENDIX 4. FLUID RECORD

TARLEE-S3 FLUID PROPERTIES SUMMARY							
DATE	DEPTH (M)	WEIGHT (PPG)	Vis (sec)	pH	Fluid Loss (mls)	OPERATION	MUD USED
22/08/14	110.0	n/a	n/a	n/a	n/a	Air Drilling	Super Foam
24/08/14	143.7	n/a	n/a	n/a	n/a	Air Drilling	Super Foam
25/08/14	402.1	n/a	n/a	n/a	n/a	Air Drilling	Super Foam
26/08/14	644.3	n/a	n/a	n/a	n/a	Air Drilling	Super Foam
27/08/14	699.8	8.60	34	9.0	14	WBM Drilling	KCl, Pac-R, Penetrol Xtra, Clay Doctor
28/08/14	786.7	8.70	36	9.0	n/a	WBM Drilling	KCl, Pac-R, Soda Ash, Clay Doctor
01/09/14	909.2	9.00	36	11.0	n/a	WBM Drilling	KCl, Pac-R
02/09/14	1078.7	9.00	35	9.5	n/a	WBM Drilling	KCl, Pac-R, Clay Doctor, Gran Bentonite
03/09/14	1105.2	9.00	41	9.0	n/a	WBM Drilling	KCl, Pac-R, Penetrol Xtra
04/09/14	1153.2	9.00	39	8.5	n/a	Coring	KCl, Penetrol Xtra, Soda Ash, Clay Doctor, Deep Drill 5000
05/09/14	1219.2	9.00	38	8.5	n/a	Coring	KCl, Soda Ash, Deep Drill 5000
06/09/14	1276.2	9.05	37	9.0	n/a	Coring	KCl, Pac-R, Soda Ash, Clay Doctor
07/09/14	1291.2	9.05	39	9.0	n/a	Coring	Soda Ash, Deep Drill 5000
08/09/14	1309.2	9.05	40	9.0	n/a	Coring	Pac-R, Penetrol Xtra
09/09/14	1330.7	9.00	39	8.5	n/a	Coring	Pac-R
10/09/14	1343.0	9.00	38	9.5	8.5	Coring	Pac-R, Soda Ash, Frac Seal
11/09/14	1366.2	9.00	40	9.5	n/a	Coring	Pac-R, Soda Ash
12/09/14	1407.6	9.00	39	9.5	8.5	Coring	Deep Drill 5000
13/09/14	1427.7	9.00	42	9.5	8.0	Coring	Pac-R, Clay Doctor, Deep Drill 5000
14/09/14	1442.9	9.00	42	9.5	8.0	Coring	Pac-R, Clay Doctor, Deep Drill 5000
15/09/14	1477.2	9.00	43	9.5	8.0	Coring	KCl, Pac-R, Clay Doctor
16/09/14	1531.9	9.00	40	9.5	8.5	Coring	KCl, Super Foam, Clay Doctor, Deep Drill 5000
17/09/14	1579.2	9.00	40	9.5	n/a	Coring	Pac-R, Soda Ash



BASIC WELL COMPLETION REPORT
EP-167
TARLEE-S3

DOCUMENT:	T3-WCR-1503
REVISION:	B
PAGE:	Page 34 of 34

18/09/14	1621.0	9.10	41	8.5	n/a	Coring	Pac-R, Soda Ash
19/09/14	1650.6	9.10	40	9.0	n/a	Coring	Pac-R, Soda Ash