

DRILL HOLE DATABASE

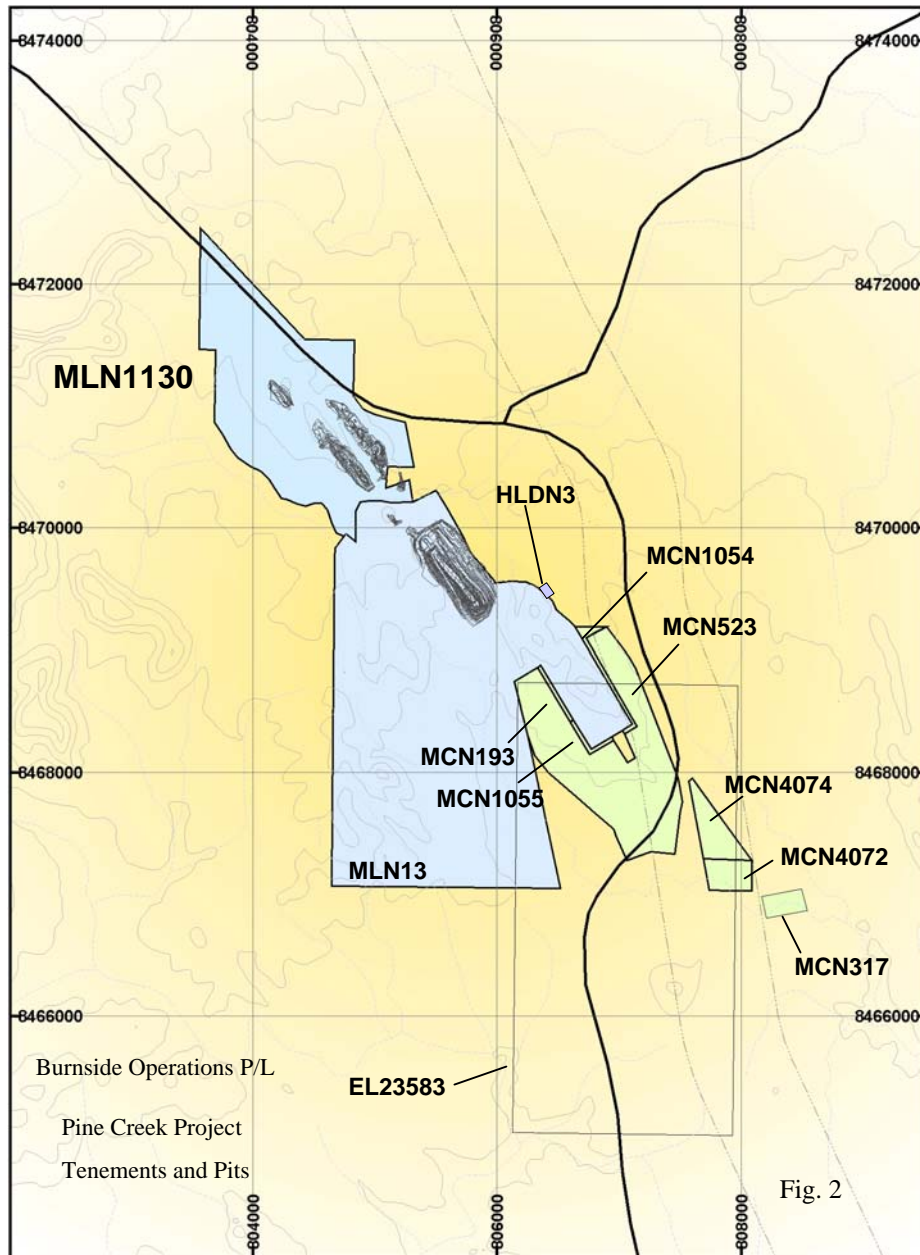
- database now contains 2387 drillhole collars and surveys with AMG grid conversions
- assay results located and entered for 2263 holes
- geological log data located and entered for 1028 holes
- Millwood prospect is now the only prospect missing significant digital drill hole data

GIS DATABASE

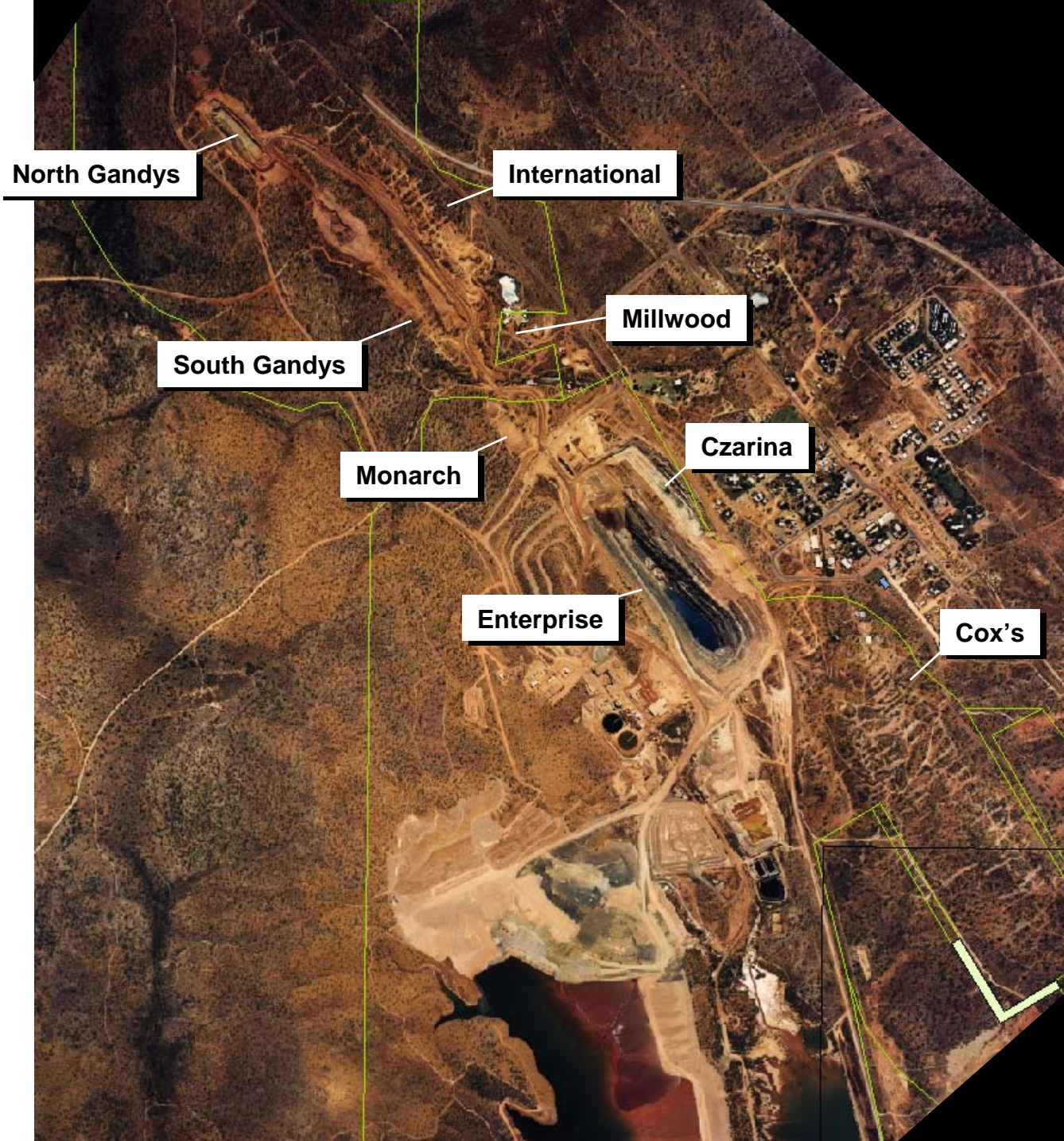
- final pit surveys for all pits imported in AMG and local grids
- regional geology digitised and imported to GIS
- roads, tenements and topo contour string files imported
- historical workings and prospects digitised and imported
- aerial photography and Landsat images scanned and imported
- drill hole collars imported in AMG and local grids

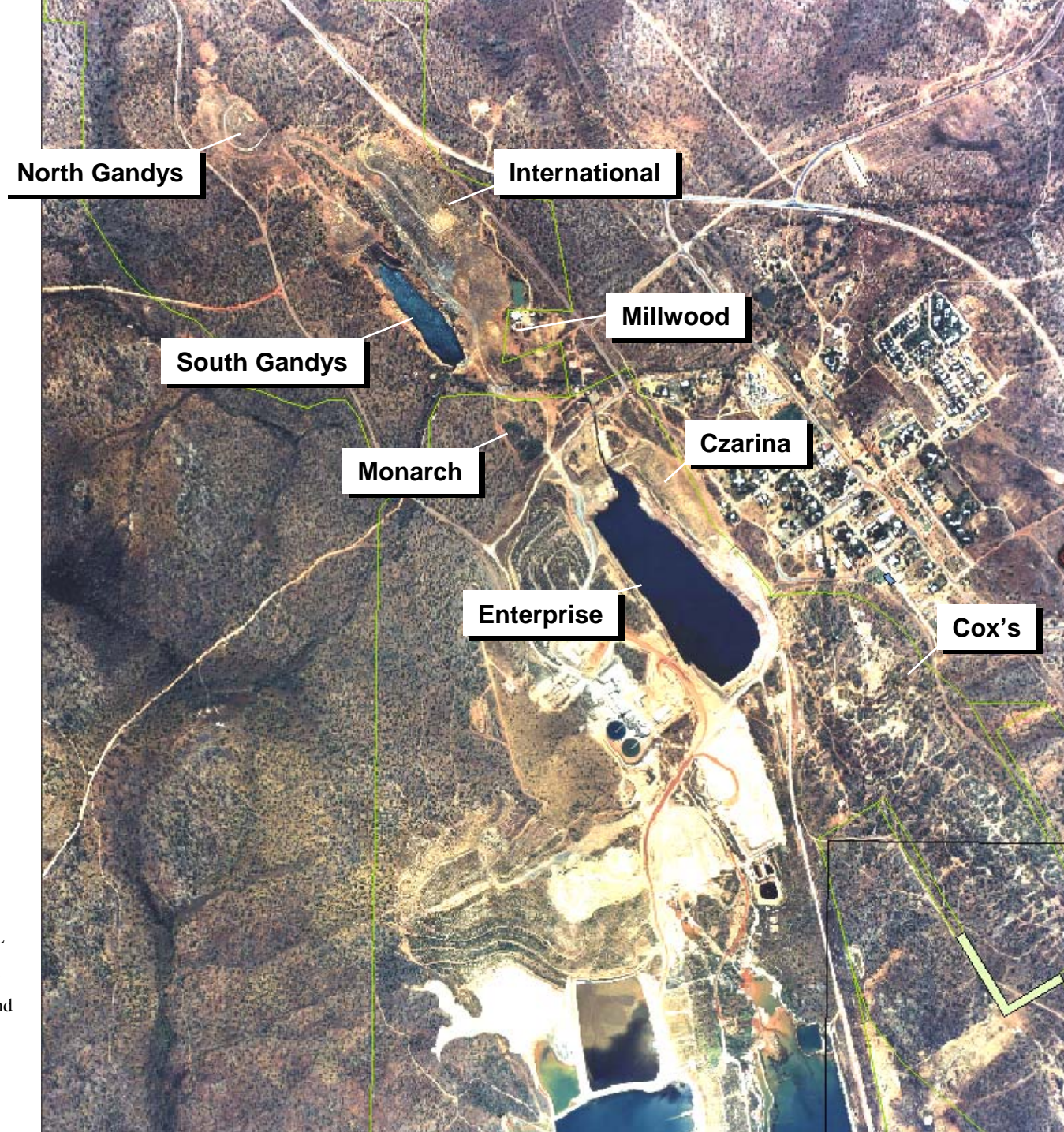
GEMCOM DATABASE & MODELLING

- Gemcom Database Created And Validated From Master Access Database
- Geological models created For:
 - Gandys Hill Greywacke (GHG)
 - Gandys Silt Horizon (GSH)
 - Lower Mine Greywacke (LMG)
 - Nodular Chert Horizon (ENC)
- Grade shells (0.5 g/t Au Cutoff) Created For:
 - South Gandys Deposit
 - North Gandys Deposit
 - Enterprise Deposit



1993

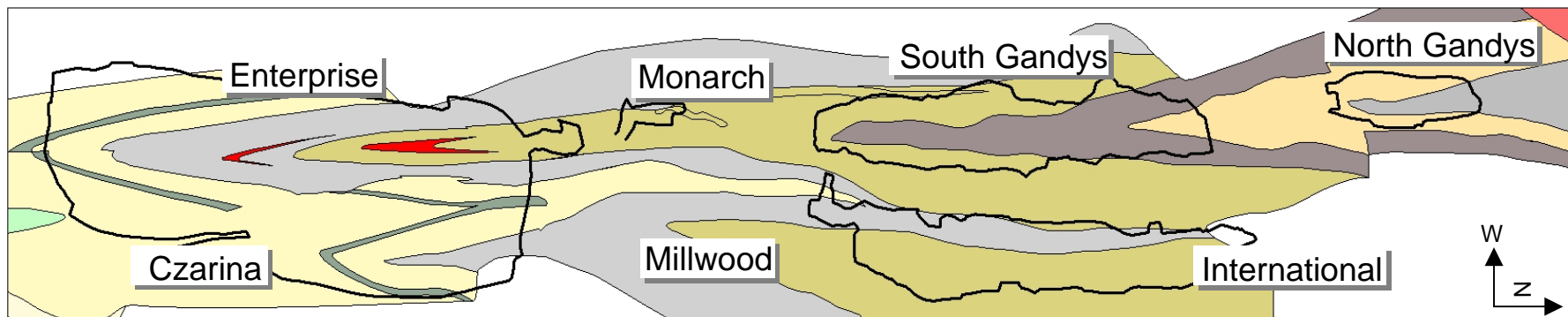




1995

Fig. 3

Burnside Operations P/L
Pine Creek Project Area
Photo in 1995 of Pits and
Position of Townsite

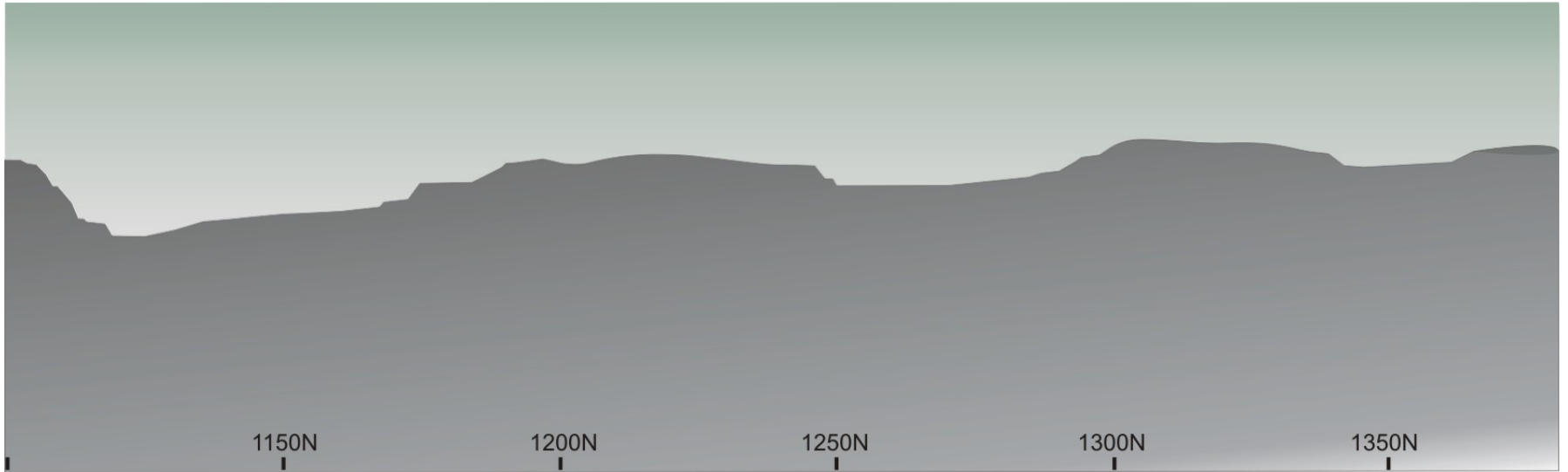
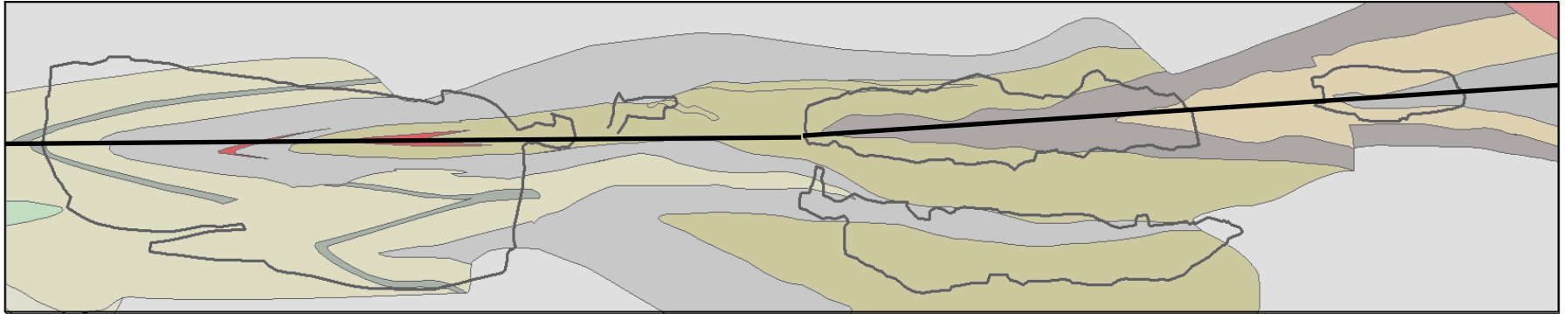


Production Summary

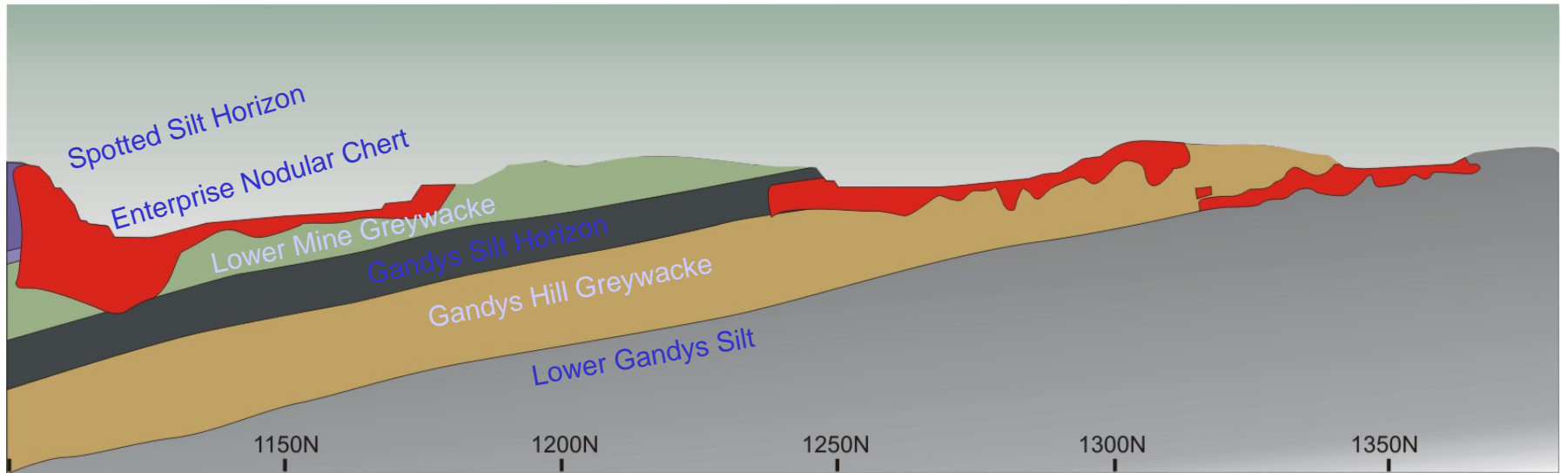
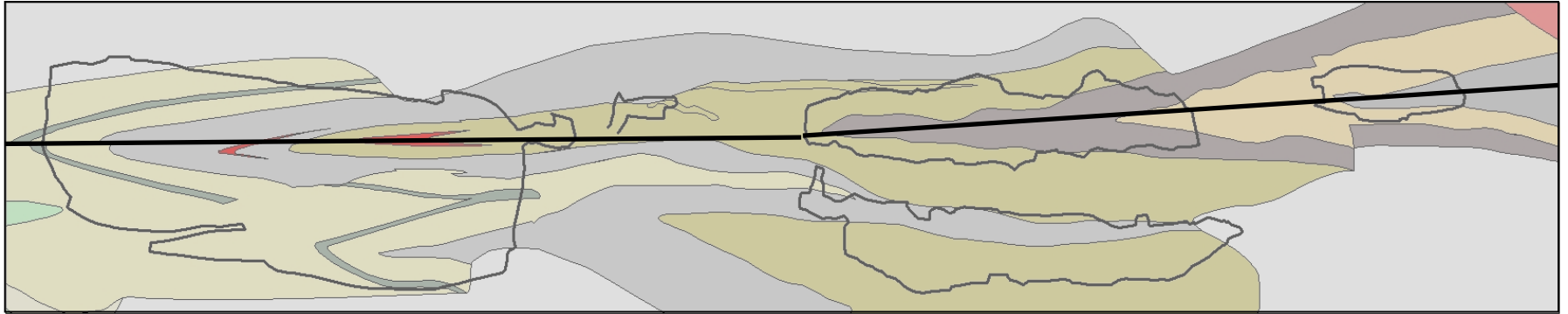
PIT	TONNES	GRADE	REC OUNCES	PERIOD	DURATION
ENTERPRISE/CZARINA	9,087,784	2.59	597,894	1985-93	8 years
NORTH GANDYS	276,646	1.94	13,633	1993	4 months
SOUTH GANDYS	1,004,384	1.97	50,247	1993-1994	1 year
INTERNATIONAL	744,977	1.62	30,681	1993-1994	1 year
MILLWOOD/MONARCH/LOW GRADE	1,163,706	1.58	81,197		
TOTAL	12,277,497	2.37	773,652		

HEAP LEACH	1,100,067	1.81	19,500	1989/1991	3 years
------------	-----------	------	--------	-----------	---------

Separate figures for Millwod and Monarch not located
 Recoverd ounces based on average 79% mill recovery
 Heap leach and low grade sources unknown



Longitudinal Section

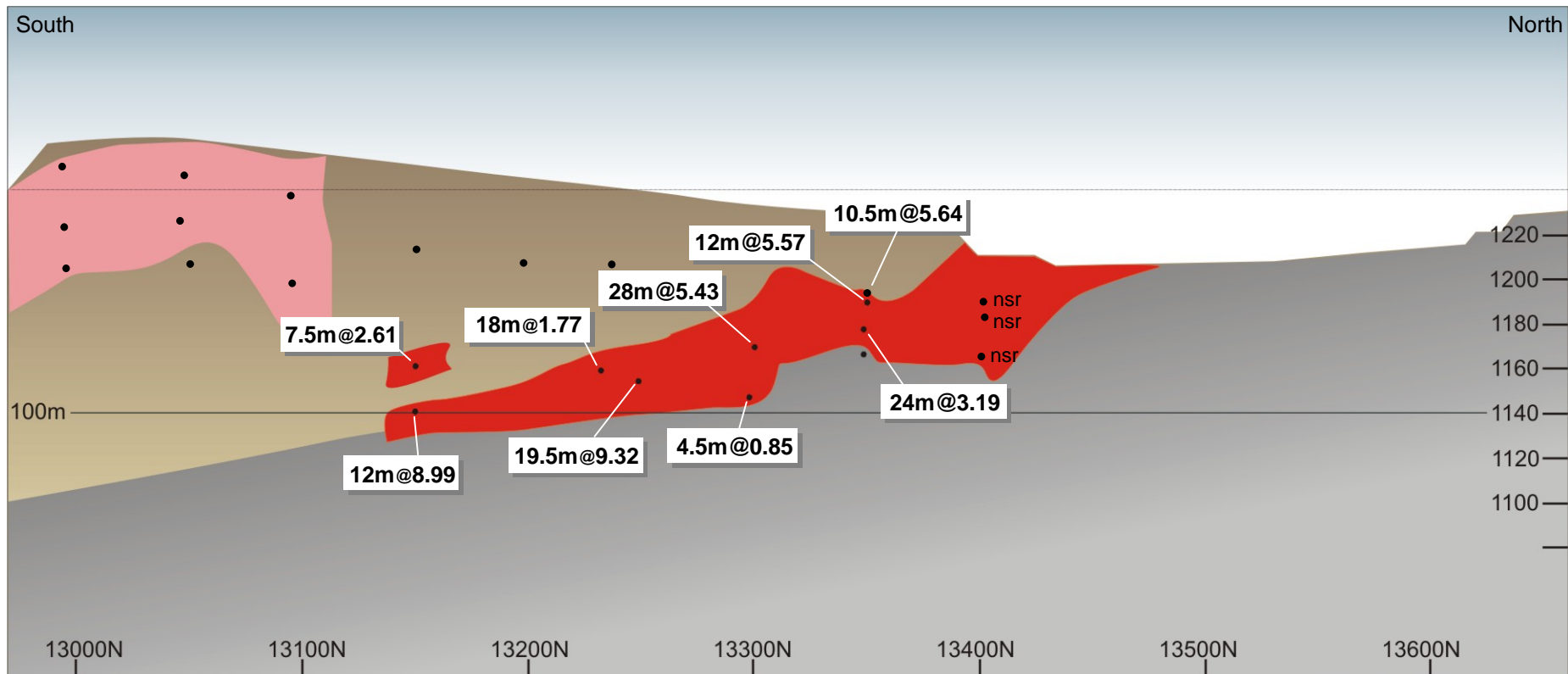


Longitudinal Section

Burnside Operations P/L
Geology and Mineralisation
North Gandy's to Enterprise Pit

Fig. 4

North Gandys



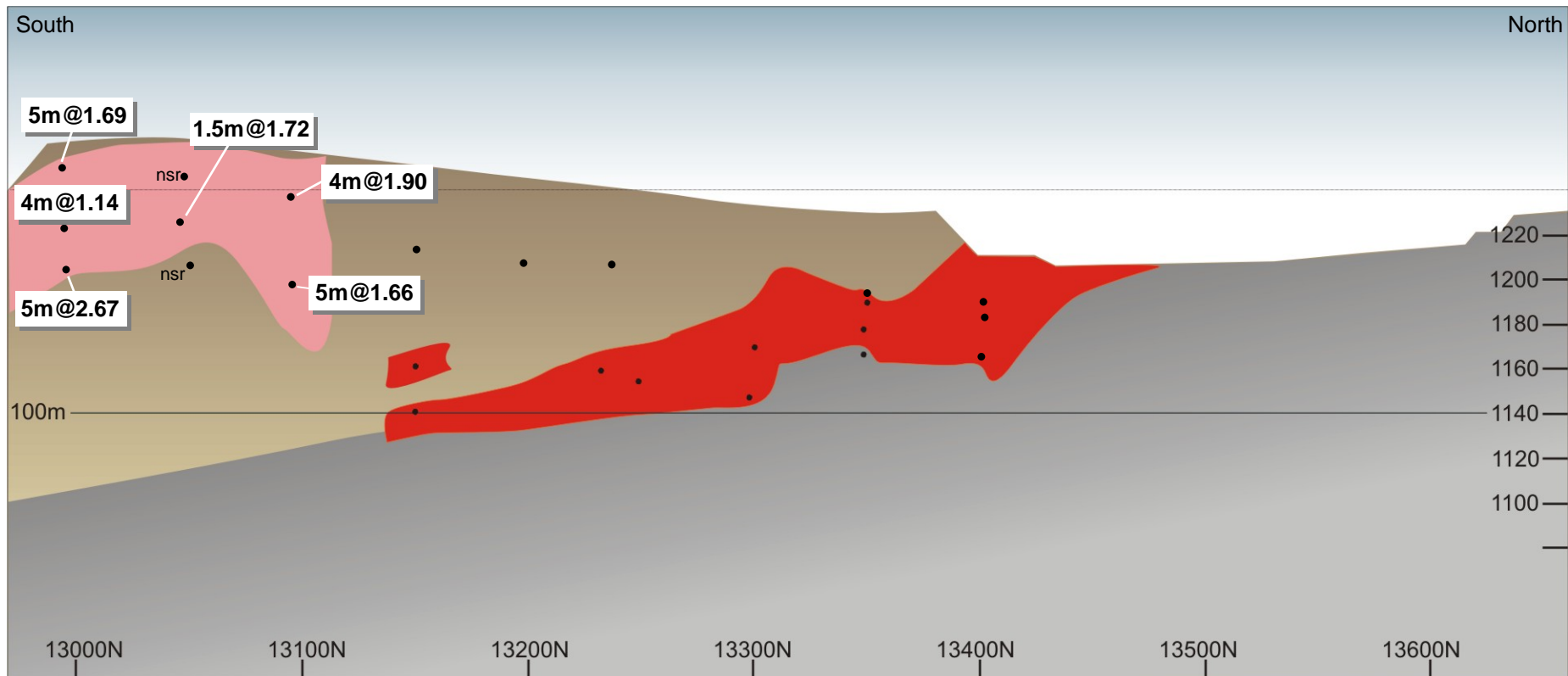
Longitudinal Section

Burnside Operations P/L

North Gandys Pit Long Section

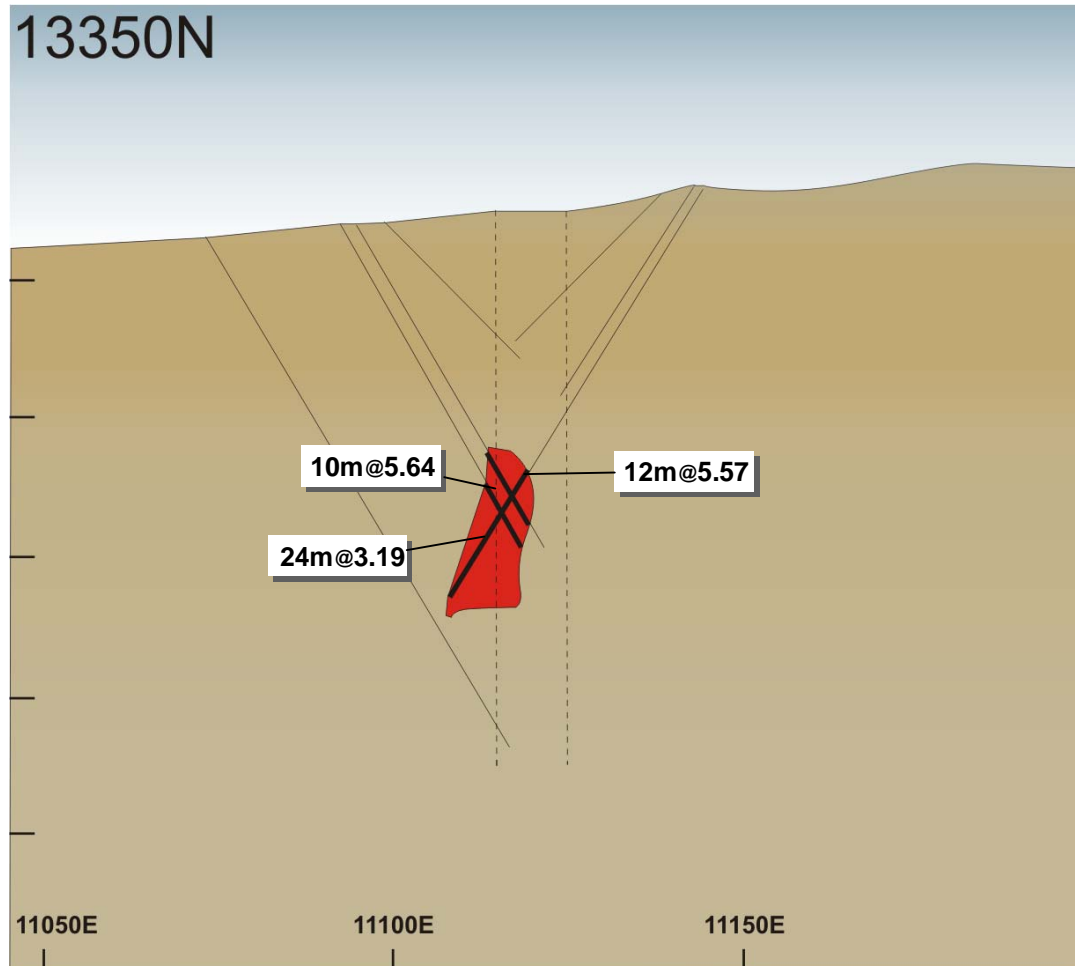
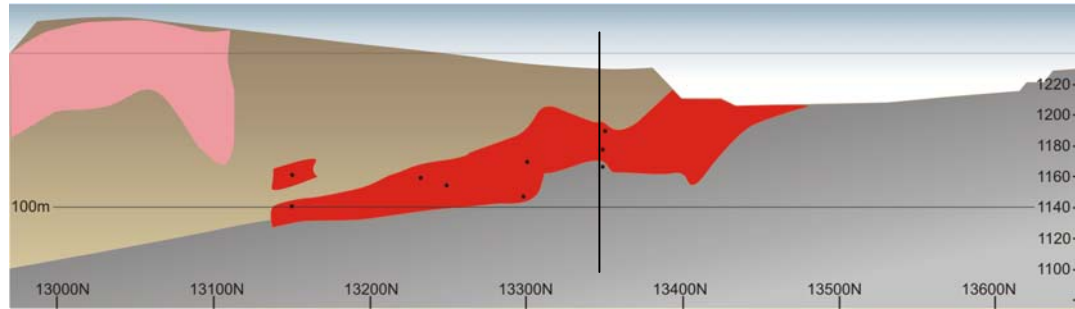
Residual Gold Mineralisation Fig. 5

North Gandys

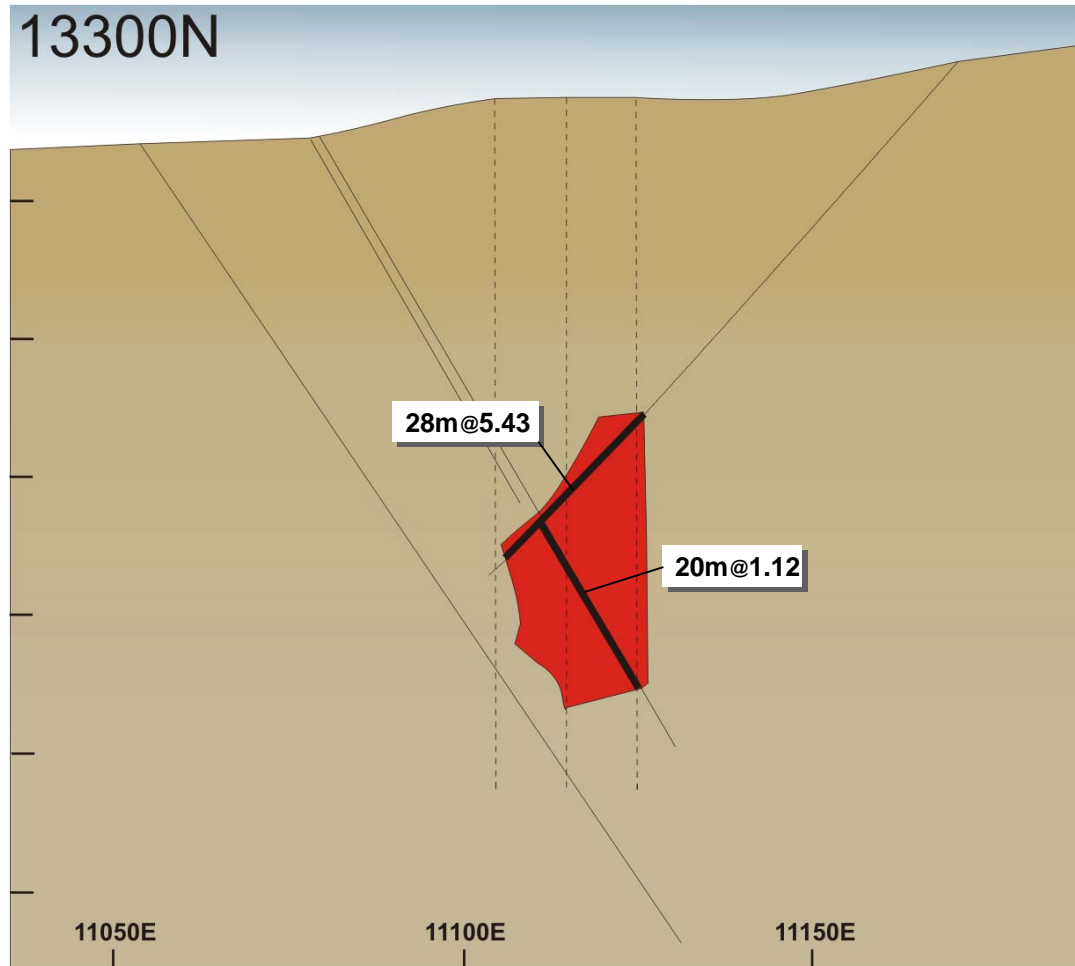
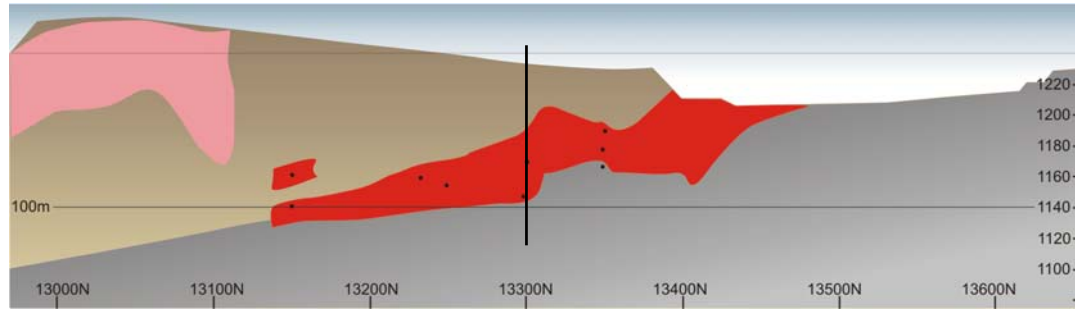


Longitudinal Section

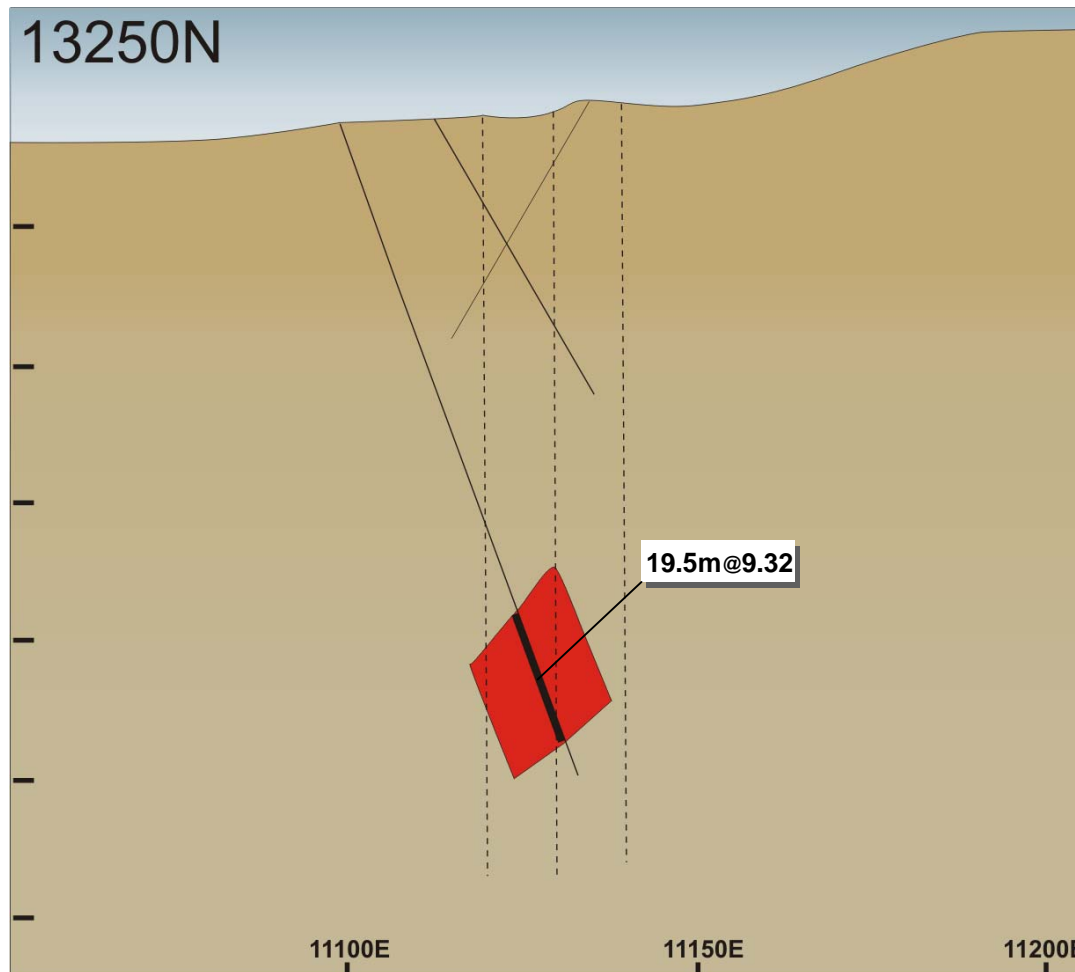
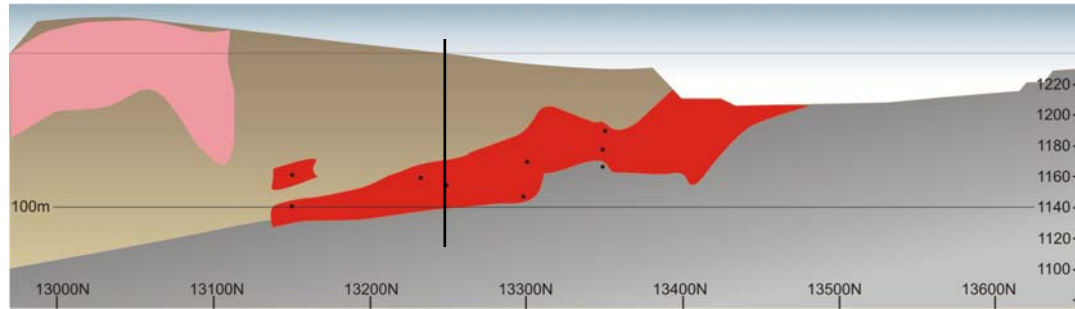
North Gandys



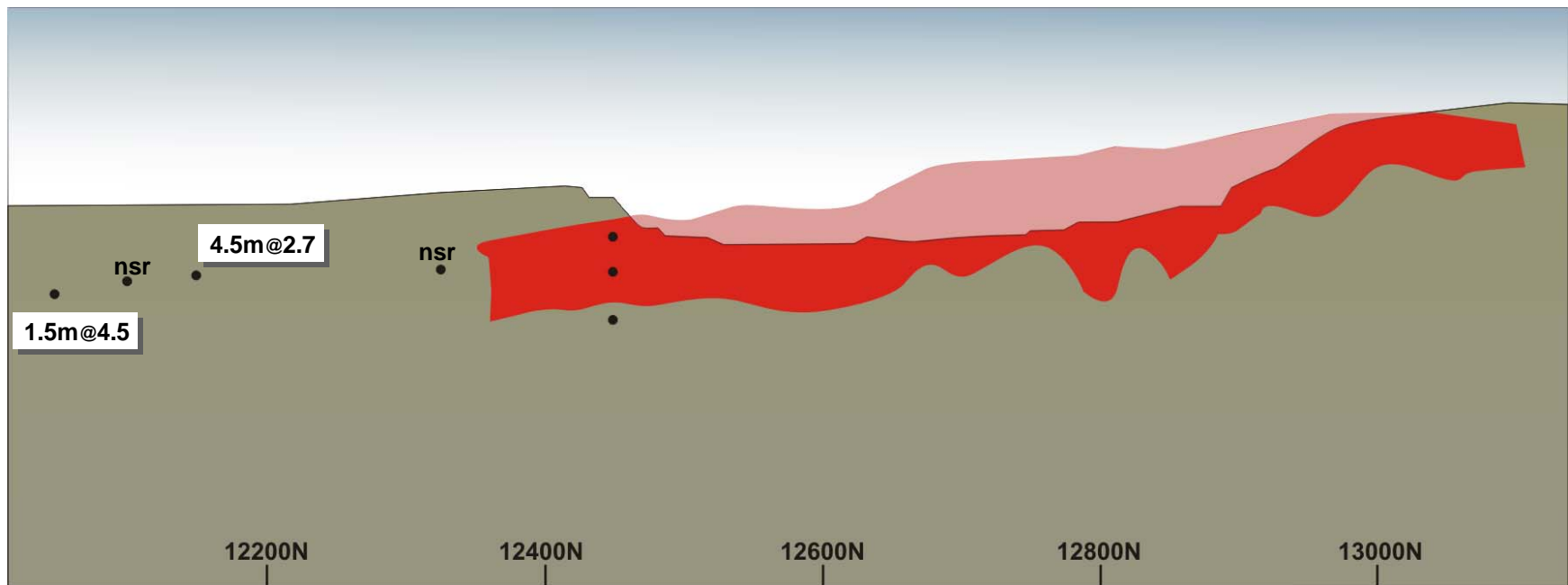
North Gandys



North Gandys



South Gandys



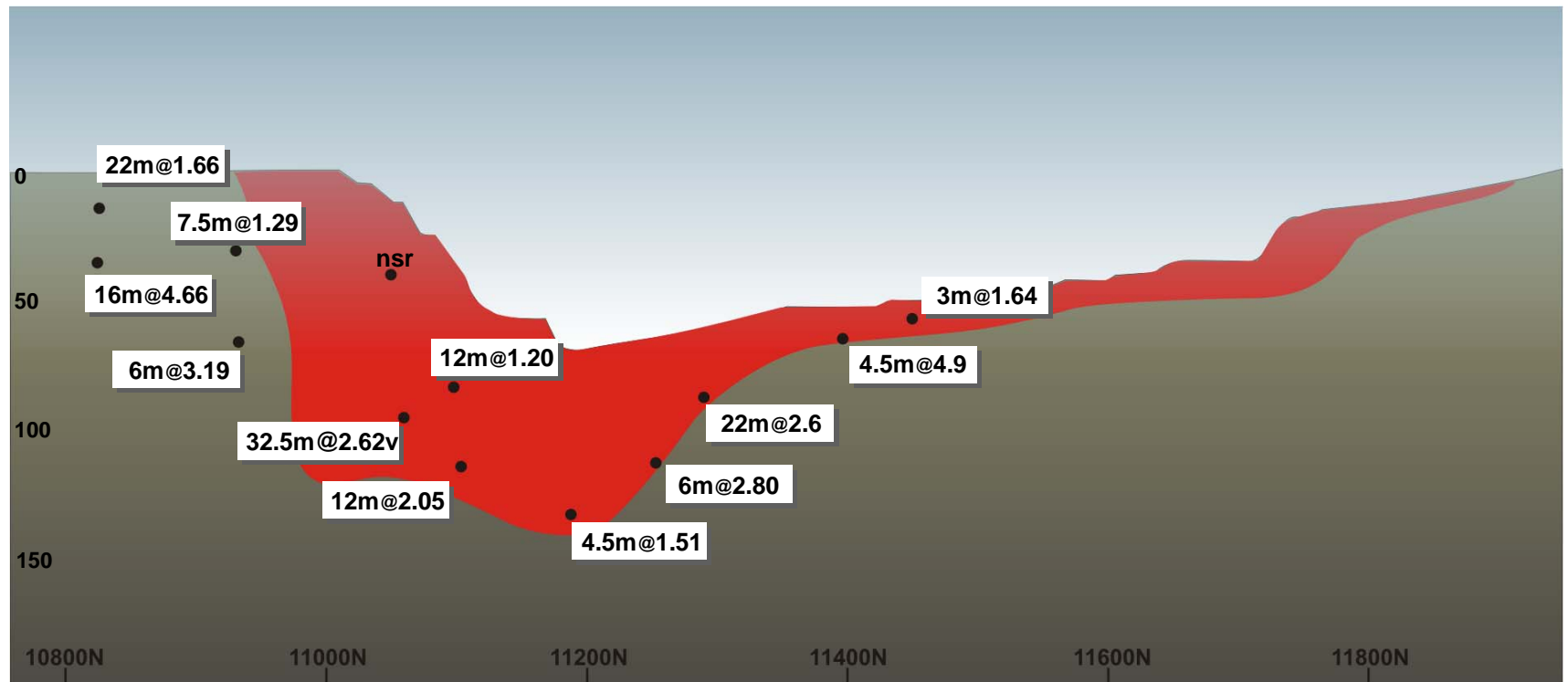
Longitudinal Section

Burnside Operations P/L

South Gandys Pit

Residual Gold Mineralisation Fig.6

1.5m@4.5



Longitudinal Section

EXPLORATION PROSPECT TARGETING AND RANKING

NORTH GANDYS SHOOT SOUTH EXTENSION

- 200m of poorly tested strike with several medium to high grade intersections.
- Potential for resource of the order of 200000 tonnes at up to 5 g/t.

SOUTH GANDYS SOUTHERN EXTENSION

- 300m of strike south of the South Gandys Pit with several narrow sub 1 g/t Au intercepts
- Has not been drilled extensively below 30m vertical depth
- Potential for mineralisation on axial plane of Enterprise Anticline

CZARINA PIT REMNANT MINERALISATION

There is low grade remnant mineralisation below the base of the Czarina Pit with existing comprehensive drilling coverage. Downgraded potential due to the backfilling of the pit. Requires modelling of mineralisation to assess potential.

ENTERPRISE DEEPS

The southern plunge of the Enterprise shoot was tested with eight diamond holes at depth with generally low grade and narrow mineralisation. The holes failed to lift in elevation intersecting the target at depths 40-120m below the pit. Limited potential exists for remnant mineralisation immediately below the pit.

COXS DEPOSIT

RGC calculated a reserve at Coxs of 190000 tonnes at 1.37 g/t Au to 40m vertical depth. Looks to be a very marginal target with poor mineralisation controls. Requires modelling with existing comprehensive data.

