

FINAL REPORT

EXPLORATION LICENCE 29739

MacArthur River

Map Sheet: 1 :250,000 AUVERGNE(SD52-15)

CHINA AUSTRALIA LAND RESOURCES PTY LTD

ACN 154 511 298

September. 2015

TABLE OF CONTENTS

1.0 SUMMARY	1
2. LOCATION & ACCESS	1
3. TENEMENT STATUS.....	2
4. REGIONAL GEOLOGY.....	2
5.0 PREVIOUS EXPLORATION.....	3
5.1 Preliminary geological and geophysical studies	Error! Bookmark not defined.
5.2 Previous exploration summary	Error! Bookmark not defined.
6.0 EXPLORATION COMPLETED DURING 2013-2015	3
7 EXPENDITURE.....	4
8 Conclusions AND Recommendations	4
9 References.....	4

1.0 SUMMARY

The objective of the exploration on EL29739 was to explore base metal. During 27th May 2014 and 26th May 2015, about 5.5km route geological survey and 35 XRF samples were completed. CALR's geologist spent much time on indoor research, while the result is not good enough for next investment. So we decide to give up the exploration licence.

2. LOCATION & ACCESS

Exploration Licence 29739 is situated on the Auvergne (SD52-15) 1:250,000 geological mapsheet in the Northern Territory. It is located around 350 kilometres southwest of Katherine. A location map is provided as Figure 1.

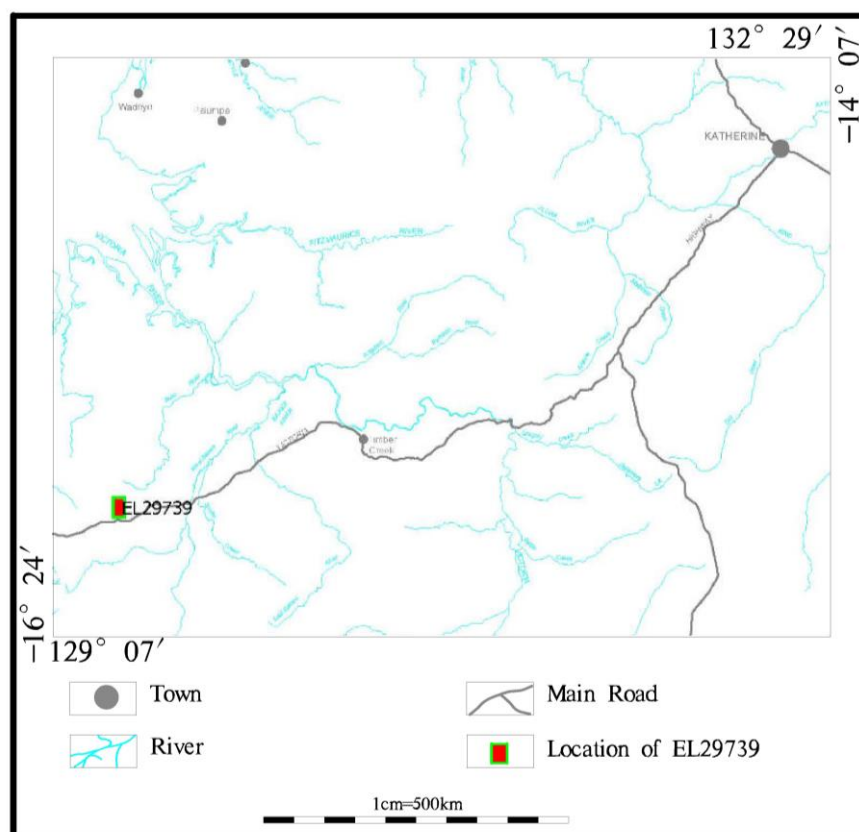


Figure 1 Location map of EL29739

3. TENEMENT STATUS

EL29739 consists of 15 sub-blocks, and was granted to China Australia Land Resources Pty Ltd on 27th May 2013 for a period of six years. Licence details for EL29739 are outlined in Table 1 below.

Table 1: Licence Details for EL29739

Name	Status	Grant Date	Expiry Date	Current Blocks	Area (sq km)	Holder	Percentage
EL29739	granted	27/05/2013	26/05/2019	15	49.54	China Australia Land Resources Pty Ltd	100

4. REGIONAL GEOLOGY

The exploration licence is located within the geomorphic region referred to as the Pinkerton Ranges fault that consists of high level, sands and soil covers most of the south area.

The oldest rocks that crop out over the licence are Palaeoproterozoic sediments of the Duerdin Group. Mining area exposed the main formation of the Pad, Pap, Poi, Paa(The main lithology is sandstone). Attitude of stratum in the area mainly north west direction, there is a north east direction lateral plunging anticline. The main structures for regional Pinkerton Ranges fault, and its small Angle intersection of secondary fracture.

5.0 PREVIOUS EXPLORATION

According to data collected, Along the north east structural belt there are many mineral point such as uranium tin , copper, lead zinc, gold etc. There are two barite mineral point within exploration licence 29739. Barite mineralization body, 150 meters length, 1.5 meters thick, the mineralization body is layered, the surrounding rock is carbonatite, for type stratabound ore body, is looking for stratabound lead-zinc deposits prospecting marks of the bed. Northern territory geological survey ever measured the gravity and aviation magnetic. EL29739 is locate at low gravity anomaly area and the center of high magnetic anomaly area. So the fault area is the potential area for Pb-Zn-Ag deposit.

6.0 EXPLORATION COMPLETED DURING 2013-2015

During the reporting period about 5.5km route geology survey was completed. Within the mining area in the process of route geology survey, we observed and qualified the lithology and structure of the area carefully, in the potential mineralization area. Especially in the centre of anticline, via observing those structure's relationship, We think that the area has good metallogenic conditions and prospecting perspective, that an analogy to ShuiKouShan lead-zinc mine field in China.

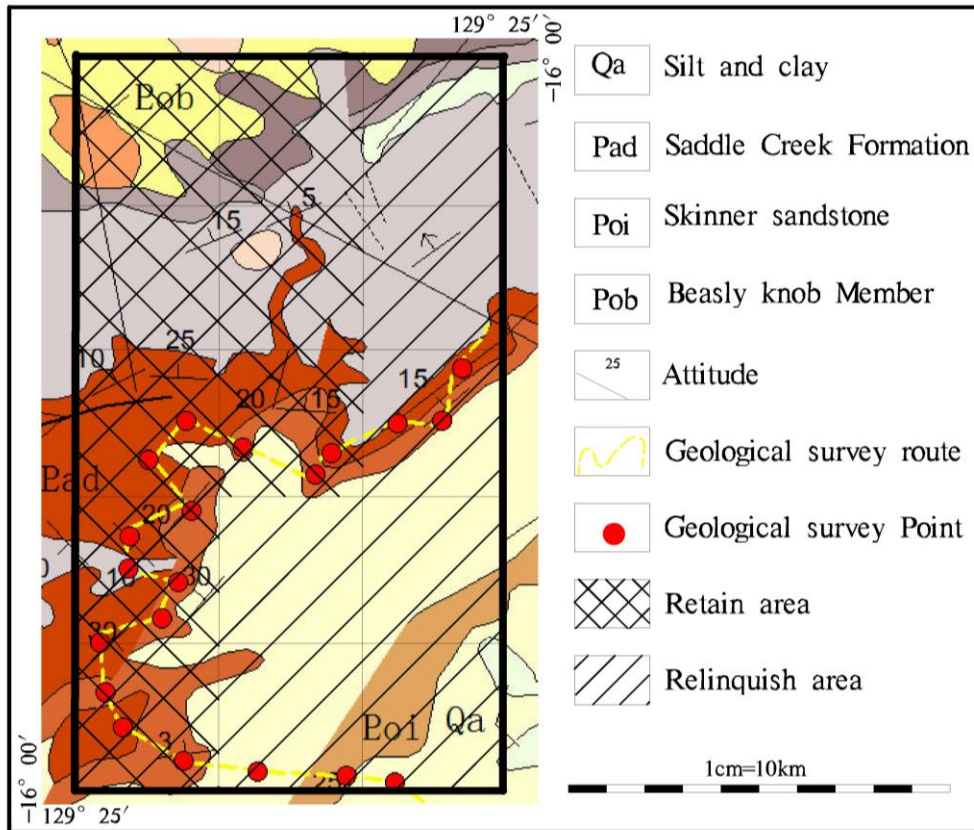


FIG.2 Rout geological survey map of EL29739

7 EXPENDITURE

Exploration expenditure on the tenement from 27th May 2014 to 26th May 2015 totally was \$ 14200.

8 Conclusions AND Recommendations

Via outdoor route survey and indoor research, CALR decide to abandon this exploration licence.

9 References

Department of Mines and Energy, Northern Territory Geological Survey. AUVERGNE 1:250,000 Explanatory Notes. 1991.

Copyright

© *China Australia Land Resources 2016*

This document and its contents are the copyright of China Australia Land Resources Pty Ltd. The document is for submitting to the Department of Mines and Energy of the Northern Territory, as part of the tenement reporting requirements of the *Minerals Titles Act 2010*. Any information included in this report that originates from historical reports or other sources is listed in the 'References' section at the end of this document. China Australia Land Resources Pty Ltd authorises the Department of Mines and Energy to copy and distribute the report and associated data.