



**BROWNS RANGE PROJECT  
EL25207**

**TANAMI REGION, NT**

**ANNUAL REPORT 2014**  
**FOR PERIOD 12 FEBRUARY 2013 TO 11 FEBRUARY 2014**

Terrence Jones  
Director Excalibur Mining Corporation Ltd  
April 2014

## Title Page for Reporting under the NT Mining Act

<b>Titleholder</b>	Palace Resources Limited
<b>Operator</b>	Excalibur Mining Corporation Ltd
<b>Tenement Manager</b>	M & M Walter Consulting
<b>Titles/Tenements</b>	EL 25207
<b>Mine/Project Name</b>	Brown's Range
<b>Report title including type of report and reporting period including a date</b>	Annual Report for period ending 11/02/2013
<b>Personal author</b>	Terrence Jones
<b>Corporate author</b>	Excalibur Mining Corporation Ltd
<b>Company reference number</b>	Tanami
<b>Target Commodity or Commodities</b>	Gold, base metals
<b>Date of report</b>	April 2014
<b>Datum/Zone</b>	GDA94/Zone 52
<b>250 000 K mapsheet</b>	Tanami SE 52-15
<b>100 000 K mapsheet</b>	Mallee 4759
<b>Contact details Postal address</b>	Excalibur Mining Corporation Ltd PO Box 1779 West Perth WA 6872
<b>Fax</b>	08 9486 1011
<b>Phone</b>	08 9429 2900
<b>Email for further technical details</b>	tjones@excaliburmining.com.au

**ABSTRACT**

EL25207 was granted to Palace Resources Ltd in 2007 and comprised 488 subblocks. It targeted uranium within the lower Proterozoic Tanami Group in proximity with the unconformity with the flat-lying mid-Proterozoic Gardiner Sandstone, in an area north of the Tanami-Granites Gold Fields, based on an East Alligator Valley deposit model.

Since grant the Licence area has been appropriately reduced and at the end of the reporting period comprises 54 subblocks covering only the exposed Tanami Group basement. As interest in uranium has waned in recent years, the exploration focus has changed to Tanami-style gold and base-metals and the mid-Proterozoic cover is no longer prospective.

The change of focus towards gold attracted Excalibur Mining Corporation Ltd to earn an interest in the Licence through joint venture. Having achieved a 90% interest, Excalibur has exhausted greenfields exploration funds and is currently raising working capital through a rights issue.

Apart from desktop evaluation in-house, Excalibur has not carried out any drilling programmes and will not resume exploration programmes until further capital is raised.

**COPYRIGHT**

This document and its content are the copyright of Palace Resources.

The document has been prepared by Terrence Jones, for submission to the Northern Territory Department of Mines and Energy, as part of the tenement reporting requirements as per the *Mineral Titles Act (NT)*. Any information included in the report that originates from historical reports or other sources is listed in the "References" section at the end of the document. All relevant authorisations and consents have been obtained.

Palace Resources authorise the department to copy and distribute the report and associated data.

## INTRODUCTION

Palace Resources Ltd ("Palace") applied for EL25207 ("the Licence") to secure a strike length of unconformity between lower and mid-Proterozoic rocks in the Tanami region, considered prospective for unconformity-type uranium mineralisation, akin to the East Alligator Region of NT. The majority of the Licence was dominated by the mid-Proterozoic Gardiner Sandstone flat-lying cover and although the NTGS has interpreted Tanami Group basement beneath much of this, effective exploration has been confined to the western part only where basement is exposed.

Airborne EM and radiometrics over the lower Proterozoic exposures in the west mapped out the unconformity and several carbonaceous conductors worthy of exploration. Shallow RAB drilling of a number of these EM anomalies in 2010 was inconclusive with several down-hole geochemistry anomalies unexplained.

## LOCATION

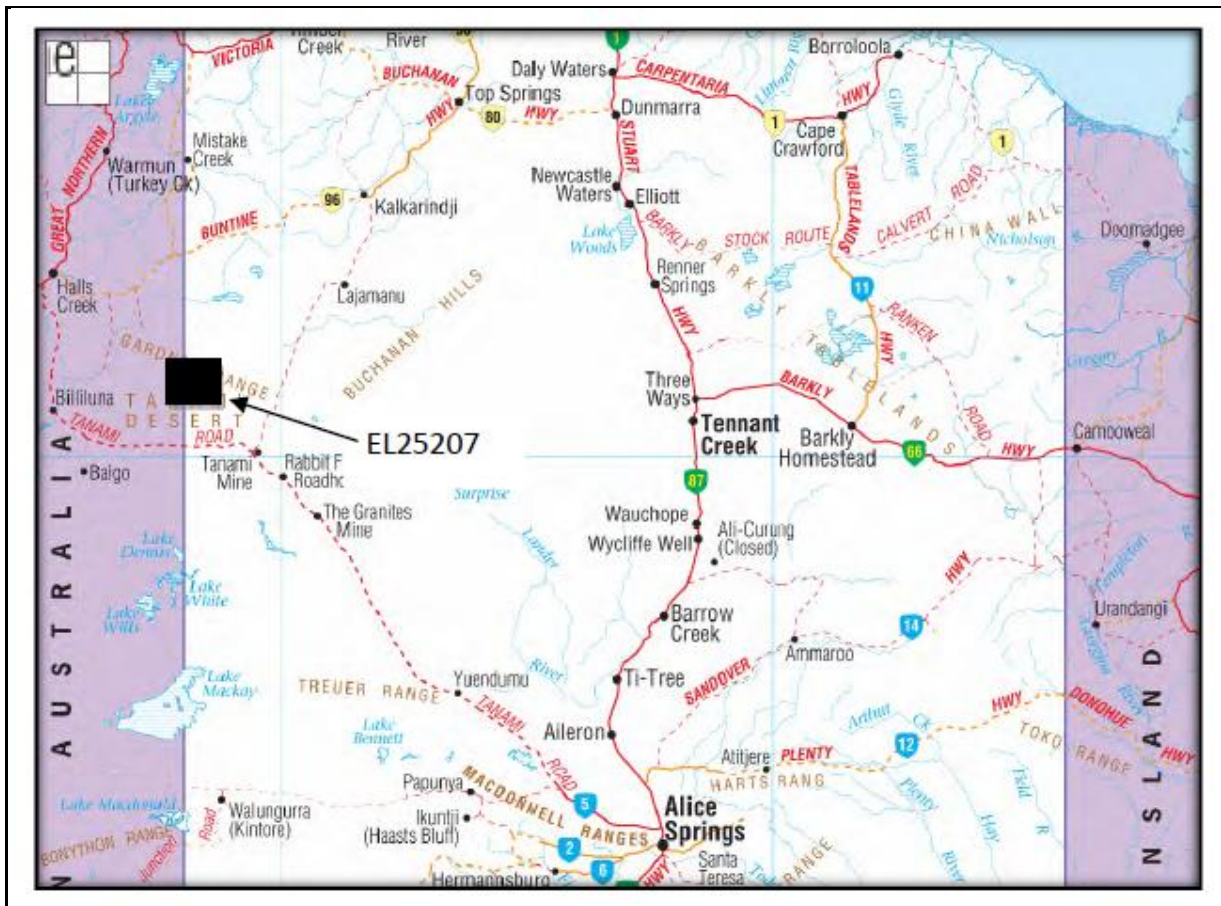


Figure 1: Licence location plan

The Licence is located 100km northwest of the Tanami Mine and 800km northwest of Alice Springs, within the Tanami Desert (Figure 1). It lies almost entirely with the Suplejack Pastoral Lease with the areas of interest some 50km west of the homestead.

Access roads from Halls Creek in the west or Alice Springs in the east are unsealed and subject to closure following wet weather.

## TENEMENT STATUS

Initially granted on 12/2/07 and comprising 488subblocks, the Licence was subsequently reduced to 244subblocks on 12/2/2011. It was due for expiry on 12 February 2013 but Palace was successful in obtaining an extension of term for a greatly reduced area of 54subblocks which covers the areas prospective for gold and base-metals.

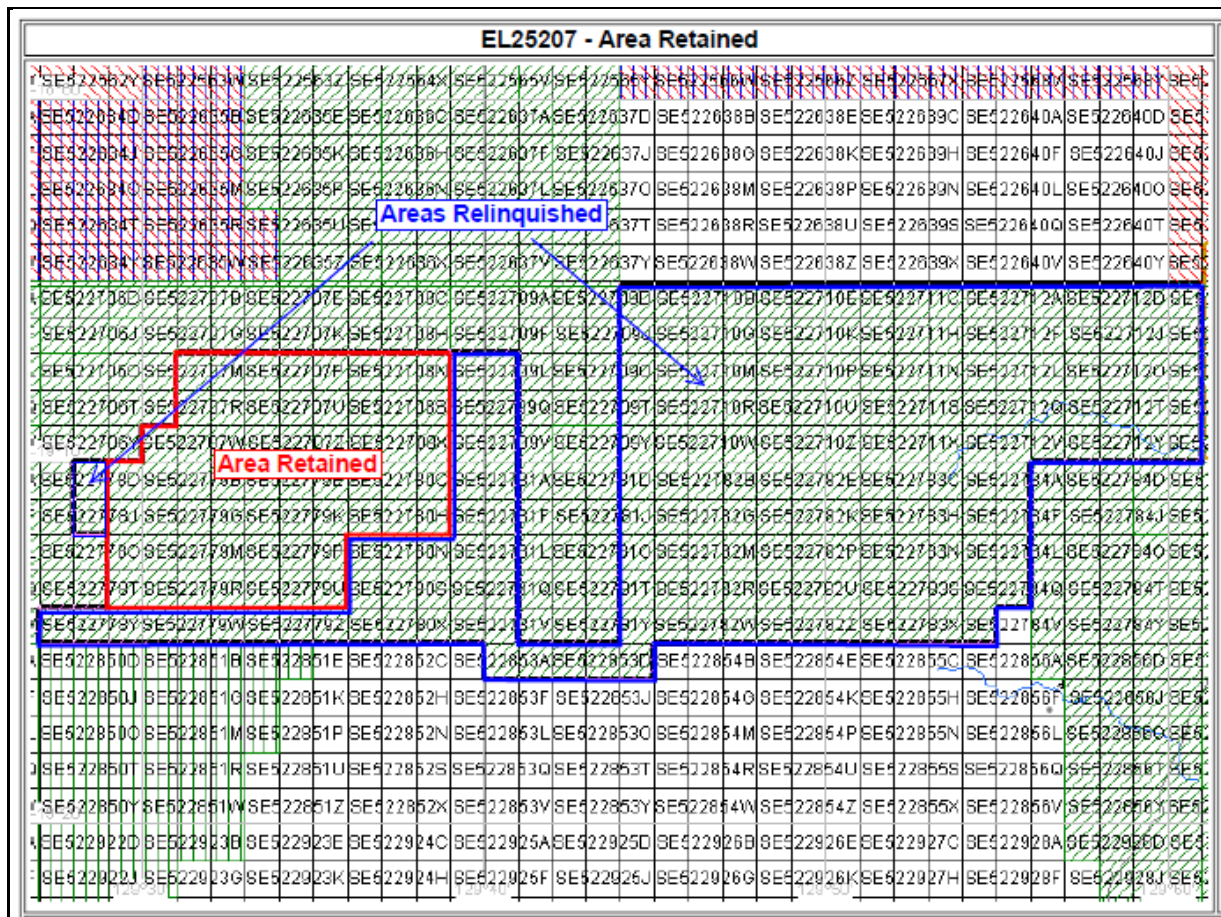


Figure 2: Licence graticules retained and relinquished at 12/2/2013

The Licence is held by Palace Resource Ltd but is subject to a joint venture with Excalibur Mining Corporation Ltd which has earned a 90% interest in the gold, uranium and base-metal rights.

## GEOLOGICAL SETTING

The Licence was applied for to cover a strike length of unconformity between the lower Proterozoic Tanami Complex and mid-Proterozoic Birrindudu Formation, a setting considered analogous to East Alligator uranium deposits.

Locally the lower Proterozoic basement comprises volcanoclastics and metasediments of the Mt Ware Group and Killi Killi Formation (blue are in Figure 3). Unconformably overlying these are the flat-lying conglomerates and sandstones of the Gardiner Sandstone member of the lower mid-Proterozoic Birrindudu Formation (pale green).



In the east of the Licence area Cambrian volcanics and sediments of the Wiso Basin further mask the prospective basement (grey).

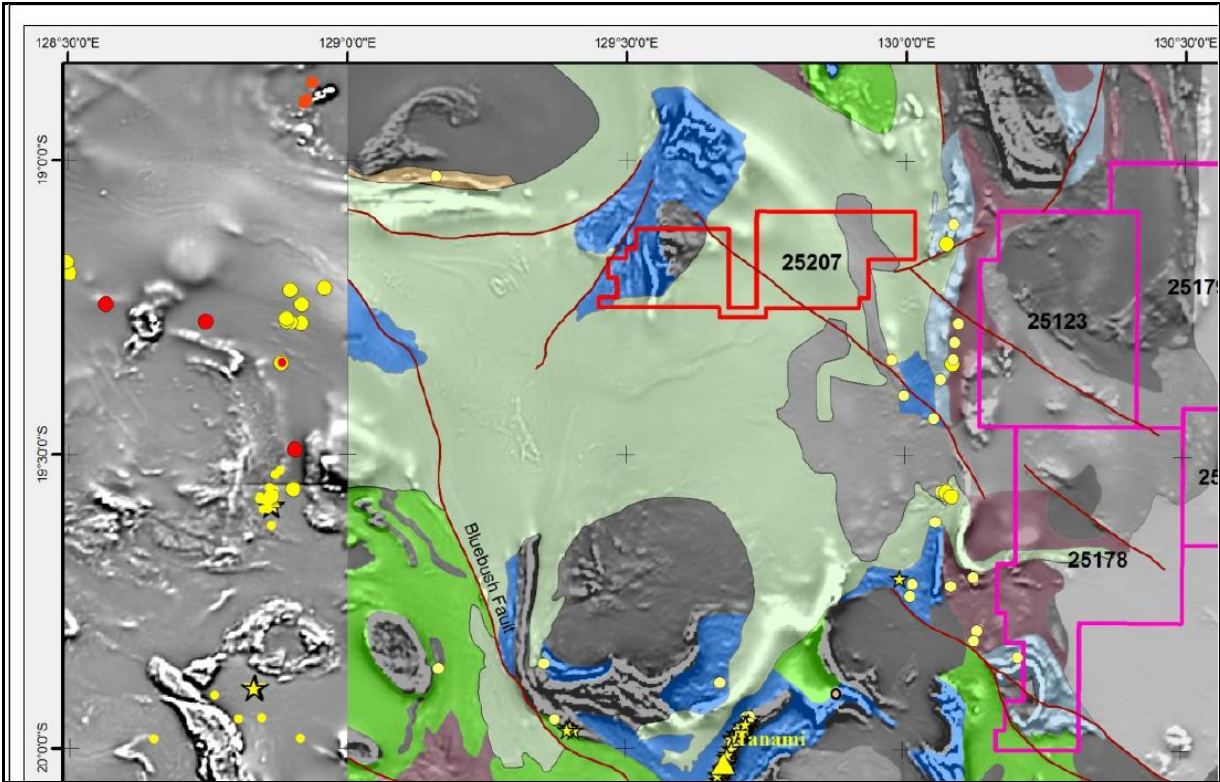


Figure 3: EL25207 regional geology

**WORK DONE AND RESULTS**

Due to lack of funds, further exploration work was not carried out through the period.

**CONCLUSIONS AND RECOMMENDATIONS**

Previously, a desktop review of available information and exploration results to date has led SRK Consultants to conclude that significant potential for Tanami-style gold mineralisation still exists in the western corner of the Licence. Areas of the Licence shown to be overlain by Gardiner Sandstone and Cambrian volcanic and sediments have now been relinquished and only the Tanami Group basement remains.

Several of the RAB drillholes from 2010 showed anomalous gold and pathfinder elements which are yet to be followed up. Drilling needs to be deeper and sample quality improved. Only a handful of the original airborne EM anomalies were tested and several remain. Little is known of the geology of the area.

Vegetation comprises thick native scrub and access is limited; drill rig access requires the bulldozing of tracks.

Prior to further drilling however, it is recommended that a helicopter-supported grid-based systematic soil geochemistry programme be carried out to supplement the airborne EM/radiometric data and restrict future effort to areas of anomalous metal endowment. More than 150km<sup>2</sup> of Licence area still remains with only minimal geological knowledge and this will allow concentration of limited resources on several prospects within the remaining Licence area.

-ENDS-