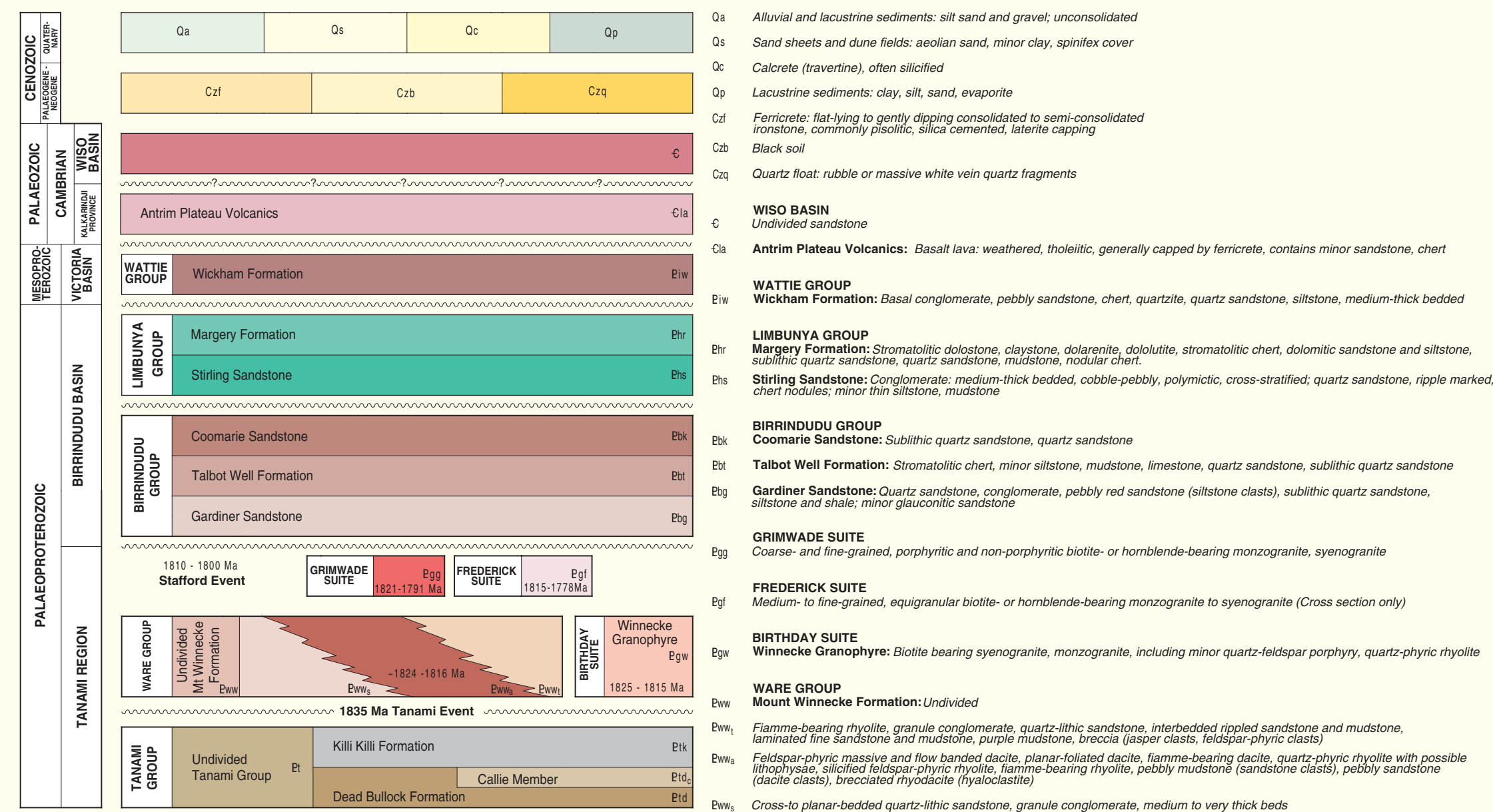



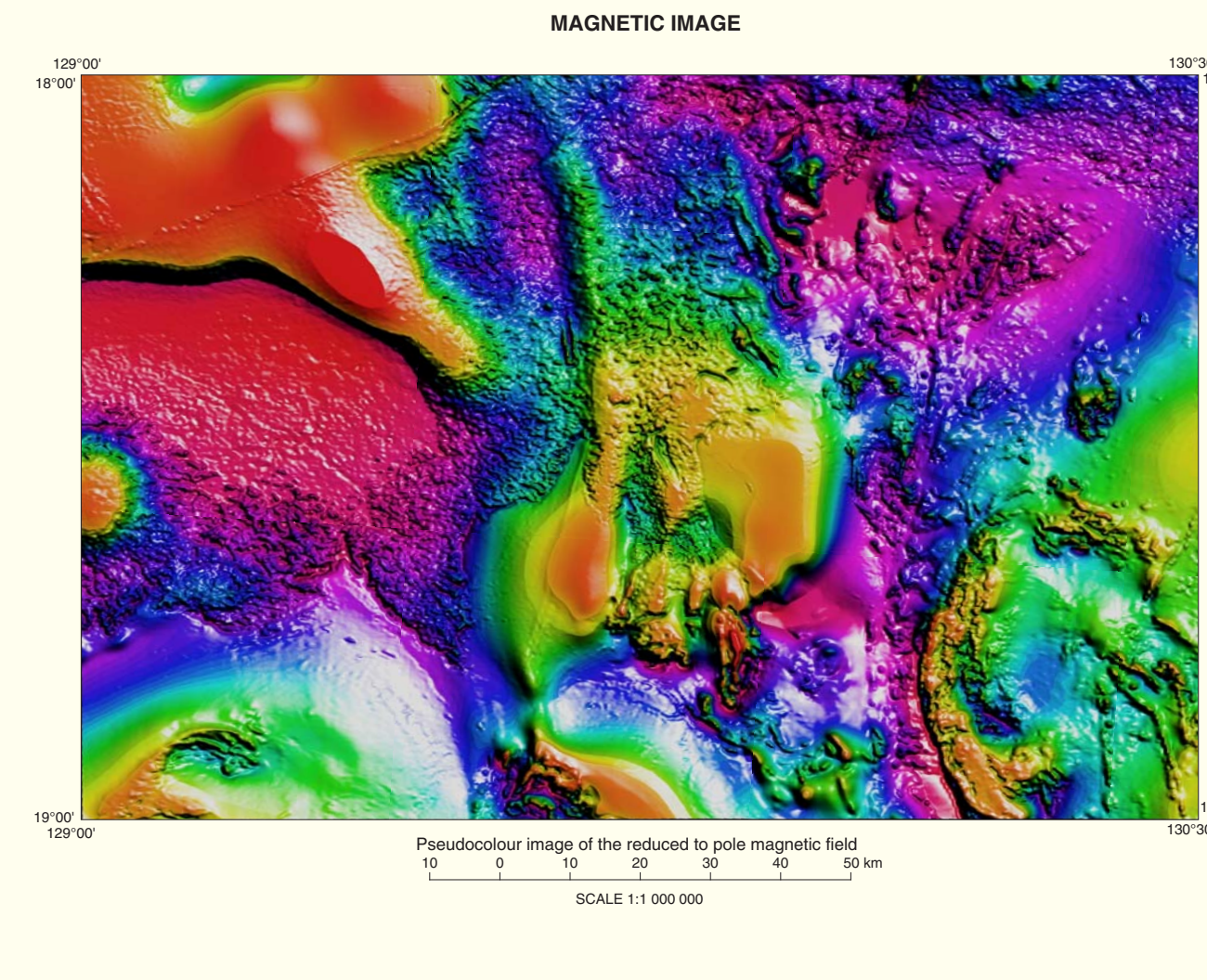
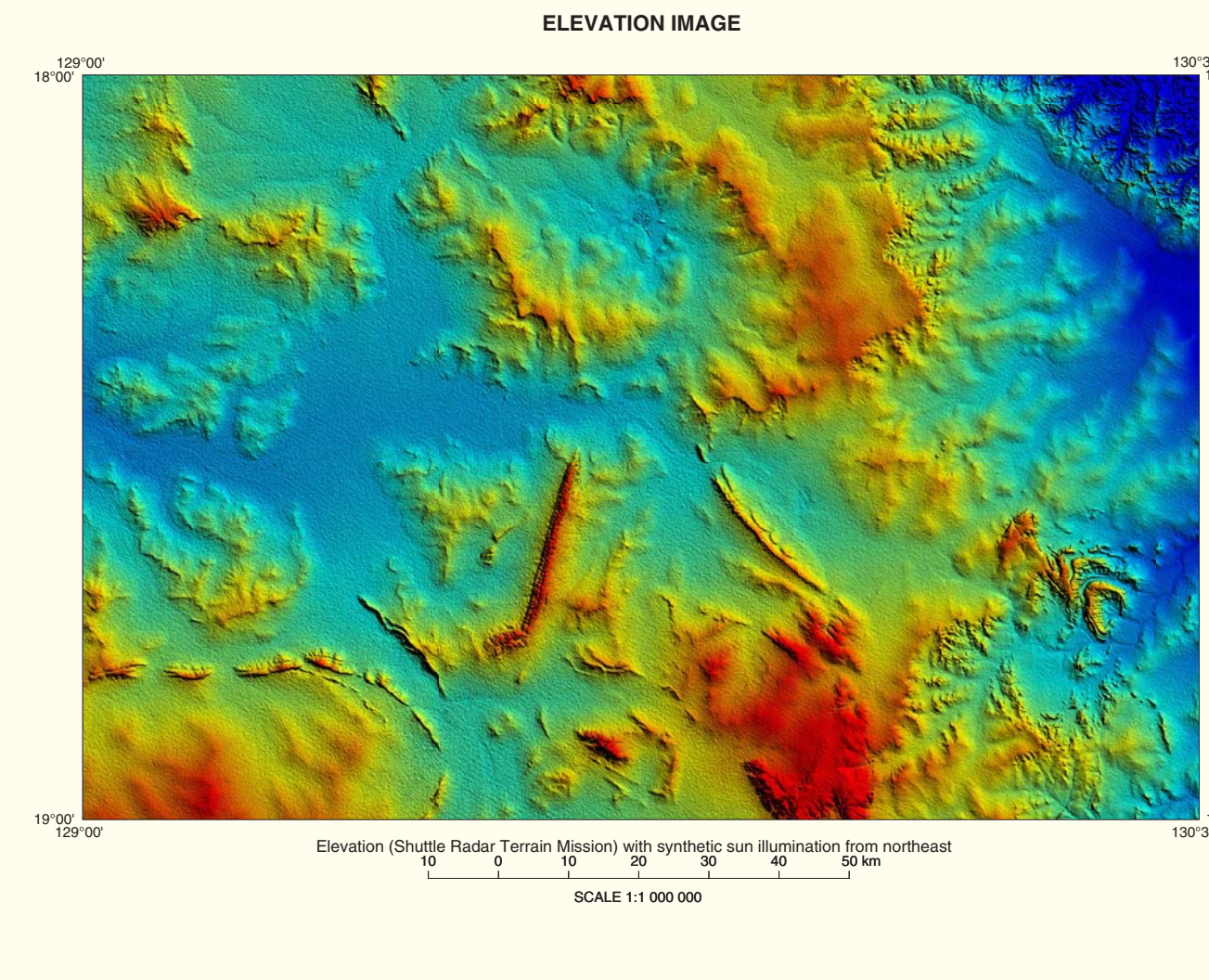
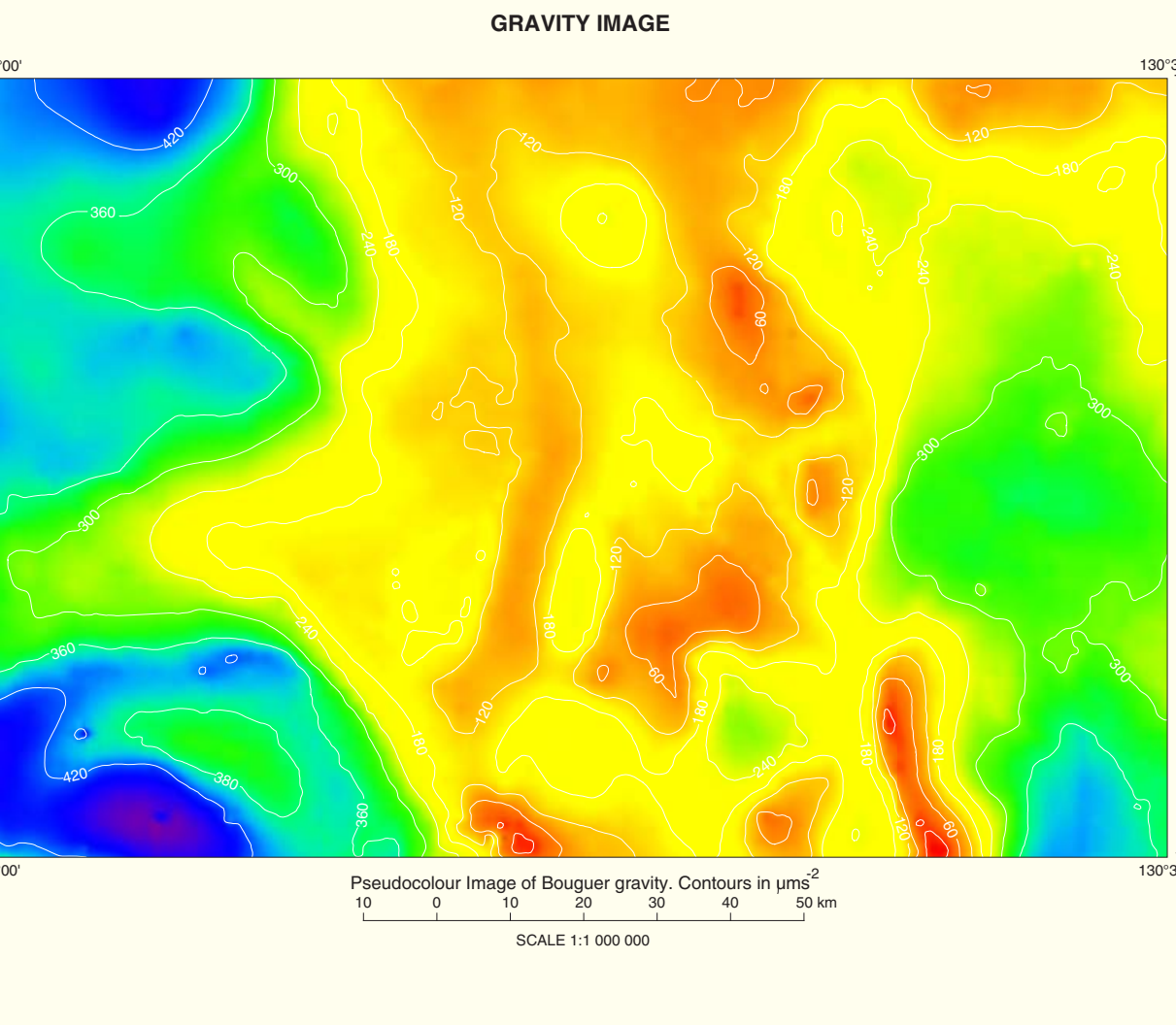
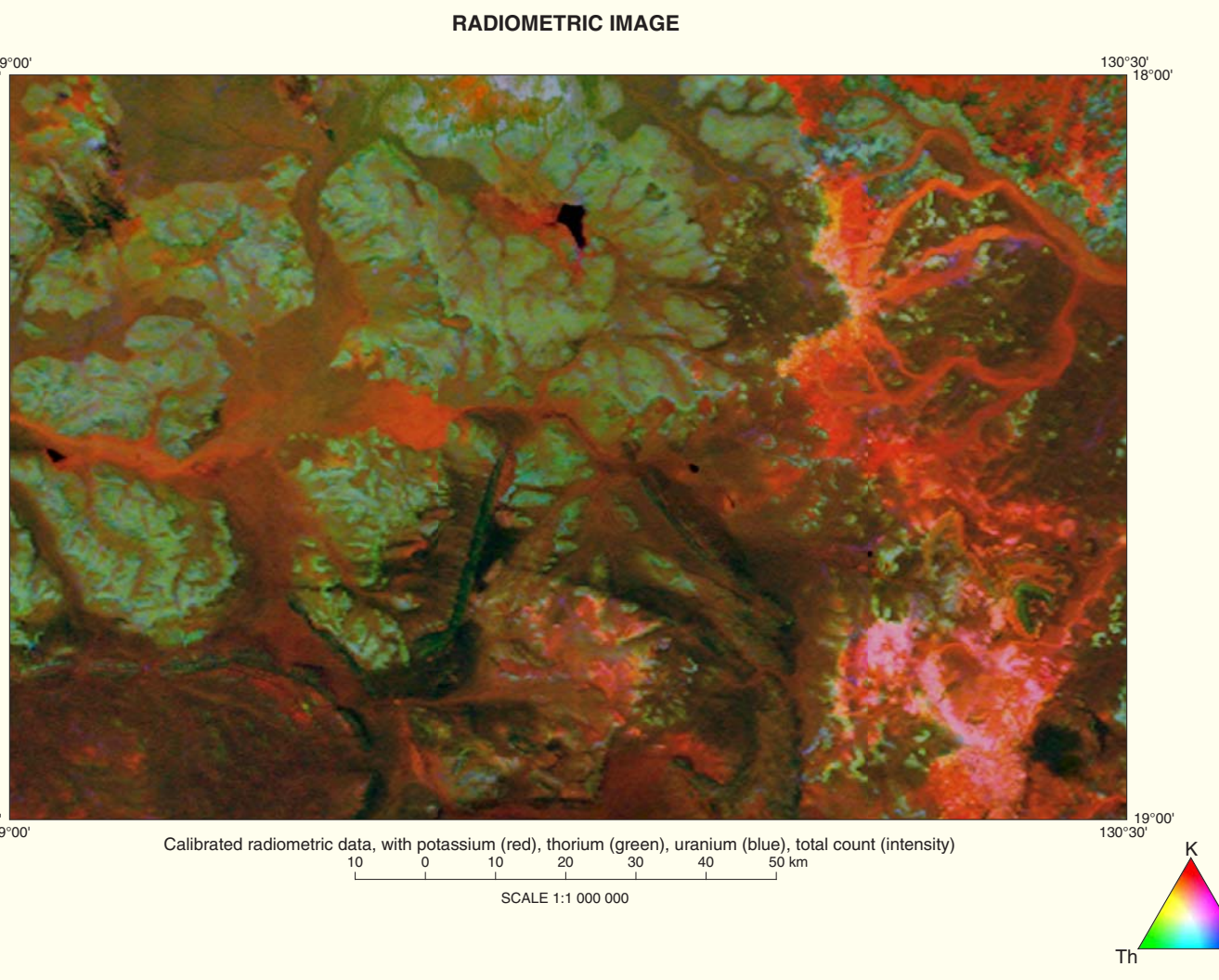
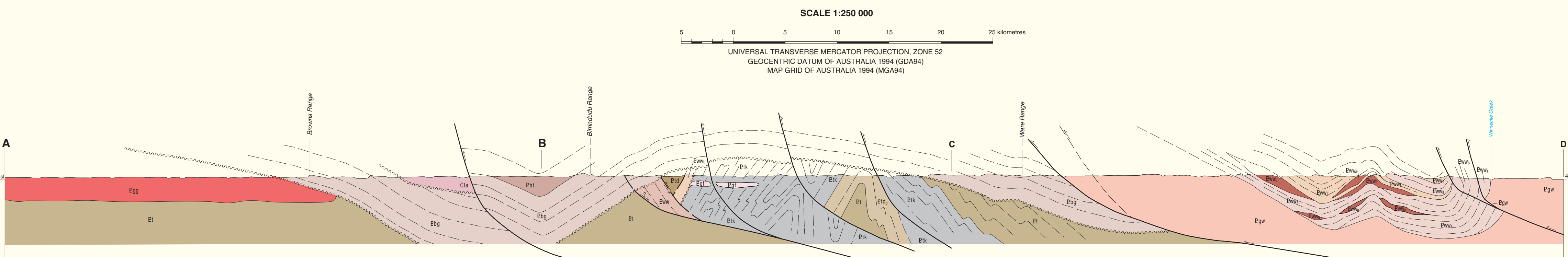
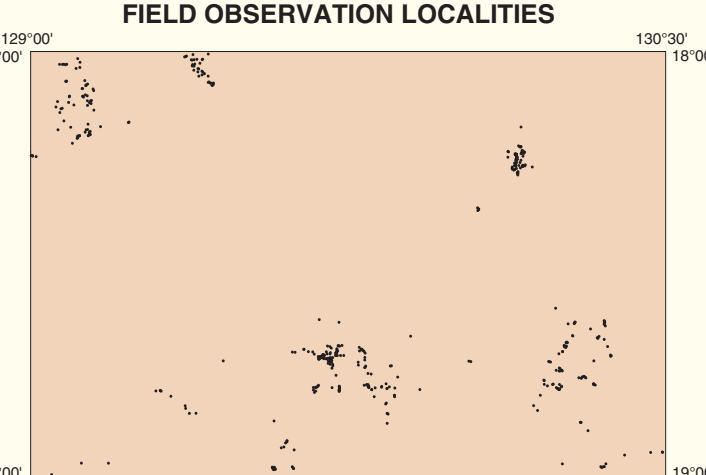
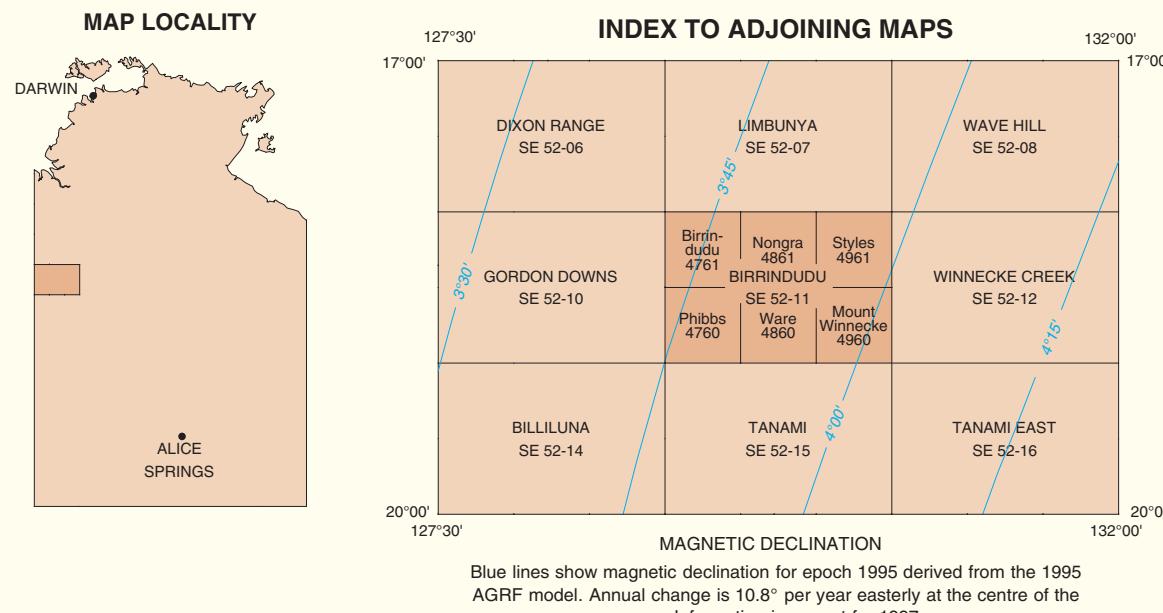
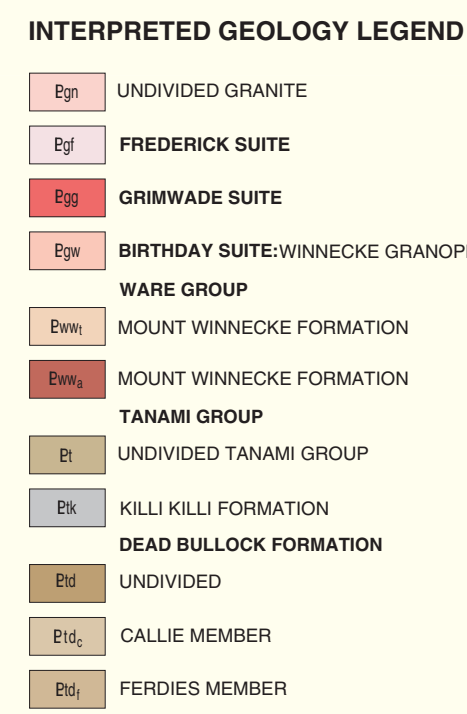
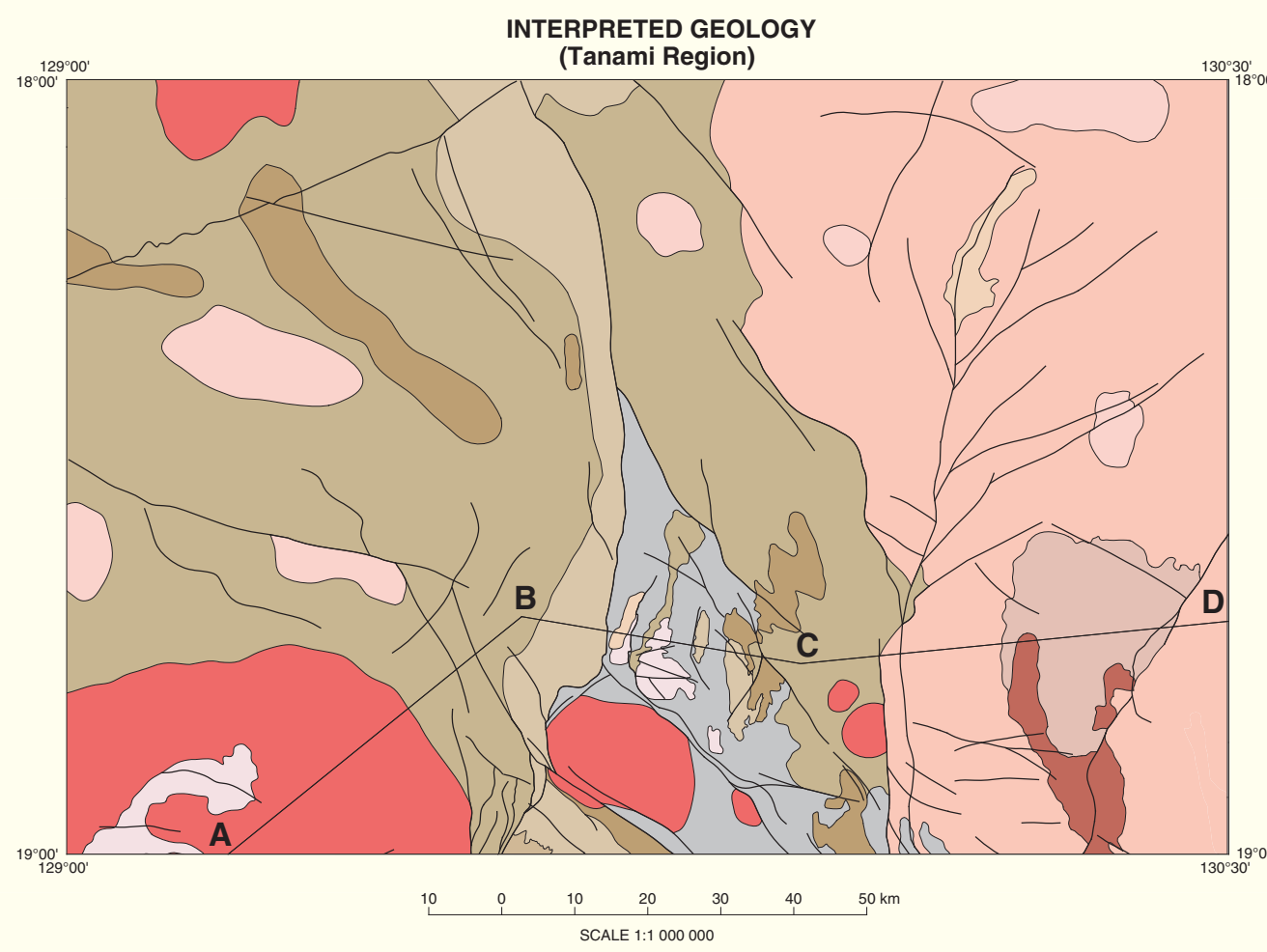
## SHEET SE 52-11



TOPOGRAPHICAL SYMBOLS	
	Highway - unsealed
	Minor road, unsealed
	Vehicle track
	Fence
	Homestead
	Building
	Yard

## GEOLOGICAL LEGEND

	Geological boundary; approximate
	Fault, mapped, concealed
	Fault, concealed (interpreted from geophysical data)
	Thrust fault, concealed (interpreted from geophysical data)
	Unconformity or tectonic event
	Trans-lake
	Syncline
	Anticline
	Quarry vein
	Strike-slip with dip
	Pegmatite vein
	Minor fold showing plunge
	Strike and dip of strata
	Strike and dip of strata from first station
	Vertical strata from first station
	Horizontal strata from first station
	Strike and dip of inclined strata
	Strike and dip of strata; dot indicates projected intersection of facies
	Strike and dip of strata; dip less than 5° from first station
	Strike and dip of dip
	Plunge of direction
	Strike and dip of first benching
	Strike and dip of second benching
	Geochronology sample location and reference



The Northern Territory Government does not warrant this map as definitive, nor free from error and does not take liability for the use caused by, or arising from reliance upon information provided herein. The information presented on this map is current to the best of our knowledge and is not intended to be used for navigation or other purposes where accuracy is essential.

Produced by, and for data content, by the Northern Territory Geological Survey, Department of Resources, Dundas, Australia. The map is based on data from the Northern Territory Geological Survey, Department of Resources, Dundas, Australia. The map is based on data from the Northern Territory Geological Survey, Department of Resources, Dundas, Australia. The map is based on data from the Northern Territory Geological Survey, Department of Resources, Dundas, Australia.

© 2010 Northern Territory Geological Survey. All rights reserved. This map is a reproduction of the original map and is not to be used for navigation or other purposes where accuracy is essential.

This map is accompanied by a text publication, Vandenberg L. and Crisp A. 2011. *Geology of the Tanami Range, Northern Territory*. Northern Territory Geological Survey, Department of Resources, Dundas, Australia. ISBN 978-0-7308-1000-0.

It is recommended that this map be referred to as: Vandenberg L. and Crisp A. 2011. *Emminkhuizen, Northern Territory* (Second Edition). Northern Territory Geological Survey, Department of Resources, Dundas, Australia. ISBN 978-0-7308-1000-0.

For more information on this map, please contact the Northern Territory Geological Survey, Department of Resources, Dundas, Australia. Telephone: 08 8946 6445 or visit the NTGS website at [www.ntgs.gov.au](http://www.ntgs.gov.au). Email: [geosource@ntgs.gov.au](mailto:geosource@ntgs.gov.au).

**WARNING:** Colours will fade with prolonged exposure to light