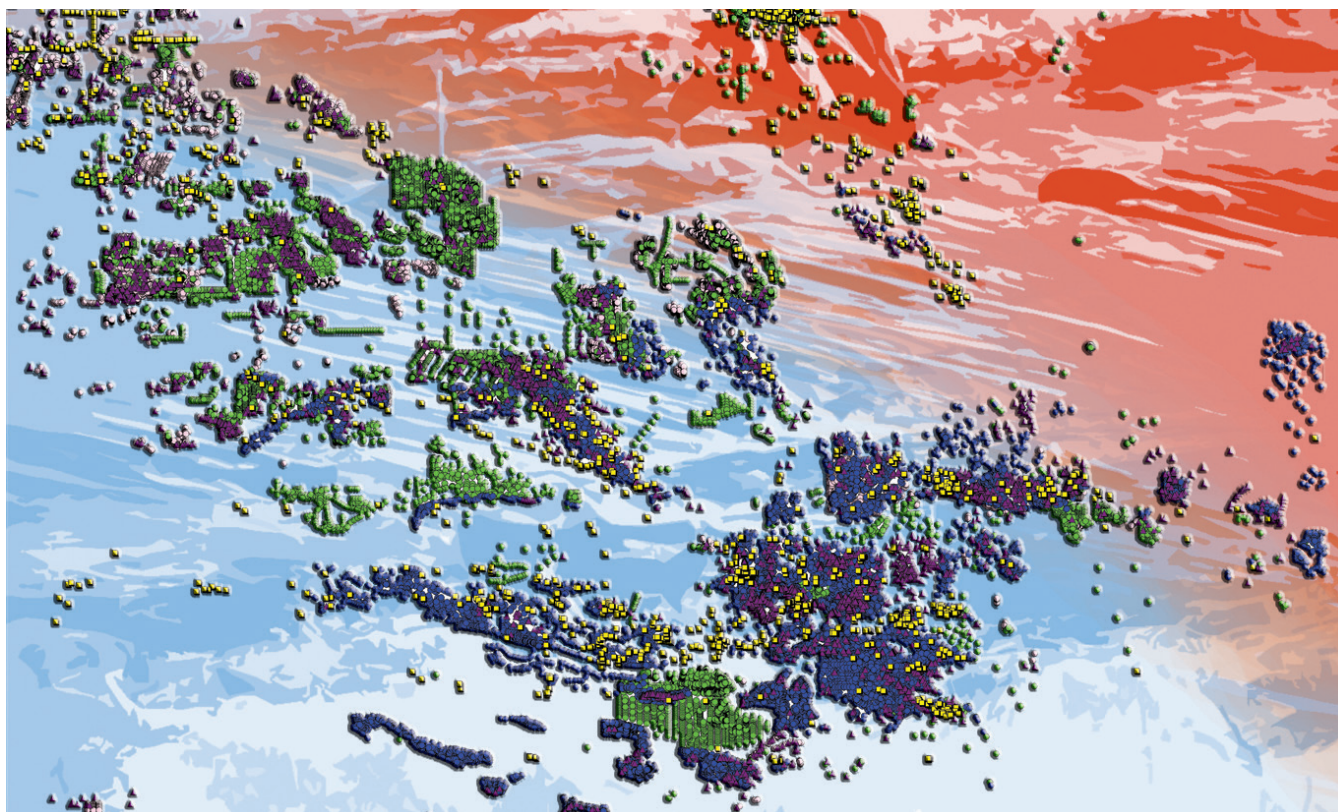


## Northern Territory geochemical and drilling datasets



**Digital Information Package 001 (DIP 001)**

Version: September 2025

DEPARTMENT OF MINING AND ENERGY

MINISTER: Hon. Gerard Maley, MLA

CHIEF EXECUTIVE: Alister Trier

NORTHERN TERRITORY GEOLOGICAL SURVEY

SENIOR EXECUTIVE DIRECTOR: Ian Scrimgeour

BIBLIOGRAPHIC REFERENCE: Northern Territory geochemical and drilling datasets. *Northern Territory Geological Survey, Digital Information Package 001*, September 2025.

BIBLIOGRAPHY: Digital Information Package / Northern Territory Geological Survey ISSN 1445-5358

**Northern Territory Geological Survey**

3rd floor Paspalis Centrepont Building

Smith Street Mall, Darwin

GPO Box 4550

Darwin NT 0801, Australia

**Arid Zone Research Institute** Alice Springs

South Stuart Highway,

PO Box 8760

Alice Springs NT 0871, Australia

**For further information contact:**

Minerals and Energy InfoCentre

Phone +61 8 8999 6443

Website: <https://dme.nt.gov.au>  
<https://resourcingtheterritory.nt.gov.au>

Email: [geoscience.info@nt.gov.au](mailto:geoscience.info@nt.gov.au)



© Northern Territory of Australia (Northern Territory Geological Survey)

With the exception of the Northern Territory of Australia logo, other government and corporate logos and where otherwise noted, all material in this publication is provided under a Creative Commons Attribution 4.0 International licence (<https://creativecommons.org/licenses/by/4.0/legalcode>).

You are free to re-use the work under the licence, on the condition that you attribute the Northern Territory of Australia (Northern Territory Geological Survey) and comply with the other licence terms.

**Disclaimer**

The Northern Territory of Australia has exercised due care and skill in preparing and compiling the information and data in this publication. While all care has been taken to ensure that the information contained in this publication is true and correct at the time of publication, it is not intended to be relied on as a comprehensive representation of technical or scientific advice or used for commercial purposes. The Territory gives no warranty or assurances as to the accuracy of the information contained in the publication and accepts no direct or indirect liability for reliance on its content, including liability for negligence and for any loss, damage, injury, expense or cost incurred by any person directly or indirectly as a result of accessing, using or relying on any of the content of this publication to the maximum extent permitted by law.

## RELEASE NOTES

Digital Information Package 001 (DIP 001) is a compilation of geochemical and drillhole sampling data managed by the Northern Territory Geological Survey (NTGS). DIP 001 data is sourced from industry statutory reports and NTGS projects. Datasets include:

1. Drillhole collars
2. Drillhole downhole surveys
3. Drillhole sample assays and maximum assays
4. Rock (rockchips and whole rocks) samples and assays
5. Soil samples and assays
6. Stream sediment samples and assays.

Updates are released bi-annually and include both additional legacy data and newly released data. All data, except drillhole sample assays, raw geochemical data, laboratory metadata and downhole survey data can also be downloaded from [STRIKE](#).

### Data package summary

<b>DIP 001 September 2025</b>	<b>Total number of records</b>	<b>Raw geochem files (csv)</b>	<b>Lab metadata records (csv)</b>
Drillhole collars	313,533	-	-
Downhole survey	149,659	-	-
Drillhole sample assays	2,210,334	1,923	43,371
Drillhole maximum assays	188,963	-	-
Rock samples and assays	148,867	2,310	63,570
Soil samples and assays	485,606	1,642	39,223
Stream sediment samples and assays	157,429	1,163	25,846

### Folder structure

01_Metadata	data licencing and dictionary
02_CSV_Files	geochemical and drilling csv files, raw geochemical data folders and laboratory metadata
03_GIS_ESRI_Files	geochemical and drilling ESRI shape and geodatabase layers
04_GIS_MapInfo_Files	geochemical and drilling MapInfo layers

**New data in this release:**

- Geochemical data reformatted to common units and revised lists of elements/analytes, based on sample type. There are 94 element/unit combinations (without repeats) for rocks and drill samples, and 70 element/unit combinations (without repeats) for soils and stream sediment samples (refer to tables 1 & 2).
- All raw geochemical data from the NTGS database (including repeats, extra elements etc.) exported as csv files for each sample type, separated based on report number.
- Accompanying laboratory metadata csv files for raw geochemical data, according to sample type.
- Drillhole maximum assays – the highest assay result recorded for all down-hole samples in a hole for each element/analyte (table 1), recorded at the collar location of the hole.

Table 1. Rock and drill sample elements/analytes and units

Ag	ppm	FeO	pct	Pt	ppb	Yb	ppm
Al	pct	Ga	ppm	Rb	ppm	Zn	ppm
Al2O3	pct	Gd	ppm	Re	ppm	Zr	ppm
As	ppm	Ge	ppm	Rh	ppb	ZrO2	pct
As2O3	pct	Hf	ppm	Ru	ppm		
Au	ppm	Hg	ppm	S	pct		
B	ppm	Ho	ppm	Sb	ppm		
Ba	ppm	In	ppm	Sc	ppm		
BaO	pct	Ir	ppm	Se	ppm		
Be	ppm	K	pct	Si	pct		
Bi	ppm	K2O	pct	SiO2	pct		
Br	ppm	La	ppm	Sm	ppm		
C	pct	Li	ppm	Sn	ppm		
Ca	pct	Lu	ppm	SO3	pct		
CaO	pct	Mg	pct	Sr	ppm		
Cd	ppm	MgO	pct	SrO	pct		
Ce	ppm	Mn	ppm	Ta	ppm		
Cl	pct	MnO	pct	Tb	ppm		
Co	ppm	Mo	ppm	Te	ppm		
Cr	ppm	Na	pct	Th	ppm		
Cr2O3	pct	Na2O	pct	Ti	pct		
Cs	ppm	Nb	ppm	TiO2	pct		
Cu	ppm	Nd	ppm	Tl	ppm		
CuO	pct	Ni	ppm	Tm	ppm		
Dy	ppm	Os	ppb	U	ppm		
Er	ppm	P	pct	U3O8	ppm		
Eu	ppm	P2O5	pct	V	ppm		
F	ppm	Pb	ppm	V2O5	pct		
Fe	pct	Pd	ppb	W	ppm		
Fe2O3	pct	Pr	ppm	Y	ppm		

Table 2. Soil and stream sediment sample elements/analytes and units

Ag	ppm	Lu	ppm	Ti	ppm
Al	ppm	Mg	ppm	Tl	ppm
As	ppm	Mn	ppm	Tm	ppm
Au	ppb	Mo	ppm	U	ppm
Ba	ppm	Na	pct	V	ppm
Be	ppm	Nb	ppm	W	ppm
Bi	ppm	Nd	ppm	Y	ppm
Ca	ppm	Ni	ppm	Yb	ppm
Cd	ppm	Os	ppb	Zn	ppm
Ce	ppm	P	ppm	Zr	ppm
Co	ppm	Pb	ppm		
Cr	ppm	Pd	ppb		
Cs	ppm	Pr	ppm		
Cu	ppm	Pt	ppb		
Dy	ppm	Rb	ppm		
Er	ppm	Re	ppm		
Eu	ppm	Rh	ppb		
Fe	pct	Ru	ppb		
Fe2O3	pct	S	pct		
Ga	ppm	Sb	ppm		
Gd	ppm	Sc	ppm		
Ge	ppm	Se	ppm		
Hf	ppm	SiO2	pct		
Hg	ppm	Sm	ppm		
Ho	ppm	Sn	ppm		
In	ppm	Sr	ppm		
Ir	ppm	Ta	ppm		
K	ppm	Tb	ppm		
La	ppm	Te	ppm		
Li	ppm	Th	ppm		

Please refer to the 01\_Metadata folder for information on individual datasets, including data dictionaries.

Please refer any data quality, integrity or accessibility issues to:

Department of <b>Mining and Energy</b> Northern Territory Geological Survey	
GPO Box 4550 Darwin NT 0801	
Phone:	+61 8 8999 6443
Email:	<a href="mailto:geoscience.info@nt.gov.au">geoscience.info@nt.gov.au</a>