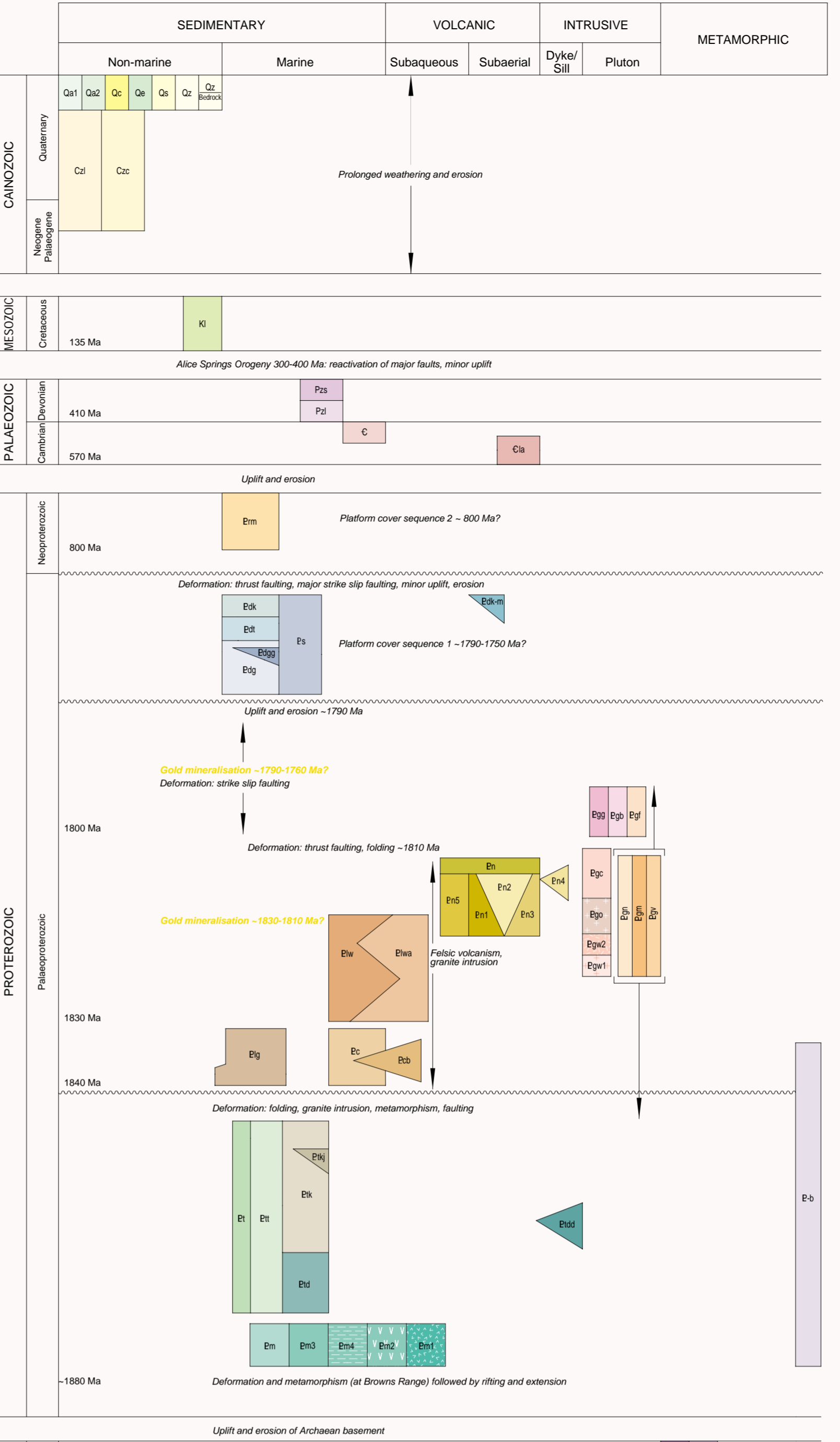
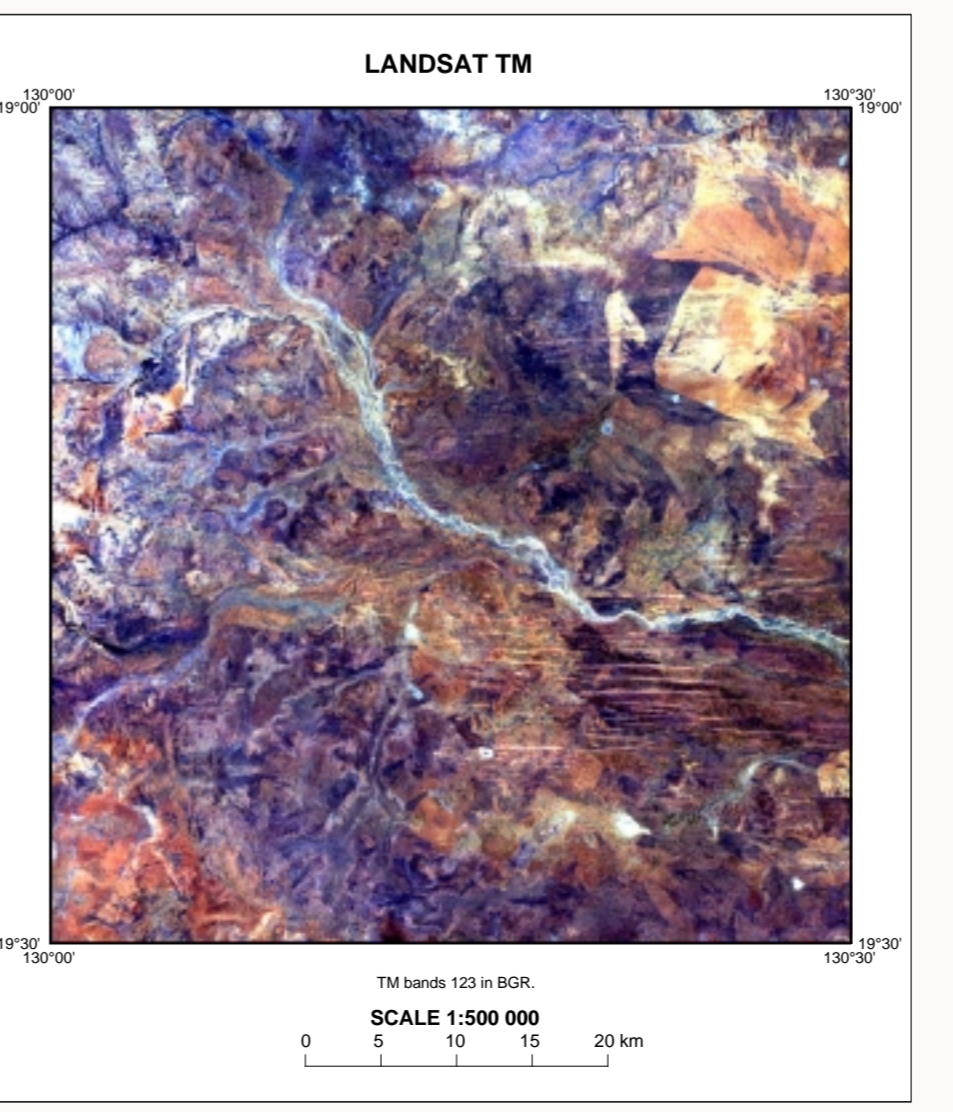
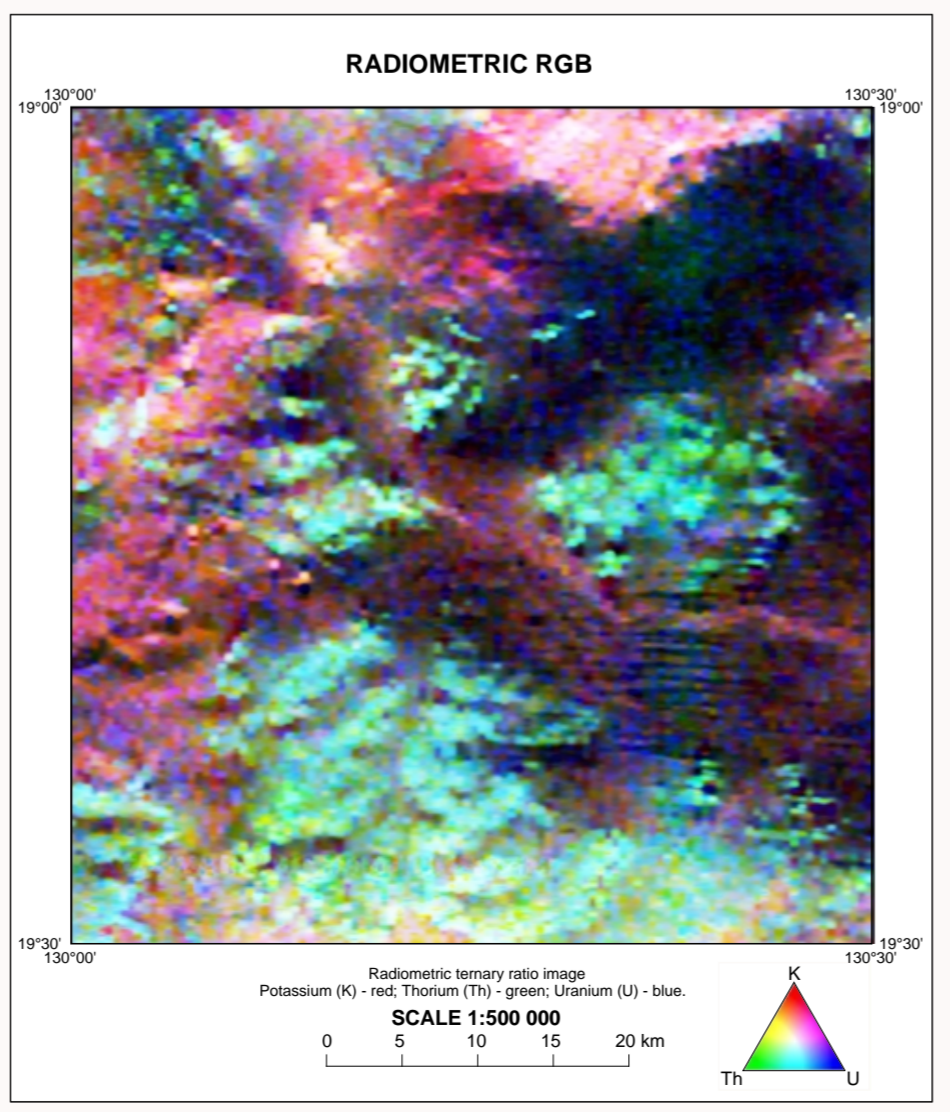
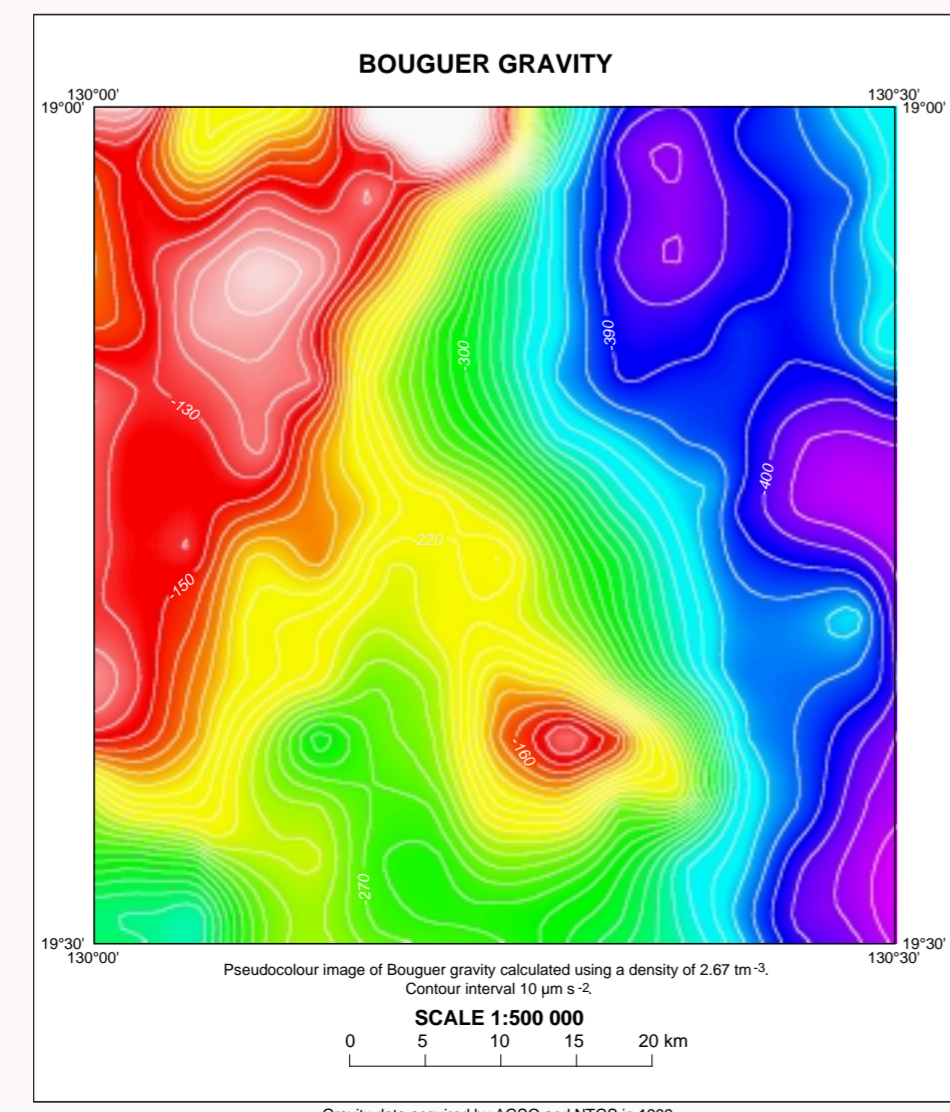
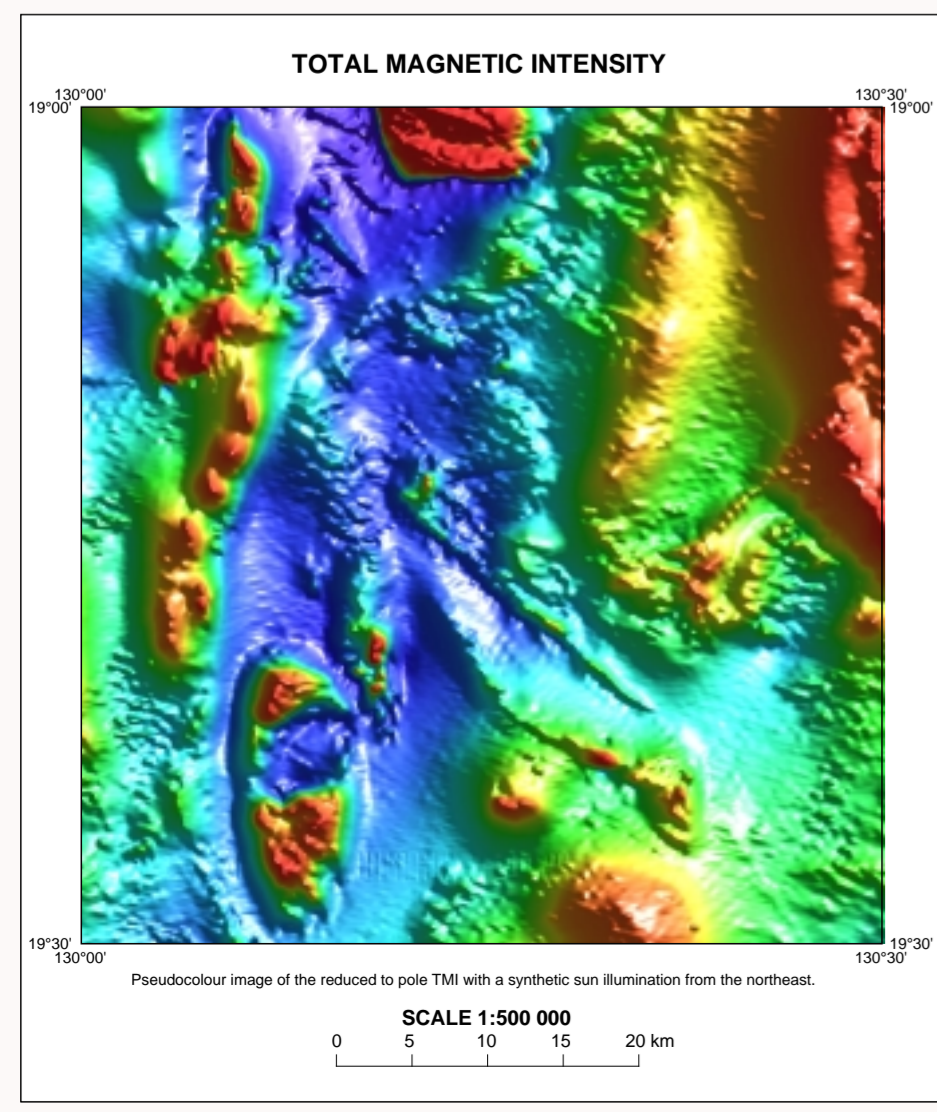
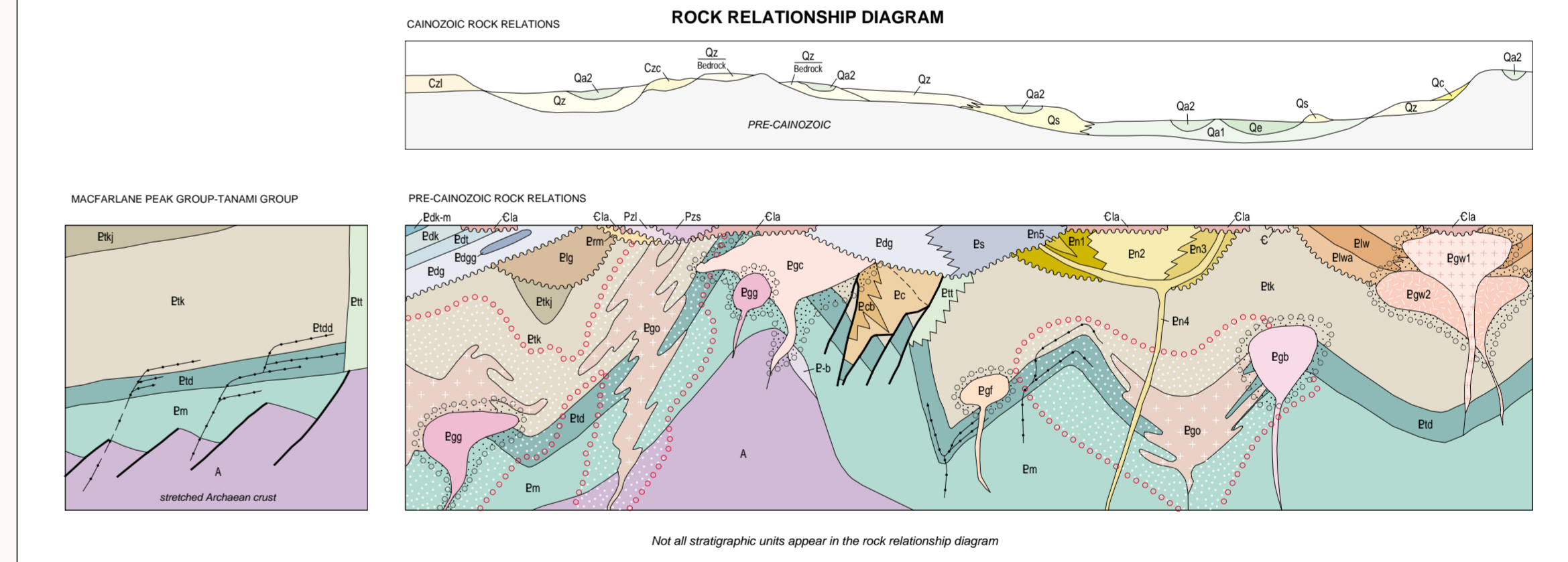


Projection: Universal Transverse Mercator, Zone 52
Grid Coordinates: Map Grid of Australia 1994 (MGA84)
Horizontal Datum: Geocentric Datum of Australia 1994 (GDA84)



- Geological symbols and descriptions for various rock units and features.
- Geological symbols for faults, folds, and other structural features.
- Geological symbols for topographic features like roads, rivers, and dams.



- Geological symbols and descriptions for various rock units and features.
- Geological symbols for faults, folds, and other structural features.
- Geological symbols for topographic features like roads, rivers, and dams.

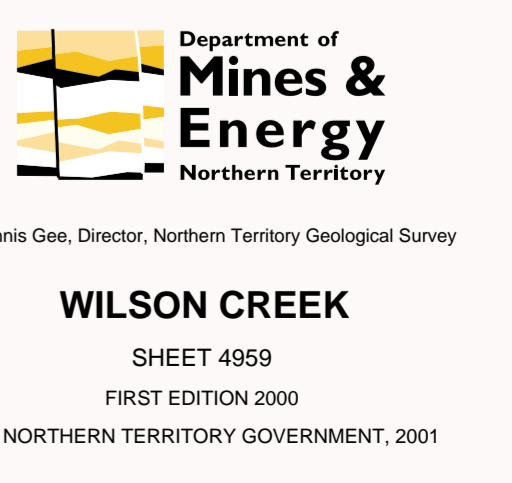


INDEX TO ADJOINING MAPS

Map No.	Map Name	Map No.	Map Name
4958	Wilson Creek	4960	Wilson Creek
4959	Wilson Creek	4959	Wilson Creek
4958	Wilson Creek	4958	Wilson Creek

The Northern Territory Government does not warrant this map as definitive, nor free from error and does not accept liability for the loss caused or arising from reliance upon information provided herein.

Produced by and in part on demand created by the Northern Territory Geological Survey, Department of Mines and Energy, Darwin, Australia. Located under the authority of the Minister for Resource Development, the Honorable Daryl W. Moran, M.A. This map compiled by NTGS from 1:250 000 scale topographic data supplied by the Australian Surveying and Land Information Group, Department of Administrative Services. LANDSAT satellite image provided by the Australian Centre for Remote Sensing (ACRES), a business unit of AUSLIG, Australia's national mapping agency. Digitizing data from selected open file company and government reports. This map incorporates previous published mapping of Blain et al., 1975 (TANAMI SE52-15) and unpublished open file company mapping. DIGITAL DATA: Map data is stored in Microstation format (DGN). Map information can be purchased from the NTGS as hardcopy plots and/or digital files. Information on formats, release conditions, and costs are available from NTGS Sales Counter, 3rd floor Centropoint Building, Darwin, Phone (08) 9599 5443.



WILSON CREEK
SHEET 4959
FIRST EDITION 2000
© NORTHERN TERRITORY GOVERNMENT, 2001