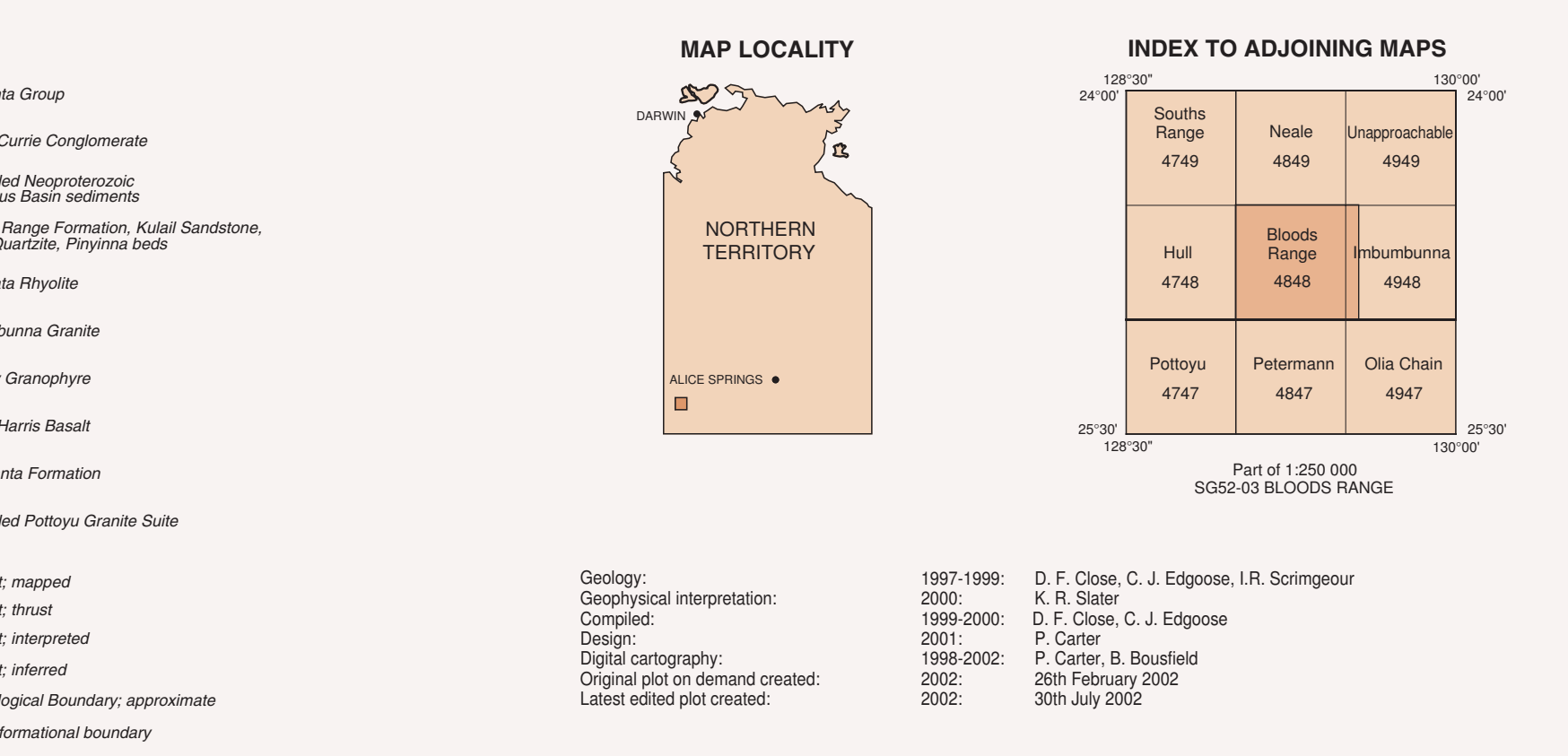
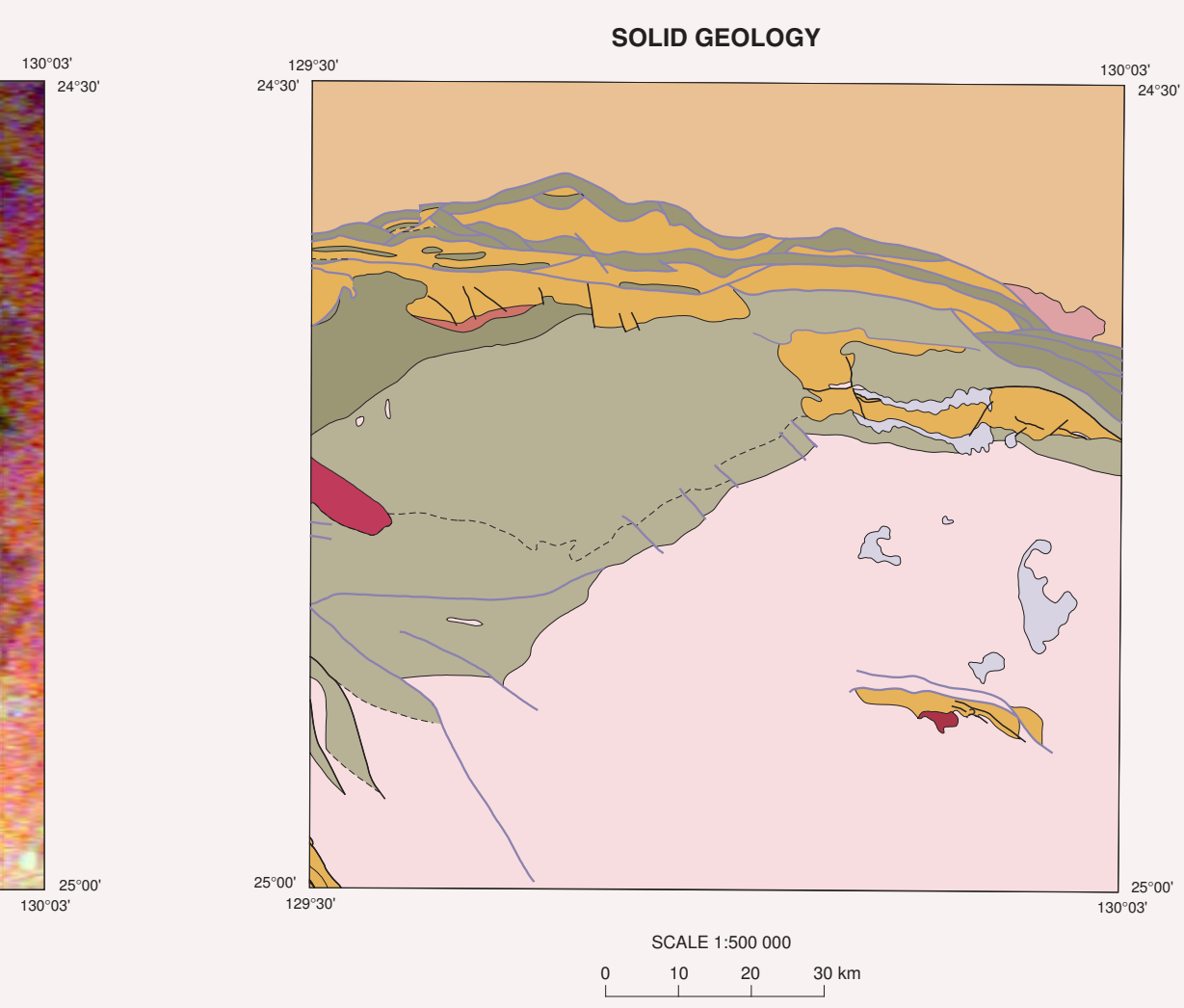
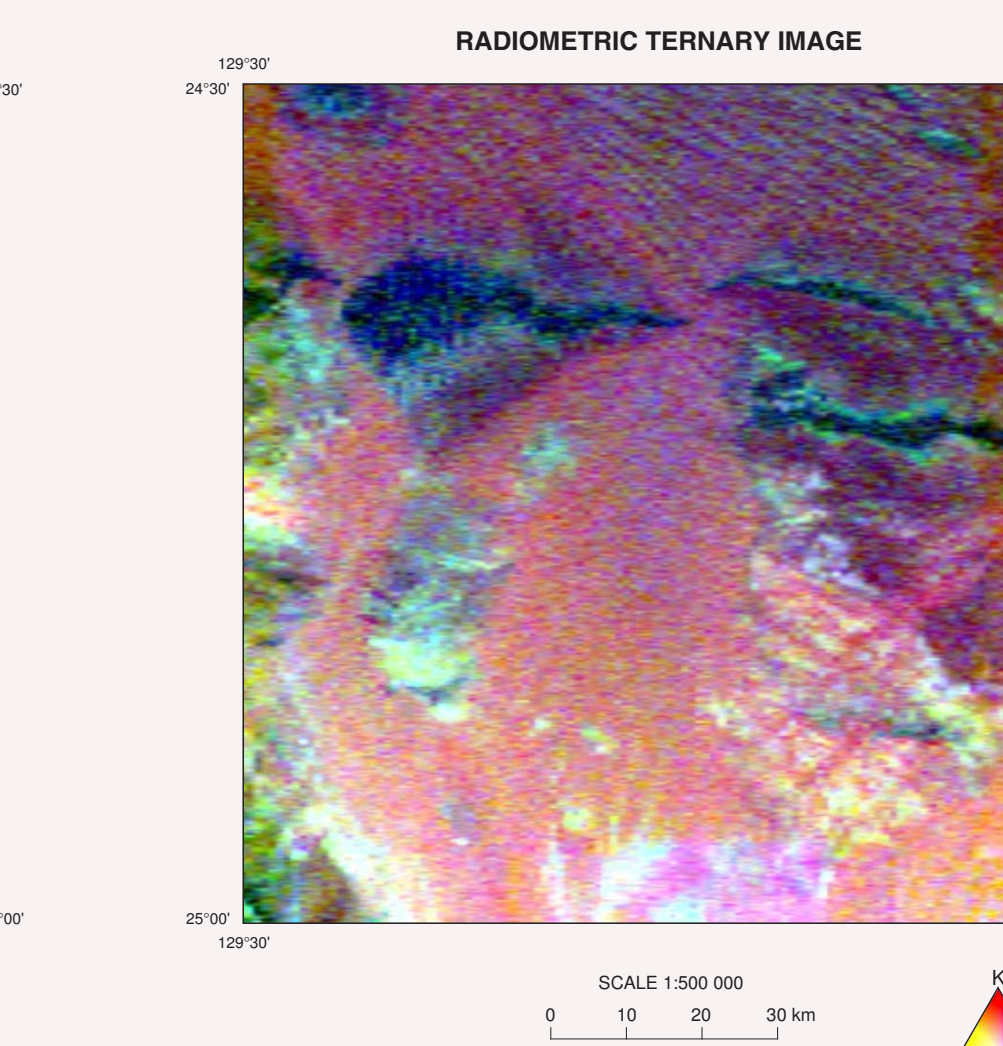
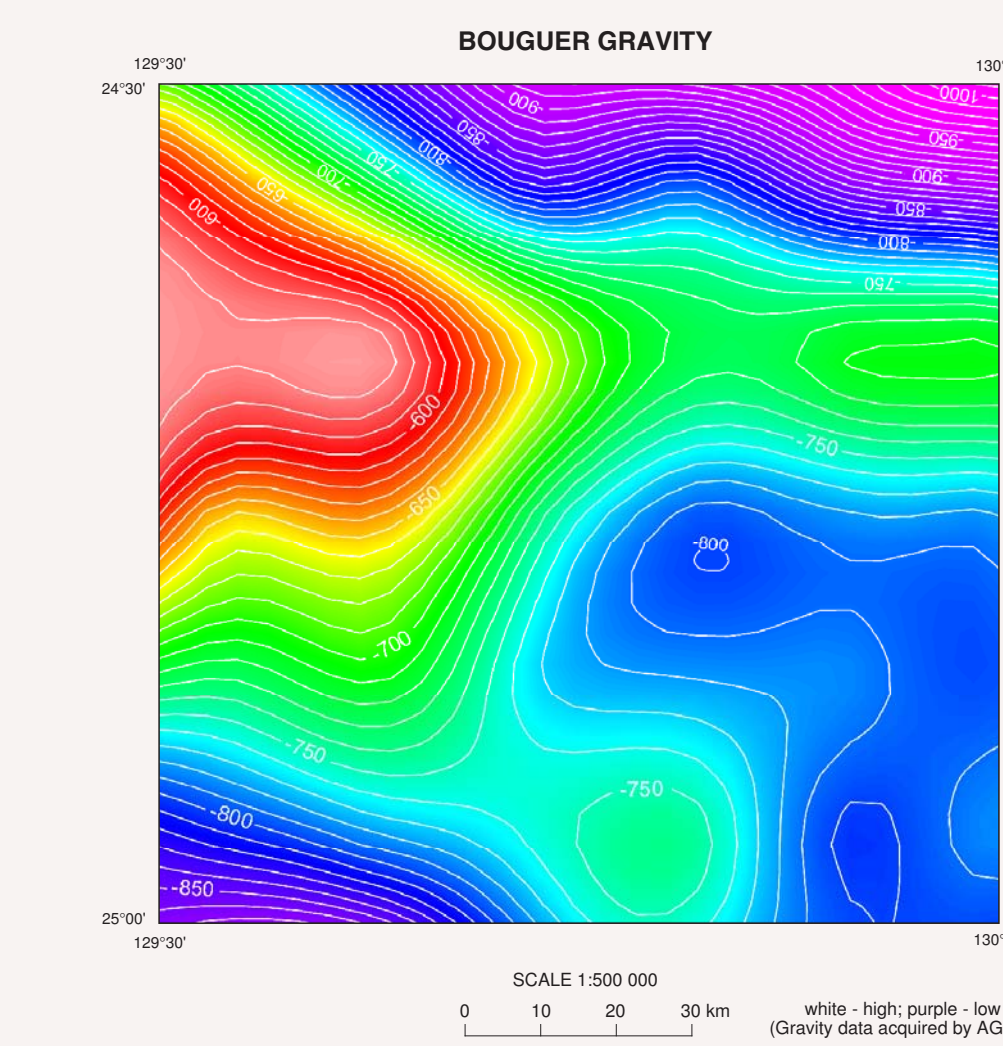
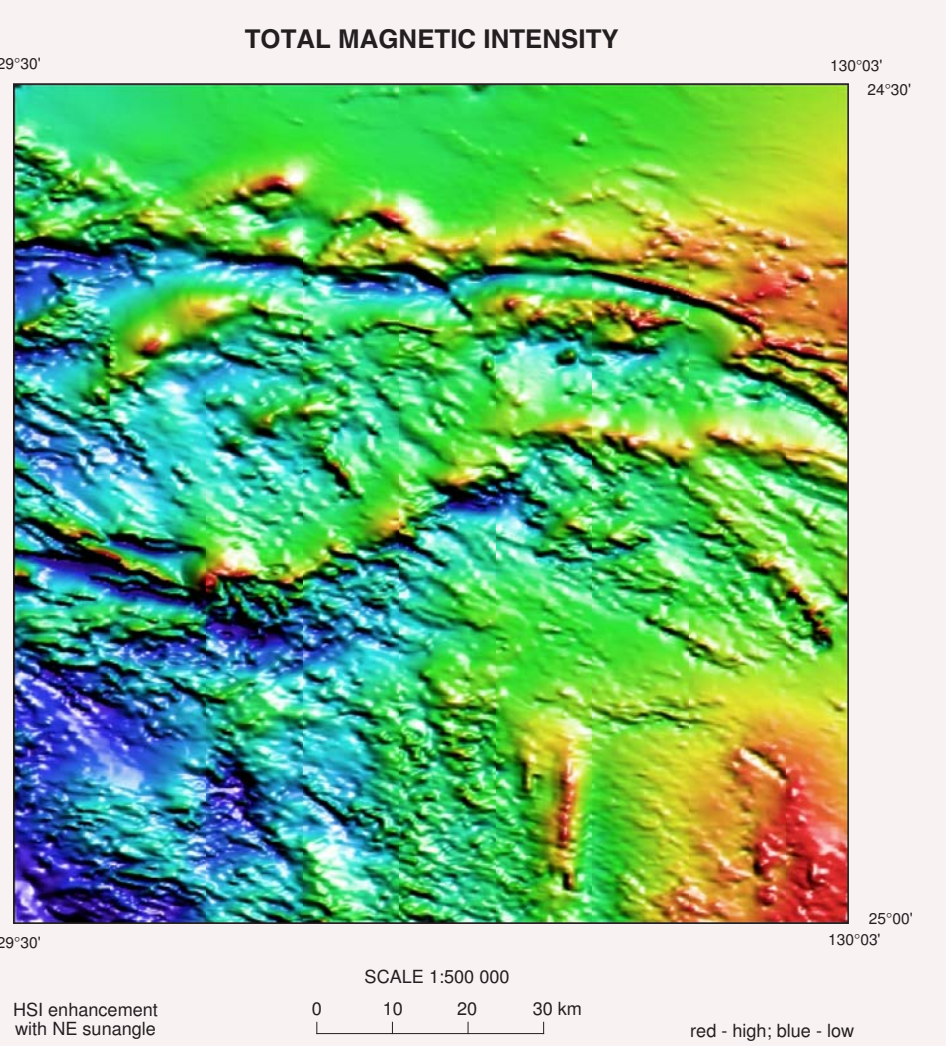
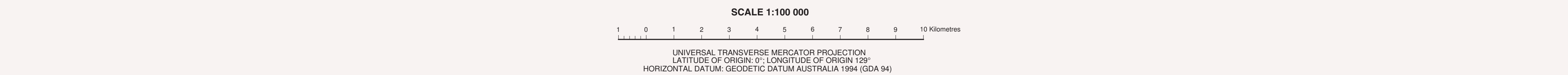
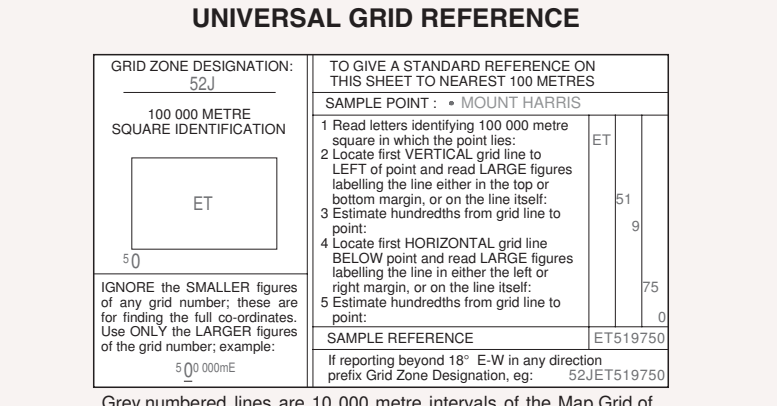
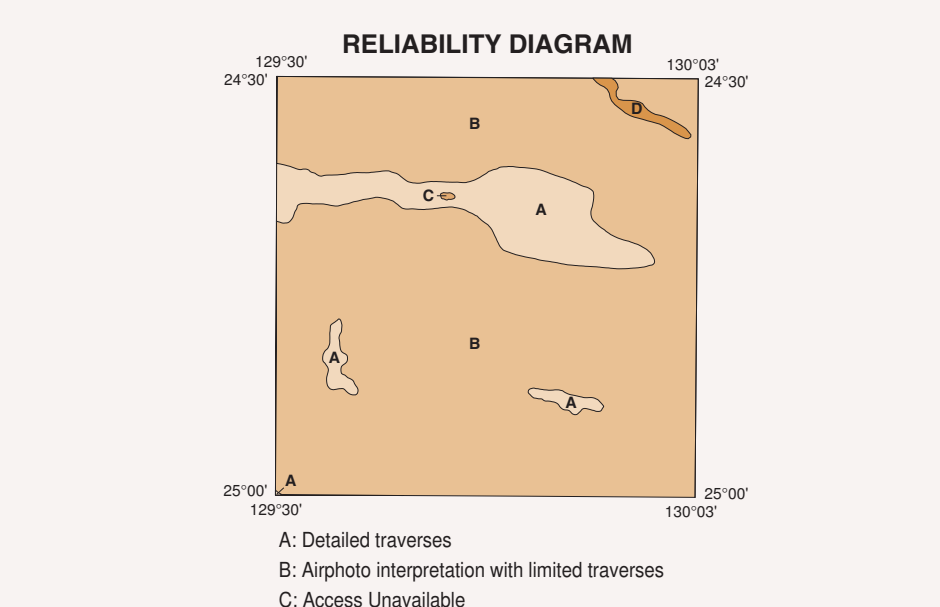
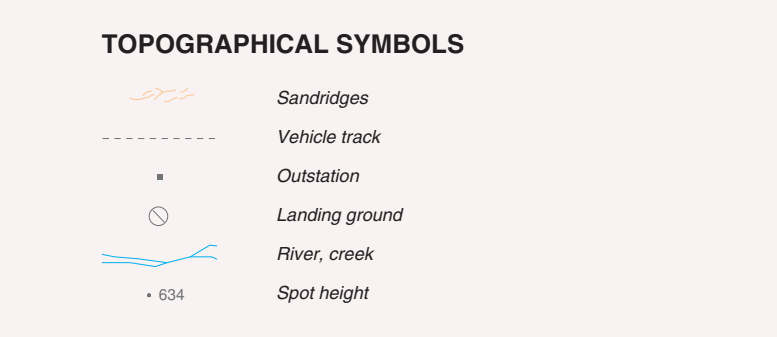
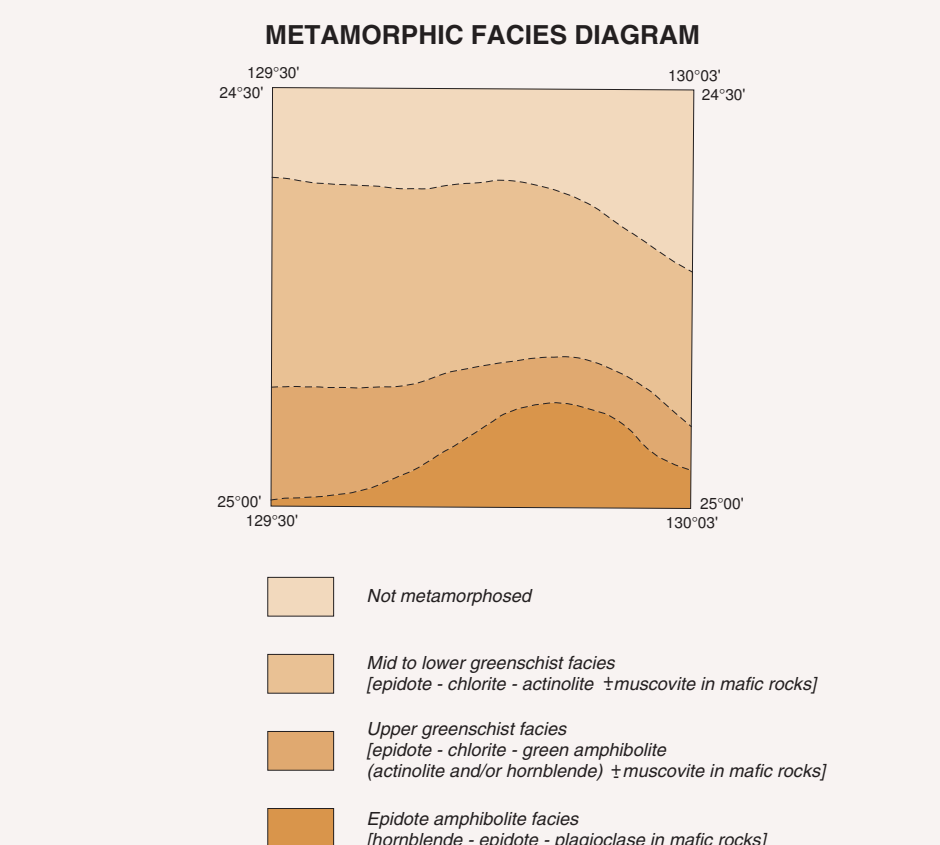
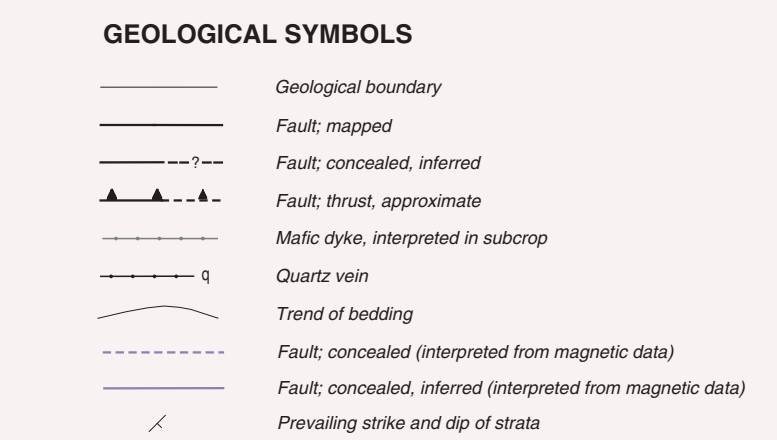
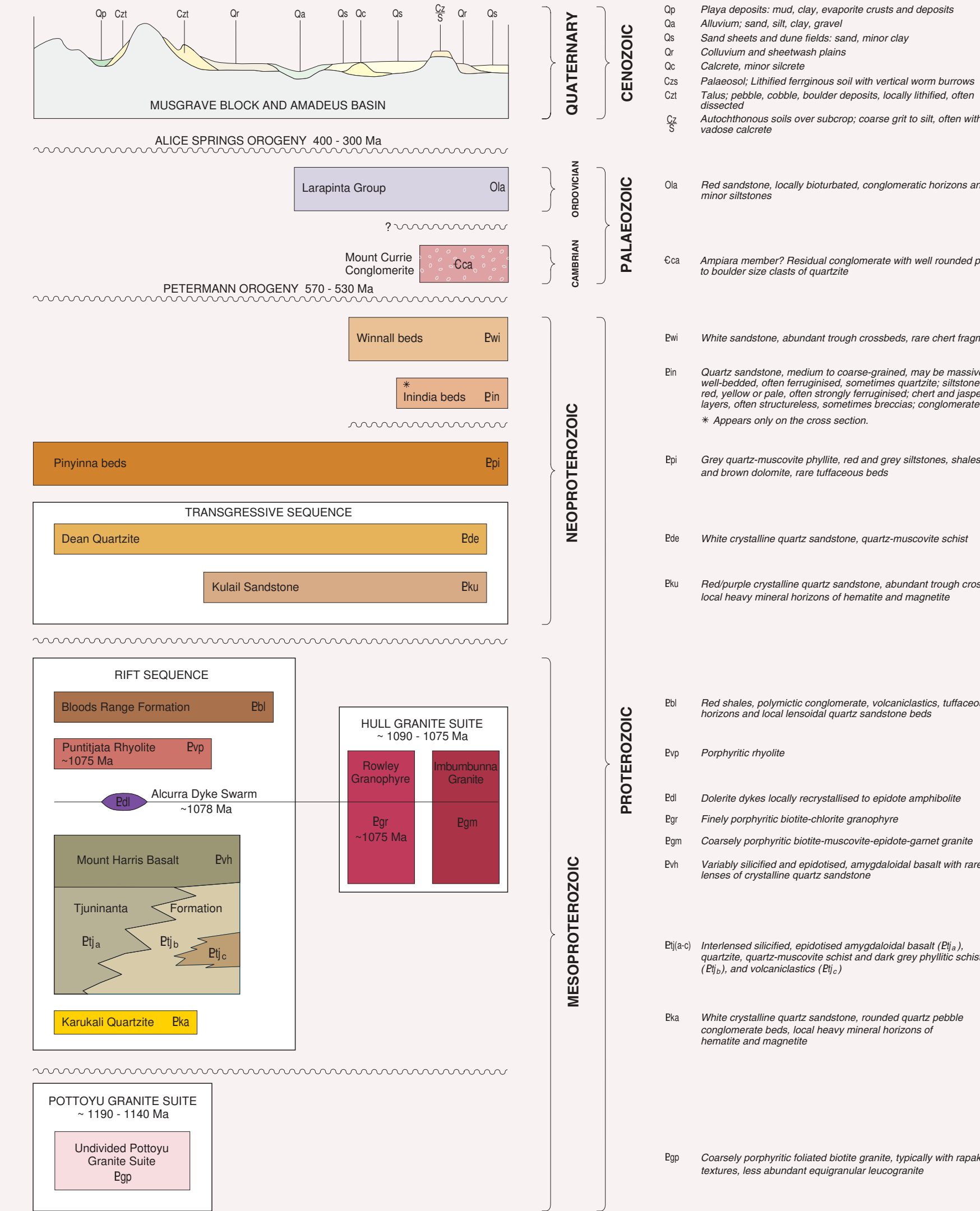
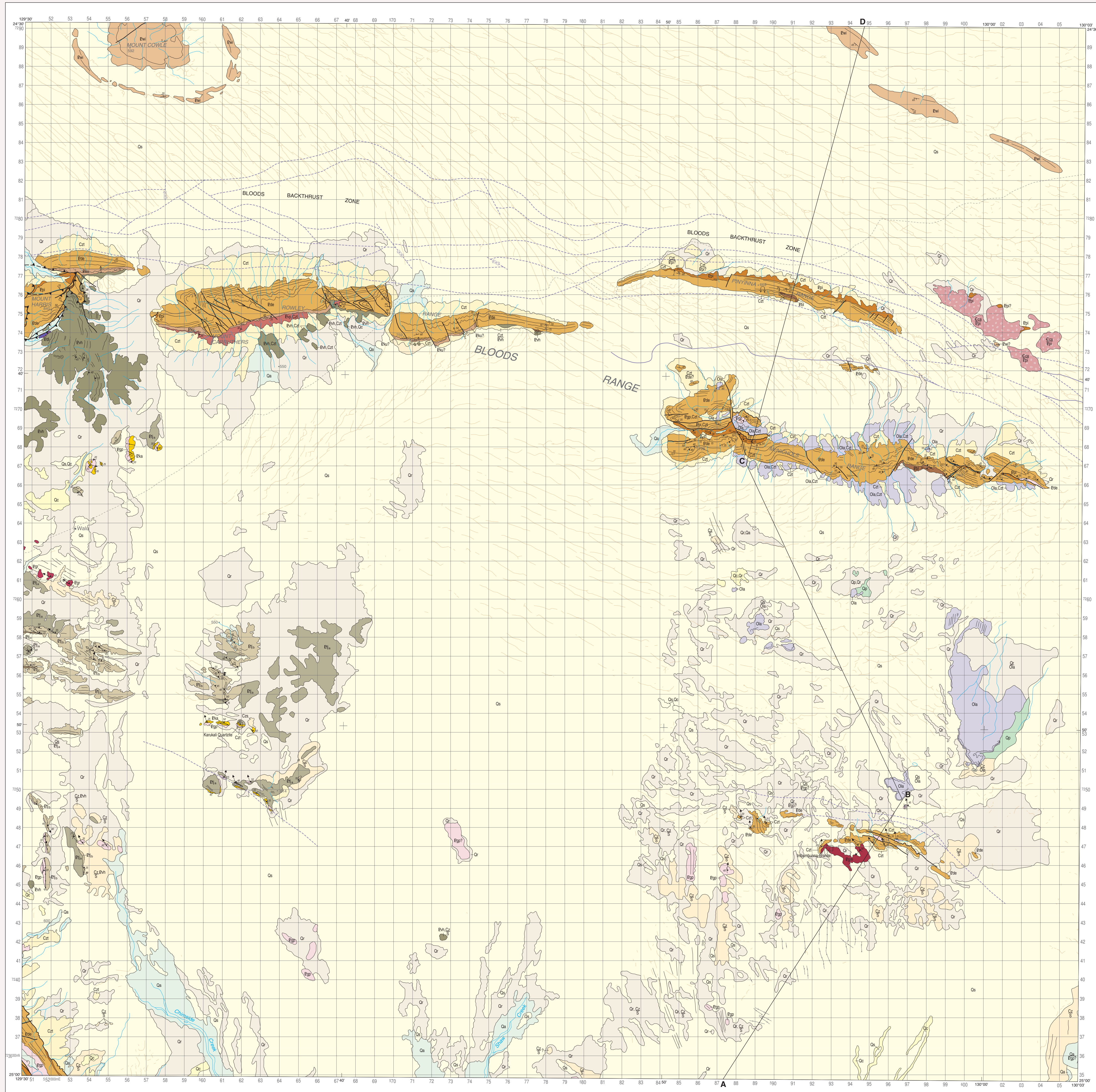


BLOODS RANGE
NORTHERN TERRITORY



Geology: 1997-1999: D. F. Close, C. J. Edgose, I. R. Scrimgeour
 Geophysical interpretation: 2000: K. R. Sailer
 Compiled: 1999-2000: D. F. Close, C. J. Edgose
 Design: 2001: P. Carter
 Digital cartography: 1998-2002: P. Carter, B. Bosfield
 Original plot on demand created: 2002: 26th February 2002
 Latest edited plot created: 2002: 30th July 2002

The Northern Territory Government does not warrant this map as definitive, nor free from error and does not accept liability for the loss caused or arising from reliance upon information provided herein.

Produced by, and plot on demand created by Northern Territory Geological Survey, Cartographic Services, Department of Business, Industry and Resource Development, Alice Springs, Australia. Issued under the authority of the Minister for Business, Industry and Resource Development, the Honourable PAUL HENDERSON, M.L.A. Base map compiled by NTGS from 1:100 000 scale topographic data supplied by the National Mapping Division, Geoscience Australia, Department of Industry, Tourism and Resources.

This map is accompanied by a text publication: CLOSE, D.F., EDGOOSE, C.J., SCRIMGEOUR, I.R., 2002 Hull and Bloods Range 1:100 000 Geological Special, Northern Territory Geological Survey Explanatory Notes. It is recommended that this map be referred to as: CLOSE, D.F., EDGOOSE, C.J., SCRIMGEOUR, I.R., 2002 Bloods Range Special First Edition (1:100 000 scale geological map) Northern Territory Geological Survey, Alice Springs.

DIGITAL DATA: Map data are stored in Microstation format (DGN). Map information can be acquired from the NTGS as hardcopy plots under DOCUMENTS. Digital files: Information on how to acquire and release conditions is available from NTGS Sales Counter, 3rd floor Centrepoint Building, Darwin, Phone (08) 8991 6443 or Minerals House, Alice Springs. Phone (08) 8951 5558.

