



MASTER LOG

OZDELTA-1



Field : SOUTH GEORGINA BASIN
Permit : 128
State : NORTHERN TERRITORY
Country : AUSTRALIA
Scale: 1/ 500

Rotary Table: 279.2mAHD
Ground Level: 275.0mAHD
Datum: GDA 94
Lat. : 21°34'34.79"E
Long. : 136°40'35.50"S

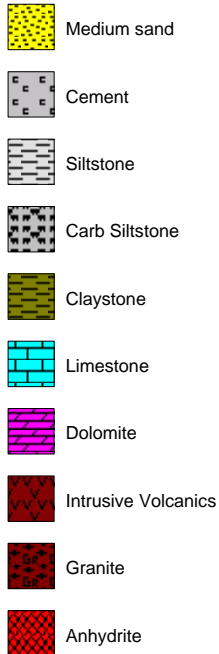
Rig : EDA-2
Spud Date : 20/06/2014
TD Date : 26/06/2014
Total Depth : 840.4m
Final Status : CASSED & SUSPENDED

Open Holes
12-1/4": 357.0m
7-7/8": 840.4m

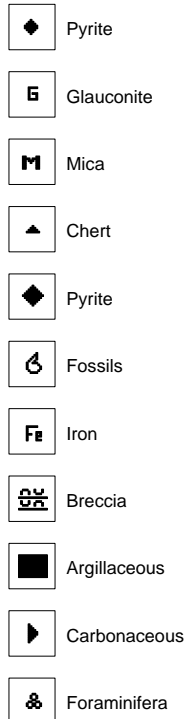
Cased Hole:
9-5/8": 355.44m
4-1/2": 837.05m

Loggers : DUC NGUYEN
ANDY PAPADOPOULOS
KOUROSH NIKKHAH
TIM BEECH

LITHOLOGY



ACCESSORIES



DRILLING DATA



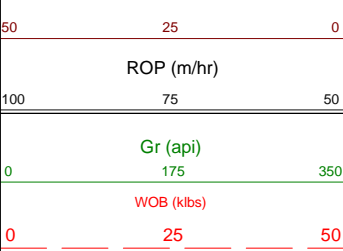
ABBREVIATIONS

BOPD	- Barrels of Oil Per Day	OG	- Over Gauge
BWPD	- Barrels of Water Per Day	OH	- Open Hole
CG	- Connection Gas	OTS	- Oil To Surface
CO	- Circulate Out	Q	- Flow Rate
COND	- Condensate	REC	- Recovery
c/c	- Crush Cut	Rmf	- Resistivity mud filtrate
DST	- Drill Stem Test	ROP	- Rate Of Penetration
FLOW	- Flow Rate (gal/min)	RPM	- Revolutions Per Minute
GCM	- Gas Cut Mud	RTSTM	- Rate Too Small To Measure
GCW	- Gas Cut Water	Rw	- Resistivity water
GTS	- Gas To Surface	r/r	- Ring Residue
INJ	- Injection of Mist (bbls/hr)	SCFM	- Standard Cubic Ft/Min (air)
LCM	- Lost Circulation Material	SGCM	- Slightly Gas Cut Mud
MMCFD	- Million Cubic Feet / Day	SPM	- Strokes Per Minute
NGTS	- No Gas To Surface	SPP	- Stand Pipe Pressure
NOTS	- No Oil To Surface	SWC	- Side-Wall Core
NR	- No Returns	TG	- Trip Gas
OCM	- Oil Cut Mud	WOB	- Weight On Bit

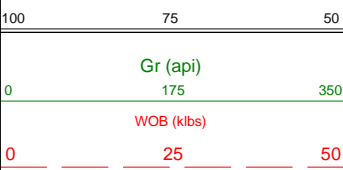
MUD DATA

MW - Mud Weight (lb/gal)
FV - Funnel Viscosity (s/qt)
PV - Plastic Viscosity (cps)
YP - Yield Point (lb/100ftsq)
Gel - Gel Strength (10sec)
WL - Water Loss (cc/30min)
pH - Acidity / Alkalinity
Ck - Cake (32nd/inch)
Sol - Solids (% vol)
Cl - Chlorides (mg/l)

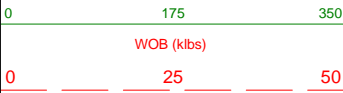
ROP (m/hr)



ROP (m/hr)



Gr (api)



WOB (klbs)



LITHOLOGY

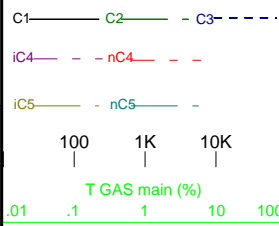
DEPTH

FLUOR

CUTTINGS

(%)

CHROMATOLOG (ppm)



ENGINEERING COMMENTS

GEOLOGICAL DESCRIPTIONS

20-06-2014

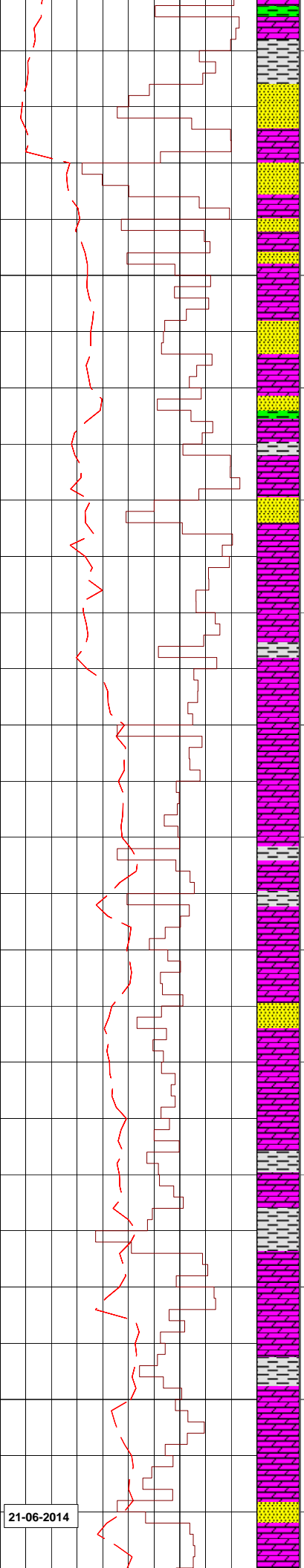
OZDELTA-1 SPURRED ON
20-06-14 @ 05:45HRS.

BIT 1:HALIBURTON MMD65DH
JETS:9X24
IN:15.5m OUT:357.0m
HRS:27.11 RUN:341.5m
COND:4-1-BT-C-X-1-BT-TD.

ARRINTHRUNGA FM:
4.2m MDRT (+275.0m TVDSS)

DOLOMITE:wh-yel,brn/yel,
wh-lt gry,vf micrXln,tr wh-
lt yel CHERT,tr slt,hd,nil vis
por,no fluor.

CLAYSTONE:brn/rd,pnk,slt aren,



12.25" SURFACE HOLE
DRILLED WITH GEL MUD.

WOB:5-20 klbs
RPM:60-107
SPP:20-250 psi
FLW:187-330 gpm

NO GAS

MW 8.4ppg
FV 26
YP 1
Gel 1/1
pH 8.5
Cl 600
Sol 0.5

WOB:14-24 klbs
RPM:64-107
SPP:96-757 psi
FLW:334-641 gpm

NO GAS

sli dol,hd,lam,nil vis por,
no fluor.

SILTSTONE:lt brn,lt gry-bl gry,
dk gry,tr blk,v aren,arg,sli
micromic,sli dol,lam,nil vis
por,no fluor.

SANDSTONE:wh,gry/wh,mnr pnk-
wh,qtz,pred f,med-vf,sbang-sbrnd,
mod-pr srt,mnr-com wh arg mtx,
tr pnk arg mtx,sil cmt,sli
dol cmt,fri-hd,nil-pr vis por,
no fluor.

DOLOMITE:wh-yel,brn/yel,
wh-lt gry,vf micrxln,tr wh-
lt yel CHERT,tr slt,hd,nil vis
por,no fluor.

DOLOMITE:wh-yel,brn/yel,
wh-lt gry,vf micrxln,tr wh-
lt yel CHERT,tr slt,hd,nil vis
por,no fluor.

SANDSTONE:wh,gry/wh,mnr pnk-
wh,qtz,pred f,med-vf,sbang-sbrnd,
mod-pr srt,mnr-com wh arg mtx,
tr pnk arg mtx,sil cmt,sli
dol cmt,fri-hd,nil-pr vis por,
no fluor.

SILTSTONE:lt gry,bl/grn-gry,
gry,blk-gry,aren,arg,micromica,
sli dol,hd,nil vis por,no fluor.

