

HAINES SURVEYS

GRAVITY SURVEY SPECIALISTS



Job No. 1163

HUCKITTA 2 GRAVITY SURVEY

Mithril Resources Ltd.

October - November 2011

PERTH
PO BOX 120
BULL CREEK, WA 6149
PERTH, AUSTRALIA
TEL: (08) 9332 2140
FAX: (08) 9332 2690
INTER: +618 9332 2140

ADELAIDE
PO BOX 196
ALDGATE SA 5154
ADELAIDE, AUSTRALIA
TEL (08) 8370 8779
FAX (08) 8370 8758
INTER: +618 8370 8779

Contents

Introduction	2
Location Diagram	3
Survey and Gravity Datum	5
Survey and Gravity Base Stations	5
Survey Control	5
Gravity Control	6
Survey and Gravity Control Values	6
GPS Observations and Processing	6
Gravity Observations	7
Point Numbering and Marking	7
Gravity Processing	8
Results Formats	10
Production Log	11
Repeat Observation Results	11
Bouguer – Elevation Profiles	13
Plots-	
Station Locations	15
Stations and Bouguer Anomaly Contours	16
Bouguer Anomaly Contours and Zoned Image	17
Processed Results	18

Introduction

A GPS gravity survey designated as Huckitta 2 Gravity Survey has been carried out in an area approximately 155 kilometres East of Alice Springs in the Northern Territory over 11 days from 23rd October 2011 to 2nd November 2011 on behalf of Mithril Resources Ltd.

The proposed Huckitta 2 Gravity Survey consisted of 517 gravity stations in an irregular grid comprising 38 South-North trending lines coincident with GDA94 with a line spacing of 400 metres and station intervals of 400 metres. The lines of irregular length were bounded in the west by GDA94 Zone 53 522800E, in the east by 537600E, in the south by 7375800N and in the north by 7392600N. The line lengths ranged from 400 metres to 11200 metres.

The completed Huckitta 2 Gravity Survey comprised of 495 stations in 38 lines. 22 gravity stations were omitted in the central section due to inaccessible terrain. Note; some of the stations may have been slightly offset from their planned position due to vegetation and terrain.

There were 19 observations repeated for quality control purposes, giving a repeat percentage of 3.8%. A further 13 'Old Survey' repeats were also completed for quality control purposes.

The Bouguer anomaly processing has been performed using a country rock density of 2.67 g/cc.

Figures 1 and 2 overleaf show the location of the survey area.



Figure 1. General Location Diagram

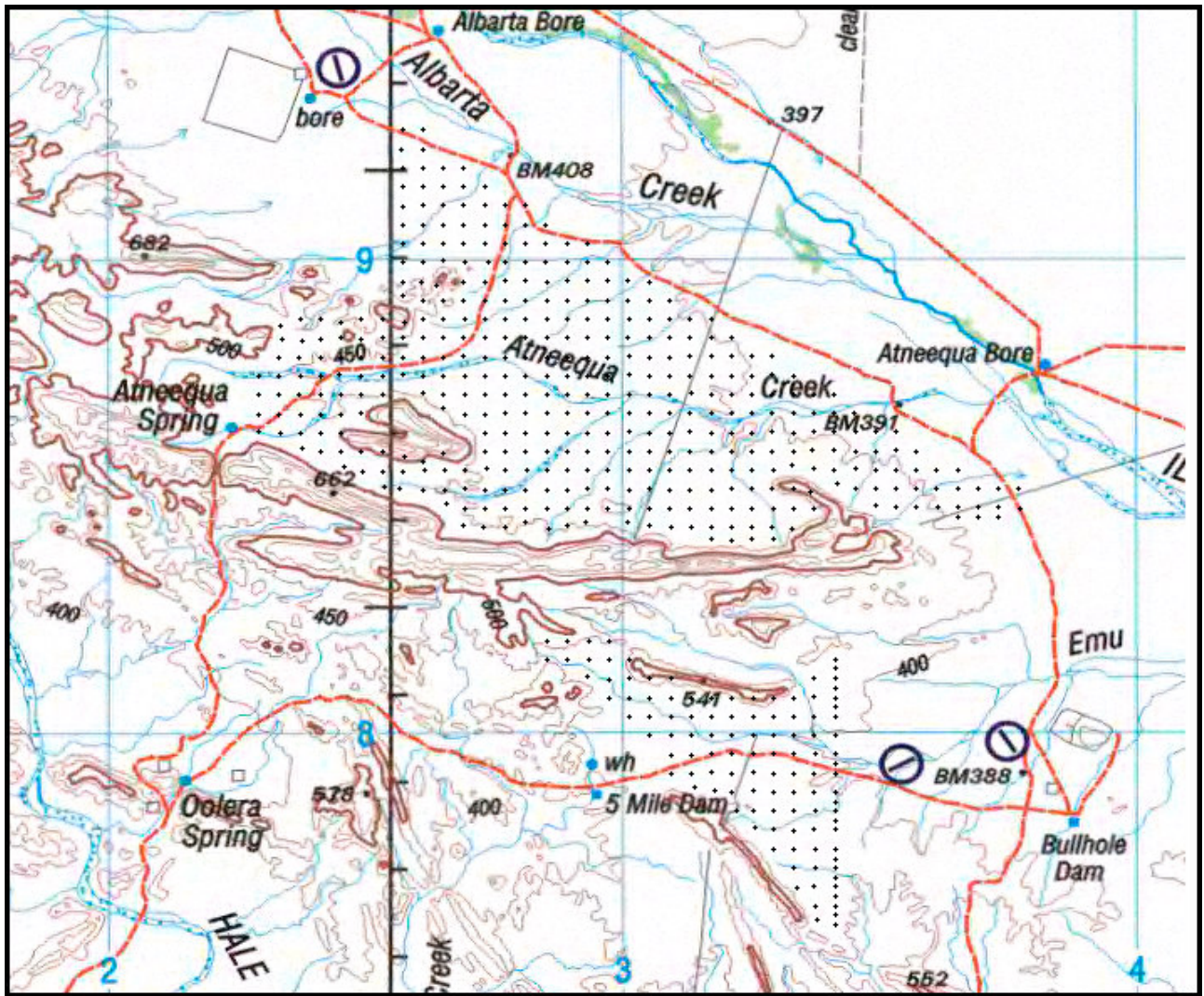


Figure 2. Detailed Location Diagram

GPS Survey and Gravity Datum

Horizontal Datum: Geocentric Datum of Australia1994 (GDA94)
 Map Grid of Australia 1994 (MGA94)
 Zone 53

Vertical Datum: Australian Height Datum (AHD)

Gravity Datum: Isogal 1984 / IGSN 71

Survey and Gravity Base Stations

Two base stations were established within the survey area. They were placed on elevated positions to provide good UHF radio coverage for the RTK system. The bases were designated as 2011.6301 and 2011.6302. The actual bases were marked with a short star picket driven flush with the natural surface. The bases were witnessed by 1m long star pickets within 0.3m of the ground marks. Single aluminum tags were attached to each witnessed post. These tags are inscribed "Haines Surveys" and "Gravity Base 2011.6301".

Survey Control

Horizontal and vertical control has been established using the AUSPOS online GPS processing service provided by Geoscience Australia. This method provides control within the GDA94 Datum to within +/- 5 cm. It largely replaces the need for finding local survey marks or allows accurate control to be established when local marks are not available.

A total of 44.7 hours (at 15 second intervals) of observations were logged over 6 days. The following outlines the Cartesian coordinate precision attained per day.

1 Sigma	sX(m)	sY(m)	sZ(m)	yyyy/mm/dd
6301	0.002	0.002	0.003	2011/10/23
6301	0.002	0.002	0.002	2011/10/24
6301	0.001	0.001	0.002	2011/10/25
6302	0.002	0.002	0.003	2011/10/27
6302	0.001	0.001	0.002	2011/10/28
6302	0.002	0.001	0.002	2011/10/29

Since GDA94 and WGS84 (Global Positioning System Datum) are virtually equivalent the GDA94 values can be directly input into the GPS processing software for all calculations.

Vertical control has been converted to an Australian Height Datum (AHD) height using the GDA94 height determined from AUSPOS and the AUSGEOID98 gravimetric geoid.

Gravity Control

Gravity control for base stations 2011.6301 and 2011.6302 was established on the Australian Fundamental Gravity Network (Isogal 1984 / IGSN 71) using a series of A-B-B-A ties from gravity station 2010.5301 (Job No. 1053 Oklo Gravity Survey). The values for 2010.5301 were attained from Haines Surveys Pty. Ltd. records.

Gravity ties were made throughout the entire survey, ensuring gravity control was established to within 0.01 milligals for both bases.

Survey and Gravity Control Values

Control information (**WGS84 heights have been derived using AusGeoid98**):

Station	GDA 94			MGA94 Zone 53		AHD	Isogal84	Comments
	Latitude	Longitude	Height	Easting	Northing	Height	Gravity mgal	
2011.6301	-23 41 44.02488	135 19 16.03597	434.372	532738.064	7379441.397	413.300	978737.927	Base 6301
2011.6302	-23 36 09.92145	135 17 36.48434	431.433	529939.930	7389722.070	410.065	978721.379	Base 6302
2010.5301	-23 24 07.17870	135 20 45.63150	469.966	535353.779	7411936.074	447.139	978723.780	Control

GPS Observations and Processing

Carrier phase GPS data has been collected using *Trimble 4000* series geodetic receivers.

Measurements to existing control have been made using Static techniques. All static baselines have been processed to double difference fixed solutions resulting in horizontal and vertical precision of approximately 2 cm.

Measurements for detail gravity observations have been made using Real Time Kinematic (RTK) techniques giving horizontal and vertical precision of at least 5 cm.

Static baseline processing has been done using Trimble GPSurvey Version 2.35 software and RTK processing using Trimble Geomatics Office Version 1.01 software.

Details of Horizontal and Vertical control are given in the sections above.

Gravity Observations

Gravity measurements have been made using *Scintrex CG5 Autograv* instruments. Instrument numbers 940349244 and 900249134 were used in this project.

Readings of 120 seconds were taken at each base station. Readings of 40 seconds were taken at all other gravity survey points.

Base station readings were taken at the beginning of the day and at the end of the day's fieldwork.

All Autograv instruments apply an instrument drift correction to its final gravity reading. Any residual drifts between base station readings are corrected by the gravity post processing software. The instruments also apply Earth Tide Corrections to their final gravity reading at each station. The various instrument calibration constants are contained in the daily gravity data files.

Point Numbering and Marking

The lines are South-North and the 8 digits are constructed from the planned GDA coordinates for each gravity station using

$$\text{Line No} = (\text{GDA E} - 500000) / 10$$

$$\text{Stn No} = (\text{GDA N} - 7300000) / 10$$

eg. Planned gravity station GDA coordinates

528000.000N

7383800.000E

$$\text{Line No} = 2800$$

$$\text{Station No} = 8380$$

$$\text{ie, Pt No} = 2800.8380$$

The gravity stations have not been marked in the field.

Gravity Processing

The gravity values for this survey are related to the *Australian Gravity Base Station Network* using the *Isogal84 (IGSN 71)* values at known Gravity Stations as provided by *DMR*.

Note that all gravity values shown in these surveys are expressed in units of milligals.

The field gravity observations have been processed using standard formulae and constants to produce a Bouguer Anomaly for each gravity station.

The meter reading as recorded in the raw Scintrex data file is corrected for instrument tilts, meter drift and Earth Tide. Post processing corrections are detailed below.

Drift

The residual drift between base station readings is calculated for each station reading proportionately by time. This is the drift value shown in the processing output.

$$\text{Drift} = [(t_1 - t_n) ((b_2 - b_1) / (t_2 - t_1))]$$

- t_n = time of meter reading at each station
- b_1 = base meter reading prior to station reading
- t_1 = time of base reading b_1
- b_2 = base meter reading after station reading
- t_2 = time of base reading b_2

Obs mgal

This is the observed gravity value in milligals.

$$\text{Obs} = b_g + (r_n - \text{drift}) - b_1$$

- b_g = base stn gravity value (Isogal84)
- r_n = meter reading at each station as shown in the CG3 .dat file
- drift = residual drift correction as shown above
- b_1 = base meter reading prior to station reading

Anom

This is the difference between the observed gravity and the theoretical gravity value at each station. The theoretical value is calculated using the *1967 International Gravity Formula*.

$$\text{Anom} = \text{Obs} - g_{\text{th}}$$

Obs = observed gravity as explained above

$$g_{\text{th}} = 978031.8 (1 + 0.0053024 \sin^2\phi - 0.0000059 \sin^2 2\phi)$$

ϕ = WGS84 Latitude

Freeair corrn

The freeair correction is calculated using

$$\text{Freeair corrn} = 0.3086 H$$

H = height above sea level (AHD height)

Bouguer corrn

$$\text{Bouguer corrn} = -0.04191 \rho H$$

ρ = density (2.67 g/cc used for this survey)

H = height above sea level (AHD height)

Bouguer Anom

$$\text{Bouguer Anom} = \text{Anom} + \text{Freeair corrn} + \text{Bouguer corrn}$$

Results Formats

Printed results of the gravity processing (with Bouguer corrections at density 2.67 g/cc) are included in the Appendix of this report. The results are also supplied in digital form on CD with the following file supplied.

1163 Huckitta 2.csv

1163 Huckitta 2.csv Format

This is a Comma Separated Variable format file. This format facilitates data import into spreadsheet and database software. Each record (line) contains the following data fields:

"Pt#"	Station identifiers used in data loggers, line and station numbers combined
"Line"	Station line number
"Stn"	Station number
"Date"	Date of observation
"Day"	GPS day number
"Time"	Time of observation
"GDA94_Lat"	WGS84/GDA94 Latitude used in GPS observation
"GDA94_Long"	WGS84/GDA94 Longitude used in GPS observation
"GDA94_Ht"	Height above the ellipsoid defined by the WGS84 Datum
"MGA94(ZONE53)E"	Easting value for observation on the MGA94/GDA94 Datum
"MGA94(ZONE53)N"	Northing value for observation on the MGA94/GDA94 Datum
"AHD_Ht"	Height of observation in the Australian Height Datum
"Meter_Ser_No"	Gravity meter serial number
"Meter_Rdg"	Gravity meter observation value in mGals
"Meter_Error"	Measurement of the quality of the gravity observation (a function of the SD of the observation set used and the duration of the set)
"ETC"	Earth Tide Correction applied to the gravity observation
"Drift"	The component of the meter drift between opening and closing gravity base observations applied to the observation
"Corr_Meter"	The meter observation with the drift applied
"dg"	The difference in gravity between the base and the observation
"Obs_g"	Observed gravity of the station
"Anom"	Difference between observed and theoretical gravity
"Freeair"	Free air correction (see above)
"Bouguer(2.67)"	Bouguer correction using a density of 2.67g/cc (see above)
"Bouguer_Anom"	Bouguer anomaly (see above)

Field gravity observation files with the extension .DAT and .DC are also supplied in a subdirectory named 'Raw Data'.

*.DAT

These are the raw data files from the *Scintrex CG5* gravimeter. There is a separate file for each day's data. The files are identified by the Julian day number (001 = Jan 1st) with the prefix G. eg. G115 = day 115 (25th April).

*.DC

These are the GPS Real Time Kinematic Data Collector files. They are ASCII format files containing the GPS vectors from the base station. The data is structured in a Trimble format (DC file Version 7).

Production Log

Date	Day #	Obs	Repeats	Crews	Comments
23/10/2011	296	11	0	1	Base 2011.6301 established
24/10/2011	297	33	10	1	
25/10/2011	298	38	4	1	
26/10/2011	299	38	2	1	Southern Block completed
27/10/2011	300	55	2	1	Base 2011.6302 established
28/10/2011	301	61	2	1	
29/10/2011	302	48	5	1	
30/10/2011	303	65	2	1	
31/10/2011	304	51	2	1	
1/11/2011	305	52	2	1	
2/11/2011	306	43	1	1	Survey Completed
	Total	495	32		

Repeat Observation Results

HUCKITTA 2 GRAVITY SURVEY

Pt #	Day	E	N	H	G	Bouguer
36408440	D109	536,395.551	7,384,401.850	399.634	978,732.882	-51.757
36408440	D302	536,395.788	7,384,401.817	399.597	978,732.932	-51.714
		-0.237	+0.033	+0.037	-0.050	-0.043
36808440	D109	536,797.849	7,384,399.278	392.217	978,734.176	-51.923
36808440	D302	536,797.773	7,384,399.222	392.259	978,734.204	-51.887
		+0.076	+0.056	-0.042	-0.028	-0.036
37208440	D109	537,200.373	7,384,396.794	387.933	978,735.199	-51.743
37208440	D302	537,200.202	7,384,396.664	387.929	978,735.221	-51.722
		+0.171	+0.130	+0.004	-0.022	-0.021
34007600	D112	533,997.319	7,375,994.311	407.522	978,742.349	-45.784
34007600	D297	533,997.197	7,375,994.072	407.531	978,742.375	-45.757
		+0.122	+0.239	-0.009	-0.026	-0.027
34007640	D112	534,005.837	7,376,394.909	411.659	978,740.907	-46.172
34007640	D297	534,005.931	7,376,394.953	411.748	978,740.915	-46.146
		-0.094	-0.044	-0.089	-0.008	-0.026
34007680	D112	533,994.598	7,376,803.125	405.253	978,741.900	-46.194
34007680	D297	533,994.666	7,376,802.834	405.305	978,741.922	-46.162
		-0.068	+0.291	-0.052	-0.022	-0.032
34007720	D112	533,995.774	7,377,194.759	404.884	978,741.684	-46.247
34007720	D297	533,995.857	7,377,194.609	404.889	978,741.710	-46.220
		-0.083	+0.150	-0.005	-0.026	-0.027
34007800	D112	533,999.605	7,377,996.653	404.739	978,741.401	-46.078
34007800	D297	533,999.674	7,377,996.418	404.716	978,741.413	-46.070
		-0.069	+0.235	+0.023	-0.012	-0.008
34007840	D112	534,000.323	7,378,396.734	403.653	978,741.289	-46.163
34007840	D297	534,000.496	7,378,396.810	403.609	978,741.310	-46.151
		-0.173	-0.076	+0.044	-0.021	-0.012

34007920	D113	533,998.258	7,379,206.999	399.709	978,741.066	-46.676
34007920	D297	533,997.790	7,379,206.815	399.724	978,741.093	-46.646
		+0.468	+0.184	-0.015	-0.027	-0.030
34008040	D113	534,000.421	7,380,399.863	402.885	978,739.168	-47.233
34008040	D297	534,000.481	7,380,399.475	402.946	978,739.201	-47.189
		-0.060	+0.388	-0.061	-0.033	-0.044
34008080	D113	534,000.104	7,380,800.497	404.738	978,738.499	-47.298
34008080	D298	534,000.085	7,380,800.432	404.775	978,738.518	-47.271
		+0.019	+0.065	-0.037	-0.019	-0.027
34008120	D113	533,999.349	7,381,200.409	406.429	978,737.687	-47.537
34008120	D298	533,999.380	7,381,200.652	406.448	978,737.704	-47.516
		-0.031	-0.243	-0.019	-0.017	-0.021
32807940	D296	532,804.346	7,379,397.883	412.102	978,738.228	-46.963
32807940	D297	532,804.342	7,379,397.705	412.079	978,738.236	-46.960
		+0.004	+0.178	+0.023	-0.008	-0.003
33608020	D296	533,600.945	7,380,203.947	402.604	978,739.330	-47.245
33608020	D297	533,600.737	7,380,203.878	402.607	978,739.338	-47.236
		+0.208	+0.069	-0.003	-0.008	-0.009
32807900	D297	532,802.733	7,378,999.619	409.627	978,738.961	-46.956
32807900	D298	532,802.608	7,378,999.494	409.668	978,738.974	-46.935
		+0.125	+0.125	-0.041	-0.013	-0.021
34008020	D297	534,000.140	7,380,196.218	401.886	978,739.546	-47.174
34008020	D298	534,000.071	7,380,196.280	401.855	978,739.536	-47.190
		+0.069	-0.062	+0.031	+0.010	+0.016
30807940	D298	530,799.102	7,379,396.133	422.683	978,736.006	-47.107
30807940	D299	530,798.983	7,379,395.546	422.653	978,736.001	-47.119
		+0.119	+0.587	+0.030	+0.005	+0.012
31207940	D298	531,200.807	7,379,391.832	422.009	978,736.486	-46.762
31207940	D299	531,201.338	7,379,391.029	422.036	978,736.492	-46.751
		-0.531	+0.803	-0.027	-0.006	-0.011
29608980	D299	529,600.691	7,389,795.307	409.636	978,721.588	-57.864
29608980	D300	529,600.855	7,389,795.234	409.656	978,721.582	-57.867
		-0.164	+0.073	-0.020	+0.006	+0.003
30008940	D299	529,999.753	7,389,398.091	407.900	978,722.648	-57.383
30008940	D300	529,999.680	7,389,398.276	407.885	978,722.657	-57.377
		+0.073	-0.185	+0.015	-0.009	-0.006
29208980	D300	529,199.298	7,389,795.071	412.966	978,720.935	-57.863
29208980	D303	529,199.180	7,389,795.217	412.968	978,720.926	-57.871
		+0.118	-0.146	-0.002	+0.009	+0.008
29209020	D300	529,201.220	7,390,196.445	410.480	978,720.287	-58.760
29209020	D303	529,201.090	7,390,196.360	410.488	978,720.312	-58.733
		+0.130	+0.085	-0.008	-0.025	-0.027
30408940	D300	530,397.772	7,389,387.844	407.898	978,722.590	-57.447
30408940	D301	530,397.815	7,389,387.843	407.906	978,722.586	-57.449
		-0.043	+0.001	-0.008	+0.004	+0.002

30808900	D300	530,801.955	7,388,995.019	405.192	978,724.048	-56.756
30808900	D301	530,801.881	7,388,994.888	405.199	978,724.062	-56.740
		+0.074	+0.131	-0.007	-0.014	-0.016
32808780	D301	532,802.382	7,387,794.582	399.326	978,726.755	-55.918
32808780	D302	532,802.324	7,387,794.465	399.329	978,726.737	-55.936
		+0.058	+0.117	-0.003	+0.018	+0.018
33208580	D301	533,199.543	7,385,796.994	416.195	978,728.120	-52.430
33208580	D302	533,199.763	7,385,797.191	416.159	978,728.146	-52.411
		-0.220	-0.197	+0.036	-0.026	-0.019
27608860	D303	527,595.904	7,388,599.763	425.199	978,723.604	-53.505
27608860	D304	527,596.084	7,388,599.802	425.213	978,723.602	-53.504
		-0.180	-0.039	-0.014	+0.002	-0.001
27608940	D303	527,599.788	7,389,400.238	420.297	978,721.109	-56.485
27608940	D304	527,599.898	7,389,400.254	420.335	978,721.144	-56.442
		-0.110	-0.016	-0.038	-0.035	-0.043
26808820	D304	526,797.883	7,388,203.148	429.248	978,725.744	-50.806
26808820	D305	526,797.858	7,388,203.120	429.234	978,725.746	-50.807
		+0.025	+0.028	+0.014	-0.002	+0.001
27208860	D304	527,201.312	7,388,599.301	425.809	978,724.328	-52.661
27208860	D305	527,201.147	7,388,599.110	425.817	978,724.294	-52.694
		+0.165	+0.191	-0.008	+0.034	+0.033
25208780	D305	525,199.797	7,387,800.477	438.357	978,725.526	-49.475
25208780	D306	525,199.929	7,387,800.462	438.341	978,725.557	-49.447
		-0.132	+0.015	+0.016	-0.031	-0.028

Bouguer – Elevation Profiles

Please refer to the folder titled 'Bouguer – Elevation Profiles' on the accompanying CD for bit map images of all the lines completed throughout the project.

1163 Huckitta 2 GS, Bouguer – Elevation Profiles available for the following lines:

Line
2280
2320
2360
2400
2440
2480
2520
2560
2600
2640

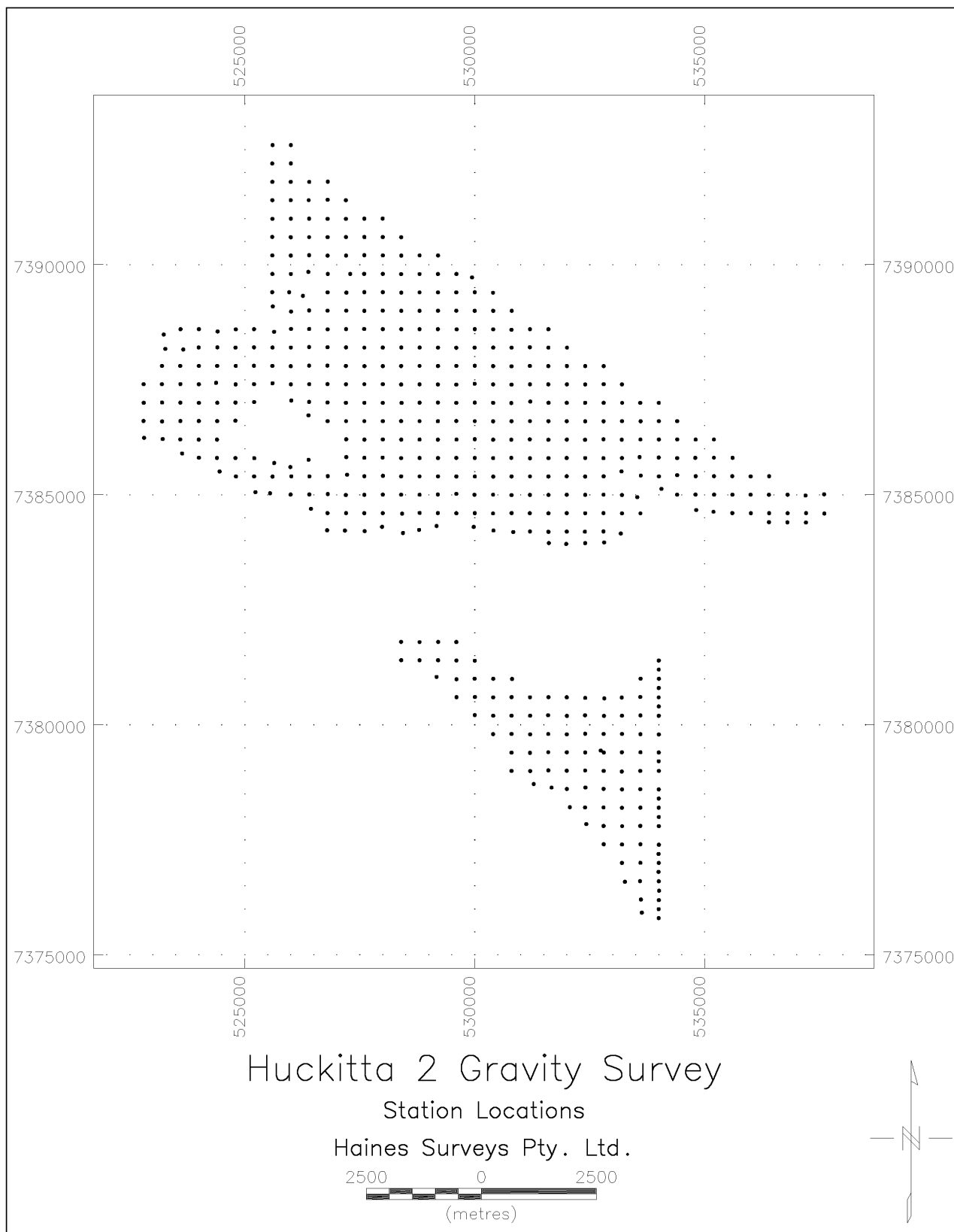
Line
2680
2720
2760
2800
2840
2880
2920
2960
3000
3040

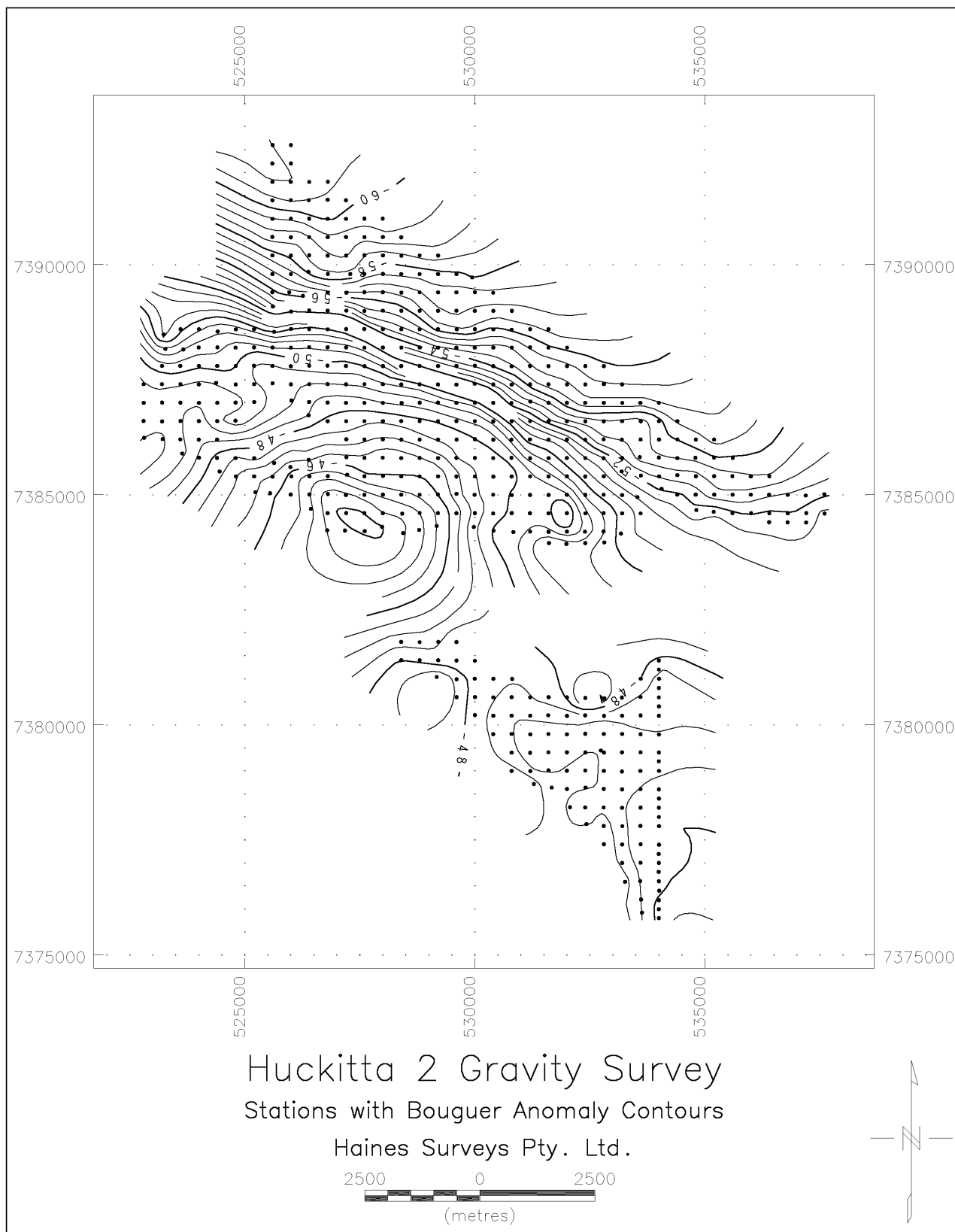
Line
3080
3120
3160
3200
3240
3280
3320
3360
3400

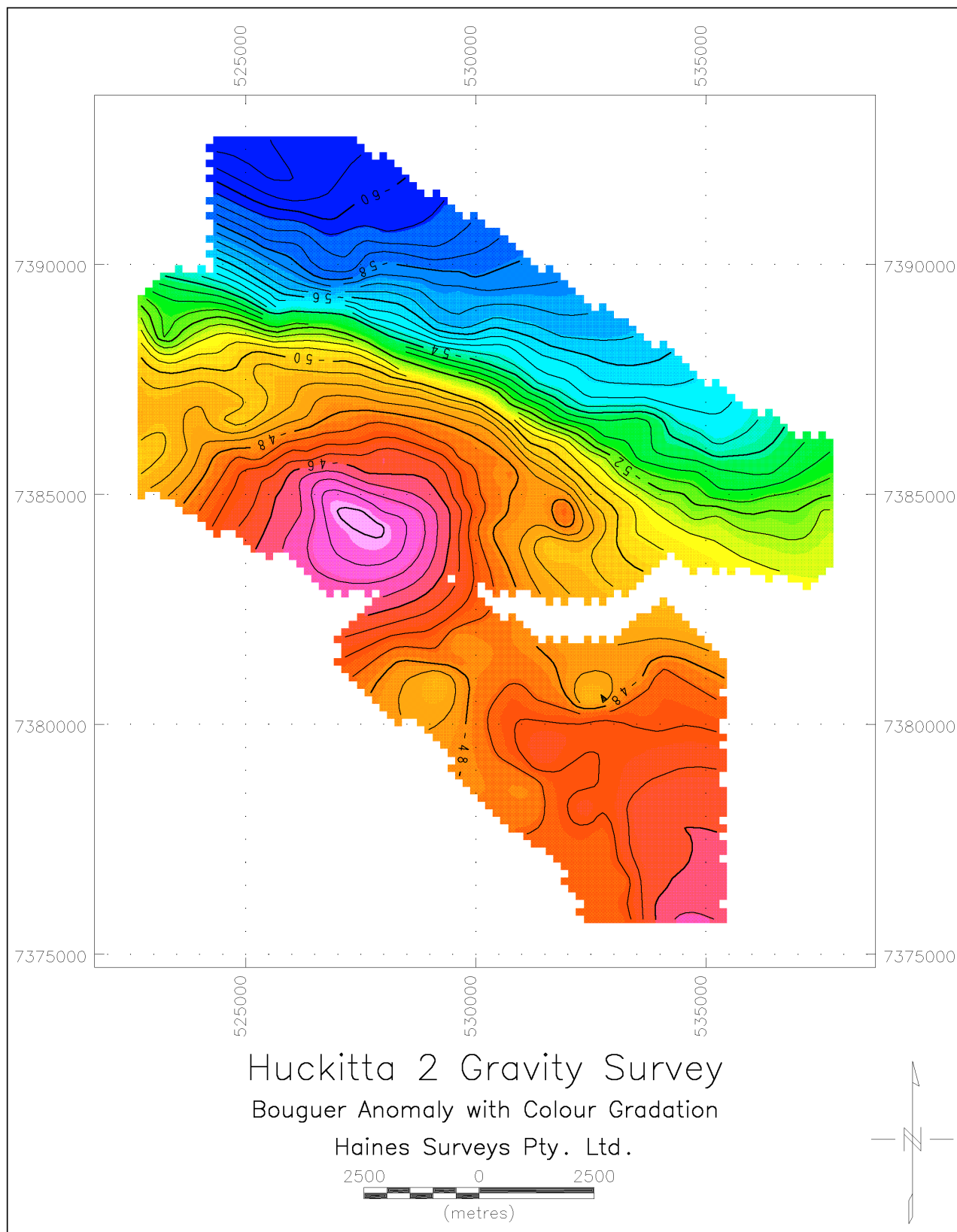
Line
3440
3480
3520
3560
3600
3640
3680
3720
3760

Plots

Station Locations	15
Stations and Bouguer Anomaly Contours	16
Bouguer Anomaly Contours and Zoned Image	17
Processed Results	18







PROCESSED RESULTS

HUCKITTA 2 GRAVITY SURVEY

/	COORDS			GRID	drift	corr'd	obs	anom	freeair	bouguer	bouguer	height
/	E	N	x	y	meter	mgal		corr'n	corr'n	anom	(AHD)	
/	(2.67)											
/D296												
532738.1	7379441.4		0	6301	+0.000	2965.513	978737.927	-128.299	127.544	-46.248	-47.002	413.300
532738.1	7379441.4		0	6301	+0.006	2965.513	978737.927	-128.299	127.544	-46.248	-47.002	413.300
532738.1	7379441.4		0	6301	+0.364	2965.507	978737.927	-128.299	127.544	-46.248	-47.002	413.300
532738.1	7379441.4		0	6301	+0.001	2965.143	978737.927	-128.299	127.544	-46.248	-47.002	413.300
532804.3	7379397.9		3280	7940	+0.133	2965.808	978738.228	-128.024	127.175	-46.114	-46.963	412.102
532800.7	7379800.7		3280	7980	+0.151	2966.807	978739.227	-126.783	125.287	-45.430	-46.926	405.985
532808.9	7380194.2		3280	8020	+0.168	2966.481	978738.901	-126.873	125.233	-45.410	-47.050	405.809
532815.0	7380574.7		3280	8060	+0.185	2959.697	978732.117	-133.429	132.625	-48.090	-48.894	429.764
533197.4	7379402.4		3320	7940	+0.257	2967.078	978739.498	-126.750	125.311	-45.438	-46.877	406.064
533201.1	7379801.3		3320	7980	+0.242	2967.166	978739.586	-126.423	124.586	-45.175	-47.013	403.712
533200.3	7380196.8		3320	8020	+0.224	2966.855	978739.275	-126.497	124.595	-45.179	-47.080	403.744
533194.1	7380592.2		3320	8060	+0.207	2963.710	978736.130	-129.405	128.034	-46.426	-47.797	414.886
533602.4	7379403.2		3360	7940	+0.273	2967.823	978740.243	-126.004	124.227	-45.405	-46.823	402.551
533602.4	7379795.7		3360	7980	+0.289	2967.530	978739.950	-126.062	124.179	-45.028	-46.911	402.395
533600.9	7380203.9		3360	8020	+0.306	2966.910	978739.330	-126.437	124.244	-45.051	-47.245	402.604
/D297												
532738.1	7379441.4		0	6301	+0.000	2967.128	978737.927	-128.299	127.544	-46.248	-47.002	413.300
532738.1	7379441.4		0	6301	+0.009	2967.128	978737.927	-128.299	127.544	-46.248	-47.002	413.300
532738.1	7379441.4		0	6301	+0.833	2967.119	978737.927	-128.299	127.544	-46.248	-47.002	413.300
532738.1	7379441.4		0	6301	+0.003	2966.286	978737.927	-128.299	127.544	-46.248	-47.002	413.300
532803.4	7377404.7		3280	7740	+0.153	2965.125	978735.933	-131.515	131.970	-47.853	-47.398	427.642
532800.9	7377801.4		3280	7780	+0.133	2966.650	978737.458	-129.752	129.547	-46.974	-47.179	419.790
532799.0	7378202.8		3280	7820	+0.117	2967.189	978737.997	-128.972	128.564	-46.618	-47.026	416.603
532800.0	7378608.2		3280	7860	+0.101	2967.704	978738.512	-128.213	127.445	-46.212	-46.980	412.979
532802.7	7378999.6		3280	7900	+0.081	2968.153	978738.961	-127.530	126.411	-45.837	-46.956	409.627
532804.3	7379397.7		3280	7940	+0.065	2967.428	978738.236	-128.016	127.168	-46.112	-46.960	412.079
533264.9	7376590.2		3320	7660	+0.197	2962.903	978733.711	-134.225	136.376	-49.450	-47.300	441.917
533200.4	7376999.2		3320	7700	+0.221	2968.127	978738.935	-128.756	128.619	-46.638	-46.774	416.783
533200.9	7377398.9		3320	7740	+0.239	2968.402	978739.210	-128.241	128.071	-46.439	-46.609	415.007
533204.0	7377797.9		3320	7780	+0.251	2968.733	978739.541	-127.670	127.105	-46.089	-46.654	411.875
533199.4	7378197.1		3320	7820	+0.266	2968.868	978739.676	-127.296	126.699	-45.941	-46.539	410.559
533200.8	7378596.7		3320	7860	+0.279	2968.833	978739.641	-127.091	126.090	-45.721	-46.722	408.586
533197.3	7378983.8		3320	7900	+0.294	2968.994	978739.802	-126.698	125.356	-45.455	-46.796	406.209
533631.2	7375918.3		3360	7580	+0.467	2967.599	978738.407	-129.932	130.734	-47.405	-46.603	423.637
533612.9	7376203.3		3360	7620	+0.448	2968.267	978739.075	-129.093	129.599	-46.999	-46.487	419.959
533592.3	7376604.3		3360	7660	+0.421	2967.750	978738.558	-129.369	130.089	-47.171	-46.451	421.547
533600.0	7377002.2		3360	7700	+0.392	2969.725	978740.533	-127.155	126.774	-45.969	-46.350	410.804
533601.8	7377402.8		3360	7740	+0.379	2969.547	978740.355	-127.093	126.663	-45.929	-46.358	410.444
533597.8	7377803.2		3360	7780	+0.362	2969.707	978740.515	-126.693	126.216	-45.766	-46.243	408.995
533599.3	7378200.2		3360	7820	+0.348	2969.665	978740.473	-126.496	125.947	-45.669	-46.218	408.125
533598.8	7378600.7		3360	7860	+0.334	2969.641	978740.449	-126.280	125.189	-45.394	-46.485	405.668
533597.5	7378998.3		3360	7900	+0.318	2969.918	978740.726	-125.764	124.136	-45.012	-46.641	402.255
533600.7	7380203.9		3360	8020	+0.811	2968.530	978739.338	-126.429	124.245	-45.052	-47.236	402.607
533998.9	7375800.2		3400	7580	+0.487	2971.460	978742.268	-126.141	126.012	-45.693	-45.822	408.335
533997.2	7375994.1		3400	7600	+0.515	2971.567	978742.375	-125.918	125.764	-45.603	-45.757	407.531
534000.4	7376189.6		3400	7620	+0.529	2971.539	978742.347	-125.829	125.453	-45.490	-45.865	406.523
534005.9	7376395.0		3400	7640	+0.548	2970.107	978740.915	-127.137	127.065	-46.074	-46.146	411.748
534000.4	7376599.3		3400	7660	+0.558	2971.405	978742.213	-125.717	124.952	-45.308	-46.072	404.901
533994.7	7376802.8		3400	7680	+0.570	2971.114	978741.922	-125.885	125.077	-45.354	-46.162	405.305
534000.4	7376999.1		3400	7700	+0.583	2970.964	978741.772	-125.918	124.926	-45.299	-46.290	404.815
533995.9	7377194.6		3400	7720	+0.597	2970.902	978741.710	-125.862	124.949	-45.307	-46.220	404.889
534001.6	7377394.7		3400	7740	+0.615	2970.600	978741.408	-126.044	125.258	-45.419	-46.205	405.891
534001.0	7377799.1		3400	7780	+0.628	2970.188	978740.996	-126.213	125.837	-45.629	-46.005	407.767
533999.7	7377996.4		3400	7800	+0.644	2970.605	978741.413	-125.678	124.895	-45.288	-46.070	404.716
534000.0	7378198.5		3400	7820	+0.655	2970.766	978741.574	-125.396	124.367	-45.096	-46.124	403.005
534000.5	7378396.8		3400	7840	+0.677	2970.502	978741.310	-125.541	124.554	-45.164	-46.151	403.609
534000.2	7378596.6		3400	7860	+0.690	2970.293	978741.101	-125.630	124.503	-45.145	-46.273	403.443
534000.6	7378998.0		3400	7900	+0.702	2970.038	978740.846	-125.644	123.992	-44.960	-46.612	401.790
533997.8	7379206.8		3400	7920	+0.715	2970.285	978741.093	-125.272	123.355	-44.729	-46.646	399.724

534000.4	7379398.3	3400	7940	+0.729	2969.937	978740.745	-125.505	123.626	-44.827	-46.706	400.604
534001.3	7379789.8	3400	7980	+0.742	2969.572	978740.380	-125.635	123.372	-44.735	-46.998	399.780
534000.1	7380196.2	3400	8020	+0.757	2968.738	978739.546	-126.225	124.022	-44.971	-47.174	401.886
534000.5	7380399.5	3400	8040	+0.770	2968.393	978739.201	-126.448	124.349	-45.090	-47.189	402.946
/D298											
532738.1	7379441.4	0	6301	+0.000	2968.602	978737.927	-128.299	127.544	-46.248	-47.002	413.300
532738.1	7379441.4	0	6301	+0.003	2968.602	978737.927	-128.299	127.544	-46.248	-47.002	413.300
532738.1	7379441.4	0	6301	+0.860	2968.599	978737.927	-128.299	127.544	-46.248	-47.002	413.300
532738.1	7379441.4	0	6301	+0.006	2967.739	978737.927	-128.299	127.544	-46.248	-47.002	413.300
530798.1	7378996.5	3080	7900	+0.813	2966.684	978736.012	-130.483	129.922	-47.110	-47.672	421.003
530799.1	7379396.1	3080	7940	+0.795	2966.678	978736.006	-130.249	130.440	-47.298	-47.107	422.683
530798.1	7379801.8	3080	7980	+0.782	2967.785	978737.113	-128.899	128.461	-46.580	-47.019	416.269
530798.5	7380197.4	3080	8020	+0.768	2967.351	978736.679	-129.096	128.744	-46.683	-47.035	417.187
530799.5	7380601.0	3080	8060	+0.753	2966.554	978735.882	-129.651	129.357	-46.905	-47.199	419.173
530809.8	7380996.0	3080	8100	+0.739	2963.953	978733.281	-132.015	132.487	-48.040	-47.568	429.317
531280.8	7378712.2	3120	7860	+0.626	2960.169	978729.497	-137.168	140.295	-50.872	-47.745	454.617
531205.1	7378994.8	3120	7900	+0.649	2965.216	978734.544	-131.952	133.222	-48.307	-47.036	431.699
531200.8	7379391.8	3120	7940	+0.673	2967.158	978736.486	-129.771	130.232	-47.223	-46.762	422.009
531203.6	7379793.6	3120	7980	+0.688	2968.283	978737.611	-128.405	127.983	-46.407	-46.830	414.721
531202.2	7380197.3	3120	8020	+0.703	2967.963	978737.291	-128.483	127.685	-46.299	-47.097	413.757
531200.1	7380597.0	3120	8060	+0.718	2966.577	978735.905	-129.630	128.824	-46.712	-47.518	417.446
531669.5	7378635.9	3160	7860	+0.595	2961.784	978731.112	-135.598	138.719	-50.300	-47.179	449.512
531599.6	7379009.4	3160	7900	+0.573	2966.369	978735.697	-130.789	131.603	-47.720	-46.906	426.452
531598.0	7379403.3	3160	7940	+0.558	2967.860	978737.188	-129.062	129.228	-46.859	-46.693	418.755
531598.3	7379800.7	3160	7980	+0.543	2968.624	978737.952	-128.060	127.546	-46.249	-46.763	413.304
531595.1	7380208.3	3160	8020	+0.528	2968.209	978737.537	-128.230	127.100	-46.087	-47.217	411.859
531603.0	7380600.5	3160	8060	+0.514	2966.333	978735.661	-129.871	129.000	-46.776	-47.647	418.018
532067.2	7378209.3	3200	7820	+0.356	2964.527	978733.855	-133.111	135.296	-49.059	-46.874	438.420
532001.0	7378605.4	3200	7860	+0.393	2965.663	978734.991	-131.737	132.802	-48.155	-47.090	430.338
531999.0	7379002.1	3200	7900	+0.407	2967.164	978736.492	-129.998	130.146	-47.191	-47.044	421.729
532000.8	7379401.4	3200	7940	+0.422	2968.389	978737.717	-128.534	128.107	-46.452	-46.879	415.123
532000.7	7379792.3	3200	7980	+0.435	2969.165	978738.493	-127.523	126.620	-45.913	-46.816	410.306
532001.0	7380193.4	3200	8020	+0.450	2968.655	978737.983	-127.793	126.414	-45.838	-47.217	409.637
532000.1	7380598.6	3200	8060	+0.465	2965.811	978735.139	-130.394	129.325	-46.894	-47.963	419.069
532425.9	7377841.9	3240	7780	+0.328	2966.113	978735.441	-131.745	133.045	-48.243	-46.943	431.123
532397.4	7378203.8	3240	7820	+0.307	2967.541	978736.869	-130.100	130.991	-47.498	-46.607	424.468
532405.3	7378638.3	3240	7860	+0.287	2967.219	978736.547	-130.161	130.396	-47.282	-47.047	422.540
532399.6	7379007.3	3240	7900	+0.273	2968.003	978737.331	-129.156	128.752	-46.686	-47.090	417.212
532400.3	7379398.0	3240	7940	+0.252	2968.877	978738.205	-128.047	127.156	-46.107	-46.998	412.042
532399.3	7379804.8	3240	7980	+0.239	2969.511	978738.839	-127.169	125.889	-45.648	-46.928	407.935
532397.0	7380205.2	3240	8020	+0.224	2968.936	978738.264	-127.504	125.816	-45.622	-47.309	407.700
532400.1	7380584.8	3240	8060	+0.207	2963.417	978732.745	-132.795	130.787	-47.424	-49.433	423.806
532802.6	7378999.5	3280	7900	+0.848	2969.646	978738.974	-127.517	126.424	-45.842	-46.935	409.668
533599.2	7380605.2	3360	8060	+0.169	2969.040	978738.368	-127.159	125.085	-45.357	-47.430	405.332
533603.5	7381001.2	3360	8100	+0.154	2967.832	978737.160	-128.129	125.612	-45.548	-48.064	407.039
534000.1	7380196.3	3400	8020	+0.071	2970.208	978739.536	-126.235	124.012	-44.967	-47.190	401.855
533998.0	7380595.7	3400	8060	+0.079	2969.537	978738.865	-126.667	124.653	-45.200	-47.213	403.932
534000.1	7380800.4	3400	8080	+0.095	2969.190	978738.518	-126.891	124.914	-45.294	-47.271	404.775
534003.0	7380999.3	3400	8100	+0.103	2968.948	978738.276	-127.014	124.963	-45.312	-47.363	404.936
533999.4	7381200.7	3400	8120	+0.117	2968.376	978737.704	-127.465	125.430	-45.481	-47.516	406.448
534000.3	7381396.9	3400	8140	+0.131	2967.078	978736.406	-128.645	126.682	-45.936	-47.898	410.507
/D299											
532738.1	7379441.4	0	6301	+0.000	2970.049	978737.927	-128.299	127.544	-46.248	-47.002	413.300
532738.1	7379441.4	0	6301	+0.004	2970.049	978737.927	-128.299	127.544	-46.248	-47.002	413.300
532738.1	7379441.4	0	6301	+0.463	2970.045	978737.927	-128.299	127.544	-46.248	-47.002	413.300
532738.1	7379441.4	0	6301	+0.007	2969.582	978737.927	-128.299	127.544	-46.248	-47.002	413.300
528399.4	7381404.1	2840	8140	+0.395	2960.473	978728.355	-136.699	139.125	-50.447	-48.021	450.827
528397.7	7381802.2	2840	8180	+0.381	2961.188	978729.070	-135.745	138.704	-50.295	-47.336	449.462
528799.7	7381401.1	2880	8140	+0.346	2960.446	978728.328	-136.727	139.269	-50.500	-47.958	451.293
528799.1	7381796.8	2880	8180	+0.362	2961.239	978729.121	-135.697	138.768	-50.318	-47.247	449.671
529170.4	7381039.7	2920	8100	+0.325	2956.959	978724.841	-140.431	143.276	-51.953	-49.107	464.278
529202.2	7381402.3	2920	8140	+0.310	2963.868	978731.750	-133.304	134.493	-48.768	-47.579	435.816
529203.6	7381800.4	2920	8180	+0.296	2962.525	978730.407	-134.409	136.498	-49.495	-47.405	442.315
529602.5	7380600.0	2960	8060	+0.228	2962.947	978730.829	-134.706	135.349	-49.078	-48.435	438.590
529602.2	7380990.8	2960	8100	+0.252	2964.545	978732.427	-132.873	132.667	-48.106	-48.312	429.900
529600.5	7381396.6	2960	8140	+0.267	2964.671	978732.553	-132.504	133.068	-48.251	-47.687	431.200
529599.7	7381799.1	2960	8180	+0.282	2962.178	978730.060	-134.756	135.802	-49.242	-48.196	440.059
529999.6	7380209.9	3000	8020	+0.209	2966.374	978734.256	-131.512	131.385	-47.641	-47.768	425.744

530002.7	7380602.8	3000	8060	+0.194	2964.866	978732.748	-132.785	133.430	-48.382	-47.737	432.371
529997.4	7381002.9	3000	8100	+0.179	2965.575	978733.457	-131.836	131.757	-47.776	-47.854	426.951
529999.5	7381391.3	3000	8140	+0.161	2963.233	978731.115	-133.945	134.935	-48.928	-47.938	437.250
530399.5	7379796.9	3040	7980	+0.087	2967.989	978735.871	-130.145	129.849	-47.084	-47.380	420.767
530400.7	7380196.8	3040	8020	+0.107	2967.763	978735.645	-130.131	129.924	-47.111	-47.317	421.012
530400.0	7380595.9	3040	8060	+0.119	2967.358	978735.240	-130.296	129.924	-47.063	-47.568	420.582
530401.7	7380999.9	3040	8100	+0.134	2965.463	978733.345	-131.949	132.067	-47.888	-47.770	427.956
530799.0	7379395.5	3080	7940	+0.068	2968.119	978736.001	-130.255	130.431	-47.295	-47.119	422.653
531201.3	7379391.0	3120	7940	+0.446	2968.610	978736.492	-129.766	130.240	-47.226	-46.751	422.036

/D299

529939.9	7389722.1	0	6302	+0.000	2952.775	978721.379	-138.692	126.546	-45.886	-58.032	410.065
529939.9	7389722.1	0	6302	+0.004	2952.775	978721.379	-138.692	126.546	-45.886	-58.032	410.065
529939.9	7389722.1	0	6302	+0.288	2952.771	978721.379	-138.692	126.546	-45.886	-58.032	410.065
529939.9	7389722.1	0	6302	+0.004	2952.483	978721.379	-138.692	126.546	-45.886	-58.032	410.065
529602.4	7386199.1	2960	8620	+0.174	2963.946	978732.554	-129.626	128.536	-46.608	-47.698	416.512
529598.7	7386600.9	2960	8660	+0.183	2963.091	978731.699	-130.240	128.363	-46.545	-48.422	415.954
529598.4	7386996.3	2960	8700	+0.194	2962.298	978730.906	-130.797	127.676	-46.296	-49.417	413.725
529598.6	7387393.5	2960	8740	+0.208	2960.424	978729.032	-132.433	127.434	-46.208	-51.207	412.942
529600.6	7387797.1	2960	8780	+0.219	2958.200	978726.808	-134.415	127.509	-46.235	-53.141	413.186
529597.8	7388192.1	2960	8820	+0.229	2956.459	978725.067	-135.920	127.593	-46.266	-54.593	413.458
529606.4	7388591.9	2960	8860	+0.238	2954.295	978722.903	-137.845	127.656	-46.289	-56.477	413.663
529598.4	7388996.6	2960	8900	+0.248	2953.765	978722.373	-138.133	127.165	-46.111	-57.078	412.070
529598.3	7389397.4	2960	8940	+0.259	2953.349	978721.957	-138.309	127.171	-46.113	-57.251	412.090
529600.7	7389795.3	2960	8980	+0.271	2952.980	978721.588	-138.440	126.414	-45.838	-57.864	409.636
529999.6	7386204.8	3000	8620	+0.143	2964.151	978732.759	-129.417	127.820	-46.348	-47.945	414.194
529999.4	7386598.2	3000	8660	+0.132	2963.301	978731.909	-130.031	127.720	-46.312	-48.623	413.869
530001.2	7387000.7	3000	8700	+0.121	2962.229	978730.837	-130.862	127.248	-46.141	-49.755	412.341
529998.4	7387410.6	3000	8740	+0.108	2960.045	978728.653	-132.801	126.951	-46.033	-51.883	411.378
530000.9	7387801.0	3000	8780	+0.095	2958.201	978726.809	-134.411	126.894	-46.012	-53.530	411.193
529996.6	7388195.4	3000	8820	+0.084	2956.600	978725.208	-135.776	126.926	-46.024	-54.874	411.296
529999.9	7388597.0	3000	8860	+0.073	2954.831	978723.439	-137.305	126.934	-46.027	-56.398	411.321
529997.9	7388995.7	3000	8900	+0.063	2954.146	978722.754	-137.752	126.854	-45.998	-56.895	411.063
529999.8	7389398.1	3000	8940	+0.048	2954.040	978722.648	-137.617	125.878	-45.644	-57.383	407.900

/D300

529939.9	7389722.1	0	6302	+0.000	2954.908	978721.379	-138.692	126.546	-45.886	-58.032	410.065
529939.9	7389722.1	0	6302	+0.004	2954.908	978721.379	-138.692	126.546	-45.886	-58.032	410.065
529939.9	7389722.1	0	6302	+0.924	2954.904	978721.379	-138.692	126.546	-45.886	-58.032	410.065
529939.9	7389722.1	0	6302	+0.005	2953.980	978721.379	-138.692	126.546	-45.886	-58.032	410.065
529168.9	7384320.3	2920	8420	+0.263	2962.049	978728.524	-134.781	140.047	-50.782	-45.516	453.815
529198.1	7384599.9	2920	8460	+0.249	2964.189	978730.664	-132.474	136.356	-49.443	-45.561	441.854
529196.5	7385002.4	2920	8500	+0.236	2965.912	978732.387	-130.510	132.557	-48.066	-46.018	429.544
529199.8	7385397.7	2920	8540	+0.223	2965.970	978732.445	-130.215	131.766	-47.779	-46.228	426.980
529200.0	7385796.4	2920	8580	+0.212	2966.468	978732.943	-129.478	129.829	-47.077	-46.726	420.704
529199.4	7386195.6	2920	8620	+0.199	2965.541	978732.016	-130.166	129.534	-46.970	-47.602	419.747
529198.2	7386596.4	2920	8660	+0.187	2965.343	978731.818	-130.124	128.811	-46.707	-48.021	417.404
529199.3	7387001.5	2920	8700	+0.176	2964.400	978730.875	-130.825	128.246	-46.502	-49.082	415.572
529198.4	7387394.3	2920	8740	+0.164	2962.824	978729.299	-132.166	128.113	-46.454	-50.507	415.142
529199.9	7387796.2	2920	8780	+0.154	2960.276	978726.751	-134.473	128.284	-46.516	-52.705	415.698
529199.1	7388195.9	2920	8820	+0.141	2958.314	978724.789	-136.196	128.285	-46.517	-54.428	415.699
529199.2	7388596.3	2920	8860	+0.131	2956.283	978722.758	-137.988	128.353	-46.541	-56.176	415.920
529200.0	7388995.8	2920	8900	+0.121	2955.582	978722.057	-138.449	127.820	-46.348	-56.978	414.192
529199.2	7389395.9	2920	8940	+0.108	2954.715	978721.190	-139.077	128.283	-46.516	-57.310	415.694
529199.3	7389795.1	2920	8980	+0.098	2954.460	978720.935	-139.093	127.441	-46.211	-57.863	412.966
529201.2	7390196.4	2920	9020	+0.084	2953.812	978720.287	-139.501	126.674	-45.933	-58.760	410.480
529599.3	7384597.6	2960	8460	+0.291	2963.231	978729.706	-133.433	136.898	-49.640	-46.175	443.609
529599.8	7385019.0	2960	8500	+0.311	2964.182	978730.657	-132.229	133.898	-48.552	-46.884	433.887
529599.5	7385394.9	2960	8540	+0.323	2966.208	978732.683	-129.978	130.441	-47.298	-46.836	422.685
529598.2	7385798.5	2960	8580	+0.335	2966.089	978732.564	-129.856	129.219	-46.856	-47.492	418.728
529600.9	7389795.2	2960	8980	+0.073	2955.107	978721.582	-138.446	126.420	-45.840	-57.867	409.656
529976.8	7384299.9	3000	8420	+0.415	2960.796	978727.271	-136.046	139.088	-50.434	-47.392	450.707
530000.9	7384598.4	3000	8460	+0.402	2964.488	978730.963	-132.175	133.494	-48.405	-47.087	432.578
529993.5	7384997.9	3000	8500	+0.383	2965.072	978731.547	-131.352	131.640	-47.733	-47.445	426.573
530001.1	7385396.4	3000	8540	+0.370	2966.353	978732.828	-129.832	129.285	-46.879	-47.426	418.941
530000.7	7385797.8	3000	8580	+0.346	2966.159	978732.634	-129.786	128.723	-46.675	-47.738	417.119
529999.7	7389398.3	3000	8940	+0.913	2956.182	978722.657	-137.608	125.873	-45.642	-57.377	407.885
530406.5	7384222.7	3040	8420	+0.445	2959.412	978725.887	-137.475	140.169	-50.826	-48.132	454.208
530397.4	7384593.1	3040	8460	+0.459	2963.701	978730.176	-132.965	133.730	-48.491	-47.726	433.344
530398.1	7385001.0	3040	8500	+0.472	2965.532	978732.007	-130.889	130.502	-47.321	-47.708	422.885

530402.6	7385393.2	3040	8540	+0.484	2965.974	978732.449	-130.212	128.994	-46.774	-47.992	417.999
530398.6	7385794.5	3040	8580	+0.516	2966.744	978733.219	-129.202	127.763	-46.327	-47.767	414.007
530400.3	7386195.3	3040	8620	+0.526	2966.501	978732.976	-129.205	127.012	-46.055	-48.248	411.575
530399.1	7386594.6	3040	8660	+0.538	2965.459	978731.934	-130.008	126.740	-45.956	-49.225	410.693
530398.8	7386996.5	3040	8700	+0.549	2963.822	978730.297	-131.404	126.482	-45.863	-50.785	409.858
530399.8	7387396.6	3040	8740	+0.561	2961.737	978728.212	-133.250	126.531	-45.881	-52.600	410.017
530399.9	7387794.7	3040	8780	+0.573	2960.115	978726.590	-134.634	126.334	-45.809	-54.109	409.379
530401.0	7388198.0	3040	8820	+0.584	2959.222	978725.697	-135.285	126.186	-45.756	-54.855	408.899
530400.9	7388592.8	3040	8860	+0.596	2957.983	978724.458	-136.288	126.200	-45.760	-55.849	408.942
530400.6	7388995.1	3040	8900	+0.606	2957.070	978723.545	-136.960	125.789	-45.612	-56.783	407.613
530397.8	7389387.8	3040	8940	+0.617	2956.115	978722.590	-137.681	125.877	-45.644	-57.447	407.898
530837.3	7384189.7	3080	8420	+0.803	2960.520	978726.995	-136.387	138.281	-50.141	-48.247	448.090
530799.8	7384600.1	3080	8460	+0.788	2964.346	978730.821	-132.315	132.202	-47.937	-48.050	428.392
530799.4	7384992.6	3080	8500	+0.777	2965.357	978731.832	-131.069	130.210	-47.215	-48.074	421.937
530799.7	7385395.7	3080	8540	+0.766	2966.478	978732.953	-129.706	128.621	-46.639	-47.724	416.790
530795.2	7385801.1	3080	8580	+0.753	2966.493	978732.968	-129.449	127.404	-46.197	-48.242	412.844
530795.7	7386195.5	3080	8620	+0.742	2965.979	978732.454	-129.726	126.457	-45.854	-49.123	409.778
530798.7	7386595.3	3080	8660	+0.730	2964.827	978731.302	-130.639	126.101	-45.725	-50.263	408.624
530794.4	7386992.1	3080	8700	+0.718	2962.666	978729.141	-132.563	125.883	-45.646	-52.325	407.916
530798.4	7387393.0	3080	8740	+0.703	2961.510	978727.985	-133.479	125.927	-45.662	-53.213	408.060
530799.4	7387790.7	3080	8780	+0.690	2960.123	978726.598	-134.628	125.792	-45.613	-54.449	407.621
530800.1	7388195.2	3080	8820	+0.679	2959.543	978726.018	-134.966	125.579	-45.535	-54.922	406.930
530796.9	7388584.5	3080	8860	+0.667	2958.225	978724.700	-136.051	125.281	-45.427	-56.197	405.966
530802.0	7388995.0	3080	8900	+0.655	2957.573	978724.048	-136.457	125.042	-45.341	-56.756	405.192
531200.2	7384200.0	3120	8420	+0.841	2962.804	978729.279	-134.096	134.139	-48.639	-48.596	434.669
531196.1	7384597.4	3120	8460	+0.856	2963.727	978730.202	-132.935	132.826	-48.163	-48.272	430.416
531198.5	7384994.9	3120	8500	+0.870	2965.489	978731.964	-130.935	129.762	-47.052	-48.225	420.486

/D301

529939.9	7389722.1	0	6302	+0.000	2956.361	978721.379	-138.692	126.546	-45.886	-58.032	410.065
529939.9	7389722.1	0	6302	+0.007	2956.361	978721.379	-138.692	126.546	-45.886	-58.032	410.065
529939.9	7389722.1	0	6302	+0.968	2956.354	978721.379	-138.692	126.546	-45.886	-58.032	410.065
529939.9	7389722.1	0	6302	+0.003	2955.386	978721.379	-138.692	126.546	-45.886	-58.032	410.065
530397.8	7389387.8	3040	8940	+0.954	2957.561	978722.586	-137.685	125.880	-45.645	-57.449	407.906
530801.9	7388994.9	3080	8900	+0.045	2959.037	978724.062	-136.443	125.044	-45.342	-56.740	405.199
531200.6	7385398.1	3120	8540	+0.152	2967.922	978732.947	-129.710	127.538	-46.246	-48.419	413.278
531199.1	7385792.5	3120	8580	+0.139	2967.401	978732.426	-129.995	126.666	-45.930	-49.259	410.455
531196.0	7386202.7	3120	8620	+0.128	2966.521	978731.546	-130.630	125.974	-45.679	-50.334	408.212
531199.7	7386597.7	3120	8660	+0.117	2965.591	978730.616	-131.323	125.546	-45.523	-51.301	406.823
531207.1	7387023.9	3120	8700	+0.106	2963.863	978728.888	-132.796	125.363	-45.457	-52.890	406.232
531200.5	7387397.6	3120	8740	+0.095	2962.126	978727.151	-134.309	125.566	-45.531	-54.274	406.888
531198.7	7387797.1	3120	8780	+0.084	2961.338	978726.363	-134.858	125.351	-45.453	-54.960	406.191
531198.2	7388202.7	3120	8820	+0.073	2960.594	978725.619	-135.360	125.195	-45.396	-55.561	405.688
531200.8	7388595.5	3120	8860	+0.058	2959.820	978724.845	-135.899	124.861	-45.275	-56.313	404.605
531609.9	7383949.1	3160	8380	+0.178	2959.593	978724.618	-138.907	140.141	-50.816	-49.582	454.118
531601.4	7384193.6	3160	8420	+0.199	2965.210	978730.235	-133.143	132.480	-48.038	-48.701	429.292
531601.2	7384596.1	3160	8460	+0.210	2967.336	978732.361	-130.776	129.627	-47.003	-48.153	420.049
531601.9	7384994.3	3160	8500	+0.221	2967.767	978732.792	-130.107	128.478	-46.587	-48.215	416.326
531600.4	7385395.5	3160	8540	+0.230	2967.141	978732.166	-130.492	128.189	-46.482	-48.786	415.388
531602.1	7385794.3	3160	8580	+0.240	2967.378	978732.403	-130.017	126.019	-45.695	-49.692	408.358
531600.3	7386193.9	3160	8620	+0.251	2966.857	978731.882	-130.298	125.248	-45.416	-50.466	405.860
531601.2	7386595.6	3160	8660	+0.263	2964.912	978729.937	-132.003	124.935	-45.302	-52.370	404.845
531603.1	7386997.4	3160	8700	+0.273	2963.618	978728.643	-133.056	124.989	-45.322	-53.389	405.020
531600.1	7387397.3	3160	8740	+0.285	2962.138	978727.163	-134.297	124.820	-45.260	-54.737	404.471
531599.9	7387794.5	3160	8780	+0.296	2961.262	978726.287	-134.935	125.086	-45.357	-55.206	405.335
531598.8	7388196.0	3160	8820	+0.307	2960.511	978725.536	-135.446	124.745	-45.233	-55.934	404.229
531600.3	7388595.3	3160	8860	+0.318	2959.862	978724.887	-135.856	124.323	-45.080	-56.613	402.861
531988.8	7383930.0	3200	8380	+0.474	2958.251	978723.276	-140.260	142.683	-51.738	-49.314	462.357
531999.8	7384199.3	3200	8420	+0.460	2965.513	978730.538	-132.836	133.223	-48.307	-47.921	431.701
531999.1	7384599.3	3200	8460	+0.448	2968.325	978733.350	-129.785	129.354	-46.904	-47.335	419.164
531999.5	7384998.4	3200	8500	+0.437	2968.450	978733.475	-129.421	127.231	-46.135	-48.324	412.285
531998.6	7385400.7	3200	8540	+0.425	2967.512	978732.537	-130.118	126.354	-45.817	-49.580	409.443
531997.9	7385797.5	3200	8580	+0.414	2966.925	978731.950	-130.467	125.779	-45.608	-50.297	407.578
532000.3	7386197.2	3200	8620	+0.403	2966.734	978731.759	-130.419	124.632	-45.192	-50.979	403.861
531999.3	7386596.0	3200	8660	+0.393	2964.695	978729.720	-132.219	124.345	-45.088	-52.962	402.932
531999.6	7386997.5	3200	8700	+0.380	2963.184	978728.209	-133.490	124.304	-45.073	-54.259	402.801
532001.4	7387397.7	3200	8740	+0.358	2962.271	978727.296	-134.163	124.414	-45.113	-54.862	403.156
532002.1	7387796.7	3200	8780	+0.348	2961.489	978726.514	-134.706	124.507	-45.147	-55.347	403.456
532004.7	7388196.0	3200	8820	+0.338	2960.490	978725.515	-135.467	124.334	-45.084	-56.217	402.897

532399.4	7383947.0	3240	8380	+0.500	2961.317	978726.342	-137.183	137.964	-50.026	-49.246	447.063
532393.2	7384196.0	3240	8420	+0.511	2965.436	978730.461	-132.915	132.285	-47.967	-48.597	428.663
532400.3	7384595.6	3240	8460	+0.526	2966.753	978731.778	-131.358	129.324	-46.894	-48.928	419.068
532399.5	7384996.7	3240	8500	+0.536	2966.630	978731.655	-131.241	128.043	-46.429	-49.627	414.917
532399.0	7385395.0	3240	8540	+0.547	2966.582	978731.607	-131.051	126.678	-45.934	-50.306	410.494
532400.9	7385795.8	3240	8580	+0.556	2966.337	978731.362	-131.056	125.692	-45.577	-50.940	407.299
532397.7	7386193.8	3240	8620	+0.565	2965.586	978730.611	-131.568	124.778	-45.245	-52.035	404.337
532401.2	7386596.2	3240	8660	+0.575	2964.458	978729.483	-132.455	124.273	-45.062	-53.244	402.700
532399.2	7386996.7	3240	8700	+0.585	2962.846	978727.871	-133.828	123.970	-44.952	-54.810	401.717
532400.5	7387395.5	3240	8740	+0.594	2962.028	978727.053	-134.407	124.020	-44.970	-55.357	401.878
532399.8	7387794.8	3240	8780	+0.606	2961.583	978726.608	-134.613	123.920	-44.934	-55.627	401.555
532813.4	7383963.7	3280	8380	+0.787	2959.665	978724.690	-138.824	139.800	-50.692	-49.717	453.013
532796.4	7384202.1	3280	8420	+0.770	2964.194	978729.219	-134.153	132.962	-48.212	-49.404	430.854
532799.1	7384600.4	3280	8460	+0.757	2965.234	978730.259	-132.874	130.739	-47.407	-49.541	423.653
532798.8	7384999.5	3280	8500	+0.746	2965.706	978730.731	-132.163	128.622	-46.639	-50.180	416.793
532801.2	7385400.0	3280	8540	+0.732	2963.533	978728.558	-134.096	130.538	-47.334	-50.892	423.001
532796.7	7385792.8	3280	8580	+0.721	2965.395	978730.420	-131.999	126.467	-45.858	-51.389	409.810
532798.6	7386203.2	3280	8620	+0.711	2964.235	978729.260	-132.913	125.236	-45.411	-53.089	405.819
532800.4	7386595.0	3280	8660	+0.700	2964.602	978729.627	-132.312	123.793	-44.888	-53.407	401.144
532801.5	7386997.1	3280	8700	+0.687	2963.240	978728.265	-133.433	123.449	-44.763	-54.747	400.028
532803.1	7387402.1	3280	8740	+0.676	2962.223	978727.248	-134.208	123.583	-44.812	-55.436	400.463
532802.4	7387794.6	3280	8780	+0.666	2961.730	978726.755	-134.466	123.232	-44.684	-55.918	399.326
533174.1	7384155.8	3320	8420	+0.816	2958.453	978723.478	-139.921	140.525	-50.955	-50.351	455.363
533200.6	7384594.0	3320	8460	+0.866	2963.421	978728.446	-134.690	132.680	-48.110	-50.121	429.942
533199.3	7384993.2	3320	8500	+0.876	2961.682	978726.707	-136.190	134.134	-48.638	-50.694	434.654
533189.3	7385505.9	3320	8540	+0.903	2960.986	978726.011	-136.579	132.918	-48.197	-51.858	430.714
533199.5	7385797.0	3320	8580	+0.914	2963.095	978728.120	-134.296	128.438	-46.572	-52.430	416.195

/D302

529939.9	7389722.1	0	6302	+0.000	2957.801	978721.379	-138.692	126.546	-45.886	-58.032	410.065
529939.9	7389722.1	0	6302	+0.004	2957.801	978721.379	-138.692	126.546	-45.886	-58.032	410.065
529939.9	7389722.1	0	6302	+0.981	2957.797	978721.379	-138.692	126.546	-45.886	-58.032	410.065
529939.9	7389722.1	0	6302	+0.008	2956.816	978721.379	-138.692	126.546	-45.886	-58.032	410.065
532802.3	7387794.5	3280	8780	+0.955	2963.155	978726.737	-134.484	123.233	-44.685	-55.936	399.329
533199.8	7385797.2	3320	8580	+0.075	2964.564	978728.146	-134.270	128.427	-46.568	-52.411	416.159
533196.3	7386194.4	3320	8620	+0.084	2965.938	978729.520	-132.658	124.976	-45.317	-52.999	404.976
533200.3	7386597.7	3320	8660	+0.098	2966.359	978729.941	-131.995	123.442	-44.761	-53.314	400.006
533203.7	7386995.0	3320	8700	+0.111	2964.934	978728.516	-133.183	122.950	-44.582	-54.815	398.411
533199.3	7387397.7	3320	8740	+0.123	2963.926	978727.508	-133.950	123.045	-44.617	-55.521	398.720
533601.1	7384593.4	3360	8460	+0.243	2961.697	978725.279	-137.857	136.839	-49.618	-50.637	443.418
533532.4	7384945.6	3360	8500	+0.227	2960.727	978724.309	-138.616	137.445	-49.838	-51.009	445.382
533609.2	7385416.0	3360	8540	+0.193	2963.145	978726.727	-135.916	131.380	-47.639	-52.175	425.730
533584.1	7385816.5	3360	8580	+0.178	2961.932	978725.514	-136.890	131.233	-47.586	-53.242	425.253
533600.5	7386199.3	3360	8620	+0.162	2966.037	978726.619	-132.556	124.521	-45.152	-53.186	403.504
533605.6	7386594.9	3360	8660	+0.152	2966.703	978730.285	-131.653	122.955	-44.584	-53.281	398.430
533596.6	7386994.8	3360	8700	+0.138	2965.290	978728.872	-132.826	122.612	-44.460	-54.674	397.317
534059.3	7385126.7	3400	8500	+0.300	2962.586	978726.168	-136.648	132.554	-48.065	-52.159	429.534
534002.7	7385397.3	3400	8540	+0.313	2964.987	978728.569	-134.085	127.970	-46.402	-52.518	414.678
534000.3	7385807.4	3400	8580	+0.327	2963.541	978727.123	-135.286	128.472	-46.585	-53.398	416.306
534002.1	7386198.3	3400	8620	+0.340	2963.705	978727.287	-134.888	127.149	-46.105	-53.843	412.020
534000.3	7386597.2	3400	8660	+0.352	2966.513	978730.095	-131.841	122.450	-44.401	-53.792	396.791
533999.9	7386994.8	3400	8700	+0.366	2965.225	978728.807	-132.891	122.123	-44.282	-55.050	395.731
534398.3	7385001.1	3440	8500	+0.435	2963.865	978727.447	-135.444	131.180	-47.567	-51.830	425.082
534400.7	7385425.3	3440	8540	+0.420	2964.621	978728.203	-134.434	128.049	-46.431	-52.816	414.934
534400.5	7385795.7	3440	8580	+0.407	2965.543	978729.125	-133.290	125.136	-45.375	-53.529	405.496
534401.5	7386201.7	3440	8620	+0.392	2965.663	978729.245	-132.927	123.836	-44.903	-53.995	401.282
534400.2	7386599.4	3440	8660	+0.382	2965.624	978729.206	-132.728	122.550	-44.437	-54.615	397.117
534812.6	7384666.6	3480	8460	+0.460	2961.975	978725.557	-137.534	134.263	-48.684	-51.955	435.070
534798.9	7385002.8	3480	8500	+0.475	2963.880	978727.462	-135.427	130.485	-47.314	-52.257	422.828
534804.3	7385400.8	3480	8540	+0.490	2965.542	978729.124	-133.527	126.694	-45.940	-52.773	410.545
534794.4	7385801.0	3480	8580	+0.529	2965.717	978729.299	-133.112	124.745	-45.233	-53.600	404.229
534801.0	7386199.0	3480	8620	+0.541	2965.917	978729.499	-132.674	123.105	-44.638	-54.208	398.913
535190.3	7384629.1	3520	8460	+0.602	2964.587	978728.169	-134.944	130.854	-47.448	-51.538	424.024
535202.6	7385003.0	3520	8500	+0.587	2964.005	978727.587	-135.302	129.324	-46.893	-52.871	419.067
535201.0	7385401.3	3520	8540	+0.576	2965.114	978728.696	-133.954	126.635	-45.918	-53.237	410.354
535198.2	7385803.4	3520	8580	+0.565	2965.463	978729.045	-133.364	124.519	-45.151	-53.997	403.495
535199.4	7386199.7	3520	8620	+0.555	2965.531	978729.113	-133.059	122.978	-44.592	-54.674	398.502
535599.0	7384599.8	3560	8460	+0.620	2965.495	978729.077	-134.053	128.811	-46.707	-51.949	417.405
535601.9	7384999.3	3560	8500	+0.635	2965.725	978729.307	-133.583	126.609	-45.909	-52.883	410.269

535597.9	7385401.5	3560	8540	+0.648	2966.583	978730.165	-132.484	124.155	-45.019	-53.349	402.317
535603.7	7385800.8	3560	8580	+0.662	2967.083	978730.665	-131.745	122.108	-44.277	-53.914	395.683
536002.3	7384596.6	3600	8460	+0.703	2967.365	978730.947	-132.184	125.667	-45.568	-52.084	407.218
535996.8	7385001.3	3600	8500	+0.690	2967.230	978730.812	-132.076	124.385	-45.103	-52.794	403.063
535997.4	7385399.0	3600	8540	+0.678	2967.058	978730.640	-132.010	123.197	-44.672	-53.485	399.211
536395.8	7384401.8	3640	8440	+0.722	2969.350	978732.932	-130.315	123.316	-44.715	-51.714	399.597
536399.3	7384598.1	3640	8460	+0.733	2969.101	978732.683	-130.446	123.201	-44.673	-51.919	399.224
536394.4	7384998.0	3640	8500	+0.748	2968.774	978732.356	-130.534	122.349	-44.364	-52.549	396.465
536400.2	7385400.7	3640	8540	+0.759	2968.013	978731.595	-131.054	121.661	-44.115	-53.508	394.235
536797.8	7384399.2	3680	8440	+0.842	2970.622	978734.204	-129.044	121.051	-43.894	-51.887	392.259
536800.6	7384597.5	3680	8460	+0.827	2970.063	978733.645	-129.484	121.601	-44.093	-51.976	394.041
536800.0	7384998.1	3680	8500	+0.773	2970.005	978733.587	-129.302	120.567	-43.718	-52.453	390.690
537200.2	7384396.7	3720	8440	+0.855	2971.639	978735.221	-128.028	119.715	-43.409	-51.722	387.929
537202.2	7384600.9	3720	8460	+0.862	2971.535	978735.117	-128.009	119.483	-43.325	-51.851	387.179
537192.1	7384982.8	3720	8500	+0.877	2971.115	978734.697	-128.201	119.144	-43.202	-52.259	386.078
537599.5	7384591.1	3760	8460	+0.919	2972.636	978736.218	-126.914	118.642	-43.020	-51.292	384.451
537595.1	7385007.6	3760	8500	+0.892	2971.808	978735.390	-127.492	118.247	-42.877	-52.122	383.174
/D303											
529939.9	7389722.1	0	6302	+0.000	2959.270	978721.379	-138.692	126.546	-45.886	-58.032	410.065
529939.9	7389722.1	0	6302	+0.005	2959.270	978721.379	-138.692	126.546	-45.886	-58.032	410.065
529939.9	7389722.1	0	6302	+0.904	2959.265	978721.379	-138.692	126.546	-45.886	-58.032	410.065
529939.9	7389722.1	0	6302	+0.006	2958.361	978721.379	-138.692	126.546	-45.886	-58.032	410.065
527605.9	7384208.6	2760	8420	+0.710	2965.855	978727.969	-135.405	143.398	-51.997	-44.004	464.674
527596.9	7384598.0	2760	8460	+0.732	2968.714	978730.828	-132.313	138.672	-50.283	-43.924	449.357
527599.4	7384997.4	2760	8500	+0.744	2970.041	978732.155	-130.747	134.802	-48.880	-44.825	436.818
527600.2	7385400.7	2760	8540	+0.754	2969.166	978731.280	-131.380	134.021	-48.597	-45.956	434.288
527600.0	7385801.9	2760	8580	+0.765	2968.083	978730.197	-132.223	134.580	-48.799	-46.442	436.100
527600.9	7386197.3	2760	8620	+0.774	2968.540	978730.654	-131.529	132.553	-48.064	-47.041	429.529
527599.5	7386597.9	2760	8660	+0.789	2968.527	978730.641	-131.302	131.395	-47.644	-47.552	425.778
527600.1	7386996.0	2760	8700	+0.800	2967.816	978729.930	-131.775	130.964	-47.488	-48.299	424.380
527599.2	7387401.2	2760	8740	+0.810	2966.605	978728.719	-132.744	131.176	-47.565	-49.133	425.067
527602.0	7387794.2	2760	8780	+0.819	2965.610	978727.724	-133.503	130.931	-47.476	-50.048	424.275
527599.1	7388195.2	2760	8820	+0.831	2964.336	978726.450	-134.537	130.870	-47.454	-51.122	424.075
527595.9	7388599.8	2760	8860	+0.841	2961.490	978723.604	-137.141	131.216	-47.580	-53.505	425.199
527600.6	7388993.8	2760	8900	+0.853	2960.272	978722.386	-138.124	129.505	-46.959	-55.578	419.652
527599.8	7389400.2	2760	8940	+0.865	2958.995	978721.109	-139.157	129.704	-47.031	-56.485	420.297
527983.8	7384301.7	2800	8420	+0.673	2964.644	978726.758	-136.560	145.255	-52.670	-43.975	470.689
527999.4	7384598.9	2800	8460	+0.655	2969.443	978731.557	-131.583	136.563	-49.518	-44.538	442.524
528001.0	7385002.3	2800	8500	+0.641	2970.178	978732.292	-130.606	134.140	-48.640	-45.106	434.673
528003.4	7385409.3	2800	8540	+0.630	2970.037	978732.151	-130.504	132.610	-48.085	-45.979	429.715
527996.6	7385805.1	2800	8580	+0.619	2970.138	978732.252	-130.166	132.090	-47.896	-45.972	428.029
528000.1	7386200.0	2800	8620	+0.609	2969.290	978731.404	-130.777	131.542	-47.698	-46.933	426.253
528000.9	7386598.1	2800	8660	+0.600	2969.191	978731.305	-130.638	130.370	-47.273	-47.541	422.456
527998.9	7386996.2	2800	8700	+0.584	2967.941	978730.055	-131.650	130.370	-47.273	-48.552	422.457
528001.3	7387399.9	2800	8740	+0.575	2967.023	978729.137	-132.326	129.992	-47.136	-49.469	421.232
528001.6	7387793.4	2800	8780	+0.565	2965.881	978727.995	-133.232	129.932	-47.114	-50.414	421.037
527999.5	7388198.2	2800	8820	+0.556	2963.158	978725.272	-135.713	130.281	-47.240	-52.673	422.168
528001.1	7388597.0	2800	8860	+0.546	2960.490	978722.604	-138.143	131.391	-47.643	-54.394	425.766
527999.3	7389000.1	2800	8900	+0.537	2960.199	978722.313	-138.192	129.776	-47.057	-55.474	420.530
527999.8	7389399.8	2800	8940	+0.525	2958.286	978720.400	-139.866	130.866	-47.452	-56.453	424.062
528000.7	7389797.9	2800	8980	+0.516	2957.683	978719.797	-140.231	129.800	-47.066	-57.497	420.608
528001.6	7390199.1	2800	9020	+0.507	2957.773	978719.887	-139.901	127.928	-46.387	-58.360	414.544
527999.3	7390598.9	2800	9060	+0.495	2957.291	978719.405	-140.144	126.679	-45.934	-59.399	410.496
527997.7	7390999.4	2800	9100	+0.474	2956.802	978718.916	-140.394	126.590	-45.902	-59.706	410.206
528439.9	7384168.0	2840	8420	+0.269	2965.954	978728.068	-135.330	142.518	-51.678	-44.489	461.820
528420.3	7384587.8	2840	8460	+0.295	2968.322	978730.436	-132.710	138.215	-50.117	-44.613	447.877
528399.6	7385001.0	2840	8500	+0.308	2969.833	978731.947	-130.952	134.257	-48.682	-45.377	435.053
528400.5	7385398.6	2840	8540	+0.316	2970.193	978732.307	-130.354	132.246	-47.953	-46.060	428.536
528398.9	7385796.0	2840	8580	+0.329	2970.298	978732.412	-130.011	131.506	-47.685	-46.189	426.137
528400.3	7386197.1	2840	8620	+0.337	2969.702	978731.816	-130.366	130.770	-47.418	-47.014	423.754
528398.9	7386600.5	2840	8660	+0.345	2969.364	978731.478	-130.463	129.769	-47.055	-47.749	420.509
528409.3	7386993.3	2840	8700	+0.355	2968.765	978730.879	-130.827	129.001	-46.776	-48.602	418.019
528399.4	7387395.1	2840	8740	+0.364	2967.232	978729.346	-132.119	129.461	-46.943	-49.601	419.512
528398.8	7387795.0	2840	8780	+0.374	2964.969	978727.083	-134.143	129.713	-47.034	-51.465	420.327
528401.4	7388197.7	2840	8820	+0.384	2962.671	978724.785	-136.200	129.708	-47.033	-53.524	420.312
528400.1	7388596.2	2840	8860	+0.392	2961.136	978723.250	-137.497	129.700	-47.030	-54.826	420.286
528401.3	7388996.3	2840	8900	+0.400	2959.520	978721.634	-138.873	130.379	-47.276	-55.770	422.487
528403.4	7389390.2	2840	8940	+0.410	2960.016	978722.130	-138.142	127.860	-46.363	-56.644	414.324

528400.0	7389792.5	2840	8980	+0.420	2957.452	978719.566	-140.465	129.918	-47.109	-57.656	420.990
528401.0	7390194.8	2840	9020	+0.429	2957.071	978719.185	-140.605	129.098	-46.811	-58.319	418.333
528399.7	7390594.1	2840	9060	+0.438	2957.227	978719.341	-140.210	126.877	-46.006	-59.339	411.139
528789.3	7384234.4	2880	8420	+0.239	2965.117	978727.231	-136.126	143.342	-51.977	-44.761	464.492
528800.9	7384604.0	2880	8460	+0.225	2969.449	978731.563	-131.573	135.830	-49.253	-44.995	440.149
528800.5	7384999.1	2880	8500	+0.213	2969.449	978731.563	-131.336	134.506	-48.772	-45.603	435.858
528800.3	7385397.0	2880	8540	+0.204	2970.742	978732.856	-129.805	131.489	-47.678	-45.995	426.082
528800.9	7385797.4	2880	8580	+0.195	2970.435	978732.549	-129.872	130.862	-47.451	-46.462	424.050
528800.5	7386198.8	2880	8620	+0.185	2969.834	978731.948	-130.233	130.092	-47.172	-47.313	421.557
528798.7	7386598.2	2880	8660	+0.176	2969.339	978731.453	-130.489	129.602	-46.994	-47.881	419.966
528801.8	7386999.2	2880	8700	+0.167	2968.791	978730.905	-130.797	128.736	-46.680	-48.741	417.162
528798.7	7387399.0	2880	8740	+0.157	2967.419	978729.533	-131.929	128.718	-46.674	-49.885	417.104
528798.9	7387798.1	2880	8780	+0.148	2964.726	978726.840	-134.384	129.181	-46.841	-52.044	418.602
528801.7	7388197.8	2880	8820	+0.139	2962.734	978724.848	-136.136	129.029	-46.786	-53.894	418.111
528798.7	7388594.3	2880	8860	+0.130	2961.278	978723.392	-137.355	128.720	-46.674	-55.310	417.109
528799.7	7388996.0	2880	8900	+0.121	2959.729	978721.843	-138.664	129.211	-46.853	-56.305	418.701
528799.4	7389395.9	2880	8940	+0.110	2959.403	978721.517	-138.751	128.329	-46.533	-56.954	415.844
528798.9	7389793.9	2880	8980	+0.101	2958.990	978721.104	-138.926	127.558	-46.253	-57.621	413.344
528800.4	7390199.1	2880	9020	+0.082	2957.429	978719.543	-140.244	127.976	-46.405	-58.673	414.698
529199.2	7389795.2	2920	8980	+0.889	2958.812	978720.926	-139.102	127.442	-46.211	-57.871	412.968
529201.1	7390196.4	2920	9020	+0.058	2958.198	978720.312	-139.476	126.677	-45.933	-58.733	410.488
/D304											
529939.9	7389722.1	0	6302	+0.000	2960.772	978721.379	-138.692	126.546	-45.886	-58.032	410.065
529939.9	7389722.1	0	6302	+0.005	2960.772	978721.379	-138.692	126.546	-45.886	-58.032	410.065
529939.9	7389722.1	0	6302	+0.852	2960.767	978721.379	-138.692	126.546	-45.886	-58.032	410.065
529939.9	7389722.1	0	6302	+0.006	2959.915	978721.379	-138.692	126.546	-45.886	-58.032	410.065
524796.9	7385796.6	2480	8580	+0.655	2963.532	978724.144	-138.282	142.540	-51.686	-47.427	461.894
524795.9	7386609.2	2480	8660	+0.681	2960.361	978720.973	-140.967	142.793	-51.777	-49.951	462.713
525231.7	7385055.9	2520	8500	+0.598	2957.446	978718.058	-144.811	153.976	-55.832	-46.668	498.950
525203.2	7385397.1	2520	8540	+0.611	2961.770	978722.382	-140.283	147.237	-53.389	-46.434	477.114
525205.7	7385793.1	2520	8580	+0.623	2960.617	978721.229	-141.199	146.635	-53.170	-47.735	475.161
525204.6	7387014.2	2520	8700	+0.703	2959.594	978720.206	-141.491	143.810	-52.146	-49.827	466.008
525548.7	7385031.1	2560	8500	+0.572	2960.873	978721.485	-141.399	149.667	-54.270	-46.001	484.988
525602.2	7385393.3	2560	8540	+0.553	2963.209	978723.821	-138.846	144.671	-52.458	-46.633	468.797
525638.9	7385688.2	2560	8580	+0.537	2960.314	978720.926	-141.564	148.537	-53.860	-46.887	481.326
525996.3	7385003.4	2600	8500	+0.494	2964.484	978725.096	-137.804	144.146	-52.268	-45.926	467.098
526011.7	7385398.7	2600	8540	+0.509	2965.412	978726.024	-136.639	142.480	-51.664	-45.823	461.698
525990.1	7385600.7	2600	8580	+0.521	2962.979	978723.591	-138.951	145.593	-52.793	-46.151	471.785
526012.1	7387046.8	2600	8700	+0.738	2960.456	978721.068	-140.608	143.550	-52.052	-49.110	465.165
526437.8	7384692.6	2640	8460	+0.454	2964.575	978725.187	-137.899	145.429	-52.733	-45.203	471.255
526403.7	7385005.0	2640	8500	+0.438	2967.634	978728.246	-134.653	140.663	-51.005	-44.995	455.810
526406.1	7385397.1	2640	8540	+0.425	2966.582	978727.194	-135.470	141.505	-51.310	-45.275	458.537
526388.3	7385758.6	2640	8580	+0.411	2960.068	978720.680	-141.767	149.010	-54.032	-46.789	482.858
526385.5	7386724.9	2640	8660	+0.758	2961.732	978722.344	-139.525	142.649	-51.725	-48.601	462.246
526789.9	7384227.2	2680	8420	+0.351	2965.346	978725.958	-137.406	145.755	-52.851	-44.502	472.311
526799.1	7384599.6	2680	8460	+0.363	2969.163	978729.775	-133.366	139.904	-50.730	-44.192	453.349
526805.7	7385014.1	2680	8500	+0.378	2970.011	978730.623	-132.270	138.128	-50.086	-44.227	447.596
526803.2	7385403.2	2680	8540	+0.392	2967.403	978728.015	-134.645	140.340	-50.888	-45.192	454.763
526800.6	7386596.6	2680	8660	+0.776	2965.962	978726.574	-135.371	137.230	-49.760	-47.901	444.685
526798.8	7387002.4	2680	8700	+0.789	2967.439	978728.051	-133.651	134.069	-48.614	-48.196	434.444
526798.3	7387403.3	2680	8740	+0.798	2967.271	978727.883	-133.579	132.609	-48.085	-49.055	429.713
526797.1	7387803.8	2680	8780	+0.807	2966.650	978727.262	-133.960	131.915	-47.833	-49.879	427.462
526797.9	7388203.1	2680	8820	+0.818	2965.132	978725.744	-135.240	132.466	-48.033	-50.806	429.248
527177.8	7384220.4	2720	8420	+0.333	2966.329	978726.941	-136.427	144.790	-52.502	-44.138	469.184
527200.7	7384600.0	2720	8460	+0.321	2970.923	978731.535	-131.605	137.655	-49.914	-43.865	446.063
527196.2	7384993.5	2720	8500	+0.307	2971.487	978732.099	-130.806	135.473	-49.123	-44.456	438.993
527222.1	7385432.7	2720	8540	+0.294	2967.819	978728.431	-134.210	139.134	-50.451	-45.527	450.856
527206.7	7385815.8	2720	8580	+0.281	2968.173	978728.785	-133.627	136.859	-49.626	-46.394	443.483
527205.2	7386204.1	2720	8620	+0.263	2967.102	978727.714	-134.466	136.797	-49.603	-47.271	443.284
527202.3	7386597.0	2720	8660	+0.250	2968.258	978728.870	-133.074	133.737	-48.494	-47.831	433.367
527198.9	7386996.4	2720	8700	+0.238	2968.468	978729.080	-132.625	132.479	-48.038	-48.184	429.291
527199.3	7387398.4	2720	8740	+0.228	2967.761	978728.373	-133.092	131.859	-47.813	-49.045	427.281
527198.3	7387796.0	2720	8780	+0.219	2966.677	978727.289	-133.938	132.053	-47.883	-49.768	427.910
527199.5	7388200.4	2720	8820	+0.205	2965.764	978726.376	-134.609	131.511	-47.687	-50.784	426.154
527201.3	7388599.3	2720	8860	+0.194	2963.716	978724.328	-136.418	131.405	-47.648	-52.661	425.809
527204.3	7388998.7	2720	8900	+0.182	2962.010	978722.622	-137.885	130.882	-47.458	-54.462	424.114
527208.0	7389390.1	2720	8940	+0.171	2960.083	978720.695	-139.578	130.603	-47.357	-56.332	423.212
527291.1	7389795.1	2720	8980	+0.158	2957.141	978717.753	-142.278	131.463	-47.669	-58.484	425.997

527201.3	7390196.0	2720	9020	+0.146	2957.843	978718.455	-141.336	129.065	-46.800	-59.070	418.228
527199.2	7390599.1	2720	9060	+0.137	2958.170	978718.782	-140.768	127.896	-46.376	-59.248	414.439
527200.0	7390994.2	2720	9100	+0.118	2957.604	978718.216	-141.098	127.484	-46.226	-59.840	413.104
527197.5	7391397.3	2720	9140	+0.109	2957.205	978717.817	-141.256	127.322	-46.167	-60.101	412.578
527596.1	7388599.8	2760	8860	+0.835	2962.990	978723.602	-137.143	131.221	-47.581	-53.504	425.213
527599.9	7389400.3	2760	8940	+0.046	2960.532	978721.144	-139.122	129.715	-47.035	-56.442	420.335
527595.2	7389798.4	2760	8980	+0.065	2959.554	978720.166	-139.862	128.874	-46.730	-57.718	417.609
527597.7	7390202.8	2760	9020	+0.075	2959.152	978719.764	-140.022	127.971	-46.403	-58.454	414.684
527600.7	7390598.0	2760	9060	+0.085	2958.783	978719.395	-140.155	127.197	-46.122	-59.080	412.174
527599.6	7390998.2	2760	9100	+0.095	2958.077	978718.689	-140.622	126.936	-46.027	-59.714	411.327
/D305											
529939.9	7389722.1	0	6302	+0.000	2962.425	978721.379	-138.692	126.546	-45.886	-58.032	410.065
529939.9	7389722.1	0	6302	+0.005	2962.425	978721.379	-138.692	126.546	-45.886	-58.032	410.065
529939.9	7389722.1	0	6302	+0.914	2962.420	978721.379	-138.692	126.546	-45.886	-58.032	410.065
529939.9	7389722.1	0	6302	+0.006	2961.506	978721.379	-138.692	126.546	-45.886	-58.032	410.065
525200.4	7387402.3	2520	8740	+0.825	2966.469	978725.428	-136.037	135.765	-49.229	-49.501	439.937
525199.8	7387800.5	2520	8780	+0.875	2966.567	978725.526	-135.700	135.277	-49.052	-49.475	438.357
525602.9	7387420.4	2560	8740	+0.808	2966.926	978725.885	-135.568	135.179	-49.017	-49.406	438.040
525600.5	7387799.0	2560	8780	+0.738	2966.325	978725.284	-135.943	135.788	-49.237	-49.392	440.013
525602.3	7388197.8	2560	8820	+0.725	2964.183	978723.142	-137.846	137.003	-49.678	-50.521	443.951
525638.6	7388539.7	2560	8860	+0.712	2957.416	978716.375	-144.408	144.585	-52.427	-52.251	468.518
525609.0	7389091.3	2560	8900	+0.684	2956.015	978714.974	-145.479	141.683	-51.375	-55.171	459.116
525597.6	7389399.3	2560	8940	+0.669	2959.077	978718.036	-142.233	135.894	-49.276	-55.615	440.355
525600.5	7389796.1	2560	8980	+0.658	2960.114	978719.073	-140.959	131.949	-47.845	-56.855	427.572
525598.8	7390199.0	2560	9020	+0.645	2959.615	978718.574	-141.217	130.891	-47.462	-57.788	424.144
525598.0	7390601.2	2560	9060	+0.634	2958.608	978717.567	-141.983	130.515	-47.325	-58.794	422.926
525602.6	7390993.4	2560	9100	+0.624	2957.830	978716.789	-142.527	130.236	-47.224	-59.515	422.022
525599.4	7391396.8	2560	9140	+0.616	2957.074	978716.033	-143.042	129.707	-47.032	-60.367	420.309
525599.1	7391798.3	2560	9180	+0.605	2956.553	978715.512	-143.323	129.167	-46.837	-60.992	418.559
525597.4	7392196.3	2560	9220	+0.595	2956.512	978715.471	-143.126	128.542	-46.610	-61.193	416.534
525603.7	7392596.9	2560	9260	+0.585	2956.948	978715.907	-142.450	127.823	-46.349	-60.976	414.204
526000.3	7387399.2	2600	8740	+0.400	2967.717	978726.676	-134.790	134.382	-48.728	-49.135	435.457
525999.4	7387792.2	2600	8780	+0.415	2967.352	978726.311	-134.919	133.785	-48.511	-49.645	433.522
526000.8	7388196.9	2600	8820	+0.425	2965.400	978724.359	-136.629	134.984	-48.946	-50.591	437.407
526004.7	7388600.5	2600	8860	+0.440	2962.925	978721.884	-138.863	136.364	-49.446	-51.945	441.881
526006.1	7388978.5	2600	8900	+0.456	2960.336	978719.295	-141.226	137.353	-49.805	-53.677	445.084
525964.9	7389397.8	2600	8940	+0.472	2952.954	978711.913	-148.357	144.284	-52.318	-56.390	467.545
526001.0	7389794.3	2600	8980	+0.490	2958.540	978717.499	-142.534	133.798	-48.516	-57.251	433.564
525999.8	7390196.1	2600	9020	+0.501	2958.723	978717.682	-142.110	131.836	-47.804	-58.078	427.208
525999.6	7390594.5	2600	9060	+0.511	2959.188	978718.147	-141.407	129.803	-47.067	-58.671	420.620
526000.5	7390997.0	2600	9100	+0.521	2958.372	978717.331	-141.982	129.334	-46.897	-59.546	419.098
526000.0	7391400.0	2600	9140	+0.529	2957.273	978716.232	-142.840	129.112	-46.816	-60.545	418.379
525998.1	7391798.2	2600	9180	+0.538	2956.802	978715.761	-143.073	128.761	-46.689	-61.002	417.242
526001.6	7392198.0	2600	9220	+0.546	2957.021	978715.980	-142.615	128.258	-46.507	-60.864	415.612
526000.8	7392597.3	2600	9260	+0.557	2957.435	978716.394	-141.963	127.514	-46.237	-60.686	413.201
526397.0	7387015.1	2640	8700	+0.379	2967.409	978726.368	-135.327	136.227	-49.397	-48.496	441.437
526400.3	7387400.7	2640	8740	+0.368	2968.445	978727.404	-134.060	133.519	-48.414	-48.956	432.659
526399.4	7387804.0	2640	8780	+0.357	2968.079	978727.038	-134.185	132.511	-48.049	-49.723	429.393
526398.3	7388206.3	2640	8820	+0.346	2966.328	978725.287	-135.695	133.666	-48.468	-50.497	433.137
526400.2	7388599.8	2640	8860	+0.323	2964.501	978723.460	-137.287	133.737	-48.494	-52.043	433.367
526399.2	7389002.9	2640	8900	+0.311	2960.415	978719.374	-141.131	135.914	-49.283	-54.501	440.420
526264.6	7389321.1	2640	8940	+0.277	2953.065	978712.024	-148.291	144.865	-52.529	-55.955	469.426
526382.5	7389840.5	2640	8980	+0.249	2952.533	978711.492	-148.512	141.746	-51.398	-58.164	459.321
526398.5	7390202.9	2640	9020	+0.238	2958.925	978717.884	-141.904	130.670	-47.382	-58.615	423.429
526399.0	7390596.4	2640	9060	+0.228	2959.395	978718.354	-141.198	129.140	-46.827	-58.885	418.470
526400.2	7390998.0	2640	9100	+0.219	2958.381	978717.340	-141.972	128.855	-46.723	-59.841	417.547
526389.6	7391398.9	2640	9140	+0.206	2957.699	978716.658	-142.415	128.546	-46.611	-60.480	416.546
526400.0	7391796.2	2640	9180	+0.195	2957.391	978716.350	-142.485	128.242	-46.501	-60.744	415.561
526797.9	7388203.1	2680	8820	+0.070	2966.787	978725.746	-135.238	132.462	-48.031	-50.807	429.234
526802.0	7388591.9	2680	8860	+0.081	2965.654	978724.613	-136.138	132.170	-47.925	-51.894	428.288
526798.3	7388997.8	2680	8900	+0.094	2962.920	978721.879	-138.629	132.498	-48.044	-54.175	429.353
526799.9	7389397.7	2680	8940	+0.109	2958.405	978717.364	-142.905	134.845	-48.895	-56.955	436.957
526805.5	7389796.2	2680	8980	+0.123	2956.690	978715.649	-144.381	134.844	-48.895	-58.433	436.953
526800.0	7390195.5	2680	9020	+0.135	2959.313	978718.272	-141.520	129.609	-46.997	-58.908	419.990
526800.7	7390596.4	2680	9060	+0.145	2959.311	978718.270	-141.282	128.365	-46.546	-59.463	415.959
526800.3	7390994.4	2680	9100	+0.156	2958.541	978717.500	-141.814	128.161	-46.472	-60.125	415.298
526801.1	7391408.9	2680	9140	+0.166	2958.179	978717.138	-141.928	127.911	-46.381	-60.398	414.487
526806.0	7391800.9	2680	9180	+0.177	2957.874	978716.833	-141.999	127.626	-46.278	-60.650	413.566

527201.1	7388599.1	2720	8860	+0.896	2965.335	978724.294	-136.452	131.407	-47.649	-52.694	425.817
/D306											
529939.9	7389722.1	0	6302	+0.000	2963.934	978721.379	-138.692	126.546	-45.886	-58.032	410.065
529939.9	7389722.1	0	6302	+0.004	2963.934	978721.379	-138.692	126.546	-45.886	-58.032	410.065
529939.9	7389722.1	0	6302	+0.818	2963.930	978721.379	-138.692	126.546	-45.886	-58.032	410.065
529939.9	7389722.1	0	6302	-0.004	2963.112	978721.379	-138.692	126.546	-45.886	-58.032	410.065
522810.5	7386234.8	2280	8620	+0.425	2961.053	978718.502	-143.664	147.956	-53.650	-49.357	479.444
522799.7	7386601.4	2280	8660	+0.438	2963.693	978721.142	-140.804	144.046	-52.232	-48.990	466.771
522803.3	7386997.1	2280	8700	+0.451	2962.824	978720.273	-141.436	144.824	-52.514	-49.126	469.292
522800.6	7387400.3	2280	8740	+0.463	2964.324	978721.773	-139.695	141.674	-51.372	-49.393	459.087
523214.3	7386208.4	2320	8620	+0.389	2962.102	978719.551	-142.630	145.958	-52.925	-49.597	472.968
523201.8	7386591.4	2320	8660	+0.407	2964.592	978722.041	-139.911	142.132	-51.538	-49.317	460.570
523202.0	7387002.3	2320	8700	+0.479	2964.269	978721.718	-139.988	142.372	-51.625	-49.240	461.349
523198.1	7387401.0	2320	8740	+0.493	2963.865	978721.314	-140.153	142.091	-51.523	-49.585	460.439
523201.6	7387798.0	2320	8780	+0.531	2963.195	978720.644	-140.586	141.558	-51.330	-50.357	458.711
523273.0	7388167.7	2320	8820	+0.638	2961.258	978718.707	-142.301	142.466	-51.659	-51.494	461.654
523236.9	7388479.9	2320	8860	+0.654	2959.481	978716.930	-143.892	142.975	-51.843	-52.760	463.301
523638.1	7385895.6	2360	8580	+0.370	2958.725	978716.174	-146.194	152.195	-55.187	-49.185	493.180
523598.2	7386200.5	2360	8620	+0.357	2964.806	978722.255	-139.931	142.617	-51.714	-49.027	462.143
523599.3	7386600.4	2360	8660	+0.341	2965.378	978722.827	-139.119	141.359	-51.258	-49.017	458.067
523598.1	7386999.4	2360	8700	+0.326	2964.959	978722.408	-139.299	141.441	-51.287	-49.146	458.330
523599.4	7387402.7	2360	8740	+0.557	2965.605	978723.054	-138.412	139.435	-50.560	-49.536	451.832
523596.2	7387797.5	2360	8780	+0.545	2964.937	978722.386	-138.844	138.883	-50.360	-50.320	450.043
523661.8	7388155.6	2360	8820	+0.615	2962.701	978720.150	-140.865	141.163	-51.186	-50.889	457.429
523603.9	7388595.9	2360	8860	+0.671	2962.497	978719.946	-140.806	139.230	-50.485	-52.062	451.165
524002.8	7385804.8	2400	8580	+0.271	2963.672	978721.121	-141.301	145.779	-52.860	-48.382	472.387
524000.5	7386197.1	2400	8620	+0.287	2965.776	978723.225	-138.962	141.808	-51.420	-48.574	459.521
524000.9	7386601.1	2400	8660	+0.298	2966.523	978723.972	-137.973	139.808	-50.695	-48.860	453.041
524002.0	7386994.4	2400	8700	+0.311	2966.201	978723.650	-138.060	139.698	-50.655	-49.017	452.683
524000.8	7387398.4	2400	8740	+0.570	2966.091	978723.540	-137.928	138.879	-50.358	-49.407	450.028
524001.1	7387798.2	2400	8780	+0.584	2965.743	978723.192	-138.037	138.042	-50.055	-50.049	447.316
523997.9	7388198.3	2400	8820	+0.597	2962.829	978720.278	-140.711	141.205	-51.202	-50.708	457.567
524002.1	7388596.2	2400	8860	+0.686	2962.699	978720.148	-140.603	139.656	-50.640	-51.587	452.546
524452.1	7385503.7	2440	8540	+0.225	2962.015	978719.464	-143.138	149.727	-54.292	-47.702	485.182
524393.8	7385796.8	2440	8580	+0.212	2966.150	978723.599	-138.828	142.775	-51.771	-47.823	462.655
524397.1	7386196.8	2440	8620	+0.194	2965.752	978723.201	-138.986	141.863	-51.440	-48.563	459.700
524400.3	7386600.5	2440	8660	+0.181	2965.942	978723.391	-138.554	139.933	-50.740	-49.362	453.444
524401.8	7386997.4	2440	8700	+0.170	2967.014	978724.463	-137.245	138.158	-50.097	-49.183	447.694
524375.2	7387429.9	2440	8740	+0.750	2967.332	978724.781	-136.668	136.713	-49.573	-49.527	443.011
524399.0	7387798.0	2440	8780	+0.736	2966.169	978723.618	-137.610	137.124	-49.722	-50.208	444.343
524403.6	7388201.7	2440	8820	+0.724	2962.526	978719.975	-141.012	141.642	-51.360	-50.730	458.983
524409.6	7388545.0	2440	8860	+0.707	2961.421	978718.870	-141.912	142.630	-51.718	-51.000	462.184
524807.7	7385396.1	2480	8540	+0.243	2964.139	978721.588	-141.078	147.547	-53.501	-47.032	478.118
524797.8	7387001.2	2480	8700	+0.159	2965.684	978723.133	-138.572	140.380	-50.902	-49.094	454.893
524801.3	7387395.8	2480	8740	+0.148	2967.063	978724.512	-136.957	136.557	-49.516	-49.916	442.506
524802.4	7387799.1	2480	8780	+0.133	2966.732	978724.181	-137.046	136.529	-49.506	-50.023	442.415
524799.0	7388196.8	2480	8820	+0.122	2963.842	978721.291	-139.698	140.431	-50.921	-50.188	455.057
524804.9	7388594.1	2480	8860	+0.107	2963.456	978720.905	-139.847	138.965	-50.389	-51.271	450.308
525199.9	7387800.5	2520	8780	+0.063	2968.108	978725.557	-135.669	135.272	-49.050	-49.447	438.341
525200.6	7388201.3	2520	8820	+0.073	2964.536	978721.985	-139.001	139.176	-50.466	-50.291	450.993
525201.3	7388596.3	2520	8860	+0.086	2962.134	978719.583	-141.167	140.161	-50.823	-51.829	454.182