

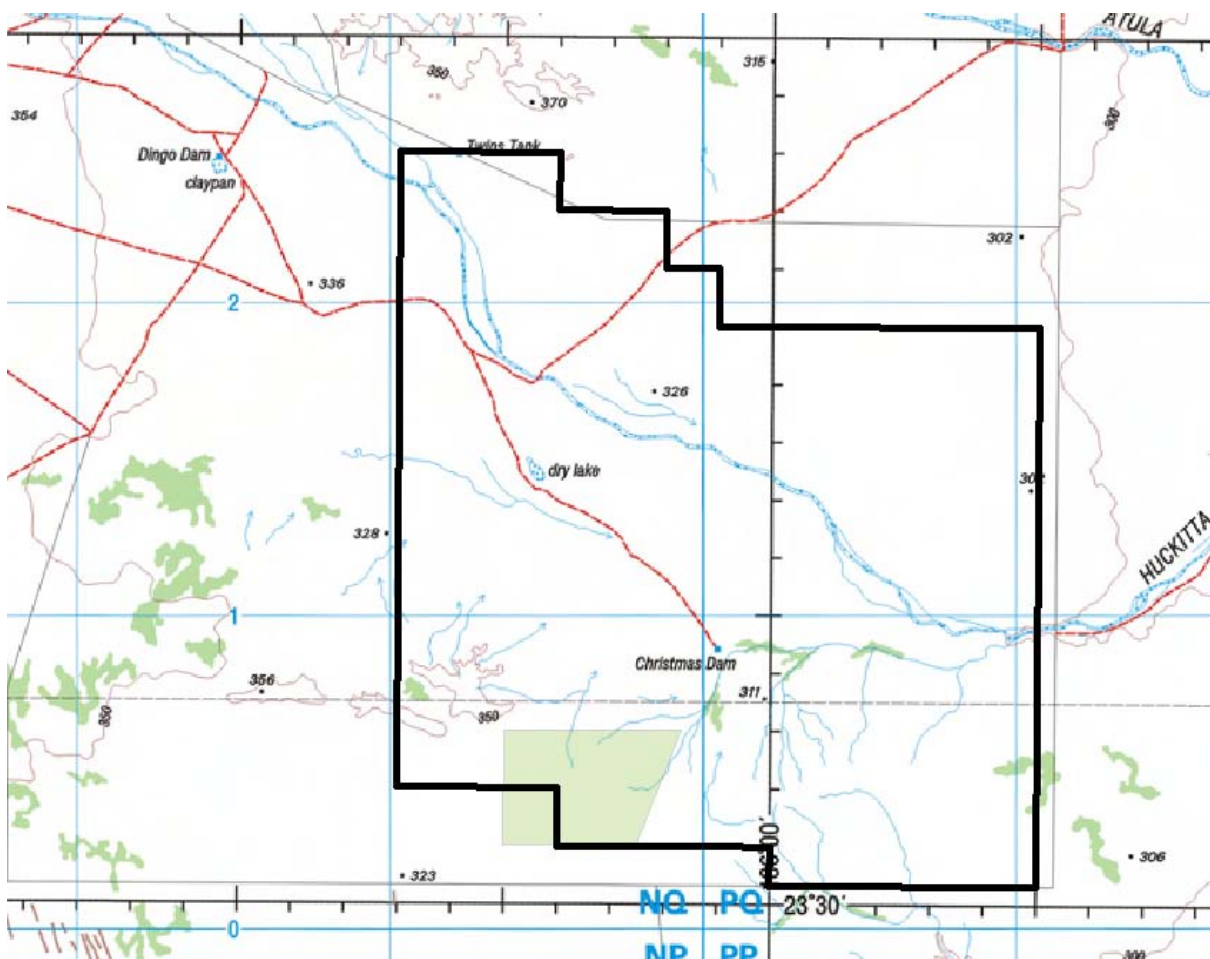
## Summary of work completed on tenements that overlap the ELA 27435

### Tenement– Damien Mizow

ELA 27435 PREVIOUS EXPLORATION	
EL	5461
EL	3015
EL	7179
EL	8861
EL	22788
EL	22877
EL	23996
EL	22878
EL	25991

Table 1: Showing previous exploration licences which overlap the ELA 27435.

#### EL5461



CR1988-0258

Report on Arltunga Hales River Region via Alice Springs.

Garside, F / Conapaira Metals

EL 4739 / EL 4959 / EL 5078 / EL 5081 / **EL 5461** / EL 5100 / EL 5079

Arunta Region

Heavitree Quartzite / White Range Quartzite / Arunta Complex

Gold exploration Lithology Literature reviews Rock chip sampling Reconnaissance

6 rock chip samples were collected from Star Creek (SR001 - SR006).

Alice Springs SF5314 / Riddoch 5851

**Report No:**

**Title:**

**Author:**

**Tenure:**

**Province:**

**Stratigraphy:**

**Thesaurus:**

**Geochem:**

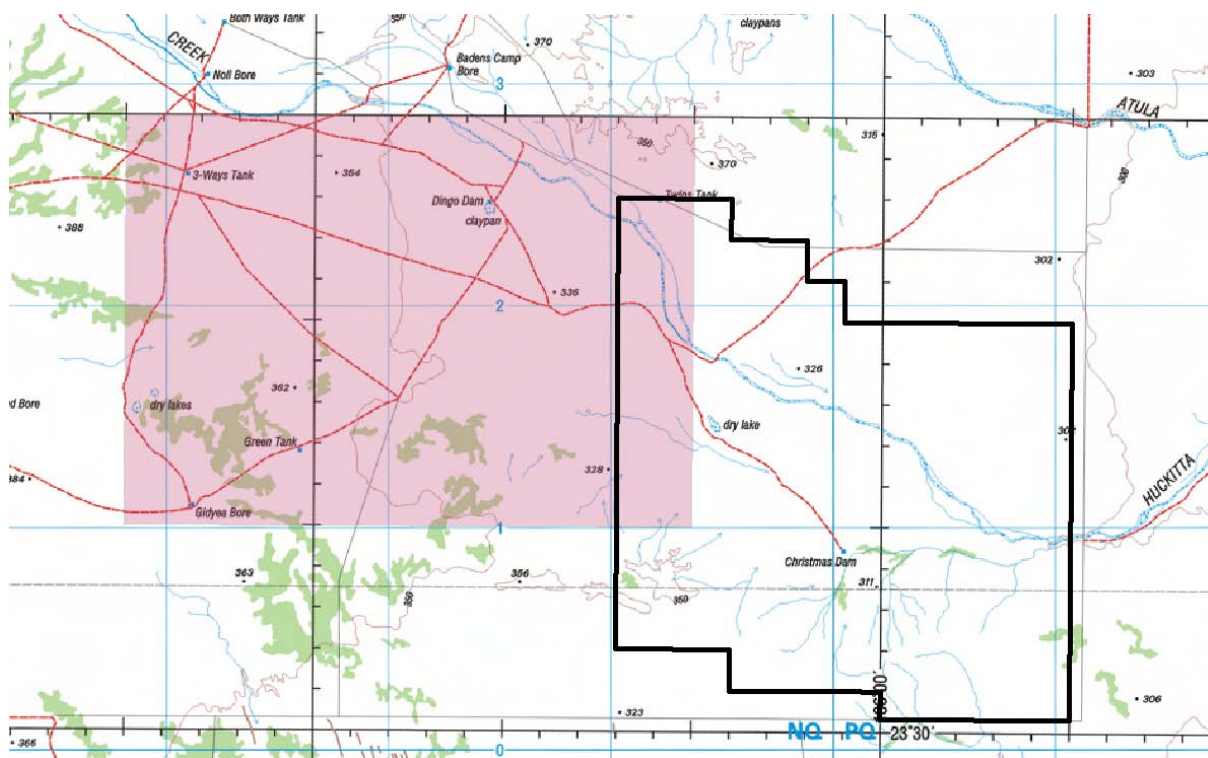
**Map Sheet:**

**Abstract:**

A four day inspection of Exploration Licence areas 4739, 4959, 5078, 5079, 5081, 5100 and 5461 held by Conapaira Metals Pty Ltd and a review of literature and earlier exploration reports has determined that: 1) gold mineralisation occurs within quartz reefs associated with major fault structures and lineaments. 2) selected areas within the above tenements are sufficiently prospective for potential economic concentrations of gold to justify a staged ongoing exploration programme. 3) in general, previous exploration was devoid of a clear strategy and poorly documented.

4) EL's 4959, 5079, 5081 and many of the sub-blocks of EL's 5078 and 5100 are not sufficiently prospective and should be relinquished.

## EL 3015



CR1984-0181

**Report No:**

Final report incorporating the Annual report for the period 4-3-83 to 1-3-84.

**Title:**

Adams, RL / Attutra Exploration Company / Peko Wallsend Operations / Petrocarb Exploration

**Author:**

**EL 3015**

**Tenure:**

Arunta Province / Arunta Region - Irindina Province

**Province:**

Regional geology Molybdenite Scheelite Tungsten Skarn

**Thesaurus:**

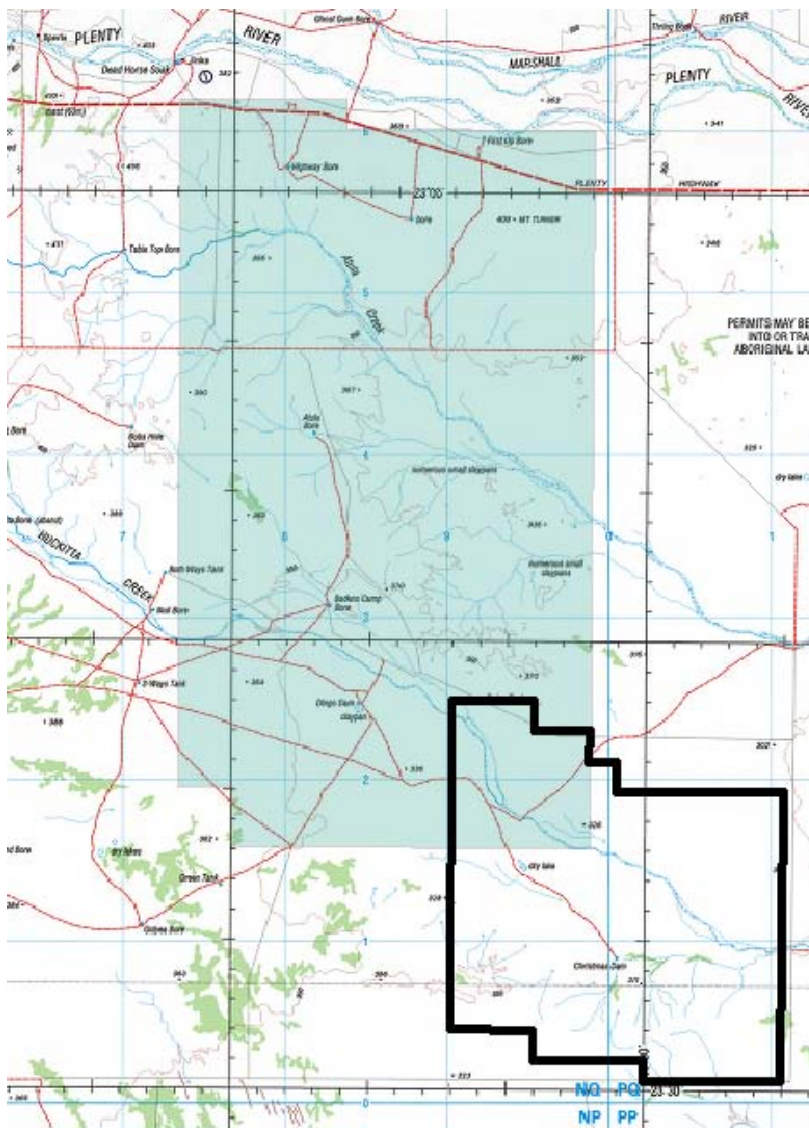
Illogwa Creek SF5315 / Brahma 6051

**Map Sheet:**

Area covered holds little prospect for magnetic skarn hosted scheelite molybdenite mineral deposits Tenure was surrendered.

**Abstract:**

**EL 7179**



CR1992-0212

**Report No:**

Annual and final report ELs 7178, 7179, 7180 and 7470 Huckitta and Illogwa Creek,  
1:250,000 Sheet area for the period 1 December 1990 to January 1992

**Title:**

Stewart, LF / BHP Minerals

**Author:**

EL 7178 / **EL 7179** / EL 7180 / EL 7470

**Tenure:**

Arunta Province / Arunta Region - Irindina Province

**Province:**

Harts Range Group / Irindina Gneiss

**Stratigraphy:**

Base metals Rock chip sampling Stream sediment sampling RC drilling Soil sampling  
Percussion drilling EM surveys Sirotem surveys

**Thesaurus:**

40 RC percussion totalling 2412m PRP 1 to 40

**Drilling:**

206 stream sediment samples 218 soil samples 31 rock chip samples

**Geochem:**

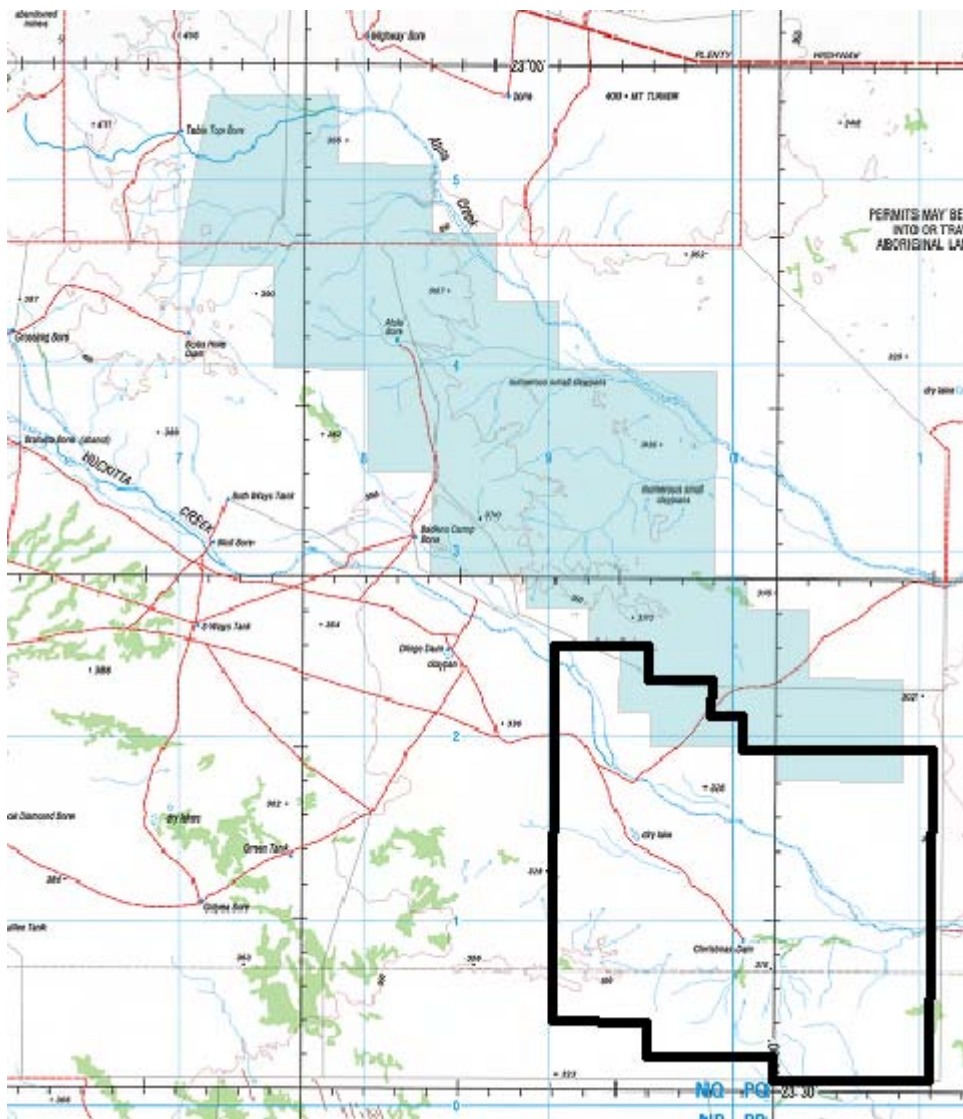
Huckitta SF5311 / Illogwa Creek SF5315 / Dneiper 5952 / Jinka 6052 / Jarvis 6150 /  
Quartz 5951 / Brahma 6051

**Map Sheet:**

Reprocessed aeromagnetic data from NTDME was interpreted and anomalies followed up  
on the ground by ground magnetic SIROTEM and VLF surveys. Rock chip, soil and  
drainage sampling surveys consisting of 206 stream sediment, 218 soil and 31 rock chip  
samples were also carried out. No geochemical anomalies were generated so a 40 hole  
RC drilling programme was carried out to test the magnetic anomalies. No significant  
base metal mineralisation was intersected so tenements were relinquished.

**Abstract:**

**EL 8861**



CR1996-0178

First and final report on exploration activities on EL 8861 Basil for the period 18-11-1994 to 04-12-1995

Price, LA / Poseidon Gold

**EL 8861**

Arunta Province / Arunta Region - Irindina Province

Harts Range Group

Gold exploration Base metals Platinum group elements Gold Rotary drilling Geochemistry RAB drilling

29 RAB holes (895m)

Illogwa Creek SF5315 / Brahma 6051 / Plenty Downs 6151

**Report No:**

**Title:**

**Author:**

**Tenure:**

**Province:**

**Stratigraphy:**

**Thesaurus:**

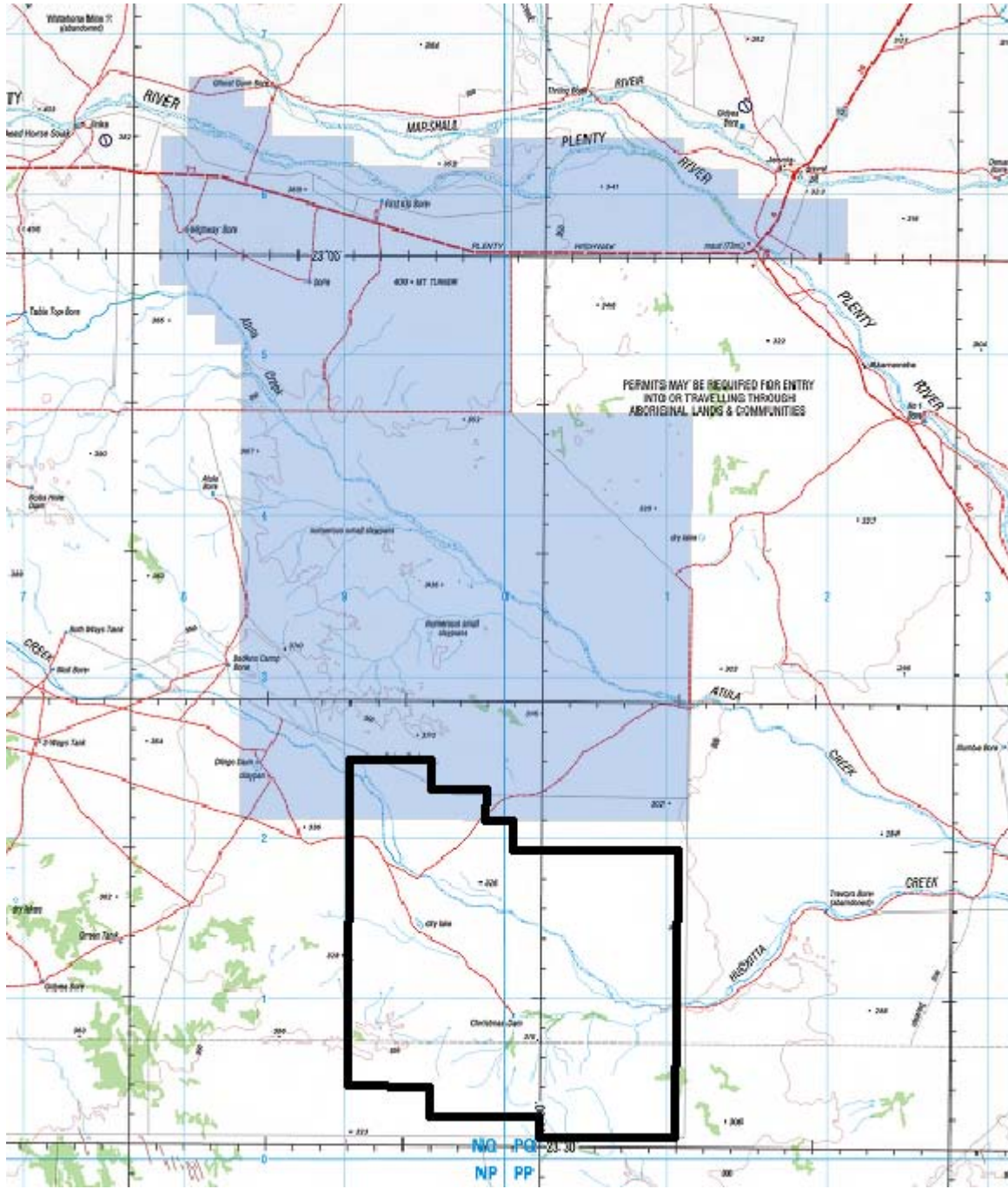
**Drilling:**

**Map Sheet:**

**Abstract:**

Previous work by BHP had outlined elevated Au-Pt-Pd values. Work concentrated on verifying these results. 29 RAB holes (895m) failed to return any significant values.

**EL 22788**



**Report No:**

CR2002-0338

**Title:**

First annual and final report for EL 22788, EL 22789 & EL 22911, year ended 13th December 2002

**Author:**

White, M / BHP Billiton Minerals / White Geoservices

**EL 22788** / EL 22789 / EL 22911

Arunta Province / Arunta Region - Irindina Province

Strangways Metamorphic Complex

Reviews

**Tenure:**

**Province:**

**Stratigraphy:**

**Thesaurus:**

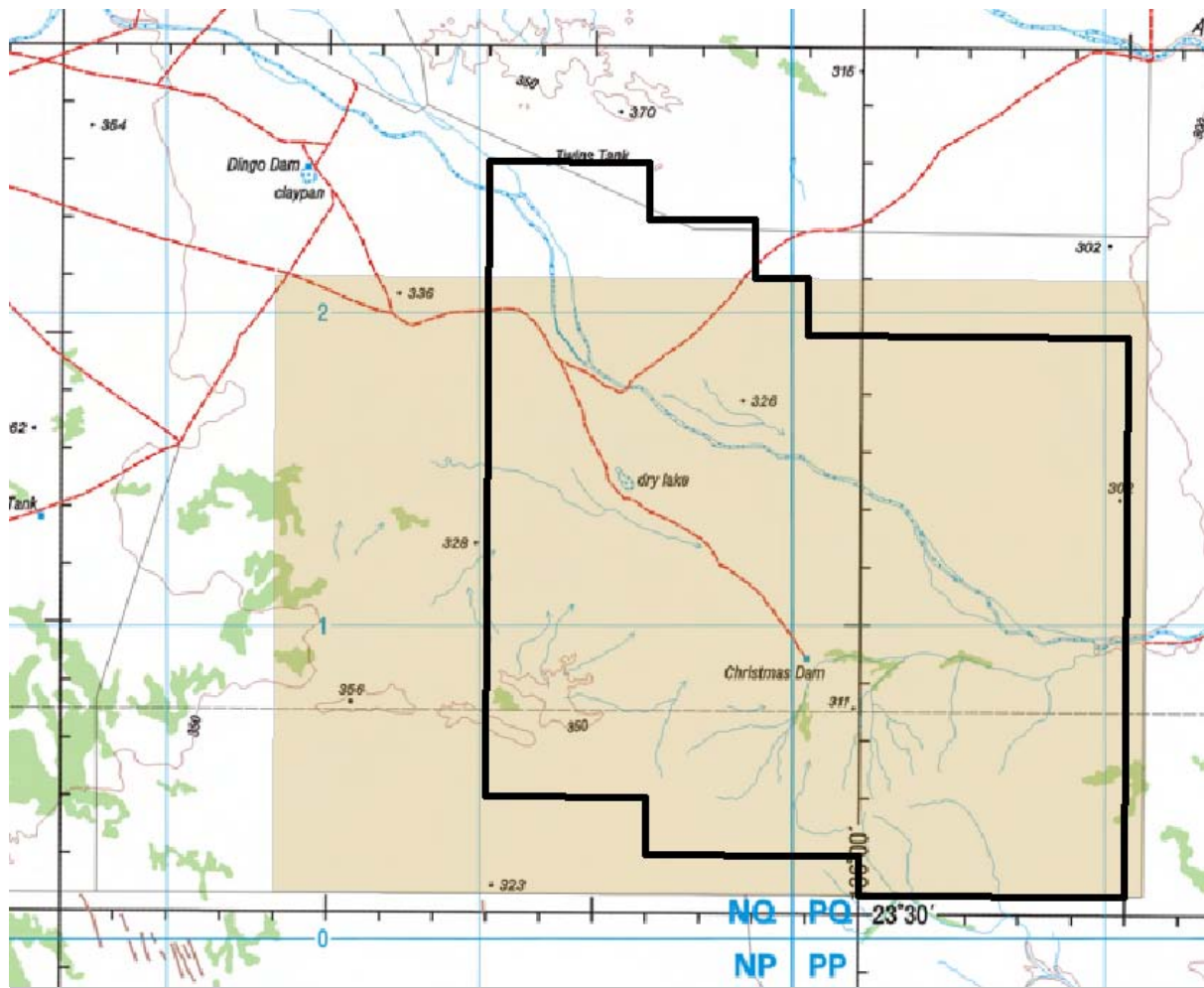
**Map Sheet:**

Illogwa Creek SF5315 / Huckitta SF5311 / Illogwa 6050 / Jinka 6052 / Jervois Range 6152 / Plenty Downs 6151 / Brahma 6051

**Abstract:**

It was no field work carried out during the first year and after reviewing the available information the company decided to surrender the exploration licence.

**EL 22877**



CR2003-0412

Combined first annual and surrender report for EL 22877

Thornett, J / Lee, S / Ausquest

**Report No:**

**Title:**

**Author:**

**Tenure:**

**EL 22877**

Arunta Province / Eromanga Basin / Arunta Region - Irindina Province

**Province:**

Harts Range Group / Reynolds Range Group

**Stratigraphy:**

Palaeoproterozoic Cambrian Fluvial sediments Aeolian Broken Hill type deposits Base metal exploration Evaluation Magnetic interpretation Geological maps Magnetic maps Aerial magnetic maps

**Thesaurus:**

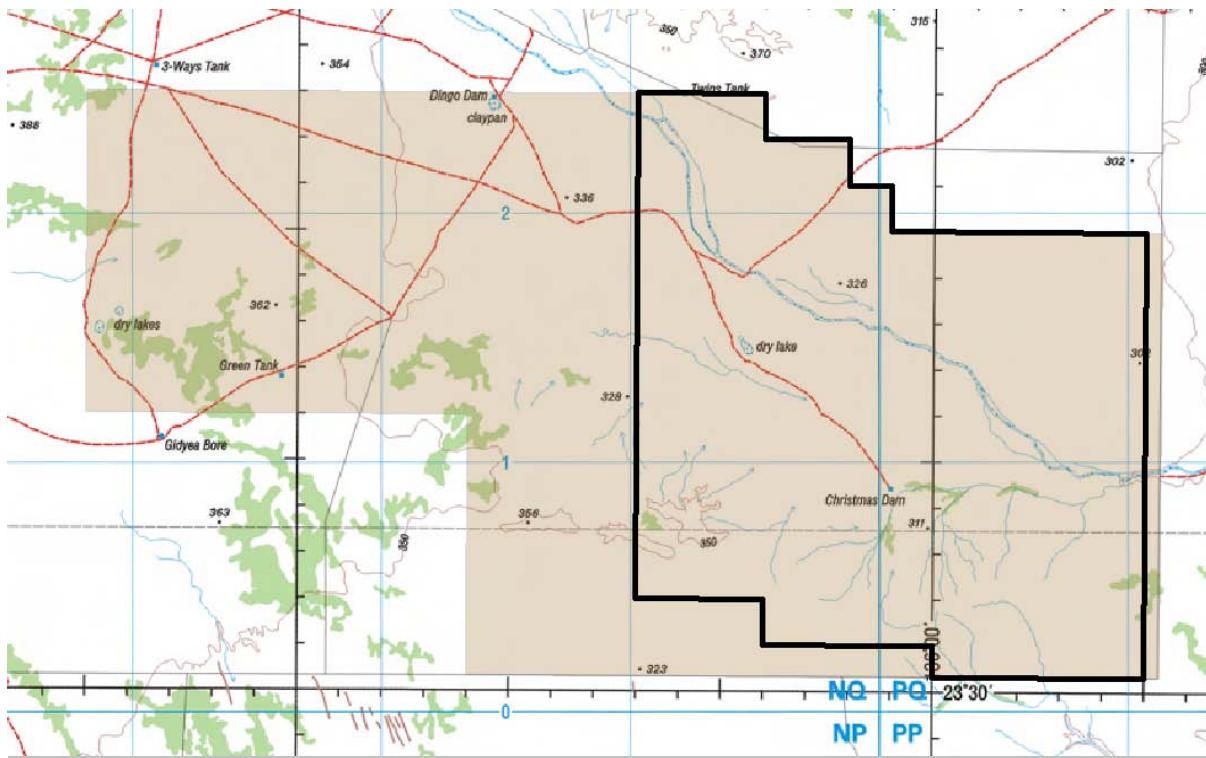
**Map Sheet:**

Illogwa Creek SF5315 / Brahma 6051 / Plenty Downs 6151

**Abstract:**

The definition of magnetically-delineated target belt, with a magnetic and regional gravity character resembling that of Broken Hill, suggests that the main area of interest lies to the north of barely encroaches on EL 22877. The title has been relinquished.

**EL 25991**



No records found.