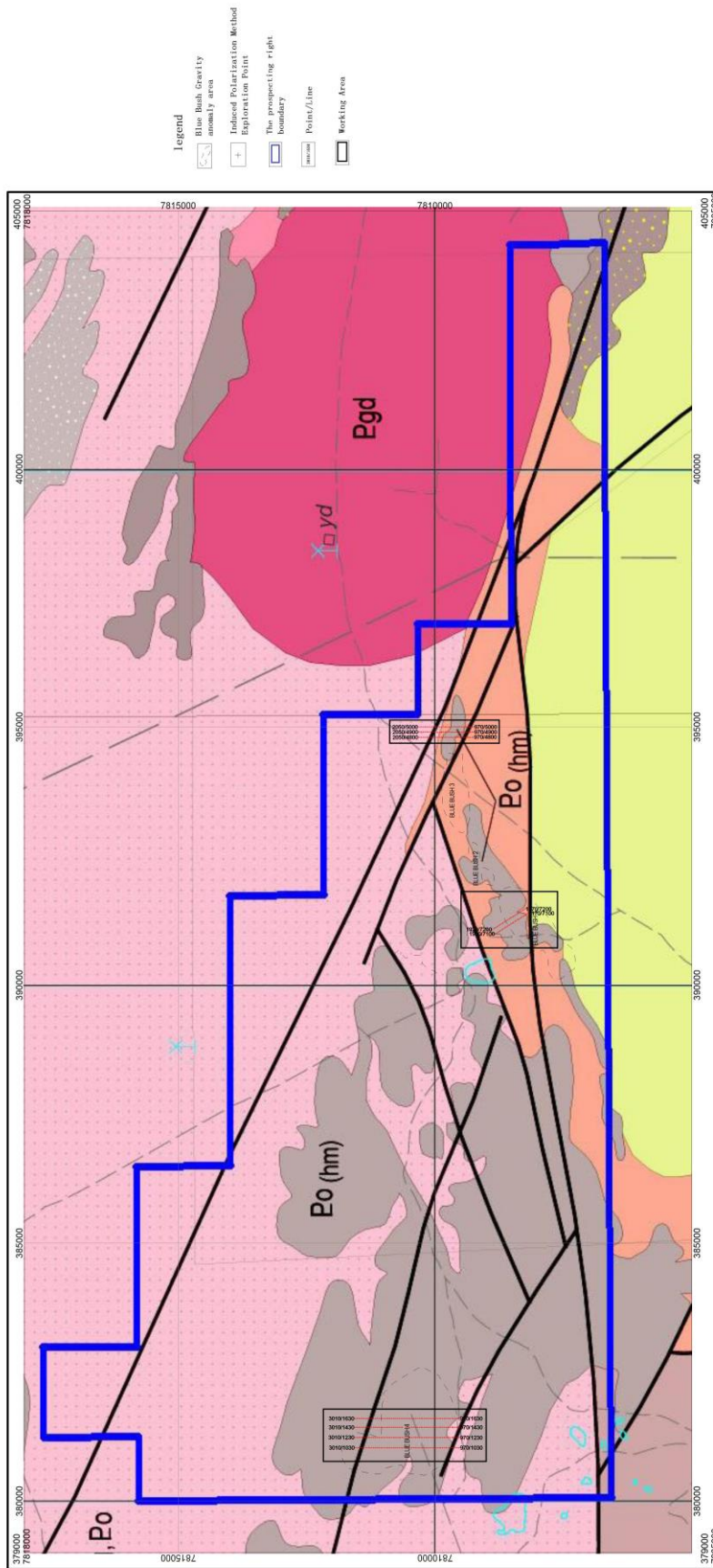


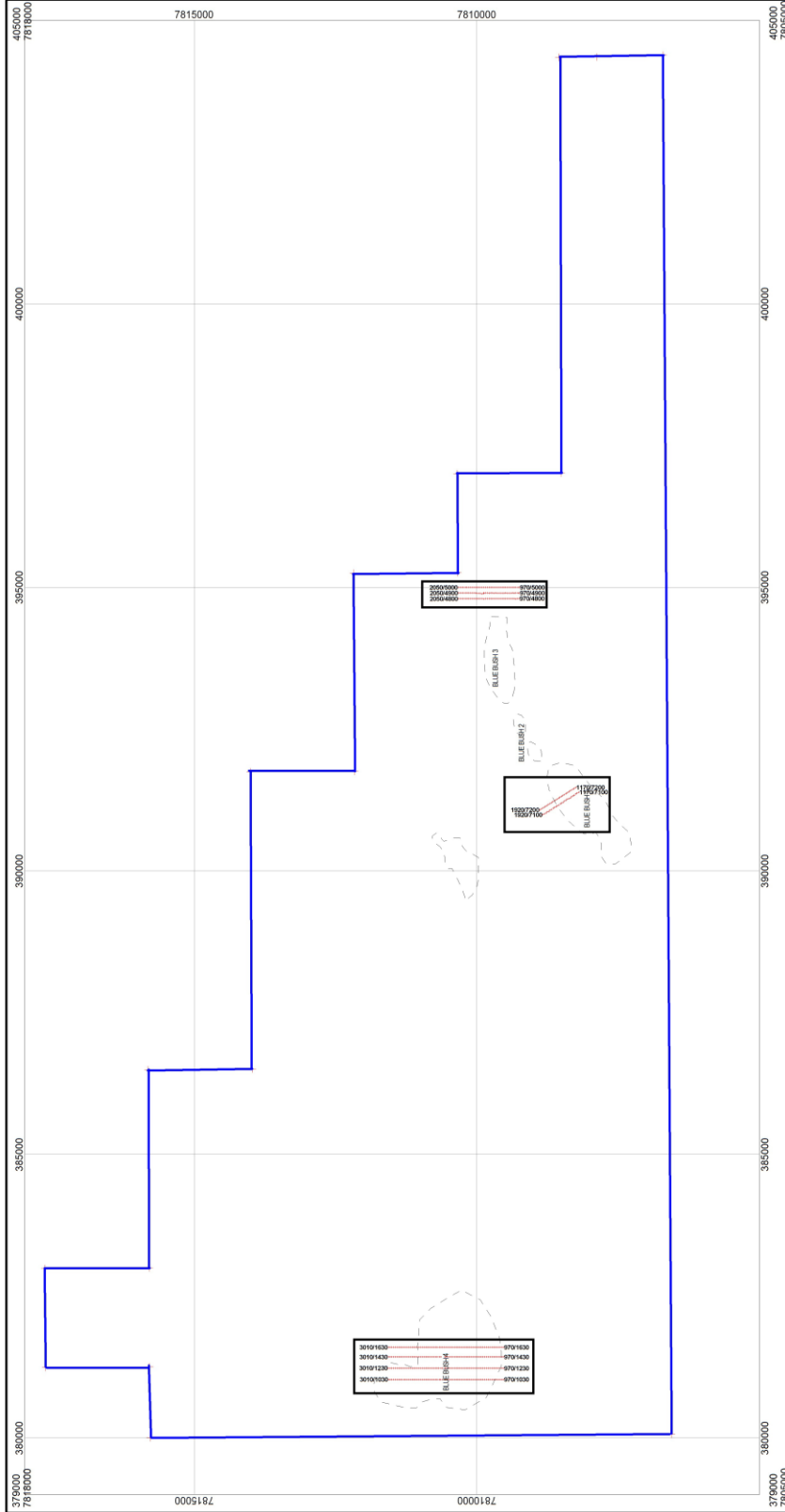
1、 For EL29161 Annual Report:

EL29161 actual material map
scale 1:50000



EL29161 actual material map

scale 1:50000



We carried out 9 IP lines in three areas including A (BlueBush1) 、 B (BlueBush3) 、 D (BlueBush4) , for 12.36km. Details are below:

Stations spacing is 30 meters.

The Line Spacing between Line No.1030 and Line No.1230 is 200 meters;

The Line Spacing between Line No.1230 and Line No.1430 is 200 meters;

The Line Spacing between Line No.1430 and Line No.1630 is 170 meters;

The Line Spacing between Line No.4800 and Line No.4900 is 100 meters;

The Line Spacing between Line No.4900 and Line No.5000 is 100 meters;

Coordinates and length of lines:

line	Starting point	X	Y	End point	X	Y	Length(m)
1030	970	381031	7809530	3010	381031	7811560	2040
1230	970	381229	7809531	3010	381231	7811566	2040
1430	970	381430	7809530	3010	381430	7811564	2040
1630	970	381600	7809530	3010	381600	7811563	2040
4800	970	394801	7809258	2050	394799	7810320	1080
4900	970	394900	7809253	2050	394903	7810320	1080
5000	970	395000	7809250	2050	395000	7810327	1080
7100	1170	391387	7808197	1920	390990	7808830	750
7200	1170	391470	7808251	1920	391076	7808885	750

Details of geophysicist carried out IP survey:

Name	Position	Occupation
Min Yao	Project Manager	Geophysicist
Lingshun Meng	Technical Manager	Senior Geophysicist
Yankun Zheng	Engineer	Geophysicist
Wei Li	Engineer	Geophysicist
Jibin Wang	Engineer	Assistant geophysicist

Due to the low resistivity of near-surface sediment, the effective depth of IP survey is limited. In the survey area, there are no obvious anomalies of polarizability and resistivity. Therefore, the chance of exploring sulfide deposit in this area is low.