



# Northern Gold NL

ACN: 009 620 937  
Lot 128 Finlay Rd, ADELAIDE RIVER, N.T. 0846  
Phone: 08 89767023 Fax: 08 89767025

## EL 9482 FINAL REPORT

to 31<sup>st</sup> October 1996

**Burnside (14/2-II) 1:50,000 scale map sheet**

**Title Holders:- Northern Gold N.L. and Camelot Northern  
Territory Limited**

**Managed by:- Northern Gold N.L.**

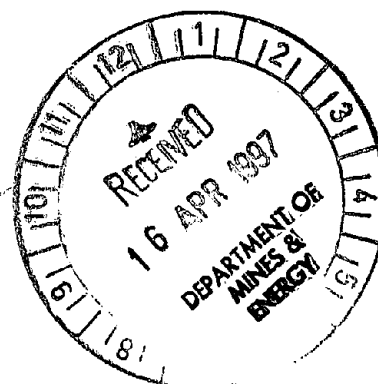
April 1997

Author:- N. Socic

NTDME

Northern Gold N.L., Adelaide River

Northern Gold N.L., Perth Office



CR97/272

## **SUMMARY**

EL 9482 is located approximately 135 kilometres south - east of Darwin, on the Burnside (14/2-II) 1:50,000 scale map sheet.

The licence area consists mainly of Koolpin Formation sediments and Zamu Dolerite. These units trend north - east to south - west through the tenement.

Previous exploration was completed by Geopeko North Australia over EL 1195.

EL 9482, consisting of two graticular blocks, 6 square kilometres in area, was granted to Northern Gold N.L. (50%) and Camelot Northern Territory Limited (50%), on the 5<sup>th</sup> of June 1996 for a period of six years. The tenement is managed by Northern Gold N.L.

The licence has been included with other Northern Gold N.L. controlled tenements in the Yam Creek area under SEL 9591. Substitute Exploration Licence 9591 was granted on the 31<sup>st</sup> of October 1996, for a period of four years.

No work has been completed over EL 9482, by Northern Gold N.L., between June 1996 and October 1996.

## TABLE OF CONTENTS

SUMMARY	2
1.0 INTRODUCTION	4
2.0 GEOLOGY	5
2.1 Regional Geology	5
2.2 Local Geology	5
3.0 EXPLORATION COMPLETED	7
4.0 REFERENCES	7

## LIST OF FIGURES

- Figure 1      Tenement Location Diagram  
Figure 2      Local Geology

## **1.0 INTRODUCTION**

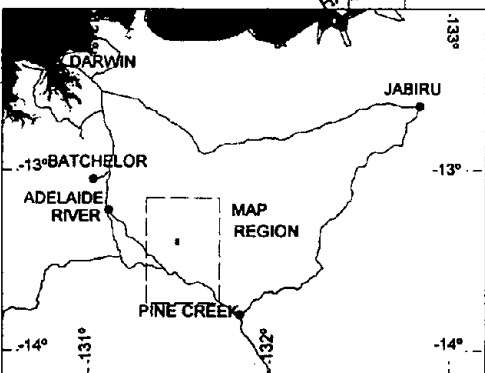
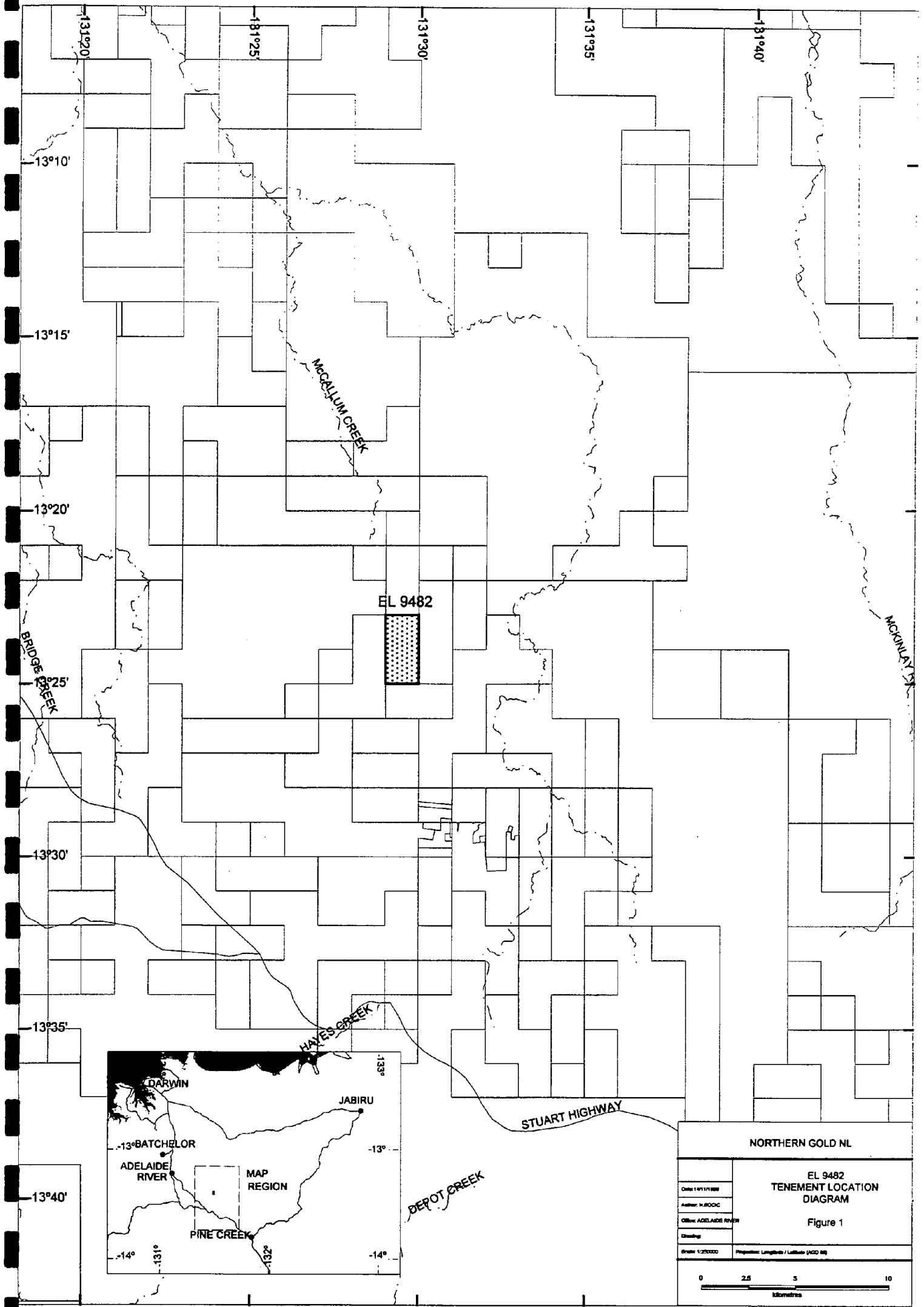
EL 9482 is located approximately 135 kilometres south - east of Darwin, on the Burnside (14/2-II) 1:50,000 scale map sheet. The tenement, which consists of two graticular blocks, 6 square kilometres in area, lies between latitudes 13°23' south and 13°25' south, and longitudes 131°29' east and 131°30' east (Figure 1). EL 9482 is situated within Perpetual Pastoral Lease No. 1111, Ban Ban Springs, held by Ban Ban Springs Station Pty. Ltd.

Access to the tenement is via the Stuart Highway and then along the Fountain Head Road to local access tracks developed by the pastoral lease holder.

EL 9482 was granted to Northern Gold N.L. (50%) and Camelot Northern Territory Limited (50%), on the 5<sup>th</sup> of June 1996, for a period of six years. The tenement is managed by Northern Gold N.L.

The licence has been included with other Northern Gold N.L. controlled tenements in the Yam Creek area under SEL 9591.

Substitute Exploration Licence 9591 was granted on the 31<sup>st</sup> of October 1996, for a period of four years.



NORTHERN GOLD NL	
EL 9482 TENEMENT LOCATION DIAGRAM	
Figure 1	
Date: 1/11/1999	Author: N.RODGE
Office: ADELAIDE RIVER	
Drawing:	
Scale: 1:25000	Projection: Longitude / Latitude (AGD 84)
<div>0 2.5 5 10</div> <div>Kilometres</div>	

## **2.0 GEOLOGY**

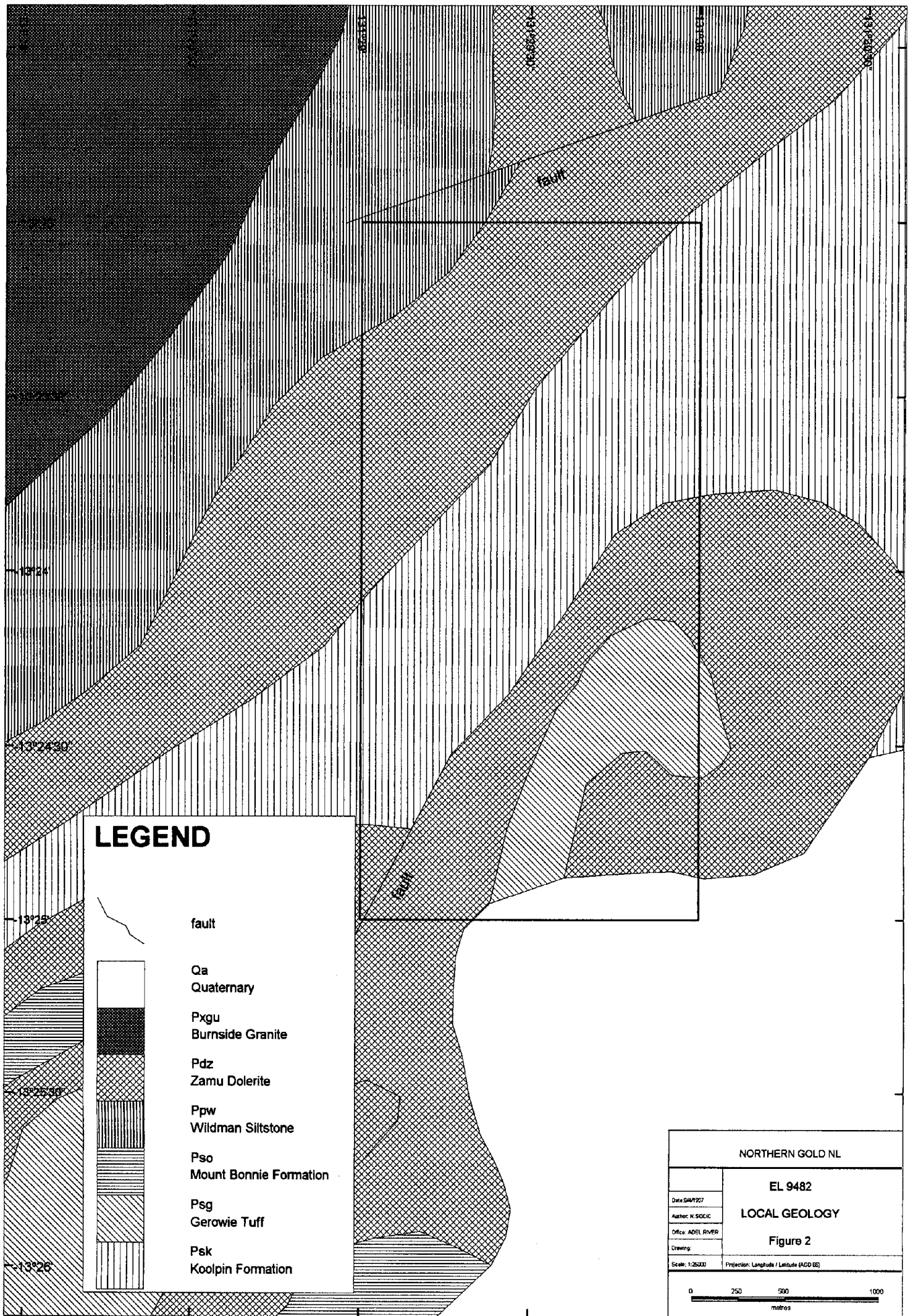
### **2.1 Regional Geology**

EL 9482 is situated within the Pine Creek Geosyncline, a tightly to isoclinally folded sequence of mainly pelitic and psammitic Lower Proterozoic sediments with interlayered tuff units. All the lithologies in the area have been metamorphosed to low, and in places medium grade, metamorphic assemblages. For the purposes of this report the prefix meta is implied, but omitted, from rock names and descriptions. The sequence has been intruded by pre-orogenic dolerite sills of the Zamu Dolerite and a number of late syn-orogenic to post-orogenic Proterozoic granitoids. Largely undeformed Middle and Late Proterozoic, Palaeozoic and Mesozoic strata as well as Cainozoic sediments and laterite overlie the Pine Creek Geosyncline lithologies.

### **2.2 Local Geology**

EL 9482 consists mainly of Koolpin Formation sediments and Zamu Dolerite. These units trend north - east to south - west through the tenement. Small outcrops of Wildman Siltstone are present in the north - west corner of the licence. Gerowie Tuff can be seen in a folded sequence with the Zamu Dolerite in the south - east corner.

Faulting is present throughout the region. The Burnside Granite intrudes to the north - west of EL 9482.



### **3.0 EXPLORATION COMPLETED**

Geopeko North Australia completed exploration over the southern block of EL 1195, which is now covered by the northern block of EL 9482. They carried out airborne magnetic and radiometric surveys, reconnaissance mapping, ground magnetics, induced polarisation reconnaissance surveys, rock chip sampling and a literature and data review (Kirkpatrick, 1980).

No work has been completed over EL 9482 between June 1996 and October 1996.

### **4.0 REFERENCES**

KIRKPATRICK, B. L., (1980). Final Report EL 1195, Ban Ban. Unpublished report by Geopeko North Australia (Report No. D 80/7) for the NTDME.