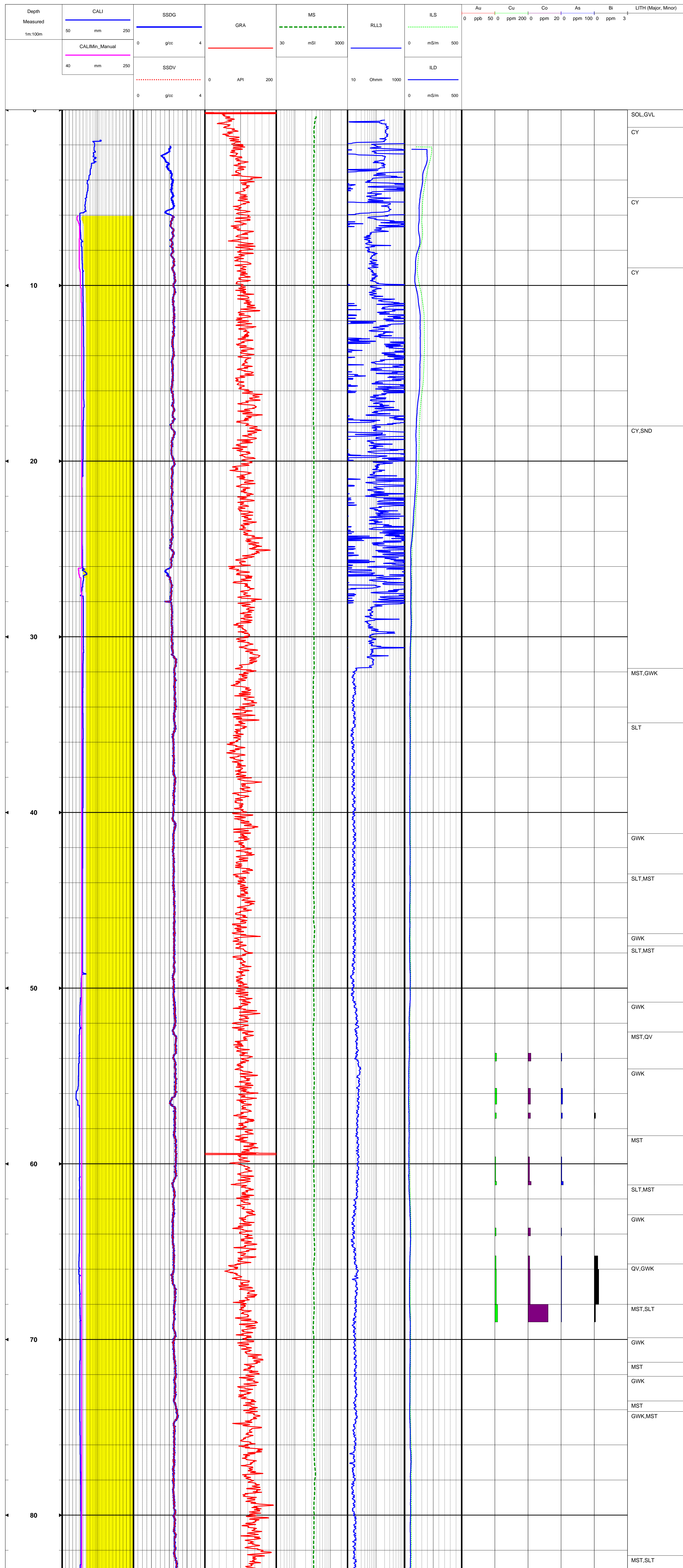
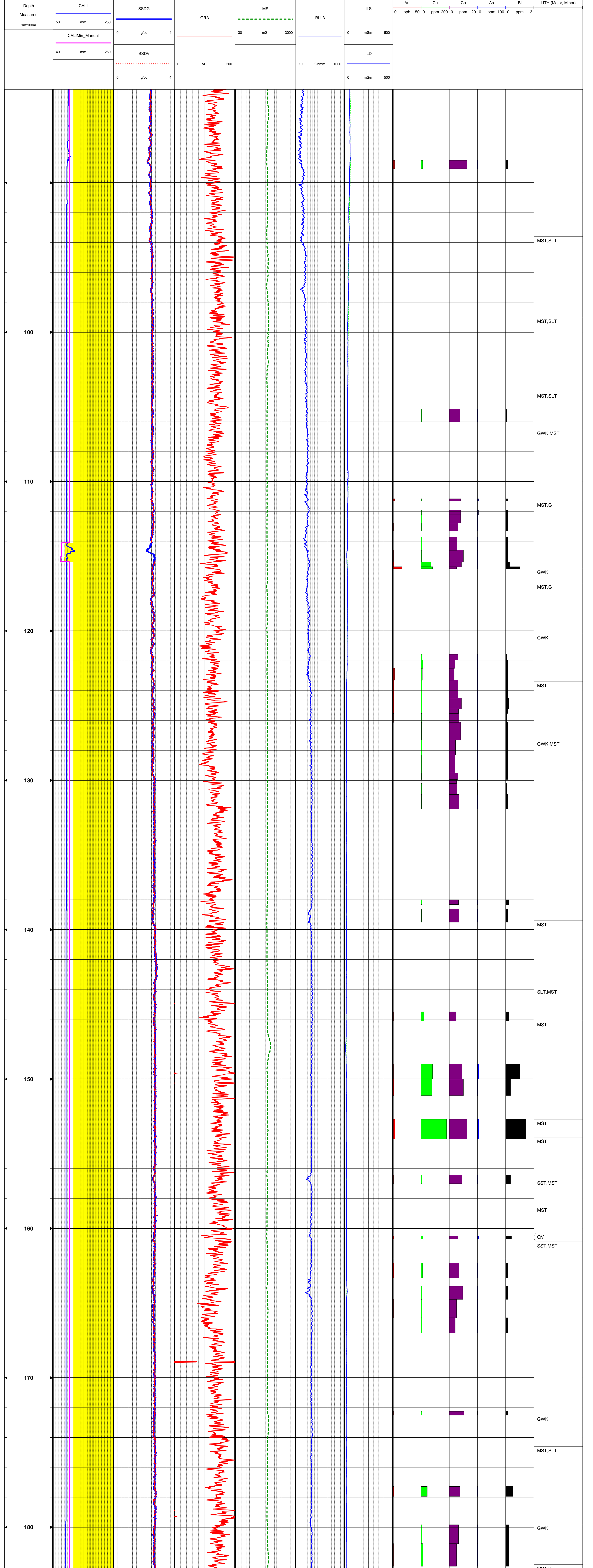
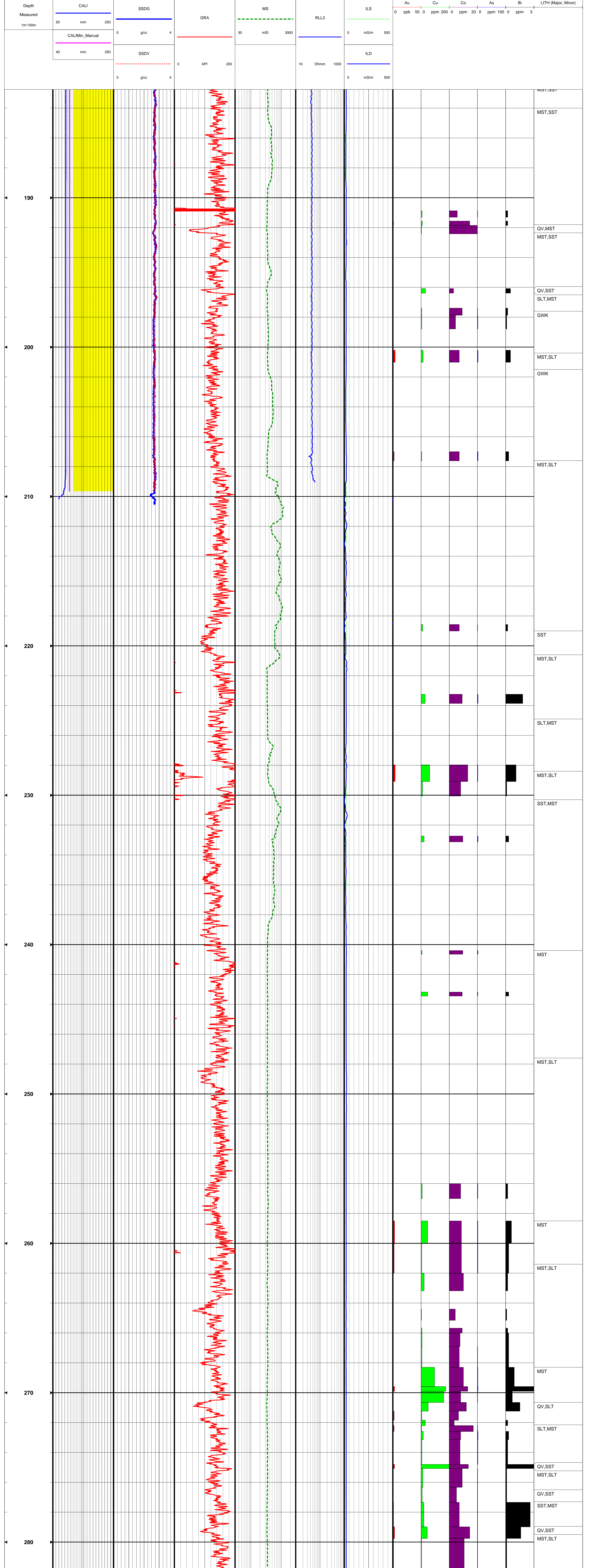
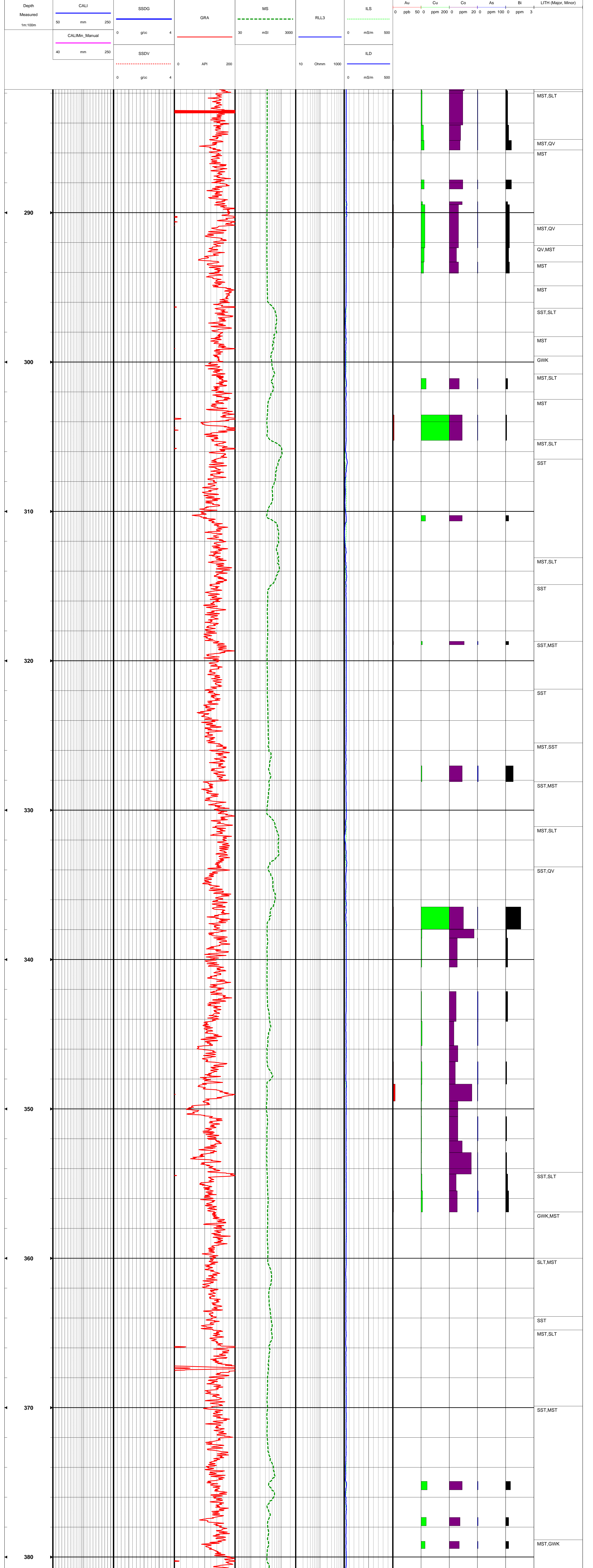


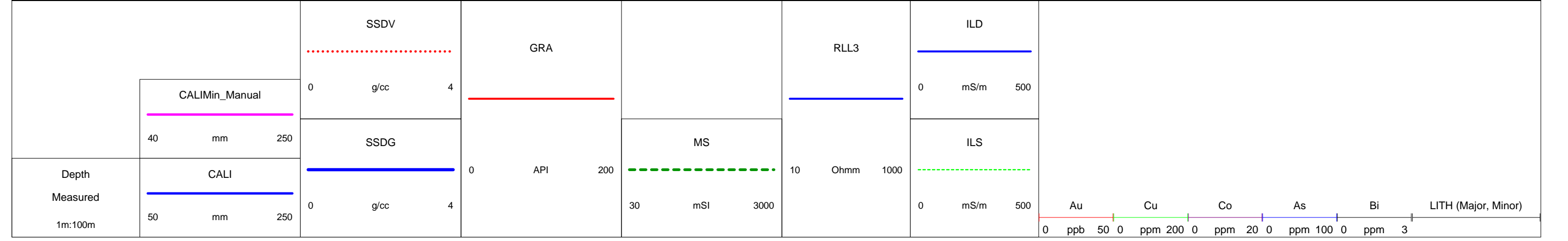
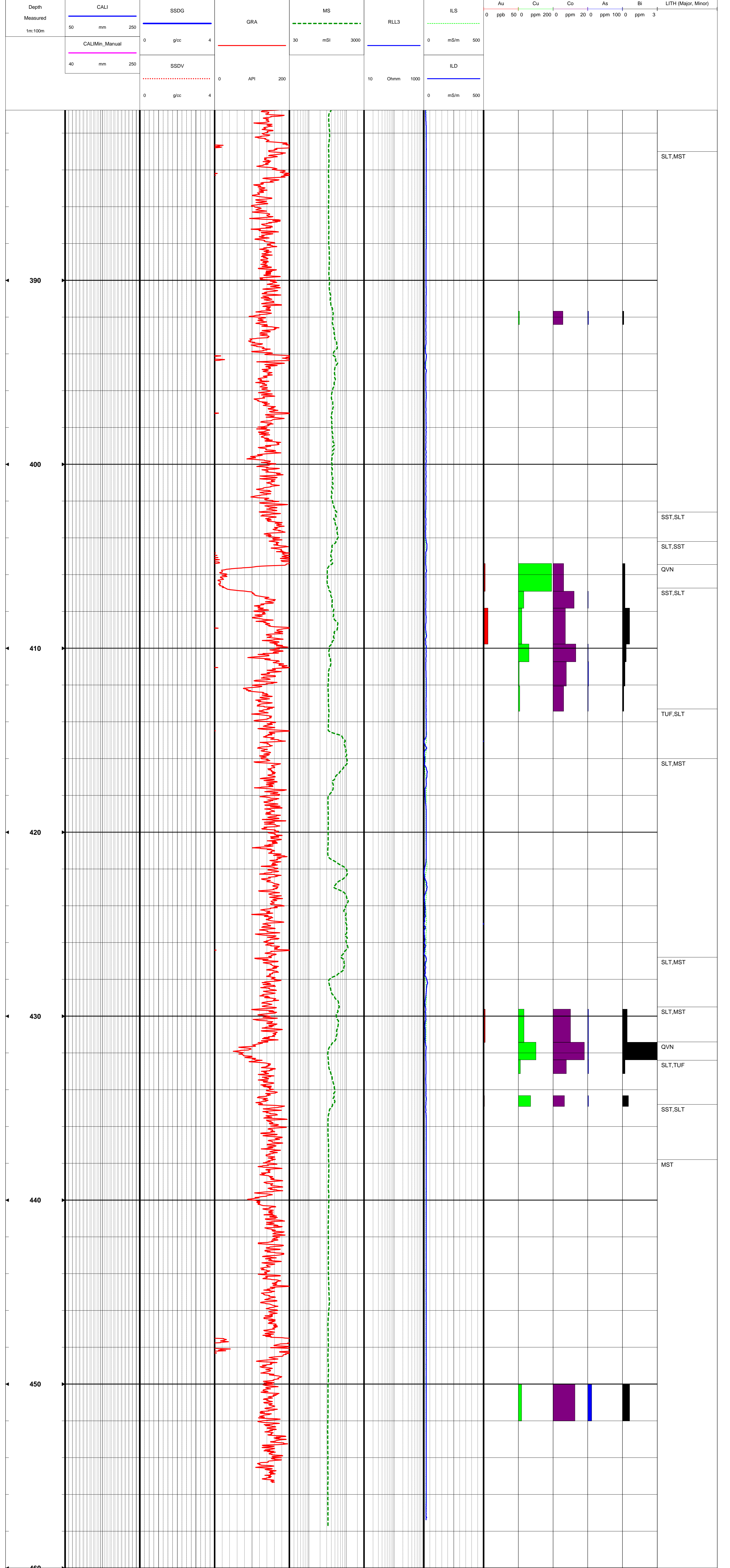
BOREHOLE WIRELINE		LOG TYPE		COMPILATION		BH		12BH003		
"For logging and Interpretation Service"										
STATE	NT	COMPANY	WESTERN DESERT RESOURCES			UWI				
LOCATION	TENNANT CREEK	EASTING	0392920			MGA PROJ	53K			
FIELD		NORTHING	7775905			ELEVATION	m			
LOG DATE	28/08/2012		DRILLED DEPTH	471.2m						
LOGGED DEPTH	458m		DRILLED BY							
INTERVAL (m)			RECORDED BY	BEM						
DATUM	GL (US = 0.1m)		WITNESSED BY							
SERVICE COMPANY	BOREHOLE WIRELINE Pty Ltd		UNIT	BW3						
<b>BOREHOLE RECORD</b>			(NB: INCL=0=Vertical, INCL=90=Horizontal)							
BIT TYPE	BIT SIZE	FROM m	TO m	AZI	INCL	CASING TYPE	SIZE	WEIGHT	FROM m	TO m
HQ	96mm	GL	TD							
<b>FLUID PROPERTIES</b>			<b>LOGGING RUNS</b>							
TYPE (FLUID)	AIR / WATER		TOOL ID	RUN No	START	FINISH	TYPE			
LEVEL (FLUID)	m		DUMMY	1	GL	458	MAIN			
TEMP (FLUID)			GR MDEV EM50	2	458	GL	MAIN			
RES (FLUID)			MSUS	3	458	GL	MAIN			
MUD SAMPLE			RLL3DENS	4	210.8	GL	MAIN			
<b>REMARKS</b>										
RLL3DENS HANGING UP FROM 208m. DIDNT WANT TO RISK GETTING RADIOACTIVE SOURCE STUCK IN HOLE SO LOGGED FROM 210.8m WHICH WAS 3RD HANG UP.										
Manual Setting For SSDV using CALIMin_Manual										











BOREHOLE WIRELINE "For Logging & Interpretation Service"		LOG TYPE	COMPILATION	BH	12BH003
STATE	NT	COMPANY	WESTERN DESERT RESOURCES/JWI	MGA PROJ	53K
LOCATION	TENNANT CREEK	EASTING	0392920	ELEVATION	m
FIELD		NORTHING	7775905		
LOG DATE	28/08/2012	DRILLED DEPTH	471.2m		
LOGGED DEPTH	458m	DRILLED BY			
INTERVAL		RECORDED BY	BEM		
DATUM	GL (US = 0.1m)	WITNESSED BY			
		UNIT	BW3		