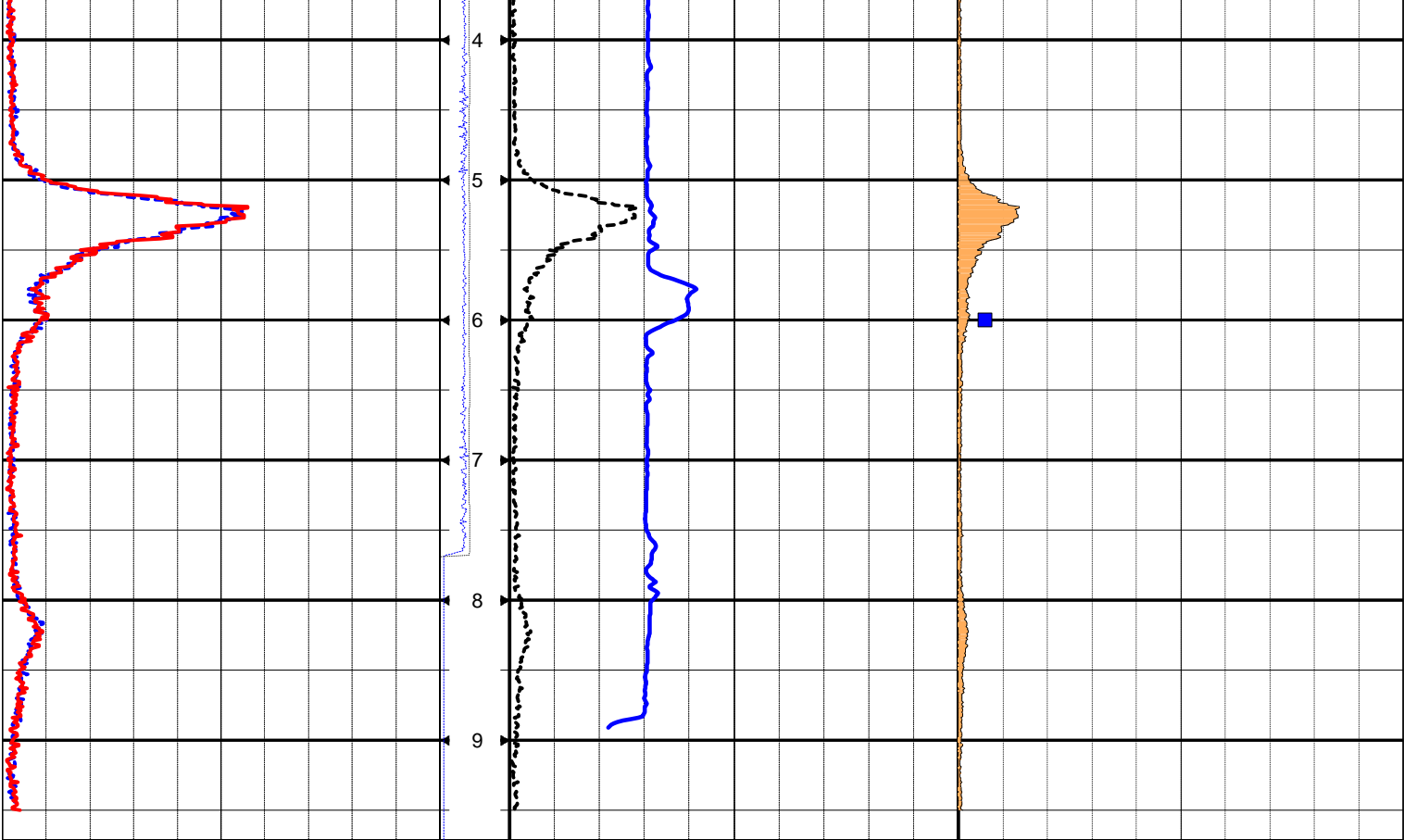





BH

**NS00223**

GROU		Depth	CALI		GReD	
0 observed counts 5000		1m:50m	0 mm 500		GR3837 - 09/07/08 0 ppm eU308 5000	
GROD		TENS	GRTD		TORO eU308	
0 observed counts 5000		5 16	0 counts 10000		0 5000	
		SPED 0 10				



 <b>BOREHOLE WIRELINE</b> <i>"For Logging &amp; Interpretation Service"</i>		LOG TYPE <b>CAL3 GR</b>	BH <b>NS00223</b>
STATE:		COMPANY <b>TORO ENERGY</b>	UWI
LOCATION <b>TILLMOUTH WELL</b>		EASTING	AMG PROJ.
FIELD		NORTHING	ELEVATION
LOG DATE	<b>13/07/08</b>	DRILLED DEPTH	<b>10.5m</b>
LOGGED DEPTH	<b>9.71</b>	DRILLED BY	<b>BOART LOGYEAR</b>
INTERVAL		RECORDED BY	<b>DAC</b>
DATUM	<b>GDA94</b>	WITNESSED BY	
		UNIT:	