



CAMMA, CALIPER, DENSITY LOG
 236 M. - 0 M.
 SLIMLINE UNIT
 SOLPHS

COMPANY PACIFIC OIL & GAS PTY. LTD.
 WELL HUNT 1
 FIELD WILDCAT
 PROVINCE/COUNTY NORTHERN TERRITORY
 COUNTRY/STATE AUSTRALIA
 PERMIT NUMBER EP 10 NI

LOCATION GEORGINA BASIN
 PRVNC/CO. NORTHERN TERRITORY
 FIELD WILDCAT
 WELL HUNT 1
 COMPANY PACIFIC OIL & GAS PTY. LTD.
 PERMIT NUMBER EP 10 NI

PERMANENT DATUM C.I.
 LOC. MEASURED FROM D.F. 2.5 M.
 DRILLING MEASURED FROM D.F. 0 M.

DATE 19-MAY-91
 RUN NUMBER 2
 DEPTH-BRILLIAR 236.9 M.
 DEPTH-COORDE 237 M.
 TEST REGION 0 M.
 LAST READING 29.8 M.
 CASING-BRILLIAR 30 M.
 CASING-FOOTER 6.25 INCH
 BIT SIZE WATER
 HOLE FLUID TYPE
 DENSG./TYPE
 INITIAL LOSS
 SAMPLE SOURCE
 TEM @ MASS TEMP
 TEM @ MASS TEMP
 TEM @ MASS TEMP
 JOURNAL RUN/INCH
 TIME SINCE CIRC
 MAX REC TEMP 36 DEC
 TOOL/PIN/PASSE
 RECORD BY R.A.I.
 ATTENDED BY S. MINNIS

RUN NUMBER	BOREHOLE RECORD		CASING RECORD			
	BIT	FROM TO	SIZE	WEIGHT	FROM TO	
2	6.25 INCH	29.8 M. 236.9 M.	7 INCH	CONDUCTOR	29.8 M.	

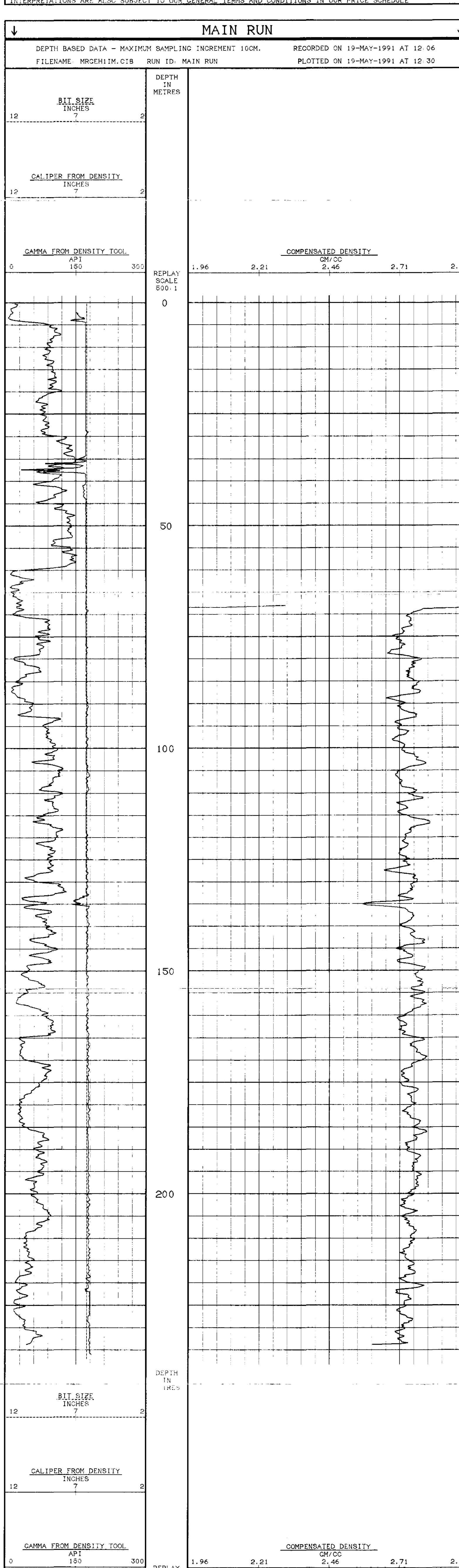
EQUIPMENT	RUN 1	RUN 2	RUN 3	RUN 4
SCU	DD3 227			

REMARKS
 CAMMA, CALIPER, DENSITY LOG 236 M. - 0 M. SLIMLINE UNIT

ALL INTERPRETATIONS ARE OPINIONS BASED ON INFERENCES FROM ELECTRICAL OR OTHER MEASUREMENTS AND WE CANNOT AND DO NOT GUARANTEE THE ACCURACY OR CORRECTNESS OF ANY INTERPRETATIONS. A USER SHALL NOT EXCEPT IN THE CASE OF GROSS OR WILLFUL NEGLIGENCE ON OUR PART BE LIABLE OR RESPONSIBLE FOR ANY LOSS, COSTS, DAMAGES OR EXPENSES INCURRED OR SUSTAINED BY ANYONE RESULTING FROM ANY INTERPRETATION MADE BY ANY OF OUR OFFICERS, AGENTS OR EMPLOYEES. THESE INTERPRETATIONS ARE ALSO SUBJECT TO OUR GENERAL TERMS AND CONDITIONS IN OUR PRICE SCHEDULE

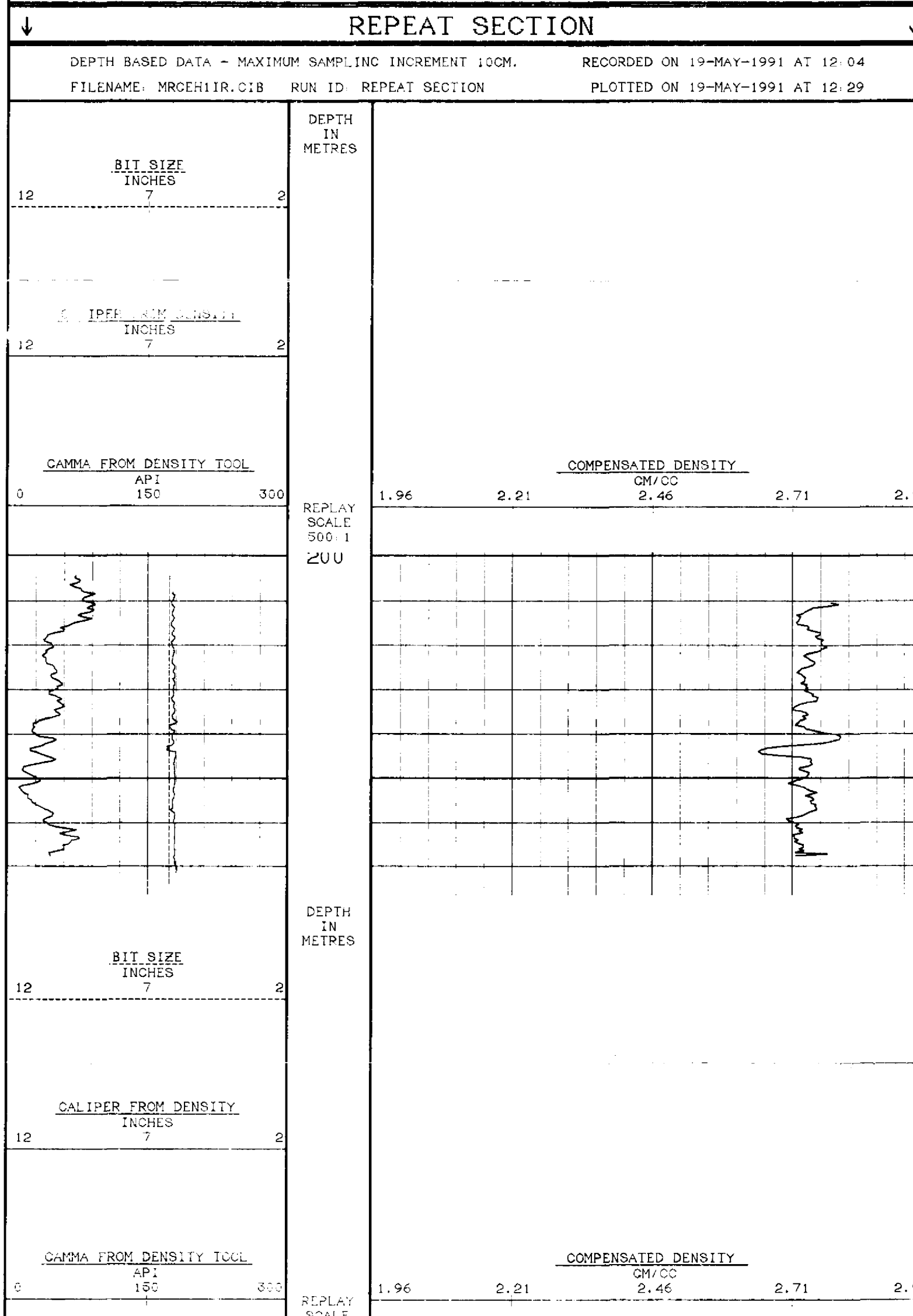
MAIN RUN

DEPTH BASED DATA - MAXIMUM SAMPLING INCREMENT 10CM. RECORDED ON 19-MAY-1991 AT 12:06
 FILENAME: MRCEH11M.C1B RUN ID: MAIN RUN PLOTTED ON 19-MAY-1991 AT 12:30



REPEAT SECTION

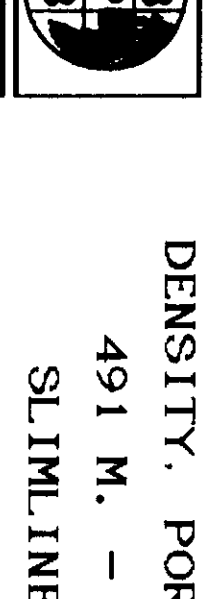
DEPTH BASED DATA - MAXIMUM SAMPLING INCREMENT 10CM. RECORDED ON 19-MAY-1991 AT 12:04
 FILENAME: MRCEH11R.C1B RUN ID: REPEAT SECTION PLOTTED ON 19-MAY-1991 AT 12:29



REPEAT SECTION

DEPTH BASED DATA - MAXIMUM SAMPLING INCREMENT 10CM. RECORDED ON 19-MAY-1991 AT 12:04
 FILENAME: MRCEH11R.C1B RUN ID: REPEAT SECTION PLOTTED ON 19-MAY-1991 AT 12:29

COMPANY PACIFIC OIL & GAS PTY. LTD.
 WELL HUNT 1
 FIELD WILDCAT
 PROVINCE/COUNTY NORTHERN TERRITORY
 COUNTRY/STATE AUSTRALIA



DENSITY, POROSITY LOG
491 M. - 236 M.
SLIMLINE UNIT

COMPANY PACIFIC OIL & GAS PTY. LTD.
WELL HUNT 1
FIELD WILDCAT
PROV/INTE/COUNTY NORTHERN TERRITORY
AUSTRALIA
PERMIT NUMBER EP 10 NI

LOCATION CHOCOMA BASIN
OTHER SERVICES
MSI, RR2
1, 200

PERMANENT DATUM G.T. ELEVATION 372 M.
LOG MEASURED FROM D.F. 2.5 M. ABOVE PERMANENT DATUM
DRILLING MEASURED FROM D.F. 372 M. 26-MAY-91
DATE 26-MAY-91
FIRST LOGGERS 493.5 M.
LAST LOGGERS 236 M.

BIT SIZE 4.75 INCH
HOLE FLUID TYPE FOLWHR
DRHS, VISC. 0.3
MUD LOSS 9 ACTUAL
MUD & MUDS TEMP 3.58/3.60/3.62/3.64/3.66/3.68/3.70/3.72/3.74/3.76/3.78/3.80/3.82/3.84/3.86/3.88/3.90/3.92/3.94/3.96/3.98/4.00/4.02/4.04/4.06/4.08/4.10/4.12/4.14/4.16/4.18/4.20/4.22/4.24/4.26/4.28/4.30/4.32/4.34/4.36/4.38/4.40/4.42/4.44/4.46/4.48/4.50/4.52/4.54/4.56/4.58/4.60/4.62/4.64/4.66/4.68/4.70/4.72/4.74/4.76/4.78/4.80/4.82/4.84/4.86/4.88/4.90/4.92/4.94/4.96/4.98/5.00

RUN NUMBER 2.4
DATE 26-MAY-91
FIRST LOGGERS 493.5 M.
LAST LOGGERS 236 M.

BIT SIZE 4.75 INCH
HOLE FLUID TYPE FOLWHR
DRHS, VISC. 0.3
MUD LOSS 9 ACTUAL
MUD & MUDS TEMP 3.58/3.60/3.62/3.64/3.66/3.68/3.70/3.72/3.74/3.76/3.78/3.80/3.82/3.84/3.86/3.88/3.90/3.92/3.94/3.96/3.98/4.00/4.02/4.04/4.06/4.08/4.10/4.12/4.14/4.16/4.18/4.20/4.22/4.24/4.26/4.28/4.30/4.32/4.34/4.36/4.38/4.40/4.42/4.44/4.46/4.48/4.50/4.52/4.54/4.56/4.58/4.60/4.62/4.64/4.66/4.68/4.70/4.72/4.74/4.76/4.78/4.80/4.82/4.84/4.86/4.88/4.90/4.92/4.94/4.96/4.98/5.00

RECORDED BY K.A.L.
DATE 26-MAY-91

NUMBER	BIT	FROM	TO	SIZE	VEIGHT	FROM	TO
2.4	4.06 INCH	420.75 M.	493.05 M.				
	4.36 INCH	237 M.	420.75 M.				
	6 1/4 INCH	31.9 M.	237 M.	5 INCH	13 PPF	29.0 M.	236.5 M.
	6 1/2 INCH	2.5 M.	31.9 M.	7 INCH	24 PPF	4.2 M.	29.0 M.

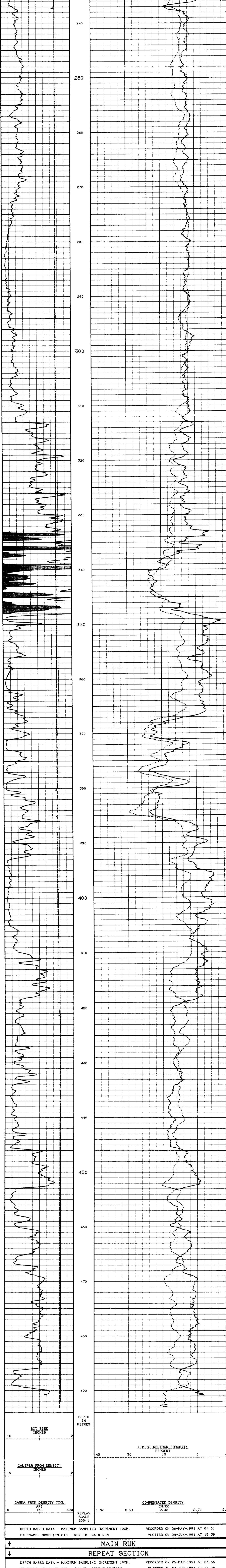
EQUIPMENT	RUN 1	RUN 2	RUN 3	RUN 4
9CU				

REMARKS
DENSITY, POROSITY LOG 491 M. - 236 M. SLIMLINE UNIT

ALL INTERPRETATIONS ARE OPINIONS BASED ON INFERENCE FROM ELECTRICAL OR OTHER MEASUREMENTS AND WE CANNOT AND DO NOT GUARANTEE THE ACCURACY OR CORRECTNESS OF ANY INTERPRETATIONS. WE SHALL NOT BE RESPONSIBLE FOR ANY LOSS, COSTS, DAMAGES OR EXPENSES INCURRED OR SUSTAINED BY ANYONE RESULTING FROM ANY INTERPRETATION MADE BY ANY OF OUR OFFICERS, AGENTS OR EMPLOYEES. THESE INTERPRETATIONS ARE ALSO SUBJECT TO OUR GENERAL TERMS AND CONDITIONS IN OUR PRICE SCHEDULE.

MAIN RUN

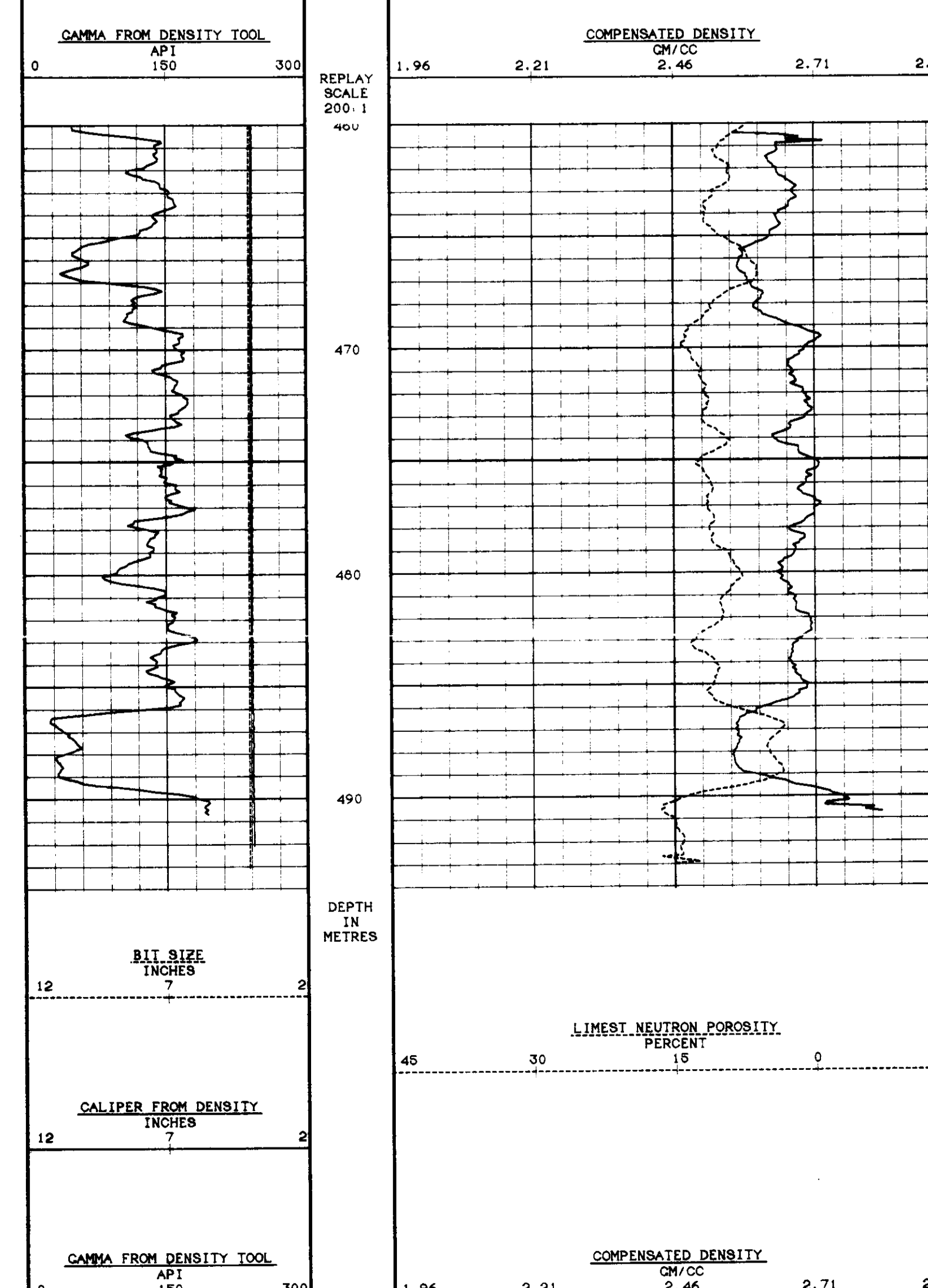
DEPTH BASED DATA - MAXIMUM SAMPLING INCREMENT 10CM. RECORDED ON 26-MAY-1991 AT 04:01
FILENAME: MRGEH1M.C18 RUN ID: MAIN RUN PLOTTED ON 24-JUN-1991 AT 13:39



DEPTH BASED DATA - MAXIMUM SAMPLING INCREMENT 10CM. RECORDED ON 26-MAY-1991 AT 04:01
FILENAME: MRGEH1M.C18 RUN ID: MAIN RUN PLOTTED ON 24-JUN-1991 AT 13:39

REPEAT SECTION

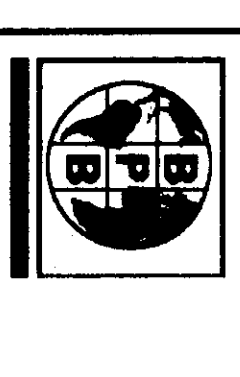
DEPTH BASED DATA - MAXIMUM SAMPLING INCREMENT 10CM. RECORDED ON 26-MAY-1991 AT 03:56
FILENAME: MRGEH1R.C18 RUN ID: REPEAT SECTION PLOTTED ON 24-JUN-1991 AT 13:38



DEPTH BASED DATA - MAXIMUM SAMPLING INCREMENT 10CM. RECORDED ON 26-MAY-1991 AT 03:56
FILENAME: MRGEH1R.C18 RUN ID: REPEAT SECTION PLOTTED ON 24-JUN-1991 AT 13:38

REPEAT SECTION

COMPANY PACIFIC OIL & GAS PTY. LTD.
WELL HUNT 1
FIELD WILDCAT
PROVINCE/COUNTY NORTHERN TERRITORY
COUNTRY/STATE AUSTRALIA



RESISTIVITY LOG
491 M. - 236 M.
SLIMLINE UNIT
3044HS

LOCATION GEORGINA BASIN
PRVNC/OO. NORTHERN TERRITORY
FIELD WILDCAT
WELL HUNT 1
COMPANY PACIFIC OIL & GAS PTY. LTD.
VILLDCAT
PROVINCE/COUNTY NORTHERN TERRITORY
COUNTRY/STATE AUSTRALIA
PERMIT NUMBER EP 10 NI
OTHER SERVICES MS1.DD3.NN1
1:500

DATE 26-MAY-91
PERMANENT DATUM G.L.
ELEVATION 372 M
DRILLING MEASURED FROM D.F. 2.9 M. ABOVE PERMANENT DATUM
DATE 26-MAY-91
ELEVATION 372 M
DATE 26-MAY-91
ELEVATION 372 M
DATE 26-MAY-91
ELEVATION 372 M

PERMITS: 1:500

DEPTH DETERMINED BY 493.05 M.
FIRST READING 493.05 M.
LAST READING 493.05 M.
CORRECTION 0.00 M.
CORRECTED 493.05 M.
CORRECTING LOGGERS

BIT SIZE 4.05 INCH
HOLE FLUID TYPE POLYMER
DENS./VISC. 0.5 / 42
PH/FLUID LOSS 9 / 16
SAMPLE SOURCE ACTIVE
RM @ MEAS TEMP 3.0@2300C
RM @ MEAS TEMP 3.0@2300C
SOURCE: RM/RMC 3.0@2300C
RM @ BIT
LINE SINC. CIRC 9 HRS
NO. REC. TEMP 42 DEC
EQUIPMENT/BASE VASS BME
RECORDED BY K.A.L.
WITNESSED BY C.V.

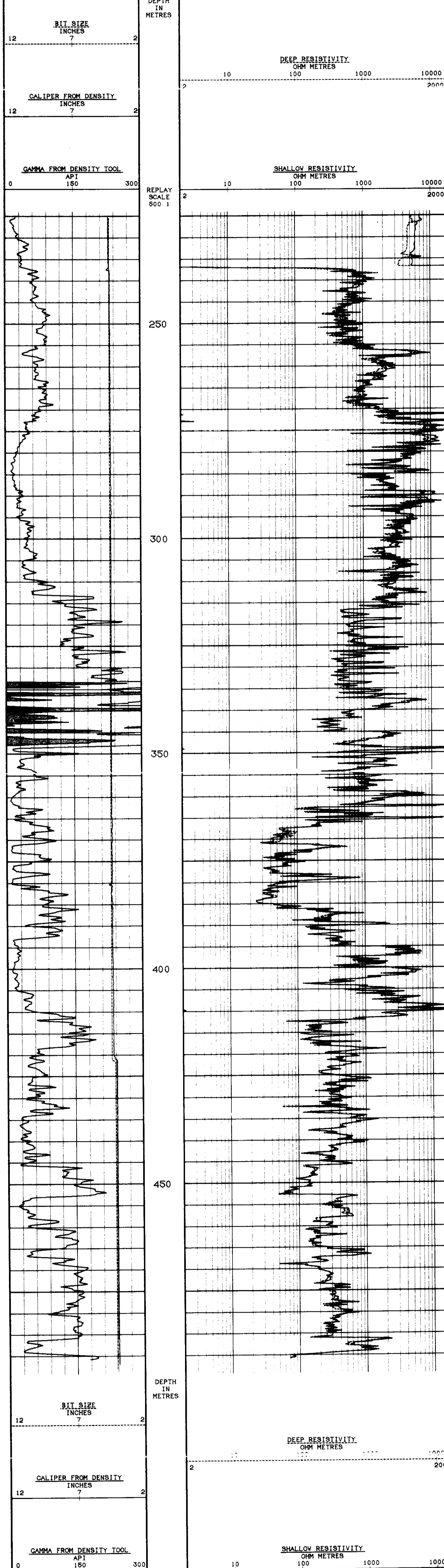
RUN NUMBER	BOREHOLE RECORD		CASING RECORD			
	BIT	FROM TO	SIZE	WEIGHT	FROM TO	
3.4	4.05 INCH	420.75 M. 493.05 M.				
	6 1/4 INCH	31.9 M. 237 M.	5 INCH	13 PPF	29.8 M. 236.5 M.	
	8 1/2 INCH	2.5 M. 31.9 M.	7 INCH	24 PPF	4.2 M. 29.8 M.	
EQUIPMENT		RUN 1	RUN 2	RUN 3	RUN 4	
SCU						

REMARKS
RESISTIVITY LOG 491 M. - 236 M. SLIMLINE UNIT

ALL INTERPRETATIONS ARE OPINIONS BASED ON INFERENCE FROM ELECTRICAL OR OTHER MEASUREMENTS AND WE CANNOT, AND DO NOT, GUARANTEE THE ACCURACY OR CORRECTNESS OF ANY INTERPRETATIONS. WE SHALL NOT BE LIABLE OR RESPONSIBLE FOR ANY LOSS, COSTS, DAMAGES OR EXPENSES INCURRED OR SUSTAINED BY ANYONE RESULTING FROM ANY INTERPRETATION MADE BY ANY OF OUR OFFICERS, AGENTS OR EMPLOYEES. THESE INTERPRETATIONS ARE ALSO SUBJECT TO OUR GENERAL TERMS AND CONDITIONS IN OUR PRICE SCHEDULE.

MAIN RUN

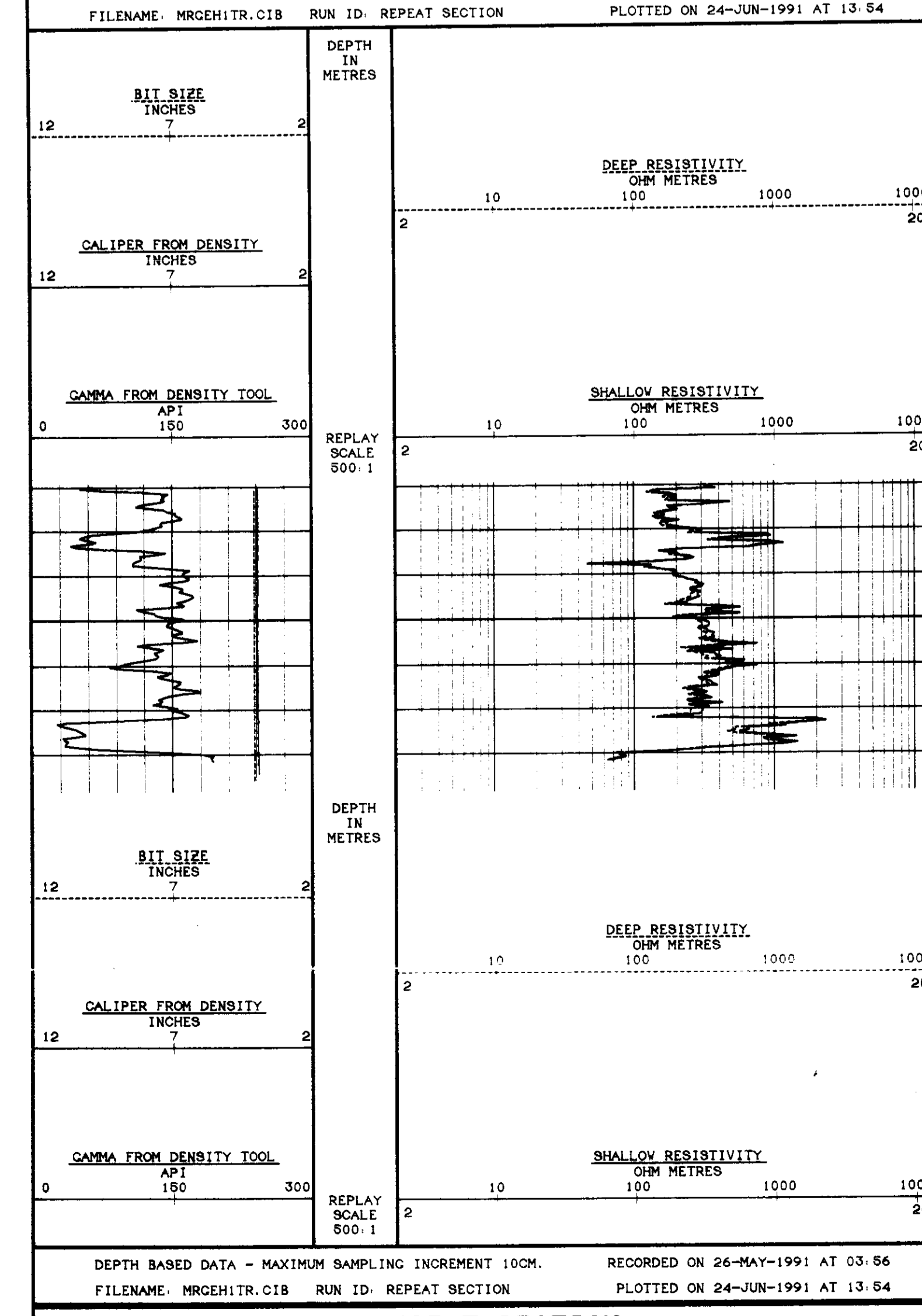
DEPTH BASED DATA - MAXIMUM SAMPLING INCREMENT 10CM. RECORDED ON 26-MAY-1991 AT 04.01
FILENAME: MRGEH1M.CIB RUN ID: MAIN RUN PLOTTED ON 24-JUN-1991 AT 13.55



DEPTH BASED DATA - MAXIMUM SAMPLING INCREMENT 10CM. RECORDED ON 26-MAY-1991 AT 04.01
FILENAME: MRGEH1M.CIB RUN ID: MAIN RUN PLOTTED ON 24-JUN-1991 AT 13.55

REPEAT SECTION

DEPTH BASED DATA - MAXIMUM SAMPLING INCREMENT 10CM. RECORDED ON 26-MAY-1991 AT 03.56
FILENAME: MRGEH1R.CIB RUN ID: REPEAT SECTION PLOTTED ON 24-JUN-1991 AT 13.54



DEPTH BASED DATA - MAXIMUM SAMPLING INCREMENT 10CM. RECORDED ON 26-MAY-1991 AT 03.56
FILENAME: MRGEH1R.CIB RUN ID: REPEAT SECTION PLOTTED ON 24-JUN-1991 AT 13.54

COMPANY PACIFIC OIL & GAS PTY. LTD.
WELL HUNT 1
FIELD WILDCAT
PROVINCE/COUNTY NORTHERN TERRITORY
COUNTRY/STATE AUSTRALIA