

## ENCLOSURE 2

# MAGELLAN PETROLEUM (N.T.) PTY. LTD.

## COMPOSITE WELL LOG

PETROLEUM TENEMENT : OIL PERMIT NO. 56

WELL : NORTHWEST MEREENIE NO. 1

STATE : NORTHERN TERRITORY

4 MILE SHEET : MT LIEBIG

Basin : AMADEUS

WELL STATUS : ABANDONED

LOCATION : 23° 53' 22" South  
131° 22' 27" East

ELEVATION : KB 2,402'  
GRD 2,385'

Date Spudded : 11-7-69  
Date Drilling Stopped : 4-8-69  
Date Rig Released : 7-8-69  
Total Depth : 5,000'

HOLE SIZE		
Inches	From (KB=0)	To
26	0'	34'
17 1/2	34'	245'
12 1/2	245'	1,972'
8 3/4	1,972'	5,000'

CASING				
Inches	Wt. (lbs) Gr.	Depth (ft.)	Cmt. (ex.)	Cmt'd To
20 Cond.	—	34'	15	Surface
13 3/8	48 H40	245'	329	Surface
9 5/8	36 J55	1,963'	350	1,026'

CEMENT PLUGS		
From	To	Sacks
Surface	100'	45
1,835'	2,098'	113
2,098'	?	113
4,044'	4,200'	70

Perforations : None

Well Head Fittings : Steel plate with valve welded on top of 9 5/8" casing.  
Drilled by : Oil Drilling and Exploration (N.T.) Pty. Ltd.  
Logged by : Welox  
Drilling Method : Rotary  
Cement by : Halliburton

Lithology by : L. G. G. Pearce

ELECTRIC LOG DATA	
Run Number	1
Date	5-8-69
Footage Logged	3,037'
Logged from	4,998'
Logged to	1,961'
Total Depth—Electric Log	5,003'
Total Depth—Driller	5,000'
Casing Shoe—Electric Log	1,961'
Casing Shoe—Driller	1,963'
Bit Size	8 3/4"
Mud Type	Salt water & Gel.
— Treatment	—
— Water loss ccs/30 m	—
— Weight lbs/gal.	8.5
— Viscosity (marsh) sec.	36
— pH @ Measured Temperature	6.5 @ 20°C.
Rm @ Measured Temperature M <sup>5</sup> /M	4.40 @ 78° F.
Rmf @ Measured Temperature	4.22 @ 78° F.
Rm <sub>c</sub> @ Measured Temperature	4.60 @ 78° F.
Rm @ BHT	2.85 @ 137° F.
Max. Record Temperature	137° F @ 4,950'
Recorded	L. Patterson

RADIOMETRIC LOG DATA	
Type of Log	Gamma
Run Number	1
Date	5-8-69
Total Depth—Driller	5,000'
Top of Logged Interval	Surface
Bottom of Logged Interval	4,998'
Type of Fluid in Hole	Salt water & Gel.
Fluid level	Surface
Max. recorded temp.	137° F @ 4,950'
Neutron source, strength, type	—
Source Spacing	—
Length of measuring device	—
O.D. of instrument in.	3 1/2"
Time Constant—secs.	2
Logging speed—ft/min.	25
Statistical Variation in.	—
Sensitivity reference	186
Recorded by	L. Patterson

### OTHER ELECTRICAL LOGS

ACOUSTIC VELOCITY : 4,998' — 1,961'  
CALIPER : 4,969' — 1,961'

### WELL SYMBOLS

○	Gas show, slight.
○○	Gas show, strong
●	Oil show, slight
●●	Oil show, strong
●○	Oil and Gas show
◇	Fluorescence
11.2 v	Circulation loss partial and mud weight
11.2 vv	Circulation loss complete and mud weight
▲	Casing shoe
RR	Rerun bit
↑	Blowout
■	Core, Interval, No. and recovery
▷	Sidewall core
⋮	Perforated interval
⊕	Formation test: Interval — ① 0.H. ② in CGS.
⊗	Plugged interval
RM	Reamer
CB	Core bit

### LITHOLOGIC REFERENCE

#### ROCK TYPES

	Conglomerate
	Sandstone
	Siltstone
	Shale
	Limestone
	Dolomite

#### ACCESSORIES

	Pebby		Kaolin		Calcareous
	Sandy		Chert		Dolomitic
	Silty		Pyrite		Ferruginous
	Shaly		Glauconitic		Gypsiferous
	Argillaceous		Phosphatic Nodules		Anhydritic
	Limestone Beds		Fossils		No Samples
	Dolomite Beds		Siliceous		

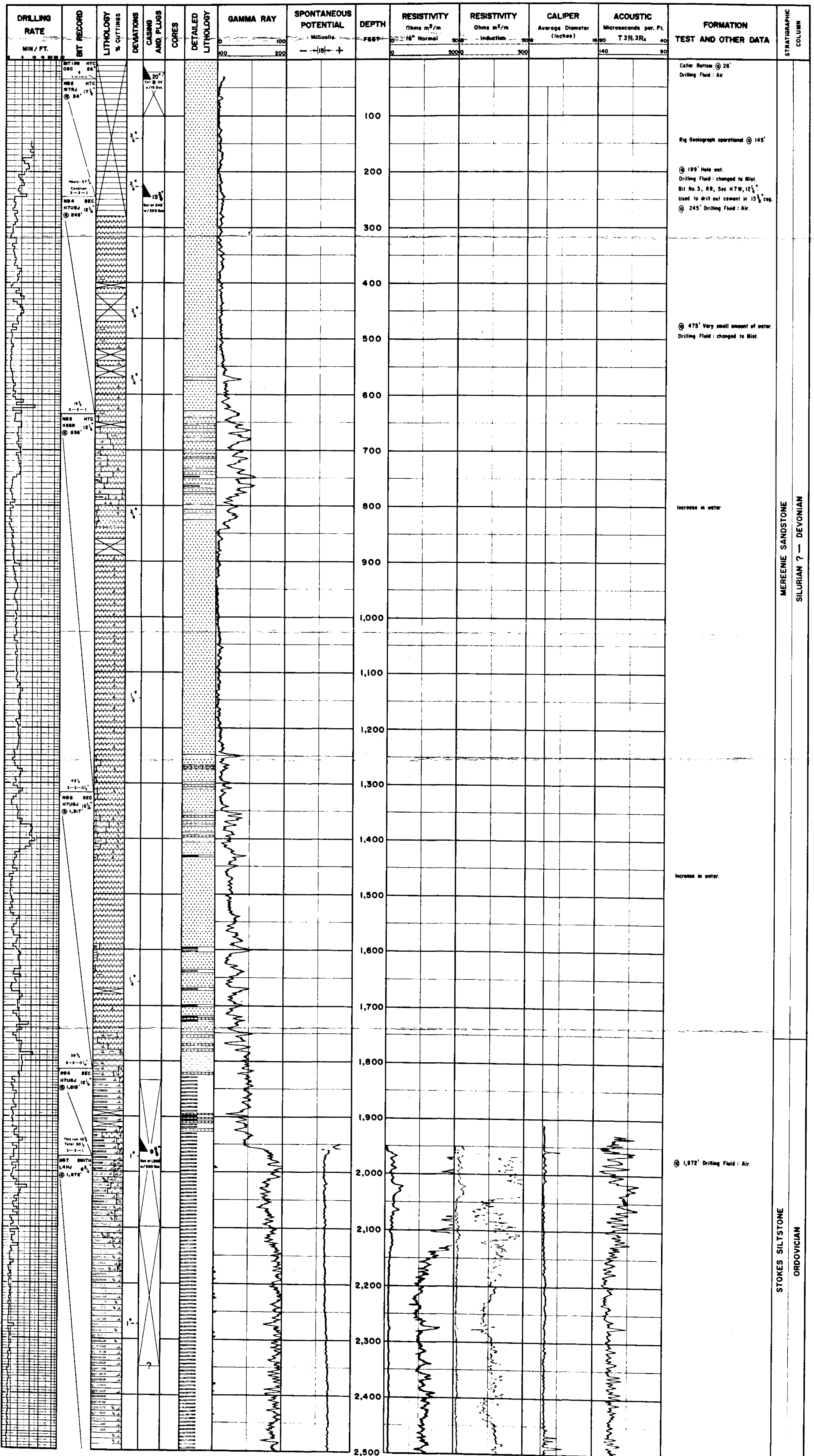
PR69/18B

# COMPOSITE WELL LOG

## NORTHWEST MEREENIE NO.1

NORTHERN TERRITORY  
GEOLOGICAL SURVEY

Sheet 2 of 3



MEREENIE SANDSTONE  
SILURIAN ? - DEVONIAN

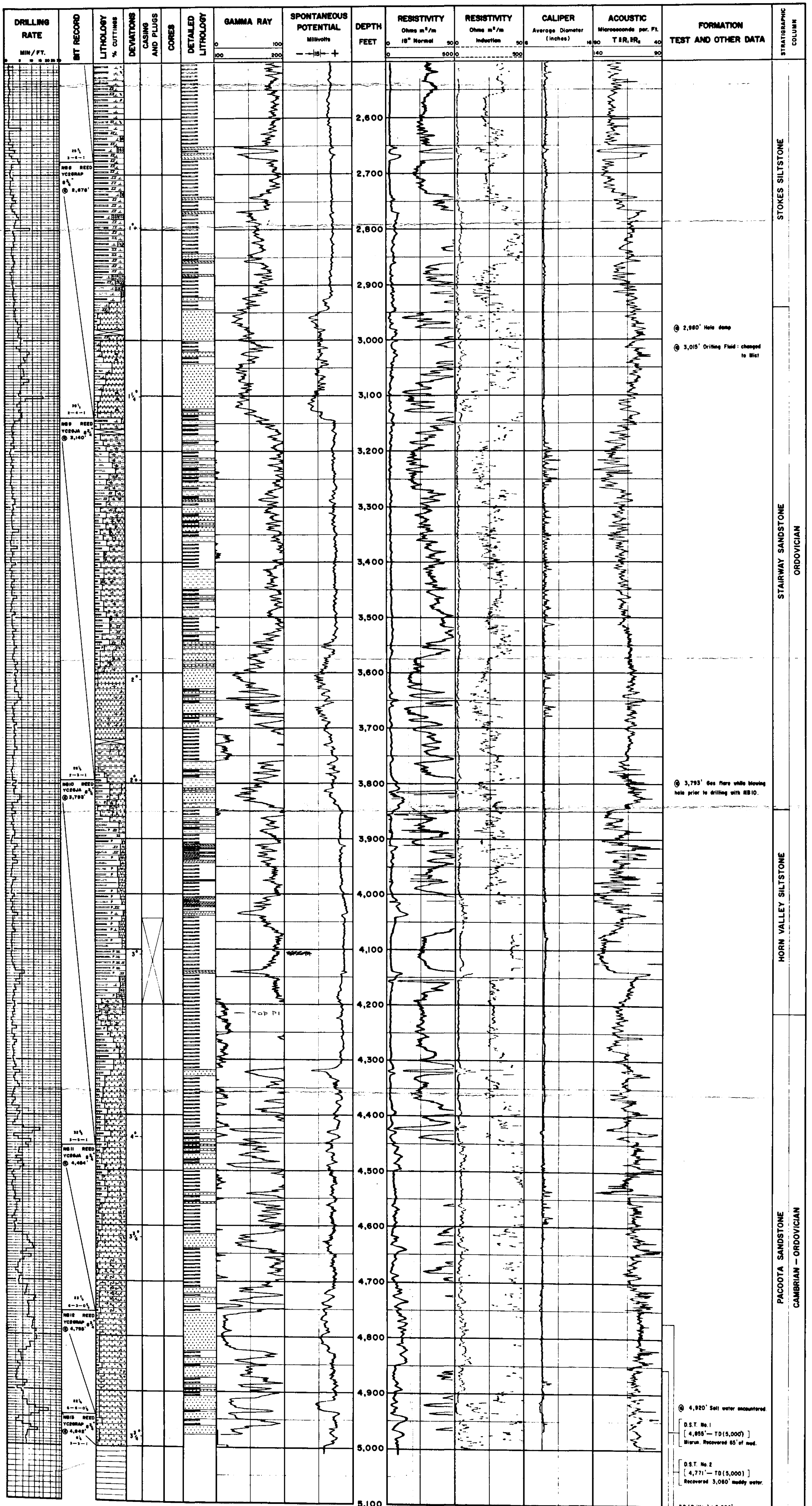
STOKES SILTSTONE  
ORDOVICIAN

PR69/183

# COMPOSITE WELL LOG

## NORTHWEST MEREENIE NO.1

NORTHERN TERRITORY  
GEOLOGICAL SURVEY  
Sheet 3 of 3



② 2,980' Hole damp  
 ③ 3,015' Drilling Fluid changed to bit  
 ④ 3,793' Gas flare while blowing hole prior to drilling with RB10.

⑤ 4,920' Salt water encountered.  
 D.S.T. No. 1  
 [ 4,855' - TD(5,000') ]  
 Mirum. Recovered 65' of mud.  
 D.S.T. No. 2  
 [ 4,771' - TD(5,000') ]  
 Recovered 3,060' muddy water.

TD (Driller) : 5,000'