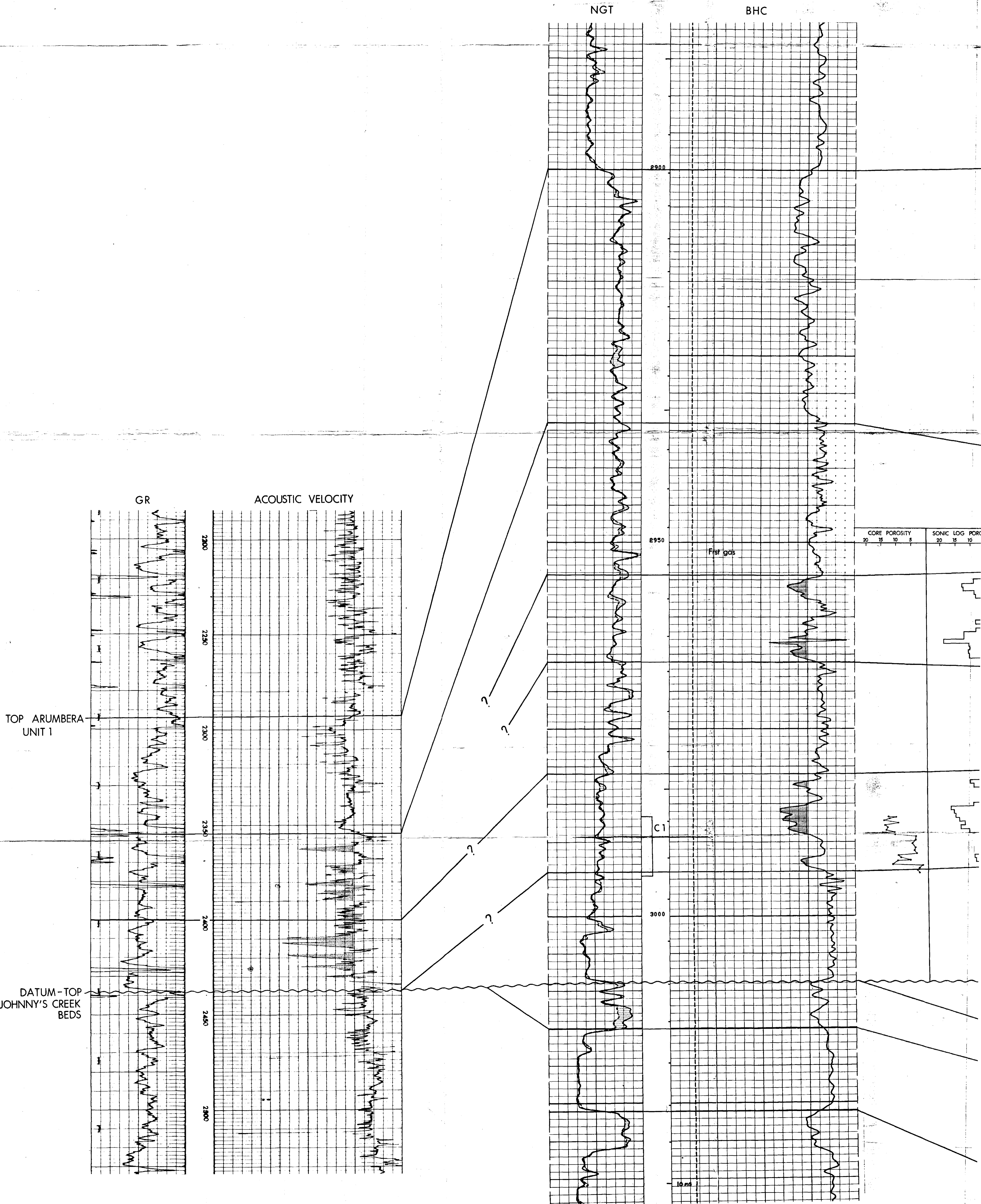
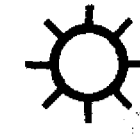
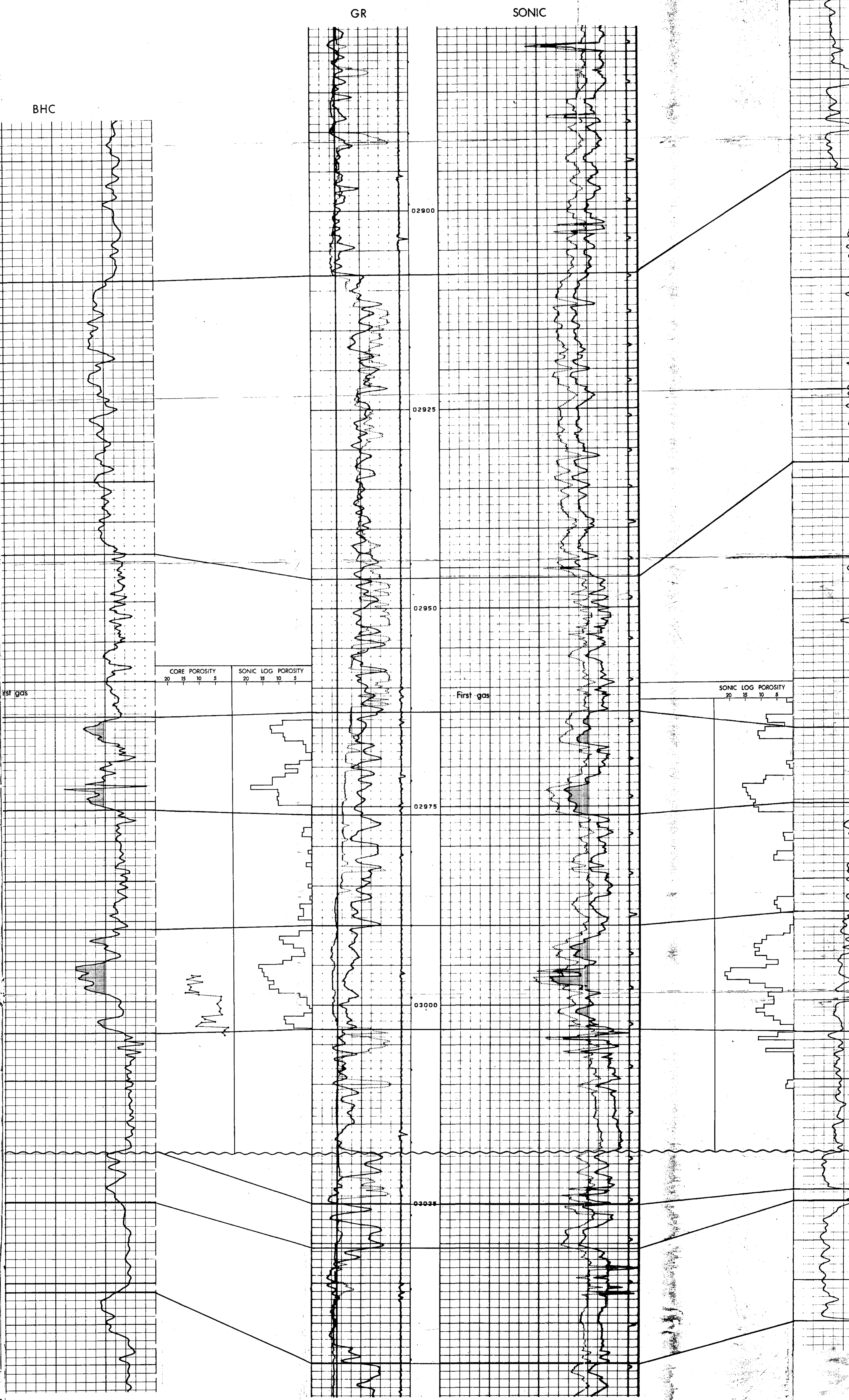
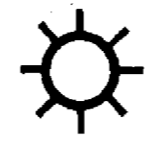


JAMES RANGE - A1



DINGO - 2





ORANGE-2



WAL

GR

02225
DST
2

02250

02275

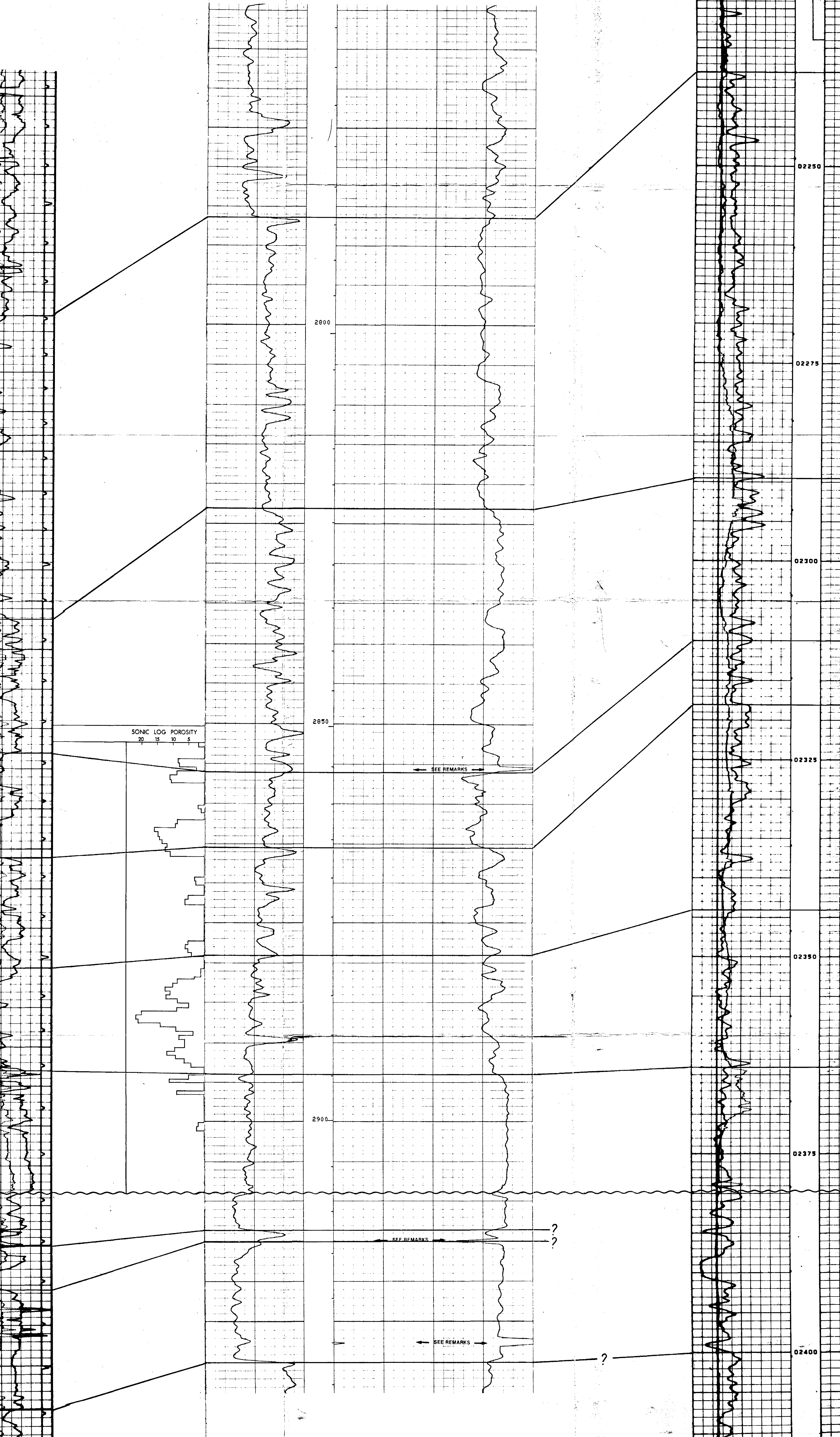
02300

02325

02350

02375

02400



SONIC LOG POROSITY
20 15 10 5

SEE REMARKS

SEE REMARKS

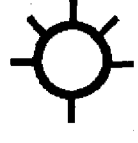
SEE REMARKS

?

?

?

WALLBY-1



OORAMINNA-1



GR

SONIC

GR

02225
DST
2

NGTS
Rec. 549 G CFW
200,000 ppm NaCl

02250

02275

02300

02325

02350

02375

02400

000

500

1000

1500

2000

2500

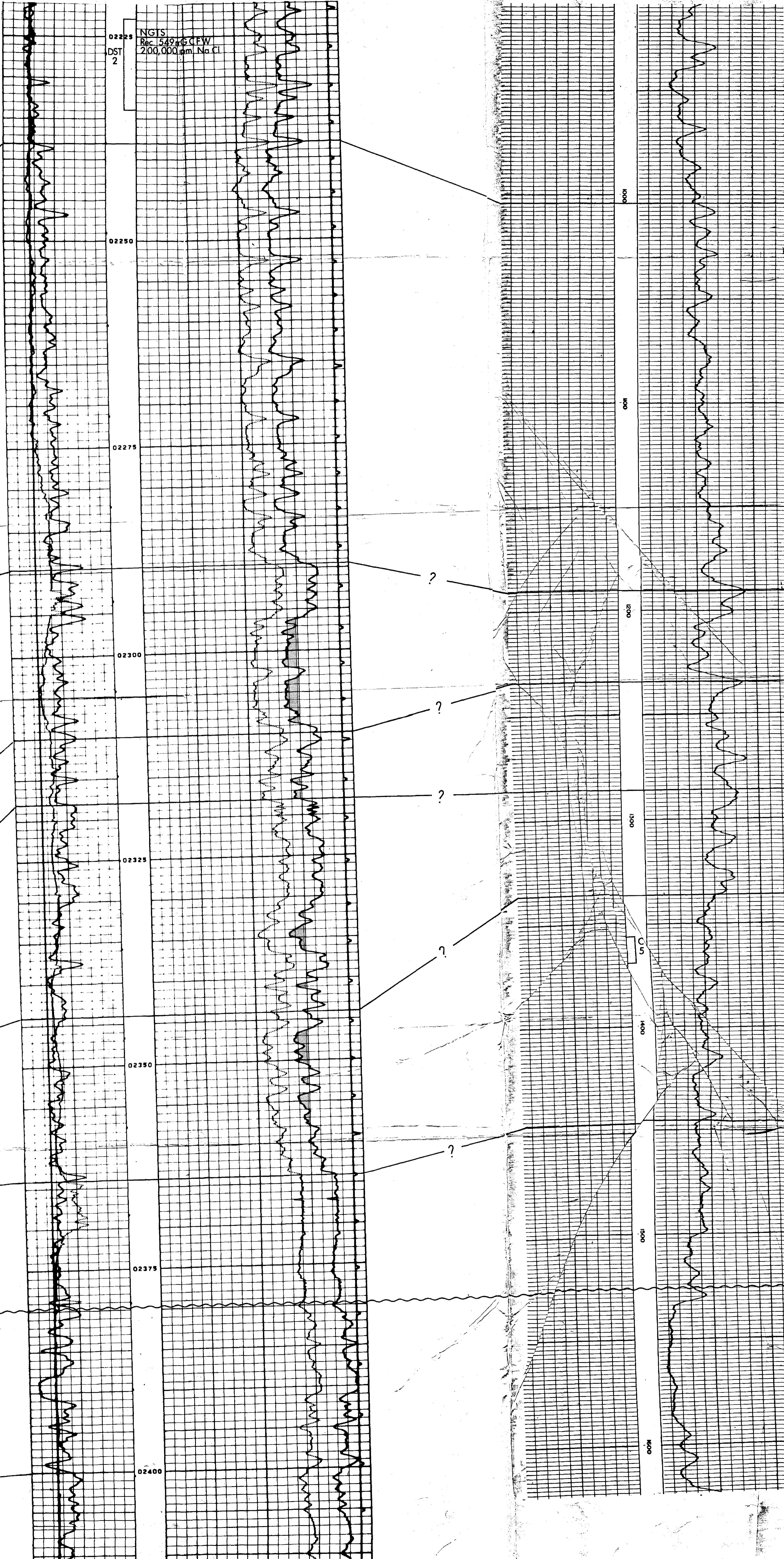
2800

U.S.

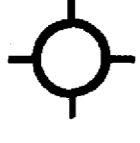
4000

1500

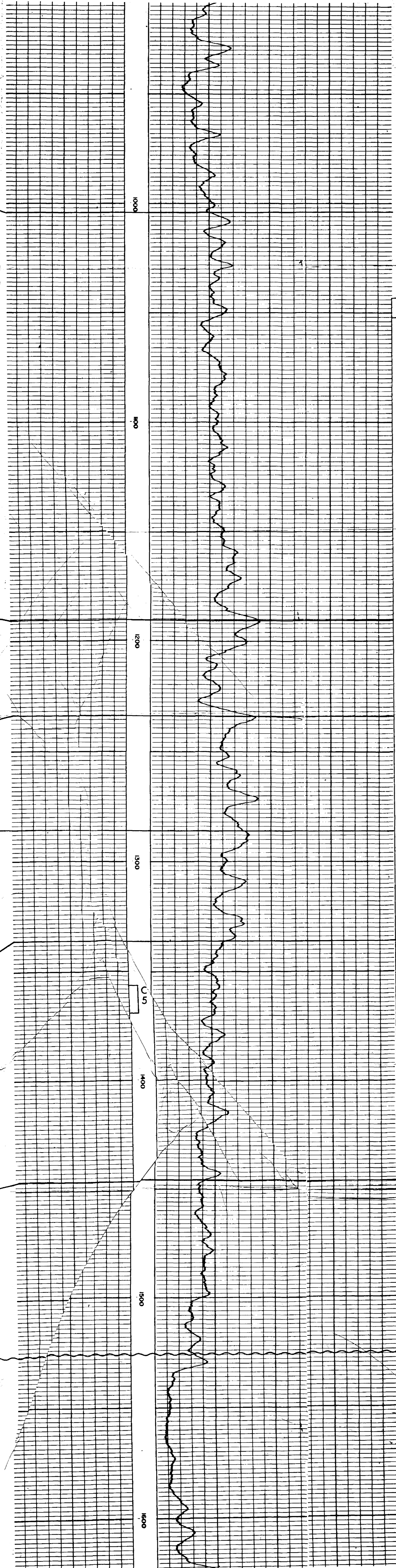
2800



OORAMINNA - 1



GR

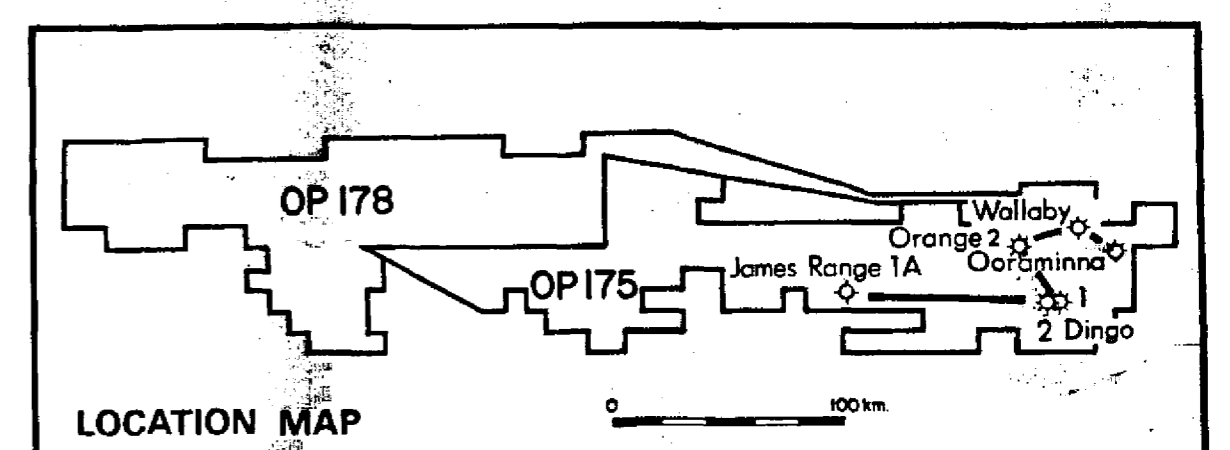
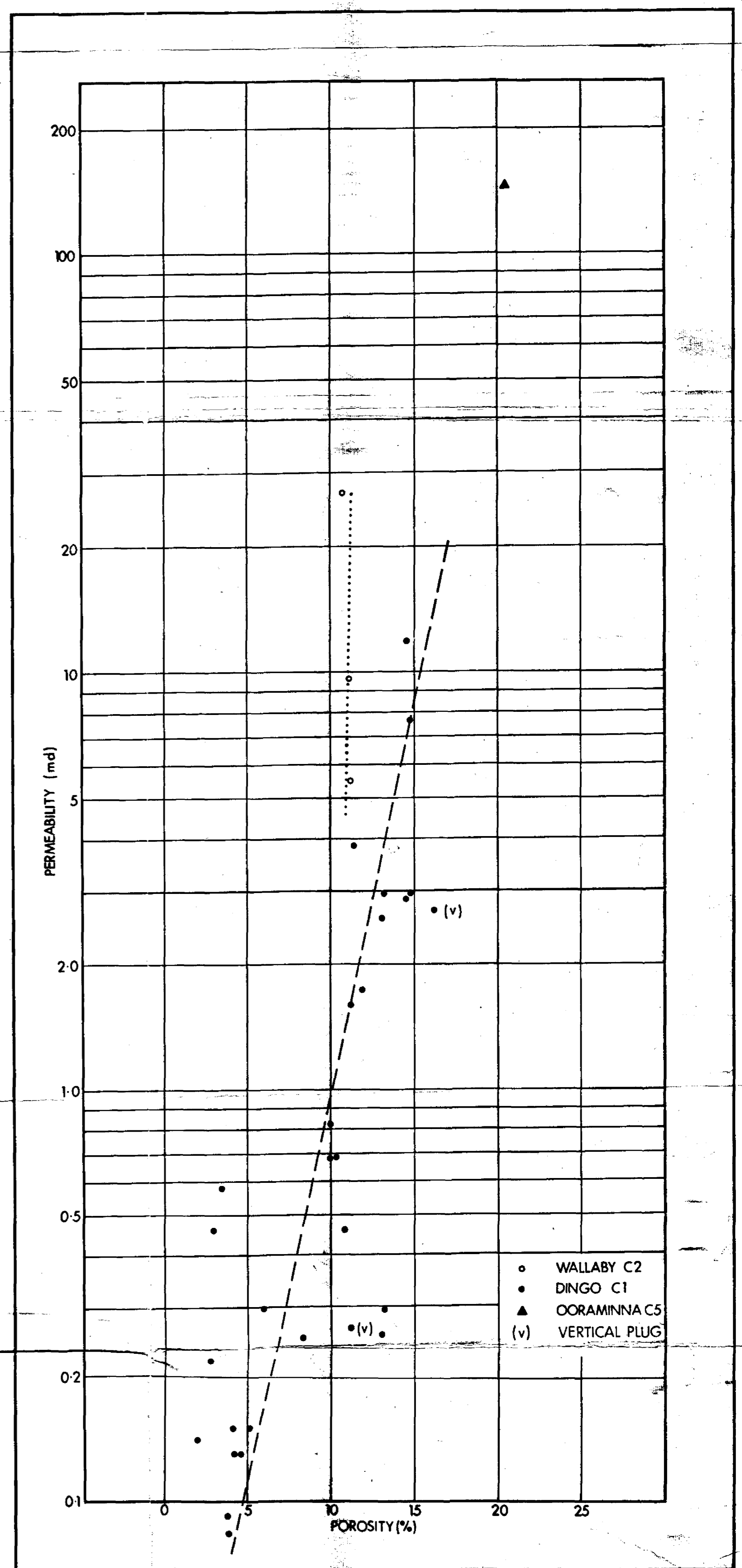
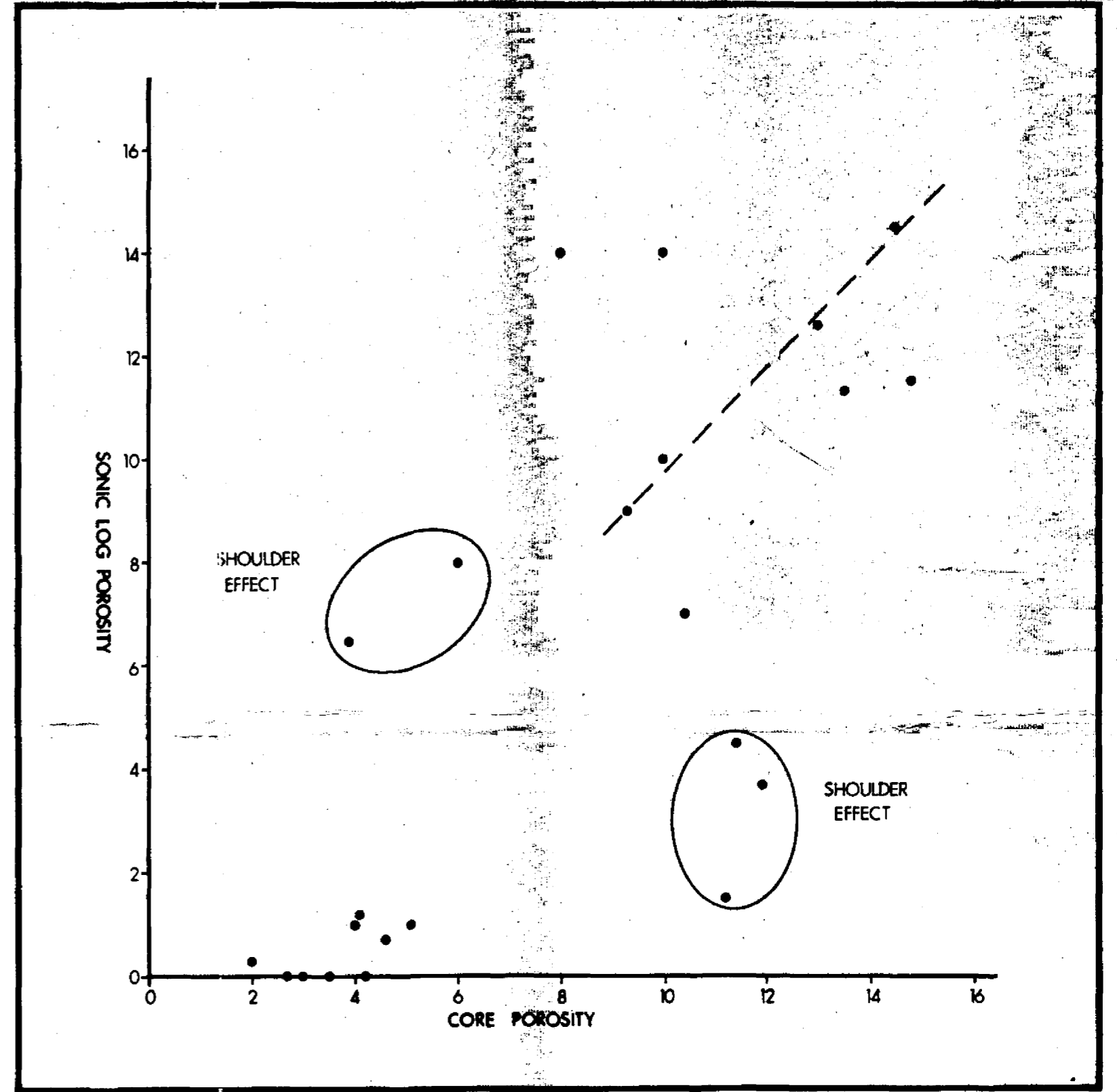


TOP ARUMBERA UNIT 1

CORE POROSITY	SCHLUMBERGER ϕ
20	20
15	15
10	10
5	5

Schlumberger log analysis.
(from well completion report)

DATUM - TOP JULIE FORMATION



PR85/047 B

PANCONTINENTAL PETROLEUM LIMITED

GAMMA RAY SONIC LOG - CORRELATION
ARUMBERA SANDSTONE UNIT 1
SHOWING SONIC LOG POROSITY,
CORE AND LOG DERIVED POROSITY
AMADEUS BASIN - OP175

AUTHOR: J.D.G. G.R.M. DATE: JULY 1984 PLAN NO: 3/502
DRAWN: B.M., N.A., D.P. SCALE: ENCLOSURE: 4