

**LEGEND**

- |                       |                     |                           |
|-----------------------|---------------------|---------------------------|
| QUATERNARY            | UPPER PALAEOZOIC    | Fault                     |
| TERTIARY - Sediments  | ? SILURIAN          | Anticline, showing plunge |
| TERTIARY - Grey billy | ORDOVICIAN-CAMBRIAN | Syncline                  |
| CRETACEOUS            | UPPER PROTEROZOIC   |                           |
| ? JURASSIC            | Undifferentiated    |                           |

**REGIONAL GEOLOGICAL MAP  
ALICE SPRINGS AREA**



Geology after: T. Guinlan, BMR

PR66/25B

# COMPOSITE WELL LOG

Sheet 1 of 2

COMPANY: EXOIL (N.T.) PTY. LTD., UNITED CANSO OIL & GAS LTD., AUSTRAM OIL PTY. LTD., FARMOUT DRILLERS N. L.  
WELL NUMBER: MEREENIE No. 1

PETROLEUM TENEMENT: O.P. 56      STATE: NORTHERN TERRITORY      4-MILE SHEET MT. LIEBIG      BASIN: AMADEUS      WELL STATUS: TEMPORARILY ABANDONED GAS WELL

LOCATION — Lat. 23° 59' 10" S,  
Long 131° 30' 10" E  
ELEVATION — K.B. 2607' A.S.L.  
Ground 2596' ±

Date Spudded: 2 Dec, 1964  
Date Drilling Stopped: 21 Feb, 1964  
Date Rig off: 2 Apr, 1964

Driller: 3983'  
F Log: —

Hole Size	In	From	To
17 1/2"	17 1/2	Surface	207'
12 1/4"	12 1/4	817'	817'
8 1/2"	8 1/2	817'	3983'

Casing	In	Wt	Gr	Depth	Cmt	Cmt'd to
13 1/2"	48	H-40		207'	100	Surface
9 5/8"	36	J-55		817'	200	Surface

Cement Plugs	From	To	Sacks
	950'	2628'	460

### ELECTRIC LOG CALIPER MICROLOG DATA

Run Number	1	2
Date	1. 1. 64	1. 1. 64
Fluoresce Logged	1585'	1587'
Logged From	2406'	2404'
Logged To	817'	817'
Total Depth - Electric Log	2407'	2407'
Total Depth - Driller	2406'	2406'
Casing Shoe - Electric Log	817'	817'
Casing Shoe - Driller	817'	817'
Bit Size	8 1/2"	4 1/2"
Mud Kind	Get	Get
Water Loss ccs/50m	180	180
Weight lbs/cu ft	9.9	9.9
Viscosity (Marsh) Sec	45	45
pH	11	11
Resistivity m m <sup>2</sup> /m	1.8 @ 817'	1.8 @ 817'
8 Temp	1.6 @ 94°F	1.6 @ 94°F
Max. Recorded Temp	10.7°F	10.4°F
Electrode Spacing	16"	17.4"
Symmetrical	64"	2"
Recorded by	Husten	Hasten

CASING RECORD				OPEN HOLE RECORD			
Run No	Size - In.	Wt - Lbs	Interval - Ft	Bit Size - In.	Interval - Ft	Surface	207'
1	13 1/2"	48	Surface	207'	17 1/2"	Surface	207'
2	9 5/8"	36	Surface	817'	12 1/4"	207'	817'

### WELL SYMBOLS

- Well Head Fittings: Welded Steel Plate
- Drilled by: Oil Drilling and Exploration Ltd.
- Logged by: Schlumberger
- Cemented by: Oil Drilling and Exploration Ltd.
- Mud Logging by: Core Lab
- Drilling Methods: Rotary, Air & Mud
- Lithology by: R. L. Pemberton
- Gas show slight: ○
- Oil show slight: ●
- Fluorescence: ◇
- Circulation loss complete and s.g. mud: x
- Flow into well and s.g. mud: →
- Core interval, number and recovery: [Symbol]
- Formation test, interval and number: [Symbol]
- Plugged interval: [Symbol]
- Casing shoe: [Symbol]

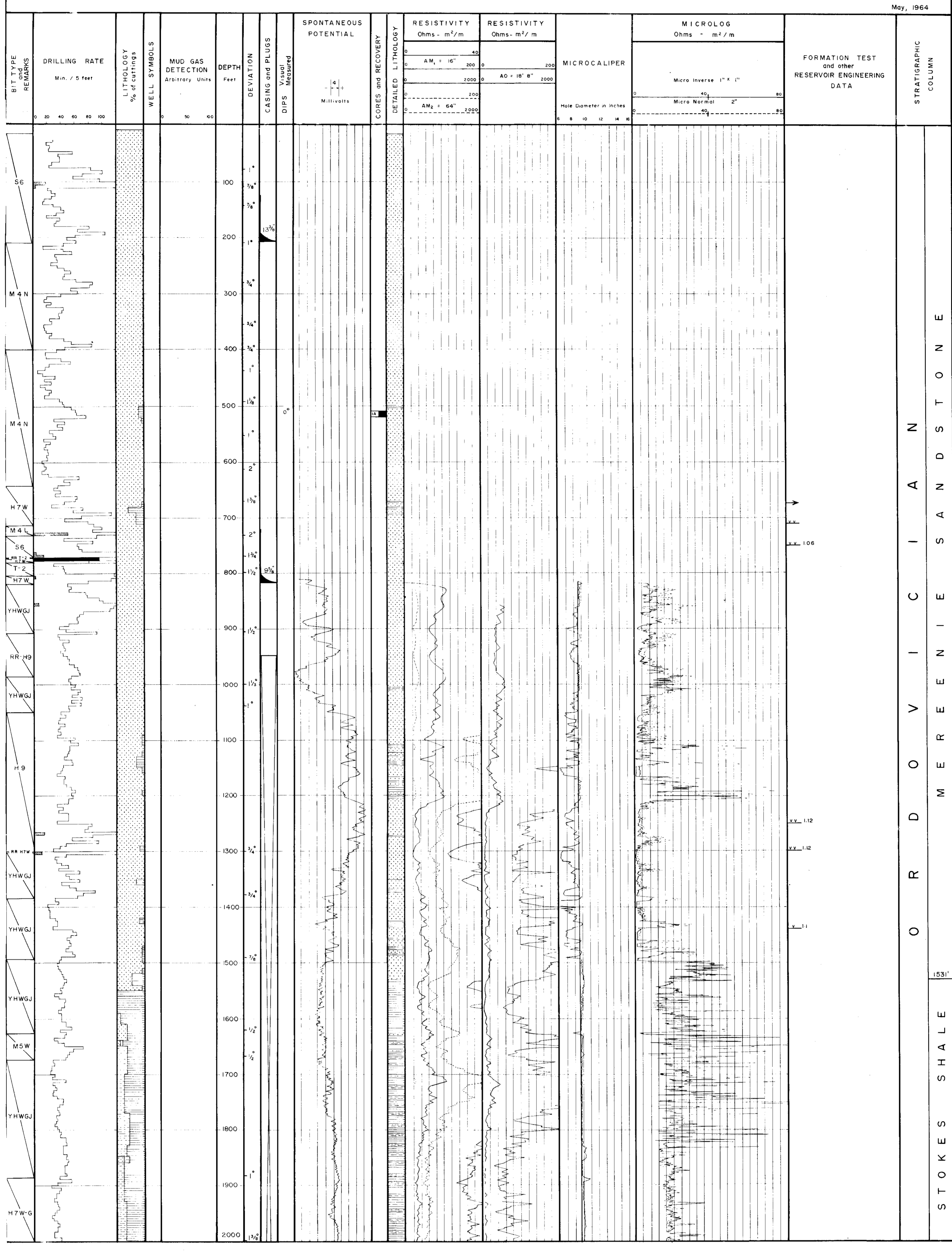
### LITHOLOGIC REFERENCE

- Sandstone: [Symbol]
- Siltstone: [Symbol]
- Shale: [Symbol]
- Limestone: [Symbol]
- Dolomite: [Symbol]
- Macro Fossils: [Symbol]

### FOSSILS

- Macro Fossils: [Symbol]

Drafting by GEODRAFTING SERVICES      May, 1964



# COMPOSITE WELL LOG

## MEREENIE No. 1

2000 - 3983'  
Sheet 2 of 2

