

CROCKER

DATA PROCESSING

WALTON - 2

Composite Logs

Company	PACIFIC OIL AND GAS
Well Name	WALTON - 2
Field	EP 24-NT
Country	AUSTRALIA
State	N.T.
Latitude	015 54' 31.800" S DMS
Longitude	133 38' 35.300" E DMS
Perm. Datum	MSL
Elevation Perm. Datum	0.00 M
Elevation KB (wrt EPD)	194.50 M
Elevation DF (wrt EPD)	194.50 M
Elevation GL (wrt EPD)	192.00 M
Elev. Log Zero (wrt EPD)	194.50 M
Log measured from	KB
Drill measured from	KB
Services	Resistivity-SP
Other Services Ln 1	Density-GR-CALI
Other Services Ln 2	Deviation
Service company	CENTURY
Basin	EP 24-NT
Date Plotted	Thursday, 26 June 2008
Time Plotted	12:05:27 PM

 **PETROLOG**
ADVANCED LOG ANALYSIS SOFTWARE

PETROLOG SOFTWARE Version 10.5 (Beta)

 **PETROLOG**
ADVANCED LOG ANALYSIS SOFTWARE

Run Information

Run number	1			
Log date	21 Sept 1989			
Depth-Driller	1014.00 M			
Depth-Logger	1016.20 M			
Bottom log interval	1017.50 M			
Top log interval	145.00 M			
Bit Size	11.050 INCH			
Fluid Density	1.100 G/CC			
RM - G/G	0.145 G/CC			

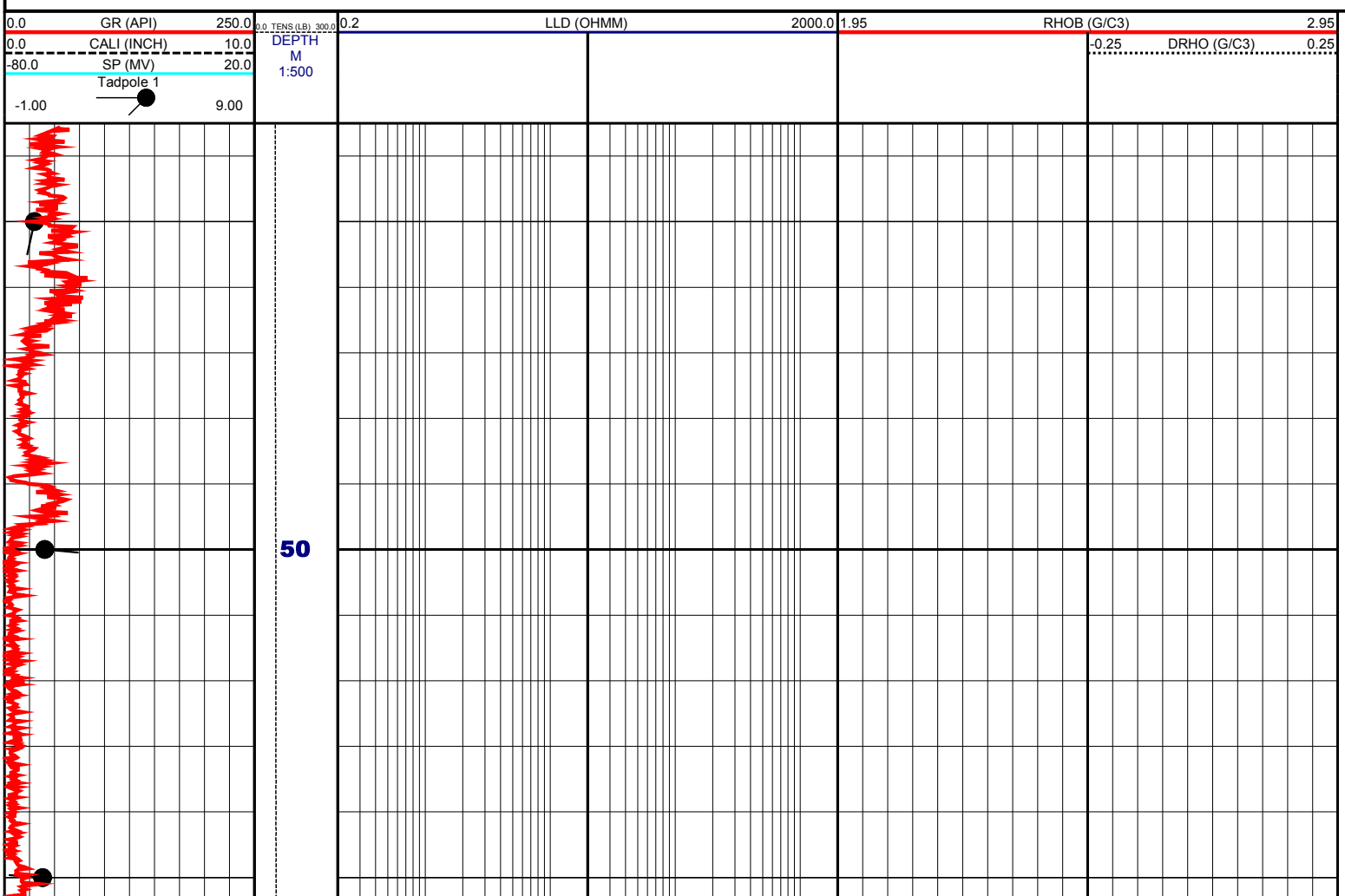
RM @ Surface	0.145 OHMM			
Mud temp @ Surface	37.00 DEGC			
RMF @ Surface	0.155 OHMM			
MF temp @ Surface	22.00 DEGC			
RMC @ Surface	0.180 OHMM			
MC temp @ Surface	22.00 DEGC			
Mud Filtrate Sample Source	PRESS			
Mud Cake Sample Source	PRESS			
Time circ. stopped	1700			
Bottom hole temp	37.00 DEGC			
Logging unit No	7741			
Logging unit Loc	ADELAIDE			
Recorded by	RICHTSTEIGER			

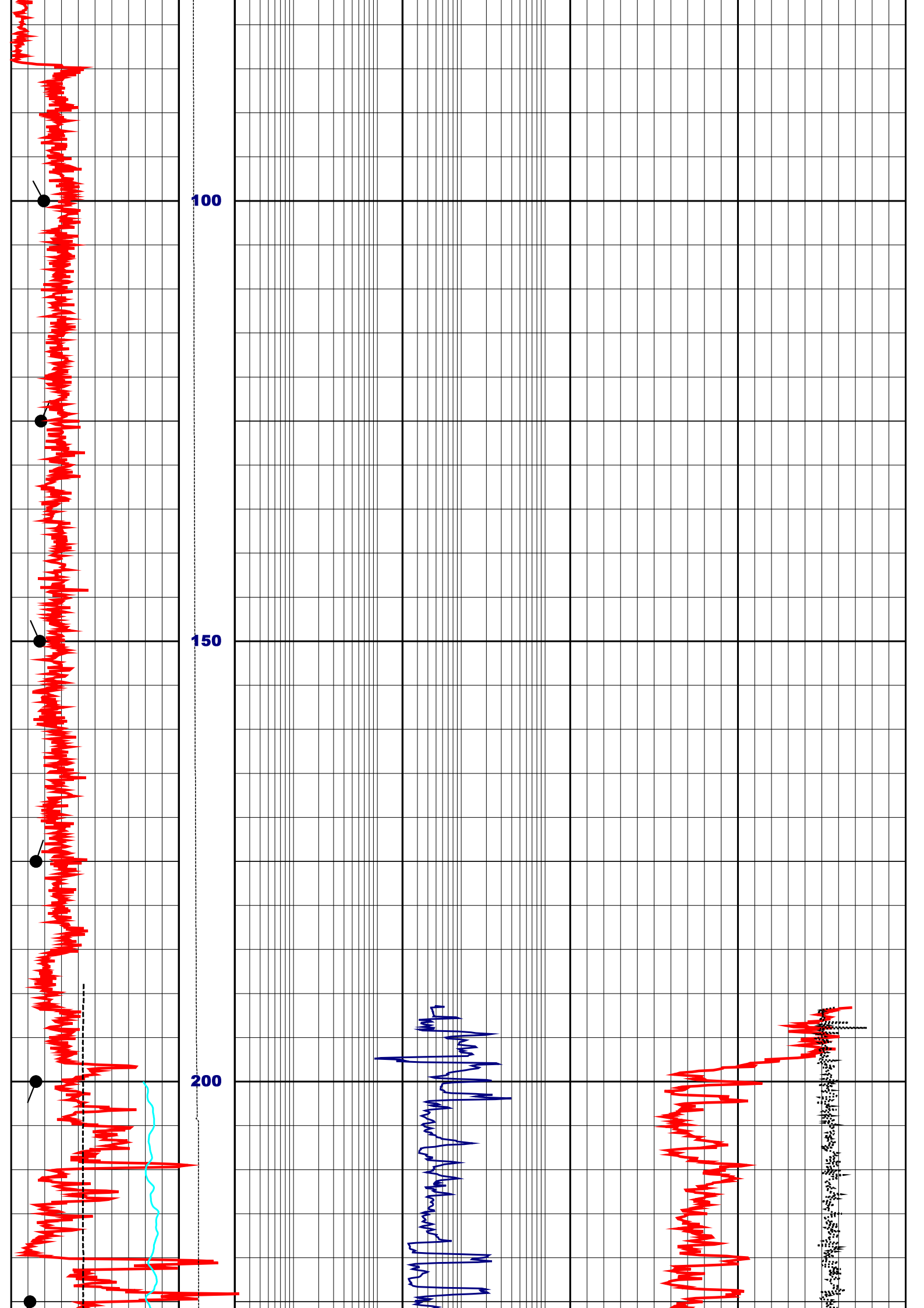
Neutron porosity determined from near detector due to tool failure.
 Neutron porosity in Sandstone units.
 Logs loaded, edited and merged from LIS files by CDP in May 2008
 Well Header information manually typed from scanned field print.

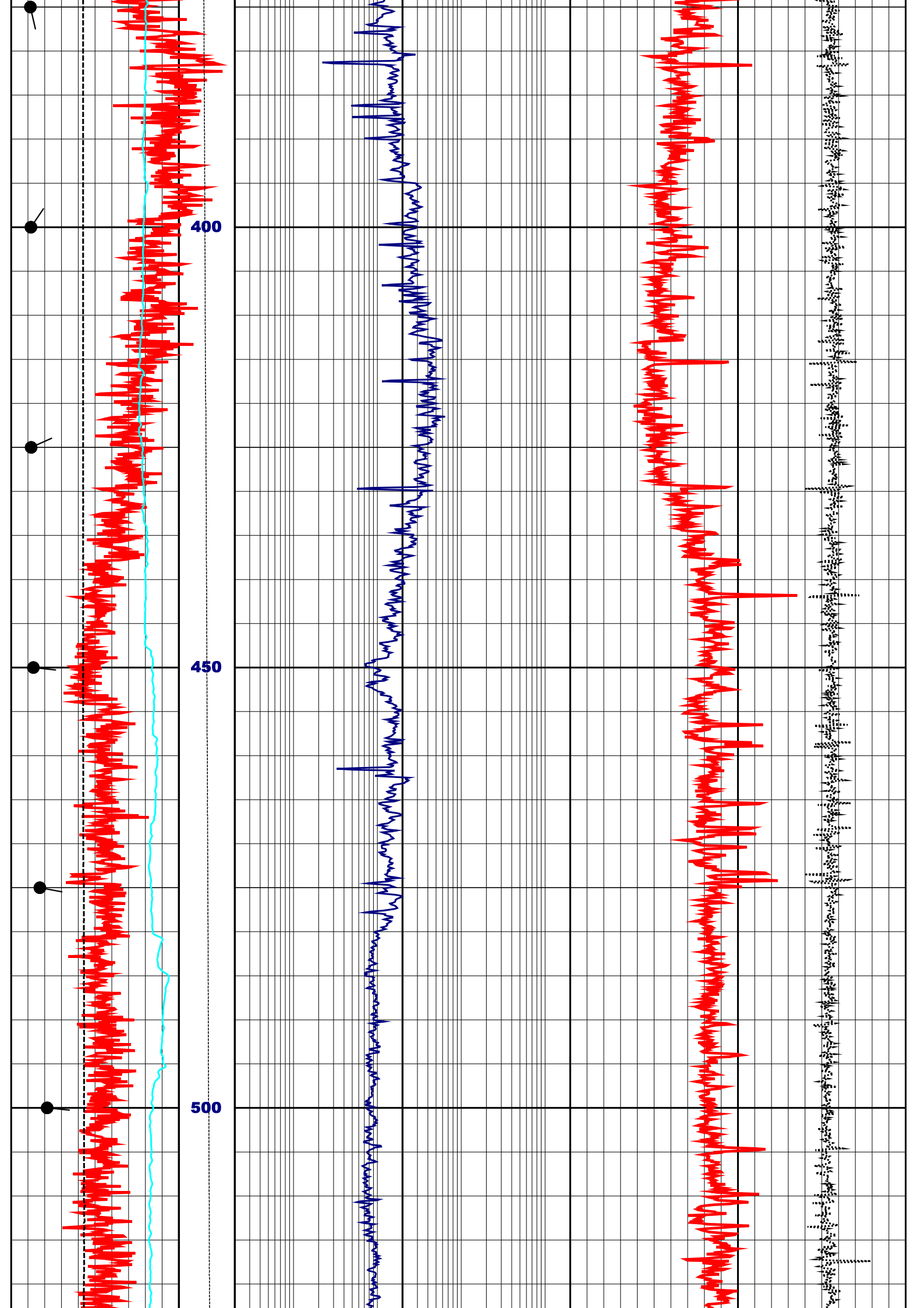
Since well log interpretations are opinions based upon inferences from well logs, we cannot and do not guarantee the correctness or accuracy of any interpretation. Therefore we shall not be liable or responsible for any loss, damage, cost or expense incurred or sustained by anyone resulting from any interpretation.

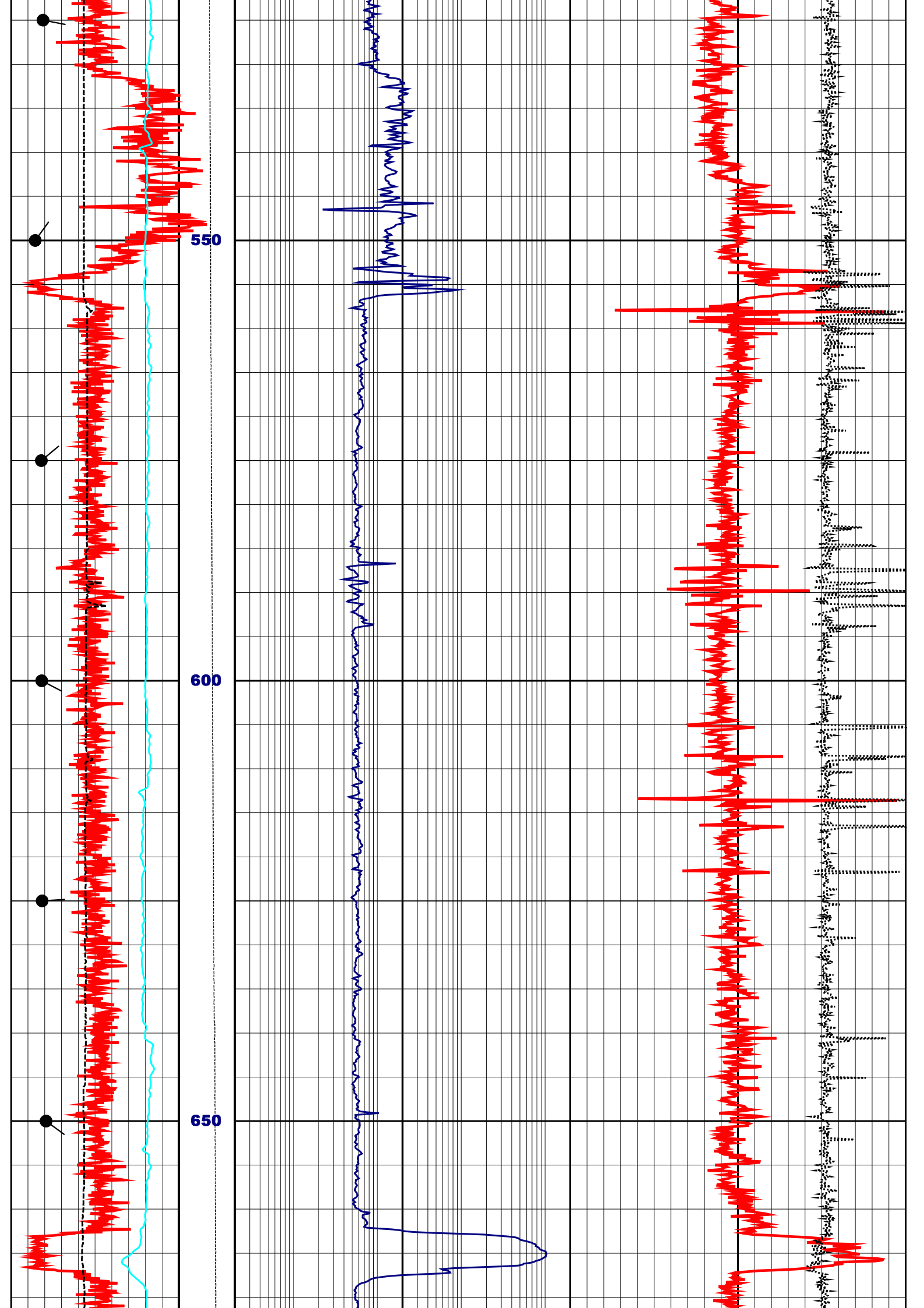
Log Description

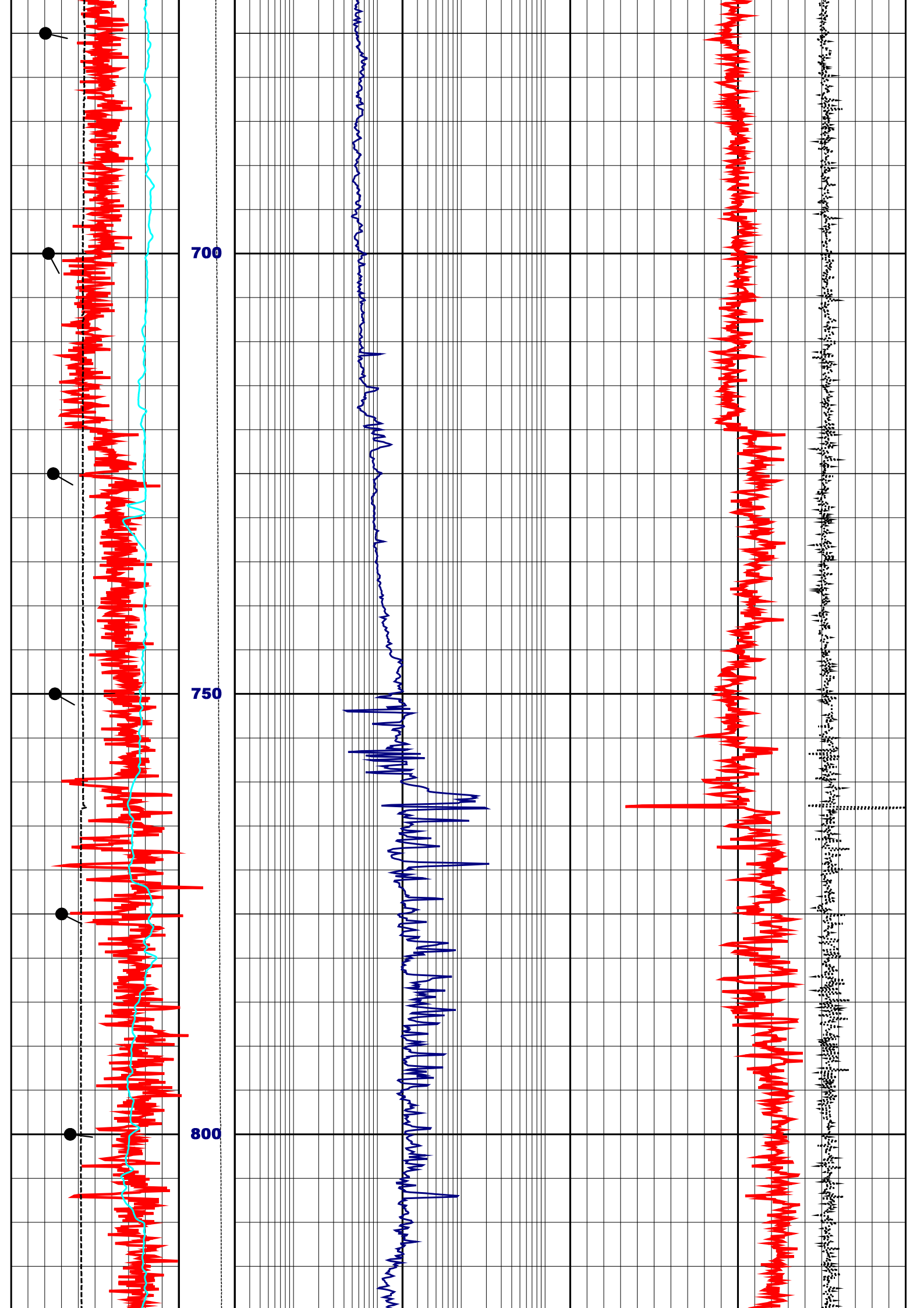
- GR Gamma Ray
- CALI Caliper
- SP Spontaneous Potential Log
- LLD Laterolog Deep Resistivity
- RHOB Compensated Formation Density
- DRHO Density Correction
- TENS Cable tension at surface

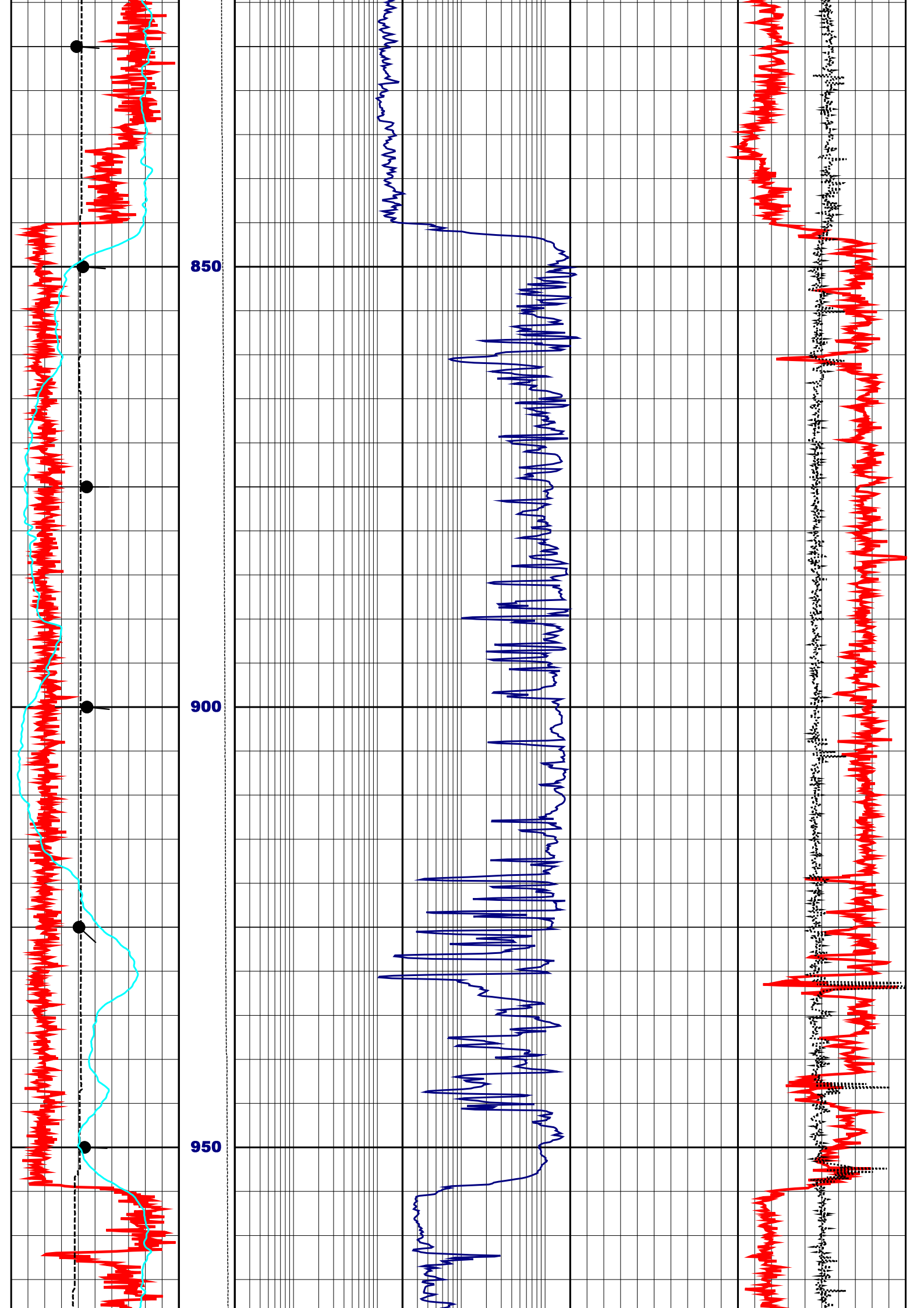


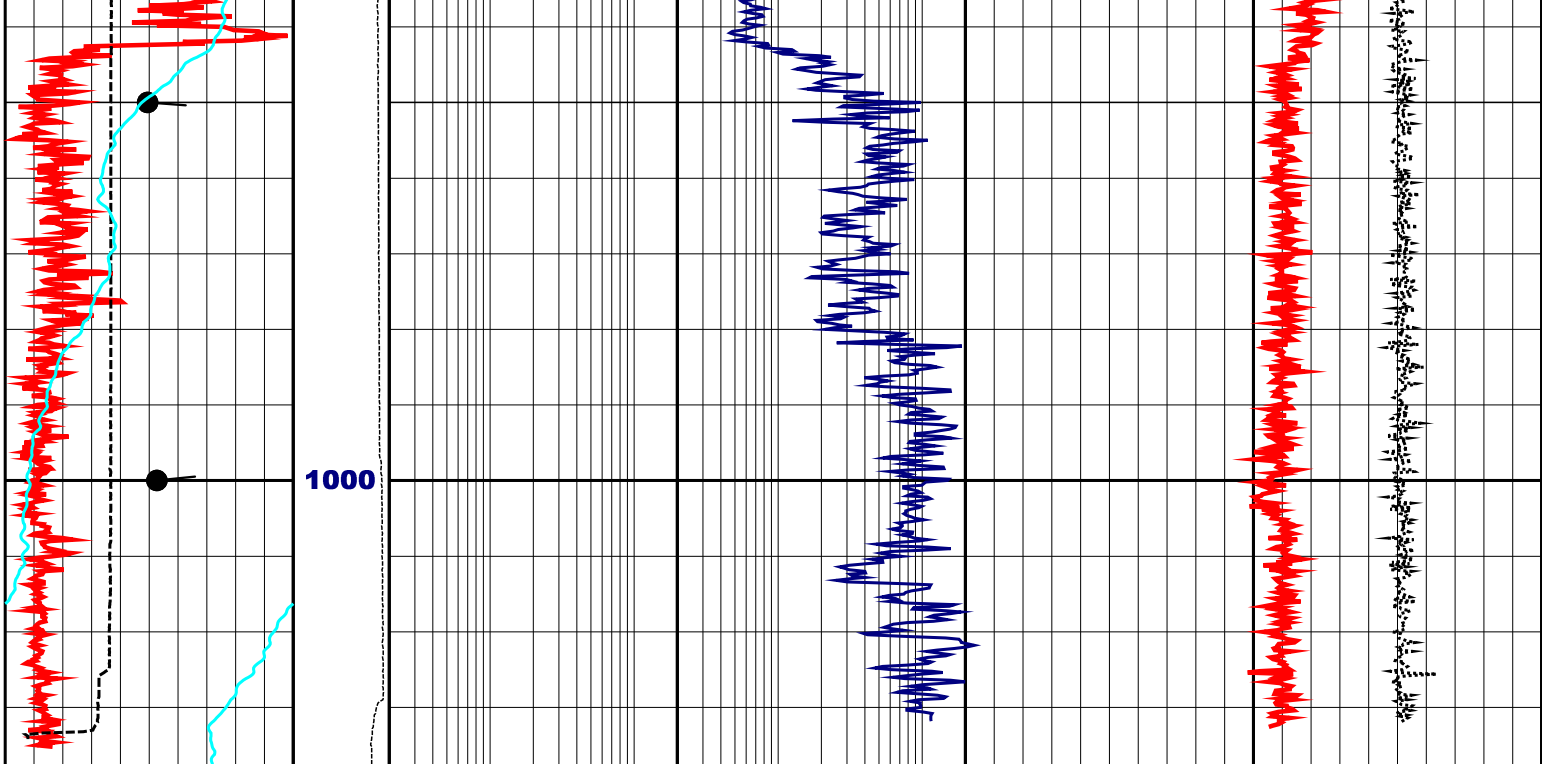












0.0	GR (API)	250.0	0.0 TENS (LB)	300.0	0.2	LLD (OHMM)	2000.0	1.95	RHOB (G/C3)	2.95	
0.0	CALI (INCH)	10.0	DEPTH						-0.25	DRHO (G/C3)	0.25
-80.0	SP (MV)	20.0	M								
-1.00	Tadpole 1	9.00	1:500								