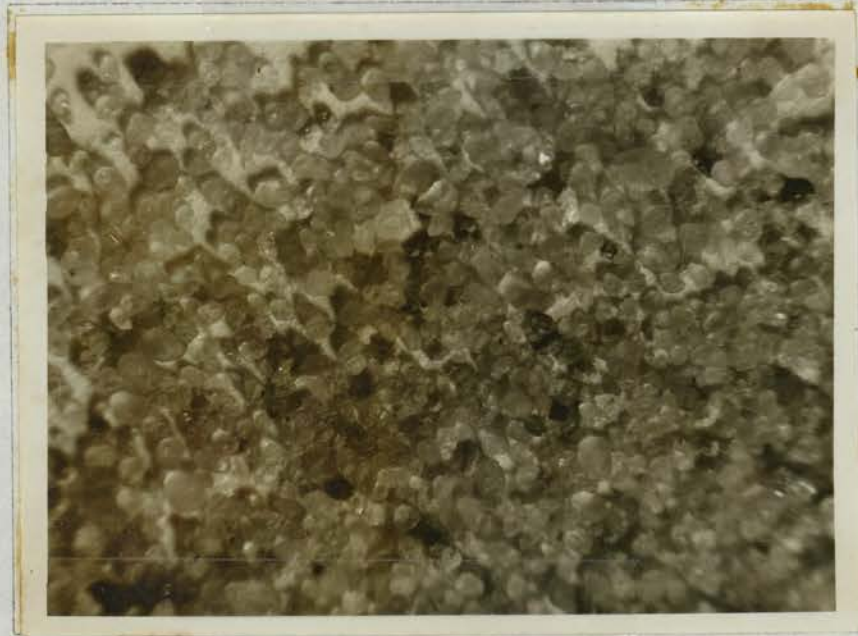


Plate 1



EXOIL ET AL

JOHNNY'S CREEK NO. 1 WELL

Cutting Sample Showing Nature of Unconsolidated
Caving Sand at 750 feet

S U M M A R Y

The Johnny's Creek No. 1 well located approximately 170 miles west-south-west of Alice Springs was drilled to a total depth of 877 feet.

The well spudded in Ordovician Pacoota Sandstone and bottomed in Cambrian Goyder Formation. The well was plugged and abandoned as a dry hole at 877 feet due to extreme caving hole conditions.

Sixteen days were spent attempting to overcome hole conditions. A pilot hole was drilled from 739 feet to 877 feet. As no appreciable progress was being made after running .43 cement plugs totalling 139 tons, the decision was made to terminate the hole and drill the eastern tail of the Johnny's Creek Anticline.