

# MAGELLAN PETROLEUM (N.T.) PTY. LTD.

## COMPOSITE WELL LOG

PETROLEUM TENEMENT: OIL PERMIT NO. 43 WELL: PALM VALLEY NO. 2

STATE: NORTHERN TERRITORY 4 MILE SHEET: HENBURY BASIN: AMADEUS

WELL STATUS: SHUT-IN GAS WELL

LOCATION: 24° 00' 03" SOUTH  
132° 38' 47" EAST  
ELEVATION: KB 3,007'  
GRD 2,990'  
DATE SPUNDED: 21-12-69  
DATE DRILLING STOPPED: 2-2-70  
DATE RIG RELEASED: 5-2-70  
TOTAL DEPTH: 6,559' (Driller)

HOLE SIZE		
Inches	From (KB=0)	To
17 1/2	31'	431'
12 1/2	431'	4,225'
8 1/2	4,225'	6,057'
6 1/2	6,057'	6,559'

CASING				
Inches	Wt. (lbs) Gr	Depth (ft.)	Cmt. (sx)	Cmt 'd To
20 Cond.	—	31	10	Surface
13 1/2	48 H40 54.5 J55	431	317	Surface
9 1/2	40 J55 47 P110 40 N80 43.5 N80 36 J55	4,225	225	3,508'
7	23 J55	6,056	158	4,794'

Perforations: None  
Well Head Fittings: Cameron Xmas Tree Assembly  
Drilled by: Oil Drilling and Exploration (N.T.) Pty. Ltd.  
Logged by: Welx  
Drilling Method: Rotary  
Cement by: Halliburton  
Lithology: R. A. Magee  
J. Morris

ELECTRIC LOG DATA			
Run Number	1	2	
Date	15-1-70	23-1-70	
Footage Logged	3,803'	1,825'	
Logged from	4,205'	6,054'	
Logged to	400'	4,225'	
Total Depth—Electric Log	4,208'	6,059'	
Total Depth—Driller	4,225'	6,057'	
Casing Shoe—Electric Log	427'	4,225'	
Casing Shoe—Driller	425'	4,225'	
Bit Size	12 1/2"	8 1/2"	
Mud Type	Formation water (fresh)	Gel-water base mud	
—Treatment	Contaminants: Adhesion, Colloidal Solids, Sodium Dichromate	Cl-, Borates, seaweeds & Aluminium Silicates	
—Water loss cc/30m	—	17-6	
—Weight (lb/gal)	8.3	10.2	
—Viscosity (cent) sec	26	50	
—pH @ Measured Temperature	8.3	6.0	
Rd @ Measured Temperature	10.2 @ 83°F.	1.91 @ 83°F.	
Raf @ Measured Temperature	10.2 @ 83°F.	1.32 @ 83°F.	
Rac @ Measured Temperature	2.0 @ 83°F.	2.20 @ 83°F.	
Rd @ 100'	8.7 @ 138°F.	1.18 @ 167°F.	
Raf @ 100'	13.7 @ 4,150'	162°F @ 6,000'	
Recorded by	L. Patterson	L. Patterson	

RADIOMETRIC LOG DATA			
Type of Log	Gamma	Gamma	Gamma
Run Number	1	2	
Date	15-1-70	23-1-70	
Total Depth—Driller	4,225'	6,057'	
Top of Logged Interval	425'	4,225'	
Bottom of Logged Interval	4,185'	6,027'	
Type of Fluid in Hole	Formation water (fresh)	Gel-water base mud.	
Fluid Level	Approx. 1,740'	Surface	
Max. recorded temp.	138°F @ 4,150'	167°F @ 6,000'	
Neutron source, strength, type	—	—	
Source spacing	—	—	
Length of measuring device	—	—	
O.D. of instrument	3 1/2"	3 1/2"	
Time Counted—sec.	2	2	
Logging speed—ft./min.	25	25	
Statistical Variation in.	—	—	
Stability reference	186	186	
Recorded by	L. Patterson	L. Patterson	

ADDITIONAL LOGS RUN  
ACOUSTIC VELOCITY: 6,054'—1,760'  
CALIPER: 6,020'—427'

WELL SYMBOLS

- Gas show, slight
- Gas show, strong
- Oil show, slight
- Oil show, strong
- Oil and gas show
- Fluorescence
- Circulation loss partial and mud weight (lb/gal)
- Circulation loss complete and mud weight (lb/gal)
- ▲ Casing shoe
- BB Run-in bit
- BB Blowout
- Core, interval, N- and recovery
- ▷ Sidewall core
- ▷ Perforated interval
- Formation test interval @ No. 1
- Plugged interval
- ⊗ Reamer
- CB Core Bit

ROCK TYPES

- Sandstone
- Siltstone
- Shale
- Limestone
- Dolomite

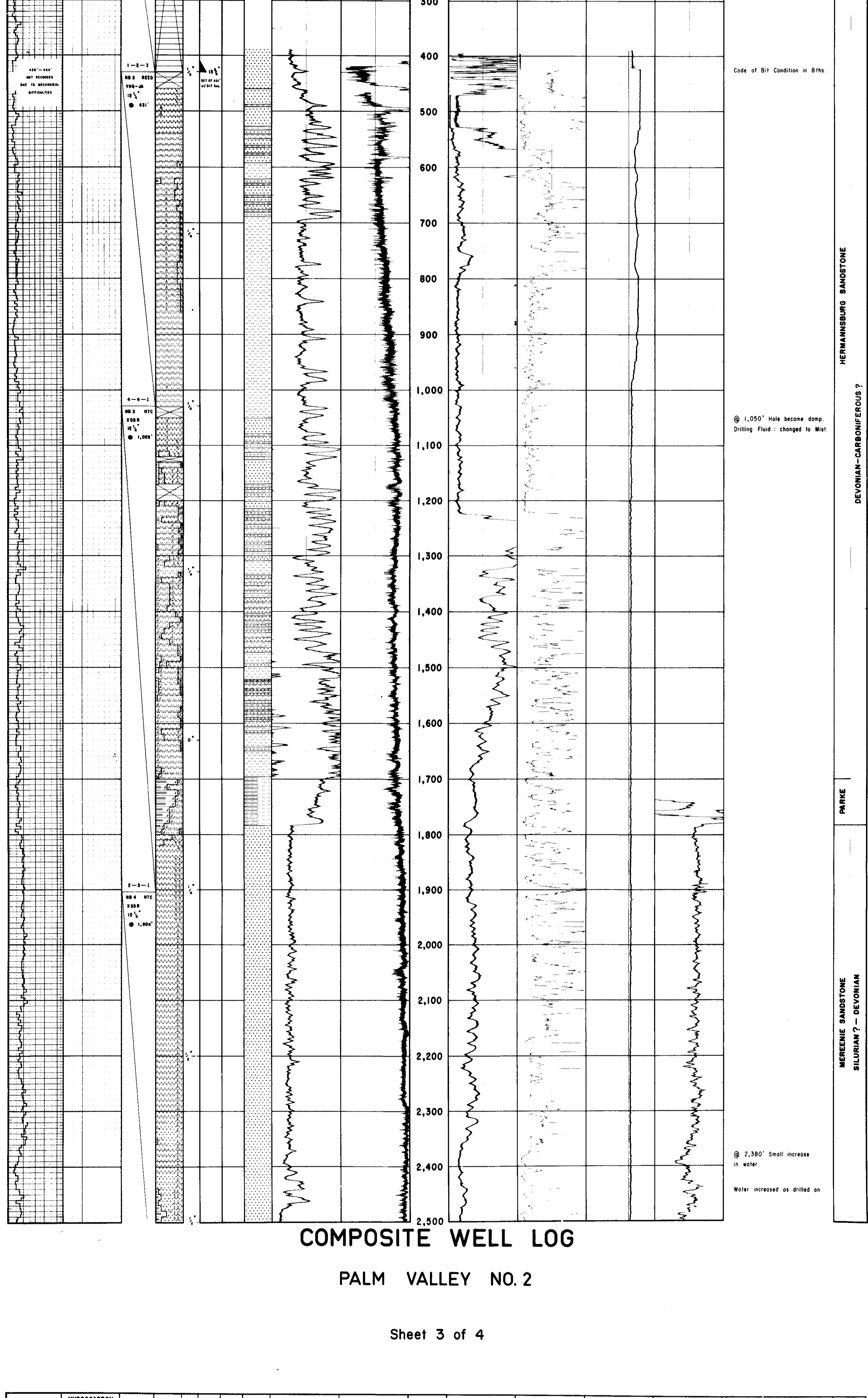
LITHOLOGIC REFERENCE

- Silty
- Silty
- Shaly
- Keolin
- Pyrite
- Fossils
- Siliceous
- Calcareous
- Dolomitic
- Glauconitic
- No Samples
- Argillaceous

## COMPOSITE WELL LOG

### PALM VALLEY NO. 2

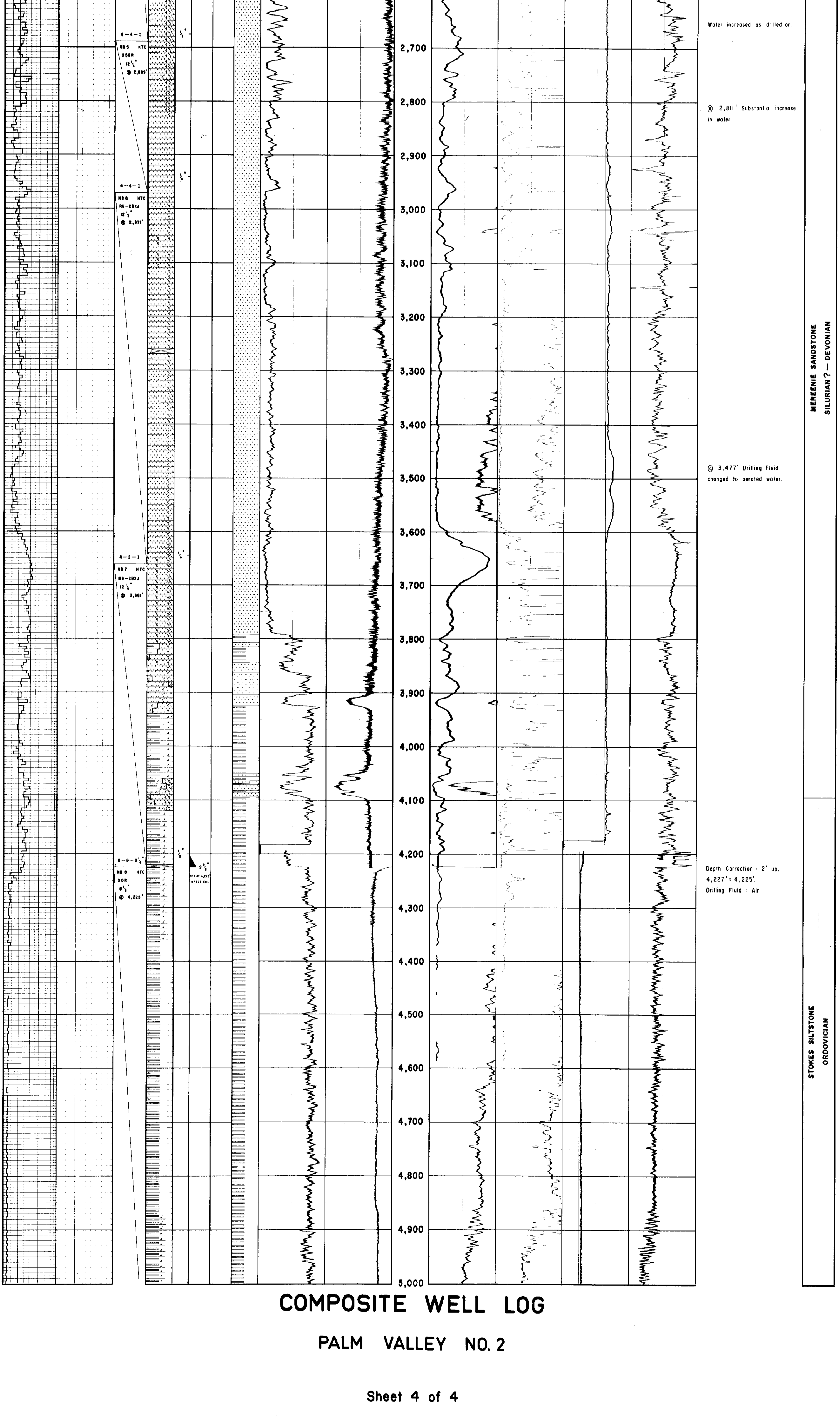
Sheet 2 of 4



## COMPOSITE WELL LOG

### PALM VALLEY NO. 2

Sheet 3 of 4



## COMPOSITE WELL LOG

### PALM VALLEY NO. 2

Sheet 4 of 4

