

SLIMLINE SYSTEMS
GAMMA, CALIPER, DENSITY,
NEUTRON POROSITY

COMPANY: PACIFIC OIL & GAS
WELL: GOLDEN GROVE 1
FIELD: MACARTHUR BASIN
PROVINCE/COUNTY: NORTHERN TERRITORY
COUNTRY/STATE: AUSTRALIA

LOCATION: PRVNC/CO. NORTHERN TERRITORY
FIELD: MACARTHUR BASIN
WELL: GOLDEN GROVE 1
COMPANY: PACIFIC OIL & GAS

PERMANENT DATUM CL. LOCATION: RR1, MS1
LOG MEASURED FROM CL. ELEVATION ABOVE PERMANENT DATUM CL. ELEVATIONS: RS1
DATE: 12-AUG-88

RUN NUMBER: 2
DEPTH-DRILLER: 0439.70
DEPTH-COCKER: 0439.79
FIRST READING: 0439.00
LAST READING: 0029.10
CASING-DRILLER: 0063.50
CASING-COCKER: 0063.50
BIT SIZE: 4.1"
HOLE FLUID TYPE: MENDRILL
DENS./VISC: 1.00
PH/FLUID LOSS: PIT
SAMPLE SOURCE: 2.4631DCG
RMT @ MEAS TEMP: 2.9626DCG
RMC @ MEAS TEMP: 2.9626DCG
SOURCE: RMT/RMC
RMT @ BIT
RMC @ BIT
TIME SINCE CIRC: V328
EQUIPMENT/BASE: RNE
RECORDED BY: D.LONG
WITNESSED BY:

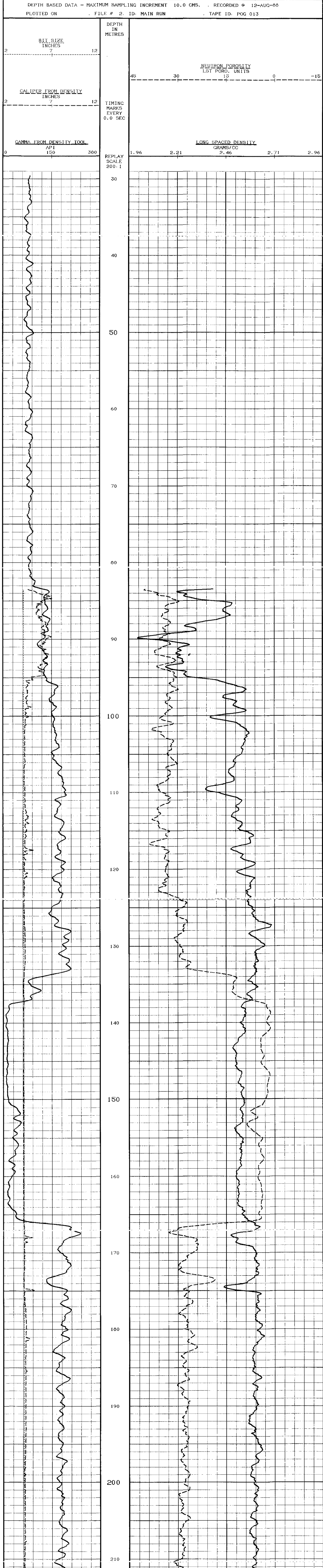
BOREHOLE RECORD		CASING RECORD	
RUN NUMBER	BIT FROM TO CASING SHOE	SIZE	WEIGHT FROM TO
2	4.1"	4.4"	

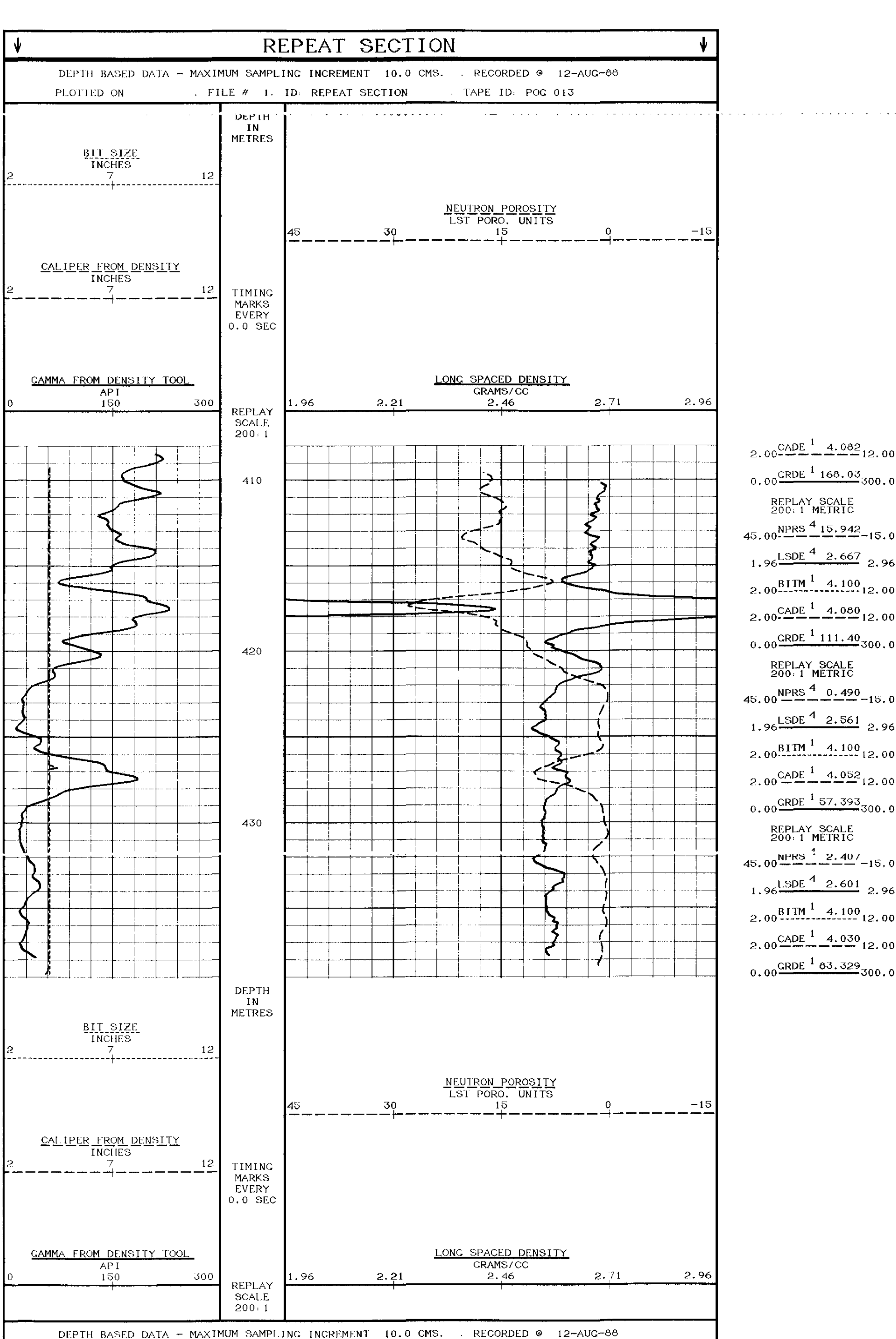
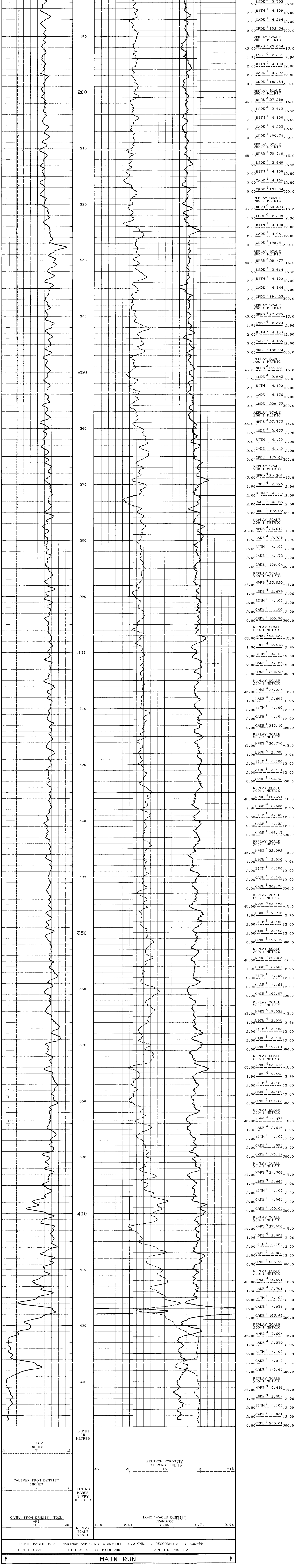
EQUIPMENT	RUN 1	RUN 2	RUN 3	RUN 4
MDU	1578/507			

REMARKS
SLIMLINE SYSTEMS GAMMA, CALIPER, DENSITY, NEUTRON POROSITY

SYSTEM CONFIGURATION DATES: LOGGED PROCESSED PLOTTED 23 JUN 86

ALL INTERPRETATIONS ARE OPINIONS BASED ON INFERENCES FROM ELECTRICAL OR OTHER MEASUREMENTS AND WE CANNOT, AND DO NOT, GUARANTEE THE ACCURACY OR CORRECTNESS OF ANY INTERPRETATIONS, AND WE SHALL NOT, EXCEPT IN THE CASE OF CROSS OR WILLFUL NEGLIGENCE ON OUR PART, BE LIABLE OR RESPONSIBLE FOR ANY LOSS, COSTS, DAMAGES OR EXPENSES INCURRED OR SUSTAINED BY ANYONE RESULTING FROM ANY INTERPRETATION MADE BY ANY OF OUR OFFICERS, AGENTS OR EMPLOYEES. THESE INTERPRETATIONS ARE ALSO SUBJECT TO OUR GENERAL TERMS AND CONDITIONS AS SET OUT IN OUR CURRENT PRICE SCHEDULE.





COMPANY: PACIFIC OIL & GAS
 WELL: GOLDEN GROVE 1
 FIELD: MACARTHUR BASIN
 PROVINCE/COUNTY: NORTHERN TERRITORY
 COUNTRY/STATE: AUSTRALIA