



SLIMLINE SYSTEMS
GAMMA, CALIPER, S.P.,
DUAL RESISTIVITY

COMPANY: PACIFIC OIL & GAS
WELL: GOLDEN GROVE 1
FIELD: MACARTHUR BASIN
PROVINCE/COUNTRY: NORTHERN TERRITORY
COUNTRY/STATE: AUSTRALIA

LOCATION PRVNC/CO. NORTHERN TERRITORY FIELD MACARTHUR BASIN WELL GOLDEN GROVE 1 COMPANY PACIFIC OIL & GAS PACIFIC OIL & GAS	LOCATION LSD SEC TWP RGE	OTHER SERVICES DD3, MS1 NN1
PERMANENT DATUM LOC MEASURED FROM CL DRILLING MEASURED FROM CL	ELEVATION ABOVE PERMANENT DATUM	ELEVATIONS KB DF CL
DATE 12-AUG-66	RUN NUMBER 6	
DEPTH-DRILLER 0406.10	DEPTH-LOCER 0439.70	
FIRST READING 0683.30	LAST READING 0683.50	
CASING-DRILLER 0063.50	CASING-LOCER 0063.50	
HOLE FLUID TYPE NEEDRILL	BIT SIZE 4.1"	
DENS./VISO. 1.00	PH/FLUID LOSS PIT	
SAMPLE SOURCE 2.4631D/CC	RPT @ MEAS. TEMP 2.5926D/CC	
RPT @ MEAS. TEMP 2.5926D/CC	RPT @ MEAS. TEMP 2.5926D/CC	
SOURCE: RPT/RHO RPT @ BHI	TIME SINCE CIRC MAX. REC. TEMP	
EQUIPMENT/BASE V326 BNE	RECORDED BY D.LONG	

RUN NUMBER	BOREHOLE RECORD		CASING RECORD	
	BIT	FROM TO	SIZE	WEIGHT FROM TO
6	4.1"	CASING SHOE ID	4.4"	

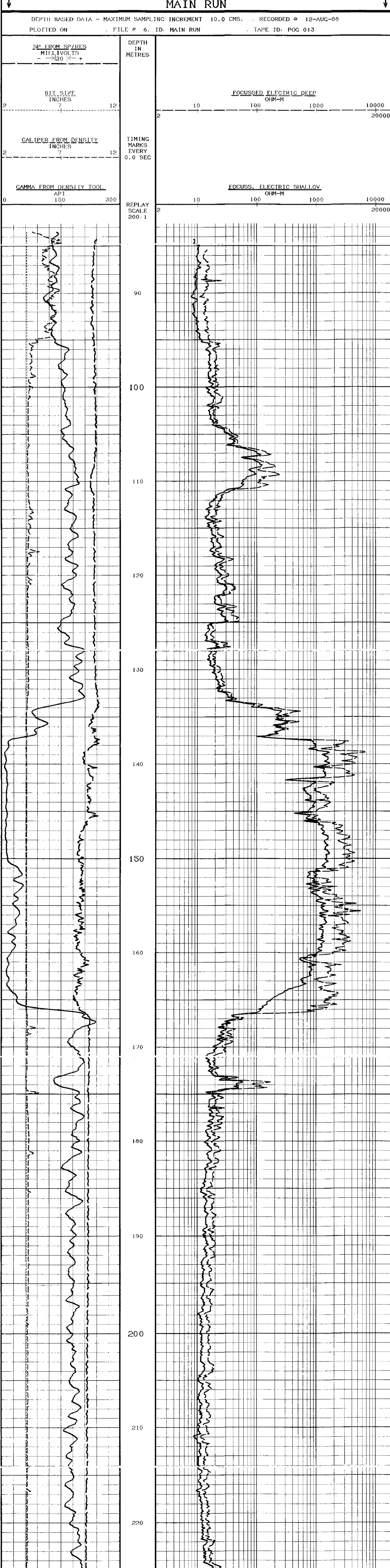
EQUIPMENT	RUN 1	RUN 2	RUN 3	RUN 4
FLUO	10/10/002			

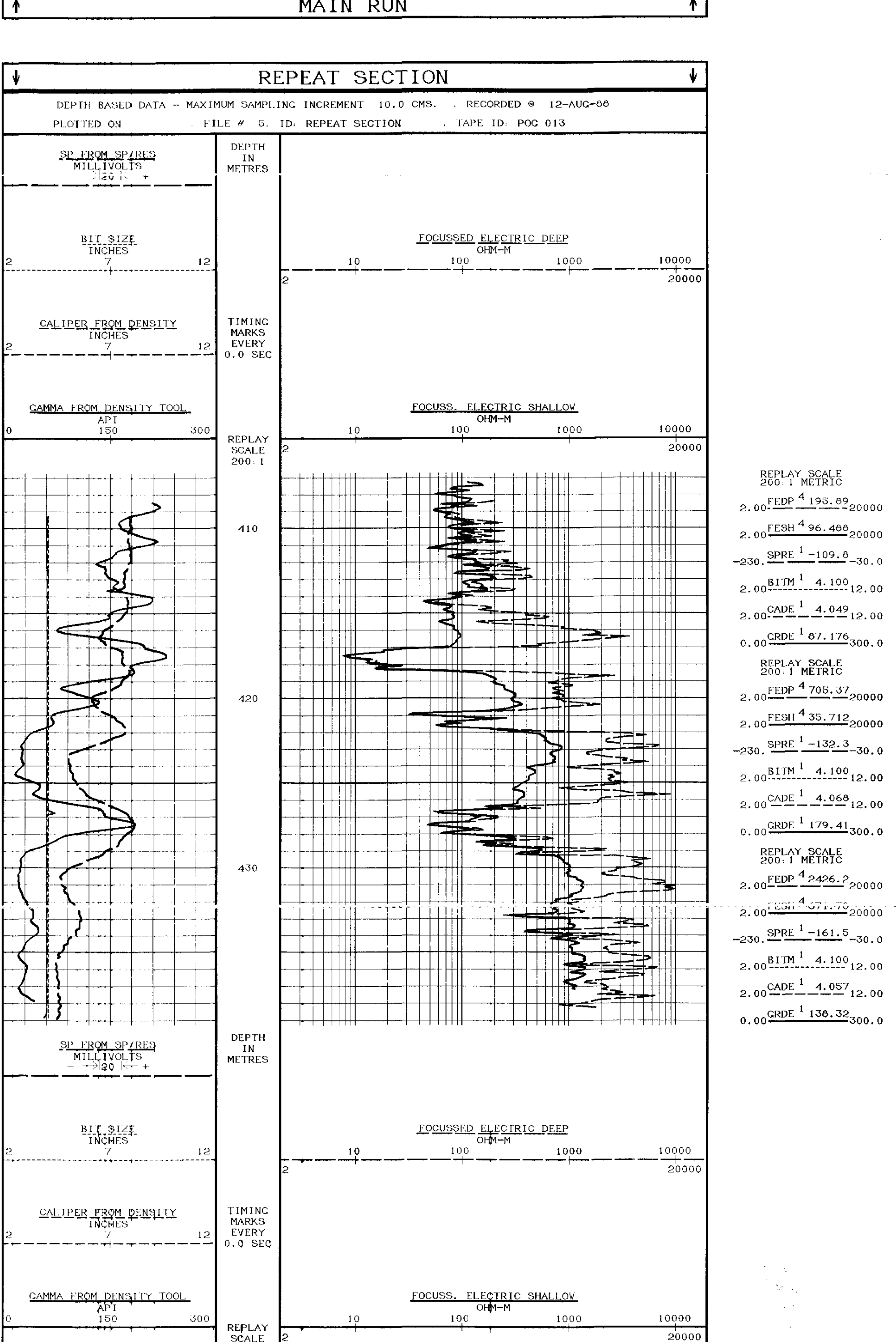
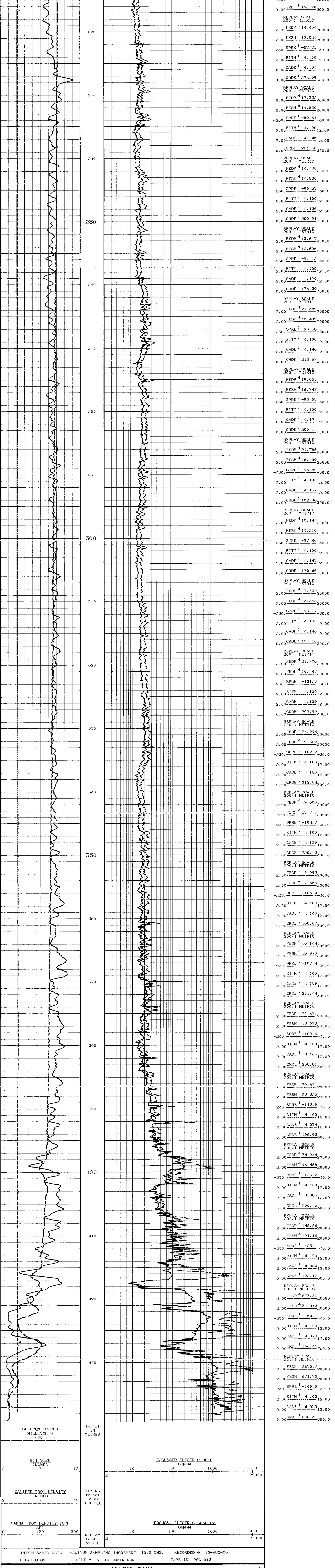
REMARKS

SLIMLINE SYSTEMS GAMMA, CALIPER, S.P., DUAL RESISTIVITY

SYSTEM CONFIGURATION DATES: LOGGED PROCESSED PLOTTED 23.JUN.66

ALL INTERPRETATIONS ARE OPINIONS BASED ON INFERENCES FROM ELECTRICAL OR OTHER MEASUREMENTS AND WE CANNOT AND DO NOT GUARANTEE THE ACCURACY OR CORRECTNESS OF ANY INTERPRETATIONS. AND WE SHALL NOT EXCEPT IN THE CASE OF GROSS OR WILFUL NEGLIGENCE ON OUR PART, BE LIABLE OR RESPONSIBLE FOR ANY LOSS, COSTS, DAMAGES OR EXPENSES INCURRED OR SUSTAINED BY ANYONE RESULTING FROM ANY INTERPRETATION MADE BY ANY OF OUR OFFICERS, AGENTS OR EMPLOYEES. THESE INTERPRETATIONS ARE ALSO SUBJECT TO OUR GENERAL TERMS AND CONDITIONS AS SET OUT IN OUR CURRENT PRICE SCHEDULE.





COMPANY PACIFIC OIL & GAS
 WELL GOLDEN GROVE 1
 FIELD MACARTHUR BASIN
 PROVINCE/COUNTY NORTHERN TERRITORY
 COUNTRY/STATE AUSTRALIA