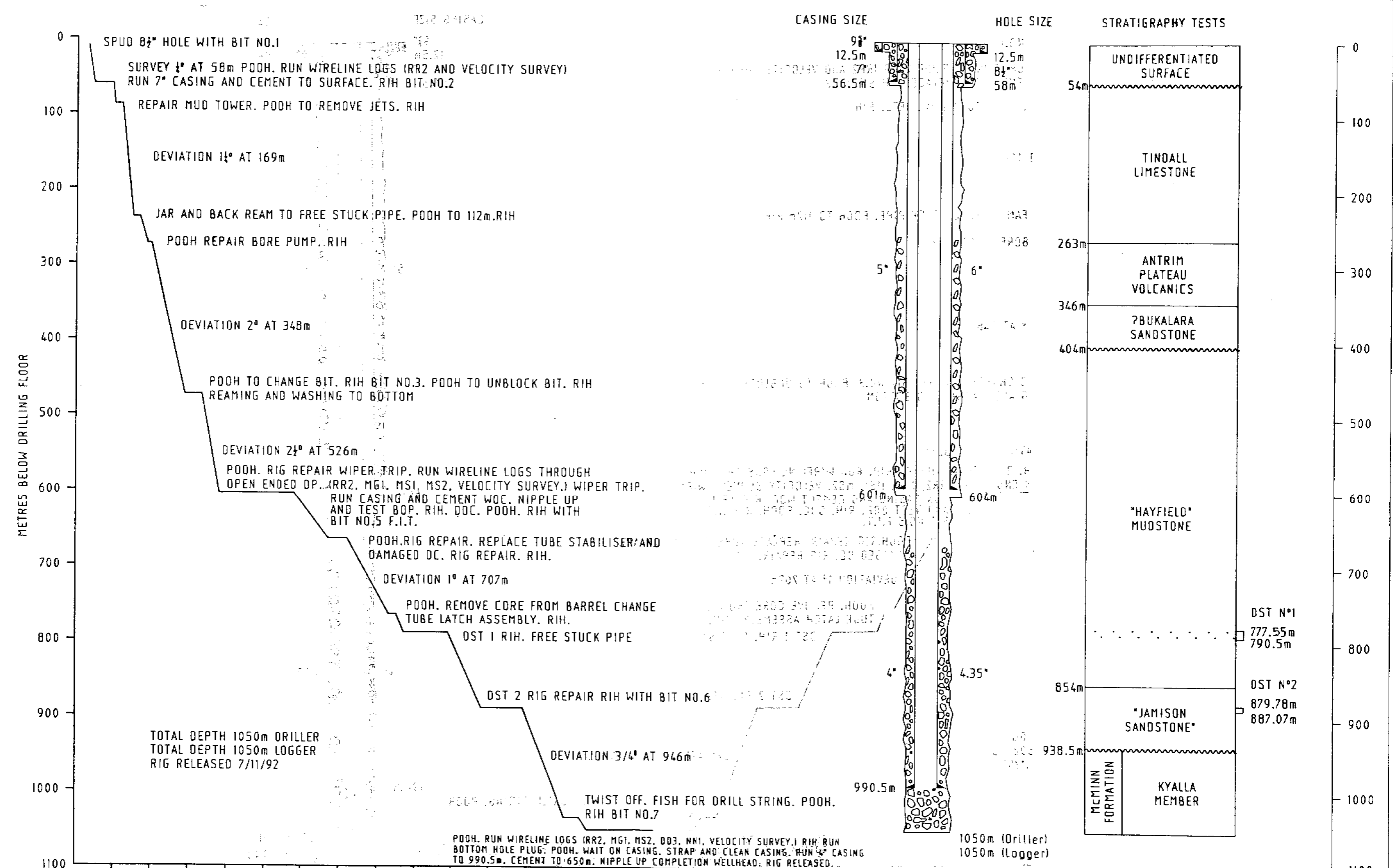


— Seismic Line
 ⊙ Pacific Wells

Pacific Oil & Gas Pty Limited			
MCARTHUR PROJECT EP 18 BALMAIN 1 LOCATION PLAN			
REF.	SE 53	DRAFTING	J.B.
SCALE	AS SHOWN	CHECKED	S.M.
AUTHOR	S.A.M.	REPORT	304741
DATE	JAN 93	PLAN No.	PeINTcw4882



DAYS DATE 0 2 4 6 8 10 12 14 16 18 20 22 24 26 28 30 32
 8/10 16/10 24/10 1/11

TOTAL DEPTH 1050m DRILLER
 TOTAL DEPTH 1050m LOGGER
 RIG RELEASED 7/11/92

POOH. RUN WIRELINE LOGS (IRR2, MGI, MS2, DD3, MNI, VELOCITY SURVEY.) RIG RUN
 BOTTOM HOLE PLUG. POOH. WAIT ON CASING. STRAP AND CLEAN CASING. RUN 4" CASING
 TO 990.5m. CEMENT TO 650m. NIPPLE UP. COMPLETION WELLHEAD. RIG RELEASED.

CRA Pacific Oil & Gas Pty Limited
 MCARTHUR BASIN
BALMAIN 1
DRILLING PROGRESS CHART

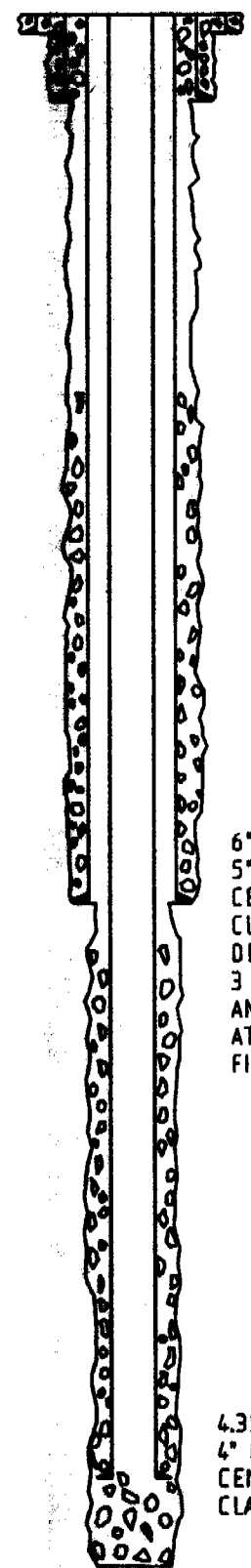
REF.		DRAFTING	C.H.
SCALE	1:500V	CHECKED	S.M.
AUTHOR	S.M.	REPORT	304741
DATE	JAN 93	PLAN No.	PetNTcw4884

0
100
200
300
400
500
600
700
800
900
1000
1100

BREDA FUCINE
WELLHEAD
INSTALLED
(SEE PLAN PetNTcw4788)

4" CASING STRING
FILLED WITH CORROSION
INHIBITING LIQUID

BOTTOM HOLE PLUG
SET WITH 19 SX CLASS A.
TAGGED AT 1006m.




121"-12.5m
9 3/4" CONDUCTOR AT 12.5m
CEMENTED TO CELLAR FLOOR

8 1/2"-58m
7" K55 23lb at 56.5m
CEMENTED TO SURFACE
WITH 31 SX CLASS A

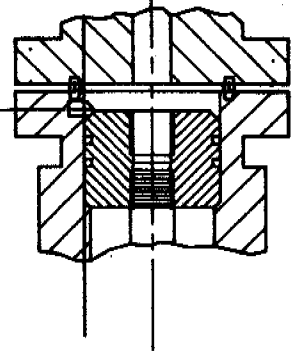
6"-604m
5" N80 131b AT 601m
CEMENTED WITH 132 SX
CLASS A. 22 BARRELS
DISPLACED THROUGH SHOE.
3 BARRELS PUMPED DOWN
ANNULUS TO CEMENT BASKET
AT 46m
FIT - EMW 20ppg

4.35"-1050m
4" N80 111b FL4S AT 990.5m
CEMENTED WITH 28 SX
CLASS G TO 650m (calculated).

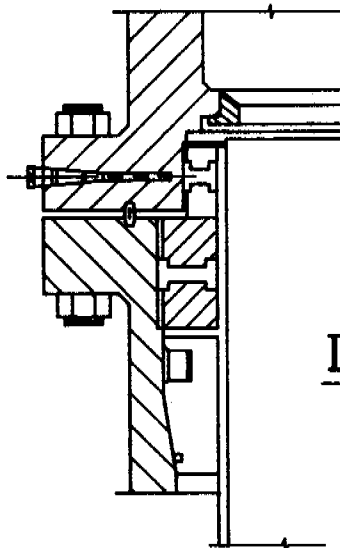
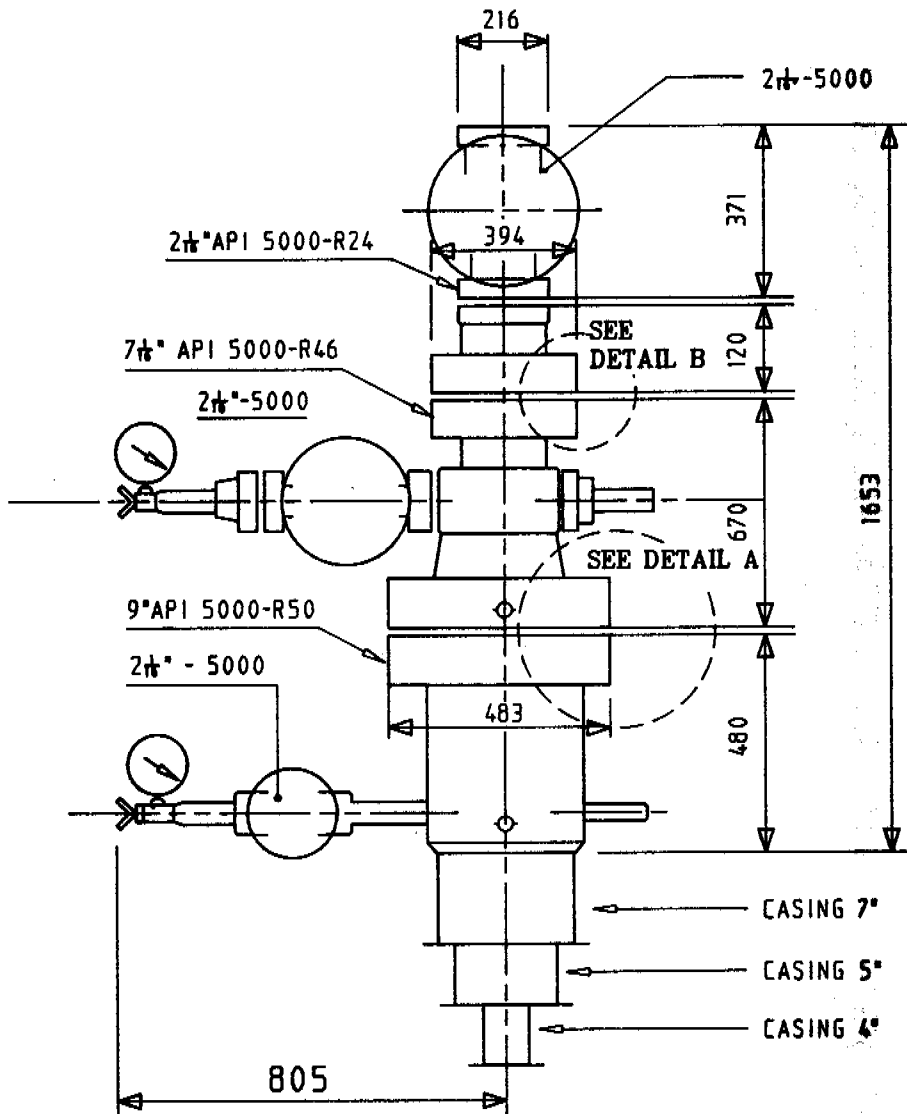
 MCARTHUR BASIN - EP18 BALMAIN 1 STATUS AT 7 NOV 1992			
REF.	.	DRAFTING	S.M.
SCALE	1:500V	CHECKED	S.M.
AUTHOR	S.M.	REPORT	304741
DATE	JAN 1993	PLAN No.	PetNTcw4885

DETAIL B

⌀ A.S.



**4" CASING HANGER
DP4-H1**



DETAIL A



Pacific Oil & Gas Pty Limited

MCARTHUR BASIN
BREDA FUCINE
WELLHEAD 5000 PSI

7" X 5" X 4"

REF.	.	DRAFTING	C.H.
SCALE	NTS	CHECKED	J.T.
AUTHOR	J.T.	REPORT	304741
DATE	OCT 1992	PLAN No.	PeINTcw4788

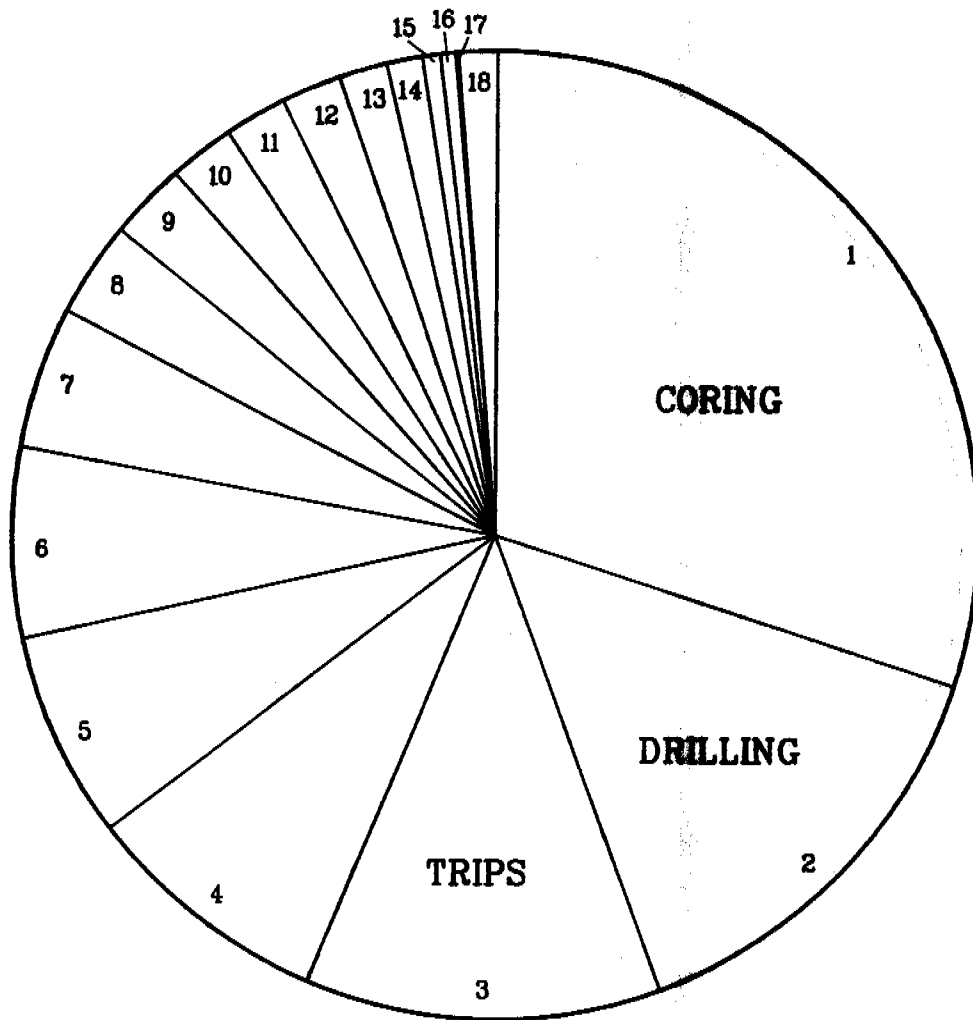

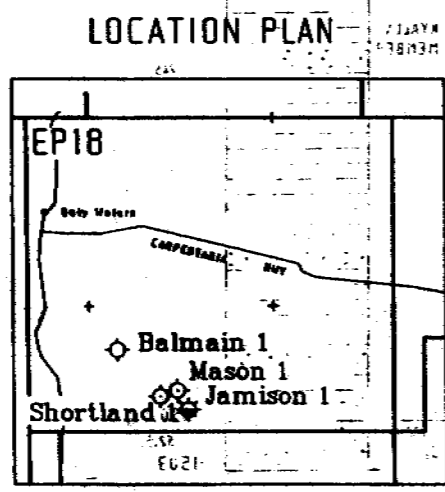
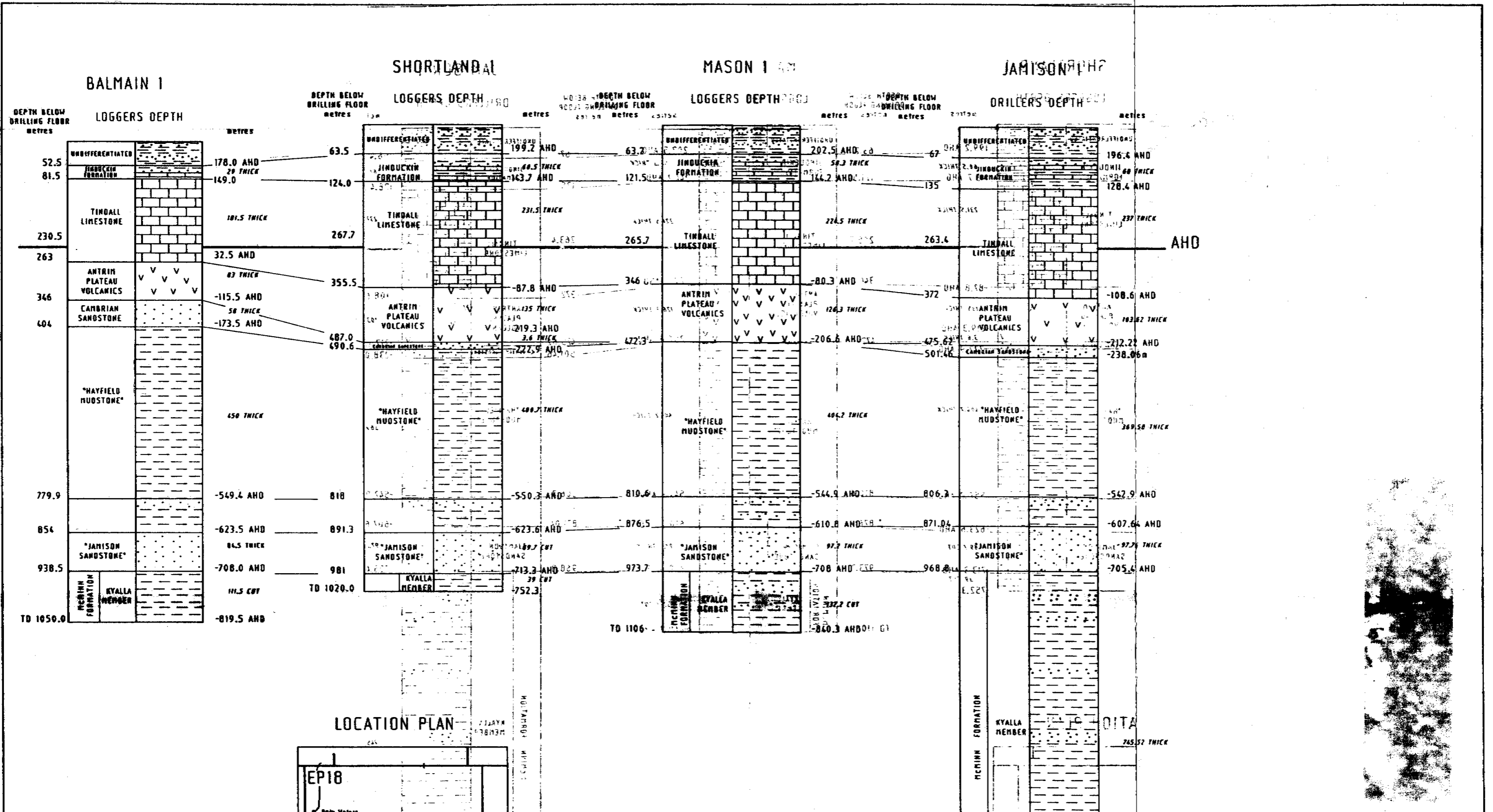


TABLE 3

TIME SUMMARY		
OPERATION	HOURS	%
1 CORING	217	30.0
2 DRILLING	104.4	14.4
3 TRIPS	86.4	11.9
4 DRILL STEM TESTS	60	8.3
5 RIG REPAIR	49.4	6.9
6 LOGGING	46.4	6.4
7 CEMENTING, WOC	34	4.7
8 CASING	23	3.2
9 DOWN HOLE TROUBLE	18.4	2.6
10 CIRCULATE AND CONDITION	15.4	2.2
11 NU. BOPS, PRESSURE TESTS etc	15.4	2.1
12 WAIT ON CASING	14.4	2.0
13 REARMING	11.4	1.6
14 FISHING	8.4	1.2
15 SURFACE TROUBLE	4.4	0.8
16 DEVIATION SURVEYS	3.4	0.5
17 FIT	1	0.1
18 MISCELLANEOUS	9.4	1.3
TOTAL	723.4	100



 Pacific Oil & Gas Pty Limited			
MCARTHUR BASIN BALMAIN 1 TIME DISTRIBUTION			
REF.		DRAFTING	C.H.
SCALE		CHECKED	S.M.
AUTHOR	S.M.	REPORT	304741
DATE	JAN 93	PLAN No.	Pe1NTcw4883



COG Pacific Oil & Gas Pty Limited

MCARTHUR BASIN
EP18
WELL SECTION
BALMAIN 1, SHORTLAND 1, MASON 1, JAMISON 1

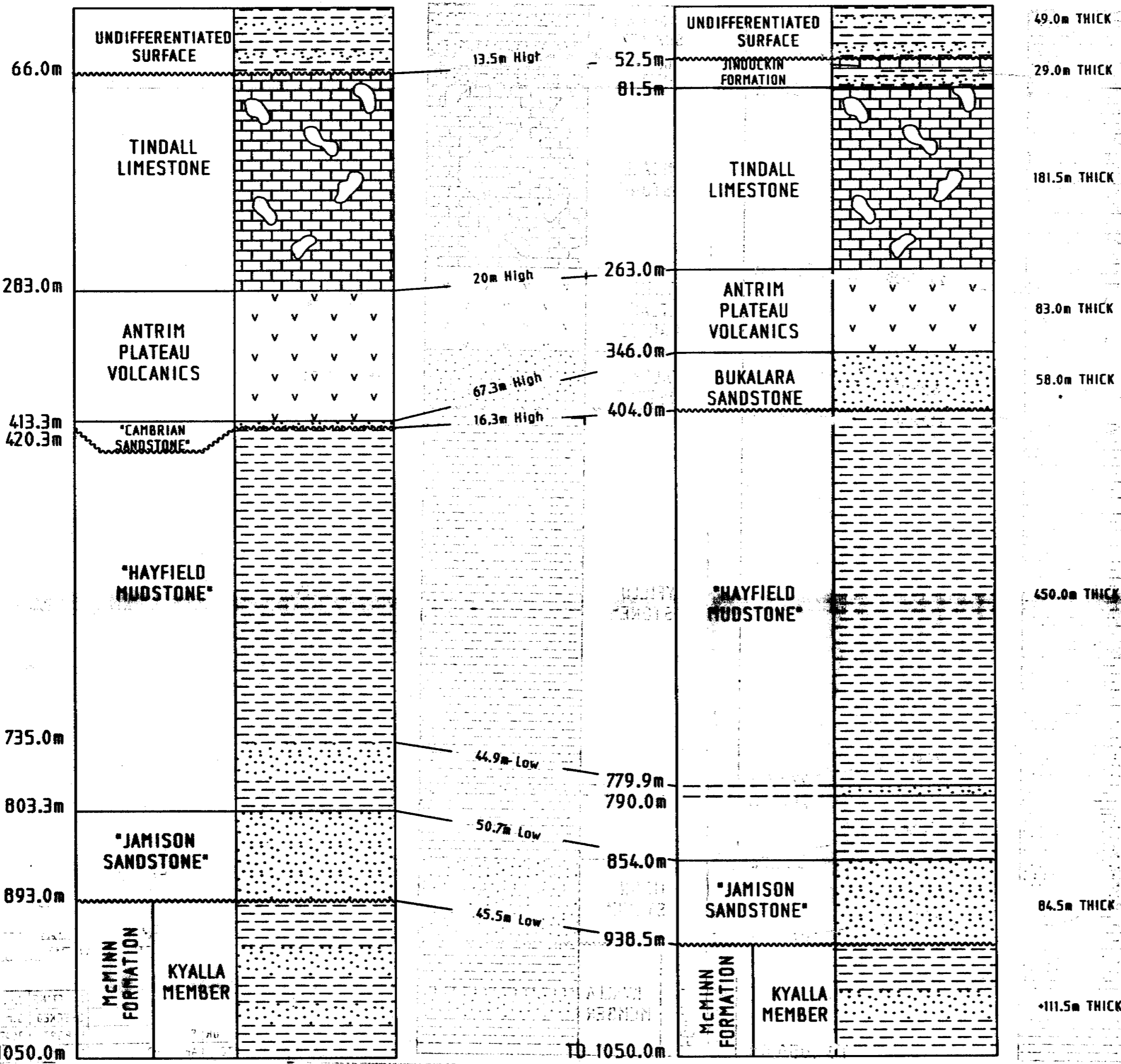
REF.	SE 53	DRAFTING	J.B.
SCALE	1:800	CHECKED	S.A.H.
AUTHOR	S.A.H.	REPORT	304721
DATE	JAN 93	PLAN No.	PeINTcw 4842

Depths below
drilling floor

PROGNOSED

Depths below
drilling floor

ACTUAL



Pacific Oil & Gas Pty Limited

McARTHUR BASIN

EP 18 BALMAIN 1

PROGNOSED vs ACTUAL SECTION

REF.	SES3-2	DRAFTING	J.B.
SCALE	1:4000	CHECKED	S.M.
AUTHOR	S.M.	REPORT	30474101
DATE	APRIL 93	PLAN No.	PeINTcw 4925

ROPER GROUP STRATIGRAPHY

		TERTIARY / CRETACEOUS			
		JINDUCKIN FORMATION			
CAMBRIAN		TINDALL LIMESTONE			
		ANTRIM PLATEAU VOLCANICS			
		BUKALARA SANDSTONE			
ROPER GROUP	MAIWOK SUBGROUP	CHAMBERS RIVER FORMATION	"HAYFIELD MUDSTONE"		
		MCMINN FORMATION	BUKALORKMI SST MBR	"JAMISON SANDSTONE"	
			KYALLA MEMBER		
		SHERWIN IRONSTONE		MOROAK SANDSTONE MEMBER	
		VELKERRI FORMATION		"UPPER"	
				"MIDDLE"	
				"LOWER"	
				BESSIE CREEK SANDSTONE	
				CORCORAN FORMATION	
	ABNER SANDSTONE		MUNYI MEMBER		
			HODGSON SANDSTONE MEMBER		
			JALBOI MEMBER		
			ARNOLD SANDSTONE MEMBER		
			CRAWFORD FORMATION		
		MAINORU FORMATION			
		LIMMEN SANDSTONE			
		MANTUNGULA FORMATION			
		NATHAN GROUP			
		McARTHUR GROUP			
		TAWALLAH GROUP			

PR 92/122B

Vol 2

