

# CROCKER

## DATA PROCESSING

# MASON #1

## Composite Logs

Company	PACIFIC OIL AND GAS LTD.
Well Name	MASON #1
Field	WILDCAT
Country	AUSTRALIA
Nation	AUSTRALIA
State	N.T.
County or Rig name	ROCKDRILL #23
Field Location	SP 570 ON SEISMIC LINE MA91-223
Latitude	016 43' 28.600" S DMS
Longitude	133 44' 16.170" E DMS
Perm. Datum	MSL
Elevation Perm. Datum	0.00 M
Elevation KB (wrt EPD)	264.00 M
Elevation DF (wrt EPD)	264.00 M
Elevation GL (wrt EPD)	260.30 M
Elev. Log Zero (wrt EPD)	264.00 M
Above Perm. Datum	264.00 M
Log measured from	DF
Services	DIL-BHC-GR
Service company	SCHLUMBERGER
Date Plotted	Tuesday, 24 June 2008
Time Plotted	11:16:44 AM



PETROLOG SOFTWARE Version 10.5 (Beta)



### Run Information

Run number	1			
Log date	18-DEC-1991			
Depth-Driller	517.10 M			
Depth-Logger	517.00 M			
Bottom log interval	517.00 M			
Top log interval	91.00 M			
Casing-Driller	90.50 M			
Casing-Logger	91.00 M			
Casing-Driller	46.075 INCH			

Casing Diameter	13.375 INCH			
Casing Weight	48.00 LB/F3			
Bit Size	12.250 INCH			
Surface hole temp	26.67 DEGC			
Bottom hole temp	82.22 DEGC			
Logging unit Loc	LEA			
Logging Company ID	440			
Recorded by	S RYAN			
Witness	MR J TORKINGTON			

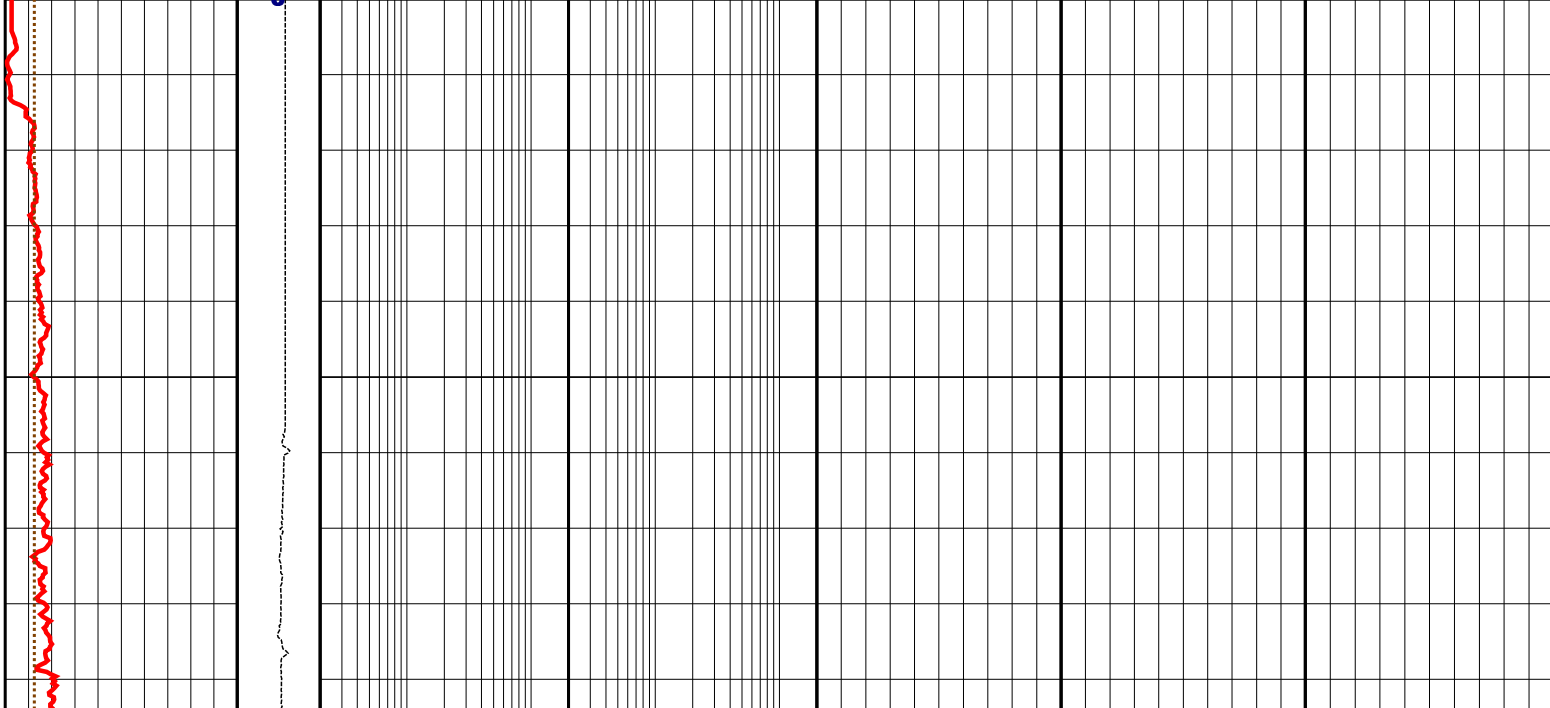
Logs loaded, edited and merged from LIS files by CDP in May 2008  
 Well header manually completed from scanned field print. (Incomplete information supplies)  
 SP Drift corrected.

Since well log interpretations are opinions based upon inferences from well logs, we cannot and do not guarantee the correctness or accuracy of any interpretation. Therefore we shall not be liable or responsible for any loss, damage, cost or expense incurred or sustained by anyone resulting from any interpretation.

## Log Description

- GR            Gamma Ray
- BS            Bit Size
- CALI         Caliper
- SP            Spontaneous Potential Log
- LLD         Laterolog Deep Resistivity
- LLS         Shallow Laterolog
- MSFL        Micro Spherically Focused Log
- RHOB        Compensated Formation Density
- NPHI        Neutron Porosity
- DT            Delta T Compressional
- PEF         Photoelectric Factor
- DRHO        Density Correction
- TENS        Cable tension at surface
- THOR        Thorium Concentration
- URAN        Uranium Concentration
- POTA        Potassium Concentration
- DTL         Delta T Long Spacing

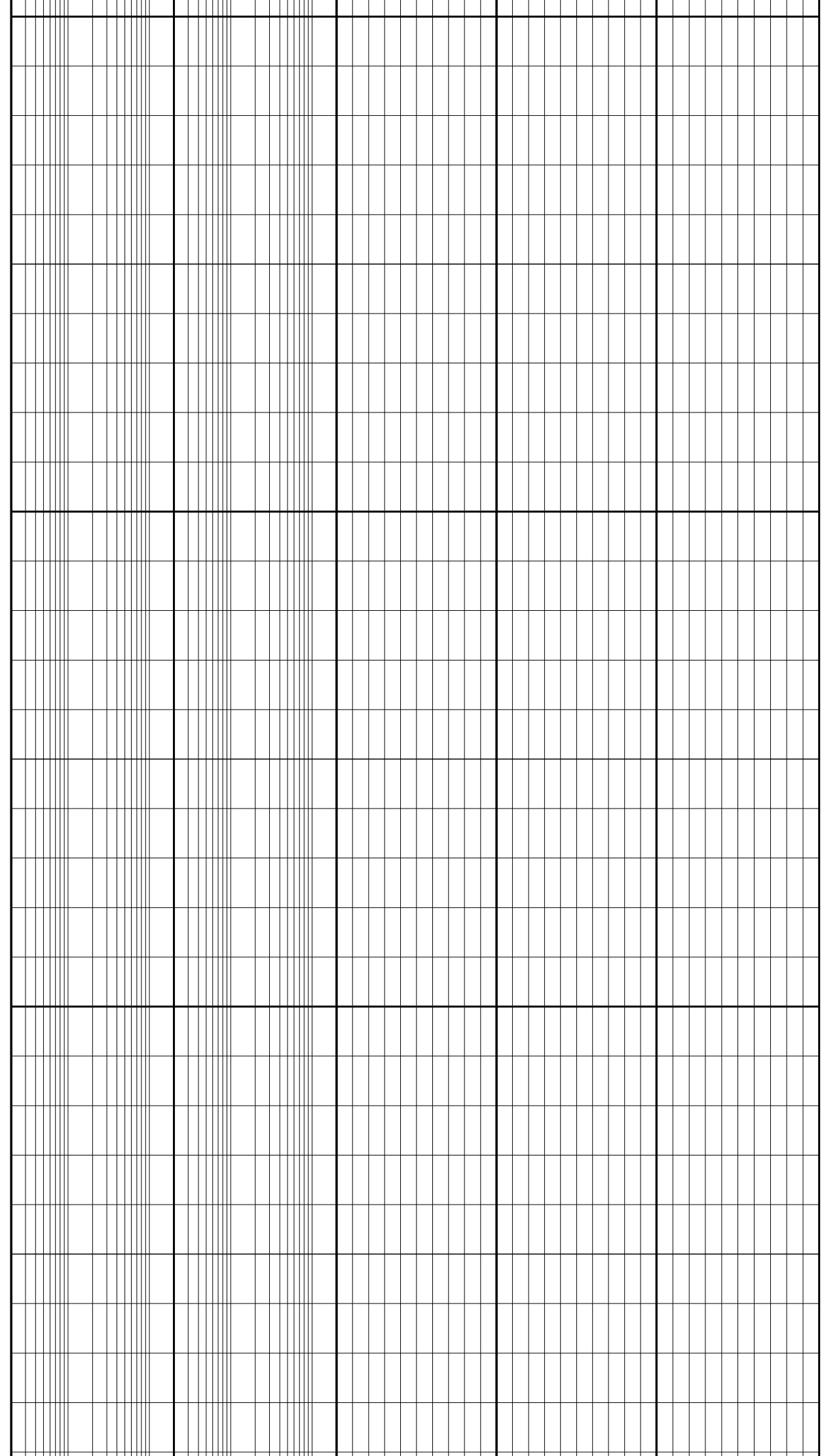
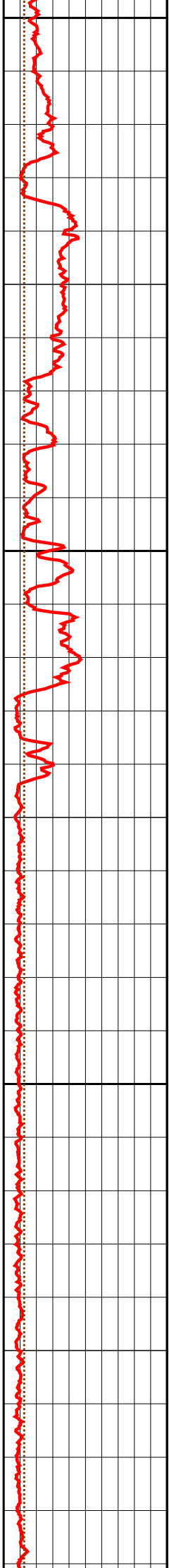
0.0	GR (API)	250.0										
6.0	BS (INCH)	26.0	DEPTH	0.2	LLD (OHMM)	2000.0	1.95	RHOB (G/C3)	2.95	28.0	THOR (PPM)	-12.0
6.0	CALI (INCH)	26.0	M	0.2	LLS (OHMM)	2000.0	0.45	NPHI (V/V)	-0.15	0.0	URAN (PPM)	20.0
-80.0	SP (MV)	20.0	1:500	0.2	MSFL (OHMM)	2000.0	140.0	DT (US/F)	40.0	-0.14	POTA (V/V)	0.06
							0.0	PEF (B/E)	10.0	-0.25	DRHO (G/C3)	0.25
							140.0	DTL (US/F)	40.0			



50

100

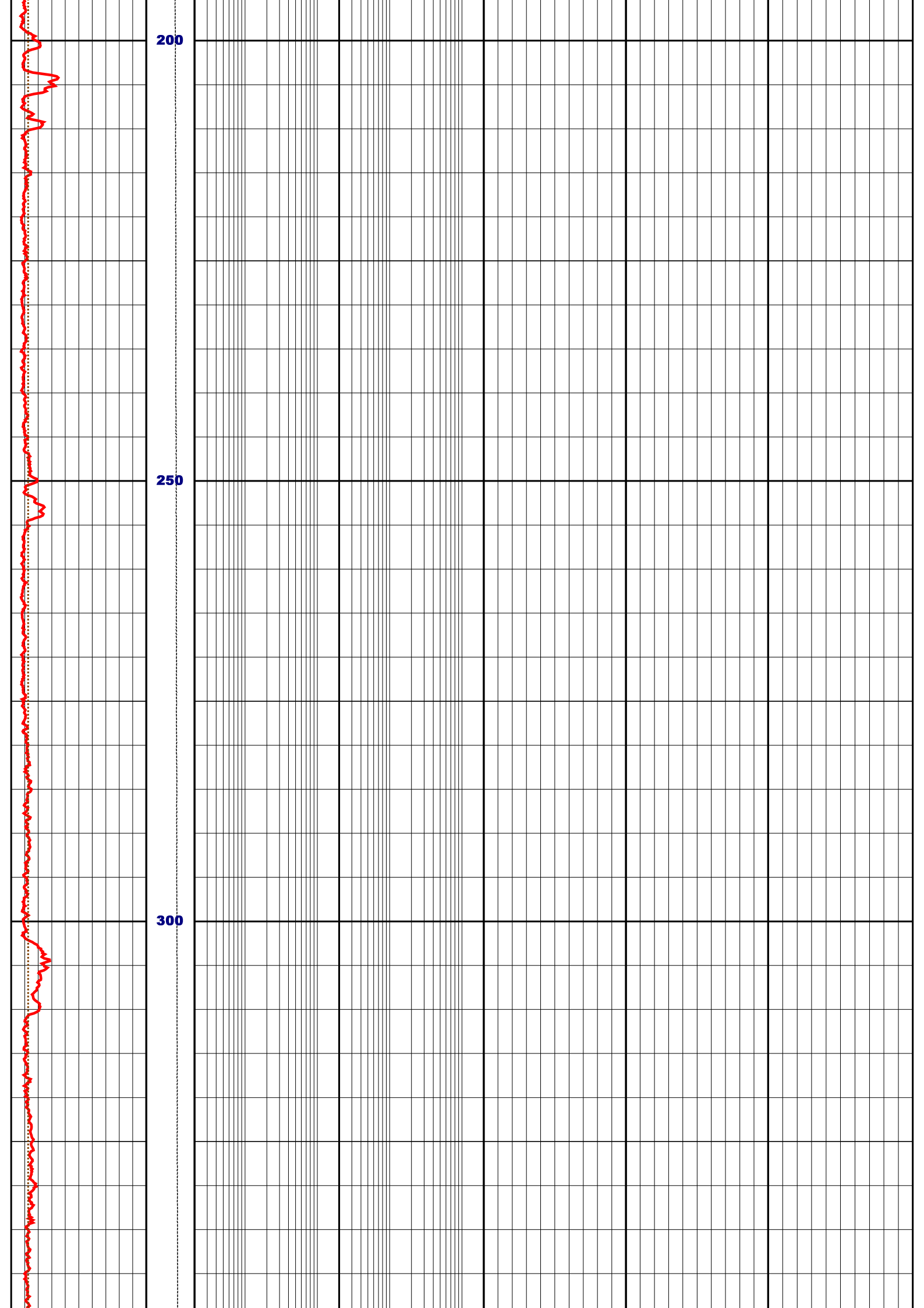
150



200

250

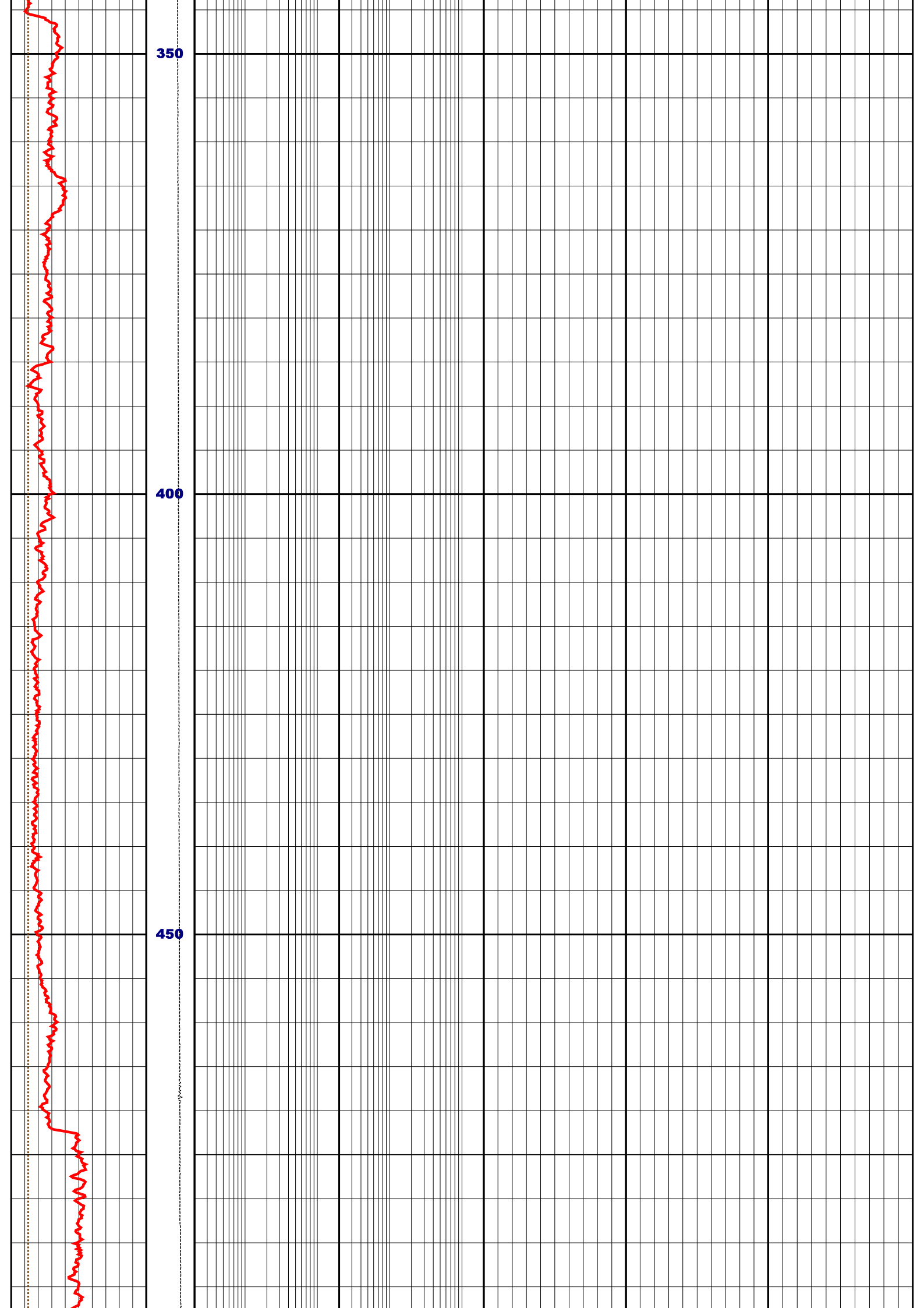
300

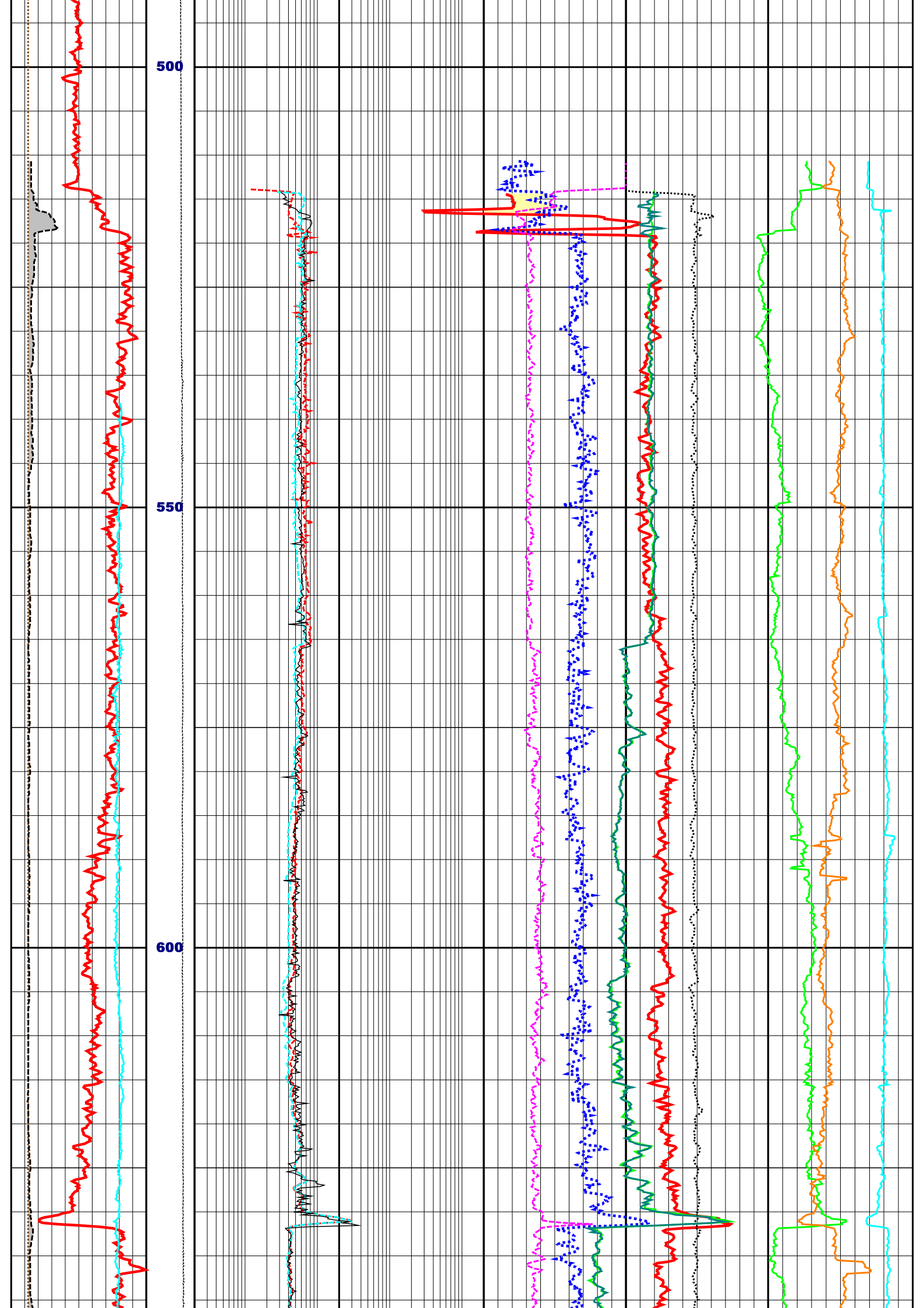


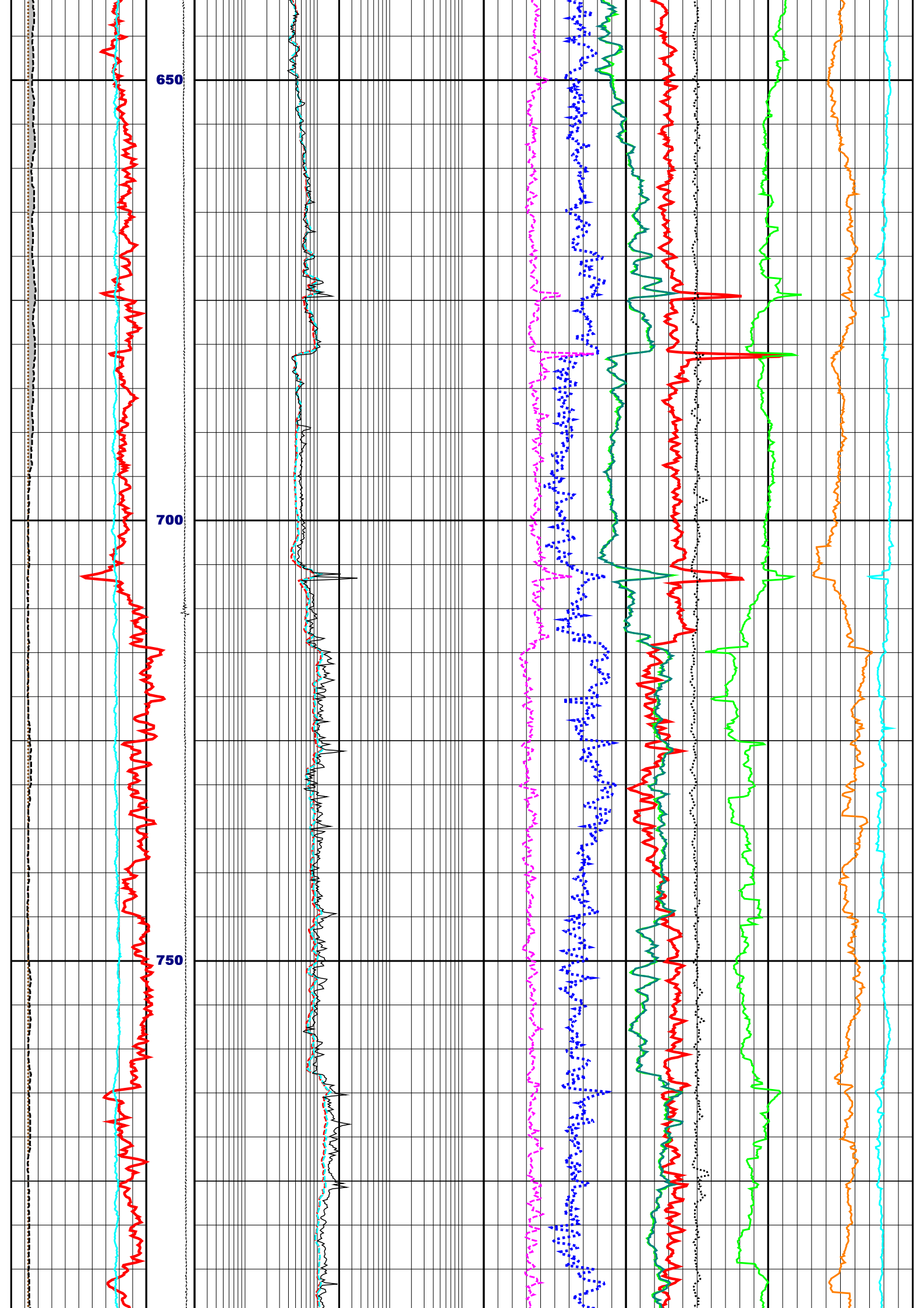
350

400

450

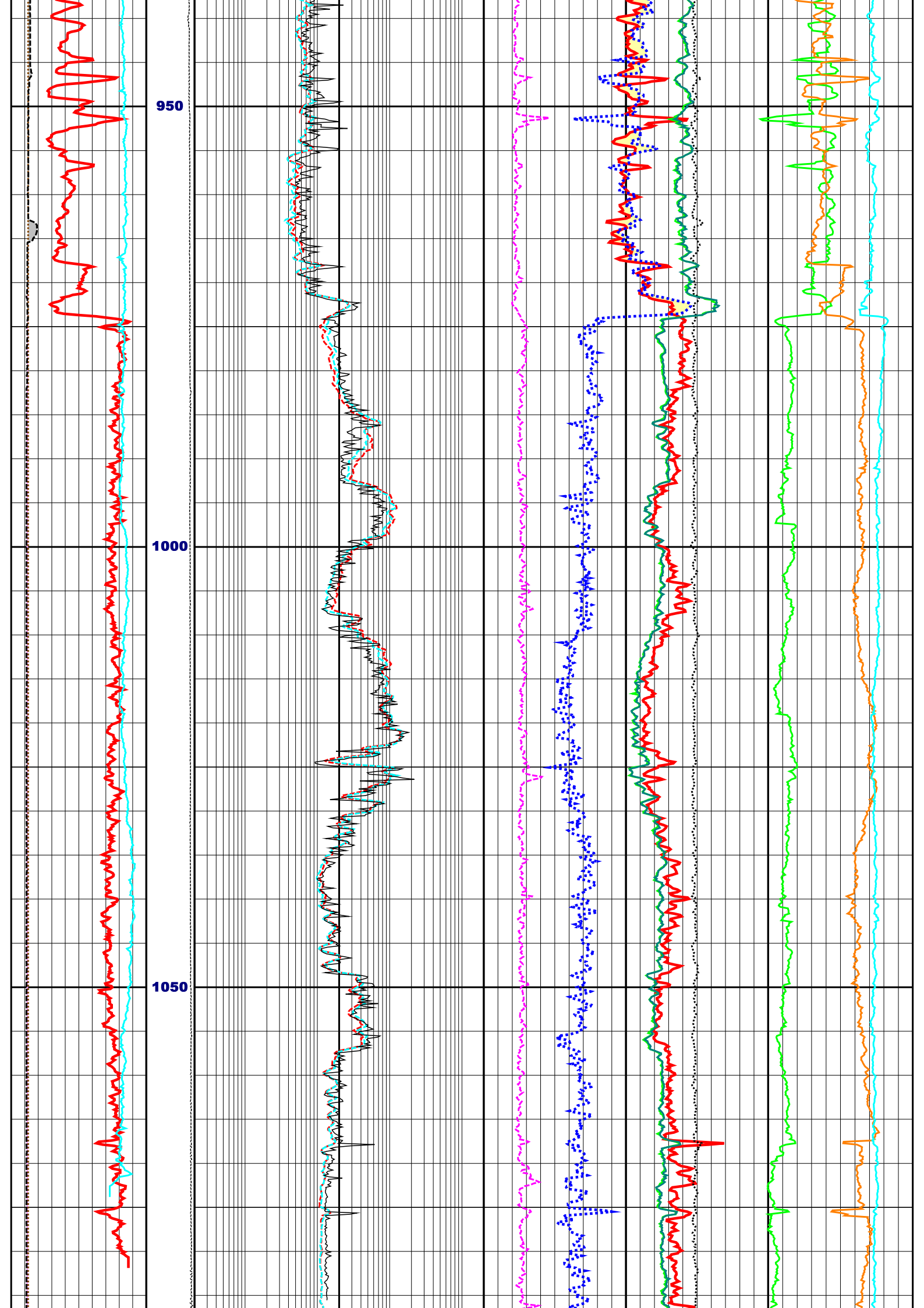












1100

0.0	GR (API)	250.0	0.2	LLD (OHMM)	2000.0	1.95	RHOB (G/C3)	2.95	28.0	THOR (PPM)	-12.0
6.0	BS (INCH)	26.0	0.2	LLS (OHMM)	2000.0	0.45	NPHI (V/V)	-0.15	0.0	URAN (PPM)	20.0
6.0	CALI (INCH)	26.0	0.2	MSFL (OHMM)	2000.0	140.0	DT (US/F)	40.0	-0.14	POTA (V/V)	0.06
-80.0	SP (MV)	20.0				0.0	PEF (B/E)	10.0	-0.25	DRHO (G/C3)	0.25
						140.0	DTL (US/F)	40.0			

0.0	GR (API)	250.0
6.0	BS (INCH)	26.0
6.0	CALI (INCH)	26.0
-80.0	SP (MV)	20.0

0.2	LLD (OHMM)	2000.0
0.2	LLS (OHMM)	2000.0
0.2	MSFL (OHMM)	2000.0

1.95	RHOB (G/C3)	2.95	28.0	THOR (PPM)	-12.0
0.45	NPHI (V/V)	-0.15	0.0	URAN (PPM)	20.0
140.0	DT (US/F)	40.0	-0.14	POTA (V/V)	0.06
0.0	PEF (B/E)	10.0	-0.25	DRHO (G/C3)	0.25
140.0	DTL (US/F)	40.0			

DEPTH  
M  
1:500

TENS (KSI) 3000.0