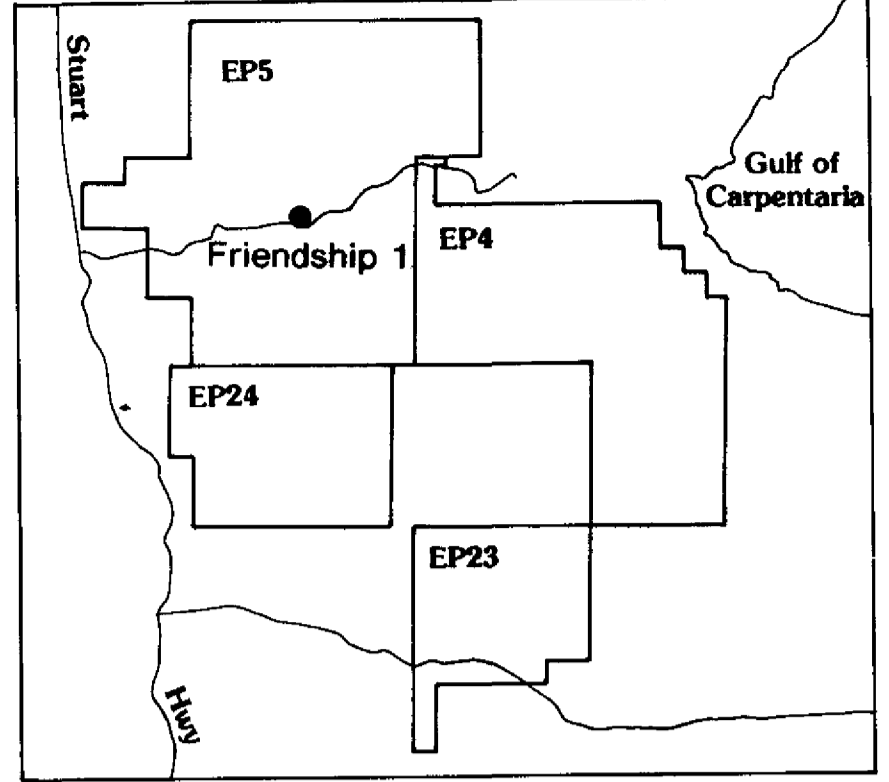




Pacific Oil & Gas Pty. Limited

Composite Well Log
FRIENDSHIP No.1



| LOG DATA | | | | | |
|-----------|---------|------|----------------|----------------|---------|
| SUITE No. | TD | BHT | RM | RMF | DATE |
| 1 | 394.70m | 50°C | 1.6 cm at 25°C | 2.2 cm at 21°C | 24/6/88 |
| 2 | | | | | |
| 3 | | | | | |
| 4 | | | | | |
| 5 | | | | | |

Logged by: B.P.B. Truck No.: V 328

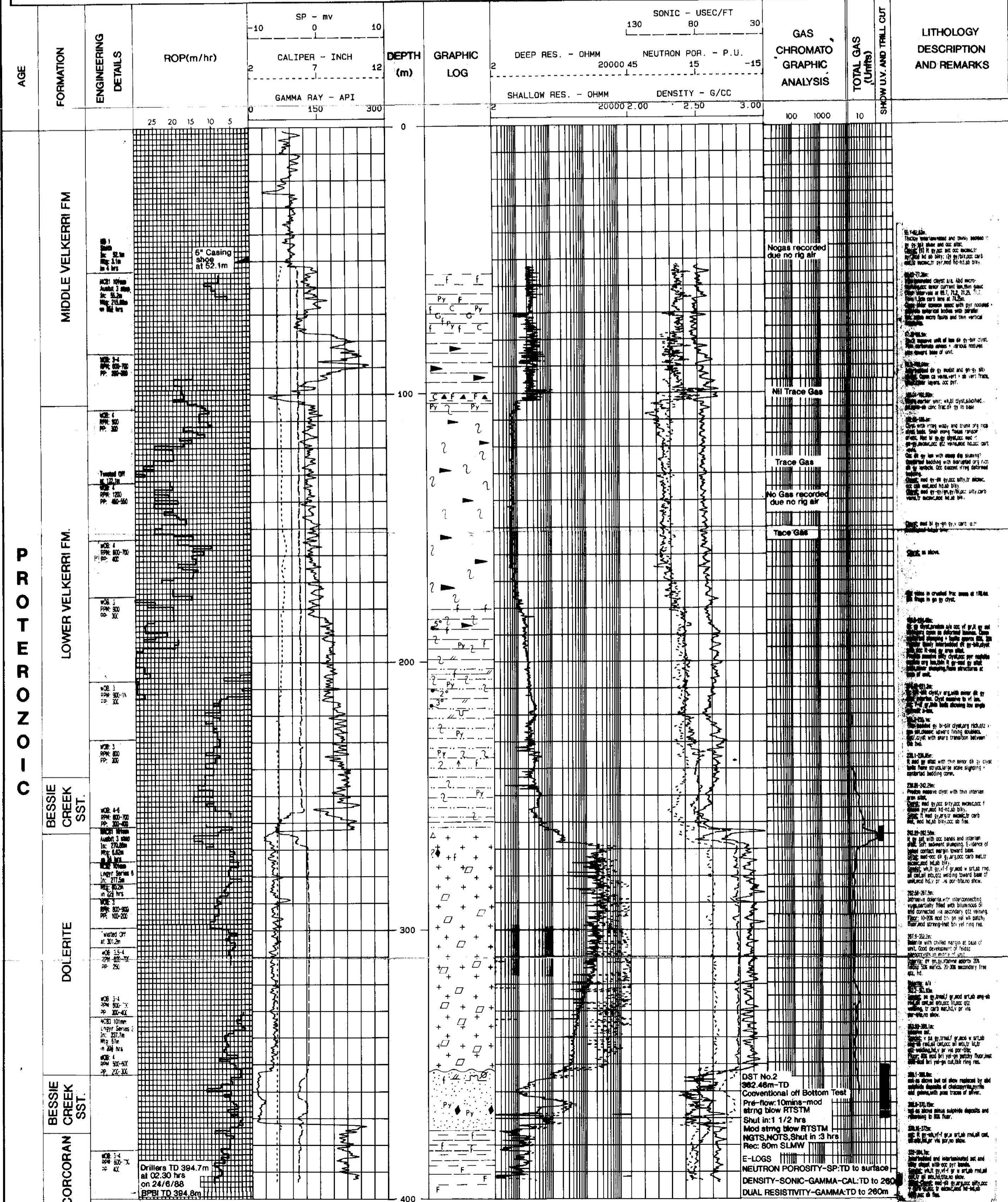
Services Run: Gamma, Caliper, Penisty, Neutron Porosity, Spontaneous potential, Dual Resistivity, Sonic

| GENERAL DATA | |
|-----------------------------------|---------------------------------------|
| Date Spudded: 10/6/88 | Date at TD: 24/6/88 |
| Date Rig Release: 25/6/88 | Total Depth: DLR 394.8m LGR 394.7m |
| Permit: E.P.5 | Rig(s) 18 |
| Latitude: 14° 52' 33" S | AMG: 382750 E 8355100 N Zone 53 |
| Longitude: 133° 54' 36" E | Map Sheet: Morook 1:100,000 Sh. |
| Elevation: GL 59.04m DF 60.54m | Mud Type: Newdrill |
| Status: Plugged and Abandoned | Basin: Mc Arthur Basin |
| CRAE Drillhole No: Friendship 1 | Geologist(s): I.M. Ledlie |

| CASING AND HOLE DATA | | | | | | | | |
|----------------------|----------|-------|----------|-------|-------|--------|--------|---------------------|
| NO. | BIT SIZE | DEPTH | CSG SIZE | WT | GRADE | THREAD | DEPTH | TOP OF CMT |
| 1 | | | 5" | 13ppf | K55 | FL45 | 51.47m | Cemented to Surface |
| 2 | | | | | | | | |
| 3 | | | | | | | | |
| 4 | | | | | | | | |
| 5 | | | | | | | | |

| GEOLOGICAL SYMBOLS | | | | ENGINEERING SYMBOLS | | | |
|--------------------|--|----------------|-----|------------------------------|--|------------------|--|
| Conglomerate | | Faulting | F | Slumping/Collapse Structures | | Deviation Survey | |
| Sandstone | | Pyrite | Py | Boudinage | | Casing Shoe | |
| Siltstone | | Fracturing | Fy | Cracking | | Drill Stem Test | |
| Claystone | | Glauconite | G | Dewatering | | Cement Plug | |
| Limestone | | Intraclasts | I | Ripple Marks | | New Bit | |
| Dolomite | | Calcite | C | Cross Bedding | | Top of Cement | |
| Chert | | Lithic Grains | L | Oxidation | | Sample Point | |
| Anhydrite | | Feldspar | Fd | Caverns | | | |
| Volcanics | | Mineralisation | M | Graded Bedding | | | |
| Metamorphics | | Stromatolites | St | Visible Porosity | | | |
| Plutonics | | Carbonaceous | Ca | Flaser Bedding | | | |
| Lenses | | Stylolites | Stl | Flat Pebbles | | | |
| | | Scour & Fill | Sf | Formation Dip | | | |
| | | Nodules | N | | | | |

| Pacific Oil & Gas Pty Limited | | | |
|-------------------------------|-----------------------|----------|--------------|
| Ref. | | Drafting | J.B. & C.H. |
| Scale: | 1:1000 | Report | 303624 |
| Author | J.Torkington & K.Maim | Plan No. | PerNTcw 4028 |
| Date | March '89 | | |



51-52m: ...
53-54m: ...
55-56m: ...
57-58m: ...
59-60m: ...
61-62m: ...
63-64m: ...
65-66m: ...
67-68m: ...
69-70m: ...
71-72m: ...
73-74m: ...
75-76m: ...
77-78m: ...
79-80m: ...
81-82m: ...
83-84m: ...
85-86m: ...
87-88m: ...
89-90m: ...
91-92m: ...
93-94m: ...
95-96m: ...
97-98m: ...
99-100m: ...
101-102m: ...
103-104m: ...
105-106m: ...
107-108m: ...
109-110m: ...
111-112m: ...
113-114m: ...
115-116m: ...
117-118m: ...
119-120m: ...
121-122m: ...
123-124m: ...
125-126m: ...
127-128m: ...
129-130m: ...
131-132m: ...
133-134m: ...
135-136m: ...
137-138m: ...
139-140m: ...
141-142m: ...
143-144m: ...
145-146m: ...
147-148m: ...
149-150m: ...
151-152m: ...
153-154m: ...
155-156m: ...
157-158m: ...
159-160m: ...
161-162m: ...
163-164m: ...
165-166m: ...
167-168m: ...
169-170m: ...
171-172m: ...
173-174m: ...
175-176m: ...
177-178m: ...
179-180m: ...
181-182m: ...
183-184m: ...
185-186m: ...
187-188m: ...
189-190m: ...
191-192m: ...
193-194m: ...
195-196m: ...
197-198m: ...
199-200m: ...
201-202m: ...
203-204m: ...
205-206m: ...
207-208m: ...
209-210m: ...
211-212m: ...
213-214m: ...
215-216m: ...
217-218m: ...
219-220m: ...
221-222m: ...
223-224m: ...
225-226m: ...
227-228m: ...
229-230m: ...
231-232m: ...
233-234m: ...
235-236m: ...
237-238m: ...
239-240m: ...
241-242m: ...
243-244m: ...
245-246m: ...
247-248m: ...
249-250m: ...
251-252m: ...
253-254m: ...
255-256m: ...
257-258m: ...
259-260m: ...
261-262m: ...
263-264m: ...
265-266m: ...
267-268m: ...
269-270m: ...
271-272m: ...
273-274m: ...
275-276m: ...
277-278m: ...
279-280m: ...
281-282m: ...
283-284m: ...
285-286m: ...
287-288m: ...
289-290m: ...
291-292m: ...
293-294m: ...
295-296m: ...
297-298m: ...
299-300m: ...
301-302m: ...
303-304m: ...
305-306m: ...
307-308m: ...
309-310m: ...
311-312m: ...
313-314m: ...
315-316m: ...
317-318m: ...
319-320m: ...
321-322m: ...
323-324m: ...
325-326m: ...
327-328m: ...
329-330m: ...
331-332m: ...
333-334m: ...
335-336m: ...
337-338m: ...
339-340m: ...
341-342m: ...
343-344m: ...
345-346m: ...
347-348m: ...
349-350m: ...
351-352m: ...
353-354m: ...
355-356m: ...
357-358m: ...
359-360m: ...
361-362m: ...
363-364m: ...
365-366m: ...
367-368m: ...
369-370m: ...
371-372m: ...
373-374m: ...
375-376m: ...
377-378m: ...
379-380m: ...
381-382m: ...
383-384m: ...
385-386m: ...
387-388m: ...
389-390m: ...
391-392m: ...
393-394m: ...
395-396m: ...
397-398m: ...
399-400m: ...