

1/2000

GAMMA, CALIPER, SONIC



COMPANY PACIFIC OIL & GAS  
WELL FRIENDSHIP IP 1  
FIELD MACARTHUR BASIN  
PROVINCE/COUNTY NORTHERN TERRITORY  
COUNTRY/STATE AUSTRALIA

LOCATION  
PRVNC/CO. NORTHERN TERRITORY  
FIELD MACARTHUR BASIN  
WELL FRIENDSHIP IP 1  
COMPANY FRIENDSHIP 1

LOCATION  
LSD  
SIC  
TAP  
RCE

OTHER SERVICES  
DD1, NN1  
RS1, RR1

PERMANENT DATUM  
ELEVATION  
ABOVE PERMANENT DATUM

LOG MEASURED FROM  
DATE LOG MEASURED FROM

FINN NUMBER  
DEPTH-COCKER  
FIRST READING  
LAST READING  
CASING-DRILLER  
CASING-COCKER

DEPTH-COCKER  
FIRST READING  
LAST READING  
CASING-DRILLER  
CASING-COCKER

DEPTH-COCKER  
FIRST READING  
LAST READING  
CASING-DRILLER  
CASING-COCKER

DEPTH-COCKER  
FIRST READING  
LAST READING  
CASING-DRILLER  
CASING-COCKER

RUN NUMBER	BH SIZE	FROM	TO	SIZE	WEIGHT	FROM	TO
6	4.05"	CASING SHOE		4.4"			

EQUIPMENT	RUN 1	RUN 2	RUN 3	RUN 4
MDU	1948/340			

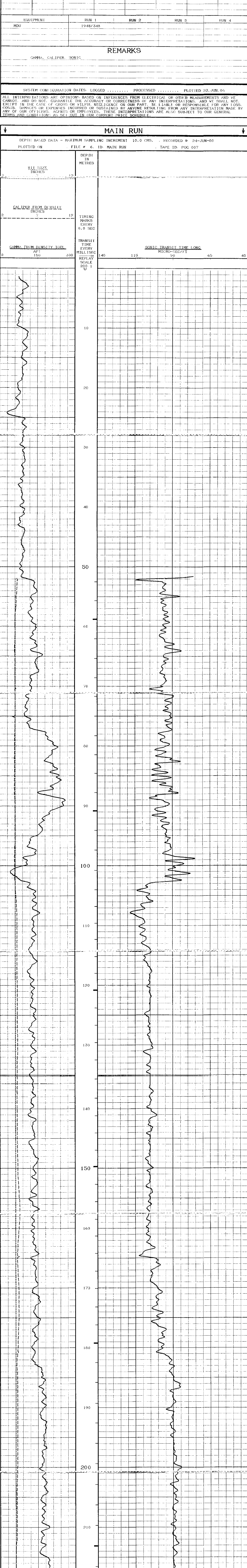
REMARKS  
GAMMA, CALIPER, SONIC

SYSTEM CONFIGURATION DATES: LOGGED ..... PROCESSED ..... PLOTTED 23 JUN 05

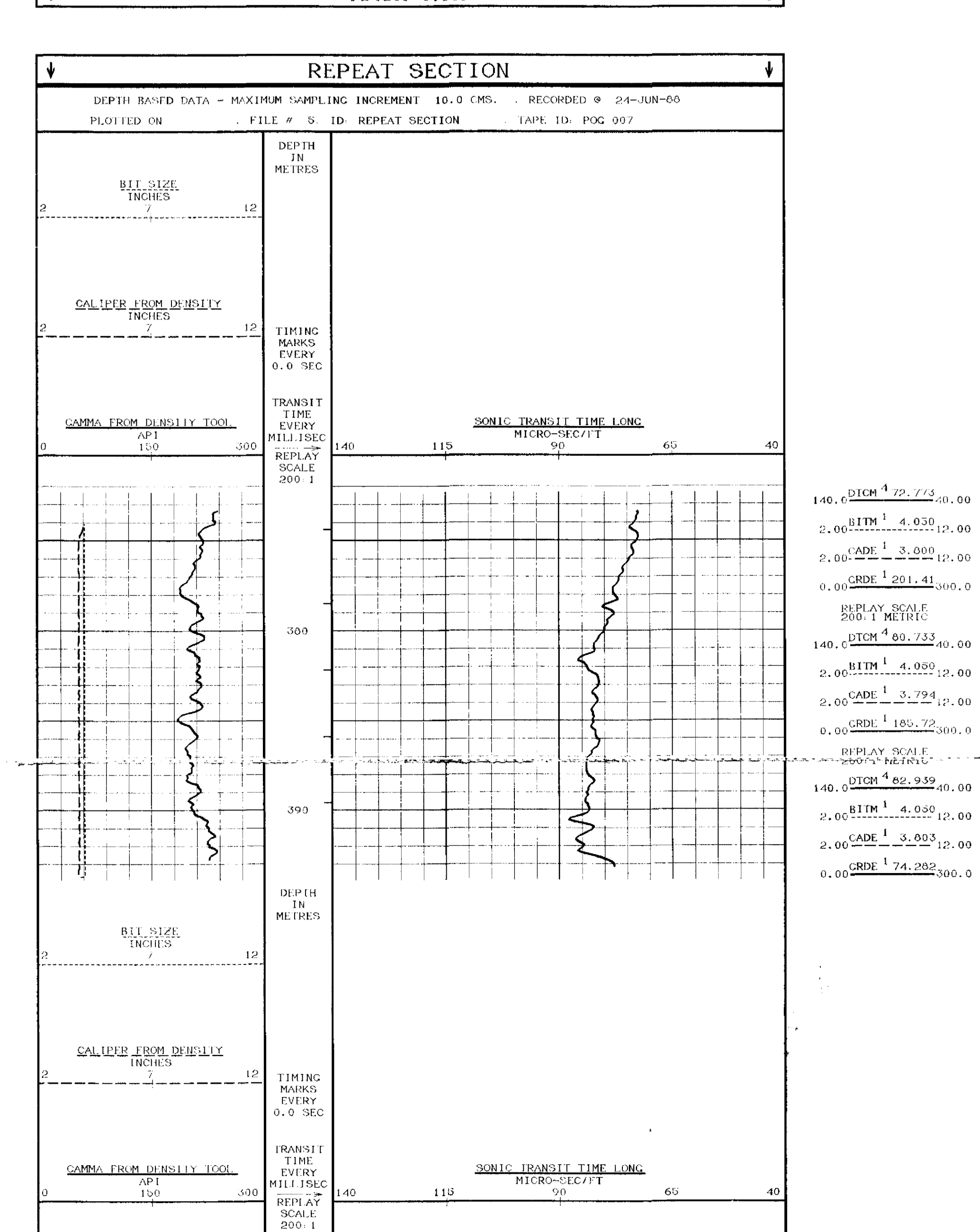
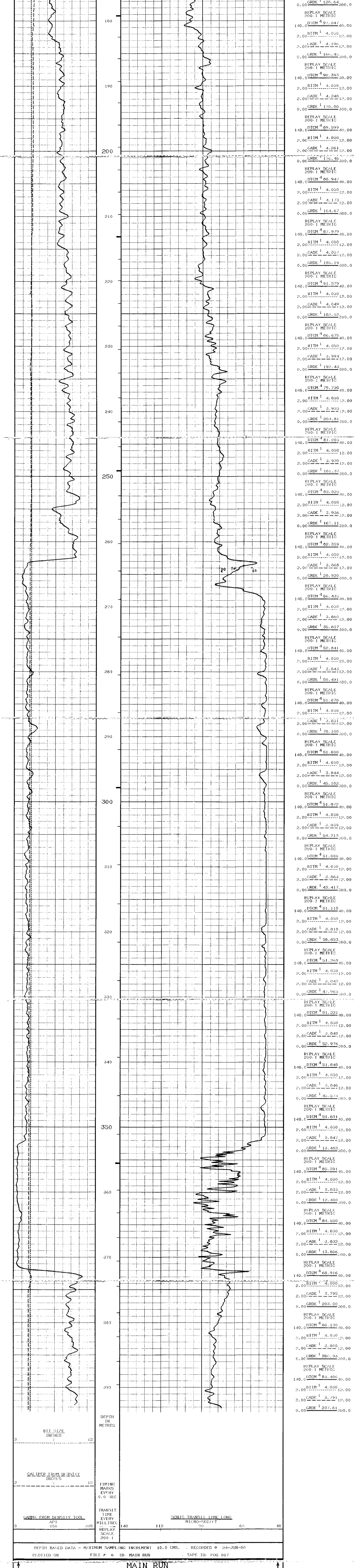
ALL INTERPRETATIONS ARE OPINIONS BASED ON INFERENCES FROM ELECTRICAL OR OTHER MEASUREMENTS AND WE CANNOT AND DO NOT GUARANTEE THE ACCURACY OR CORRECTNESS OF ANY INTERPRETATIONS. AND WE SHALL NOT BE LIABLE OR RESPONSIBLE FOR ANY LOSS, COSTS, DAMAGES OR EXPENSES INCURRED OR SUSTAINED BY ANYONE RESULTING FROM ANY INTERPRETATION MADE BY ANY OF OUR OFFICERS, AGENTS OR EMPLOYEES. THESE INTERPRETATIONS ARE ALSO SUBJECT TO OUR GENERAL TERMS AND CONDITIONS AS SET OUT IN OUR CURRENT PRICE SCHEDULE.

MAIN RUN

DEPTH BASED DATA - MAXIMUM SAMPLING INCREMENT 10.0 CMS. RECORDED @ 24-JUN-00  
FILE # 6. ID MAIN RUN TAPE ID: POC 007



DEPTH (M)	CRDE	BITM	CADE	DTCH
0.00	74.282	4.050	4.260	76.152
2.00	74.345	4.050	4.260	76.152
4.00	74.345	4.050	4.260	76.152
6.00	74.345	4.050	4.260	76.152
8.00	74.345	4.050	4.260	76.152
10.00	74.345	4.050	4.260	76.152
12.00	74.345	4.050	4.260	76.152
14.00	74.345	4.050	4.260	76.152
16.00	74.345	4.050	4.260	76.152
18.00	74.345	4.050	4.260	76.152
20.00	74.345	4.050	4.260	76.152
22.00	74.345	4.050	4.260	76.152
24.00	74.345	4.050	4.260	76.152
26.00	74.345	4.050	4.260	76.152
28.00	74.345	4.050	4.260	76.152
30.00	74.345	4.050	4.260	76.152
32.00	74.345	4.050	4.260	76.152
34.00	74.345	4.050	4.260	76.152
36.00	74.345	4.050	4.260	76.152
38.00	74.345	4.050	4.260	76.152
40.00	74.345	4.050	4.260	76.152
42.00	74.345	4.050	4.260	76.152
44.00	74.345	4.050	4.260	76.152
46.00	74.345	4.050	4.260	76.152
48.00	74.345	4.050	4.260	76.152
50.00	74.345	4.050	4.260	76.152
52.00	74.345	4.050	4.260	76.152
54.00	74.345	4.050	4.260	76.152
56.00	74.345	4.050	4.260	76.152
58.00	74.345	4.050	4.260	76.152
60.00	74.345	4.050	4.260	76.152
62.00	74.345	4.050	4.260	76.152
64.00	74.345	4.050	4.260	76.152
66.00	74.345	4.050	4.260	76.152
68.00	74.345	4.050	4.260	76.152
70.00	74.345	4.050	4.260	76.152
72.00	74.345	4.050	4.260	76.152
74.00	74.345	4.050	4.260	76.152
76.00	74.345	4.050	4.260	76.152
78.00	74.345	4.050	4.260	76.152
80.00	74.345	4.050	4.260	76.152
82.00	74.345	4.050	4.260	76.152
84.00	74.345	4.050	4.260	76.152
86.00	74.345	4.050	4.260	76.152
88.00	74.345	4.050	4.260	76.152
90.00	74.345	4.050	4.260	76.152
92.00	74.345	4.050	4.260	76.152
94.00	74.345	4.050	4.260	76.152
96.00	74.345	4.050	4.260	76.152
98.00	74.345	4.050	4.260	76.152
100.00	74.345	4.050	4.260	76.152
102.00	74.345	4.050	4.260	76.152
104.00	74.345	4.050	4.260	76.152
106.00	74.345	4.050	4.260	76.152
108.00	74.345	4.050	4.260	76.152
110.00	74.345	4.050	4.260	76.152
112.00	74.345	4.050	4.260	76.152
114.00	74.345	4.050	4.260	76.152
116.00	74.345	4.050	4.260	76.152
118.00	74.345	4.050	4.260	76.152
120.00	74.345	4.050	4.260	76.152
122.00	74.345	4.050	4.260	76.152
124.00	74.345	4.050	4.260	76.152
126.00	74.345	4.050	4.260	76.152
128.00	74.345	4.050	4.260	76.152
130.00	74.345	4.050	4.260	76.152
132.00	74.345	4.050	4.260	76.152
134.00	74.345	4.050	4.260	76.152
136.00	74.345	4.050	4.260	76.152
138.00	74.345	4.050	4.260	76.152
140.00	74.345	4.050	4.260	76.152
142.00	74.345	4.050	4.260	76.152
144.00	74.345	4.050	4.260	76.152
146.00	74.345	4.050	4.260	76.152
148.00	74.345	4.050	4.260	76.152
150.00	74.345	4.050	4.260	76.152
152.00	74.345	4.050	4.260	76.152
154.00	74.345	4.050	4.260	76.152
156.00	74.345	4.050	4.260	76.152
158.00	74.345	4.050	4.260	76.152
160.00	74.345	4.050	4.260	76.152
162.00	74.345	4.050	4.260	76.152
164.00	74.345	4.050	4.260	76.152
166.00	74.345	4.050	4.260	76.152
168.00	74.345	4.050	4.260	76.152
170.00	74.345	4.050	4.260	76.152
172.00	74.345	4.050	4.260	76.152
174.00	74.345	4.050	4.260	76.152
176.00	74.345	4.050	4.260	76.152
178.00	74.345	4.050	4.260	76.152
180.00	74.345	4.050	4.260	76.152
182.00	74.345	4.050	4.260	76.152
184.00	74.345	4.050	4.260	76.152
186.00	74.345	4.050	4.260	76.152
188.00	74.345	4.050	4.260	76.152
190.00	74.345	4.050	4.260	76.152
192.00	74.345	4.050	4.260	76.152
194.00	74.345	4.050	4.260	76.152
196.00	74.345	4.050	4.260	76.152
198.00	74.345	4.050	4.260	76.152
200.00	74.345	4.050	4.260	76.152



COMPANY PACIFIC OIL & GAS  
WELL FRIENDSHIP 1  
FIELD MACARTHUR BASIN  
PROVINCE/COUNTY NORTHERN TERRITORY  
COUNTRY/STATE AUSTRALIA