

ENCLOSURE 3

1/200



GAMMA, CALIPER, DENSITY,
NEUTRON POROSITY

COMPANY: PACIFIC OIL & GAS		LOCATION: PRVNC/CO. NORTHERN TERRITORY	
WELL: FRIENDSHIP 1		FIELD: MACARTHUR BASIN	
PROVINCE/COUNTY: NORTHERN TERRITORY		COUNTRY/STATE: AUSTRALIA	
OTHER SERVICES: MSI, RRI, RSI		ELEVATION: ABOVE PERMANENT DATUM	
DATE: 24-JUN-00		LOG MEASURED FROM: CL	
RPN NUMBER: 2		DEPTH-METRES: 0394.60	
DEPTH-ROLLER: 0394.70		FIRST READING: 0393.90	
LAST READING: 0091.50		CASING-ROLLER: 0091.47	
CASING-ROGGER: 0091.60		BIT SIZE: 4.05	
HOLE FLUID TYPE: OIL		DENS.: 27.15	
DENS.: 27.15		TEMP.: 141	
TEMP.: 141		PRESS.: 1.69	
PRESS.: 1.69		TIME SINCE CIRG: 00:00	
TIME SINCE CIRG: 00:00		EQUIPMENT/ASSE: W588, INR	
EQUIPMENT/ASSE: W588, INR		RECORDED BY: P. CRYSTAND	
RECORDED BY: P. CRYSTAND		ATTENDED BY:	

RUN NUMBER	BOREHOLE RECORD			CASING RECORD			
	BIT	FROM	TO	SIZE	WEIGHT	FROM	TO
2	4.05"	CASING SHOE	TD	4.4"			

EQUIPMENT	RUN 1	RUN 2	RUN 3	RUN 4
MDU	194B/506			

REMARKS

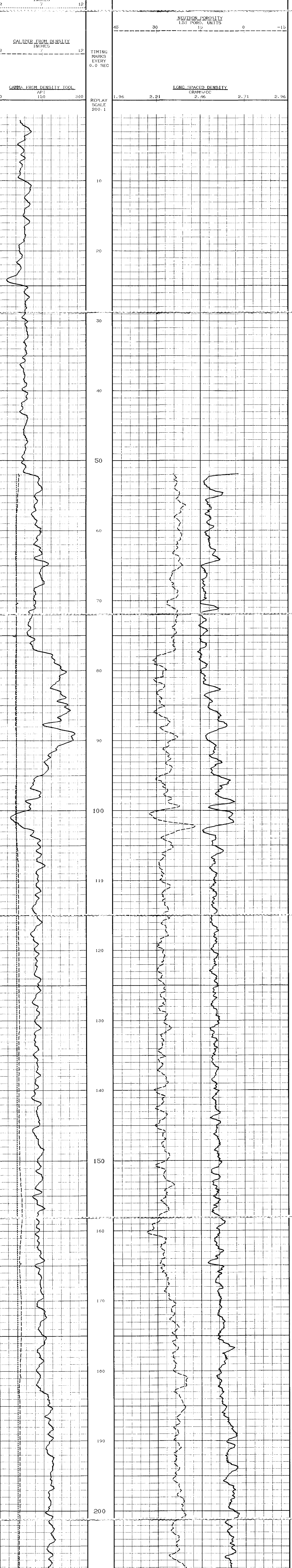
GAMMA, CALIPER, DENSITY, NEUTRON POROSITY

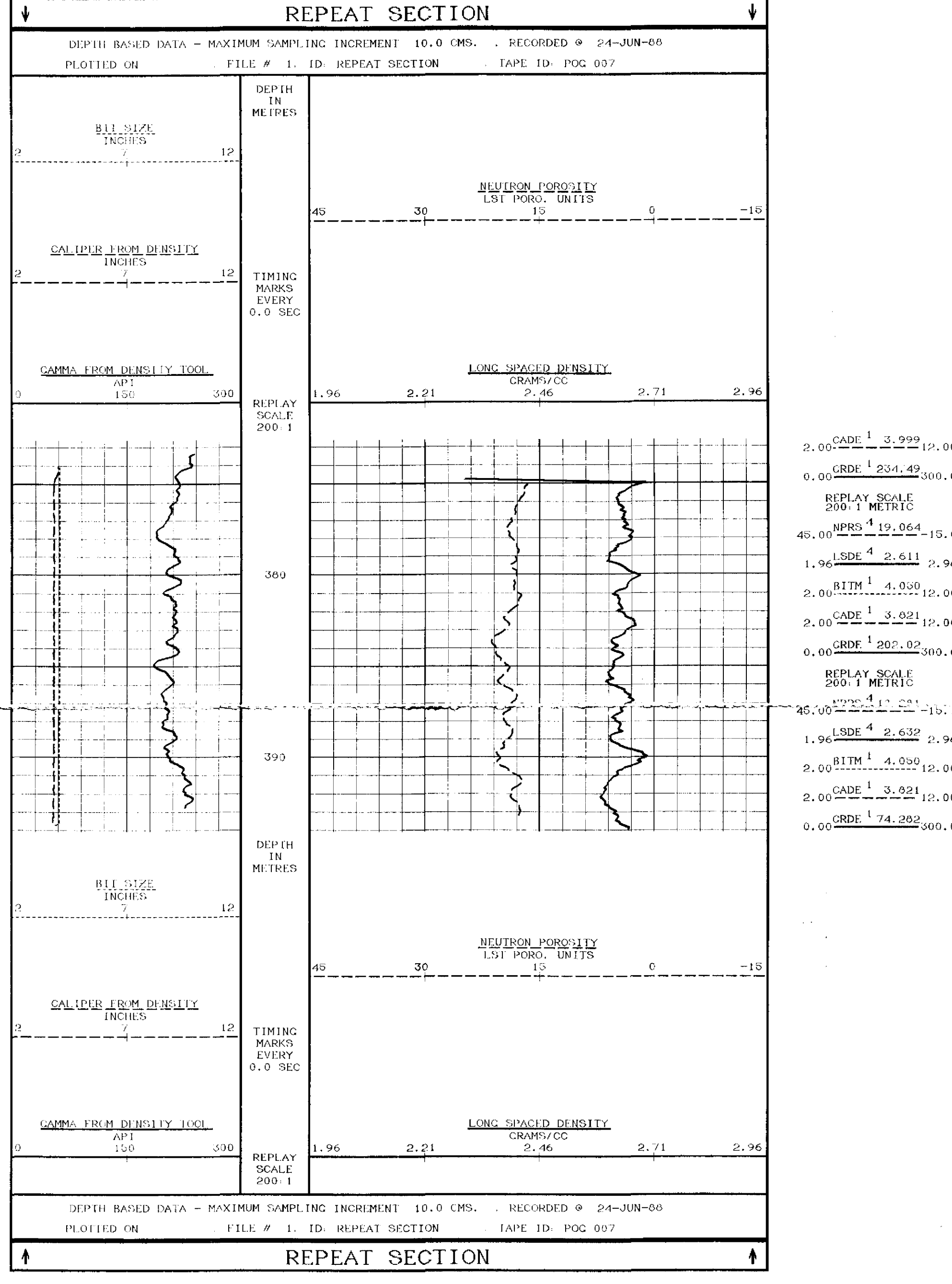
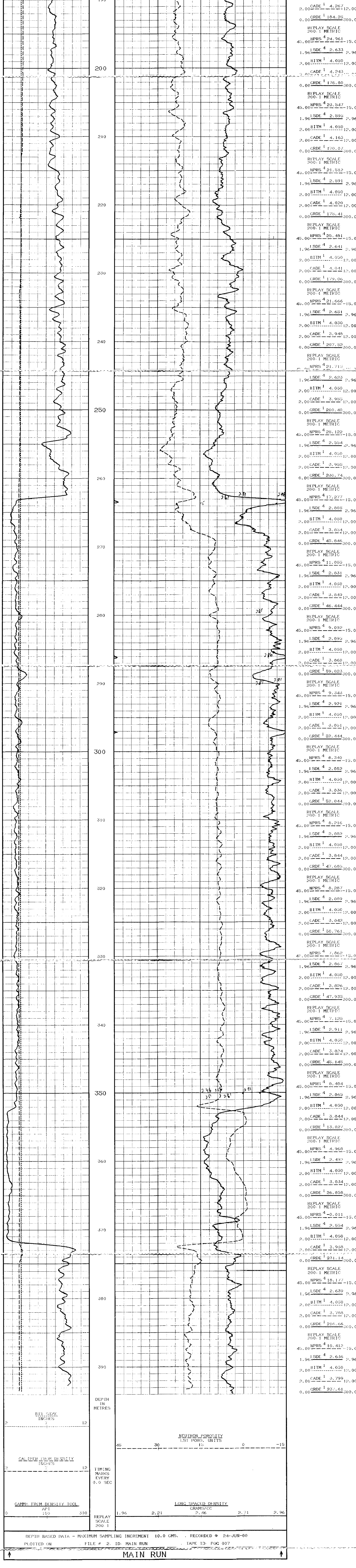
SYSTEM CONFIGURATION DATES: LOGGED PROCESSED PLOTTED 23-JUN-06

ALL INTERPRETATIONS ARE OPINIONS BASED ON INFERENCES FROM ELECTRICAL OR OTHER MEASUREMENTS AND WE CANNOT AND DO NOT GUARANTEE THE ACCURACY OR CORRECTNESS OF ANY INTERPRETATIONS AND WE SHALL NOT BE LIABLE OR RESPONSIBLE FOR ANY LOSS OF COSTS, DAMAGES OR EXPENSES INCURRED OR SUSTAINED BY ANYONE RESULTING FROM ANY INTERPRETATION MADE BY ANY OF OUR CUSTOMERS, AGENTS OR EMPLOYEES. THESE INTERPRETATIONS ARE ALSO SUBJECT TO OUR GENERAL TERMS AND CONDITIONS AS SET OUT IN OUR CURRENT PRICE SCHEDULE.

MAIN RUN

DEPTH BASED DATA - MAXIMUM SAMPLING INCREMENT 10.0 CMS. RECORDED @ 24-JUN-00
 PLOTTED ON FILE # 2, ID: MAIN RUN TAPE ID: POC 007





COMPANY PACIFIC OIL & GAS
WELL FRIENDSHIP 1
FIELD MACARTHUR BASIN
PROVINCE/COUNTRY NORTHERN TERRITORY
COUNTRY/STATE AUSTRALIA