

COMPOSITE WELL LOG  
EXOIL (N.S.W.) PTY. LTD.  
ERLDUNDA No. 1

PETROLEUM TENEMENT: O.P. 130      STATE: NORTHERN TERRITORY      4-MILE SHEET: G-53-1 KULGERA      BASIN: AMADEUS  
WELL STATUS: DRY & ABANDONED

LOCATION      Lat 25° 18' 36" S  
Long 133° 1' 48" E

ELEVATION      Ground 3350' a.s.l.  
K.B. 3435' a.s.l.

Date Spudded 20th June, 1965  
Date Drilling Stopped 20th July, 1965  
Date Rig off 20th July, 1965

Total Depth Driller 5463'  
Well 5457'

Hole Size inches From To  
13 3/4 surface 961'  
9 7/8 961' 1862'  
8 5/8 1862' 1959'  
7 7/8 1959' 5463'

Casing Size inches Wt Gr Depth Cmt Cmt'd to  
13 3/4 60 lb/ft Conductor 86 120 sacks Surface  
9 7/8 40.5 lb/ft H-40 961 340 sacks

Cement Plugs From To Sacks  
1 5000' 5200' 60  
2 5200' 5400' 250  
3 5400' 5457' 25

INDUCTION ELECTRICAL LOG  
AND GUARD LOG DATA

INDUCTION		GUARD	
RUN No	1	1	
Date	25.6.65	26.7.65	
First Reading	84	950	
Last Reading	915	5455	
Interval Measured	831	4489	
Casing Schlumberger	82	957	
Casing Driller	86	961	
Depth Reached	955	5444	
Bottom Driller	970	5450	
Mud Nature	WATER	GEL	
Density / Viscosity		8.9 / 34	
Mud Resistivity		55 @ 52°S	
Mud Resistivity BHT		156° F	
pH / Fluid Loss per 30min			
Origin of Sample			
Rmt			
Rmc			
Bit Size	13 3/4	9 7/8 @ 961'	
Casing Size	13 3/4	10 3/4	
Open Hole Time			
Track No	3222	3222	
Recorded by	MYERS	CARTER	
Witnessed	M. TAGGART	PERMBERTON	

RADIOMETRIC LOG DATA

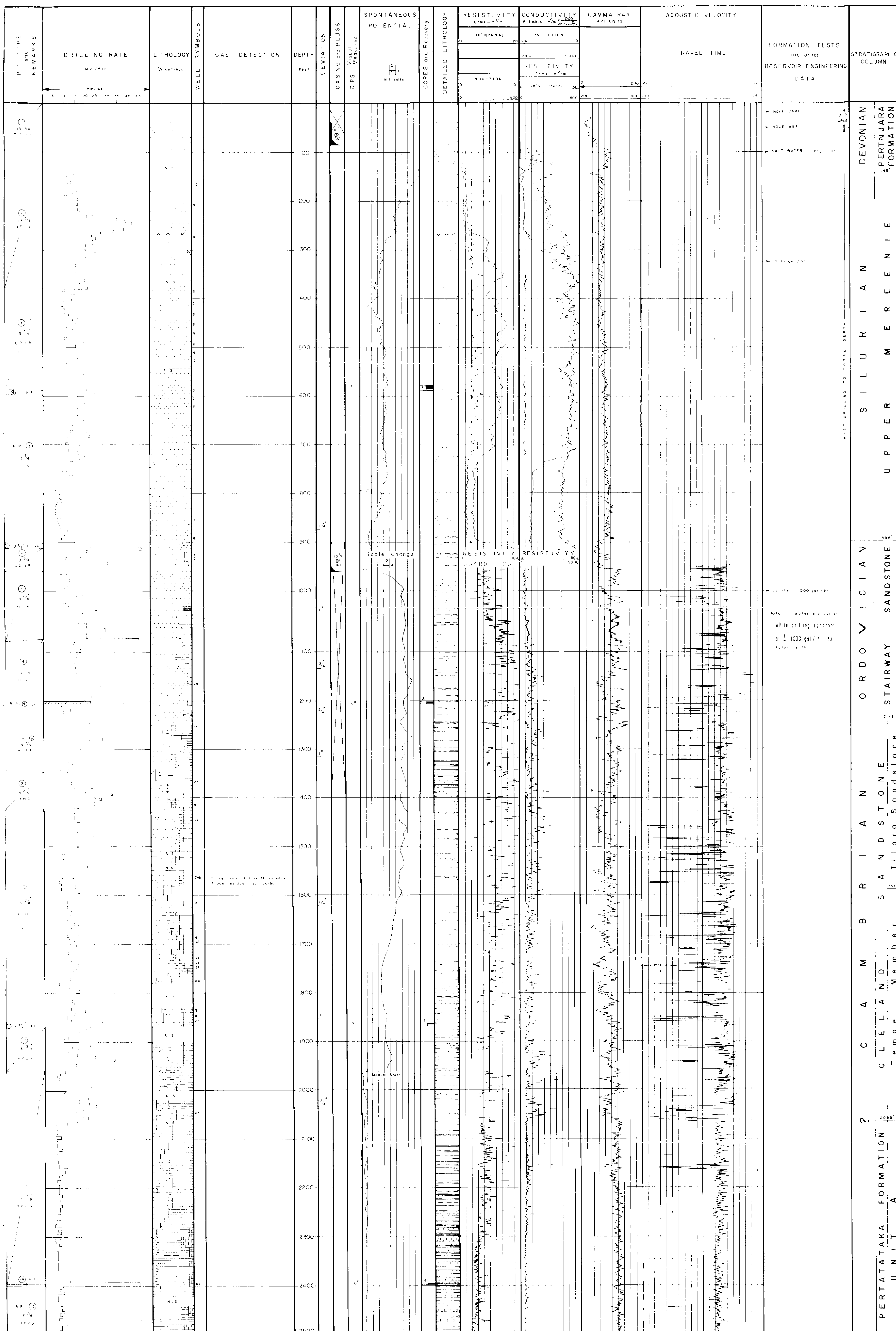
Type of Log		LAWMAY	
Run No	1		
Date	20.7.65		
Super Depth Driller	5450'		
Top Logged Interval	50'		
Bottom of Logged Interval	5422'		
Type of Fluid in Hole	SALT WATER GEL		
Fluid Level	Surface		
Maximum Recorded Temperature	56° F		
Neutron Source, Strength and Type			
Source Spacing - in			
Length of Measuring Device	24"		
O.D. of Instrument - in	3 5/8"		
Time Constant - Secs	1.5		
Logging Speed - ft/hr	40		
Statistical Variation	± 20 units		
Sensitivity Reference	REUNITE/INCH		
Recorded by	A. CARTER		
CASING RECORD		OPEN HOLE RECORD	
Run No	Size in Wt-lbs Interval - ft	Run No	Size in Wt-lbs Interval - ft
1	13 3/4 60 Surface 86	1	9 7/8 56 1862
2	10 3/4 40.5 Surface 961	2	8 5/8 1862 1959
			7 7/8 1959 5453

Acoustic Velocity 961' = 5435'  
Forker Caliper 961' = 5454'

Well Head Fitting Welded Steel Plate  
Drilled by Oil Drilling and Exploration Ltd.  
Logged by We ex  
Drilling Method Rotary Air & Mist  
Cemented by Oil Drilling & Exploration Ltd  
Mud Logging by  
Lithology by Stephens, V.H. M. Taggart, R. Pemberton

LITHOLOGIC REFERENCE

	Sandstone		Limestone	g - gypsum
	Siltstone		Dolomite	ca - calcareous, calcite
	Shale		Gypsum	gl - glauconite
	Conglomerate		Salt	py - pyrite
	Chert		Carbonaceous	



812/99.201

[illegible]