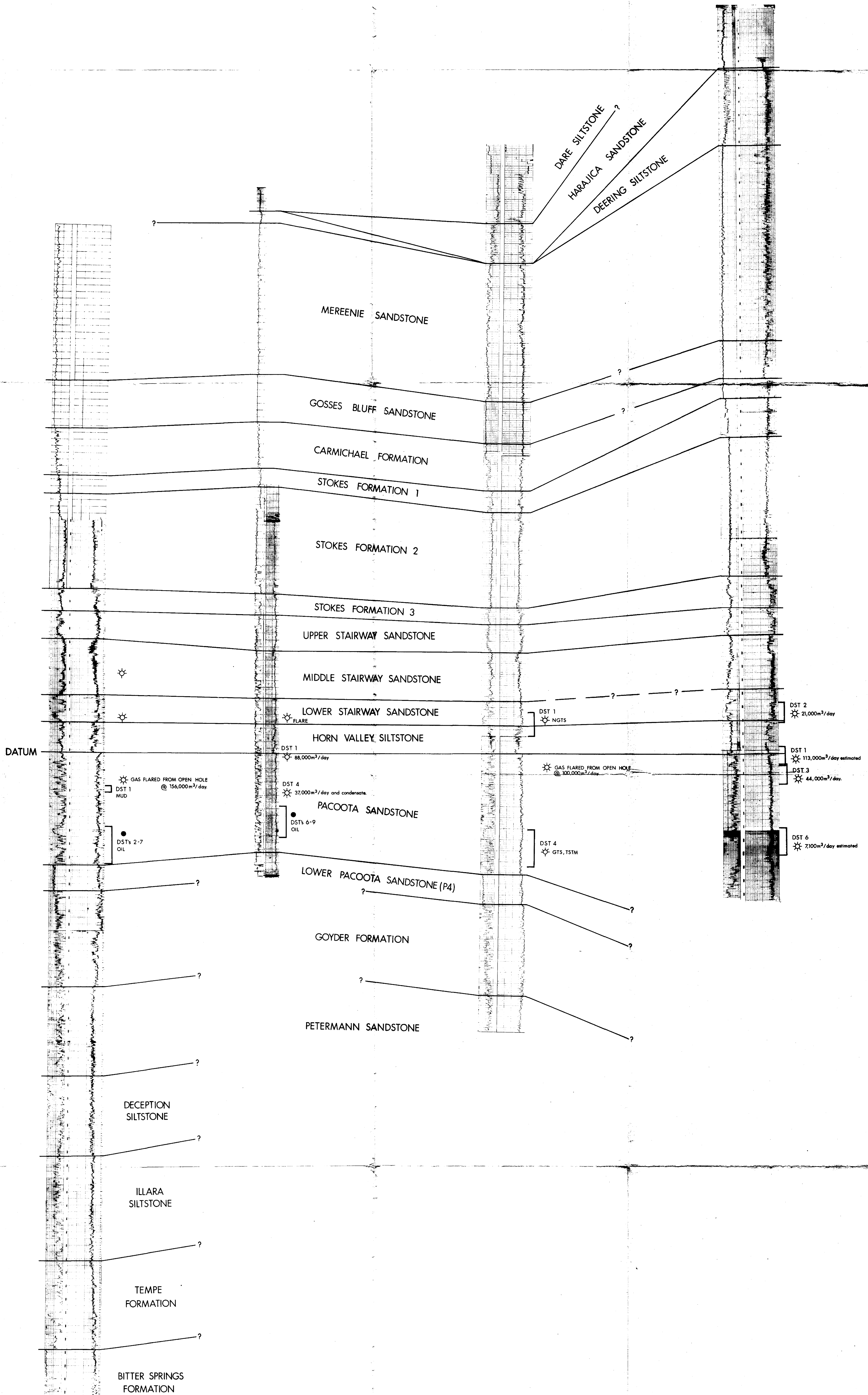


EAST MEREENIE - 4

EAST MEREENIE - 2

WEST WALKER - 1

PALM VALLEY - 1



*pp 25/18*

<b>PANCONTINENTAL PETROLEUM LIMITED</b>		
AMADEUS BASIN - NORTHERN TERRITORY OP 175		
<b>WELL CORRELATION SECTION</b>		
EAST MEREENIE - 4, EAST MEREENIE - 2, WEST WALKER - 1, PALM VALLEY - 1		
AUTHOR: J. D. G.	DRAWN: D. J. P.	PLAN NO: 3/221
DATE: 20th November '82		ENCLOSURE: 5