

OILMIN N.L.  
EAST MEREENIE # 4

29th June 1984



M0780538

**ONSHORE** **GEARHART AUSTRALIA**  
NORTHERN TERRITORY  
GEOLOGICAL SURVEY

DEPT. OF MINES & ENERGY  
DO NOT REMOVE



P01115



GEARHART PTY. LTD  
1/138 MUSGRAVE AVE.,  
WELLAND, S.A. 5007.

OILMIN N.L.

EAST MEREENIE # 4

OPERATIONS SCHEDULE

HOURS

REMARKS

29th. June 1984

1015 hrs.	Arrive on location with DDL logging unit. W.H.P. is 932 psig.
1140 hrs.	Rigged up, open well to lubricator, W.H.P. is 928 psig.
1345 hrs.	R.I.H. with H.P. tool no. 627 for static gradient 25 mins. lost due to waxed fuel filters.
1420 hrs.	Hang tool at 1000ft.
1531 hrs.	R.I.H. with H.P. tool, W.H.P. is 929 psig.
1536 hrs.	Hang tool at 2000ft.
1628 hrs.	R.I.H. with H.P. tool, W.H.P. is 931 psig.
1643 hrs.	Hang tool at 3000ft.
1753 hrs.	R.I.H. with H.P. tool, W.H.P. is 929 psig.
1802 hrs.	Hang tool at 4000ft.
1848 hrs.	R.I.H. with H.P. tool, W.H.P. is 929 psig.
1854 hrs.	Hang tool at 4200ft.
2007 hrs.	R.I.H. with H.P. tool, W.H.P. is 929 psig.
2011 hrs.	Hang tool at 4400ft.
2040 hrs.	R.I.H. with H.P. tool, W.H.P. is 929 psig.



**GEARHART AUSTRALIA**

GEARHART PTY. LTD  
1/138 MUSGRAVE AVE.,  
WELLAND, S.A. 5007.

OILMIN N.L.

EAST MEREENIE # 4

OPERATIONS SCHEDULE

HOURS

REMARKS

29th. June 1984

2043 hrs. Hang tool at 4500ft.

2104 hrs. R.I.H. with H.P. tool, W.H.P. is 929 psig.

2107 hrs. Hang tool at 4609ft.

2143 hrs. P.O.O.H. with H.P. tool, W.H.P. is 929 psig.  
Static gradient completed, remain rigged up  
on well o/night.

30th. June 1984

0730 hrs. Arrive on location, commence rigging down.

0830 hrs. Gearhart off location.



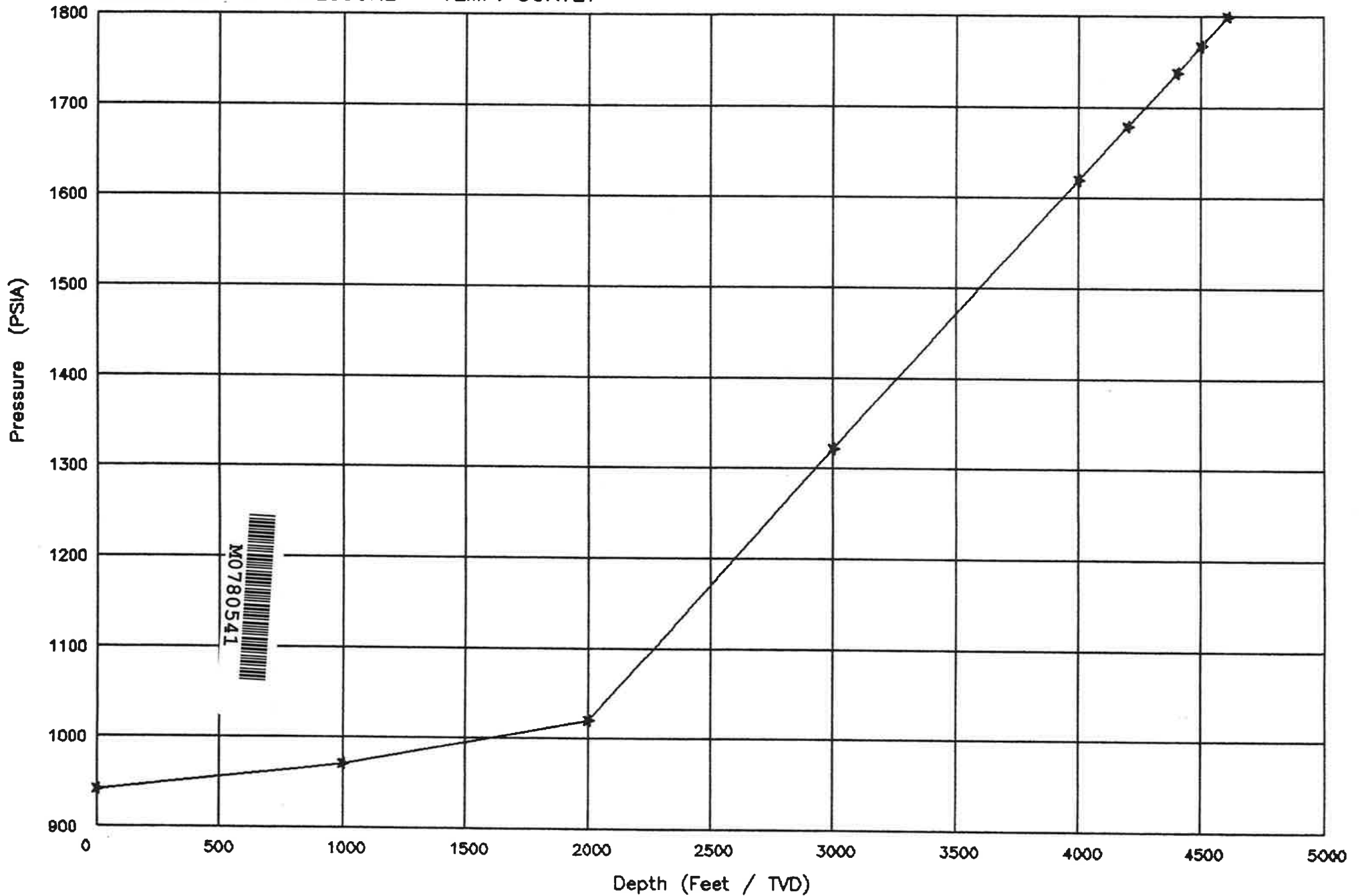
**GEARHART AUSTRALIA**

# STATIC GRADIENT

COMPANY : OILMIN N.L.  
WELL : EAST MEREENIE # 4  
Comments : HP PRESSURE - TEMP. SURVEY

Eq. Type: H.P.  
Gauge No: 627

From : 13:41:00 29/06/84  
To : 21:42:00 29/06/84



STATIC GRADIENT - PLOT DATA

COMPANY : OILMIN N.L.  
WELL : EAST MEREENIE # 4  
Comments : HP PRESSURE - TEMP. SURVEY

Eq. Type : H.P.  
Gauge # : 627  
Depth : TVD

Seq.#	Date	Time	Temp (Deg.F)	Depth (Feet )	Pressure (PSIA)	Gradient (PSIA/Feet )
1	29/06/84	13:41:00	+71.08	0.0	941.11	.000
2	29/06/84	15:31:00	+85.76	1,000.0	970.00	.029
3	29/06/84	16:38:00	+94.79	2,000.0	1,019.72	.050
4	29/06/84	17:23:00	+116.42	3,000.0	1,321.55	.302
5	29/06/84	18:48:00	+135.27	4,000.0	1,619.50	.298
6	29/06/84	19:22:00	+138.91	4,200.0	1,678.41	.295
7	29/06/84	20:40:00	+141.53	4,400.0	1,737.18	.294
8	29/06/84	21:03:00	+142.45	4,500.0	1,766.74	.296
9	29/06/84	21:42:00	+144.80	4,609.0	1,798.80	.294



M0780542

# PRESSURE vs TIME - (LINEAR)

COMPANY : OILMIN N.L.

Eq. Type: H.P.

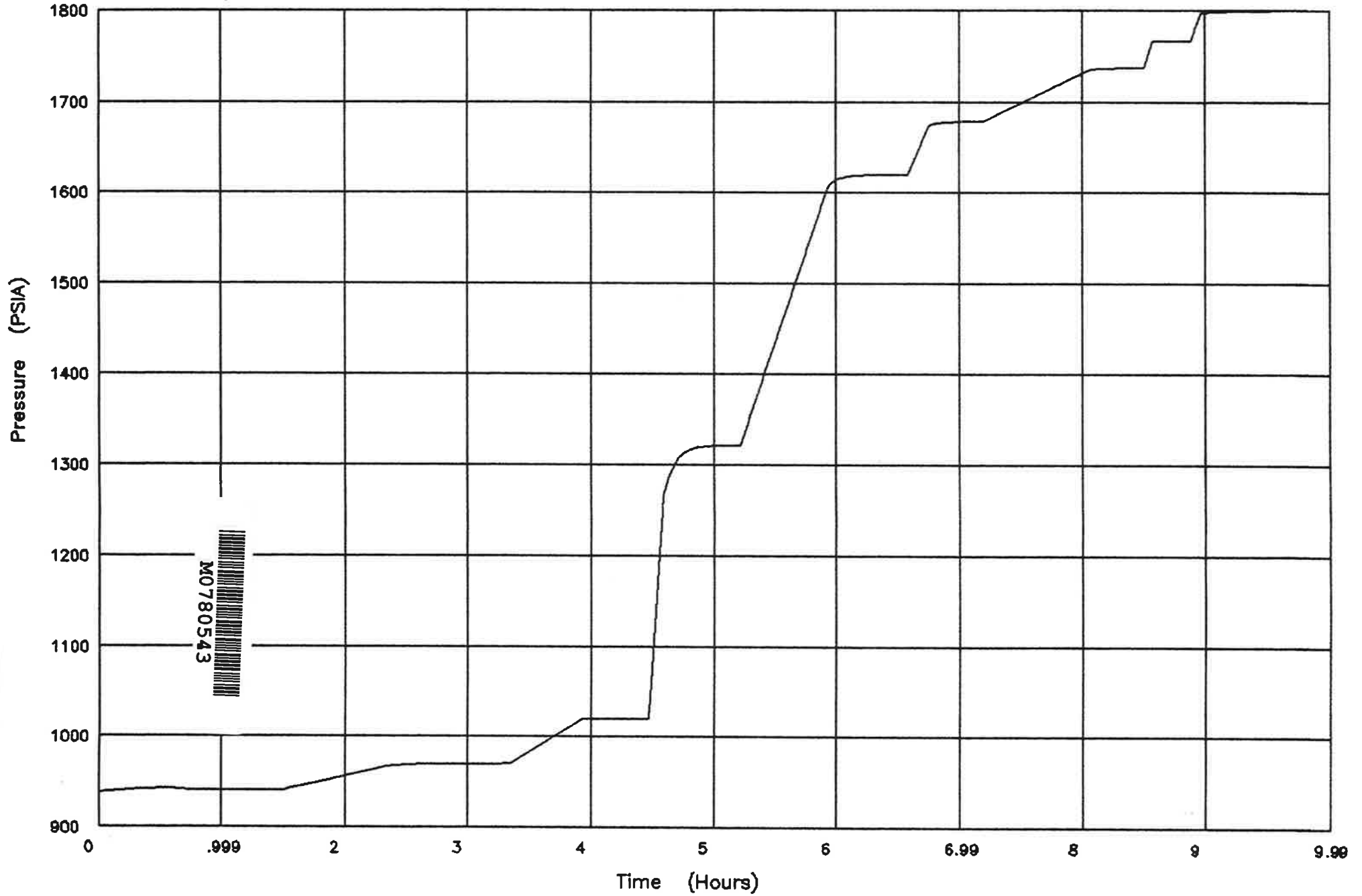
From : 12:10:00 29/06/84

WELL : EAST MEREENIE # 4

Gauge No: 627

To : 21:42:00 29/06/84

Comments : HP STATIC GRADIENT, PRESSURE - TEMP. SURVEY



**PRESSURE vs TIME - (LINEAR) PLOT DATA**

COMPANY : OILMIN N.L.

Eq. Type : H.P.

WELL : EAST MEREENIE # 4

Gauge # : 627

Comments : HP STATIC GRADIENT, PRESSURE - TEMP SURVEY



M0780544

Depth : TVD

Seq.#	Date	Time	dt	Pressure (PSIA)	Temp (Deg.F)	Depth (Feet )
1	29/06/84	12:10:00	0.0000	938.18	+68.2	0.0
2	29/06/84	12:15:00	0.0833	939.08	+68.2	0.0
3	29/06/84	12:20:00	0.1667	939.68	+68.5	0.0
4	29/06/84	12:25:00	0.2500	940.27	+68.6	0.0
5	29/06/84	12:30:00	0.3333	940.98	+68.7	0.0
6	29/06/84	12:35:00	0.4167	941.75	+68.4	0.0
7	29/06/84	12:40:00	0.5000	942.20	+68.4	0.0
8	29/06/84	12:45:00	0.5833	941.91	+68.5	0.0
9	29/06/84	12:50:00	0.6667	941.23	+68.8	0.0
10	29/06/84	12:55:00	0.7500	940.43	+69.3	0.0
11	29/06/84	13:00:00	0.8333	940.51	+69.3	0.0
12	29/06/84	13:05:00	0.9167	940.81	+69.6	0.0
13	29/06/84	13:10:00	1.0000	940.11	+70.0	0.0
14	29/06/84	13:15:00	1.0833	940.78	+70.1	0.0
15	29/06/84	13:20:00	1.1667	940.58	+70.4	0.0
16	29/06/84	13:25:00	1.2500	940.33	+70.6	0.0
17	29/06/84	13:30:00	1.3333	940.31	+70.9	0.0
18	29/06/84	13:34:00	1.4000	940.84	+71.0	0.0
19	29/06/84	13:35:00	1.4167	940.78	+71.1	0.0
20	29/06/84	13:37:00	1.4500	940.56	+71.3	0.0
21	29/06/84	13:38:00	1.4667	940.48	+71.3	0.0
22	29/06/84	13:39:00	1.4833	940.55	+71.3	0.0
23	29/06/84	13:40:00	1.5000	940.81	+71.2	0.0
24	29/06/84	13:41:00	1.5167	941.11	+71.1	0.0
25	29/06/84	14:25:40	2.2611	964.06	+85.0	1000.0
26	29/06/84	14:25:50	2.2639	964.20	+84.9	1000.0
27	29/06/84	14:26:00	2.2667	964.37	+84.9	1000.0
28	29/06/84	14:26:10	2.2694	964.50	+85.0	1000.0
29	29/06/84	14:26:20	2.2722	964.61	+85.0	1000.0
30	29/06/84	14:26:30	2.2750	964.72	+85.0	1000.0
31	29/06/84	14:26:40	2.2778	964.83	+85.0	1000.0
32	29/06/84	14:26:50	2.2806	964.94	+85.0	1000.0
33	29/06/84	14:27:00	2.2833	965.04	+85.0	1000.0
34	29/06/84	14:27:10	2.2861	965.14	+85.0	1000.0
35	29/06/84	14:27:20	2.2889	965.25	+85.0	1000.0
36	29/06/84	14:30:00	2.3333	966.49	+85.1	1000.0
37	29/06/84	14:40:00	2.5000	968.68	+85.3	1000.0
38	29/06/84	14:50:00	2.6667	969.39	+85.5	1000.0
39	29/06/84	14:52:00	2.7000	969.41	+85.5	1000.0
40	29/06/84	14:53:00	2.7167	969.51	+85.5	1000.0
41	29/06/84	14:54:00	2.7333	969.54	+85.5	1000.0
42	29/06/84	14:55:00	2.7500	969.57	+85.5	1000.0
43	29/06/84	14:56:00	2.7667	969.60	+85.5	1000.0
44	29/06/84	14:57:00	2.7833	969.64	+85.6	1000.0
45	29/06/84	14:58:00	2.8000	969.65	+85.6	1000.0
46	29/06/84	14:59:00	2.8167	969.68	+85.6	1000.0
47	29/06/84	15:00:00	2.8333	969.70	+85.6	1000.0
48	29/06/84	15:01:00	2.8500	969.72	+85.6	1000.0
49	29/06/84	15:02:00	2.8667	969.74	+85.6	1000.0
50	29/06/84	15:03:00	2.8833	969.76	+85.6	1000.0

**PRESSURE vs TIME - (LINEAR) PLOT DATA**

COMPANY : OILMIN N.L.  
 WELL : EAST MEREENIE # 4  
 Comments : HP STATIC GRADIENT, PRESSURE - TEMP SURVEY

Eq. Type : H.P.  
 Gauge # : 627



Depth : TVD

Seq.#	Date	Time	dt	Pressure (PSIA)	Temp (Deg.F)	Depth (Feet )
51	29/06/84	15:04:00	2.9000	969.77	+85.6	1000.0
52	29/06/84	15:05:00	2.9167	969.79	+85.6	1000.0
53	29/06/84	15:06:00	2.9333	969.80	+85.6	1000.0
54	29/06/84	15:07:00	2.9500	969.82	+85.6	1000.0
55	29/06/84	15:08:00	2.9667	969.83	+85.6	1000.0
56	29/06/84	15:09:00	2.9833	969.84	+85.7	1000.0
57	29/06/84	15:10:00	3.0000	969.85	+85.7	1000.0
58	29/06/84	15:11:00	3.0167	969.86	+85.7	1000.0
59	29/06/84	15:12:00	3.0333	969.87	+85.7	1000.0
60	29/06/84	15:13:00	3.0500	969.88	+85.7	1000.0
61	29/06/84	15:14:00	3.0667	969.90	+85.7	1000.0
62	29/06/84	15:15:00	3.0833	969.91	+85.7	1000.0
63	29/06/84	15:16:00	3.1000	969.92	+85.7	1000.0
64	29/06/84	15:17:00	3.1167	969.92	+85.7	1000.0
65	29/06/84	15:18:00	3.1333	969.93	+85.7	1000.0
66	29/06/84	15:19:00	3.1500	969.93	+85.7	1000.0
67	29/06/84	15:20:00	3.1667	969.94	+85.7	1000.0
68	29/06/84	15:21:00	3.1833	969.95	+85.7	1000.0
69	29/06/84	15:22:00	3.2000	969.95	+85.7	1000.0
70	29/06/84	15:23:00	3.2167	969.96	+85.7	1000.0
71	29/06/84	15:24:00	3.2333	969.97	+85.7	1000.0
72	29/06/84	15:25:00	3.2500	969.98	+85.7	1000.0
73	29/06/84	15:26:00	3.2667	969.98	+85.7	1000.0
74	29/06/84	15:27:00	3.2833	969.99	+85.8	1000.0
75	29/06/84	15:28:00	3.3000	969.99	+85.8	1000.0
76	29/06/84	15:29:00	3.3167	970.00	+85.8	1000.0
77	29/06/84	15:30:00	3.3333	970.00	+85.8	1000.0
78	29/06/84	15:31:00	3.3500	970.00	+85.8	1000.0
79	29/06/84	16:06:00	3.9333	1,019.51	+94.8	2000.0
80	29/06/84	16:07:00	3.9500	1,019.58	+94.8	2000.0
81	29/06/84	16:08:00	3.9667	1,019.58	+94.8	2000.0
82	29/06/84	16:09:00	3.9833	1,019.62	+94.8	2000.0
83	29/06/84	16:10:00	4.0000	1,019.65	+94.8	2000.0
84	29/06/84	16:11:00	4.0167	1,019.66	+94.8	2000.0
85	29/06/84	16:12:00	4.0333	1,019.70	+94.8	2000.0
86	29/06/84	16:13:00	4.0500	1,019.74	+94.9	2000.0
87	29/06/84	16:14:00	4.0667	1,019.72	+94.8	2000.0
88	29/06/84	16:15:00	4.0833	1,019.74	+94.8	2000.0
89	29/06/84	16:16:00	4.1000	1,019.71	+94.8	2000.0
90	29/06/84	16:17:00	4.1167	1,019.70	+94.8	2000.0
91	29/06/84	16:18:00	4.1333	1,019.70	+94.8	2000.0
92	29/06/84	16:19:00	4.1500	1,019.72	+94.8	2000.0
93	29/06/84	16:20:00	4.1667	1,019.74	+94.8	2000.0
94	29/06/84	16:21:00	4.1833	1,019.76	+94.8	2000.0
95	29/06/84	16:22:00	4.2000	1,019.78	+94.8	2000.0
96	29/06/84	16:23:00	4.2167	1,019.77	+94.8	2000.0
97	29/06/84	16:24:00	4.2333	1,019.75	+94.8	2000.0
98	29/06/84	16:25:00	4.2500	1,019.77	+94.8	2000.0
99	29/06/84	16:26:00	4.2667	1,019.75	+94.8	2000.0
100	29/06/84	16:27:00	4.2833	1,019.75	+94.8	2000.0



**PRESSURE vs TIME - (LINEAR) PLOT DATA**

COMPANY : OILMIN N.L.

Eq. Type : H.P.

WELL : EAST MEREENIE # 4

Gauge # : 627



M0780546

Comments : HP STATIC GRADIENT, PRESSURE - TEMP SURVEY

Depth : TVD

Seq.#	Date	Time	dt	Pressure (PSIA)	Temp (Deg.F)	Depth (Feet)
101	29/06/84	16:28:00	4.3000	1,019.75	+94.8	2000.0
102	29/06/84	16:29:00	4.3167	1,019.72	+94.8	2000.0
103	29/06/84	16:30:00	4.3333	1,019.72	+94.8	2000.0
104	29/06/84	16:31:00	4.3500	1,019.75	+94.8	2000.0
105	29/06/84	16:32:00	4.3667	1,019.73	+94.8	2000.0
106	29/06/84	16:33:00	4.3833	1,019.71	+94.8	2000.0
107	29/06/84	16:34:00	4.4000	1,019.71	+94.8	2000.0
108	29/06/84	16:35:00	4.4167	1,019.71	+94.8	2000.0
109	29/06/84	16:36:00	4.4333	1,019.72	+94.8	2000.0
110	29/06/84	16:37:00	4.4500	1,019.74	+94.8	2000.0
111	29/06/84	16:38:00	4.4667	1,019.72	+94.8	2000.0
112	29/06/84	16:45:00	4.5833	1,266.37	+115.5	3000.0
113	29/06/84	16:46:00	4.6000	1,273.73	+115.5	3000.0
114	29/06/84	16:47:00	4.6167	1,281.52	+115.7	3000.0
115	29/06/84	16:48:00	4.6333	1,288.11	+115.8	3000.0
116	29/06/84	16:50:00	4.6667	1,298.56	+116.0	3000.0
117	29/06/84	16:51:00	4.6833	1,302.45	+116.0	3000.0
118	29/06/84	16:52:00	4.7000	1,306.29	+116.1	3000.0
119	29/06/84	16:53:00	4.7167	1,308.93	+116.1	3000.0
120	29/06/84	16:54:00	4.7333	1,311.13	+116.2	3000.0
121	29/06/84	16:55:00	4.7500	1,312.93	+116.2	3000.0
122	29/06/84	16:56:00	4.7667	1,314.41	+116.3	3000.0
123	29/06/84	16:57:00	4.7833	1,315.63	+116.3	3000.0
124	29/06/84	16:58:00	4.8000	1,316.65	+116.3	3000.0
125	29/06/84	16:59:00	4.8167	1,317.37	+116.3	3000.0
126	29/06/84	17:00:00	4.8333	1,318.20	+116.4	3000.0
127	29/06/84	17:01:00	4.8500	1,318.79	+116.4	3000.0
128	29/06/84	17:02:00	4.8667	1,319.27	+116.4	3000.0
129	29/06/84	17:03:00	4.8833	1,319.65	+116.4	3000.0
130	29/06/84	17:04:00	4.9000	1,319.99	+116.4	3000.0
131	29/06/84	17:05:00	4.9167	1,320.27	+116.4	3000.0
132	29/06/84	17:06:00	4.9333	1,320.52	+116.4	3000.0
133	29/06/84	17:07:00	4.9500	1,320.71	+116.4	3000.0
134	29/06/84	17:08:00	4.9667	1,320.87	+116.4	3000.0
135	29/06/84	17:09:00	4.9833	1,321.01	+116.4	3000.0
136	29/06/84	17:10:00	5.0000	1,321.13	+116.4	3000.0
137	29/06/84	17:11:00	5.0167	1,321.21	+116.4	3000.0
138	29/06/84	17:12:00	5.0333	1,321.29	+116.4	3000.0
139	29/06/84	17:13:00	5.0500	1,321.33	+116.4	3000.0
140	29/06/84	17:14:00	5.0667	1,321.38	+116.4	3000.0
141	29/06/84	17:15:00	5.0833	1,321.43	+116.4	3000.0
142	29/06/84	17:16:00	5.1000	1,321.47	+116.4	3000.0
143	29/06/84	17:17:00	5.1167	1,321.50	+116.4	3000.0
144	29/06/84	17:18:00	5.1333	1,321.53	+116.4	3000.0
145	29/06/84	17:19:00	5.1500	1,321.54	+116.4	3000.0
146	29/06/84	17:20:00	5.1667	1,321.55	+116.4	3000.0
147	29/06/84	17:21:00	5.1833	1,321.55	+116.4	3000.0
148	29/06/84	17:22:00	5.2000	1,321.56	+116.4	3000.0
149	29/06/84	17:23:00	5.2167	1,321.55	+116.4	3000.0
150	29/06/84	18:06:00	5.9333	1,606.79	+134.9	4000.0

**PRESSURE vs TIME - (LINEAR) PLOT DATA**

COMPANY : OILMIN N.L. Eq. Type : H.P.  
 WELL : EAST MEREENIE # 4 Gauge # : 627  
 Comments : HP STATIC GRADIENT, PRESSURE - TEMP SURVEY  
 Depth : TVD



Seq.#	Date	Time	dt	Pressure (PSIA)	Temp (Deg.F)	Depth (Feet)
151	29/06/84	18:07:00	5.9500	1,609.16	+134.9	4000.0
152	29/06/84	18:08:00	5.9667	1,611.07	+135.0	4000.0
153	29/06/84	18:09:00	5.9833	1,612.64	+135.1	4000.0
154	29/06/84	18:10:00	6.0000	1,613.90	+135.1	4000.0
155	29/06/84	18:11:00	6.0167	1,614.92	+135.1	4000.0
156	29/06/84	18:12:00	6.0333	1,615.75	+135.1	4000.0
157	29/06/84	18:13:00	6.0500	1,616.44	+135.2	4000.0
158	29/06/84	18:14:00	6.0667	1,616.99	+135.2	4000.0
159	29/06/84	18:15:00	6.0833	1,617.45	+135.2	4000.0
160	29/06/84	18:16:00	6.1000	1,617.82	+135.2	4000.0
161	29/06/84	18:17:00	6.1167	1,618.13	+135.2	4000.0
162	29/06/84	18:18:00	6.1333	1,618.37	+135.2	4000.0
163	29/06/84	18:19:00	6.1500	1,618.57	+135.2	4000.0
164	29/06/84	18:20:00	6.1667	1,618.75	+135.3	4000.0
165	29/06/84	18:21:00	6.1833	1,618.87	+135.3	4000.0
166	29/06/84	18:22:00	6.2000	1,618.99	+135.3	4000.0
167	29/06/84	18:23:00	6.2167	1,619.09	+135.3	4000.0
168	29/06/84	18:24:00	6.2333	1,619.16	+135.3	4000.0
169	29/06/84	18:25:00	6.2500	1,619.22	+135.3	4000.0
170	29/06/84	18:26:00	6.2667	1,619.26	+135.3	4000.0
171	29/06/84	18:27:00	6.2833	1,619.30	+135.3	4000.0
172	29/06/84	18:28:00	6.3000	1,619.32	+135.3	4000.0
173	29/06/84	18:29:00	6.3167	1,619.34	+135.3	4000.0
174	29/06/84	18:30:00	6.3333	1,619.36	+135.3	4000.0
175	29/06/84	18:31:00	6.3500	1,619.37	+135.3	4000.0
176	29/06/84	18:32:00	6.3667	1,619.39	+135.3	4000.0
177	29/06/84	18:33:00	6.3833	1,619.39	+135.3	4000.0
178	29/06/84	18:34:00	6.4000	1,619.41	+135.3	4000.0
179	29/06/84	18:35:00	6.4167	1,619.43	+135.3	4000.0
180	29/06/84	18:36:00	6.4333	1,619.43	+135.3	4000.0
181	29/06/84	18:37:00	6.4500	1,619.44	+135.3	4000.0
182	29/06/84	18:38:00	6.4667	1,619.45	+135.3	4000.0
183	29/06/84	18:39:00	6.4833	1,619.47	+135.3	4000.0
184	29/06/84	18:40:00	6.5000	1,619.49	+135.3	4000.0
185	29/06/84	18:41:00	6.5167	1,619.50	+135.3	4000.0
186	29/06/84	18:42:00	6.5333	1,619.54	+135.3	4000.0
187	29/06/84	18:43:00	6.5500	1,619.54	+135.3	4000.0
188	29/06/84	18:44:00	6.5667	1,619.54	+135.3	4000.0
189	29/06/84	18:45:00	6.5833	1,619.54	+135.3	4000.0
190	29/06/84	18:55:00	6.7500	1,674.04	+139.6	4200.0
191	29/06/84	18:56:00	6.7667	1,674.97	+139.7	4200.0
192	29/06/84	18:57:00	6.7833	1,675.47	+139.7	4200.0
193	29/06/84	18:58:00	6.8000	1,675.92	+139.7	4200.0
194	29/06/84	18:59:00	6.8167	1,676.33	+139.7	4200.0
195	29/06/84	19:00:00	6.8333	1,676.69	+139.6	4200.0
196	29/06/84	19:01:00	6.8500	1,676.97	+139.5	4200.0
197	29/06/84	19:02:00	6.8667	1,677.22	+139.2	4200.0
198	29/06/84	19:03:00	6.8833	1,677.45	+139.1	4200.0
199	29/06/84	19:04:00	6.9000	1,677.63	+139.1	4200.0
200	29/06/84	19:05:00	6.9167	1,677.78	+139.1	4200.0

**PRESSURE vs TIME - (LINEAR) PLOT DATA**

COMPANY : OILMIN N.L. Eq. Type : H.P.  
 WELL : EAST MEREENIE # 4 Gauge # : 627  
 Comments : HP STATIC GRADIENT, PRESSURE - TEMP SURVEY  
 Depth : TVD



Seq.#	Date	Time	dt	Pressure (PSIA)	Temp (Deg.F)	Depth (Feet)
201	29/06/84	19:06:00	6.9333	1,677.90	+139.1	4200.0
202	29/06/84	19:07:00	6.9500	1,678.00	+139.1	4200.0
203	29/06/84	19:08:00	6.9667	1,678.08	+139.1	4200.0
204	29/06/84	19:09:00	6.9833	1,678.14	+139.1	4200.0
205	29/06/84	19:10:00	7.0000	1,678.20	+139.0	4200.0
206	29/06/84	19:11:00	7.0167	1,678.26	+139.0	4200.0
207	29/06/84	19:12:00	7.0333	1,678.29	+139.0	4200.0
208	29/06/84	19:13:00	7.0500	1,678.32	+138.9	4200.0
209	29/06/84	19:14:00	7.0667	1,678.34	+138.9	4200.0
210	29/06/84	19:15:00	7.0833	1,678.36	+138.9	4200.0
211	29/06/84	19:16:00	7.1000	1,678.37	+138.9	4200.0
212	29/06/84	19:17:00	7.1167	1,678.38	+138.9	4200.0
213	29/06/84	19:18:00	7.1333	1,678.39	+138.9	4200.0
214	29/06/84	19:19:00	7.1500	1,678.39	+138.9	4200.0
215	29/06/84	19:20:00	7.1667	1,678.41	+138.9	4200.0
216	29/06/84	19:21:00	7.1833	1,678.41	+138.9	4200.0
217	29/06/84	19:22:00	7.2000	1,678.41	+138.9	4200.0
218	29/06/84	20:13:00	8.0500	1,735.19	+141.3	4400.0
219	29/06/84	20:14:00	8.0667	1,735.55	+141.4	4400.0
220	29/06/84	20:15:00	8.0833	1,735.80	+141.4	4400.0
221	29/06/84	20:16:00	8.1000	1,736.01	+141.4	4400.0
222	29/06/84	20:17:00	8.1167	1,736.19	+141.4	4400.0
223	29/06/84	20:18:00	8.1333	1,736.35	+141.5	4400.0
224	29/06/84	20:19:00	8.1500	1,736.49	+141.5	4400.0
225	29/06/84	20:20:00	8.1667	1,736.60	+141.5	4400.0
226	29/06/84	20:21:00	8.1833	1,736.71	+141.5	4400.0
227	29/06/84	20:22:00	8.2000	1,736.79	+141.5	4400.0
228	29/06/84	20:23:00	8.2167	1,736.87	+141.5	4400.0
229	29/06/84	20:24:00	8.2333	1,736.93	+141.5	4400.0
230	29/06/84	20:25:00	8.2500	1,736.98	+141.5	4400.0
231	29/06/84	20:26:00	8.2667	1,737.02	+141.5	4400.0
232	29/06/84	20:27:00	8.2833	1,737.05	+141.5	4400.0
233	29/06/84	20:28:00	8.3000	1,737.07	+141.5	4400.0
234	29/06/84	20:29:00	8.3167	1,737.10	+141.5	4400.0
235	29/06/84	20:30:00	8.3333	1,737.12	+141.5	4400.0
236	29/06/84	20:31:00	8.3500	1,737.13	+141.5	4400.0
237	29/06/84	20:32:00	8.3667	1,737.15	+141.5	4400.0
238	29/06/84	20:33:00	8.3833	1,737.16	+141.5	4400.0
239	29/06/84	20:34:00	8.4000	1,737.17	+141.5	4400.0
240	29/06/84	20:35:00	8.4167	1,737.18	+141.5	4400.0
241	29/06/84	20:36:00	8.4333	1,737.18	+141.5	4400.0
242	29/06/84	20:37:00	8.4500	1,737.19	+141.5	4400.0
243	29/06/84	20:38:00	8.4667	1,737.18	+141.5	4400.0
244	29/06/84	20:39:00	8.4833	1,737.19	+141.5	4400.0
245	29/06/84	20:40:00	8.5000	1,737.18	+141.5	4400.0
246	29/06/84	20:44:00	8.5667	1,765.89	+142.4	4500.0
247	29/06/84	20:45:00	8.5833	1,766.15	+142.4	4500.0
248	29/06/84	20:46:00	8.6000	1,766.24	+142.4	4500.0
249	29/06/84	20:47:00	8.6167	1,766.31	+142.4	4500.0
250	29/06/84	20:48:00	8.6333	1,766.37	+142.4	4500.0

**PRESSURE vs TIME - (LINEAR) PLOT DATA**

COMPANY : OILMIN N.L.

Eq. Type : H.P.

WELL : EAST MEREENIE # 4

Gauge # : 627



Comments : HP STATIC GRADIENT, PRESSURE - TEMP SURVEY

Depth : TVD

Seq.#	Date	Time	dt	Pressure (PSIA)	Temp (Deg.F)	Depth (Feet)
251	29/06/84	20:49:00	8.6500	1,766.44	+142.4	4500.0
252	29/06/84	20:50:00	8.6667	1,766.50	+142.4	4500.0
253	29/06/84	20:51:00	8.6833	1,766.55	+142.4	4500.0
254	29/06/84	20:52:00	8.7000	1,766.58	+142.4	4500.0
255	29/06/84	20:53:00	8.7167	1,766.63	+142.4	4500.0
256	29/06/84	20:54:00	8.7333	1,766.64	+142.4	4500.0
257	29/06/84	20:55:00	8.7500	1,766.67	+142.4	4500.0
258	29/06/84	20:56:00	8.7667	1,766.68	+142.4	4500.0
259	29/06/84	20:57:00	8.7833	1,766.70	+142.4	4500.0
260	29/06/84	20:58:00	8.8000	1,766.71	+142.4	4500.0
261	29/06/84	20:59:00	8.8167	1,766.72	+142.4	4500.0
262	29/06/84	21:00:00	8.8333	1,766.74	+142.4	4500.0
263	29/06/84	21:01:00	8.8500	1,766.73	+142.4	4500.0
264	29/06/84	21:02:00	8.8667	1,766.74	+142.4	4500.0
265	29/06/84	21:03:00	8.8833	1,766.74	+142.4	4500.0
266	29/06/84	21:08:00	8.9667	1,797.07	+144.6	4609.0
267	29/06/84	21:09:00	8.9833	1,797.31	+144.6	4609.0
268	29/06/84	21:10:00	9.0000	1,797.56	+144.6	4609.0
269	29/06/84	21:11:00	9.0167	1,797.63	+144.7	4609.0
270	29/06/84	21:12:00	9.0333	1,797.82	+144.7	4609.0
271	29/06/84	21:13:00	9.0500	1,797.97	+144.7	4609.0
272	29/06/84	21:14:00	9.0667	1,798.09	+144.8	4609.0
273	29/06/84	21:15:00	9.0833	1,798.17	+144.8	4609.0
274	29/06/84	21:16:00	9.1000	1,798.26	+144.8	4609.0
275	29/06/84	21:17:00	9.1167	1,798.39	+144.8	4609.0
276	29/06/84	21:18:00	9.1333	1,798.43	+144.8	4609.0
277	29/06/84	21:19:00	9.1500	1,798.51	+144.8	4609.0
278	29/06/84	21:20:00	9.1667	1,798.56	+144.8	4609.0
279	29/06/84	21:21:00	9.1833	1,798.61	+144.8	4609.0
280	29/06/84	21:22:00	9.2000	1,798.63	+144.8	4609.0
281	29/06/84	21:23:00	9.2167	1,798.66	+144.8	4609.0
282	29/06/84	21:24:00	9.2333	1,798.70	+144.8	4609.0
283	29/06/84	21:25:00	9.2500	1,798.73	+144.8	4609.0
284	29/06/84	21:26:00	9.2667	1,798.73	+144.8	4609.0
285	29/06/84	21:27:00	9.2833	1,798.75	+144.8	4609.0
286	29/06/84	21:28:00	9.3000	1,798.78	+144.8	4609.0
287	29/06/84	21:29:00	9.3167	1,798.77	+144.8	4609.0
288	29/06/84	21:30:00	9.3333	1,798.77	+144.8	4609.0
289	29/06/84	21:31:00	9.3500	1,798.75	+144.8	4609.0
290	29/06/84	21:32:00	9.3667	1,798.79	+144.8	4609.0
291	29/06/84	21:33:00	9.3833	1,798.80	+144.8	4609.0
292	29/06/84	21:34:00	9.4000	1,798.80	+144.8	4609.0
293	29/06/84	21:35:00	9.4167	1,798.79	+144.8	4609.0
294	29/06/84	21:36:00	9.4333	1,798.81	+144.9	4609.0
295	29/06/84	21:37:00	9.4500	1,798.81	+144.8	4609.0
296	29/06/84	21:38:00	9.4667	1,798.81	+144.8	4609.0
297	29/06/84	21:39:00	9.4833	1,798.80	+144.8	4609.0
298	29/06/84	21:40:00	9.5000	1,798.81	+144.8	4609.0
299	29/06/84	21:41:00	9.5167	1,798.80	+144.8	4609.0
300	29/06/84	21:42:00	9.5333	1,798.80	+144.8	4609.0