

# BLUEBUSH #1

## Composite Logs

Company	MAGELLAN PETROLEUM AUSTRALIA LTD
Well Name	BLUEBUSH #1
Field	WILDCAT
Country	AUSTRALIA
State	NORTHERN TERRITORY
Field Location	ADELAIDE
Latitude	024 35' 15.000" S DMS
Longitude	134 39' 00.000" E DMS
Perm. Datum	GL
Elevation Perm. Datum	347.47 M
Elevation KB (wrt EPD)	353.57 M
Elevation DF (wrt EPD)	353.26 M
Elevation GL (wrt EPD)	347.47 M
Elev. Log Zero (wrt EPD)	353.57 M
Log measured from	KB
Drill measured from	KB
Other Services Ln 1	DLL-MSFL-GR
Other Services Ln 2	BCSS-CAL
Other Services Ln 3	VELOCITY SHOOT
Service Order No	1206
Service company	SCHLUMBERGER
Date Plotted	Tuesday, 1 September 2009
Time Plotted	9:33:11 AM

### Run Information

Run number	1	2			
Log date	18/06/83	18/06/83			
Depth-Driller	1620.32 M	2090.01 M			
Depth-Logger	1620.32 M	2086.97 M			
Bottom log interval	1620.32 M	2083.31 M			

Top log interval	736.40 M	736.40 M			
Bit Size	9.875 INCH	7.875 INCH			
Hole Fluid type	SALTWATER GEL	SALTWATER GEL			
Fluid Density	40.000 G/CC	40.000 G/CC			
Fluid Viscosity	39.00 SEC	39.00 SEC			
Fluid PH	10.5	10.5			
Fluid Loss	3.00 C3	3.00 C3			
Mud Sample Source	FLOWLINE	FLOWLINE			
RM @ Surface	0.055 OHMM	0.055 OHMM			
Mud temp @ Surface	23.89 DEGC	23.89 DEGC			
RMF @ Surface	0.045 OHMM	0.045 OHMM			
MF temp @ Surface	23.89 DEGC	23.89 DEGC			
RMC @ Surface	0.950 OHMM	0.950 OHMM			
MC temp @ Surface	23.89 DEGC	23.89 DEGC			
Mud Filtrate Sample Source	MEAS	MEAS			
Mud Cake Sample Source	MEAS	MEAS			
RM @ Bottom	0.055 OHMM	0.030 OHMM			
MF temp @ Bottom	23.89 DEGC	62.22 DEGC			
RMC @ Bottom	0.950 OHMM				
MC temp @ Bottom	23.89 DEGC				
Time circ. stopped	9	9			
Date circ. stopped	17/06/83	17/06/83			
Time logger at btm	15.41	15.41			
Date logger at btm	18/06/83	17/06/83			
Bottom hole temp	62.22 DEGC	62.22 DEGC			
Max recorded temp	62.22 DEGC	62.22 DEGC			
Logging unit No	DDL 4	DDL 4			
Logging unit Loc	ADELAIDE	ADELAIDE			
Recorded by	P.HOBERG	P.HOBERG			
Witness	R.BELL	R.BELL			

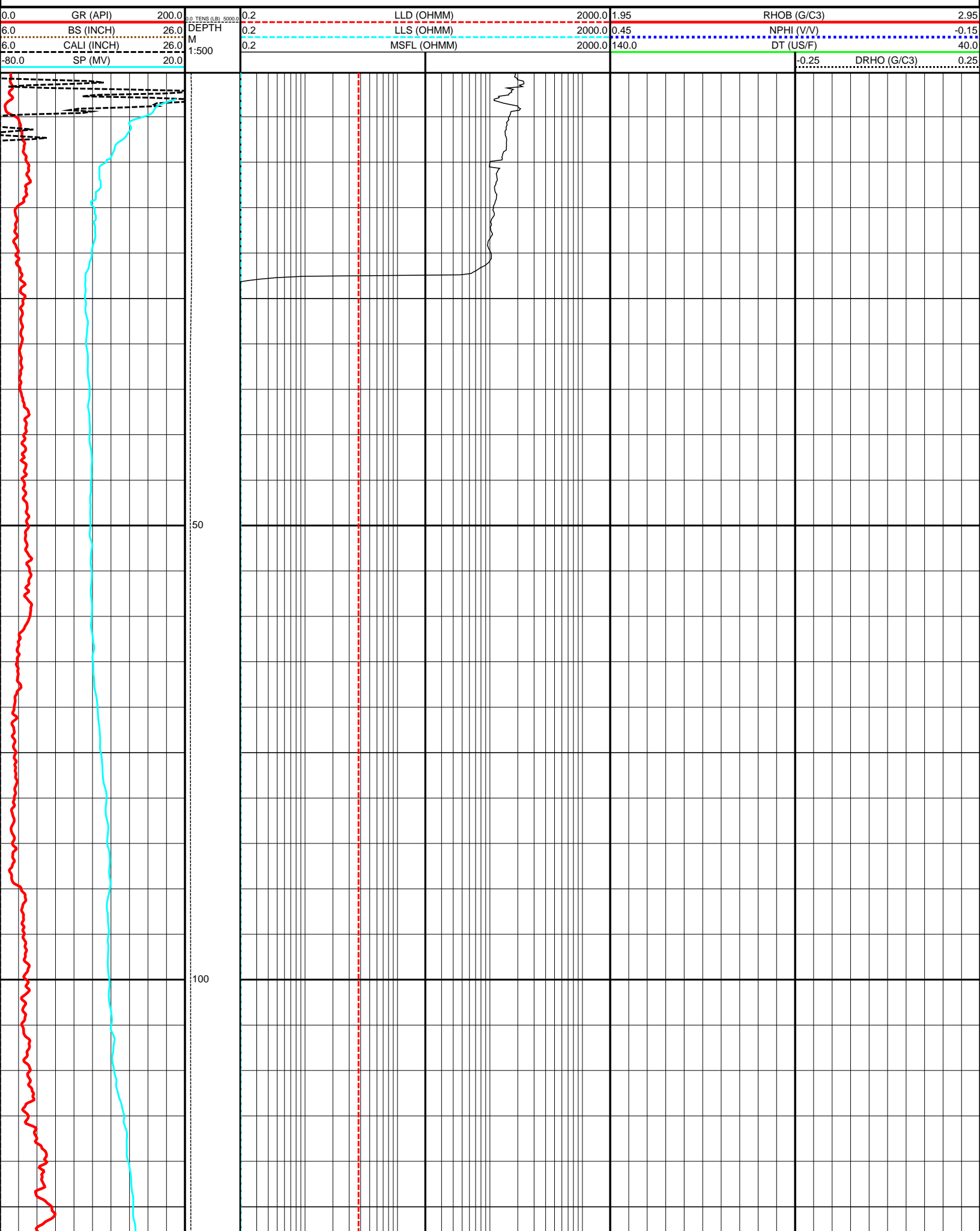
Logs loaded, edited and merged from 2 LIS format file by CDP in June 2009  
SP smoothed and drift corrected  
Well header information completed from scanned PDF well header

Since well log interpretations are opinions based upon inferences from well logs, we cannot and do not guarantee the correctness or accuracy of any interpretation. Therefore we shall not be liable or responsible for any loss, damage, cost or expense incurred or sustained by anyone resulting from any interpretation.

## Log Description

GR	Gamma Ray
BS	Bit Size
CALI	Caliper
SP	Spontaneous Potential Log
LLD	Laterolog Deep Resistivity
LLS	Shallow Laterolog
MSFL	Micro Spherically Focused Log
RHOB	Compensated Formation Density
NPHI	Neutron Porosity
DT	Delta T Compressional
DRHO	Density Correction

TENS Cable tension at surface



0.0	GR (API)	200.0
6.0	BS (INCH)	26.0
6.0	CALI (INCH)	26.0
-80.0	SP (MV)	20.0

0.2	LLD (OHMM)	2000.0
0.2	LLS (OHMM)	2000.0
0.2	MSFL (OHMM)	2000.0

1.95	RHO (G/C3)	2.95
0.45	NPHI (V/V)	-0.15
140.0	DT (US/F)	40.0
-0.25	DRHO (G/C3)	0.25

