

MOUNT WINTER-1

Composite Logs

| | |
|--------------------------|--------------------------------------|
| Company | PAN CONTINENTAL |
| Well Name | MOUNT WINTER-1 |
| Field | WILDCAT |
| Country | AUSTRALIA |
| State | N.T. |
| Continent | AUSTRALIA |
| Field Location | WILDCAT |
| Latitude | 023 51' 57.300" S DMS |
| Longitude | 130 47' 40.600" E DMS |
| Perm. Datum | MSL |
| Elevation Perm. Datum | 0.00 M |
| Elevation KB (wrt EPD) | 653.50 M |
| Elevation DF (wrt EPD) | 653.30 M |
| Elevation GL (wrt EPD) | 646.00 M |
| Elev. Log Zero (wrt EPD) | 653.50 M |
| Log measured from | DF |
| Drill measured from | DF |
| Services | DST-G, HDT, CIS, FDC-CNL-G, BHC, CST |
| Date Plotted | Thursday, 27 August 2009 |
| Time Plotted | 1:05:10 PM |

Run Information

| Run number | 1 | 2 | | | |
|---------------------|-------------|-------------|--|--|--|
| Log date | 15 Jan 1982 | 09 FEB 1982 | | | |
| Depth-Driller | 1295.60 M | 2650.00 M | | | |
| Depth-Logger | 1296.00 M | 2517.00 M | | | |
| Bottom log interval | 1292.00 M | 2516.50 M | | | |
| Top log interval | 163.00 M | 1297.50 M | | | |
| Casing-Driller | 13.38 M | 9.63 M | | | |
| Casing-Logger | 163.00 M | 1297.50 M | | | |

| | | | | |
|----------------------------|--------------|--------------|--|--|
| Casing Depth | 163.00 M | 1296.00 M | | |
| Bit Size | 12.250 INCH | 8.500 INCH | | |
| Hole Fluid type | WATER | SALT POLYMER | | |
| Fluid Density | 8.300 G/CC | 10.600 G/CC | | |
| Fluid Viscosity | 25.00 SEC | 39.00 SEC | | |
| Fluid PH | 7.5 | 7.5 | | |
| Fluid Loss | | 4.80 C3 | | |
| Mud Sample Source | FLOWLINE | FLOWLINE | | |
| RM @ Surface | 1.650 OHMM | 0.046 OHMM | | |
| Mud temp @ Surface | 33.89 DEGC | 23.89 DEGC | | |
| RMF @ Surface | 1.650 OHMM | 0.037 OHMM | | |
| MF temp @ Surface | 33.89 DEGC | 23.89 DEGC | | |
| RMC @ Surface | | 0.068 OHMM | | |
| MC temp @ Surface | | 23.89 DEGC | | |
| Mud Filtrate Sample Source | | MEASURED | | |
| Mud Cake Sample Source | | MEASURED | | |
| RM @ Bottom | 1.290 OHMM | 0.025 OHMM | | |
| Mud temp @ Bottom | 55.00 DEGC | 65.56 DEGC | | |
| Bottom hole temp | 55.00 DEGC | 65.56 DEGC | | |
| Max recorded temp | 55.00 DEGC | 63.89 DEGC | | |
| Logging unit No | 3703 | 3703 | | |
| Logging unit Loc | OROEAA | OEA | | |
| Recorded by | S. WINGOVIST | P. LOLLBACK | | |
| Witness | C.P.HIGGINS | C.P.HIGGINS | | |

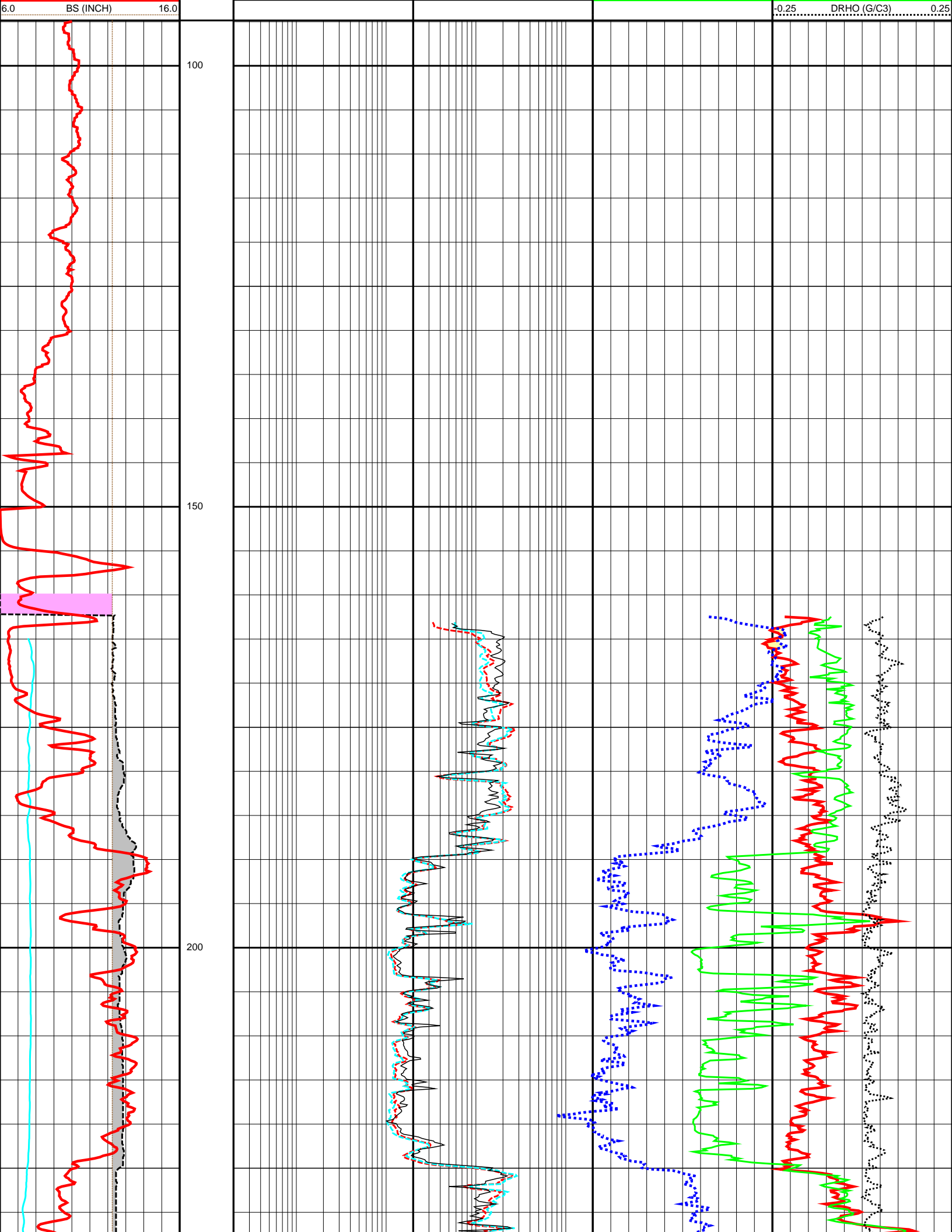
Weatherford 27/May/2009
Log data loaded from four LIS files. Logs merged.
Header from digital data and PDF field print scan.
Logs edited to remove non-formation readings. GR in casing above
SP response frequently does not reflect lithology changes, Drift correction questionable.
DT despiking. Logging suites depth matched.

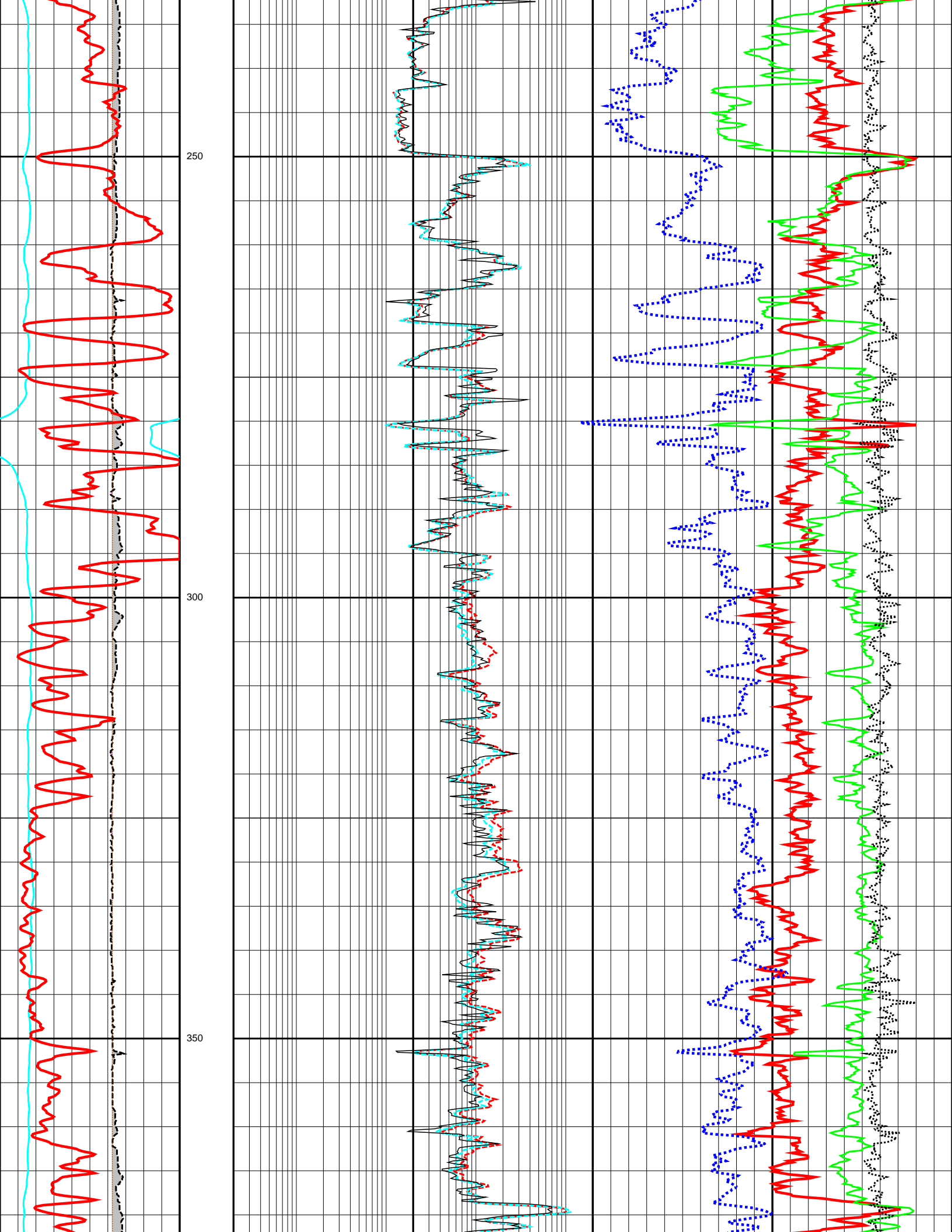
Since well log interpretations are opinions based upon inferences from well logs, we cannot and do not guarantee the correctness or accuracy of any interpretation. Therefore we shall not be liable or responsible for any loss, damage, cost or expense incurred or sustained by anyone resulting from any interpretation.

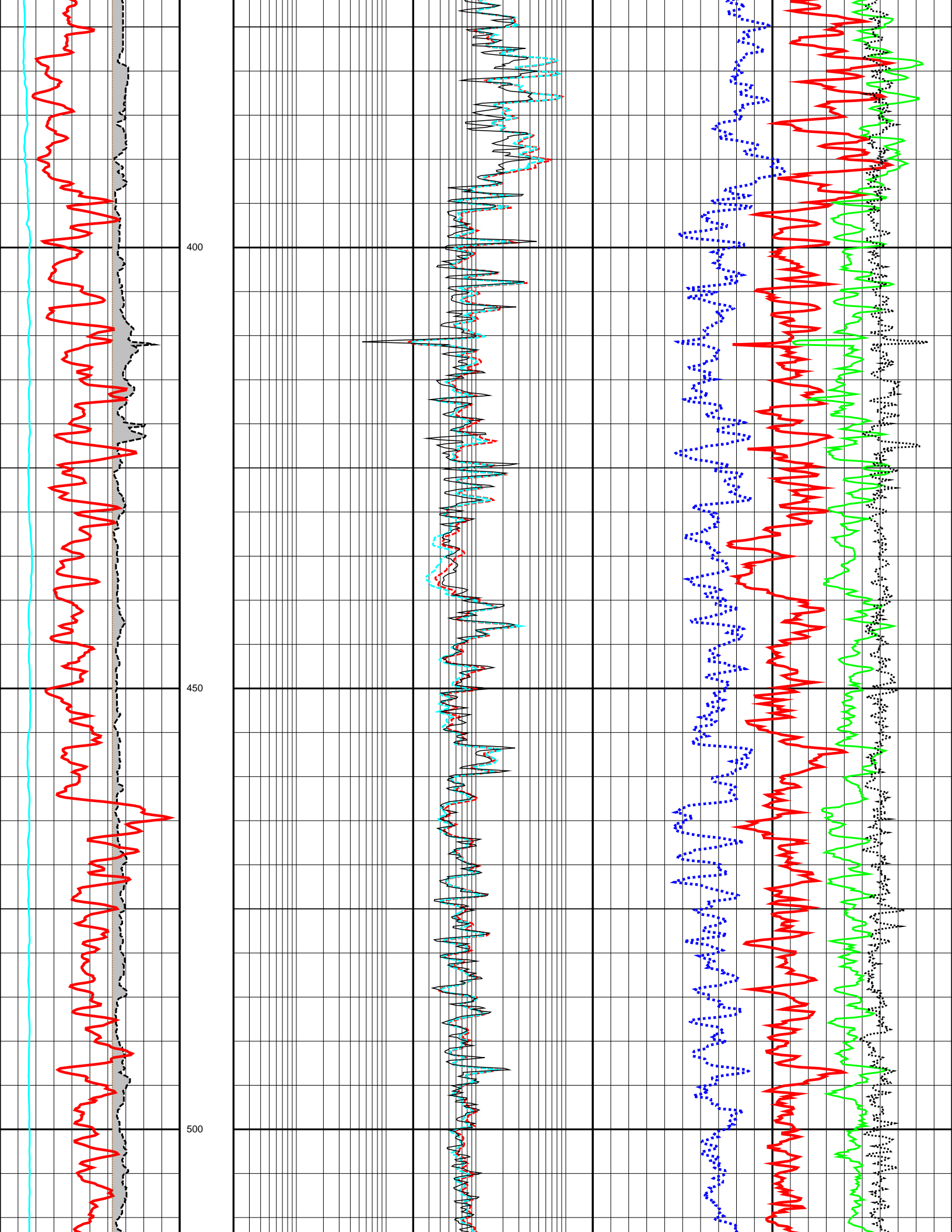
Log Description

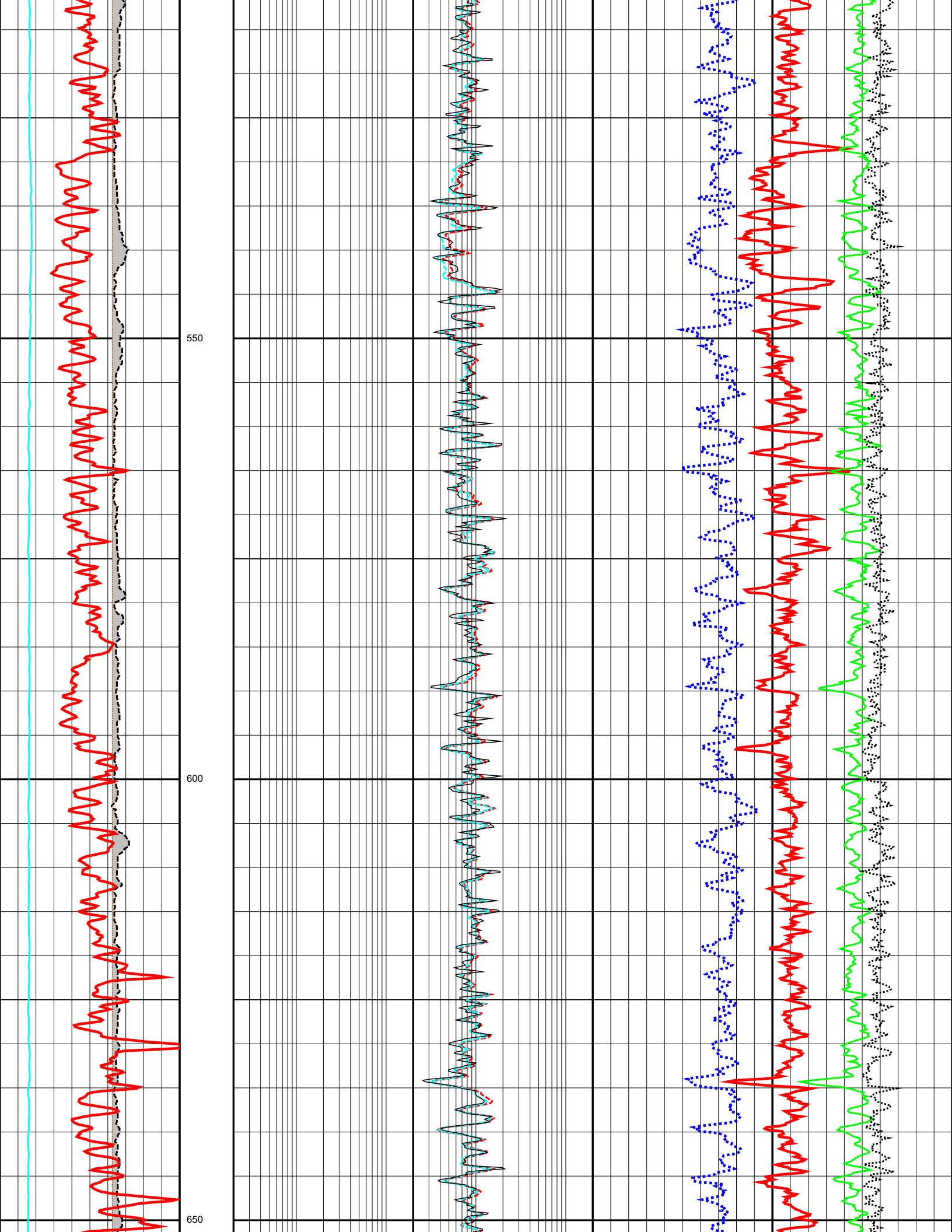
| | |
|------|-------------------------------|
| CALI | Caliper |
| SP | Spontaneous Potential Log |
| LLD | Laterolog Deep Resistivity |
| LLS | Shallow Laterolog |
| MSFL | Micro Spherically Focused Log |
| RHOB | Compensated Formation Density |
| NPHI | Neutron Porosity |
| DT | Delta T Compressional |
| DRHO | Density Correction |
| GR | Gamma Ray |
| BS | Bit Size |

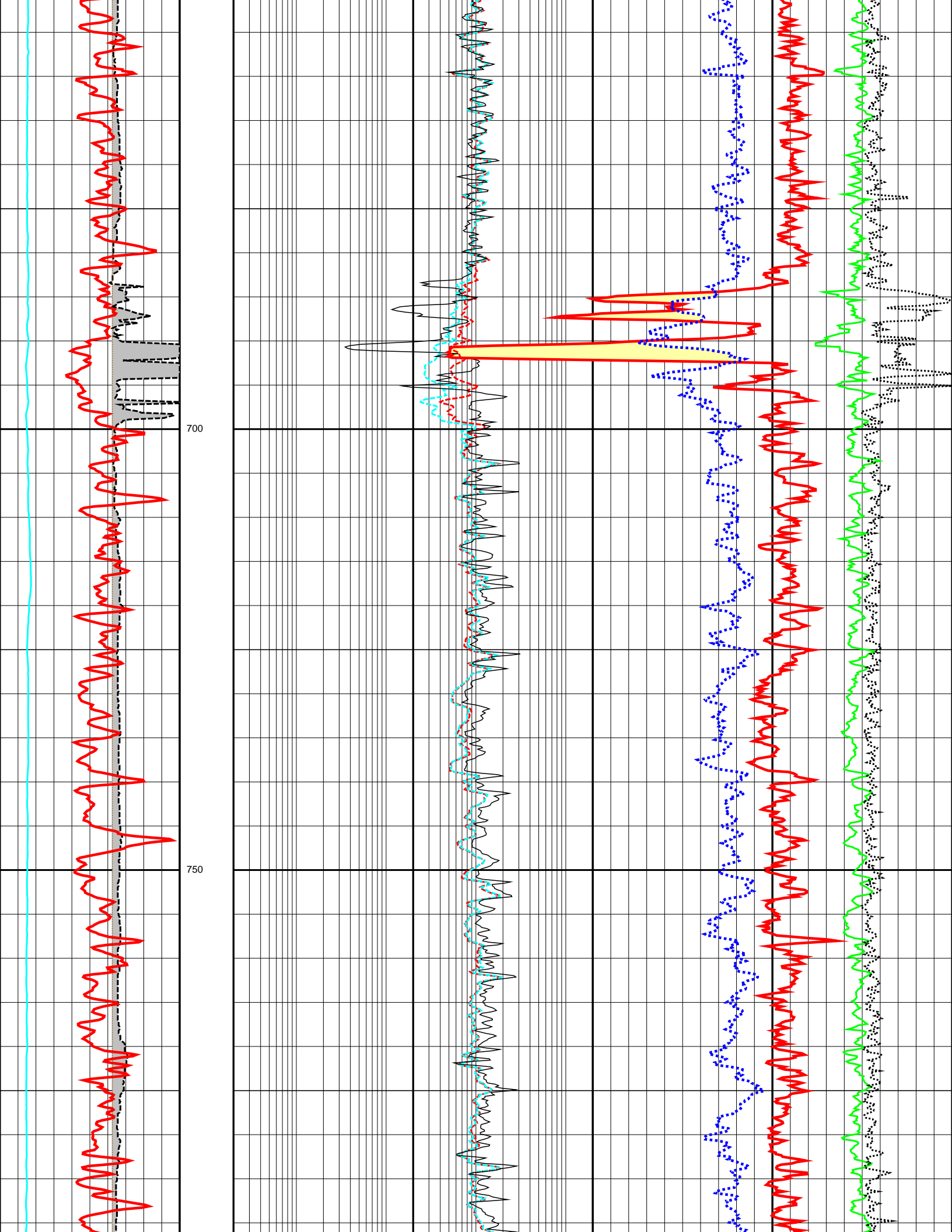
| | | | | | | | | | |
|-------|-------------|-------|-------|-----|-------------|--------|-------|-------------|-------|
| 6.0 | CALI (INCH) | 16.0 | DEPTH | 0.2 | LLD (OHMM) | 2000.0 | 1.95 | RHOB (G/C3) | 2.95 |
| -50.0 | SP (MV) | 250.0 | M | 0.2 | LLS (OHMM) | 2000.0 | 0.45 | NPHI (V/V) | -0.15 |
| 0.0 | GR (API) | 200.0 | 1:500 | 0.2 | MSFL (OHMM) | 2000.0 | 140.0 | DT (US/F) | 40.0 |

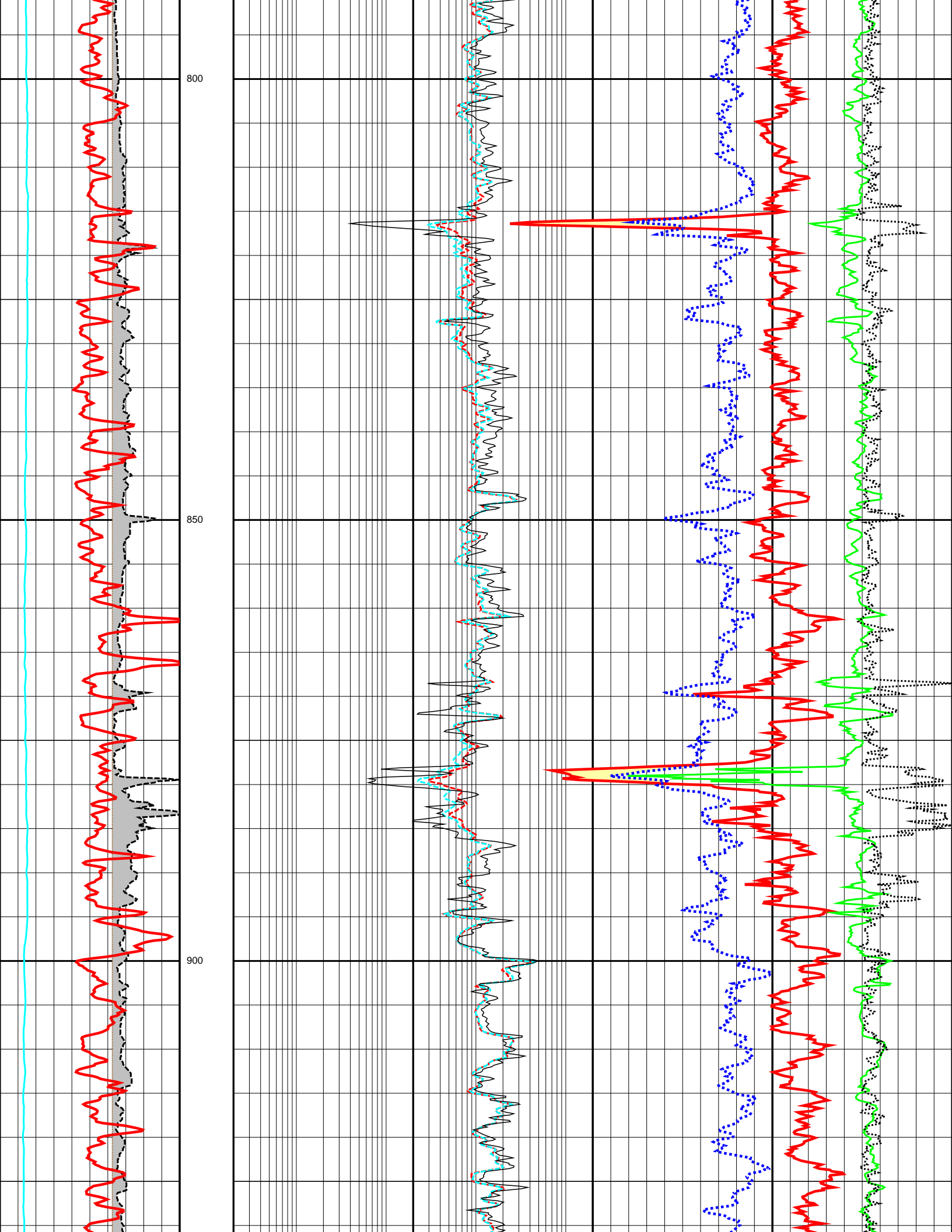


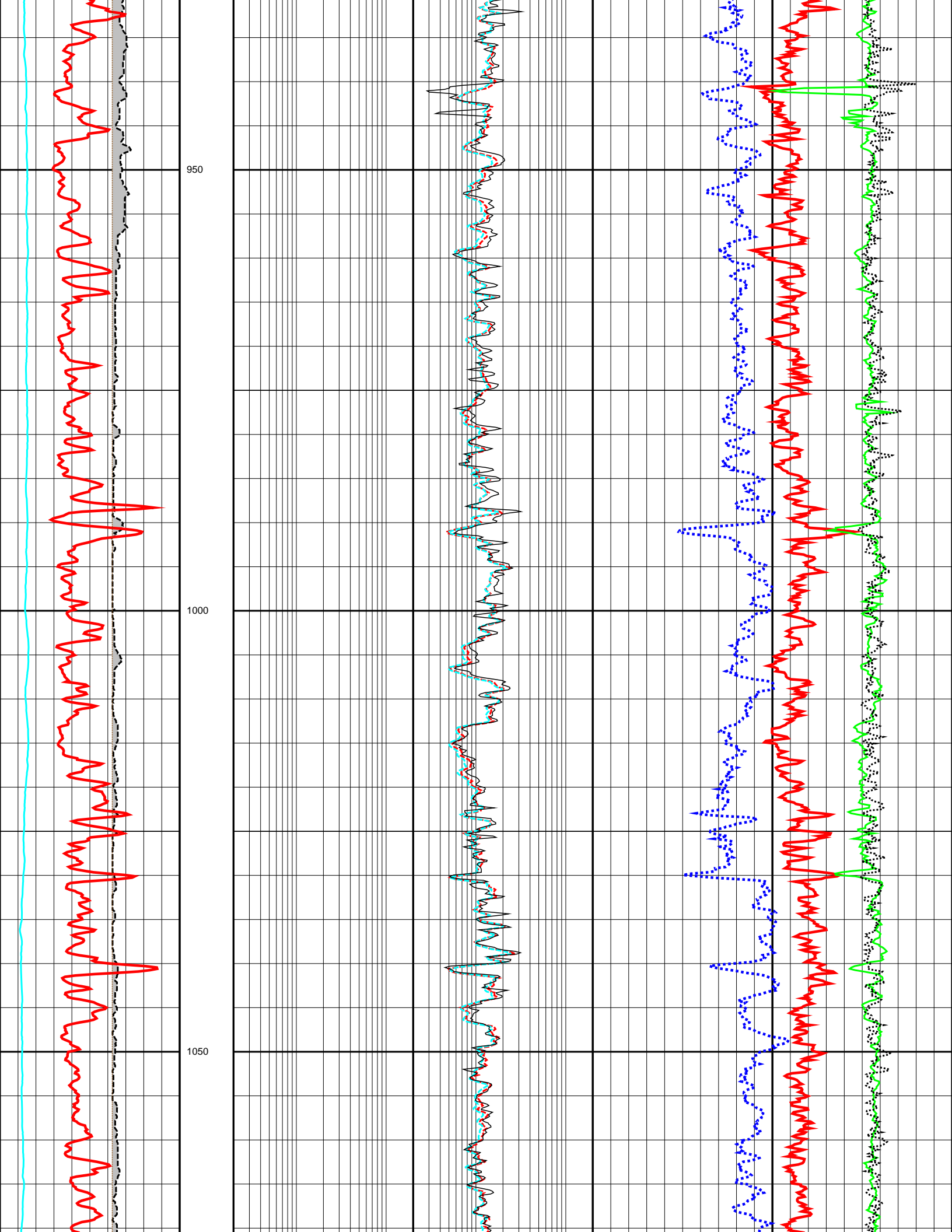


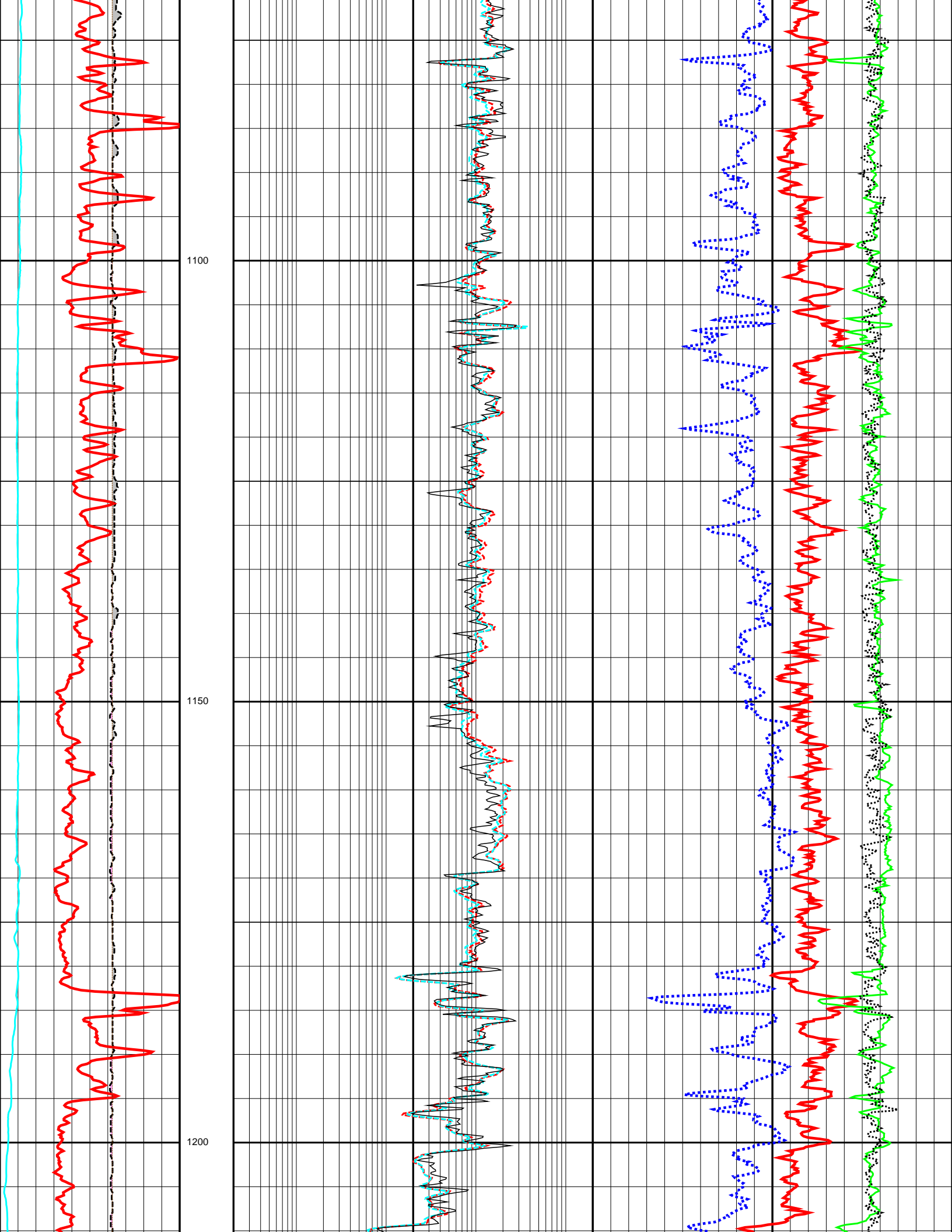


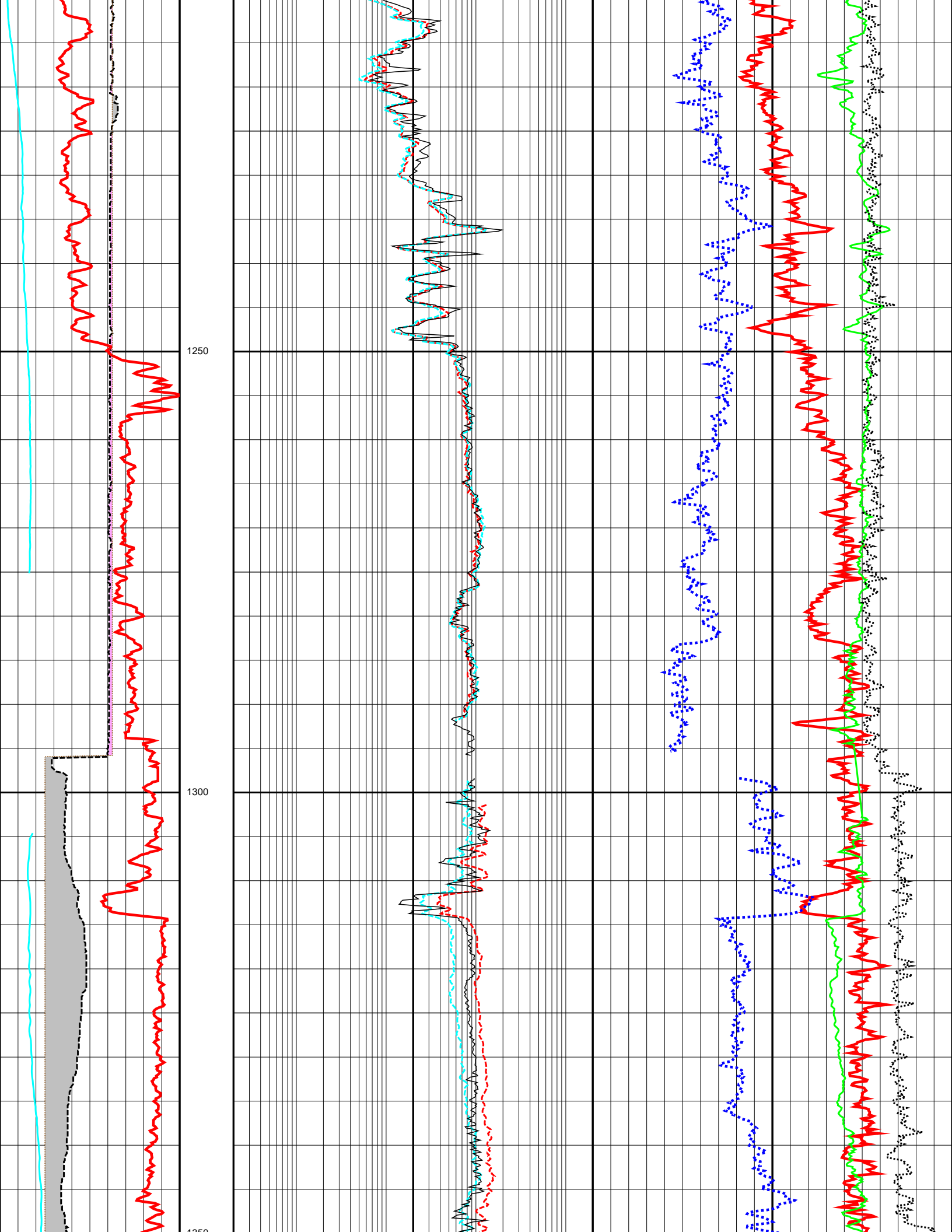


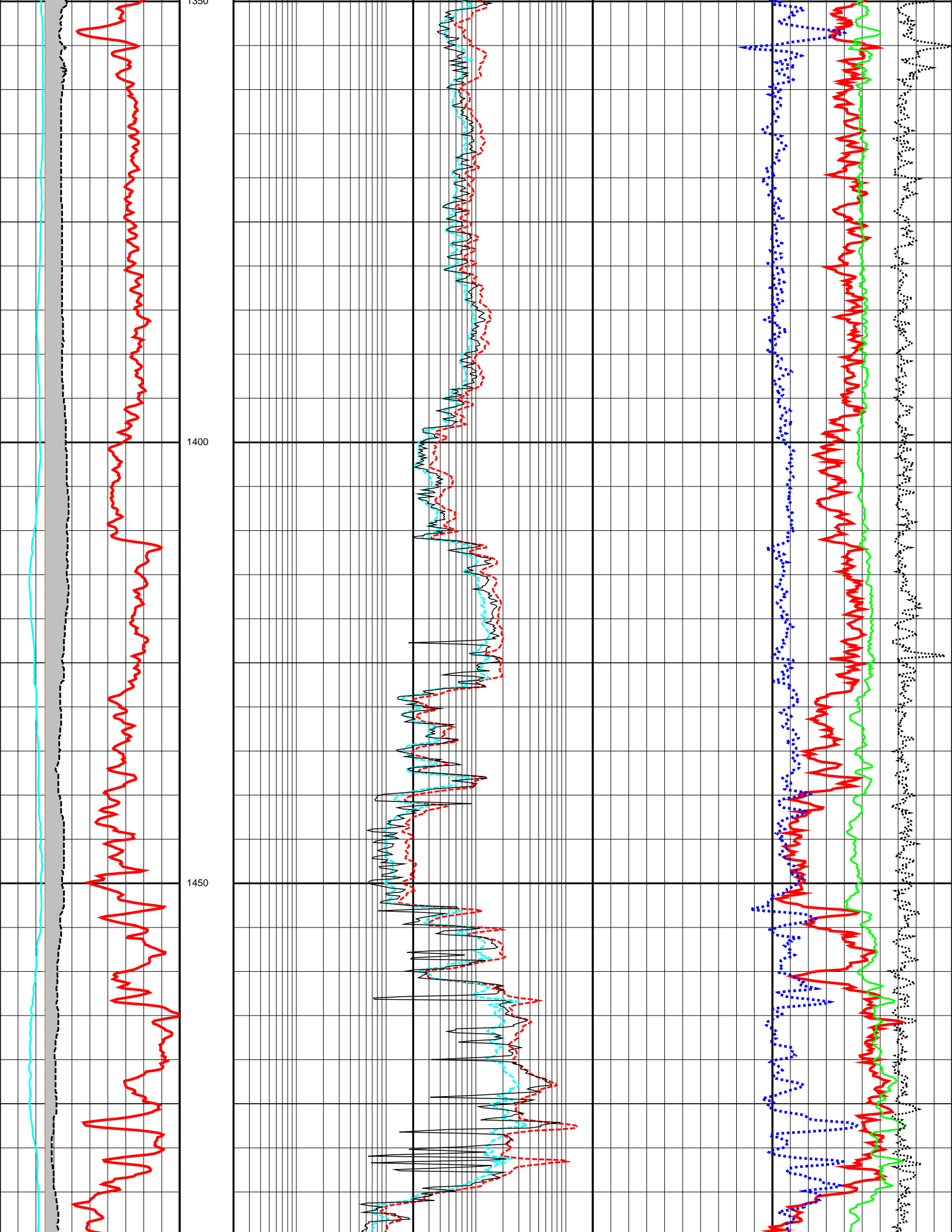


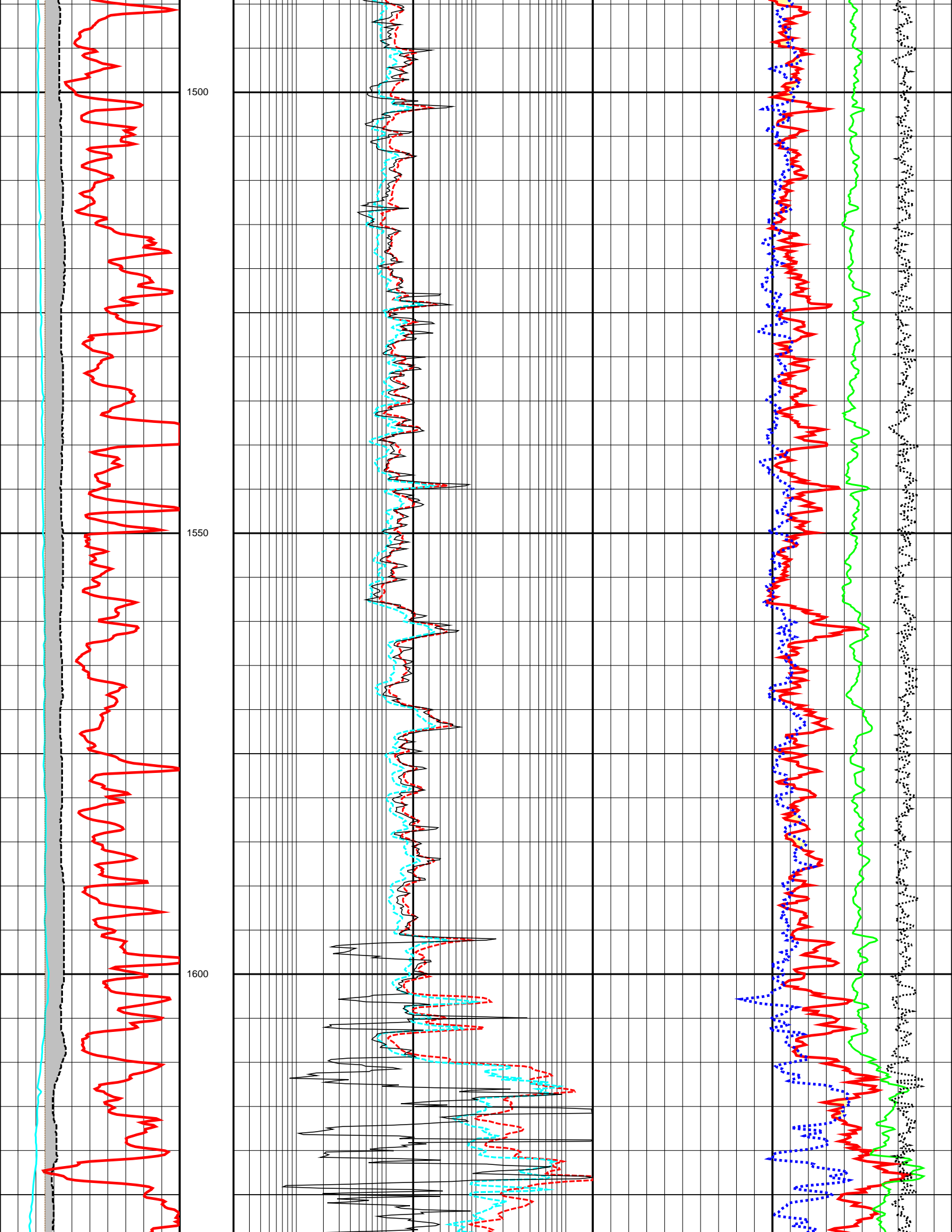


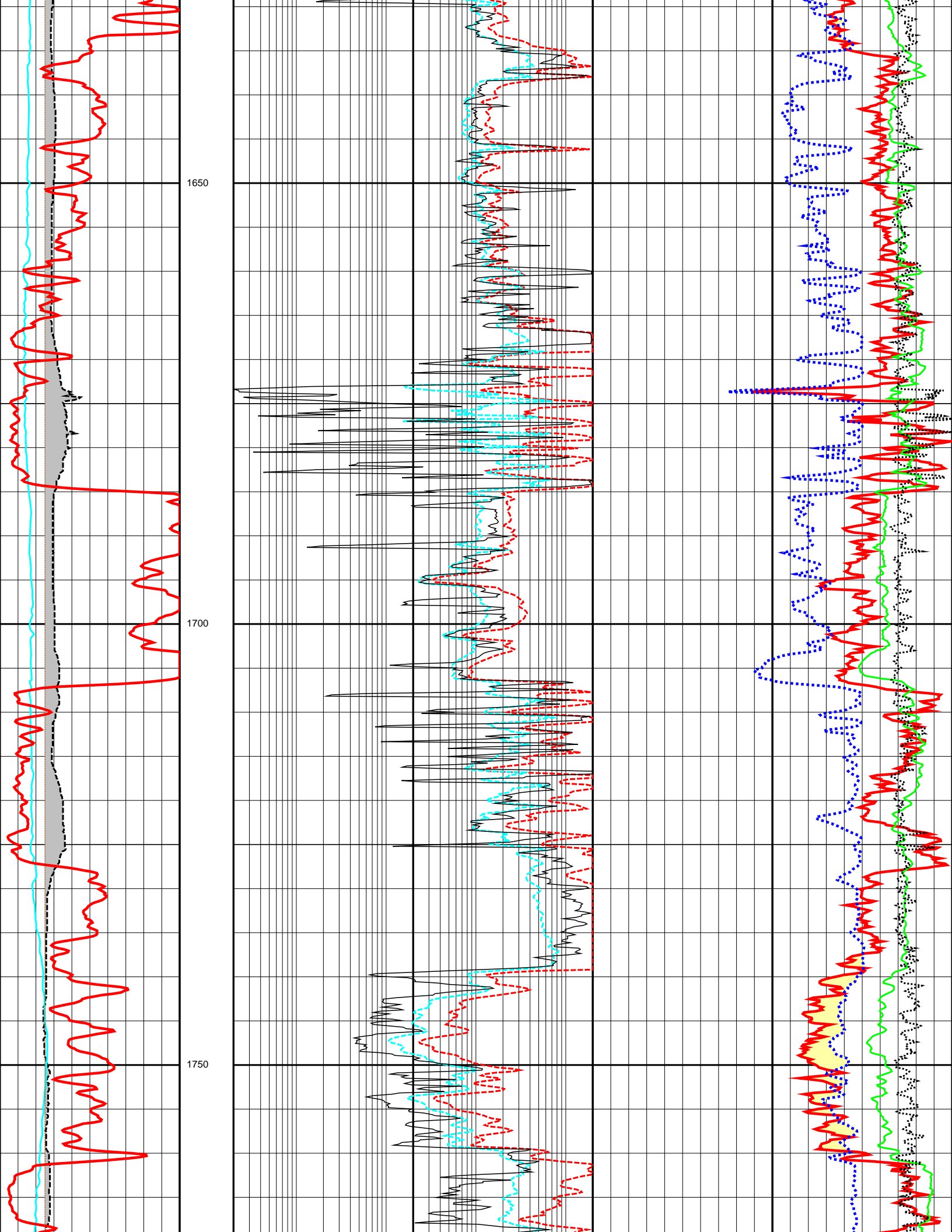


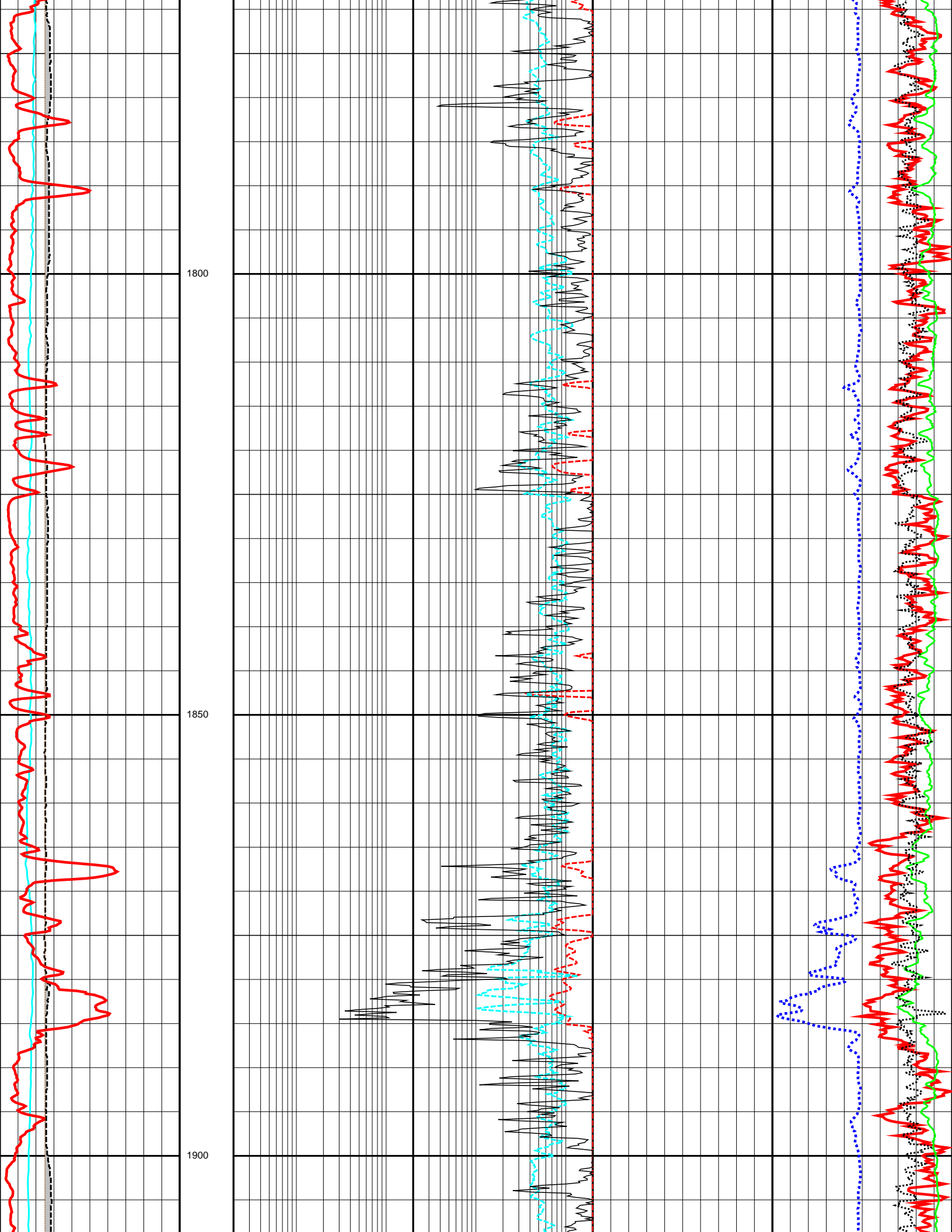


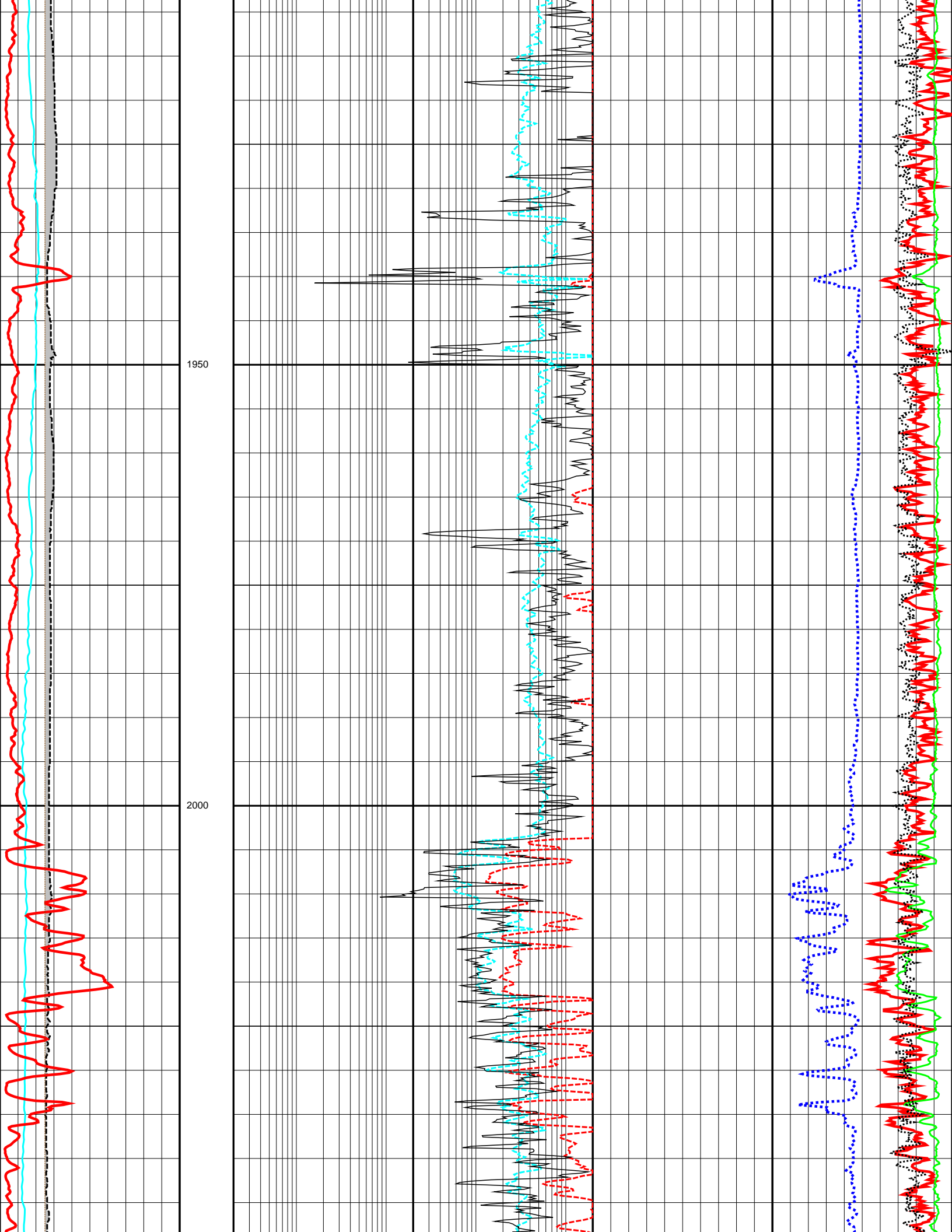


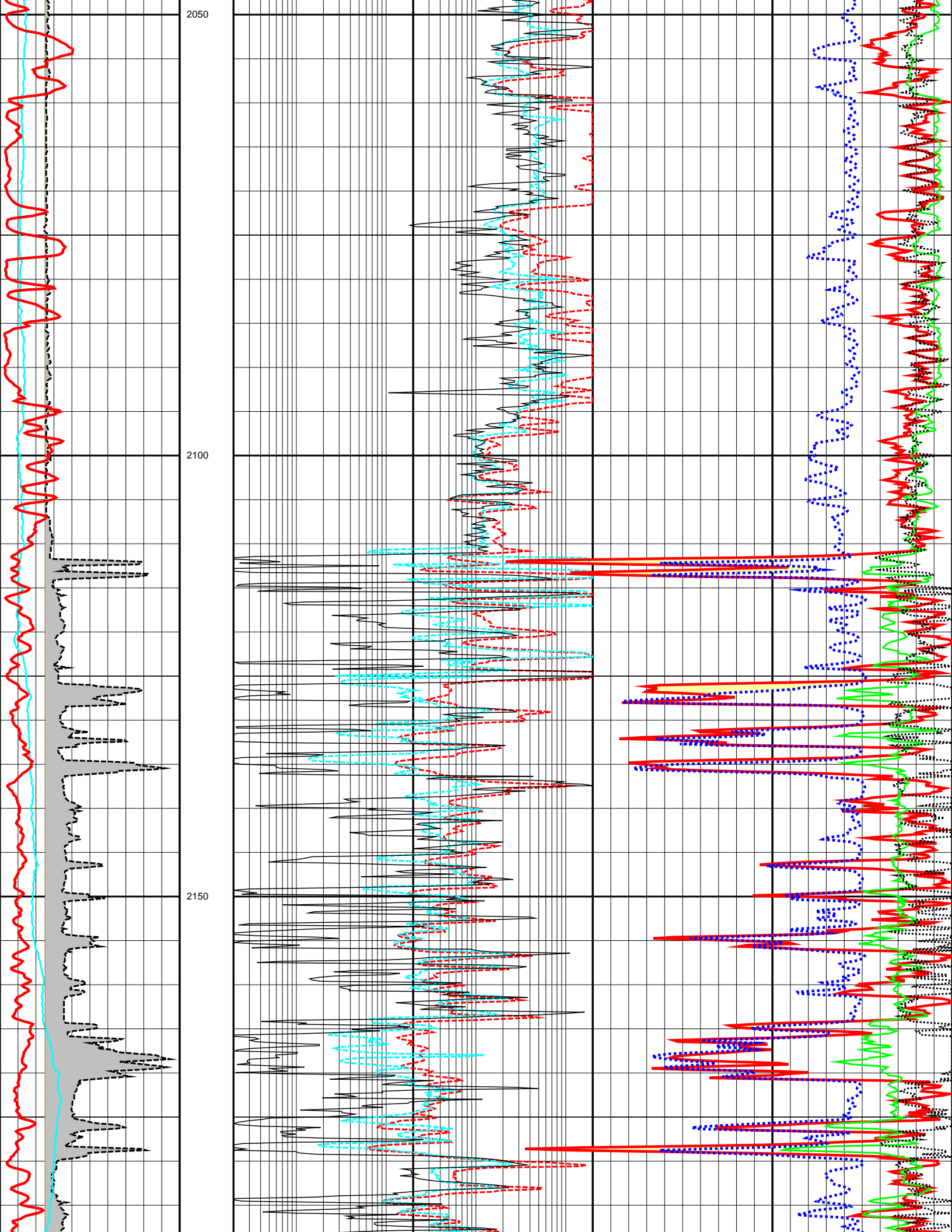


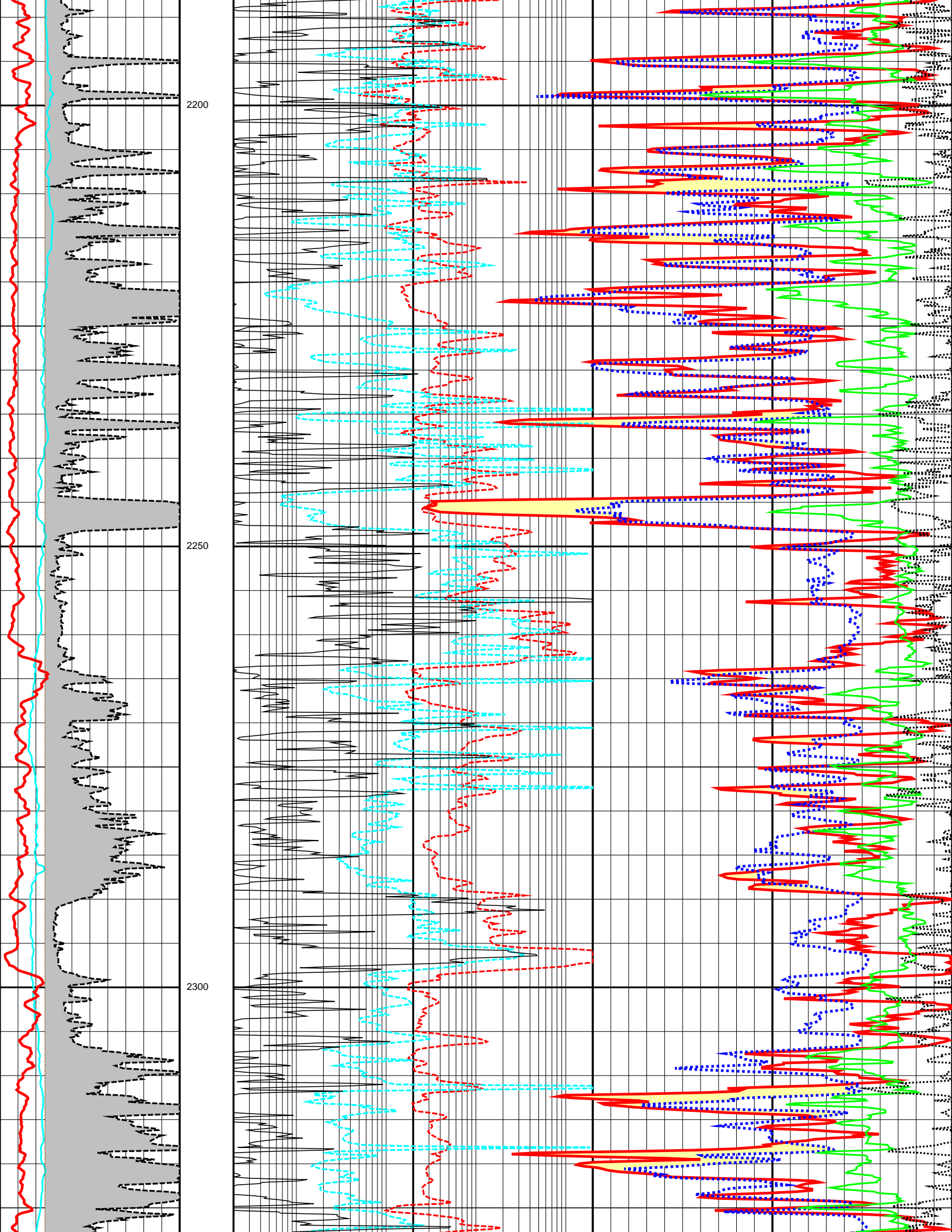


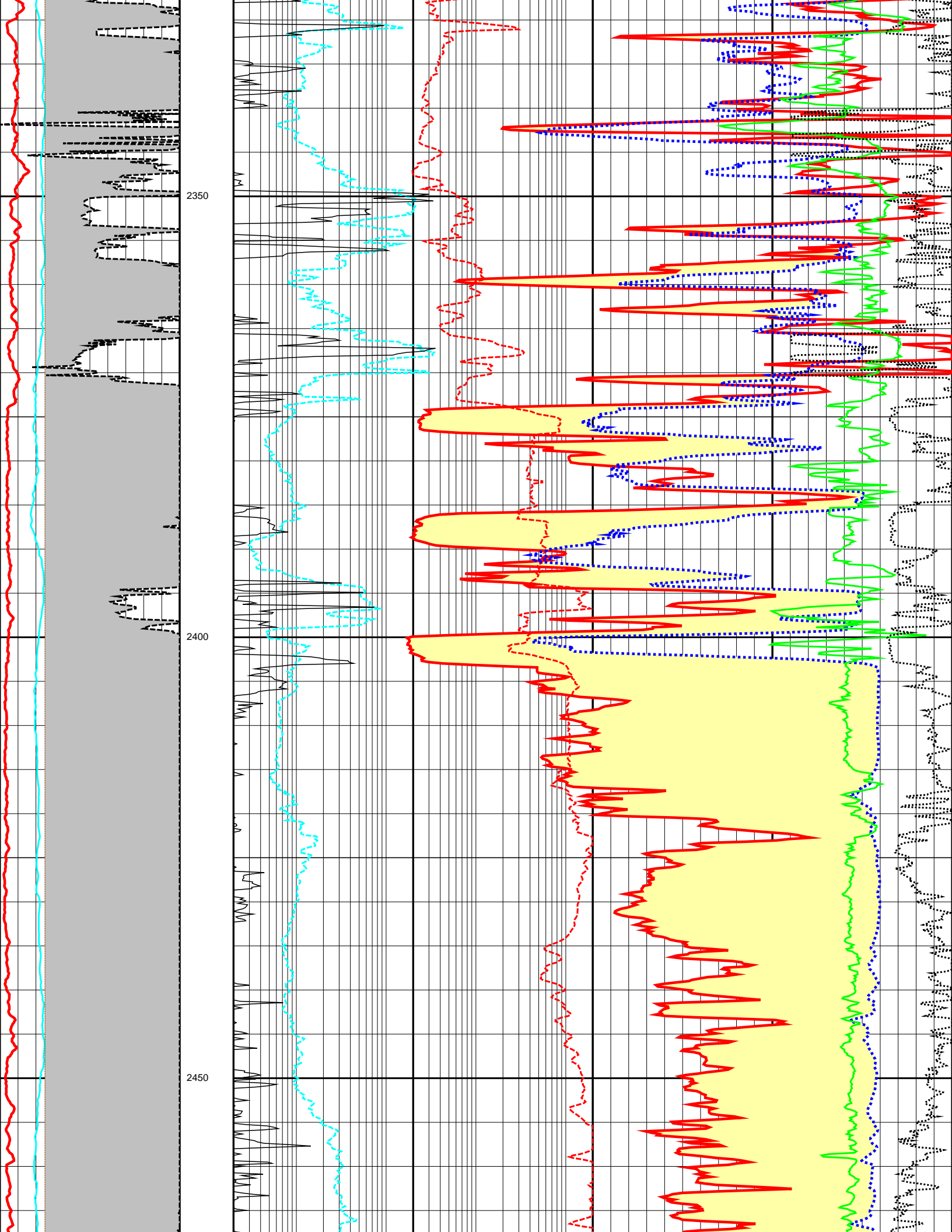


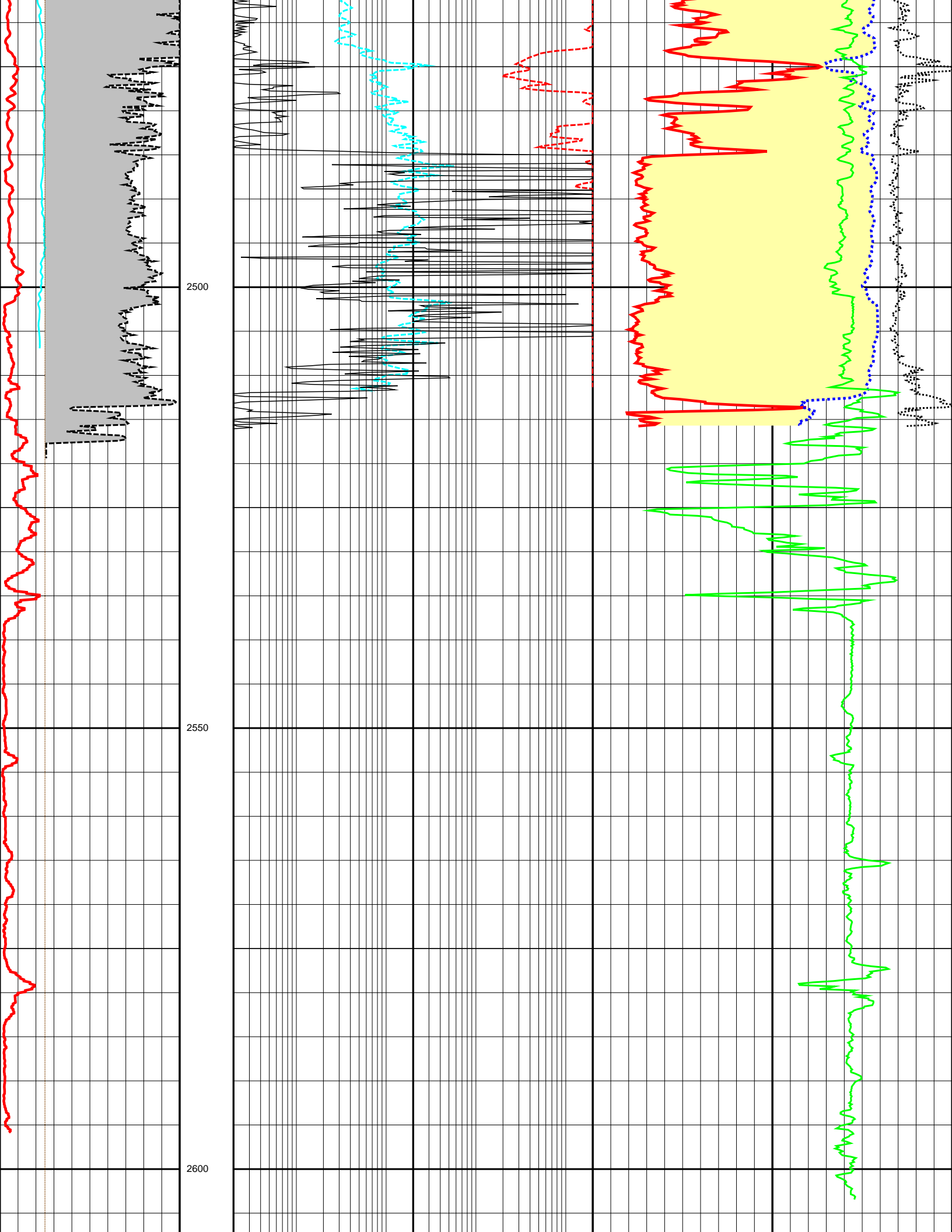












| | | | | | | | | | | |
|-------|-------------|-------|-------|-----|-------------|--------|-------|-------------|-------------|------|
| 6.0 | CALI (INCH) | 16.0 | DEPTH | 0.2 | LLD (OHMM) | 2000.0 | 1.95 | RHOB (G/C3) | 2.95 | |
| -50.0 | SP (MV) | 250.0 | M | 0.2 | LLS (OHMM) | 2000.0 | 0.45 | NPHI (V/V) | -0.15 | |
| 0.0 | GR (API) | 200.0 | 1:500 | 0.2 | MSFL (OHMM) | 2000.0 | 140.0 | DT (US/F) | 40.0 | |
| 6.0 | BS (INCH) | 16.0 | | | | | | -0.25 | DRHO (G/C3) | 0.25 |