

ORANGE No. 1

Composite Logs

Company	MAGELLAN PETROLEUM (N.T.) PTY LTD
Well Name	ORANGE No. 1
Field	WILDCAT
Country	AUSTRALIA
State	NORTHER TERRITORY
Continent	AUSTRALIA
Latitude	024 02' 34.000" S DMS
Longitude	133 46' 32.000" E DMS
Perm. Datum	GL
Elevation Perm. Datum	585.83 M
Elevation KB (wrt EPD)	3.96 M
Elev. Log Zero (wrt EPD)	3.96 M
Log measured from	KB
Drill measured from	KB
Services	GAMMA - GUARD
Service company	Schlumberger
Date Plotted	Wednesday, 7 October 2009
Time Plotted	2:31:20 PM

Run Information

Run number	1	2	3	4	
Log date	24 AUG 1966	03 SEP 1966	22 SEP 1966	01 OCT 1966	
Depth-Driller	736.40 M	1332.59 M	2211.93 M	2598.42 M	
Depth-Logger	735.48 M	1331.37 M	2211.93 M	2406.70 M	
Bottom log interval	733.96 M	1331.37 M	2211.93 M	2405.48 M	
Top log interval	6.10 M	731.52 M	1325.88 M	2194.56 M	
Casing-Driller	101.80 M	735.18 M	1328.93 M	1328.93 M	
Casing Diameter	16.000 INCH	10.250 INCH	8.625 INCH	8.625 INCH	
Bit Size	13.750 INCH	9.875 INCH	7.875 INCH	7.875 INCH	
Hole Fluid type	WATER	Water	Water	Saturated Salt Water	

Mud Sample Source	FLOWLINE	FLOWLINE	FLOWLINE	FLOWLINE	
RM @ Surface	0.150 OHMM	0.150 OHMM	0.150 OHMM	0.150 OHMM	
Mud temp @ Surface	12.78 DEGC	12.78 DEGC	12.78 DEGC	12.78 DEGC	
Bottom hole temp	43.89 DEGC	43.89 DEGC	87.78 DEGC	92.22 DEGC	
Max recorded temp	43.89 DEGC	43.89 DEGC	87.78 DEGC	92.22 DEGC	
Logging unit No	7343	7343	7343	7343	
Logging unit Loc	ALICE	ALICE	ALICE	ALICE	
Recorded by	BILIDA	BILIDA	BILIDA	BILIDA	
Witness	BANKS AND KERR	BANKS AND KERR	BANKS AND KERR	BANKS AND KERR	

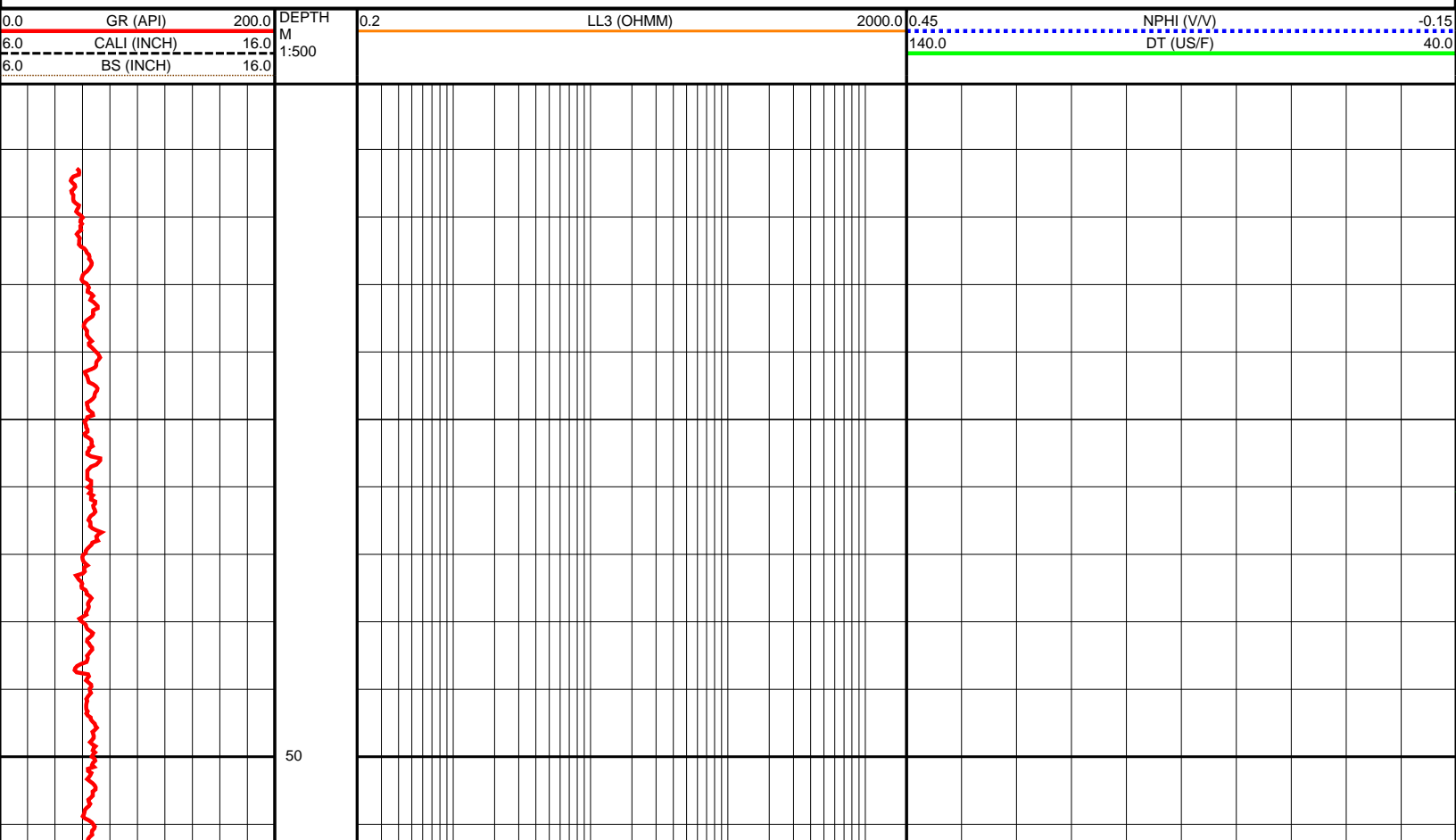
Logs loaded, edited and merged from 1 LIS format file by CDP in June 2009
DT Log despiked, SP Log Smoothed and drift corrected, Converted Raw Neutron API count (NEUT) to Neutron Porosity V/V (NPHI).
Well header information completed from scanned PDF well header

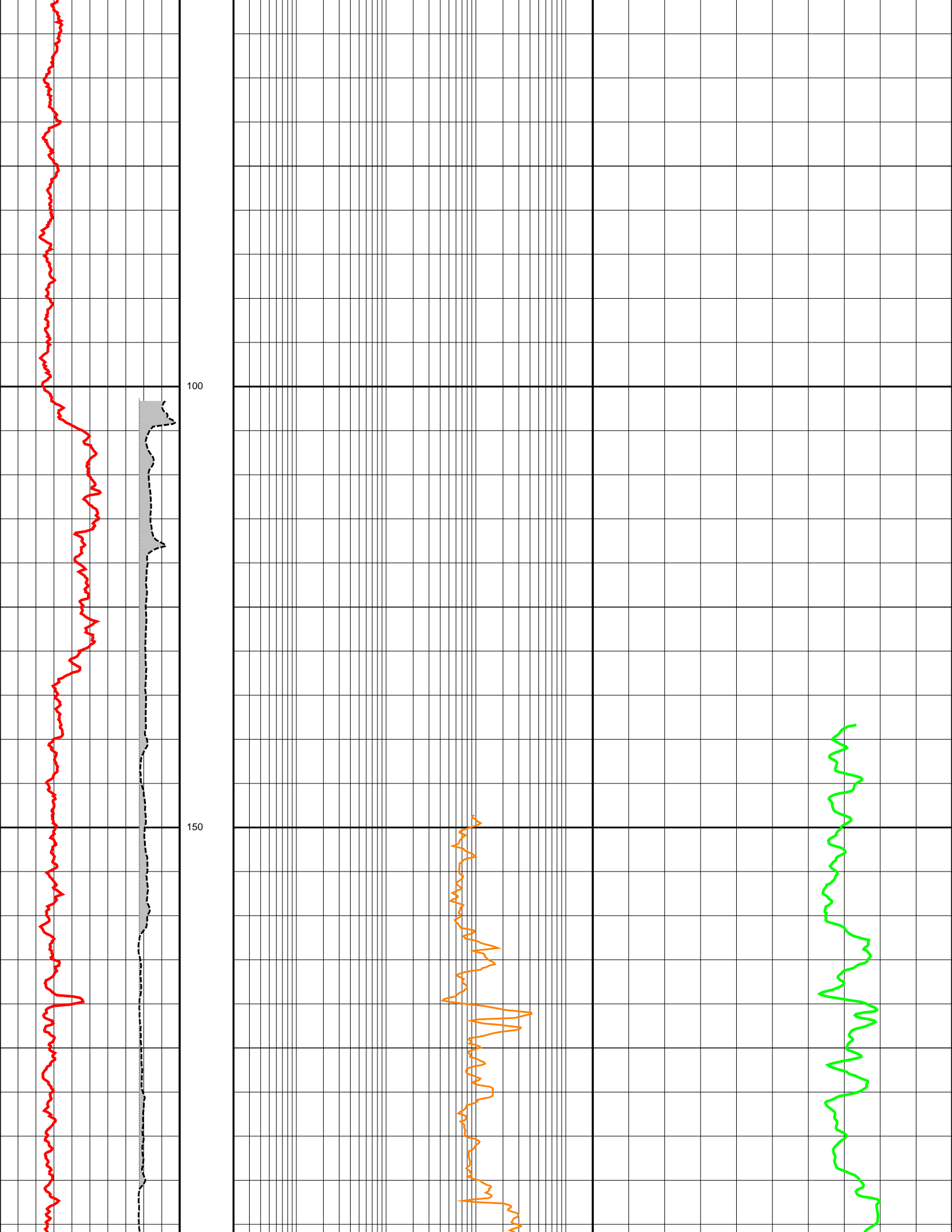
HOLE WAS AIR DRILLED. FLUID IN HOLE IS NATURAL FILL UP.

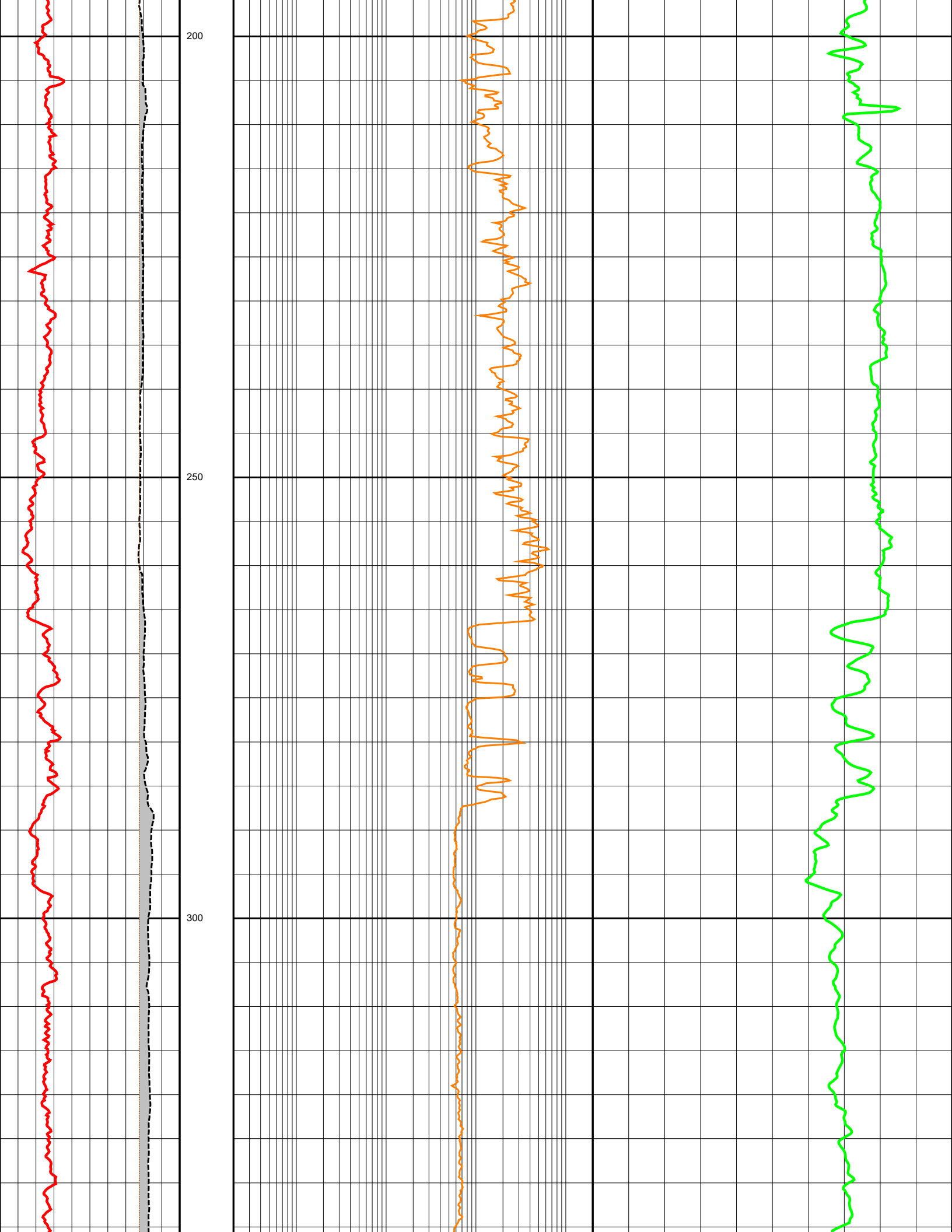
Since well log interpretations are opinions based upon inferences from well logs, we cannot and do not guarantee the correctness or accuracy of any interpretation. Therefore we shall not be liable or responsible for any loss, damage, cost or expense incurred or sustained by anyone resulting from any interpretation.

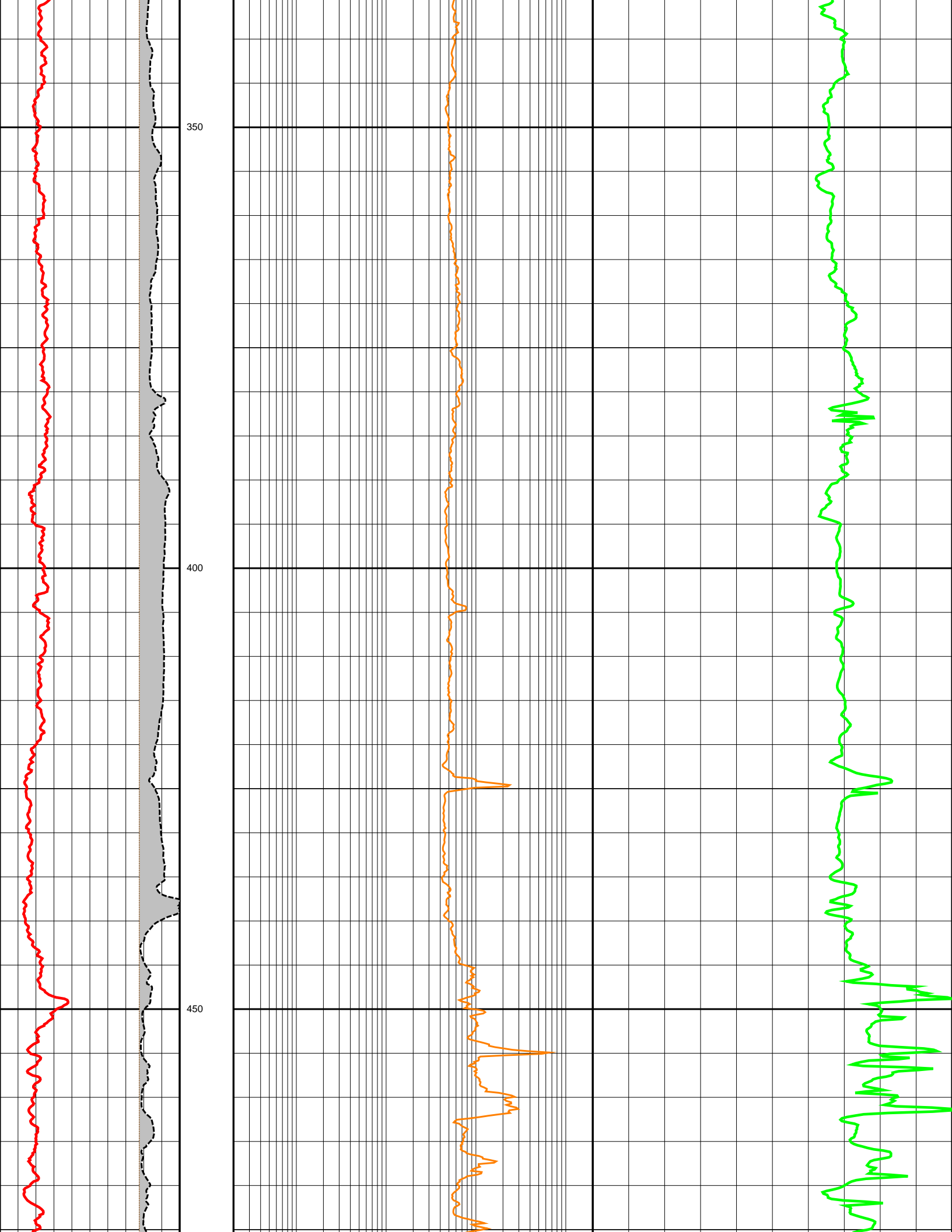
Log Description

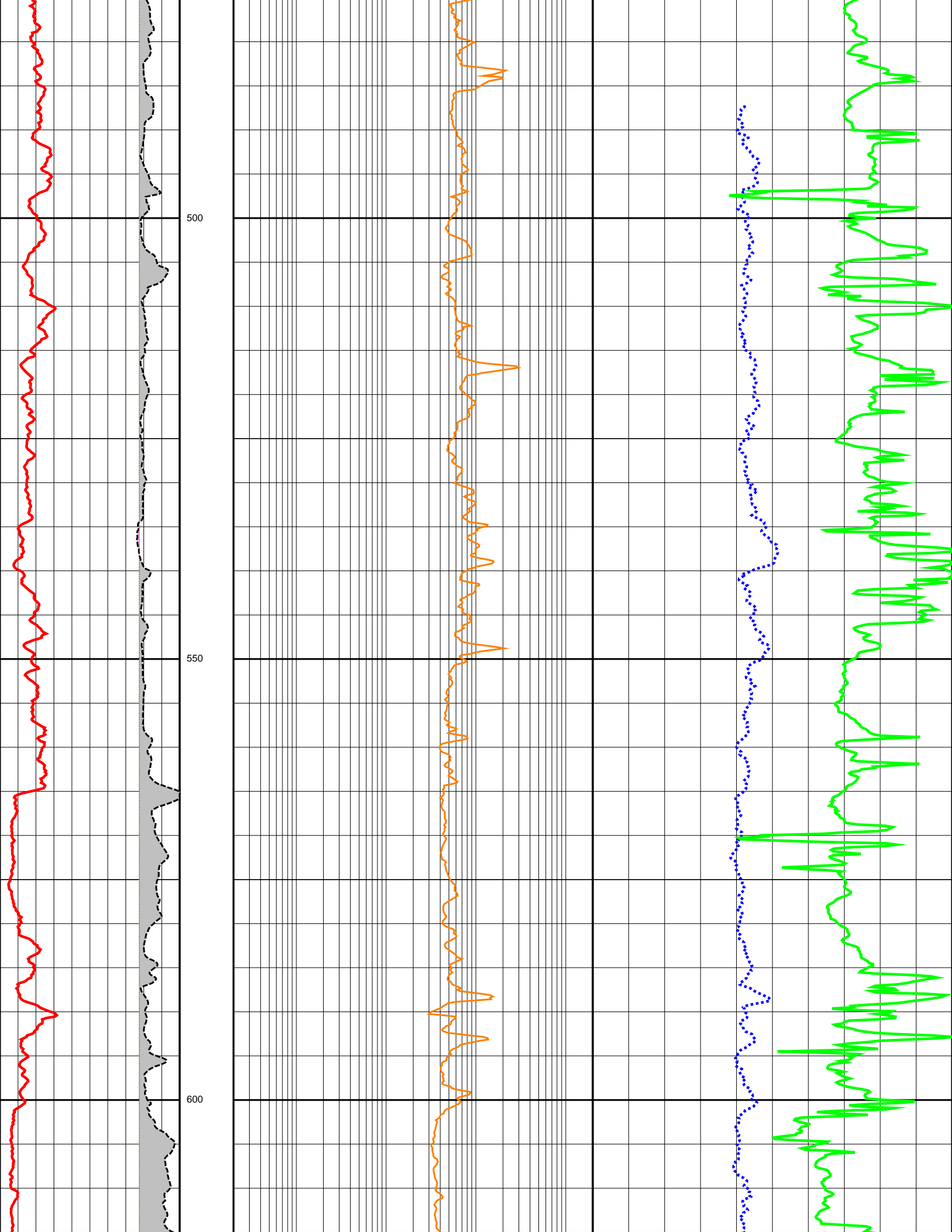
GR	Gamma Ray
CALI	Caliper
LL3	Laterolog 3
NPHI	Neutron Porosity
DT	Delta T Compressional
BS	Bit Size

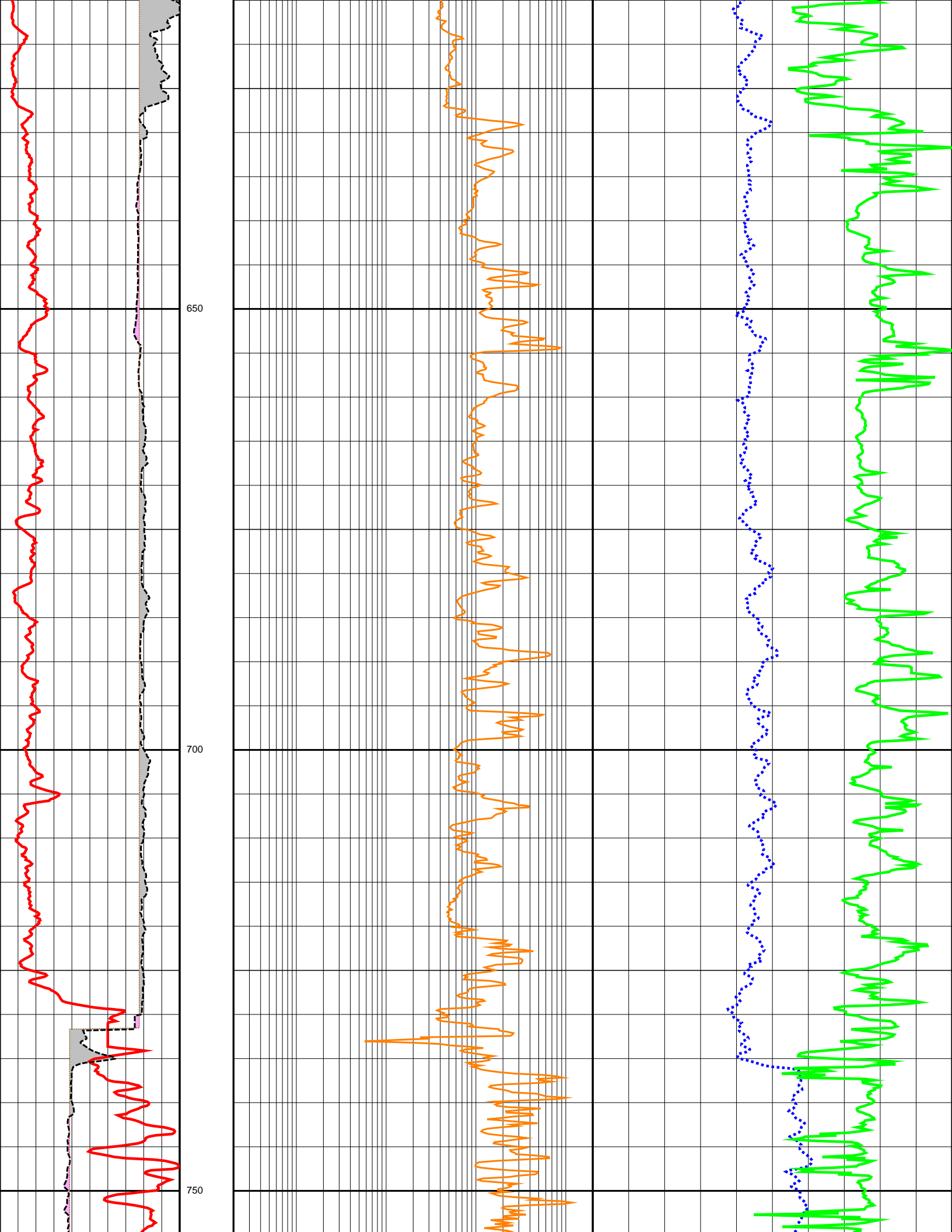


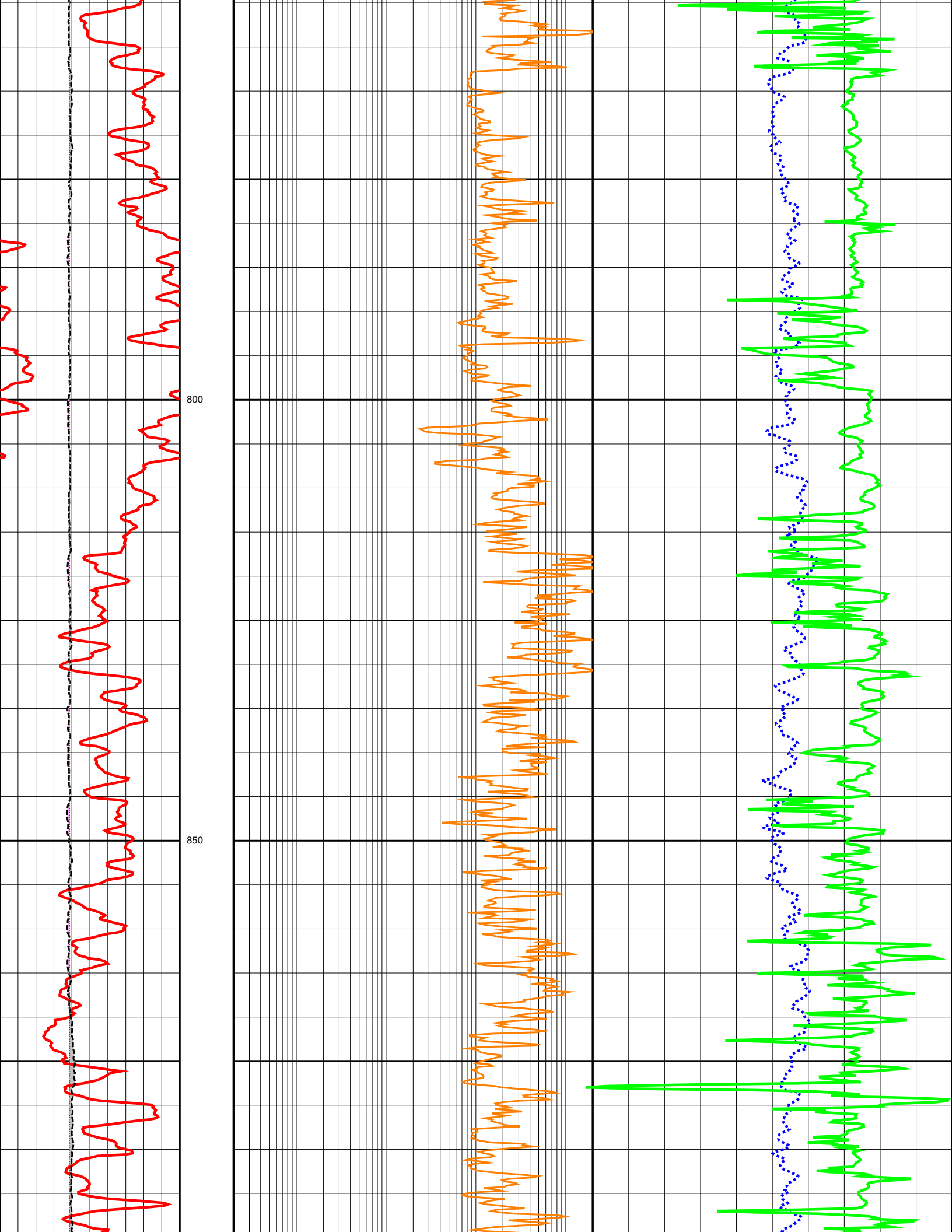


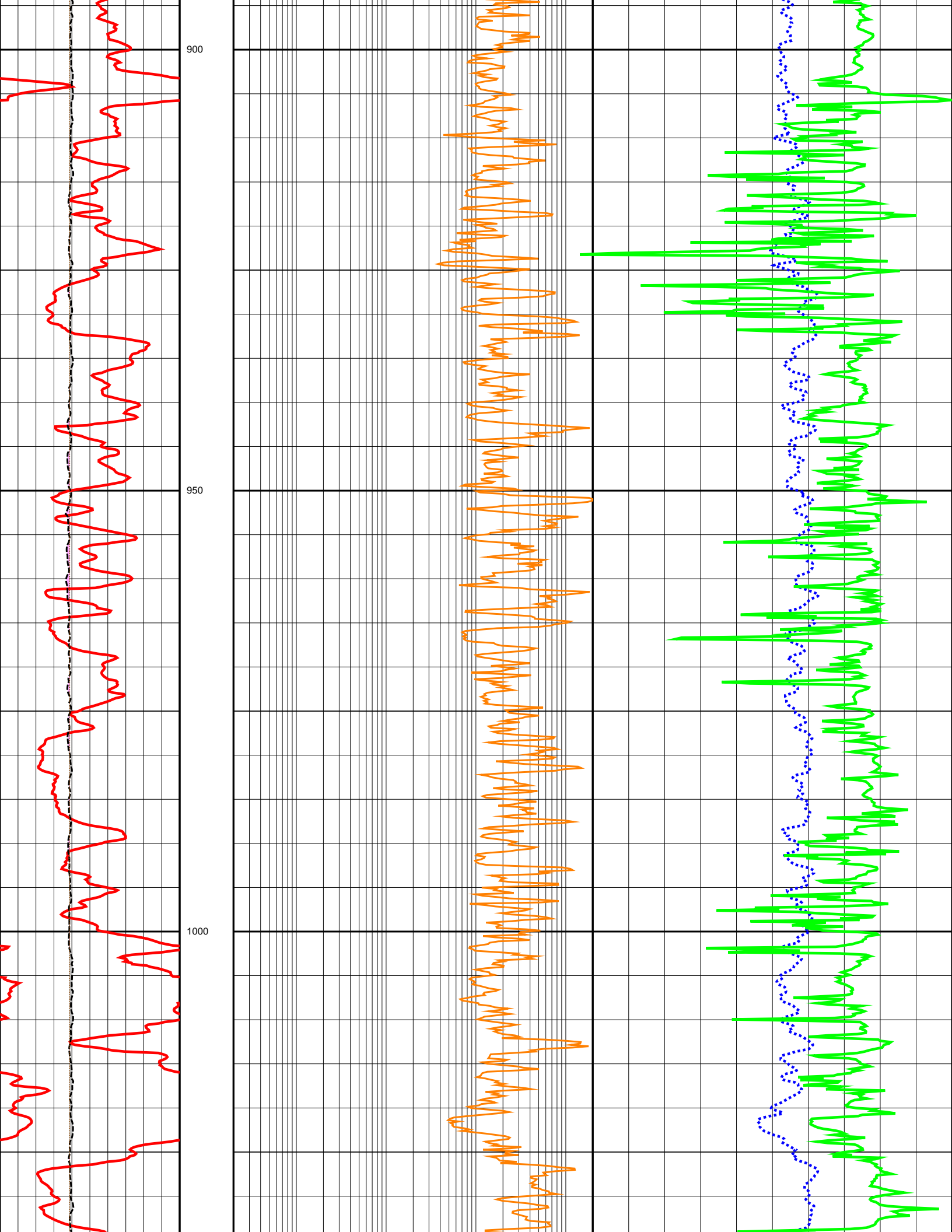


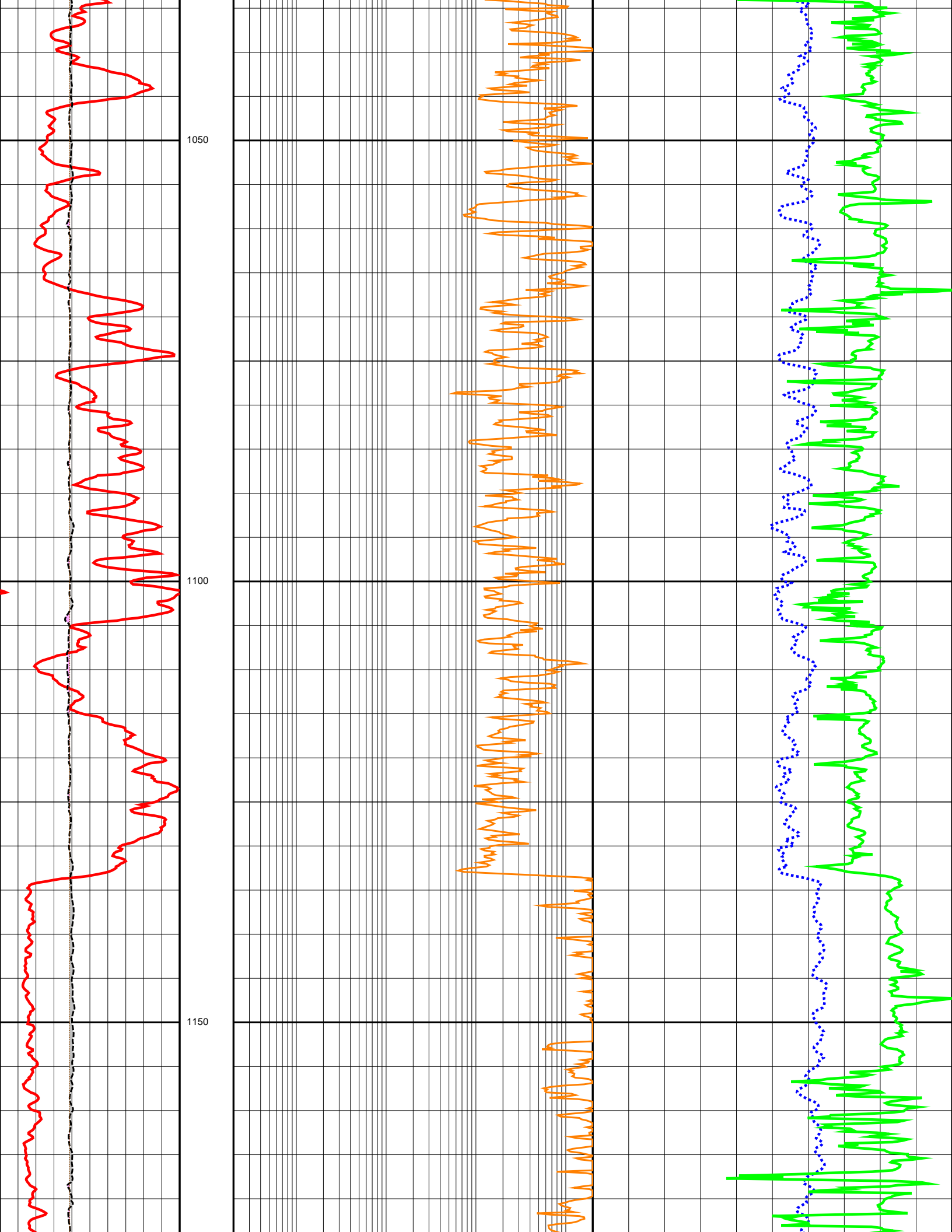


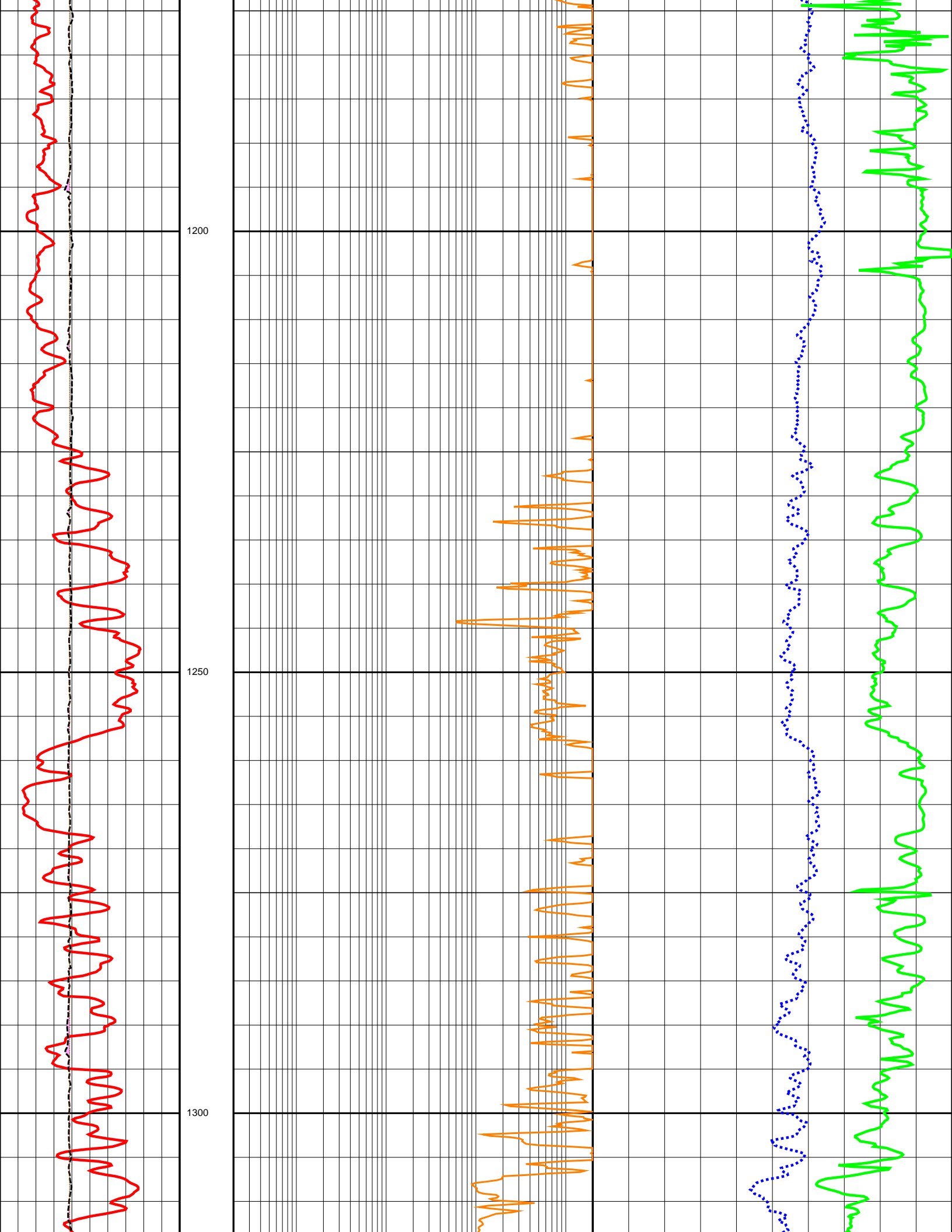


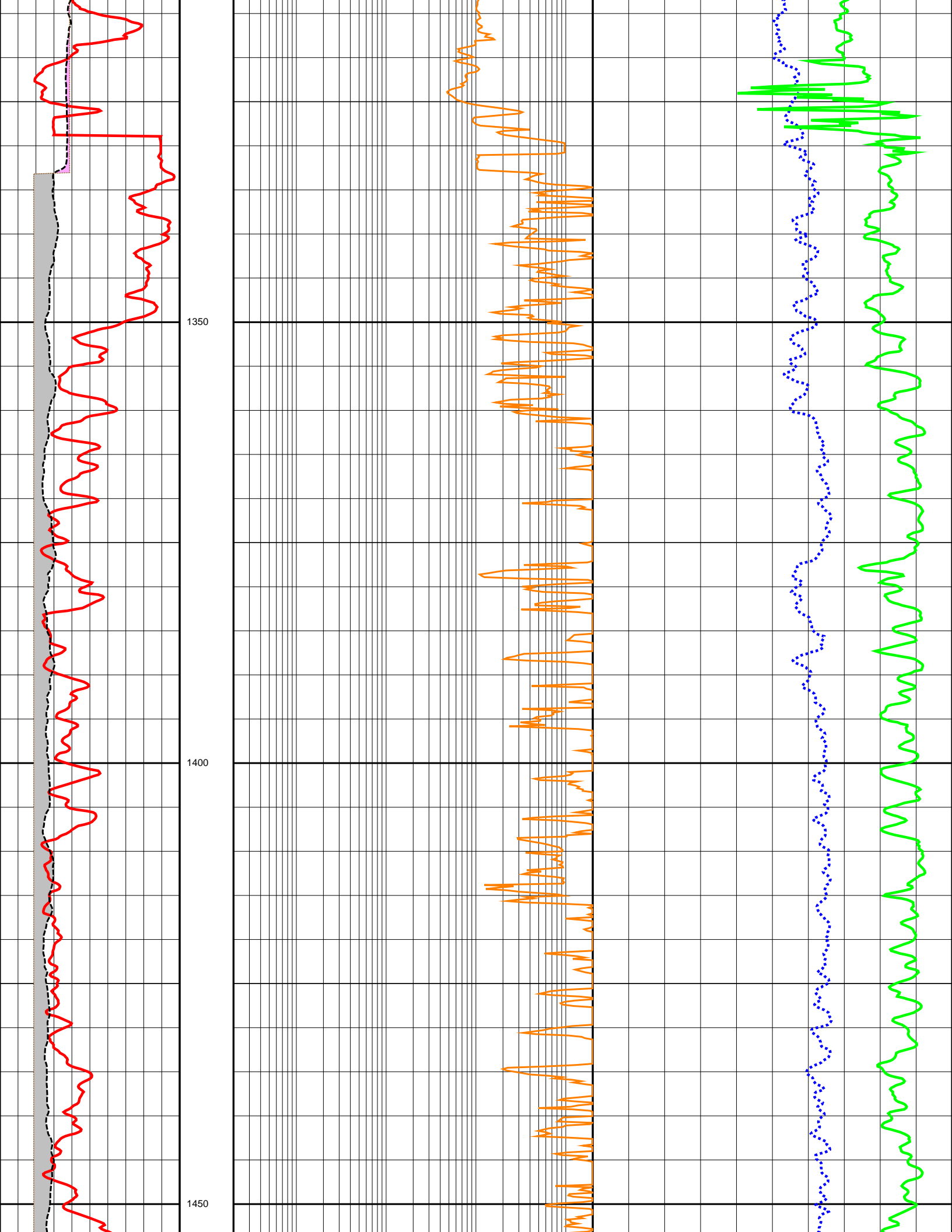


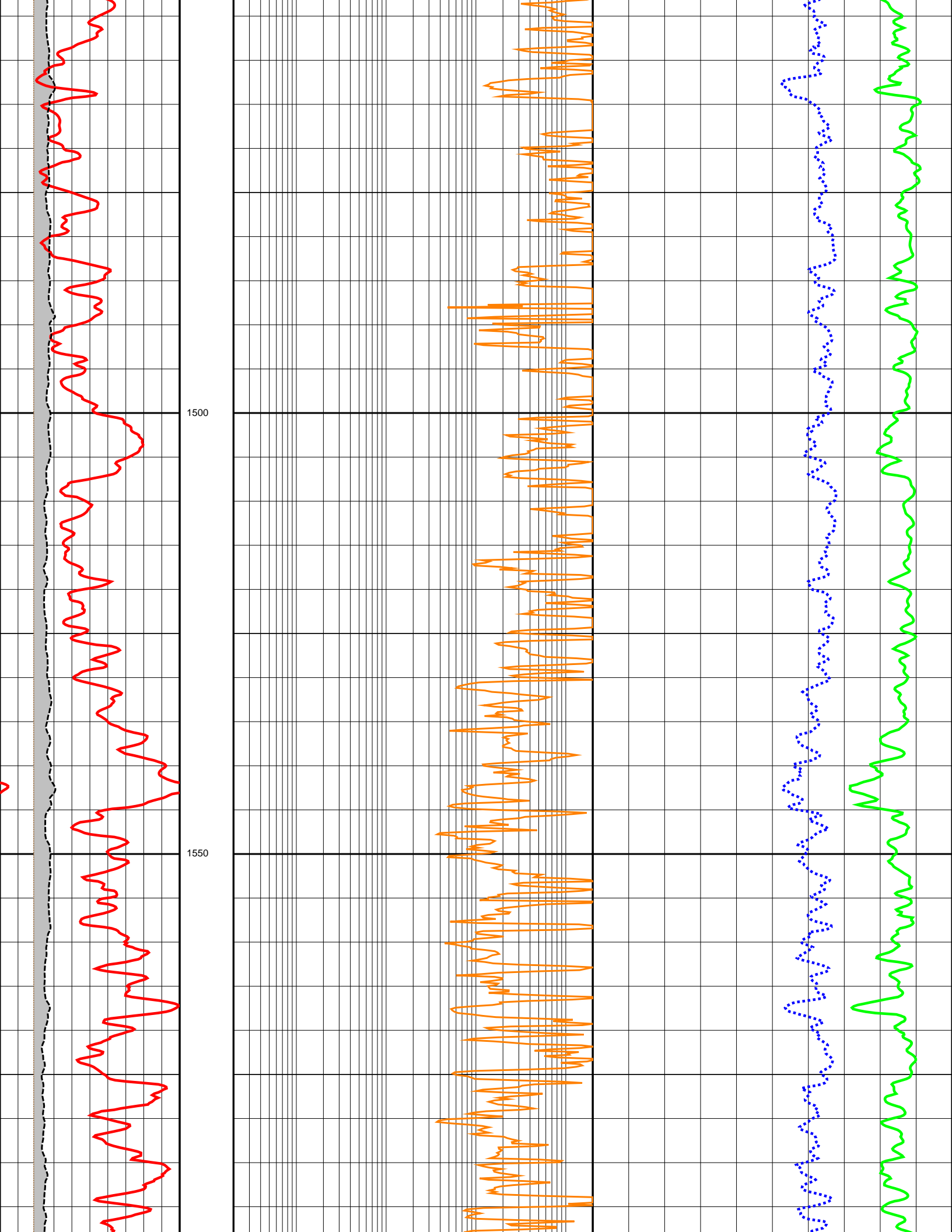


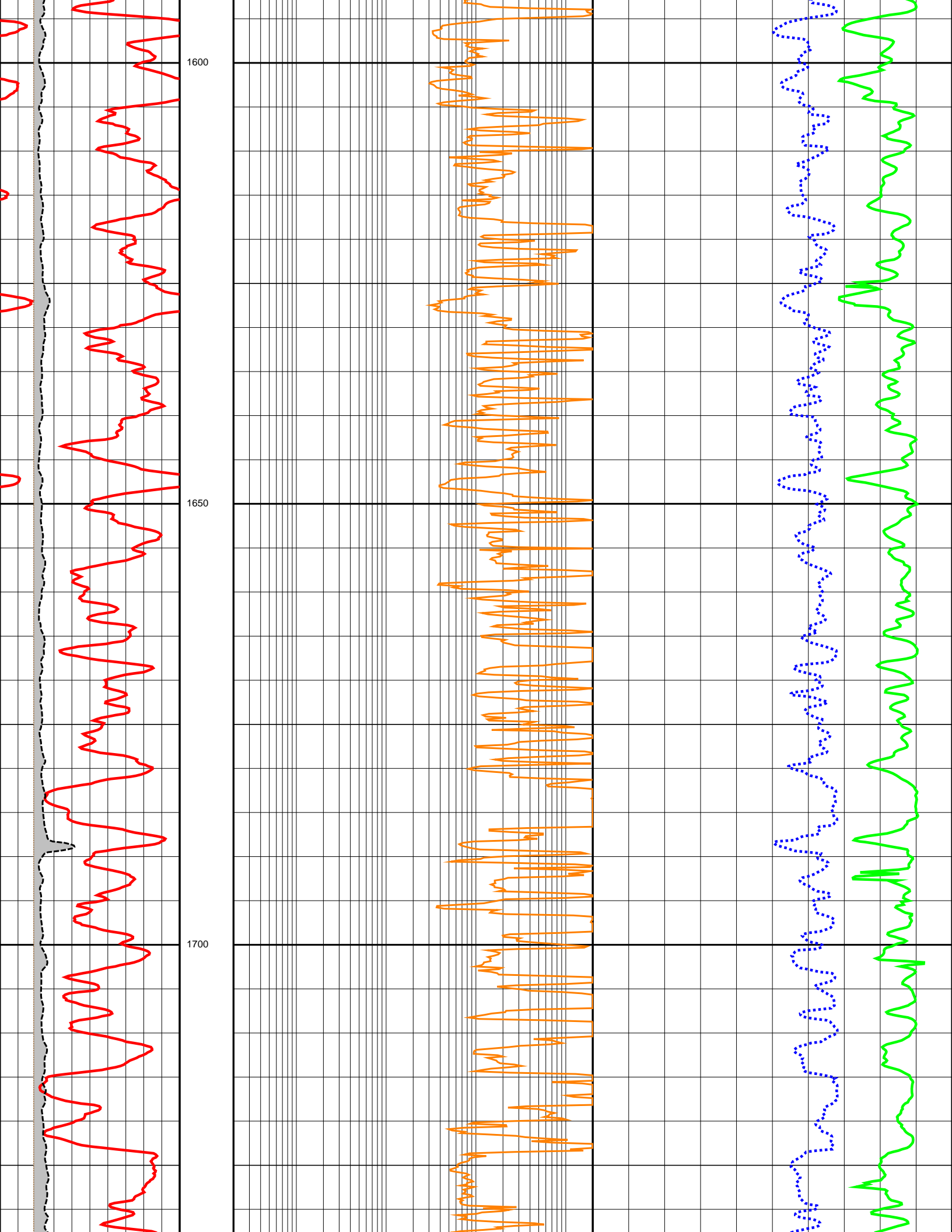


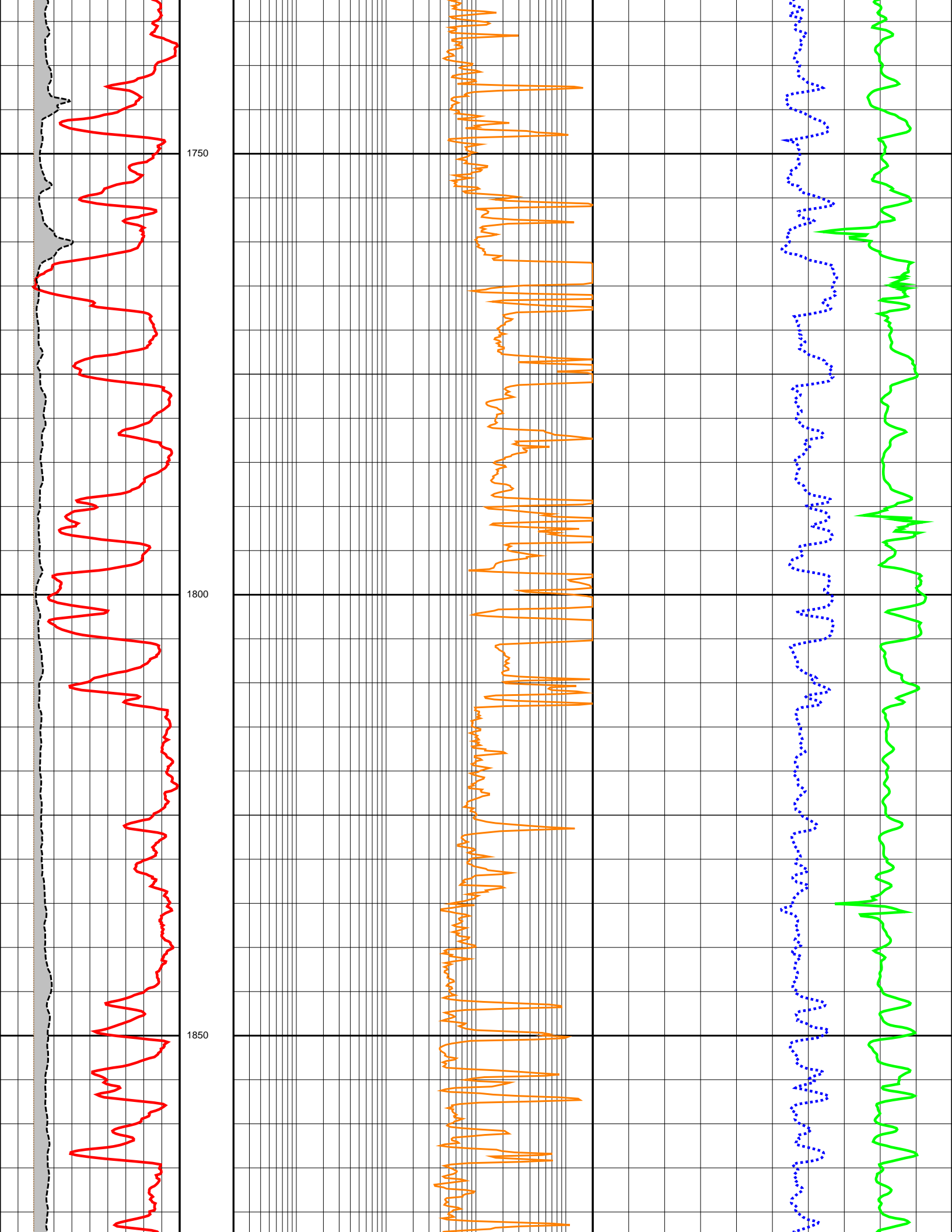


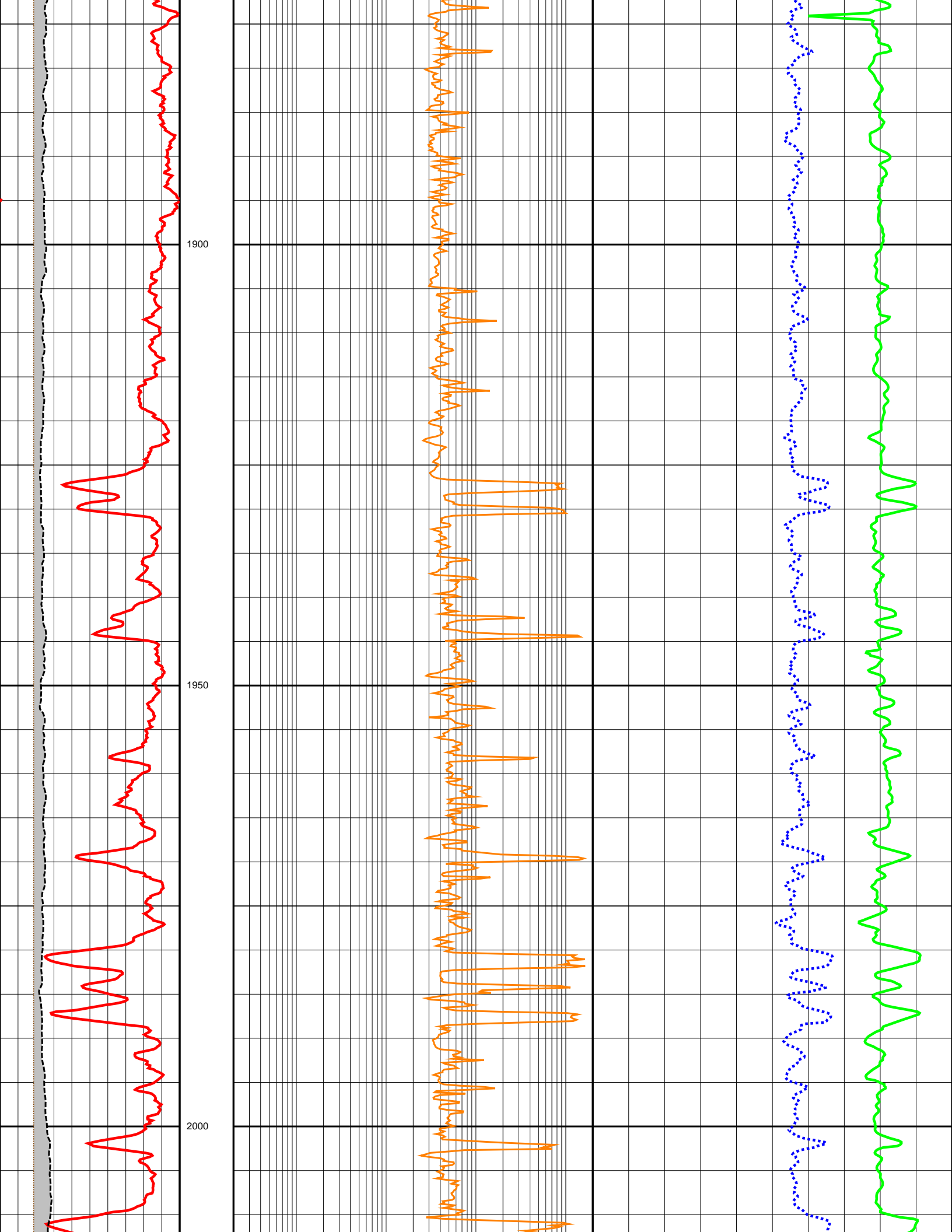


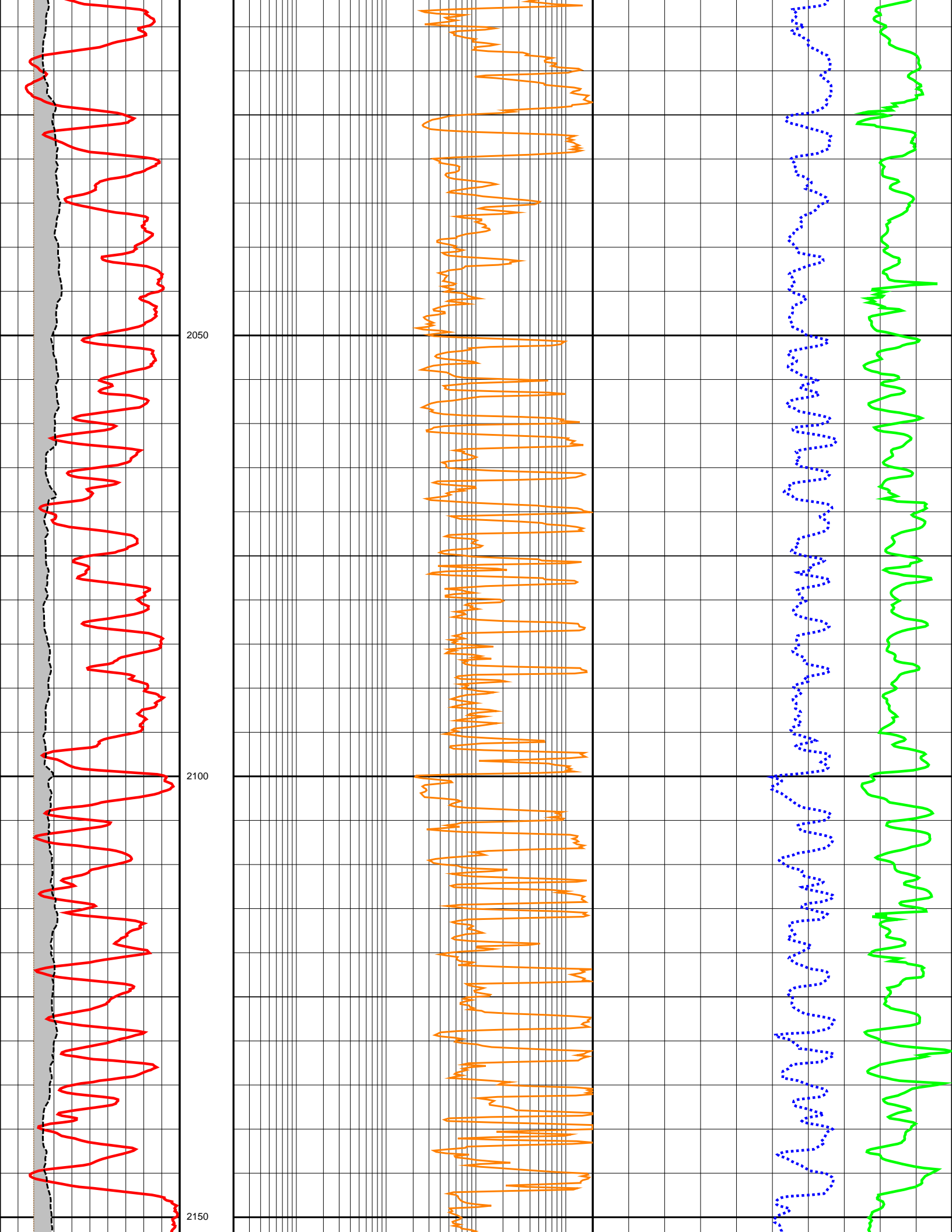


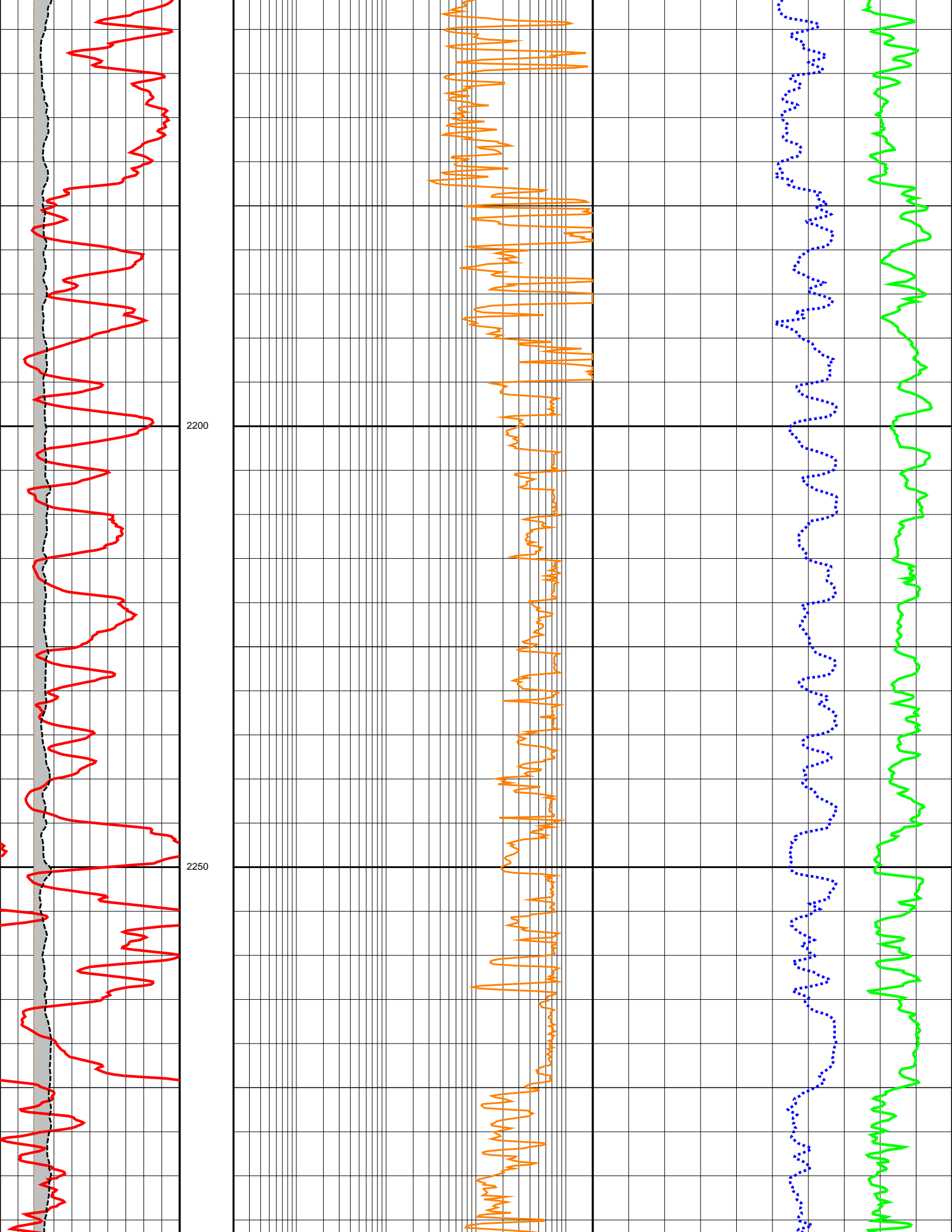


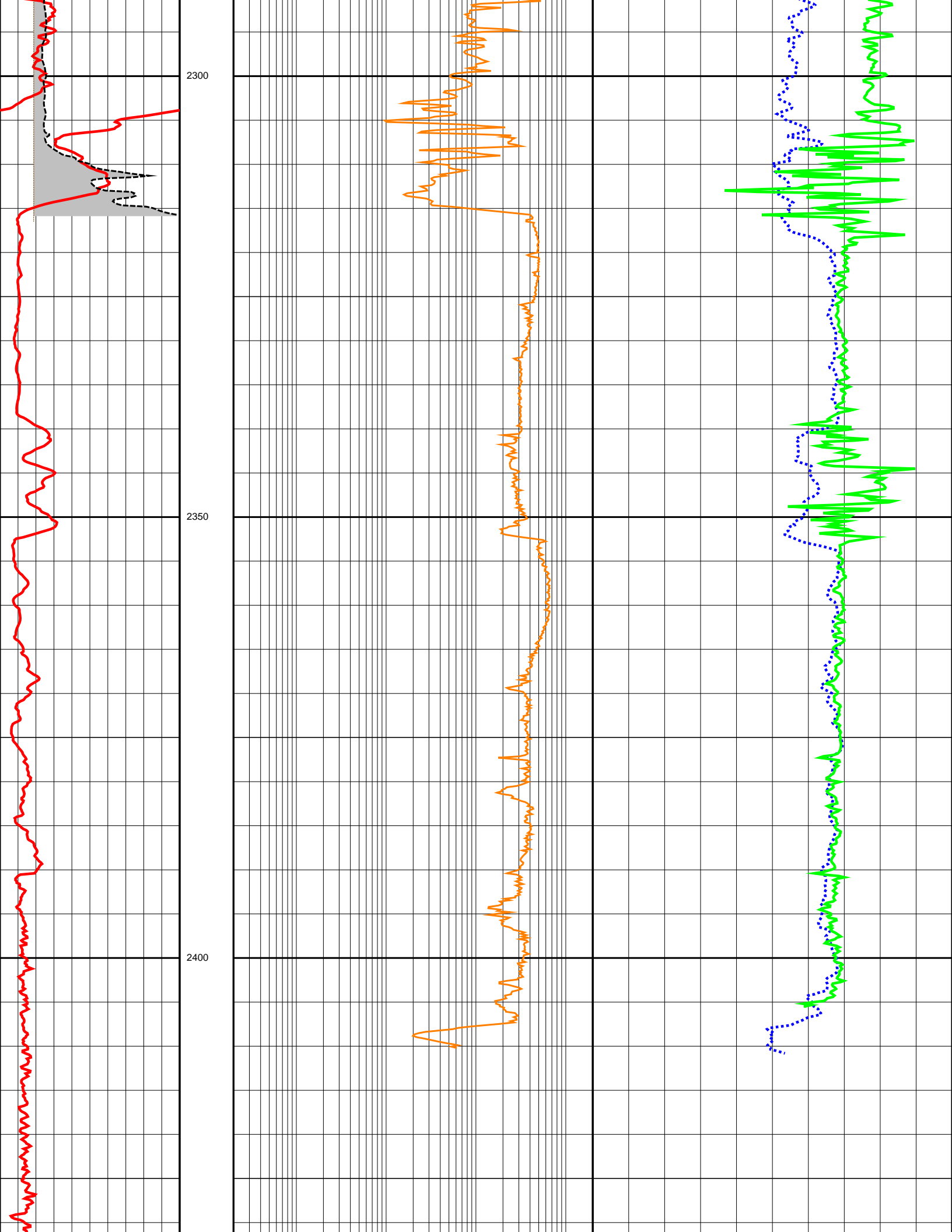


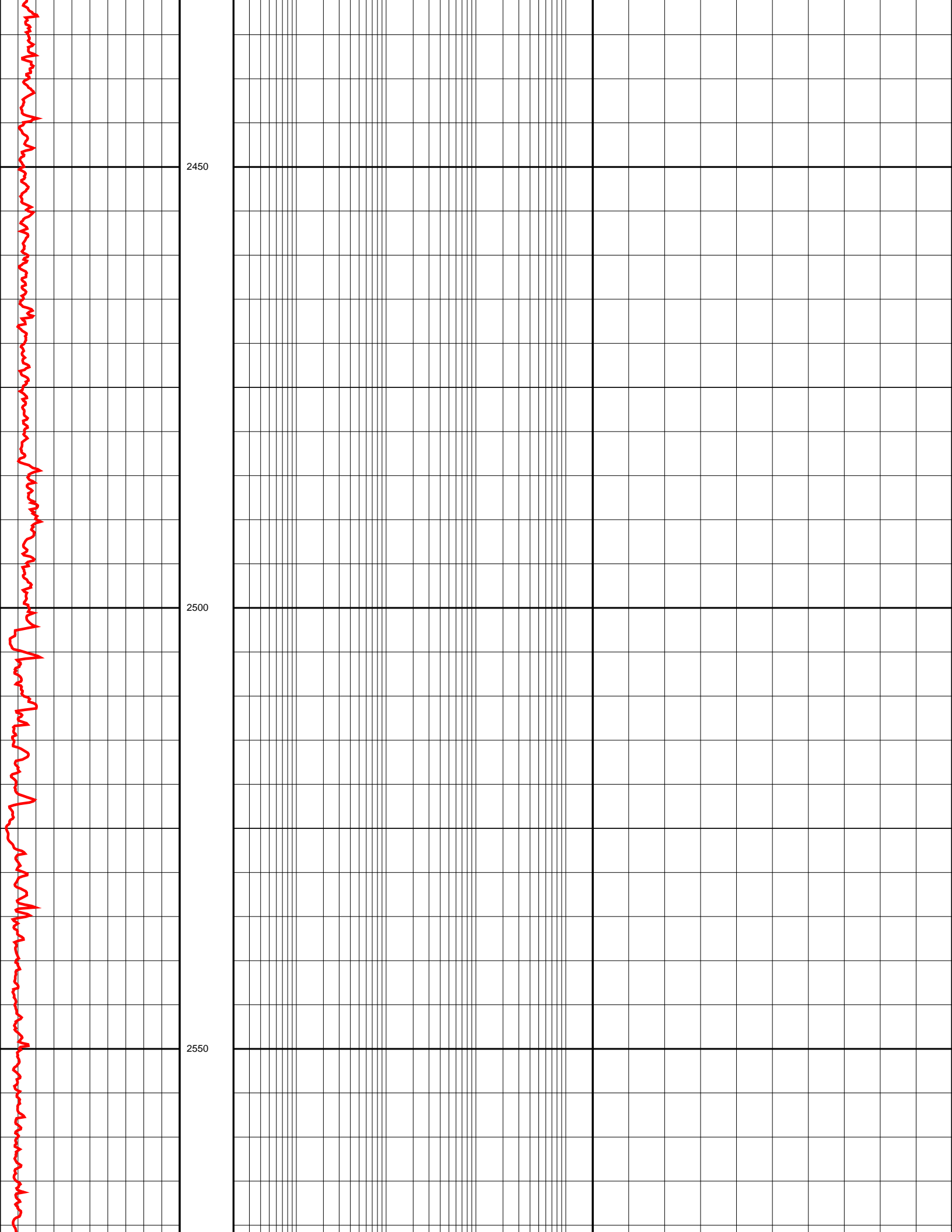












0.0	GR (API)	200.0	DEPTH	0.2	LL3 (OHMM)	2000.0	0.45	NPHI (V/V)	-0.15
6.0	CALI (INCH)	16.0	M				140.0	DT (US/F)	40.0
6.0	BS (INCH)	16.0	1:500						