

Orange #2

Composite Logs

Company	PANCONTINENTAL PETROLEUM PTY LTD
Well Name	ORANGE #2
Field	ORANGE
Country	AUSTRALIA
State	NORTHERN TERRITORY
Latitude	024 02' 12.130" S DMS
Longitude	133 46' 53.540" E DMS
Perm. Datum	MSL
Elevation Perm. Datum	0.00 M
Elevation KB (wrt EPD)	589.06 M
Elevation DF (wrt EPD)	588.76 M
Elevation GL (wrt EPD)	582.26 M
Elev. Log Zero (wrt EPD)	589.06 M
Above Perm. Datum	589.06 M
Log measured from	KB
Drill measured from	KB
Services	BHC-GR
Other Services Ln 1	DLL-MSFL-GR
Other Services Ln 2	LDL-CNL-NGS
Other Services Ln 3	CIS
Other Services Ln 4	HDT
Other Services Ln 5	CBL-VDL-GR
Date Plotted	Wednesday, 7 October 2009
Time Plotted	2:41:39 PM

Run Information

Run number	2 Aug 84	18 Oct 84	26 Oct 84	26 Oct 84	
Depth-Driller	807.50 M	2950.00 M	2950.00 M	2950.00 M	
Depth-Logger	807.80 M	2948.20 M	2937.50 M	2937.50 M	
Bottom log interval	804.00 M	2947.00 M	2875.00 M	2875.00 M	

Top log interval	169.00 M	2511.00 M	2825.00 M	2825.00 M	
Casing-Driller	97.00 M	804.00 M	2512.00 M	2938.00 M	
Casing-Logger	96.70 M	804.00 M	2511.00 M	2937.00 M	
Casing Diameter	20.000 INCH	13.375 INCH	9.625 INCH	7.000 INCH	
Casing Weight	94.00 LB/F3	61.00 LB/F3	47.00 LB/F3	29.00 LB/F3	
Casing Depth	97.00 M	806.00 M	2515.00 M	2950.00 M	
Bit Size	17.500 INCH	17.500 INCH	12.250 INCH	8.500 INCH	
Hole Fluid type	FRESH WATER	KCL POLYMER	KCL POLYMER	KCL POLYMER	
Fluid Density	3.500 G/CC	1.150 G/CC	1.150 G/CC	1.150 G/CC	
Fluid Viscosity	29.00 SEC	44.00 SEC	44.00 SEC	44.00 SEC	
Fluid PH	7	10.5	10.5	10.5	
Fluid Loss		6.03 C3	6.03 C3	6.03 C3	
Mud Sample Source	FLOWLINE	FLOWLINE	FLOWLINE	FLOWLINE	
RM @ Surface	3.500 OHMM	0.050 OHMM	0.050 OHMM	0.050 OHMM	
Mud temp @ Surface	73.00 DEGC	21.10 DEGC	21.10 DEGC	21.10 DEGC	
RMF @ Surface		0.047 OHMM	0.047 OHMM	0.047 OHMM	
MF temp @ Surface		21.10 DEGC	21.10 DEGC	21.10 DEGC	
RMC @ Surface		0.052 OHMM	0.052 OHMM	0.052 OHMM	
MC temp @ Surface		23.30 DEGC	23.30 DEGC	23.30 DEGC	
Mud Filtrate Sample Source		PRESS	PRESS	PRESS	
Mud Cake Sample Source		PRESS	PRESS	PRESS	
RM @ Bottom	2.700 OHMM	0.020 OHMM	0.020 OHMM	0.020 OHMM	
Mud temp @ Bottom	94.00 DEGC	82.00 DEGC	82.00 DEGC	82.00 DEGC	
RMF @ Bottom		0.019 OHMM	0.019 OHMM	0.019 OHMM	
MF temp @ Bottom		82.00 DEGC	82.00 DEGC	82.00 DEGC	
RMC @ Bottom		0.022 OHMM	0.022 OHMM	0.022 OHMM	
MC temp @ Bottom		82.00 DEGC	82.00 DEGC	82.00 DEGC	
Time circ. stopped	23:00	01:00	01:00	01:00	
Date circ. stopped	1-08-1984	18-10-84	18-10-84	18-10-84	
Time logger at btm	04:30	15:00	15:00	15:00	
Date logger at btm	2-08-1984	18-10-84	18-10-84	18-10-84	
Surface hole temp	94.00 DEGC	82.00 DEGC	82.00 DEGC	82.00 DEGC	
Bottom hole temp	94.00 DEGC	82.00 DEGC	82.00 DEGC	82.00 DEGC	
Logging unit No	DDL05	2667	2667	2667	
Logging unit Loc	ADELAIDE	QEA	QEA	QEA	
Logging Company ID	L. WHITE	T. LEROY	T. LEROY	T. LEROY	
Recorded by	C. HIGGINS	J.D. GORTER	M. MURTAGH	M. MURTAGH	
Range	12.2	12.2	12.2	12.2	

Logs loaded, edited and merged from LIS format file by CDP in June 2009
SP Log Baseline Shift and log smoothed
Well header information completed from scanned PDF well header

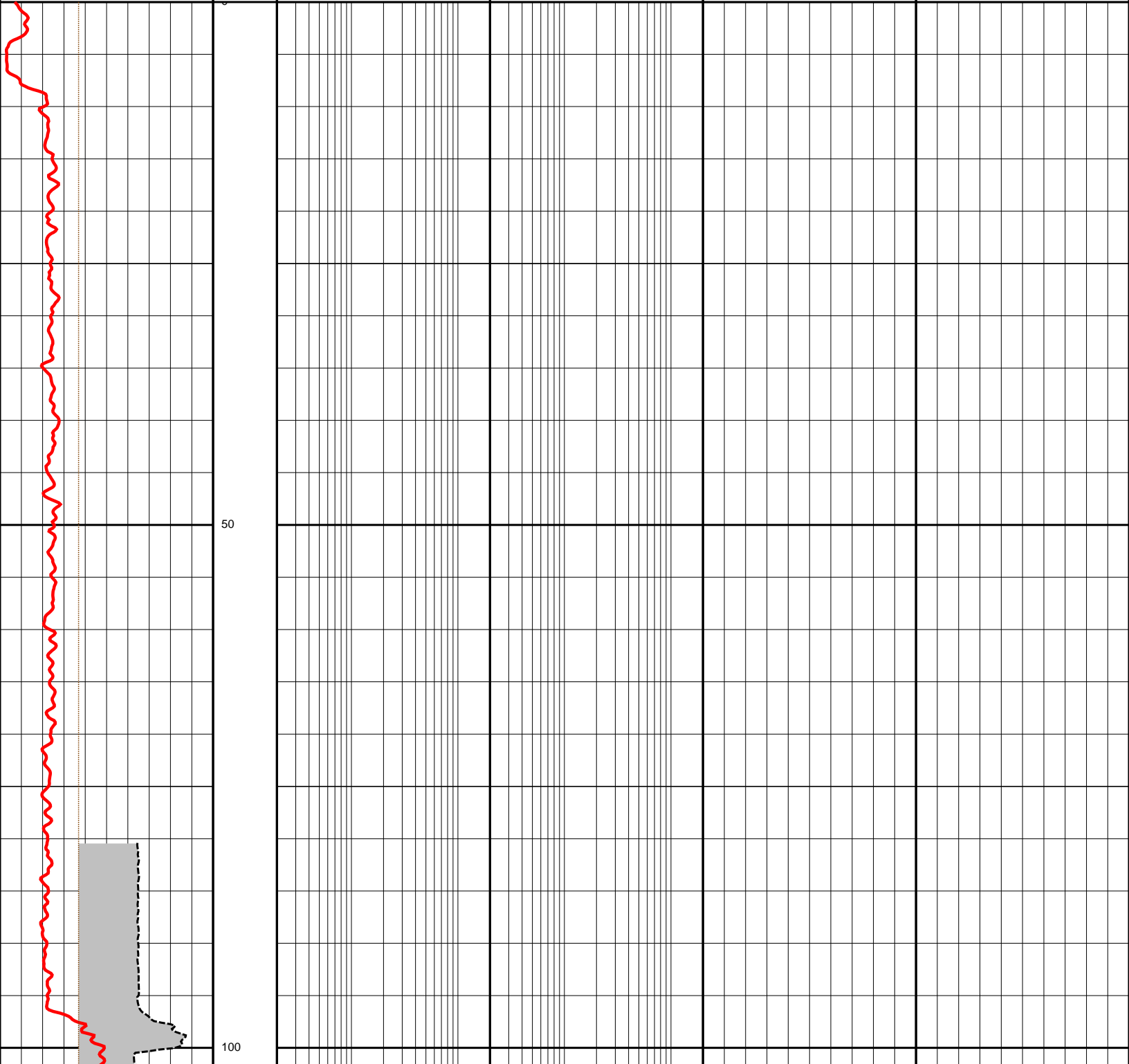
Since well log interpretations are opinions based upon inferences from well logs, we cannot and do not guarantee the correctness or accuracy of any interpretation. Therefore we shall not be liable or responsible for any loss, damage, cost or expense incurred or sustained by anyone resulting from any interpretation.

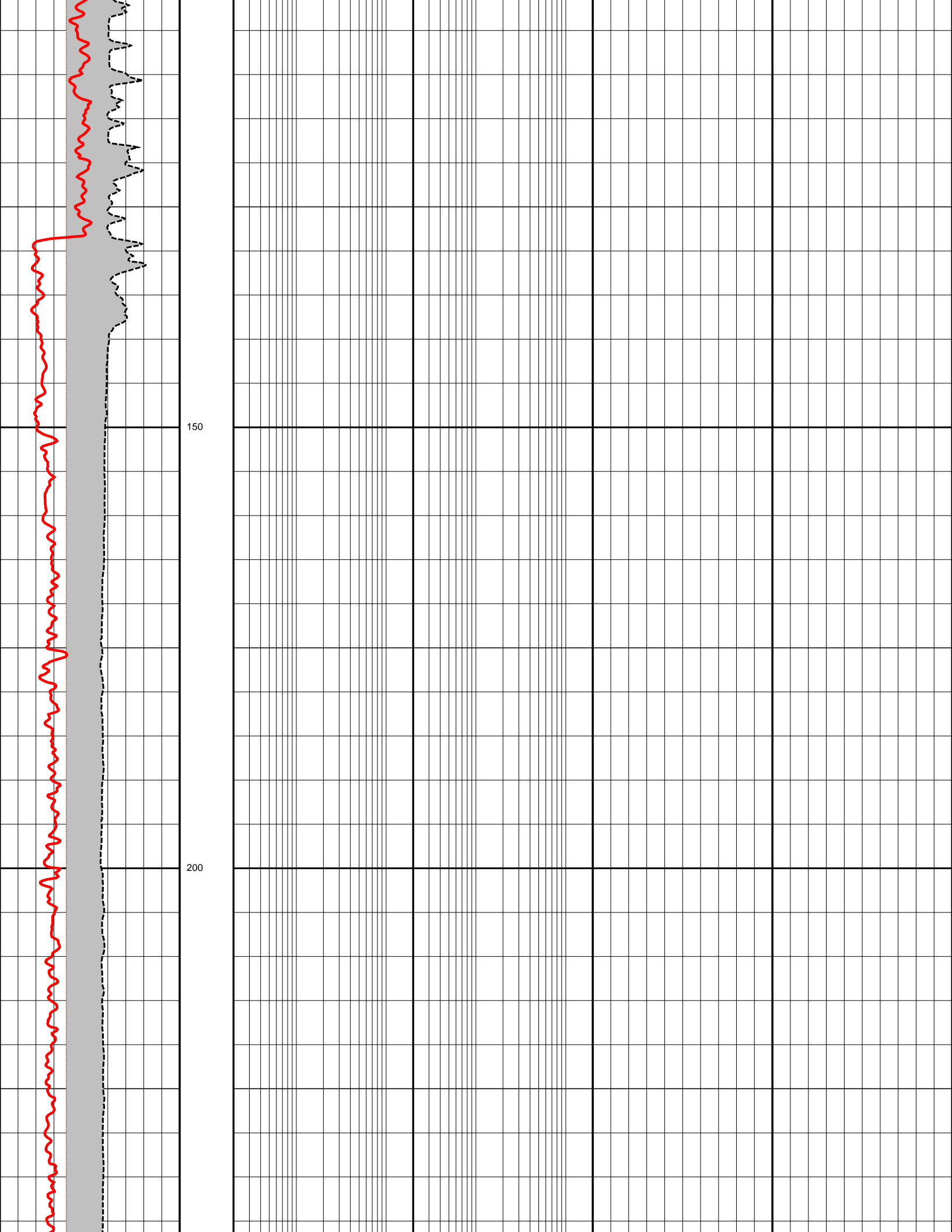
Log Description

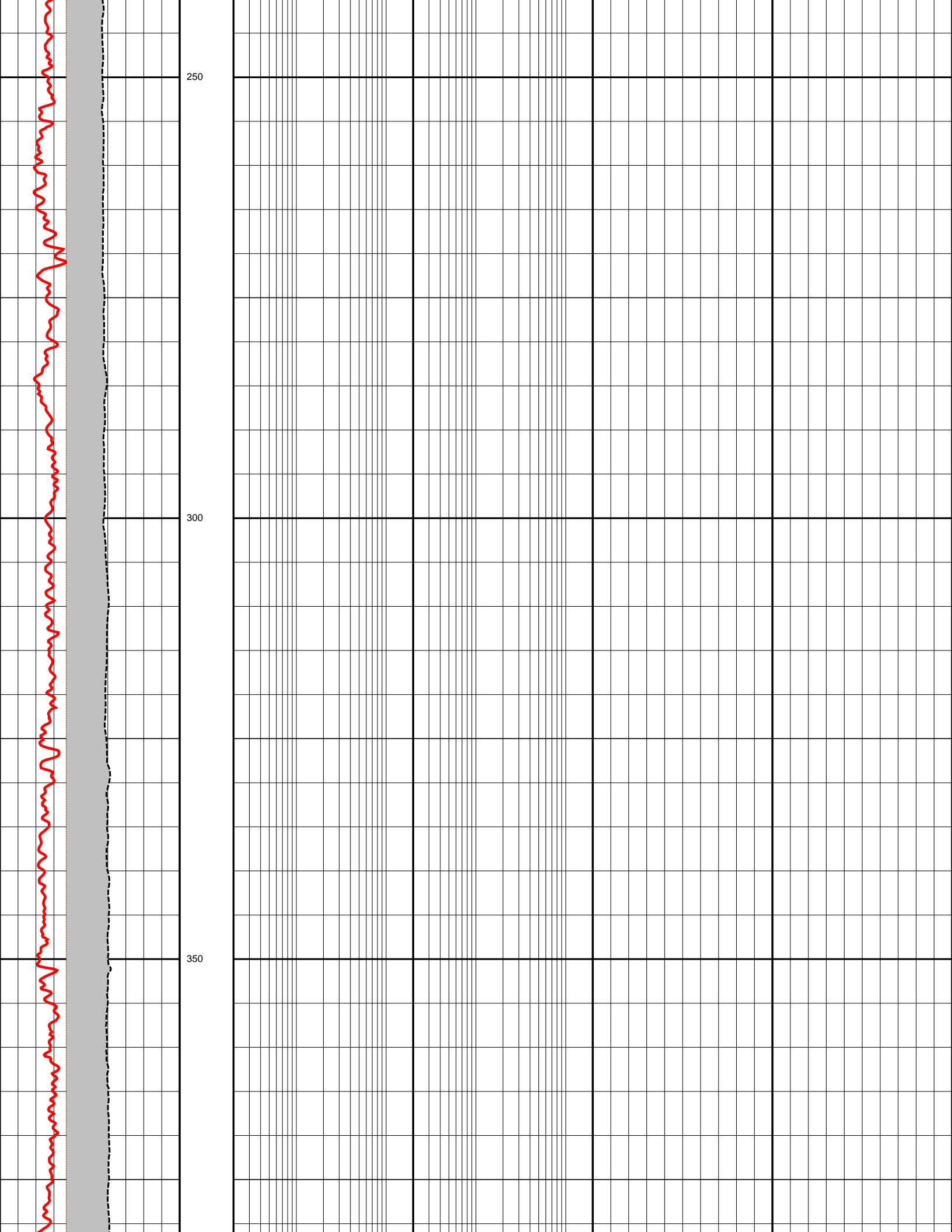
GR Gamma Ray
LLS Shallow Laterolog

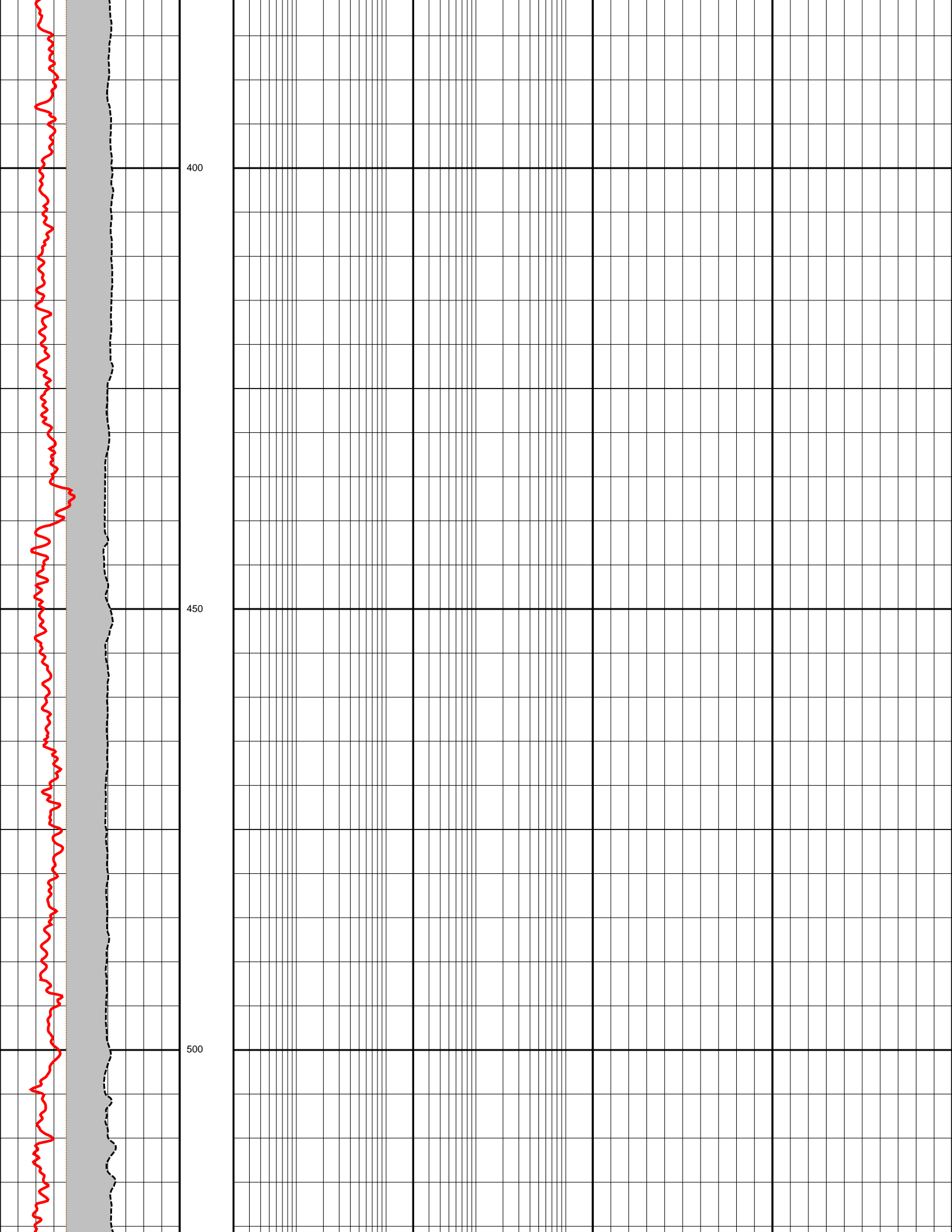
CALI	Caliper
RT	Formation Resistivity
SP	Spontaneous Potential Log
LLD	Laterolog Deep Resistivity
RHOB	Compensated Formation Density
NPHI	Neutron Porosity
PEF	Photoelectric Factor
DRHO	Density Correction
MSFL	Micro Spherically Focused Log
RXO	Flushed Zone Resistivity
BS	Bit Size

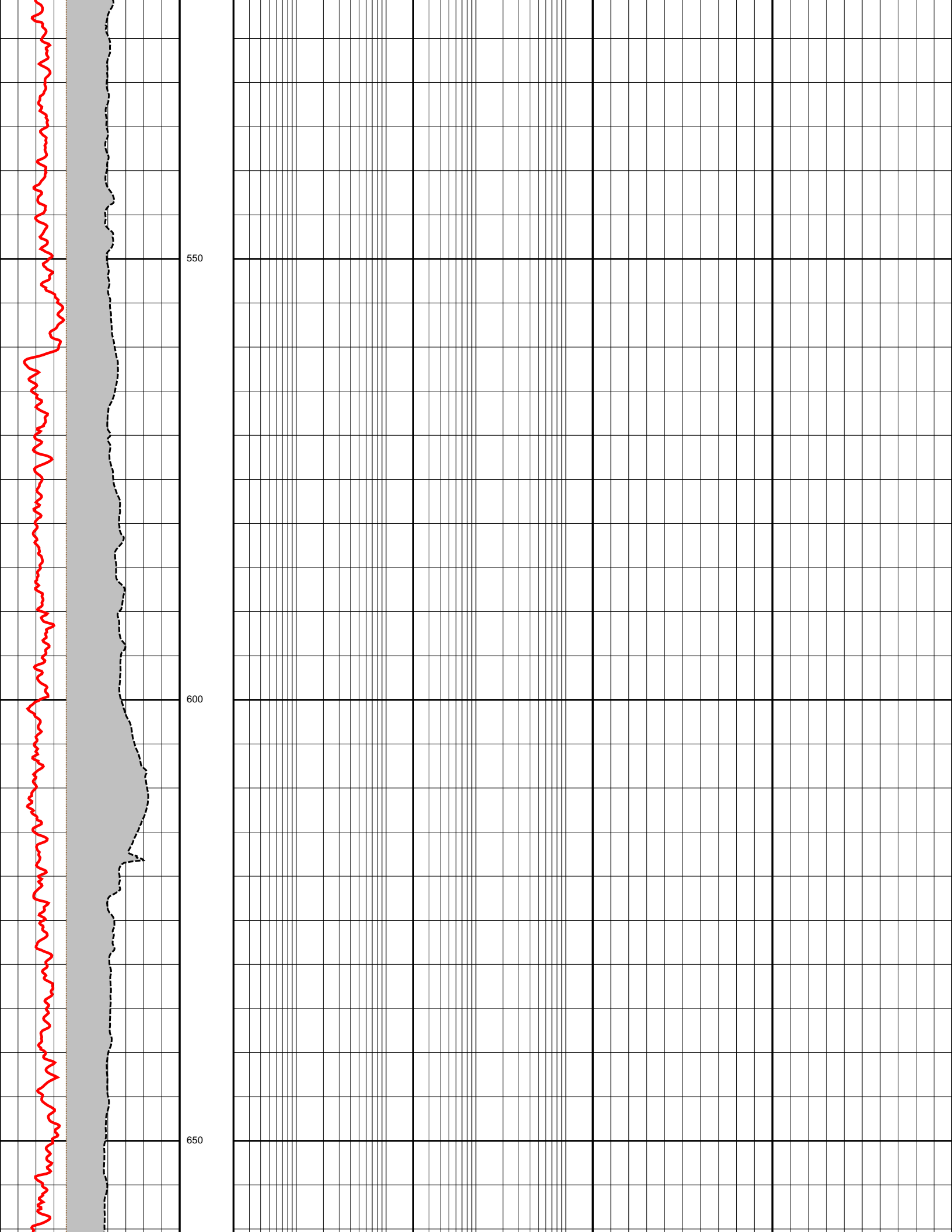
0.0	GR (API)	200.0	DEPTH	0.2	LLS (OHMM)	2000.0	1.95	RHOB (G/C3)	2.95
6.0	CALI (INCH)	26.0	M	0.2	RT (OHMM)	2000.0	0.45	NPHI (V/V)	-0.15
-80.0	SP (MV)	20.0	1:500	0.2	LLD (OHMM)	2000.0	0.0	PEF (B/E)	10.0
6.0	BS (INCH)	26.0		0.2	MSFL (OHMM)	2000.0		DRHO (G/C3)	0.25
				0.2	RXO (OHMM)	2000.0			

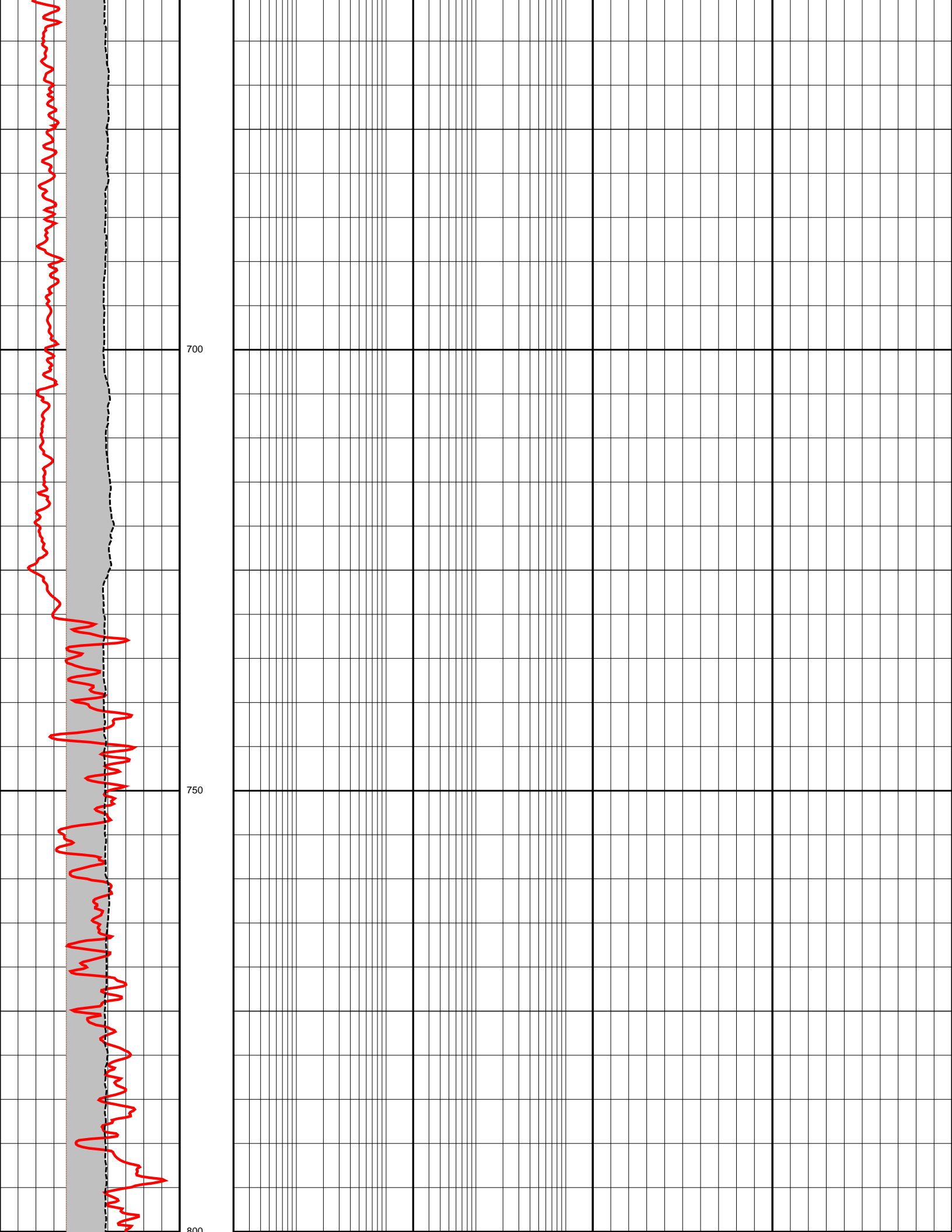


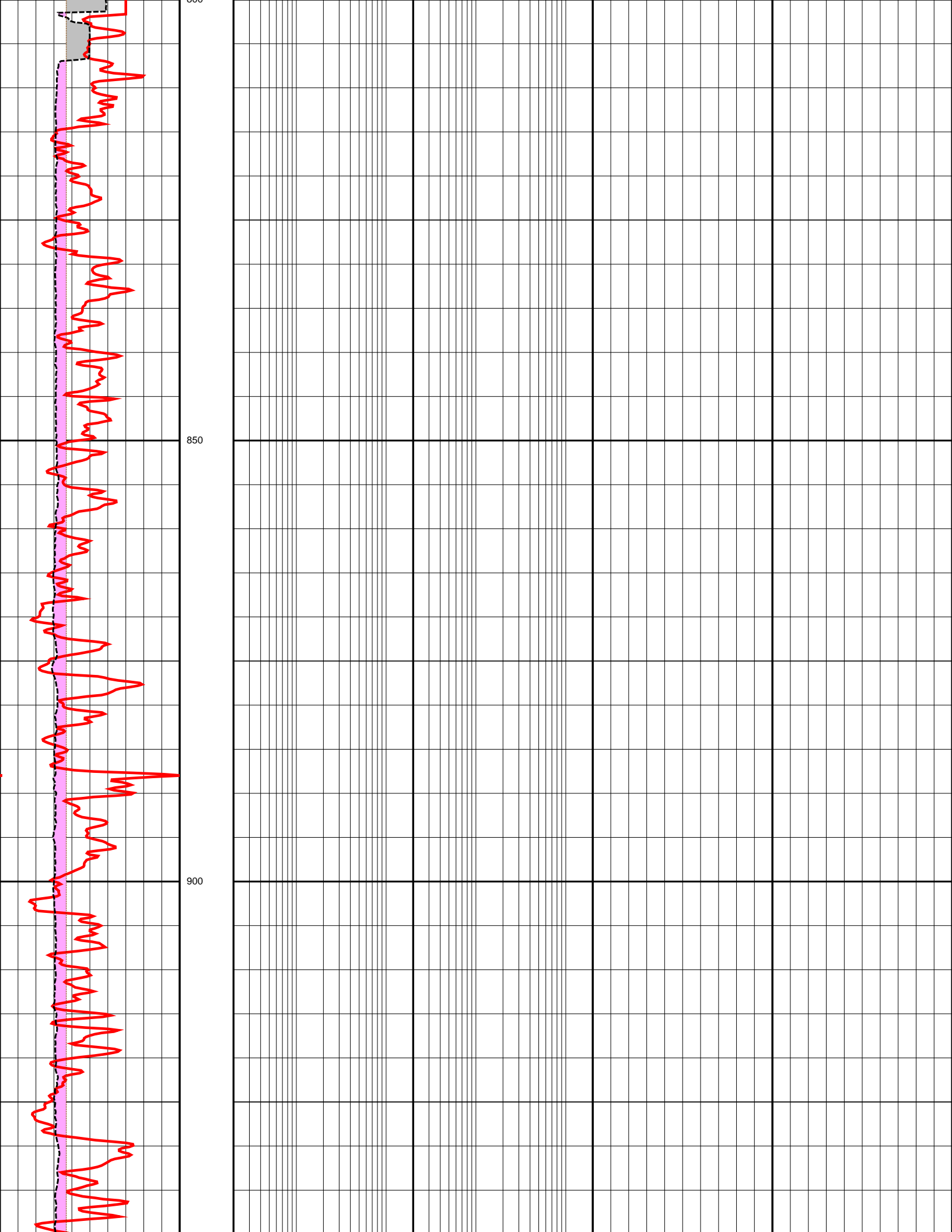


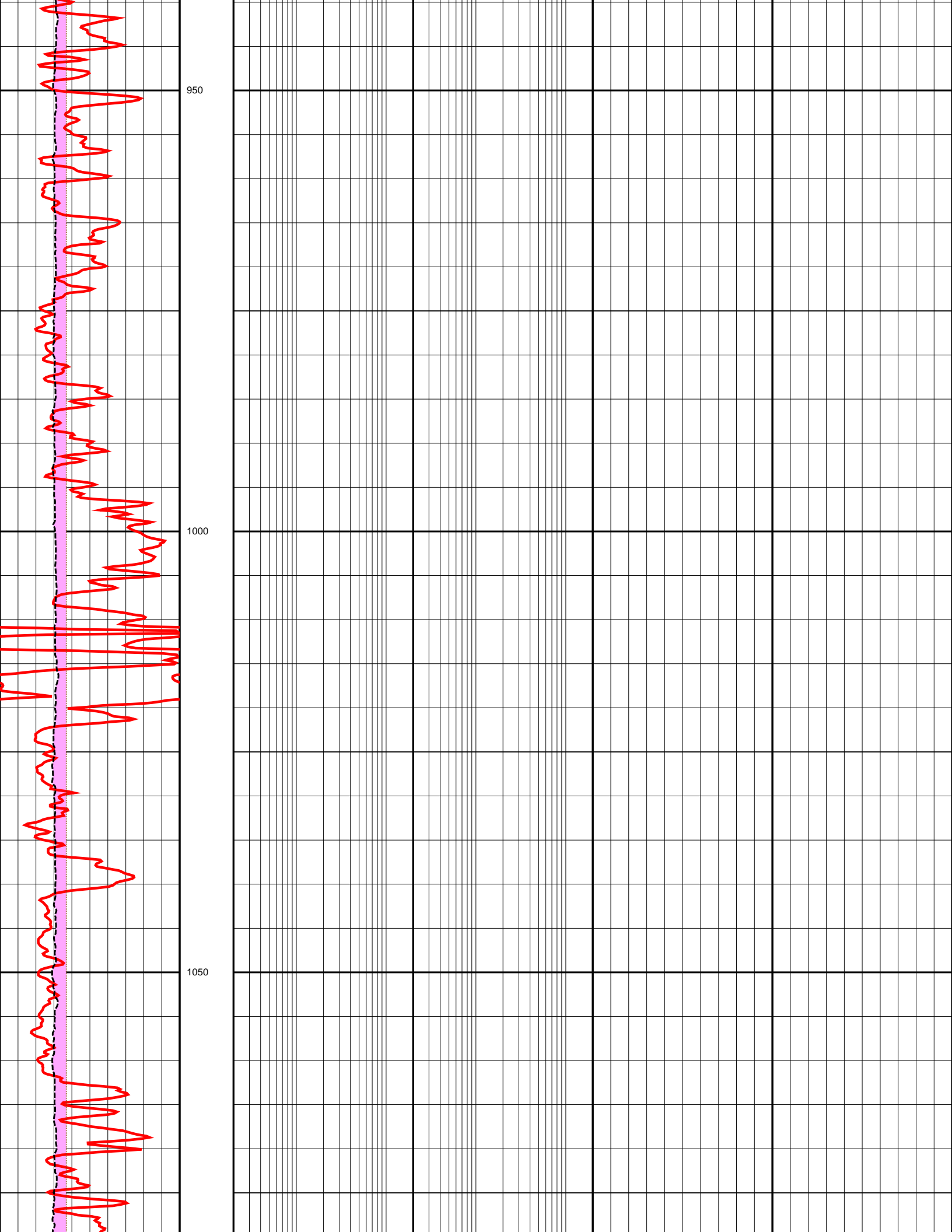


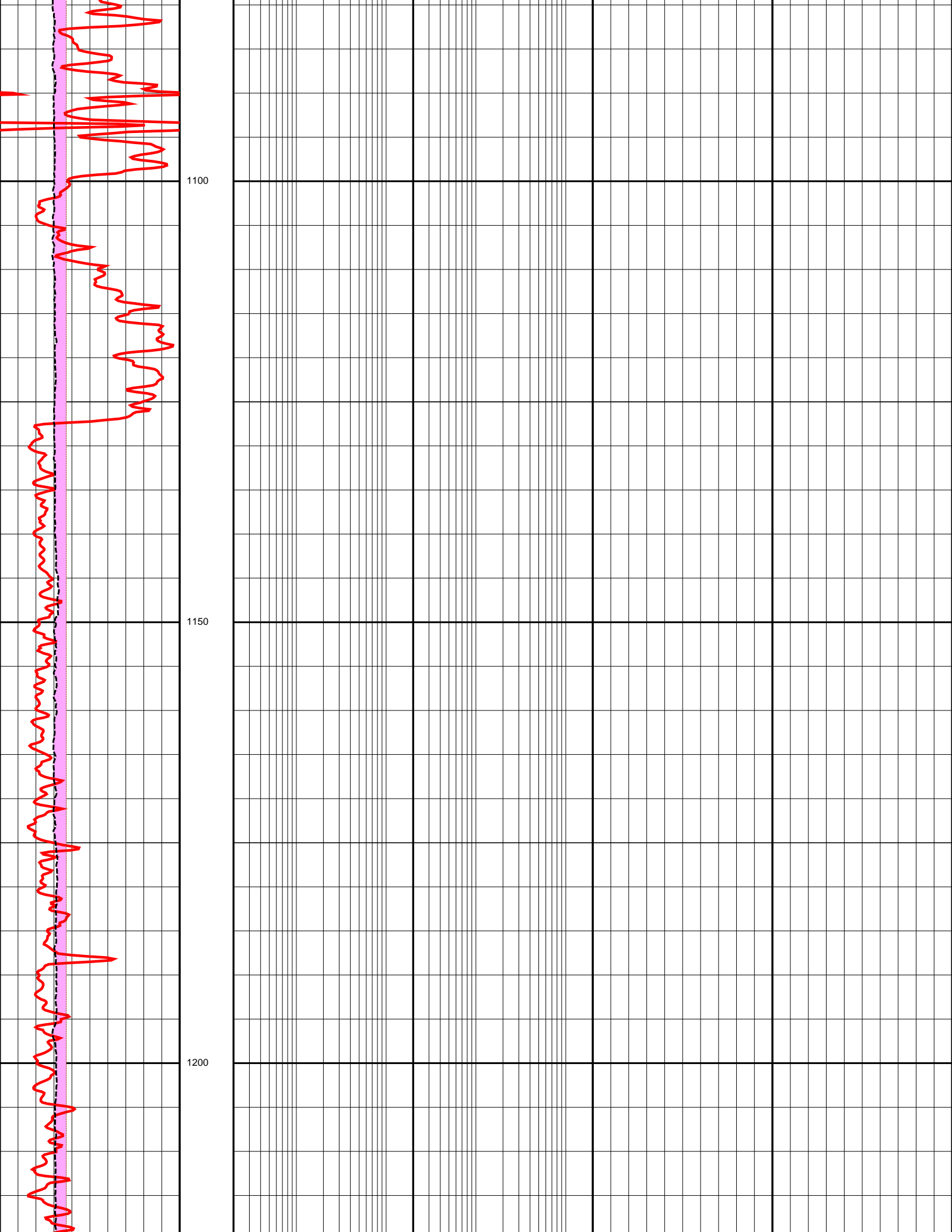


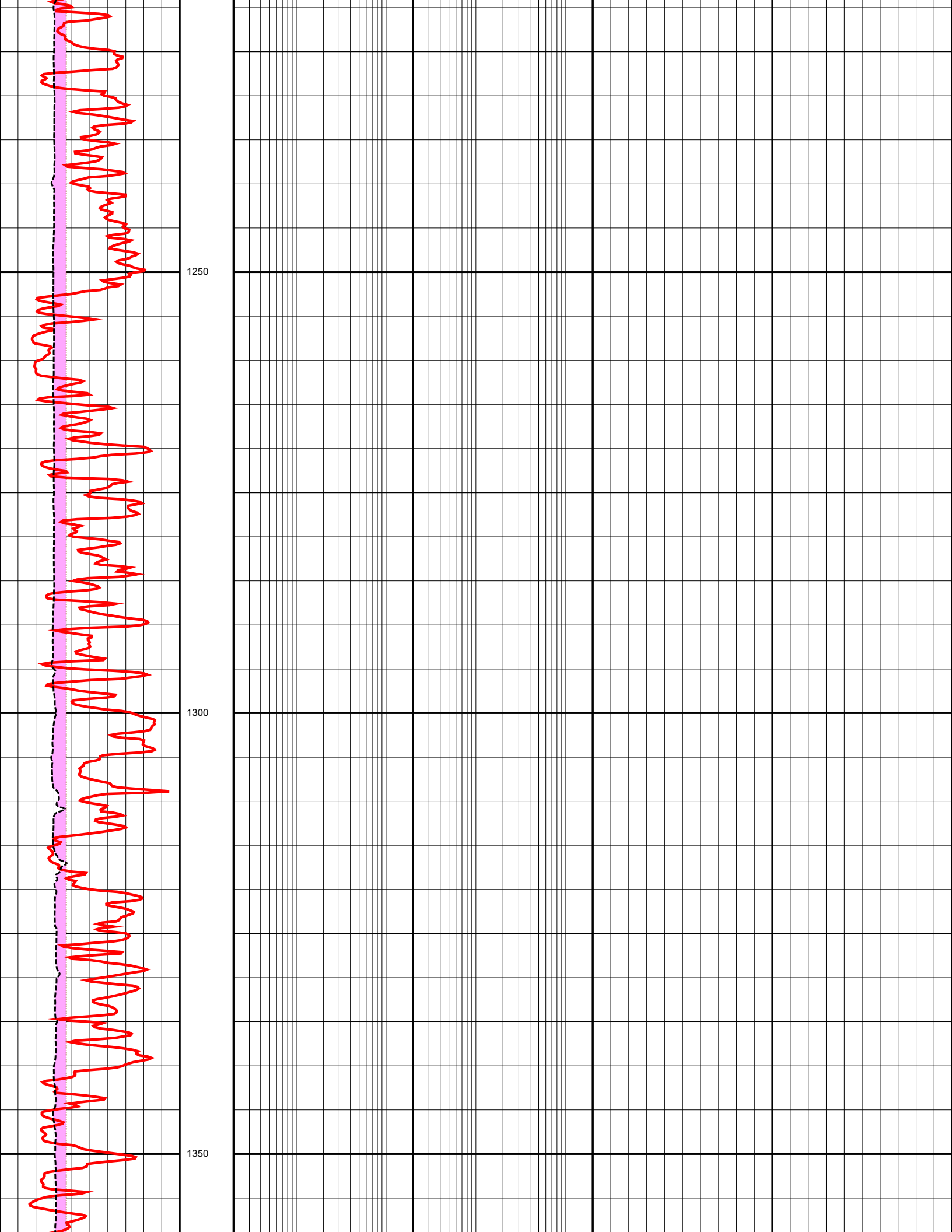


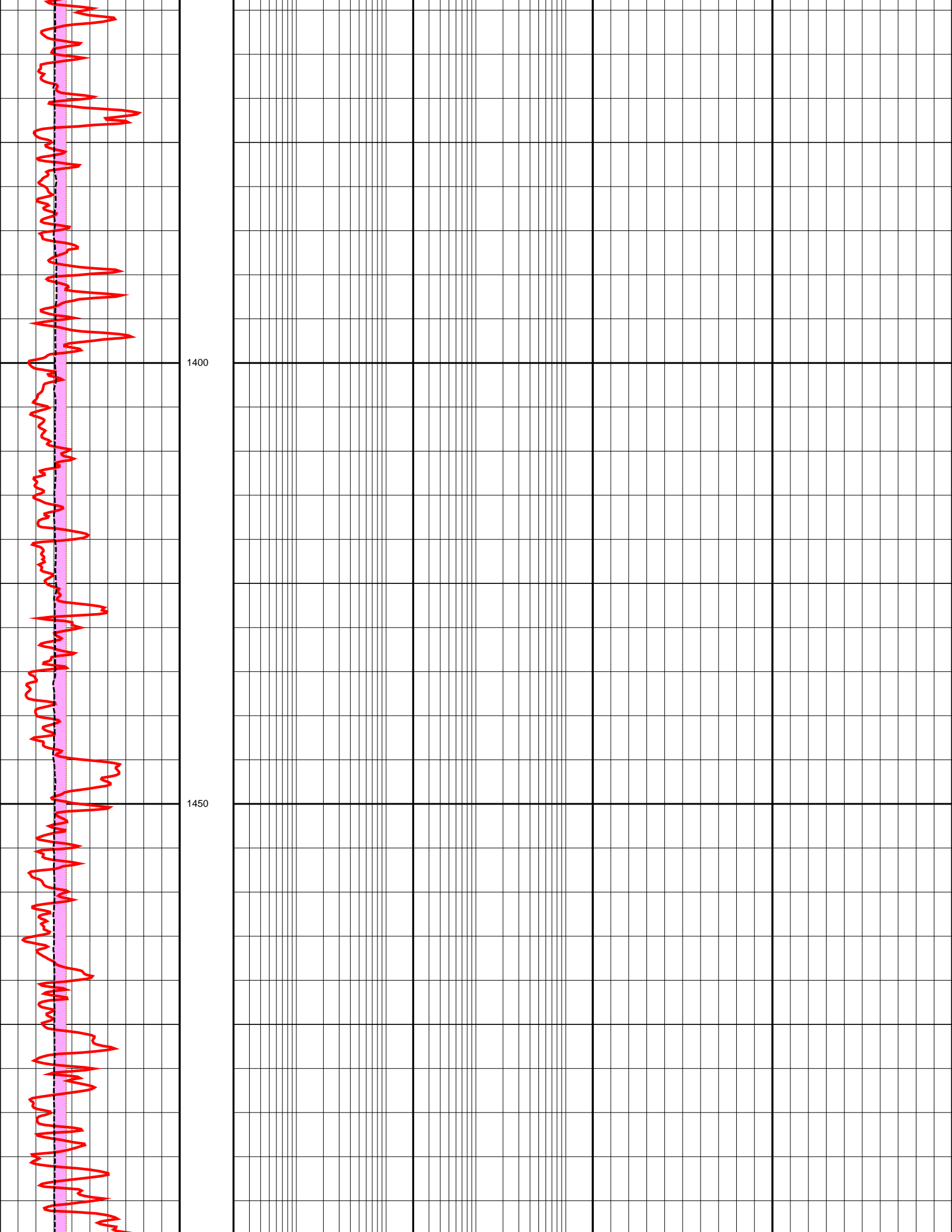


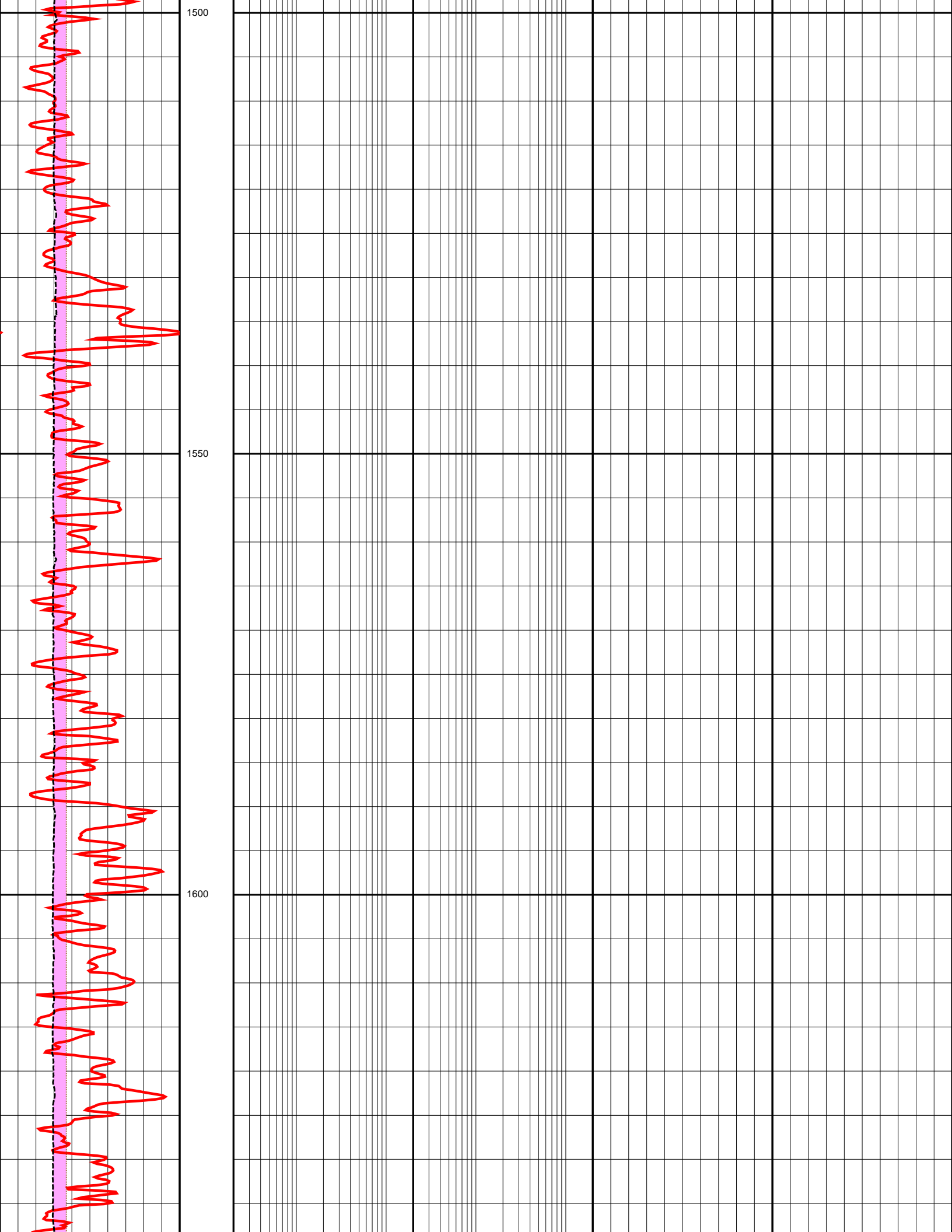


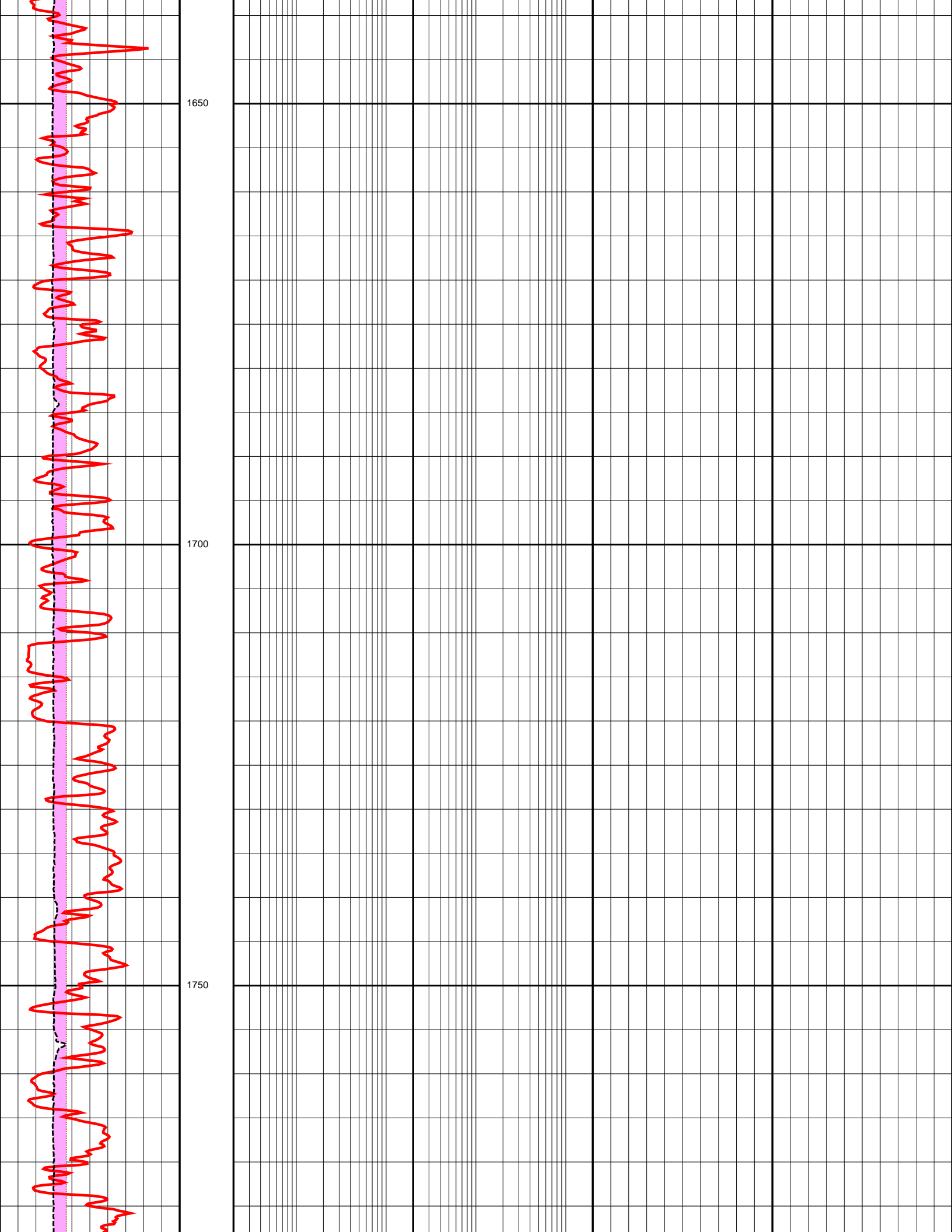


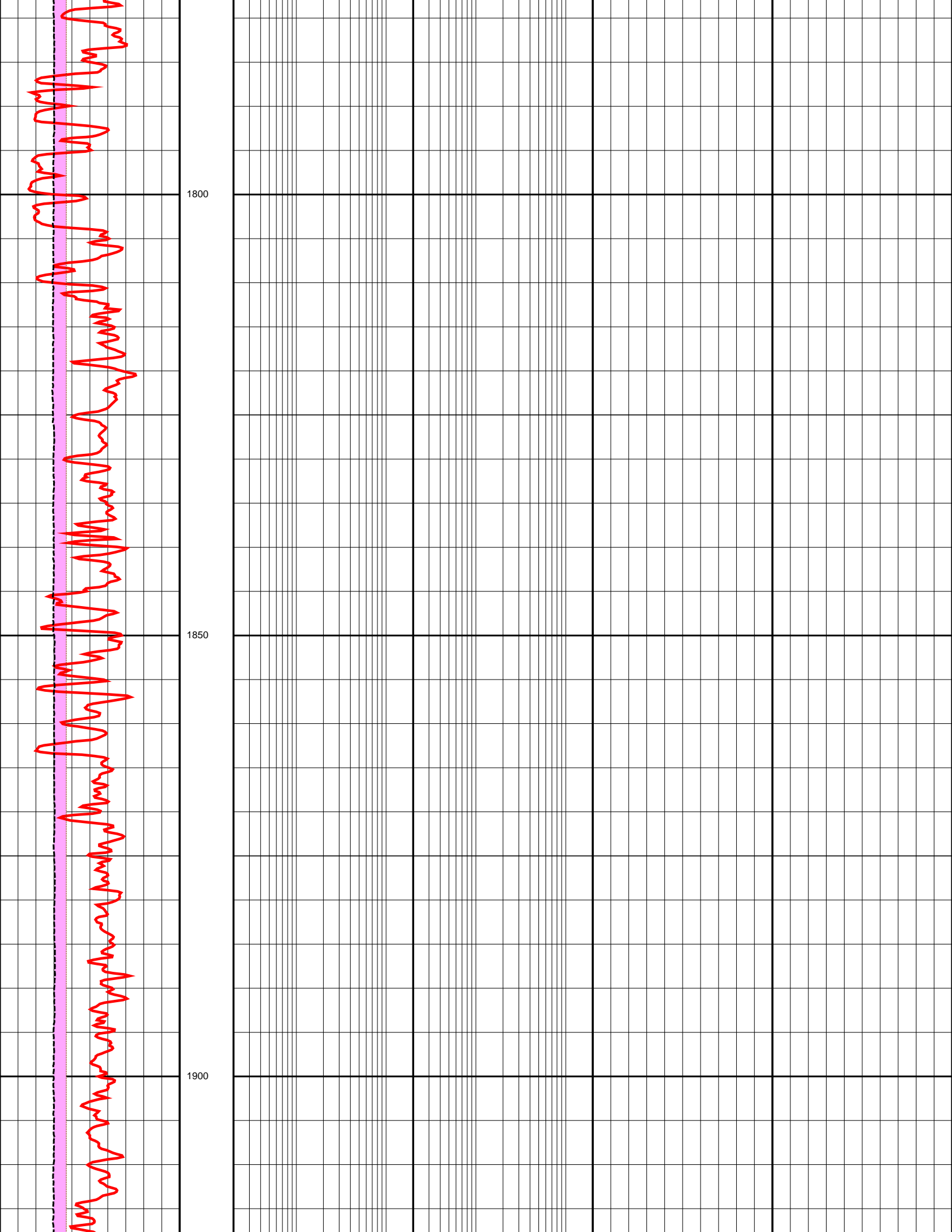


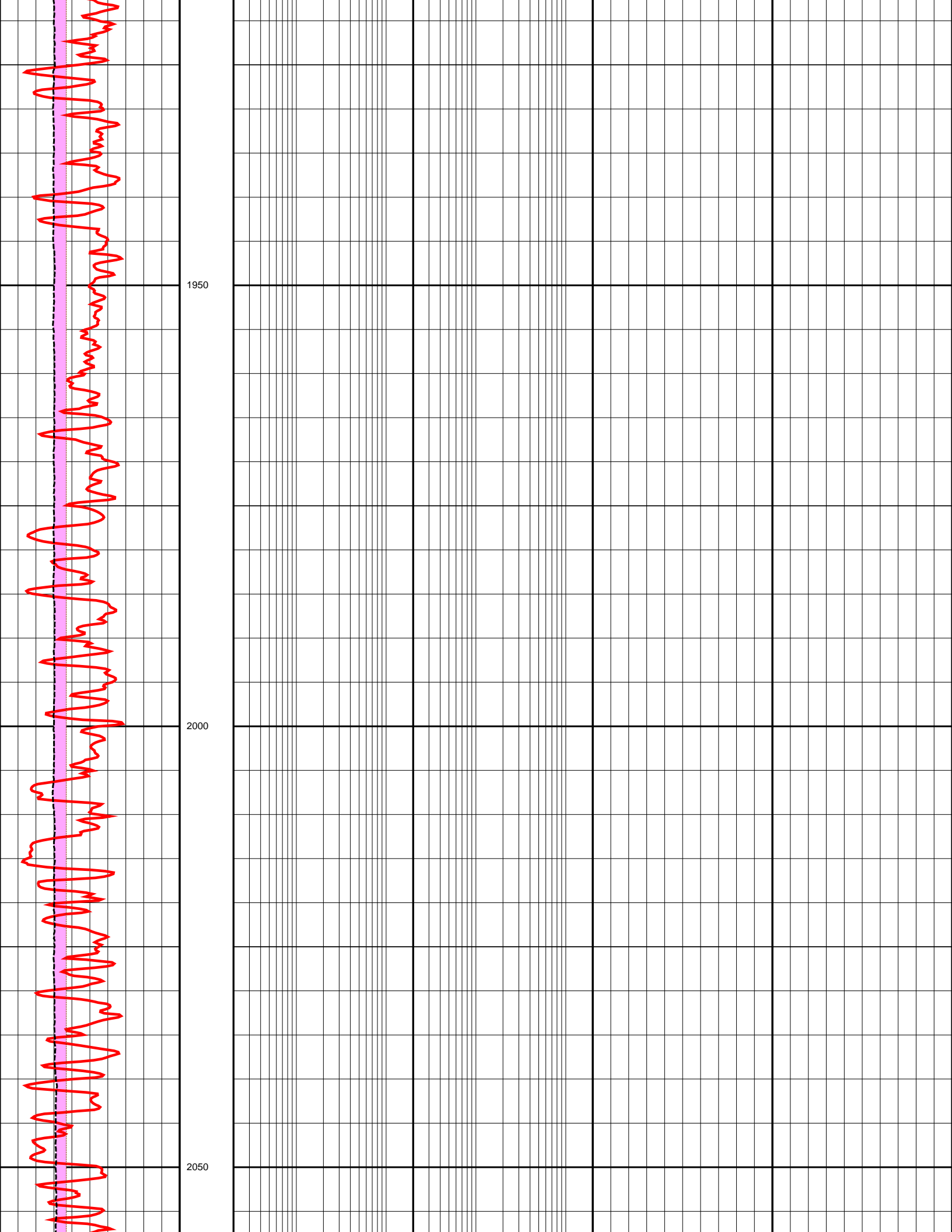


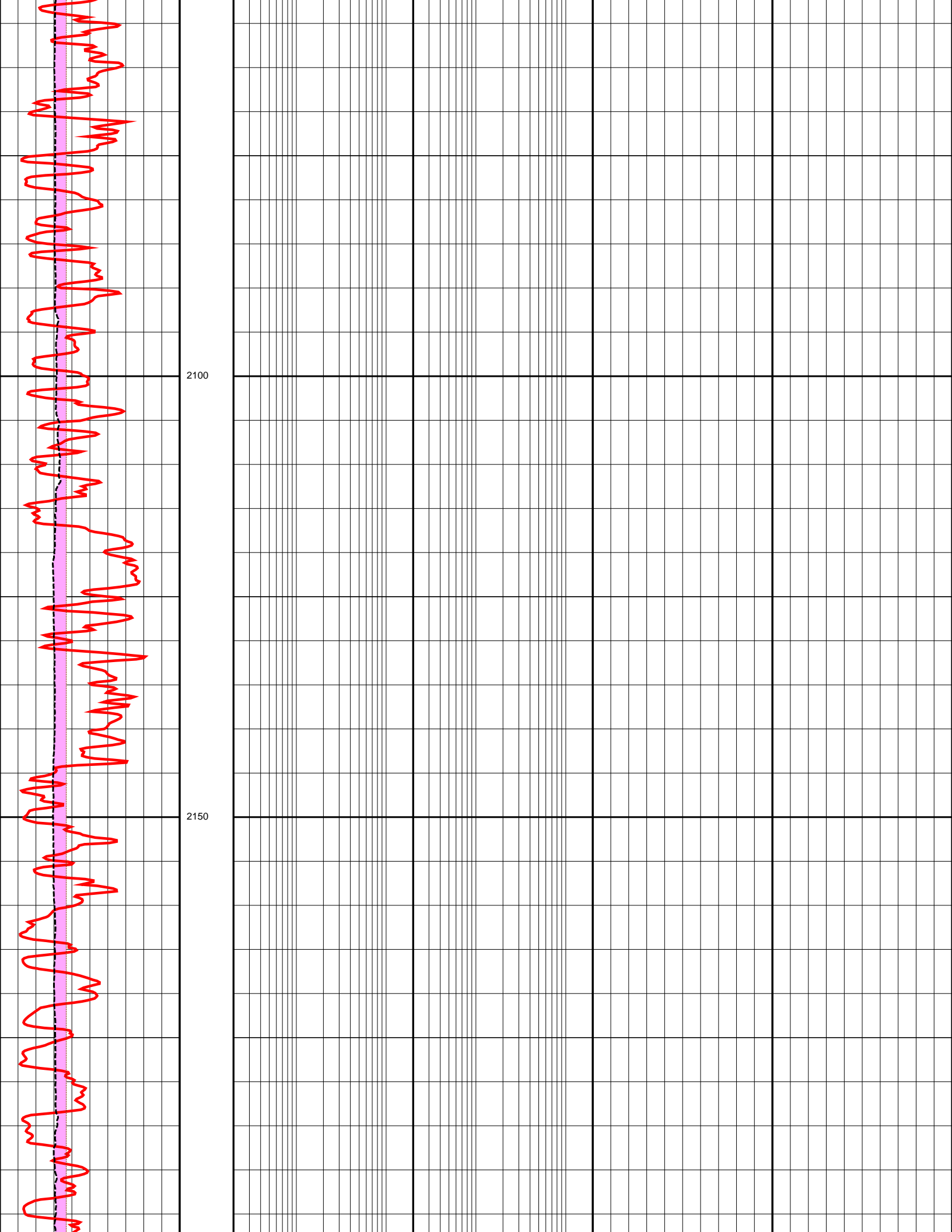


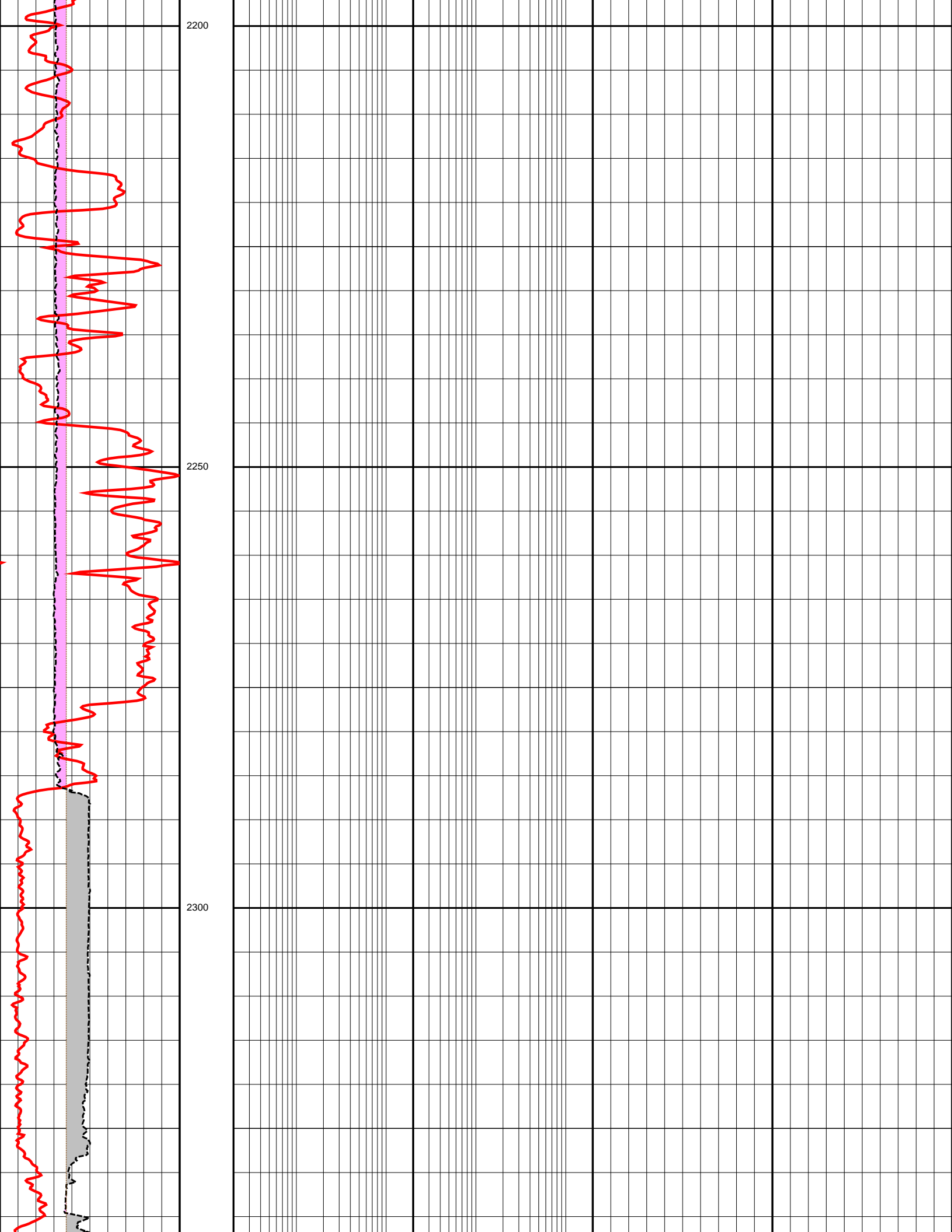


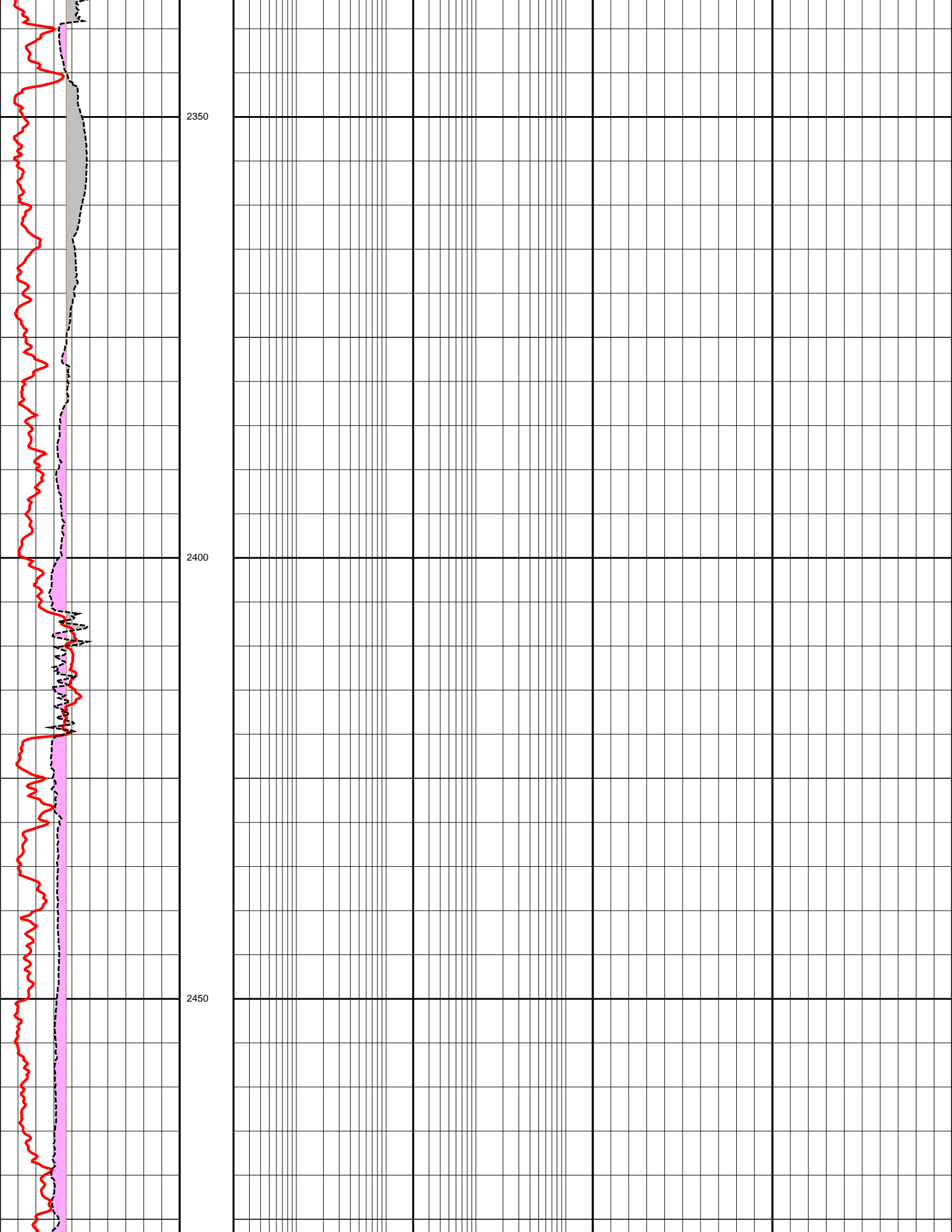


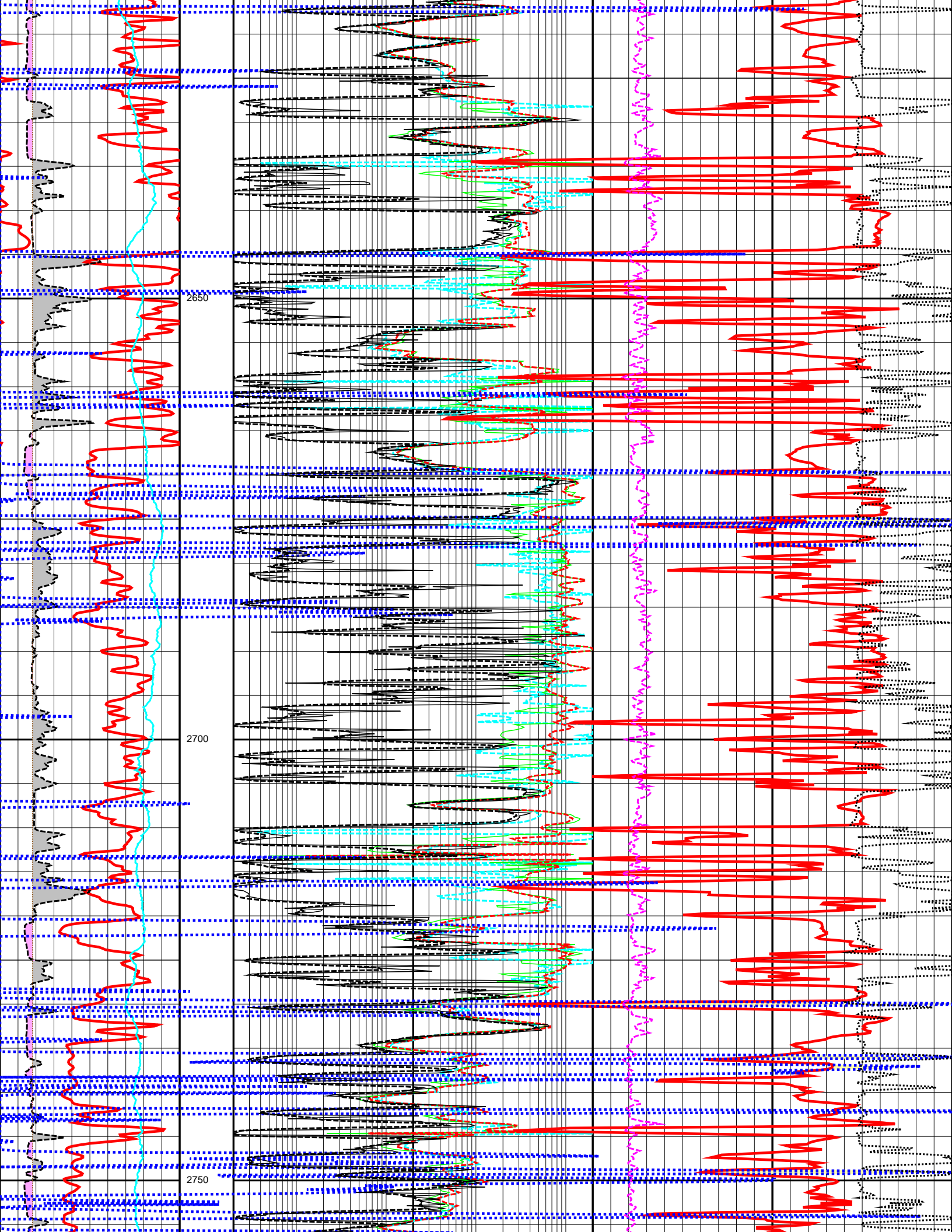


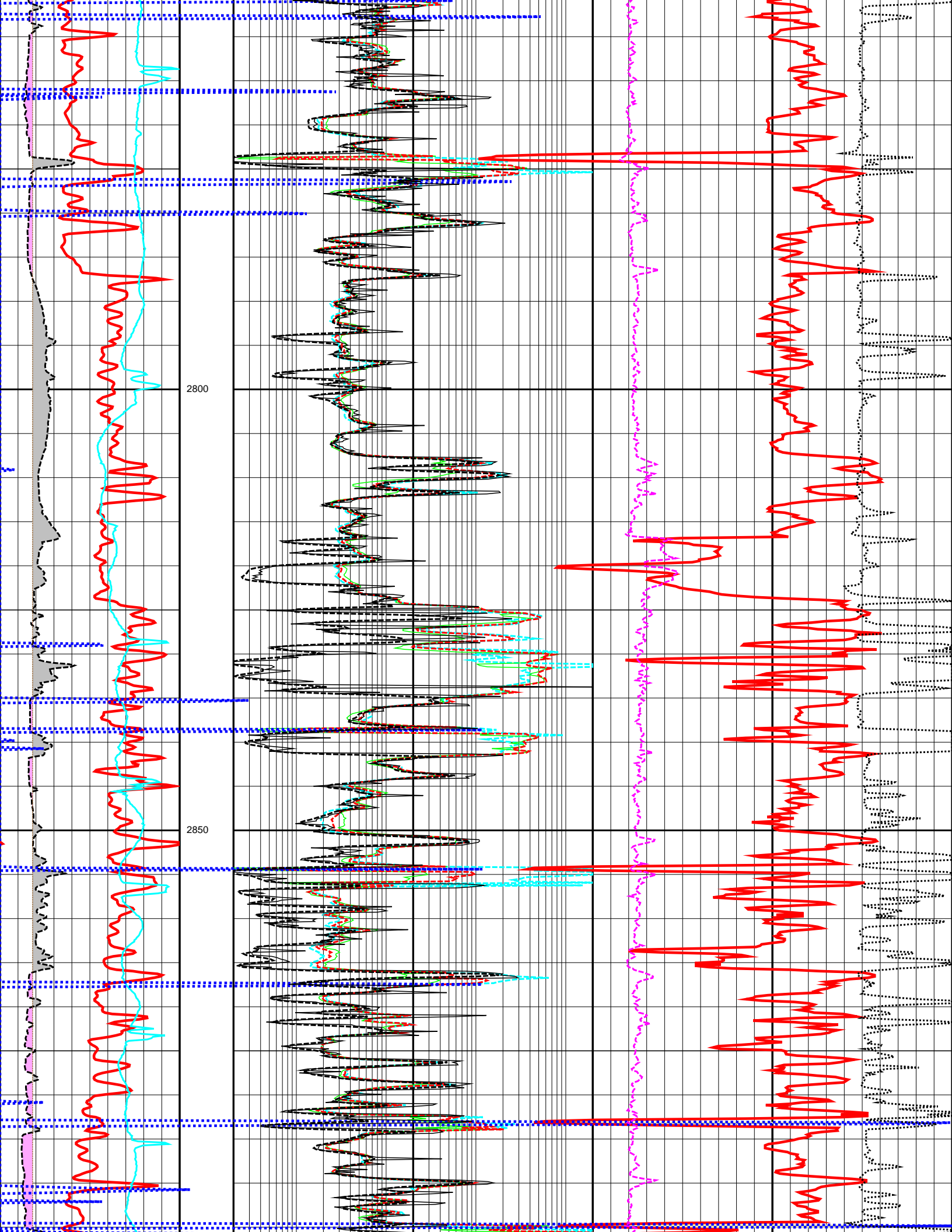


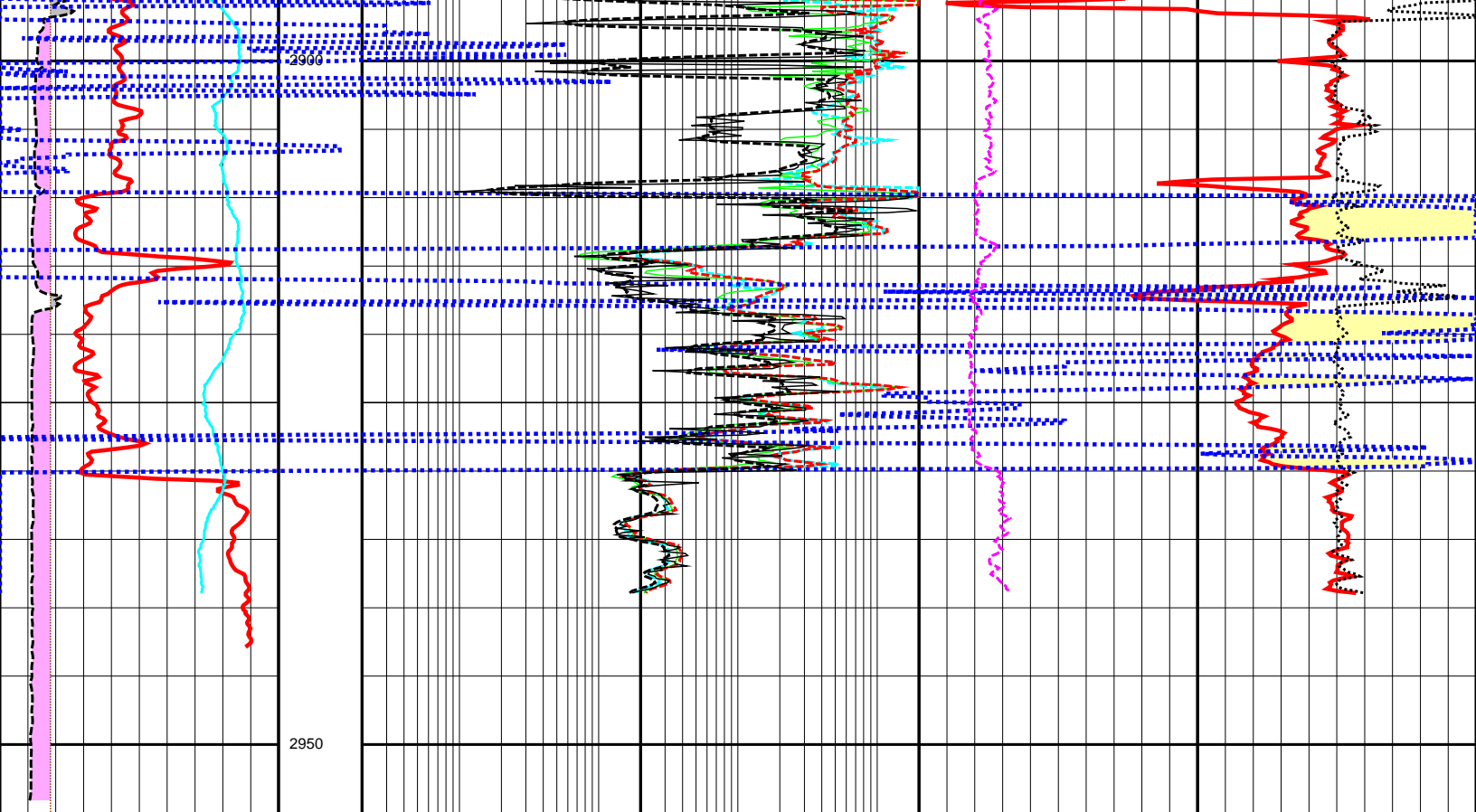












0.0	GR (API)	200.0	DEPTH	0.2	LLS (OHMM)	2000.0	1.95	RHOB (G/C3)	2.95
6.0	CALI (INCH)	26.0	M	0.2	RT (OHMM)	2000.0	0.45	NPHI (V/V)	-0.15
-80.0	SP (MV)	20.0	1:500	0.2	LLD (OHMM)	2000.0	0.0	PEF (B/E)	10.0 -0.25
6.0	BS (INCH)	26.0		0.2	MSFL (OHMM)	2000.0		DRHO (G/C3)	0.25
				0.2	RXO (OHMM)	2000.0			