

TEMPE VALE No. 1

Composite Logs

Company	PANCONTINENTAL PETROLEUM PTY LTD
Well Name	TEMPE VALE No.1
Field	WILDCAT
Country	AUSTRALIA
State	NORTHERN TERRITORY
Continent	AUSTRALIA
Latitude	024 00' 48.000" S DMS
Longitude	131 18' 29.000" E DMS
Perm. Datum	GL
Elevation Perm. Datum	214.64 M
Elevation KB (wrt EPD)	0.76 M
Elevation GL (wrt EPD)	0.00 M
Elev. Log Zero (wrt EPD)	0.76 M
Log measured from	KB
Drill measured from	KB
Spud Date	11/02/1983
Rig Release Date	12/04/1983
Date Plotted	Wednesday, 7 October 2009
Time Plotted	2:56:29 PM

Run Information

Run number	1	2			
Depth-Driller	634.00 M	1200.15 M			
Depth-Logger	634.00 M	1200.16 M			
Bottom log interval	634.00 M	1199.08 M			
Top log interval	2.00 M				
Casing Diameter	7.000 INCH				
Casing Depth	233.00 M				
Bit Size	5.750 INCH	5.750 INCH			
Hole Fluid type	Polymer Mud	Polymer Mud			

Fluid Density	1.086 G/CC	1.086 G/CC			
Bottom hole temp	48.50 DEGC	48.50 DEGC			
Logging unit No	V326/#33	V326/#33			
Recorded by	RC/WP	RC/WP			

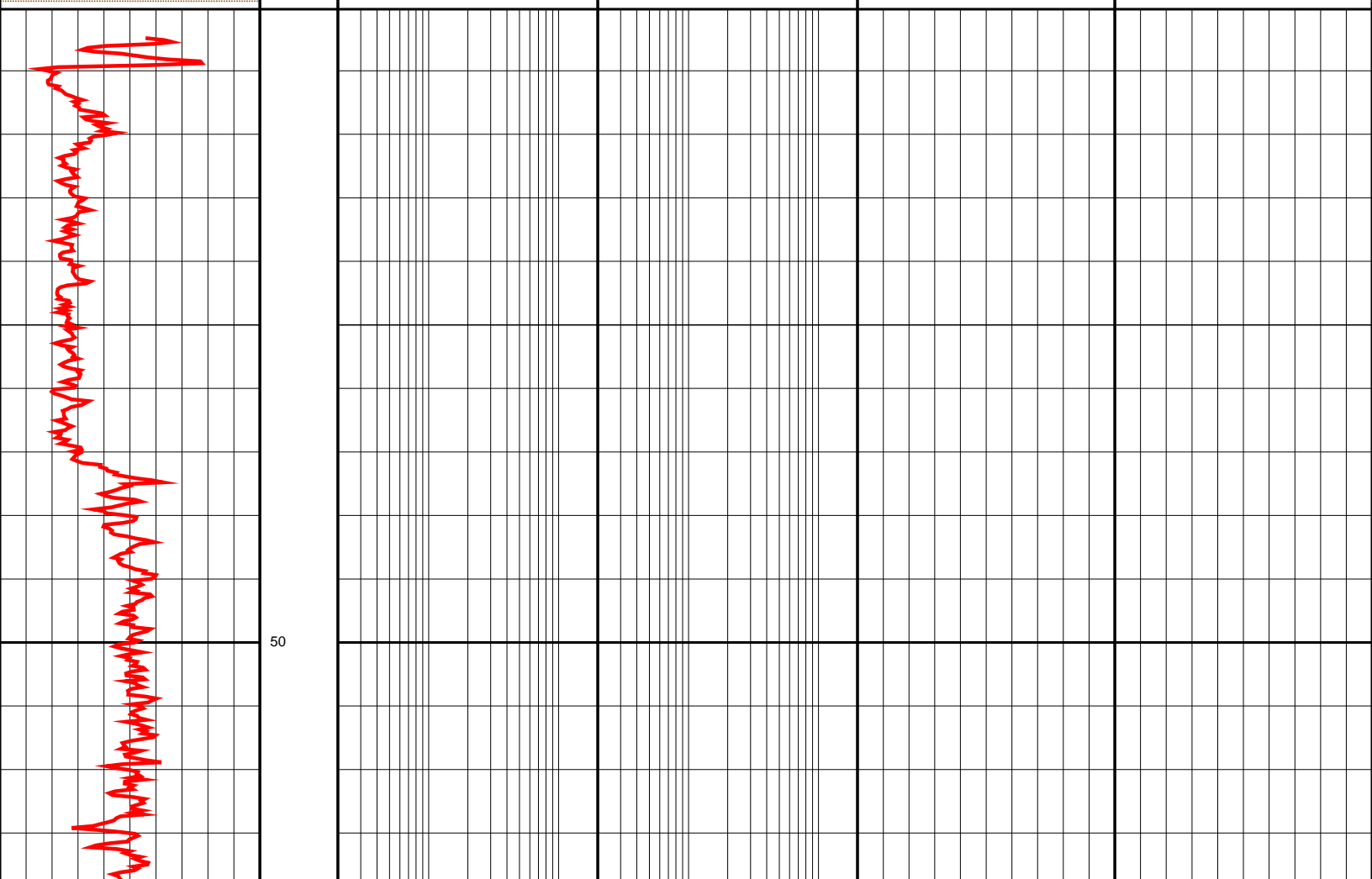
Logs loaded, edited and merged from 1 LIS format file by CDP in June 2009
 SP Log Baseline Shift and log smoothed
 Well header information completed from scanned PDF well header

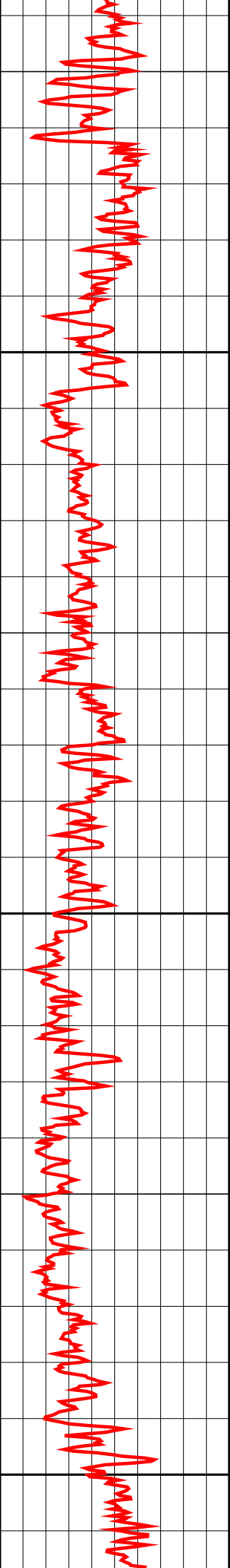
Since well log interpretations are opinions based upon inferences from well logs, we cannot and do not guarantee the correctness or accuracy of any interpretation. Therefore we shall not be liable or responsible for any loss, damage, cost or expense incurred or sustained by anyone resulting from any interpretation.

Log Description

GR	Gamma Ray
CALI	Caliper
SP	Spontaneous Potential Log
LLS	Shallow Laterolog
SN	Short Normal Resistivity
RHOB	Compensated Formation Density
DT	Delta T Compressional
BS	Bit Size

0.0	GR (API)	200.0	DEPTH	0.2	LLS (OHMM)	2000.0	1.95	RHOB (G/C3)	2.95
0.0	CALI (INCH)	16.0	M	0.2	SN (OHMM)	2000.0	140.0	DT (US/F)	40.0
-80.0	SP (MV)	20.0	1:500						
0.0	BS (INCH)	16.0							

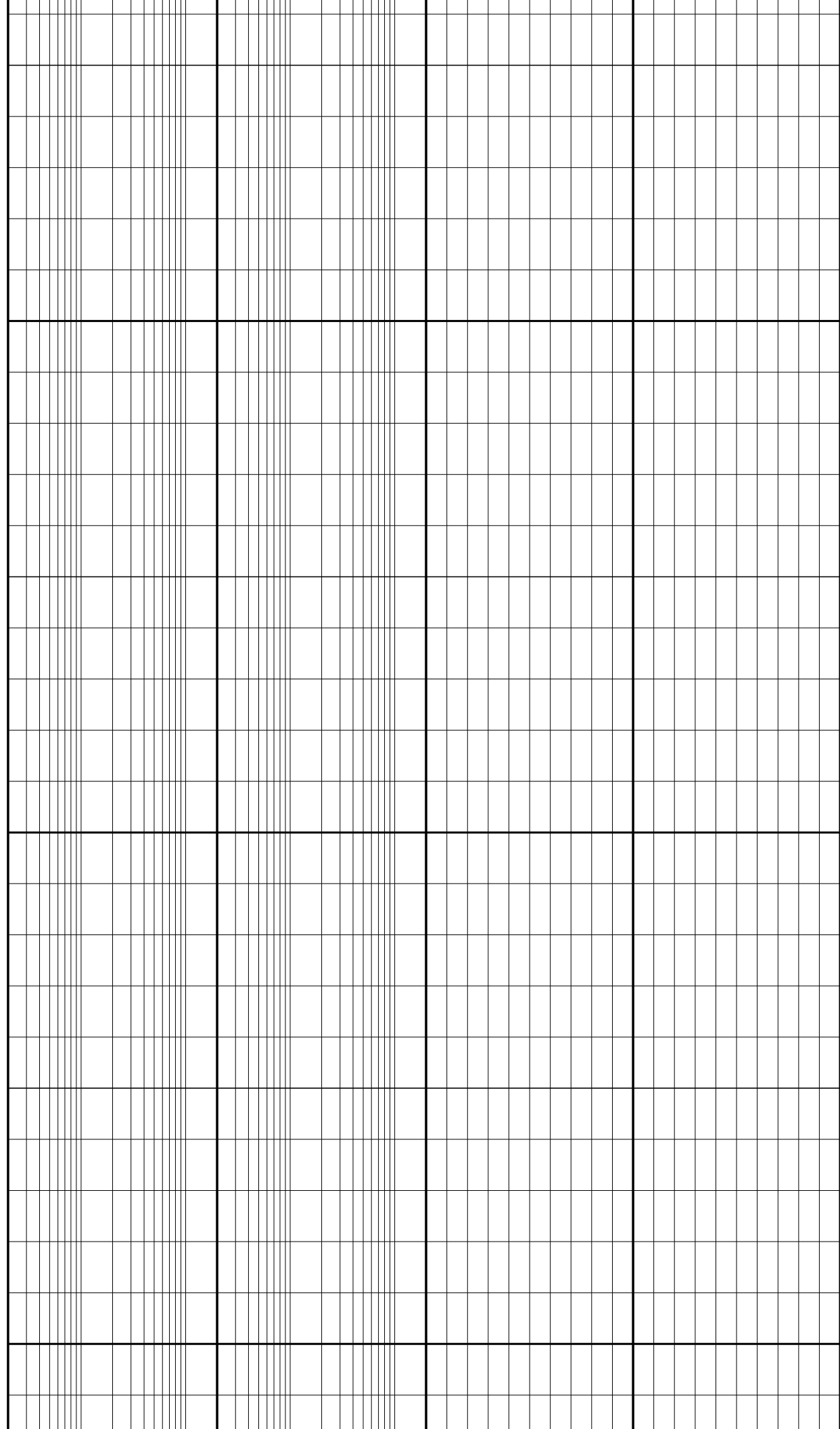


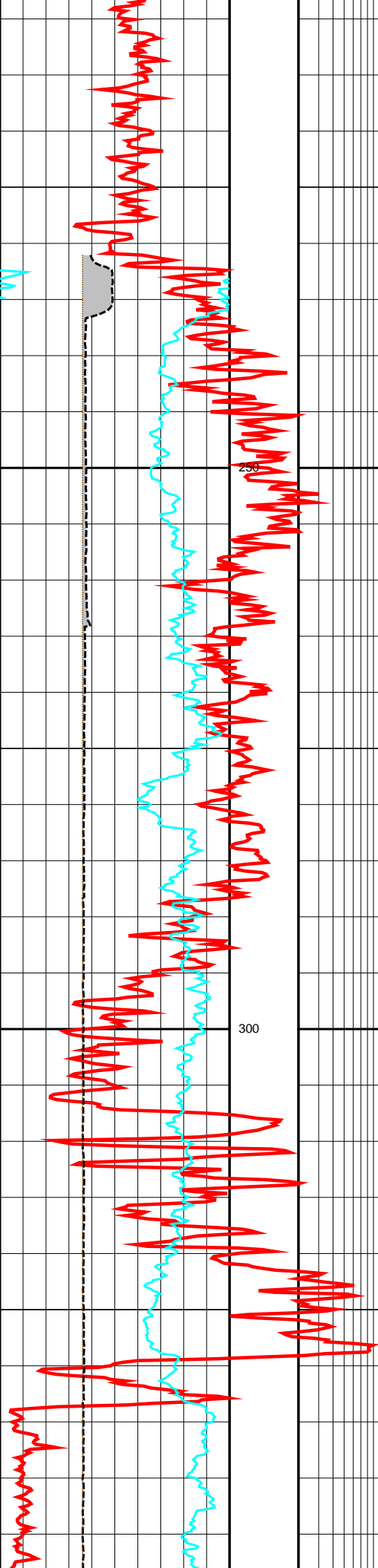


100

150

200





250

300

