

**CROCKER
DATA
PROCESSING**

WEABER # 4 WELL HYDROCARBON LOG

Company	AMITY OIL NL
Well Name	WEABER #4
Field	RL-1
Country	AUSTRALIA
State	NORTHERN TERRITORY
Province	BONABARTE BASIN
Field Location	SP 246 Line GNT 80-207
Latitude	015 21' 10.400" S DMS
Longitude	129 07' 48.900" E DMS
Permanent Datum	MSL
Elevation of KB	4.75 M
Elevation of DF	4.41 M
Elevation of RT	4.41 M
Elevation Ground lv	17.60 M
Log measured from	KB
Drill measured from	KB
Services	
Service company	
Number of runs	12-02-98
Date plotted	15:51:48
Time plotted	

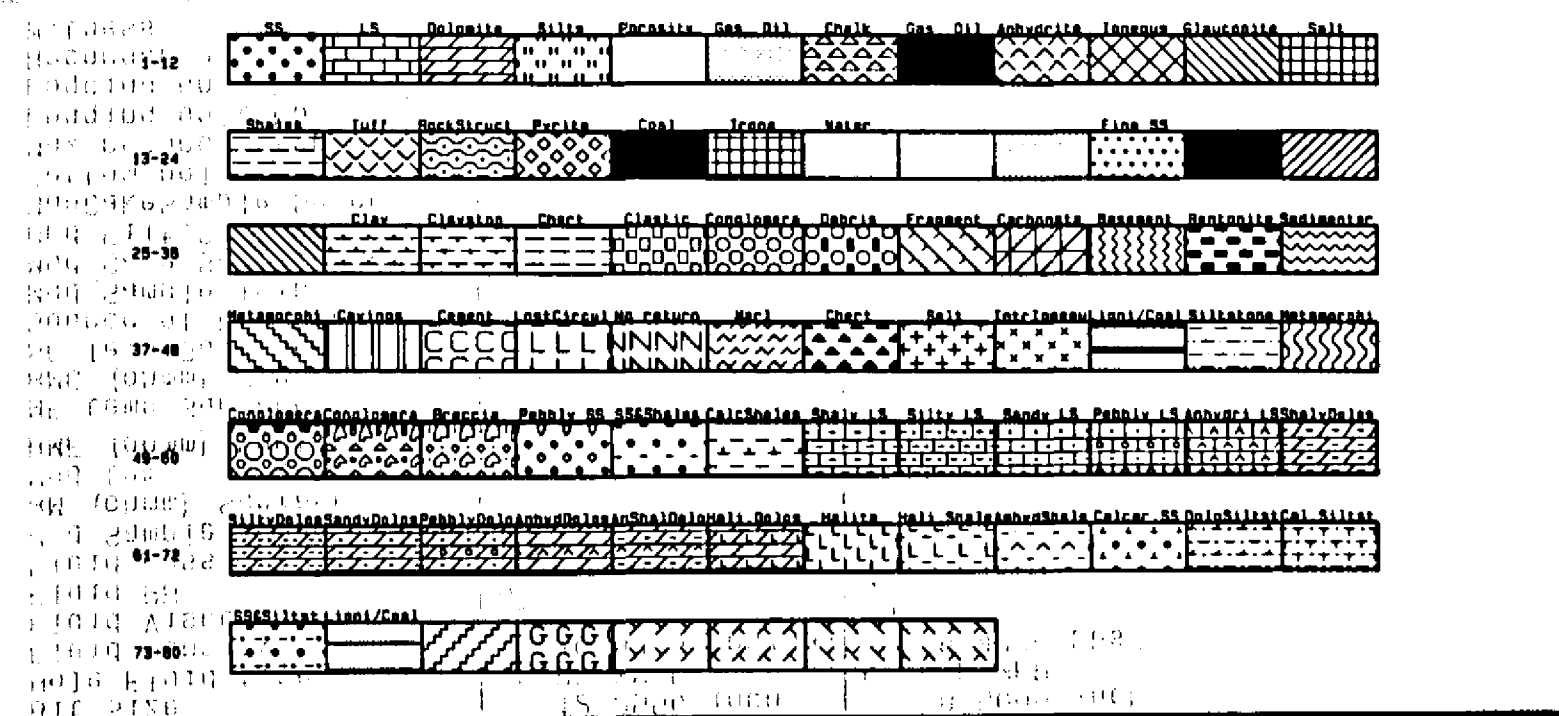
Software by Crocker Data Processing Revision 5.10

Run number	1	2	
Log date	20/08/97		
Depth-Driller	475.00 M		
Depth-Logger	475.00 M		
Bottom log interval	475.00 M	475.00 M	
Top log interval	49.00 M	475.00 M	
Casing-Driller	49.00 M	475.00 M	
Casing-Logger	49.00 M	475.00 M	
Casing Diameter	13 3750 inch	9 6255 inch	
Casing Depth	12 2550 inch	9 5000 inch	
Fluid Density	FW POLYMER 70.9325 Lbs/gal	FW POLYMER 78.4430 Lbs/gal	
Fluid Viscosity	55	48	
Fluid Loss	9	6	
Mud Sample Source	FLOW LINE	FLOW LINE	
RM (ohmm) Surface			
Mud Temp Surface			
RMC (ohmm) Surface			
MF Temp Surface			
RMC (ohmm) Surface			
MC Temp Surface			
Source of RMC/RMC			
Mud Sample Temp			
Mud Cake Sample Temp			
Mud Filt. Sample Temp			
MudCakeSample Sourc			
Bottom hole temp			
Max recorded temp			
Logging unit No			
Logging unit Loc			
Recorded by			
Witness			

REMARKS

Weaber #4
Spud

LITHOLOGIES



ROP	10	DEPTH	TG	C1	SI
ROP	60	1:500	U	1E-02	10 U3
ROP		200	U	1E-02	10
ROP				1E-02	10
ROP				1E-02	10
ROP				1E-02	10

ROP	10	DEPTH	TG	C1	SI
ROP	60	1:500	U	1E-02	10 U3
ROP		200	U	1E-02	10
ROP				1E-02	10
ROP				1E-02	10
ROP				1E-02	10

ROP	10	DEPTH	TG	C1	SI
ROP	60	1:500	U	1E-02	10 U3
ROP		200	U	1E-02	10
ROP				1E-02	10
ROP				1E-02	10
ROP				1E-02	10

ROP	10	DEPTH	TG	C1	SI
ROP	60	1:500	U	1E-02	10 U3
ROP		200	U	1E-02	10
ROP				1E-02	10
ROP				1E-02	10
ROP				1E-02	10

ROP	10	DEPTH	TG	C1	SI
ROP	60	1:500	U	1E-02	10 U3
ROP		200	U	1E-02	10
ROP				1E-02	10
ROP				1E-02	10
ROP				1E-02	10

ROP	10	DEPTH	TG	C1	SI
ROP	60	1:500	U	1E-02	10 U3
ROP		200	U	1E-02	10
ROP				1E-02	10
ROP				1E-02	10
ROP				1E-02	10

ROP	10	DEPTH	TG	C1	SI
ROP	60	1:500	U	1E-02	10 U3
ROP		200	U	1E-02	10
ROP				1E-02	10
ROP				1E-02	10
ROP				1E-02	10

ROP	10	DEPTH	TG	C1	SI
ROP	60	1:500	U	1E-02	10 U3
ROP		200	U	1E-02	10
ROP				1E-02	10
ROP				1E-02	10
ROP				1E-02	10

ROP	10	DEPTH	TG	C1	SI
ROP	60	1:500	U	1E-02	10 U3
ROP		200	U	1E-02	10
ROP				1E-02	10
ROP				1E-02	10
ROP				1E-02	10

ROP	10	DEPTH	TG	C1	SI
ROP	60	1:500	U	1E-02	10 U3
ROP		200	U	1E-02	10
ROP				1E-02	10
ROP				1E-02	10
ROP				1E-02	10

ROP	10	DEPTH	TG	C1	SI
ROP	60	1:500	U	1E-02	10 U3
ROP		200	U	1E-02	10
ROP				1E-02	10
ROP				1E-02	10
ROP				1E-02	10

ROP	10	DEPTH	TG	C1	SI
ROP	60	1:500	U	1E-02	10 U3
ROP		200	U	1E-02	10
ROP				1E-02	10
ROP				1E-02	10
ROP				1E-02	10

ROP	10	DEPTH	TG	C1	SI
ROP	60	1:500	U	1E-02	10 U3
ROP		200	U	1E-02	10
ROP				1E-02	10
ROP				1E-02	10
ROP				1E-02	10

ROP	10	DEPTH	TG	C1	SI
ROP	60	1:500	U	1E-02	10 U3
ROP		200	U	1E-02	10
ROP				1E-02	10
ROP				1E-02	10
ROP				1E-02	10

ROP	10	DEPTH	TG	C1	SI
ROP	60	1:500	U	1E-02	10 U3
ROP		200	U	1E-02	10
ROP				1E-02	10
ROP				1E-02	10
ROP				1E-02	10

ROP	10	DEPTH	TG	C1	SI
ROP	60	1:500	U	1E-02	10 U3
ROP		200	U	1E-02	10
ROP				1E-02	10
ROP				1E-02	10
ROP				1E-02	10

ROP	10	DEPTH	TG	C1	SI
ROP	60	1:500	U	1E-02	10 U3
ROP		200	U	1E-02	10
ROP				1E-02	10
ROP				1E-02	10
ROP				1E-02	10

ROP	10	DEPTH	TG	C1	SI
ROP	60	1:500	U	1E-02	10 U3
ROP		200	U	1E-02	10
ROP				1E-02	10
ROP				1E-02	10
ROP				1E-02	10

ROP	10	DEPTH	TG	C1	SI
ROP	60	1:500	U	1E-02	10 U3
ROP		200	U	1E-02	10
ROP				1E-02	10
ROP				1E-02	10
ROP				1E-02	10

ROP	10	DEPTH	TG	C1	SI
ROP	60	1:500	U	1E-02	10 U3
ROP		200	U	1E-02	10
ROP				1E-02	10
ROP				1E-02	10
ROP				1E-02	10

ROP	10	DEPTH	TG	C1	SI
ROP	60	1:500	U	1E-02	10 U3
ROP		200	U	1E-02	10
ROP				1E-02	10
ROP				1E-02	10
ROP				1E-02	10

ROP	10	DEPTH	TG	C1	SI
ROP	60	1:500	U	1E-02	10 U3
ROP		200	U	1E-02	10
ROP				1E-02	10
ROP				1E-02	10
ROP				1E-02	10

ROP	10	DEPTH	TG	C1	SI
ROP	60	1:500	U	1E-02	10 U3
ROP		200	U	1E-02	10
ROP				1E-02	10
ROP				1E-02	10
ROP				1E-02	10

ROP	10	DEPTH	TG	C1	SI
ROP	60	1:500	U	1E-02	10 U3
ROP		200	U	1E-02	10
ROP				1E-02	10
ROP				1E-02	10
ROP				1E-02	10

ROP	10	DEPTH	TG	C1	SI
ROP	60	1:500	U	1E-02	10 U3
ROP		200	U	1E-02	10
ROP				1E-02	10
ROP				1E-02	10
ROP				1E-02	10

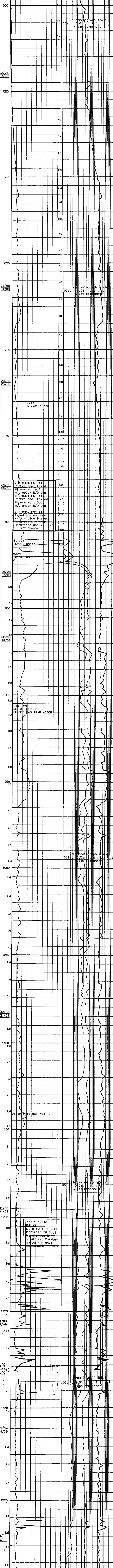
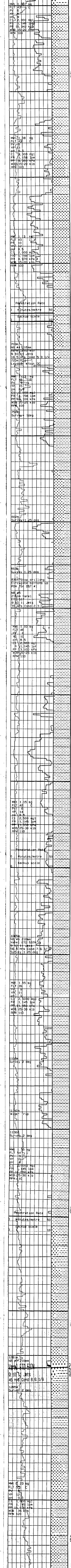
ROP	10	DEPTH	TG	C1	SI
ROP	60	1:500	U	1E-02	10 U3
ROP		200	U	1E-02	10
ROP				1E-02	10
ROP				1E-02	10
ROP				1E-02	10

ROP	10	DEPTH	TG	C1	SI
ROP	60	1:500	U	1E-02	10 U3
ROP		200	U	1E-02	10
ROP				1E-02	10
ROP				1E-02	10
ROP				1E-02	10

ROP	10	DEPTH	TG	C1	SI
ROP	60	1:500	U	1E-02	10 U3
ROP		200	U	1E-02	10
ROP				1E-02	10
ROP				1E-02	10
ROP				1E-02	10

ROP	10	DEPTH	TG	C1	SI
ROP	60	1:500	U	1E-02	10 U3
ROP		200	U	1E-02	10
ROP				1E-02	10
ROP				1E-02	10
ROP				1E-02	10

ROP	10	DEPTH	TG	C1	SI
ROP					



CLAYSTONE:
vlt-lt gy non-calc sft stky disp

475-540m
SILTSTONE w/minor interbeds & stringers of SANDSTONE

SILTSTONE:
med lt-med dk gry bcm med-dk gry w/ depth ip mod-abb sdy w/grad to silty Sst occ arg sl-mod mic (ip micmic) tr-si carb matter nil-r vf dissep pyr sbbiky-biky occ sbfis mod frm

SANDSTONE:
vlt-med lt gry silty sized-f gr qtz pred vf gr SA/SR mod srt ip & incrg w/depth tr-si silty mod silic cmt pred as qtz o/growths nil-tr mica & carb matter fr-hd nil-vdip no oil show

540-587m
SILTSTONE:
med dk gry to dk gry ip mod to abd sdy ip grad to silty Sst ip arg non-calc pred micmic r carb spks sbbiky ip sf sbfis mod frm

SANDSTONE:
vlt to mid-gry ip dk gry occ tr mid lt grn-gry vf-f gr pred vf gr SA/SR mod to wl srt ip sl silty mtz mod sil -ic cmt occ mod calc sl mic fr-hd nil-p/interbed por no oil show

SHALE:
med dk gry sl silty ip micmic tr vg carb spks sbbiky frm

587-611m
Interbedded SANDSTONE & SILTSTONE w/tr SHALE

SANDSTONE:
vlt to lt gry occ mid lt gry tr mid lt grn-gry vf-f gr pred vf gr SA/SR mod to wl srt ip sl silty mtz mod sil -ic cmt occ mod calc sl mic fr-hd nil-p/interbed por no oil show

SILTSTONE:
A/A between 540-587m w/tr mic sb-biky to biky sl-mod frm

SHALE:
A/A between 560-569m

611-656m
SANDSTONE w/tr SILTSTONE

SANDSTONE:
either vlt-lt gry or subordinate lse trnsp-trnsl r pnk arg & rd f -med w/occ crs qtz grs ore med gr SA/SR occ rdg mod-wl srt mod silic cmt tr calc cmt mod fr/w/fip no oil show

SILTSTONE:
A/A between 540-587m

656-698m
SILTSTONE w/minor CLAYSTONE & interbeds & stringers of SANDSTONE

SILTSTONE:
med lt-med dk gry ip brn-gry ip sl-mod sdy occ bcm abd sdy grad to silty Sst arg mod-wl srt mod silic sl dol micmic sbbiky-biky mod frm

SANDSTONE:
med lt-med brn-gry tr med grn-gry & med lt gry vf-f med gr qtz pred f-m gr SA/SR occ R mod srt ip sl silty mod-v silic, sl bcm v dol w/depth ip tr-mod pyr hd nil inf por no shows

CLAYSTONE:
med lt-dk gry, med lt-med dk brn gry ip sl-mod silty occ sl dol micmic sbbiky-sbfis occ splty, mod frm

698-770m
CLAYSTONE w/minor SANDSTONE & tr SILTSTONE

CLAYSTONE/SHALE:
med-med dk brnsh gry minor med-med dk gry-dk gry ip tr-si silty non-calc/dol micmic r carb spks sbbiky-fis frm

SANDSTONE:
lt-med dk brnsh gry occ lt gry f-med w/tr crs gr qtz sbang (SA)/sbrdd (SR) mod sort, occ tr-si silty, mod silty tr-mod dollic r itm frgs mod (fr) hd nil inf por, no shows

SILTSTONE:
A/A between 664-698m

770-824m
Interbedded CLAYSTONE/SHALE & SANDSTONE with traces SANDY SILTSTONE.

CLAYSTONE/SHALE: med-med dk brn gry, minor med-med dk gry, 1/p tr-si silty non-calc/dollic, micromic, r carb specks, nil-r pyr, sbbiky-fis, 1/p splin, firm.

SANDSTONE: vlt-lt gry, 1/p minor lt-med brn gry, f-med gr qtz w/occ crs grs, SA/SR some R, mod sort, 1/p sl wh kaol mtz, mod-v silic, nil-sl dollic, nil-sl pyr, r mic, mod fr-hd, nil-occ p inf por. No shows.

SANDY SILTSTONE: med brn gry, med grn gry, med gry, abd sdy grad to silty Sst, sl mic, biky, sl-mod frm.

824-854m
CLAYSTONE with minor SILTSTONE and rare SANDSTONE.

CLAYSTONE: dk brn gry-brn blk, occ dk gry & dusky brn, 1/p tr-si mod silty occ bcm abd silty grad to arg silty, micromic, r carb matter, r pyr, sbbiky-biky, some sb fis, firm.

SILTSTONE: med dk-dk brn gry, mod- med arg, occ sdy, micromic, biky, firm.

SANDSTONE: med dk brn gry & gry, silty non-calc/dollic, micromic, SA/SR, mod well sort, 1/p sl-mod silty, mod-v silic, 1/p tr dol, tr mic, sl fr-hd, nil por, N/S.

854-1000m
CLAYSTONE with traces of SILTSTONE and laminations and stringers of SANDSTONE.

CLAYSTONE: (75-100%) dk brn gry-pred brnsh blk, occ dk gry, 1/p sl -v silty occ abd silty grad to arg sil -silt, 1/p sl-mod calc &/or dollic, micmic, carb fiks, r-tr pyr, sbbiky -biky, 1/p sbfis, frm

SILTSTONE: (tr-15%) med dk-dk brn gry, 1/p arg, occ sl sdy, tr-si calc &/or dollic, micmic, sbbiky mod frm

SANDSTONE: (nil-10%) vlt-med lt gry, lt-med brn gry, vf-f gr qtz, dom vf gr, SA/SR, mod wl srt, 1/p sl silty, tr-mod dollic, mod-v silic, nil-sl pyr, r mic, sl fr-hd, nil inf por, N/S.

1000-1160m
CLAYSTONE with traces of SILTSTONE and rare SANDSTONE decreasing with depth.

CLAYSTONE: med dk-dk brnsh gry & brnsh blk, 1/p med-dk gry, 1/p sl-v silty occ abd silty grad to arg silst, 1/p tr-si dollic, micromic, r-tr pyr, tr-si ants dusky brn nod mat, sbbiky-biky, occ sbfis, firm.

SILTSTONE: med dk-dk brn gry, 1/p arg, occ sl sdy, tr-si calc &/or dollic, micmic, sbbiky mod frm

SANDSTONE: med dk-dk brn gry, 1/p arg, 1/p sdy, non-calc/dollic, sl mic, r carb spks, sbbiky, mod frm

1160-1205m
CLAYSTONE with minor SILTSTONE.

CLAYSTONE (40-60%): dk brn-gry blk bcm dk gry-gry blk, sl-v silty, nil-occ tr dollic/calc, micmic, nil-sl pyr & carb, tr dusky brn nod mat, sbbiky-biky, occ sbfis mod frm

SILTSTONE (60-10%): med dk brn gry, bcm med dk gry, sl-w arg, 1/p sdy, non-calc/dollic, sl mic, r carb spks, sbbiky, mod frm

1205-1271m
CLAYSTONE with subord SANDSTONE intbeds & minor SILTSTONE.

CLAYSTONE: med-dk gry, min gry blk, occ brn gry, tr-mod silty, nil-tr dollic, micromic, 1/p sl carb (gryblk fraction) r-tr pyr, sbbiky-biky, firm.

SANDSTONE: lt-med lt gry, lt-med lt brn gry, vf-f gr qtz, dom vf gr bcm below 1244m, f-med w-tr crs qtz grs, SA/SR occ R, mod sort, mod-v silic cmt, tr-si dollic, nil-r carb matter, pyr & mic, hd-occ sl fr, nil inf por.

SHOW 1244-1250 SST w/- dull brn & tr dull wk vel floor. Nil cut.

1256-1271 SST 1/p with dull brn floor, nil cut.

SILTSTONE: a/a @ 1160-1205m.

1271-1291m
SANDSTONE & CLAYSTONE with trace SILTSTONE.

SANDSTONE: as agg & lse. lt gry & brn gry, clt, r milky, f-w crs qtz grs, dom med-crs gr, SA/SR, mod sort mod-v silic, nil-tr dollic, r pyr, nil-1/p inf por, N/S.

CLAYSTONE: s/a btw 1205-1272m.

SILTSTONE: med dk gry, 1/p arg, 1/p sdy, micromic, sbbiky, mod frm.

1291-1397m
Interbedded CLAYSTONE & SANDSTONE w/traces of SILTSTONE.

CLAYSTONE (nil-100%): dk gry-gry blk occ dk brn gry, 1/p sl silty occ grad to arg silst, nil-tr dollic micmic, r pyr & carb matter, sbbiky-biky, frm

SANDSTONE (nil-90%): lt-med lt gry occ med lt brn gry, vf gr qtz, dom f gr, except btw 1334-1355m where f-crs & some crs gr qtz, dom med-crs, SA/SR occ rdg, mod srt, 1/p tr-si silty, 1/p sl-mod calc, nil-sl dollic, r-tr pyr, r carb matter, mod hd to hd, nil-tr inf por, latter in crs fraction, nil floor or cut

SILTSTONE (nil-10%): med dk gry, 1/p arg, 1/p sdy, micmic, sbbiky mod frm

Mwt 0.23 sg
 FLT 55 C
 PV 8
 YP 12
 PH 9.6
 CI 1.000 mg/l
 FR 1.145 lpm
 PP 11.030 kPa
 WOB 35 klb
 RPM 120

1396m
 NE #8 216mm
 Varel V617
 11:11:11 Jets
 6.5 Hrs Cond 2:2:1

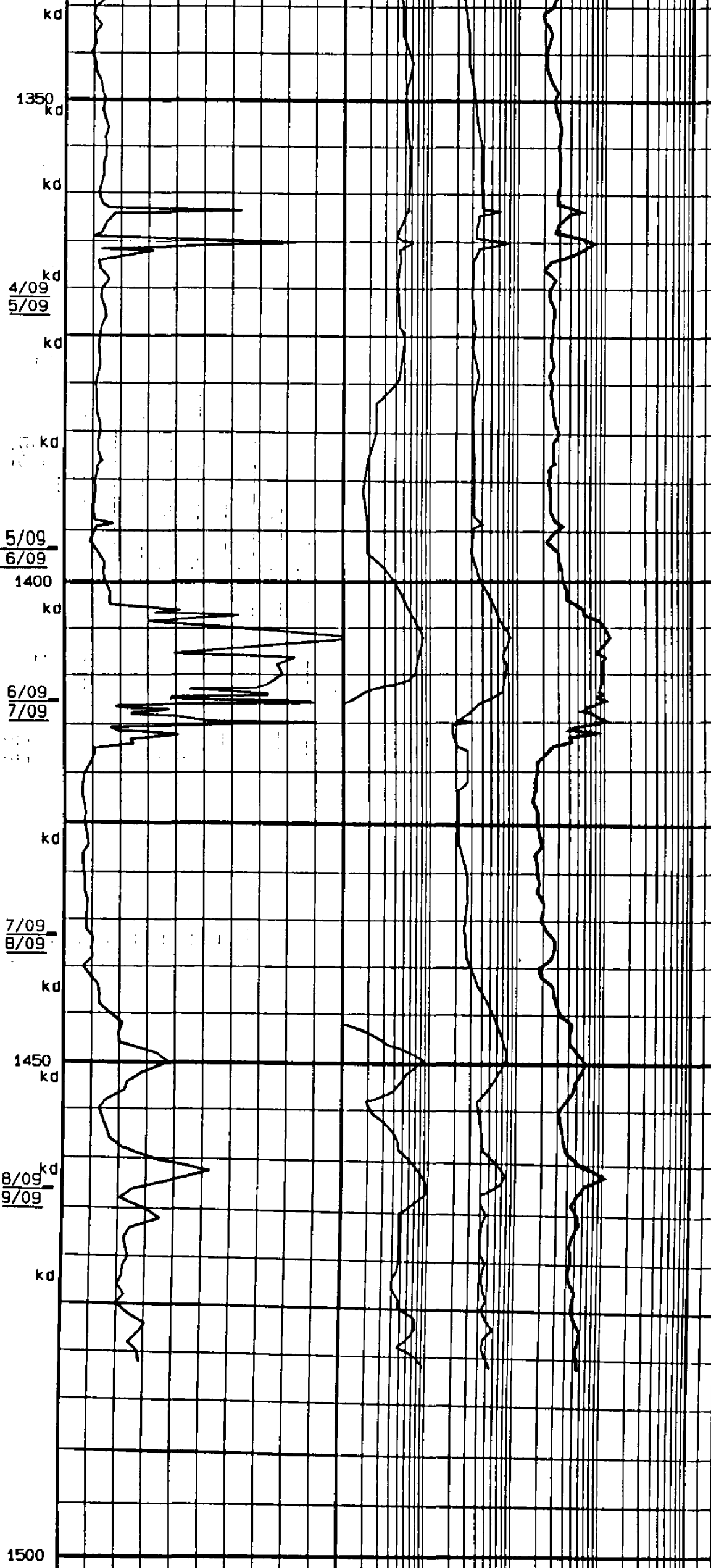
1442m
 NE #8 216mm
 Varel V617
 11:11:11 Jets
 Mwt 1.35 sg
 FLT 56
 PV 11
 YP 15
 PH 8.6
 CI 1.000 mg/l
 FR 1.025 lpm
 PP 11.720 kPa
 WOB 35 klb
 RPM 120

1436m
 NE #10 216mm
 Varel V617
 11:11:11 Jets
 1441m
 POH Loose Pump Fr
 Bit 710RE
 20.6 Hrs

Mwt 0.37 sg
 FLT 55
 PV 12
 YP 8
 PH 8.6
 CI 1.000 mg/l
 FR 1.145 lpm
 PP 7.050 kPa
 WOB 20 klb
 RPM 120

1481m
 TD 0900 Hrs 9/09/97
 Survey 1.75 deg

Circ Bottoms up POH
 Run BPB Logs
 DLE-MSFL-SP-CAL-GR-BHC
 CNL-LDT-GR-CAL



7-ary med. mod-v silic. nil-sil dolic.
 r-tr pyr. r carb matter, mod hd to
 hd, nil-tr inf por, latter in crs
 fraction, nil fluor or cut

SILTSTONE (nil-10%): med dk gry, i/p
 arg. i/p sdy, micmic, sbblky mod frm

1397-1400m CLAYSTONE with minor
 SILTSTONE

CLAYSTONE (90%): dk gry gry blk
 slty, non-calc tr carb spks tr
 pyr, frm

SILTSTONE: (10%) med dk gry, mic,
 sbblky, mod frm

1400-1412m
 SANDSTONE (30-75%) off wh to v lt
 gry, f gr-occ lse med gr, wl srt
 SA qtz gr, qtzose over growths
 f-poor vis por no oil show

1412-1418m
 SANDSTONE (50%): off wh, f gr to
 occ loose med grns, well srted,
 SA, quartzose overgrowths, fair
 to poor vis por.

CLAYSTONE (50%): dk gry, slty,
 non calcareous.

1418-1436m
 CLAYSTONE (85-100%): dk gry, slty,
 non calcareous.

SANDSTONE (15-0%): decreasing with
 depth, as above, no oil show

1436-1481m
 CLAYSTONE (75-100%): dk gry to blk,
 slty, non-calc, i/p sl dolic, blk
 i/p sbfis, frm

SANDSTONE (0-25%): off wh, vf gr,
 mod wl srt SA qtz, i/p sl to mod
 calc occ sl dolic, silic cmt frm
 poor vis por no oil show