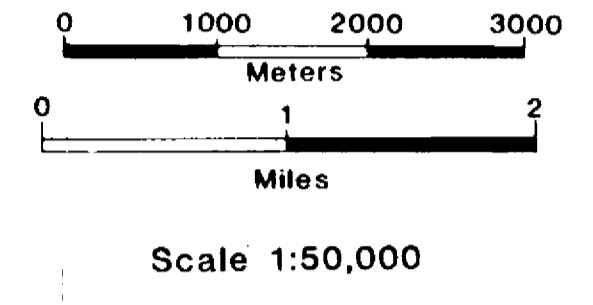


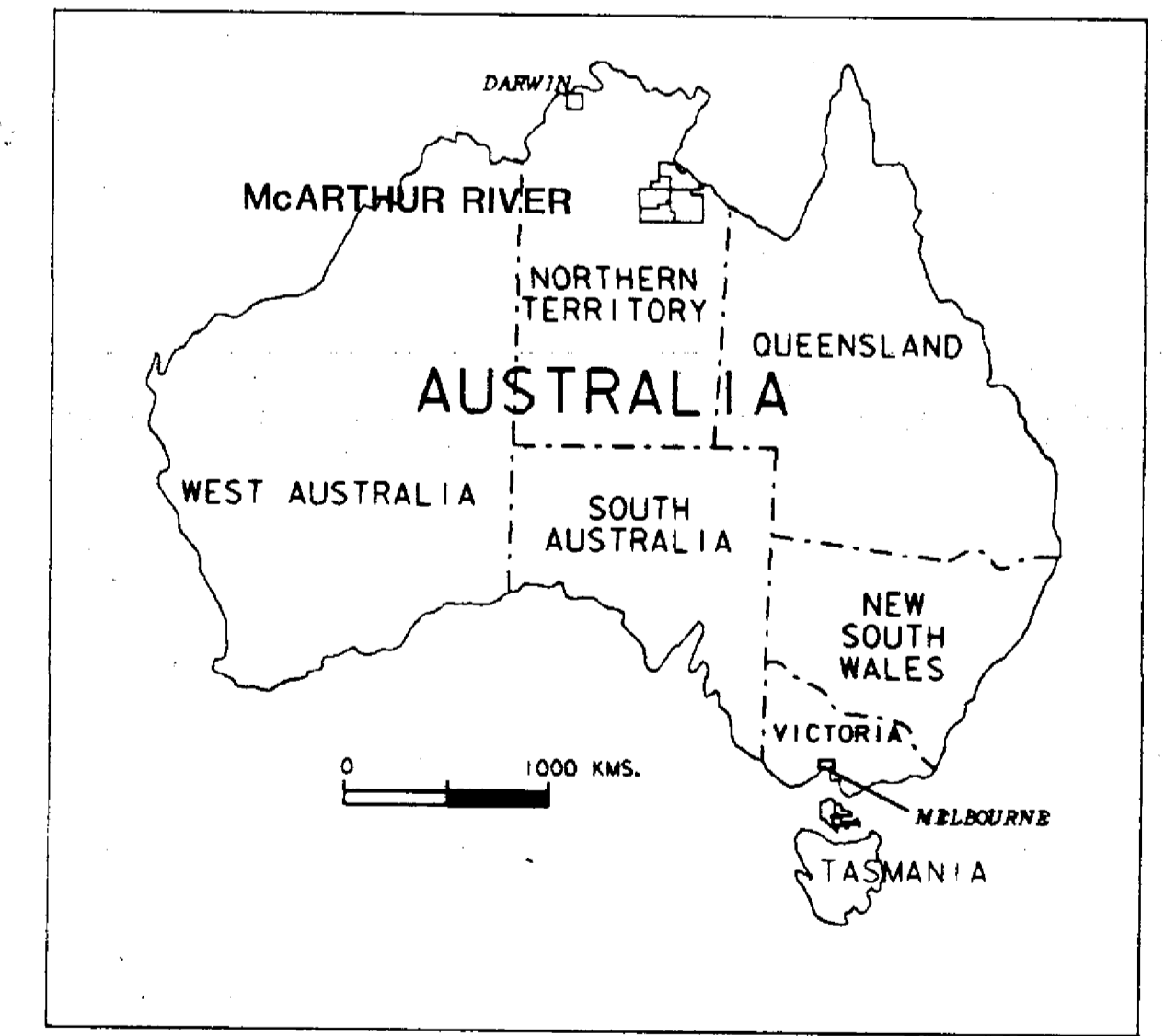
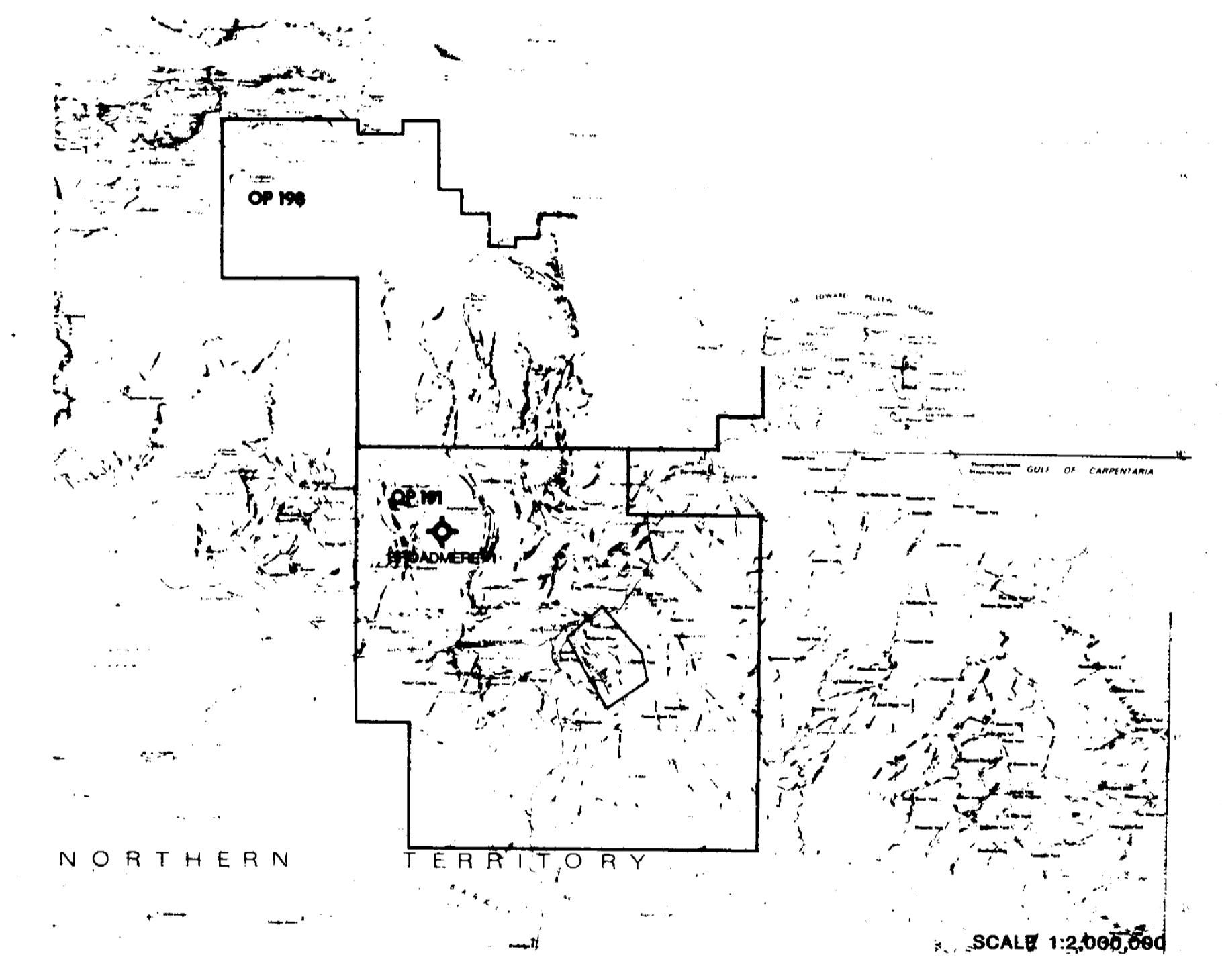
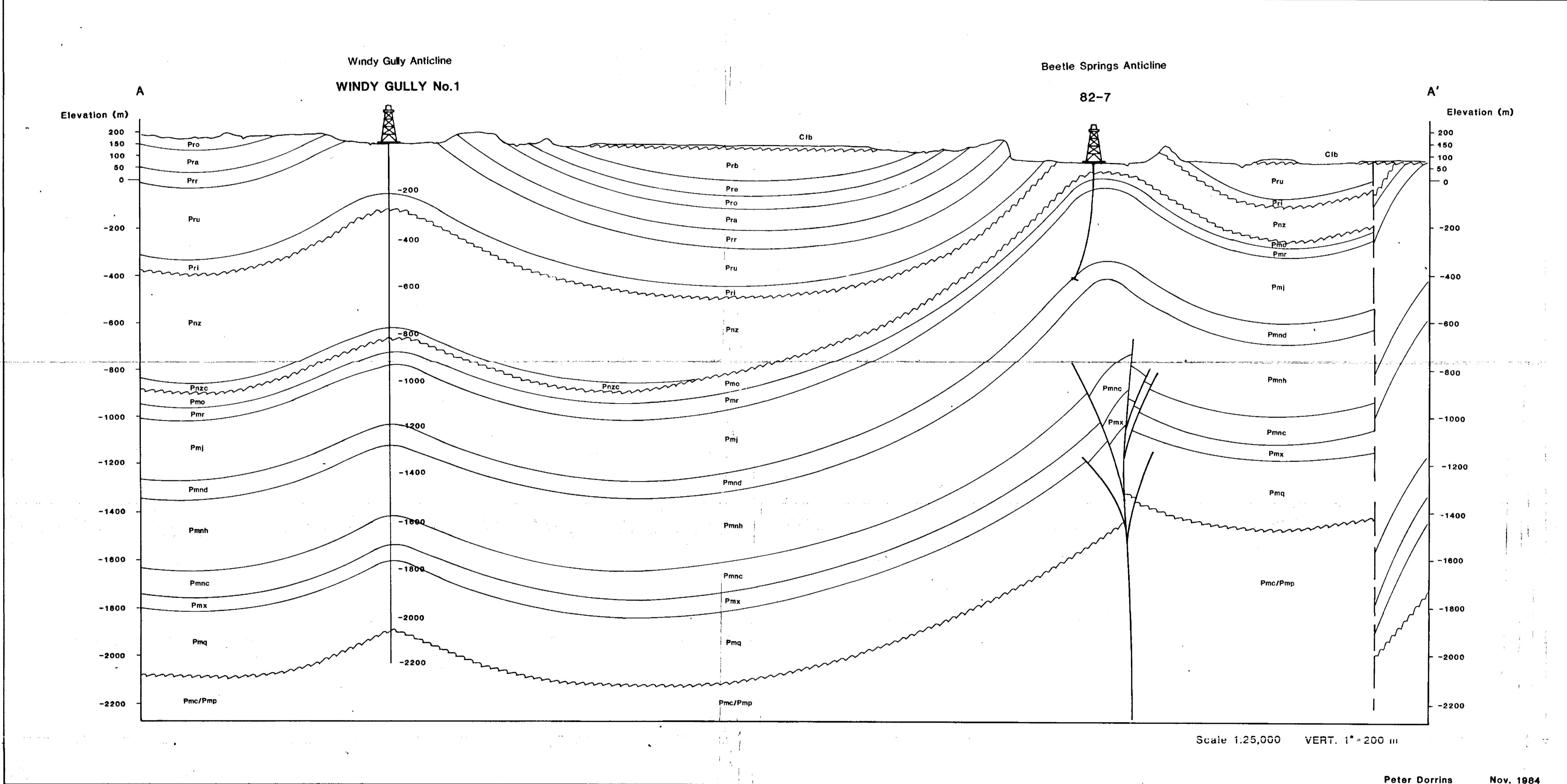
**LEGEND**

Czs	Cenozoic Cover
Kl	Cretaceous Clastics
Cib	Bukalara Sandstone
Prl	Lansen Creek Member (Cobanbirini Fm.)
Prc	Bessie Creek Sandstone
Pro	Corcoran Formation
Pra	Abner Sandstone
Prr	Crawford Formation
Prs	Mainoru Formation
Prg	Kilgour Sandstone Member
Prh	Limmen Sandstone
Pri	Dungaminie Formation
Prl	Balbirini Dolomite (incl. basal cgl.)
Pmo	Looking Glass Formation
Pm1	Siretton Sandstone
Pm2	Yalco Formation
Pm3	Lynott Formation
Pm4	Donnegan Member
Pm5	Hot Springs Member
Pm6	Caranbirini Member
Pm7	Reward Dolomite
Pm8	Barney Creek Formation
Pm9	Teena Dolomite

- Pri1 Limmen Sandstone
- Png Dungaminie Formation
- Pnz Balbirini Dolomite (incl. basal cgl.)
- Pmo Looking Glass Formation
- Pmr Stretton Sandstone
- Pmj Yalco Formation
- Pmn Lynott Formation
- Pmnd Donnegan Member
- Pmnh Hot Springs Member
- Pmnc Caranbirini Member
- Pmx Reward Dolomite
- Pmq Barney Creek Formation
- Pmj Teena Dolomite
- Pmc Coxco Dolomite Member
- Pme Emmerugga Dolomite
- Pmnd Mitchell Yard Dolomite Member
- Pmnc Mara Dolomite Member
- Pmj Myrtle Shale
- Pmi Leila Sandstone
- Touganinie Formation



Geology of the Abner Range  
Region, Northern Territory  
"Beetle Springs Anticline,"  
"Windy Gully Anticline" and  
"Tobalara Structure."  
Structure and Stratigraphy  
after P.J. Dorrins (Amoco)  
and T. Lepp (BHP).



GEOLOGICAL SURVEY PR 85-198 6.



Amoco Australia Petroleum Company

AUSTRALIA

GEOLOGY OF THE ABNER RANGE AREA

Scale: VARIES

Author: P.J. Dorrins  
Geology by BMR, 1984  
Date: NOVEMBER, 1984