

MEREENIE No.1

Composite Logs

Company	EXOIL (N.T) PTY LTD
Well Name	MEREENIE No.1
Field	MEREENIE
Nation	AUSTRALIA
State	NORTHERN TERRITORY
Latitude	023 59' 10.000" S DMS
Longitude	131 30' 10.000" E DMS
Perm. Datum	GL
Elevation KB (wrt EPD)	794.61 M
Elevation GL (wrt EPD)	791.26 M
Elev. Log Zero (wrt EPD)	794.61 M
Basin	AMADEUS
Spud Date	02 DEC 1964
TD Date	
Rig Release Date	02 APRIL 1964
Date Plotted	Wednesday, 7 October 2009
Time Plotted	1:54:36 PM

Run Information

Run number	1				
Log date	01-01-1964				
Depth-Driller	733.35 M				
Depth-Logger	733.35 M				
Bottom log interval	746.00 M				
Top log interval	249.02 M				
Casing-Driller	249.02 M				
Casing-Logger	249.02 M				
Casing Diameter	9.625 INCH				
Casing Weight	36.00 LB/F3				
Bit Size	8 750 INCH				

Bit Size	6.750 INCH				
Hole Fluid type	GEL				
Fluid Density	0.143 G/CC				
Fluid Viscosity	45.00 SEC				
Fluid PH	11				
Fluid Loss	180.00 C3				
RM @ Surface	1.800 OHMM				
Mud temp @ Surface	27.22 DEGC				
RMF @ Surface	1.600 OHMM				
MF temp @ Surface	34.44 DEGC				
MC temp @ Bottom	40.00 DEGC				
Bottom hole temp	40.00 DEGC				
Max recorded temp	40.00 DEGC				
Recorded by	HUSTEN				
Total depth	0.00				

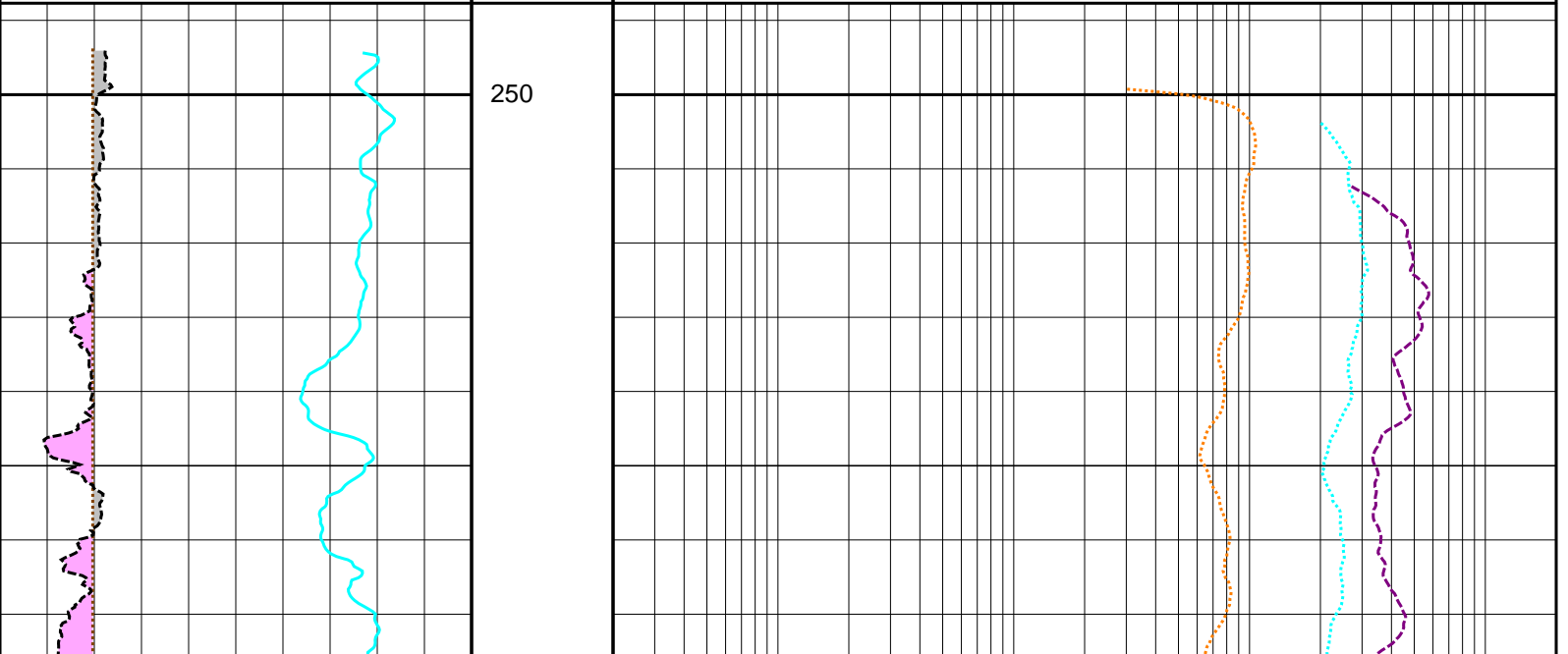
Logs loaded, edited and merged from 1 LIS format file by CDP in June 2009
 SP Log Baseline Shift and log smoothed
 Well header information completed from scanned PDF well header

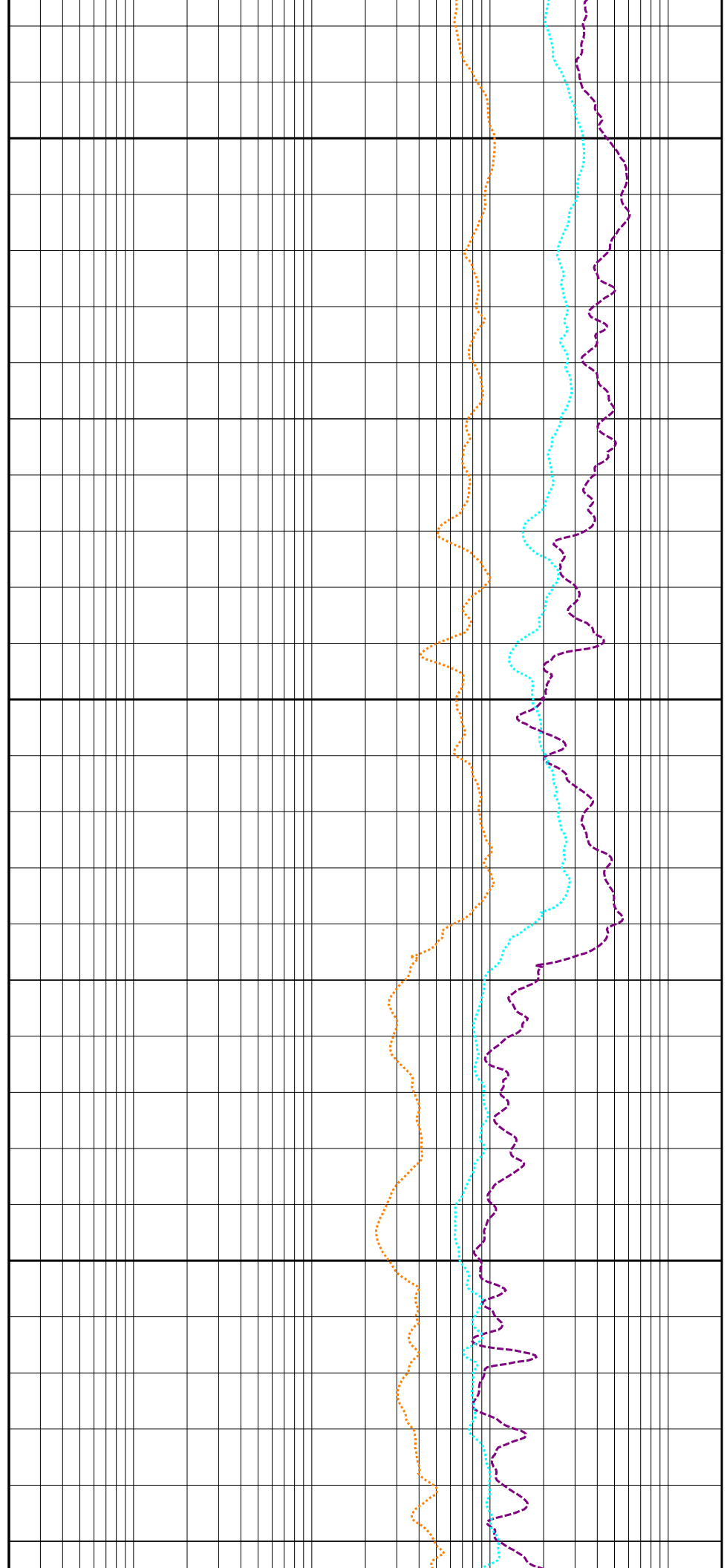
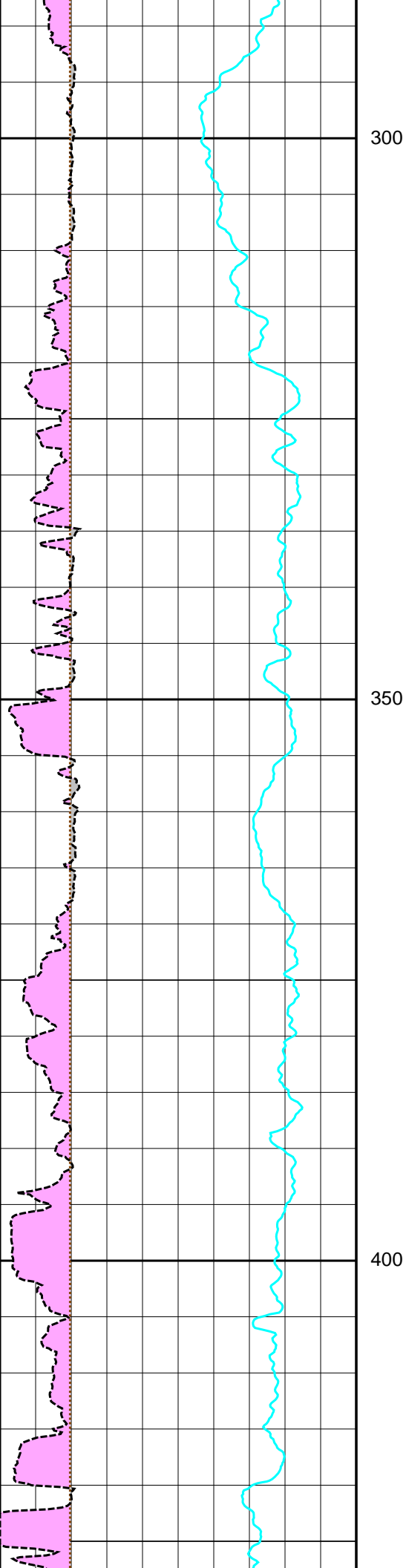
Since well log interpretations are opinions based upon inferences from well logs, we cannot and do not guarantee the correctness or accuracy of any interpretation. Therefore we shall not be liable or responsible for any loss, damage, cost or expense incurred or sustained by anyone resulting from any interpretation.

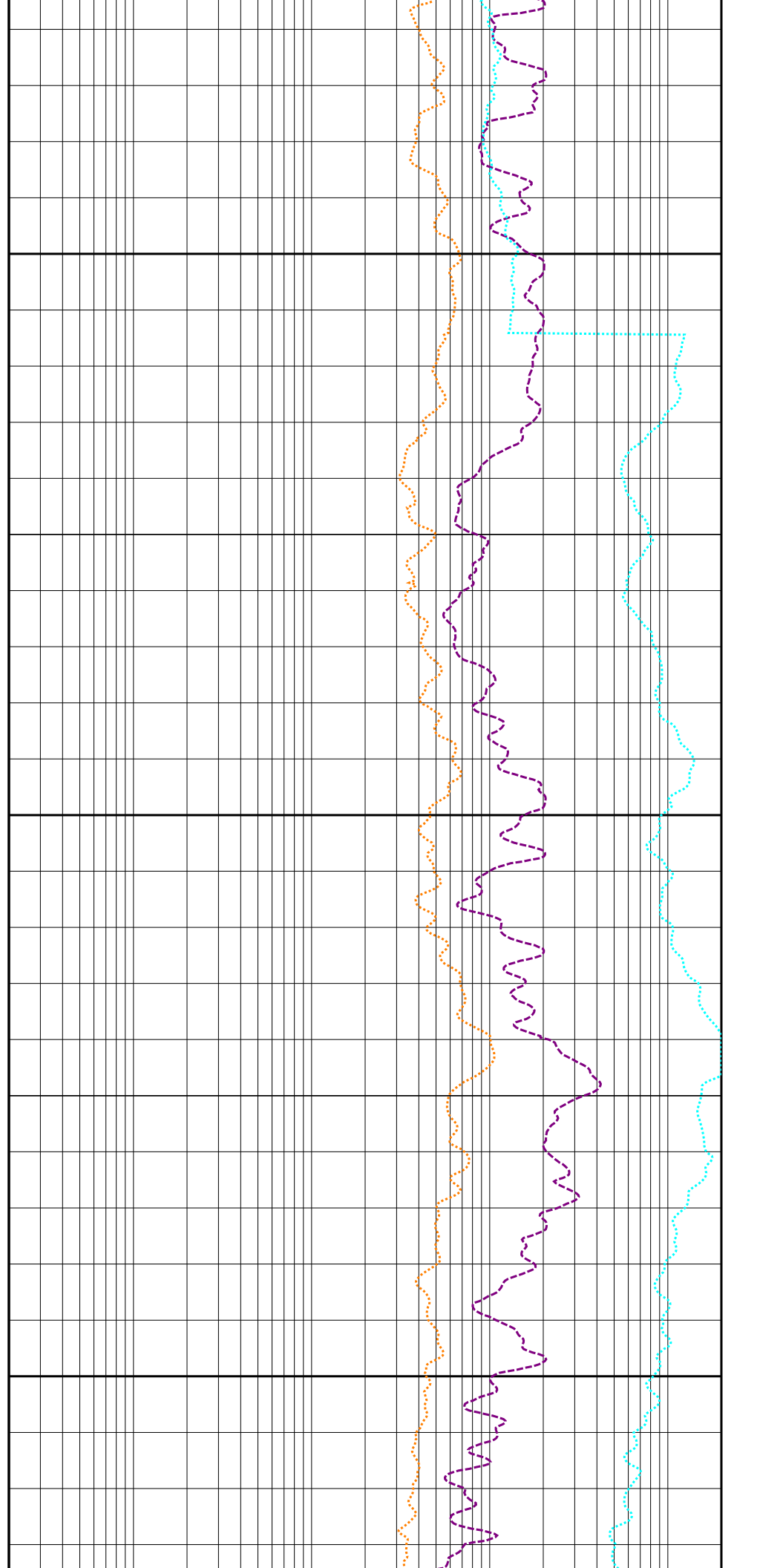
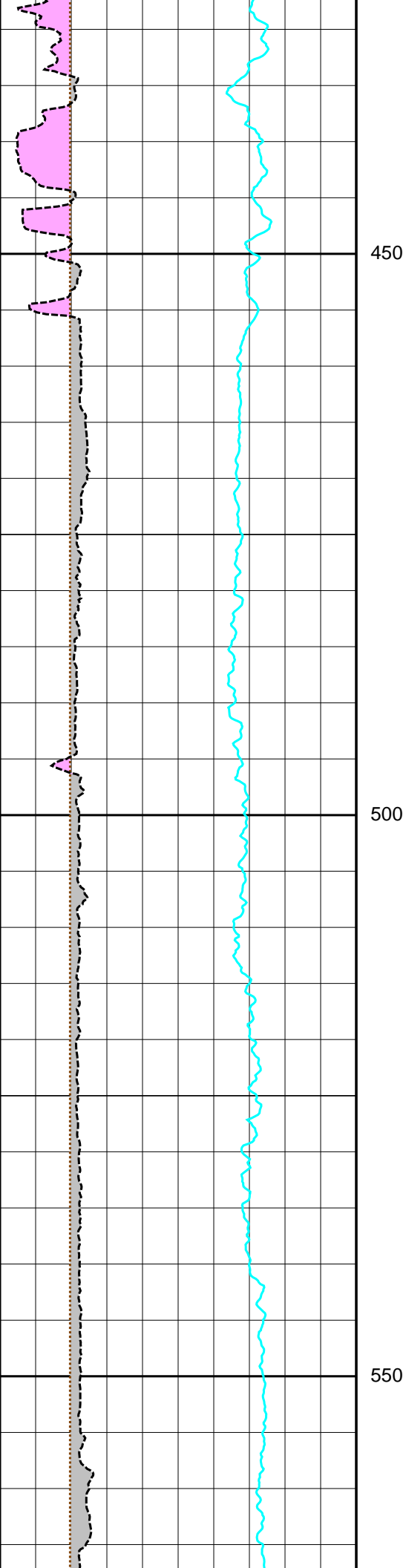
Log Description

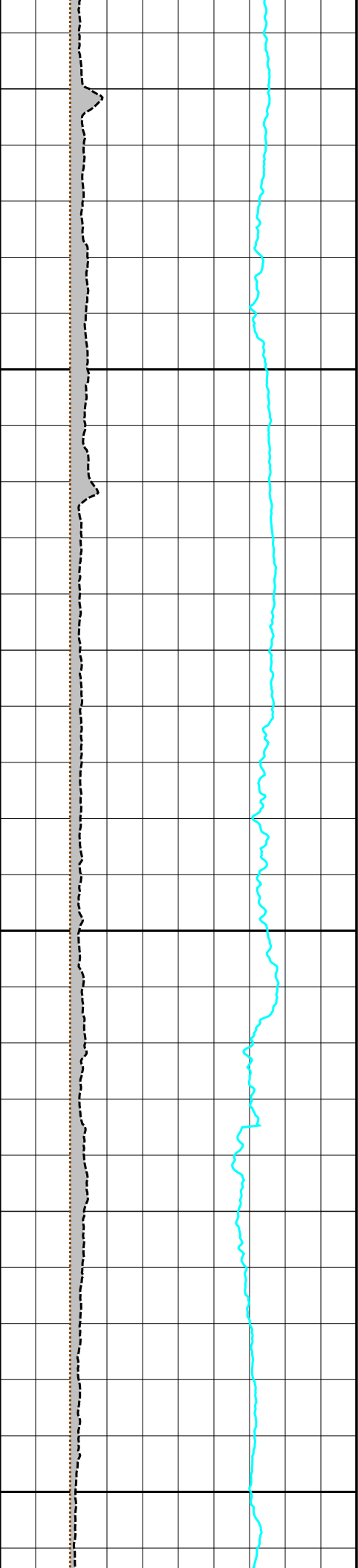
BS	Bit Size
CALI	Caliper
SP	Spontaneous Potential Log
LAT	Lateral Resistivity (18ft 8in spacing)
SN	Short Normal Resistivity
LN	Long Normal (64 inch spacing)

6.0	BS (INCH)	20.0	DEPTH	0.2	LAT (OHMM)	2000.0
6.0	CALI (INCH)	20.0	M	0.2	SN (OHMM)	2000.0
-80.0	SP (MV)	20.0	1:500	0.2	LN (OHMM)	2000.0





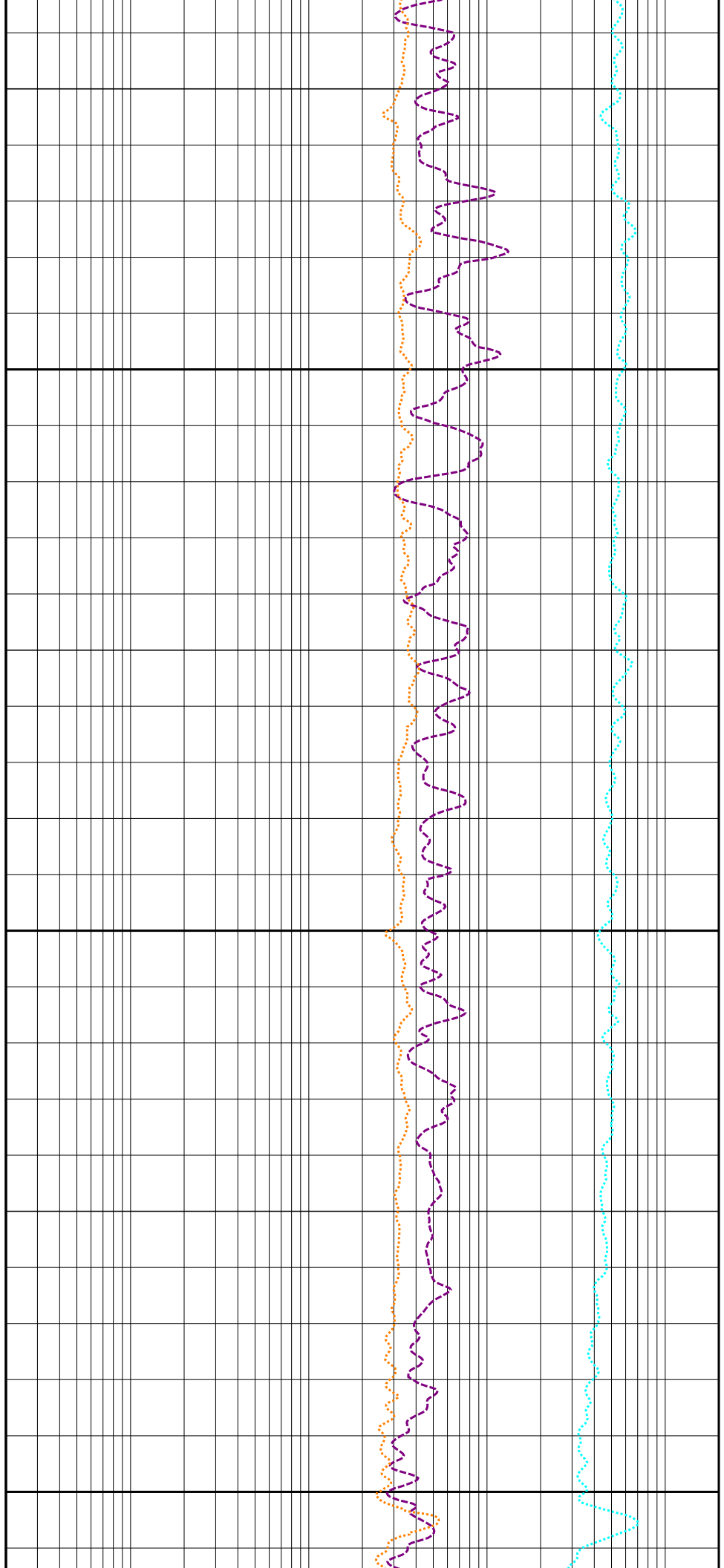


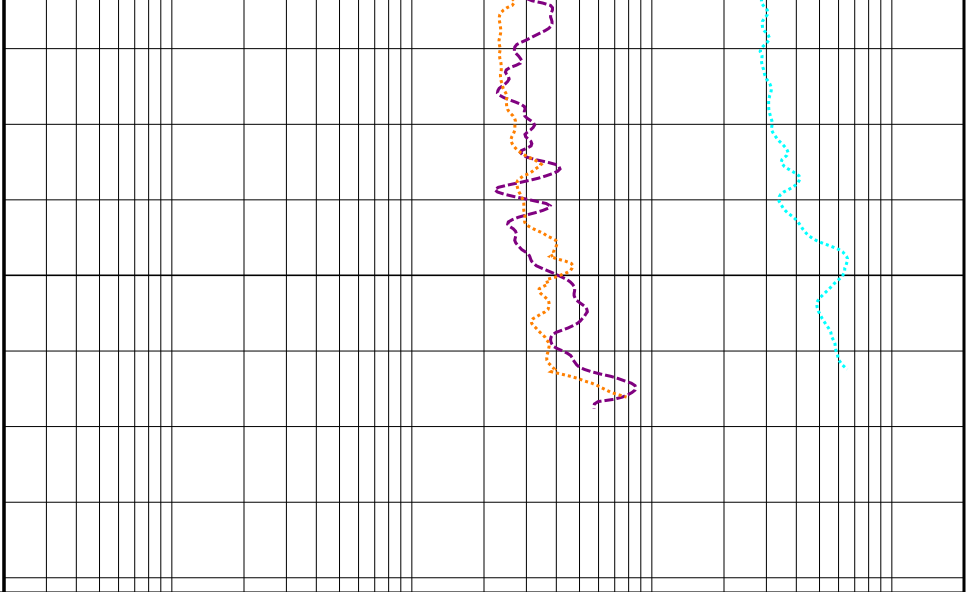
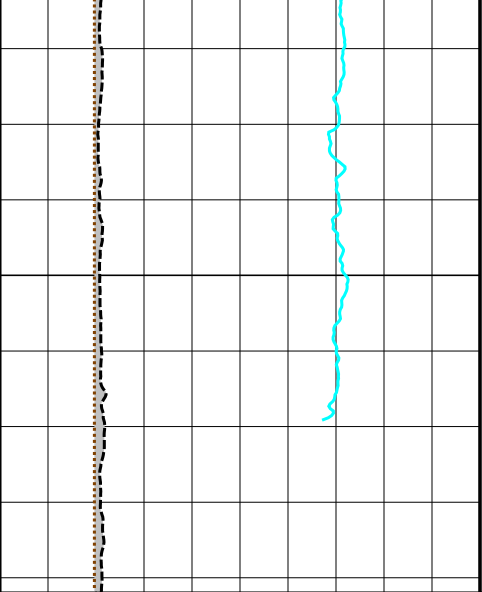


600

650

700





6.0	BS (INCH)	20.0
6.0	CALI (INCH)	20.0
-80.0	SP (MV)	20.0

DEPTH
M
1:500

0.2	LAT (OHMM)	2000.0
0.2	SN (OHMM)	2000.0
0.2	LN (OHMM)	2000.0