

MT CHARLOTTE-1

Composite Logs

Company	TRANSOIL (N.T.) PTY LTD
Well Name	MOUNT CHARLOTTE 1
Field	WILDCAT
Country	AUSTRALIA
Continent	AUSTRALIA
Field Location	OP 72
Latitude	024 52' 03.000" S DMS
Longitude	133 59' 11.000" E DMS
Perm. Datum	GL
Elevation Perm. Datum	379.78 M
Elevation KB (wrt EPD)	384.05 M
Elevation GL (wrt EPD)	379.78 M
Elev. Log Zero (wrt EPD)	384.05 M
Above Perm. Datum	4.27 M
Log measured from	KB
Drill measured from	KB
Services	IND. ELECTRIC, GUARD, VELOCITY GAMMA
Date Plotted	Wednesday, 7 October 2009
Time Plotted	2:06:28 PM

Run Information

Run number	1	2	3		
Log date	23-12-64	06-01-65	06-02-65		
Depth-Driller	558.09 M	1525.52 M	2116.23 M		
Depth-Logger	559.00 M	1524.61 M	2115.01 M		
Bottom log interval	557.17 M	1523.70 M	2114.09 M		
Top log interval	559.00 M	557.78 M	1493.52 M		
Casing-Driller	92.66 M	557.78 M	557.78 M		
Casing-Logger	92.35 M	557.78 M	557.78 M		
Casing Diameter	12.250 INCH	9.625 INCH	9.625 INCH		

Bit Size	12.500 INCH	8.750 INCH	8.750 INCH		
Hole Fluid type	Water Base	Salt Water Mud	Salt Water Mud		
Fluid Density		10.400 G/CC	10.800 G/CC		
Fluid Viscosity		32.00 SEC	42.00 SEC		
Fluid PH		6.5	5.0		
Fluid Loss			90.00 C3		
Mud Sample Source		Flowline	Flowline		
RM @ Surface		0.076 OHMM	0.054 OHMM		
Mud temp @ Surface		35.56 DEGC	32.22 DEGC		
RMF @ Surface		0.069 OHMM	0.048 OHMM		
MF temp @ Surface		35.56 DEGC	32.22 DEGC		
RMC @ Surface		0.081 OHMM	0.110 OHMM		
MC temp @ Surface		35.56 DEGC	32.22 DEGC		
RM @ Bottom		0.052 OHMM	0.031 OHMM		
Mud temp @ Bottom		57.78 DEGC	70.00 DEGC		
MC temp @ Bottom		57.78 DEGC	70.00 DEGC		
Bottom hole temp	94.00 DEGC	57.78 DEGC	70.00 DEGC		
Max recorded temp	94.00 DEGC	57.78 DEGC	70.00 DEGC		
Logging unit No	Truck	3222	3222		
Logging unit Loc	Aust				
Recorded by	T.J. Wall	Myers	Myers		
Witness	Perrymon	Perrymon	Perrymon		

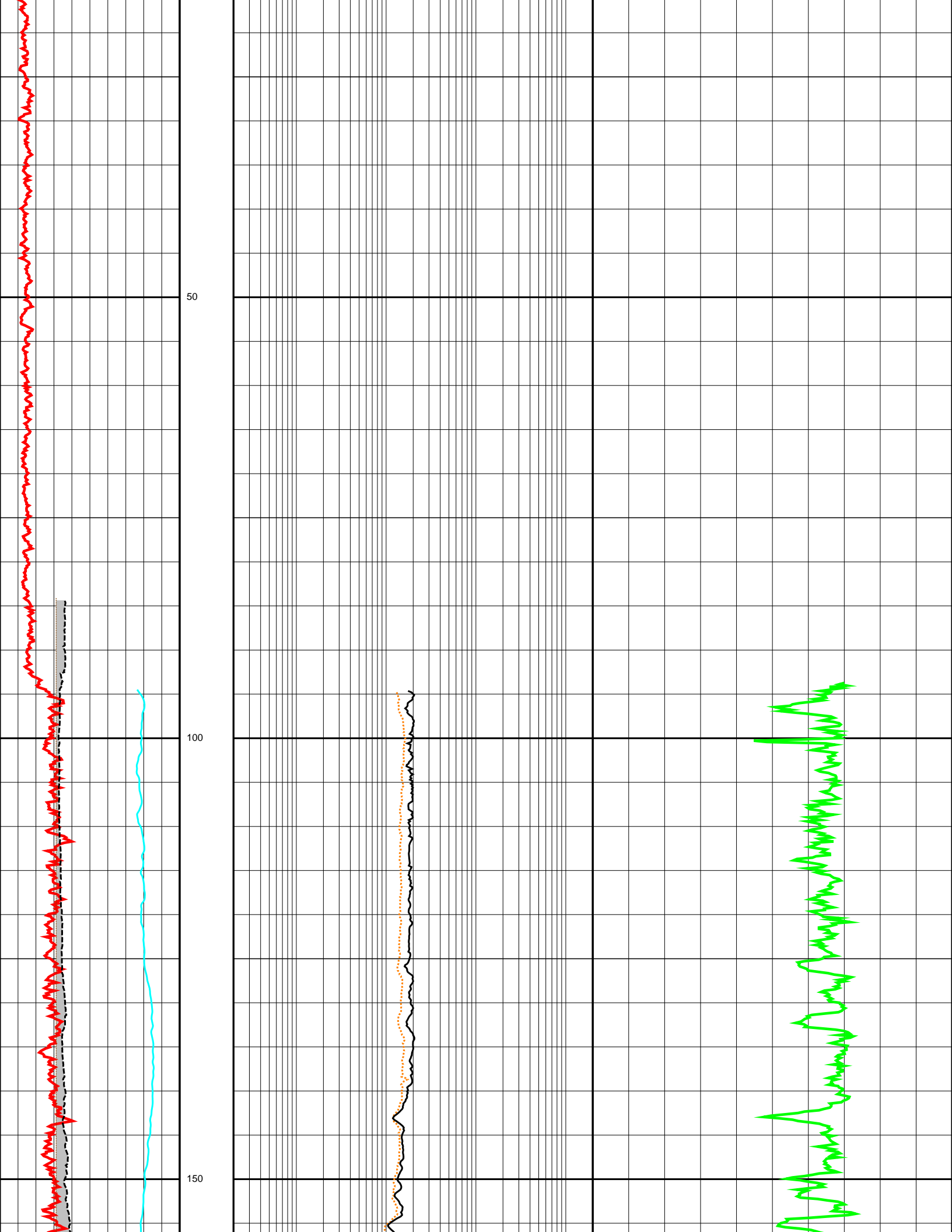
Logs loaded, edited and merged from 1 LIS format file by CDP in June 2009
DT Logs has been despiked & SP Log Baseline Shift and log smoothed
Well header information completed from scanned PDF well header

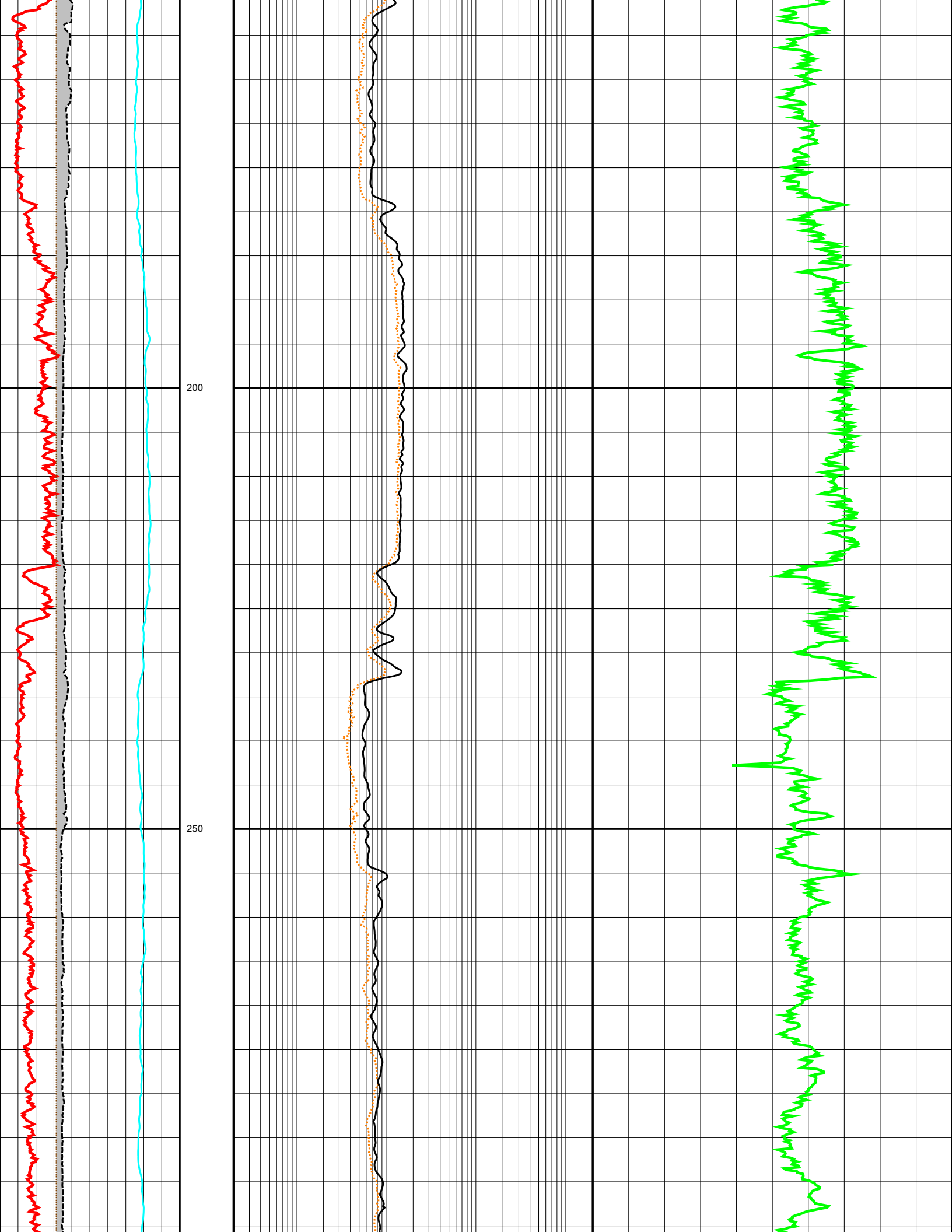
Since well log interpretations are opinions based upon inferences from well logs, we cannot and do not guarantee the correctness or accuracy of any interpretation. Therefore we shall not be liable or responsible for any loss, damage, cost or expense incurred or sustained by anyone resulting from any interpretation.

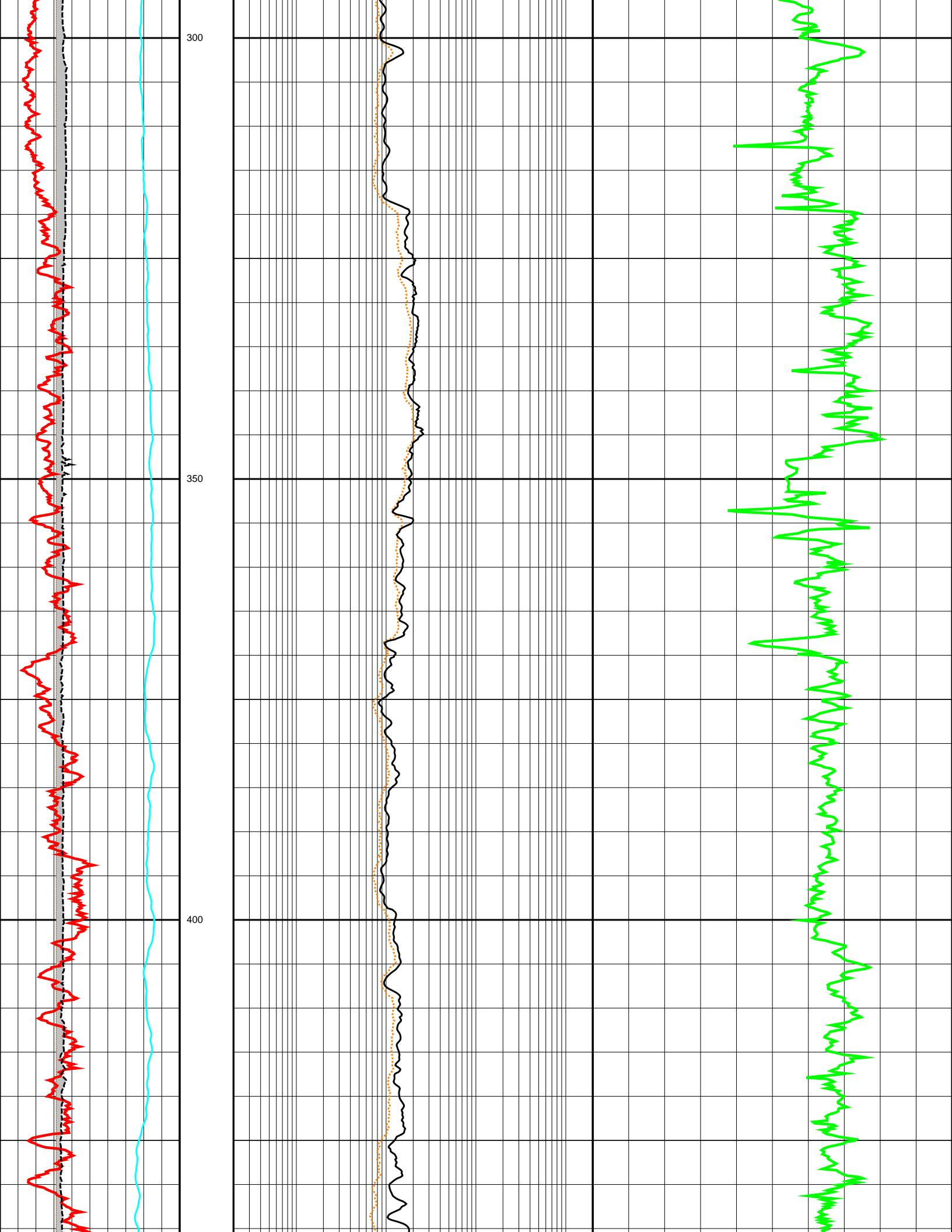
Log Description

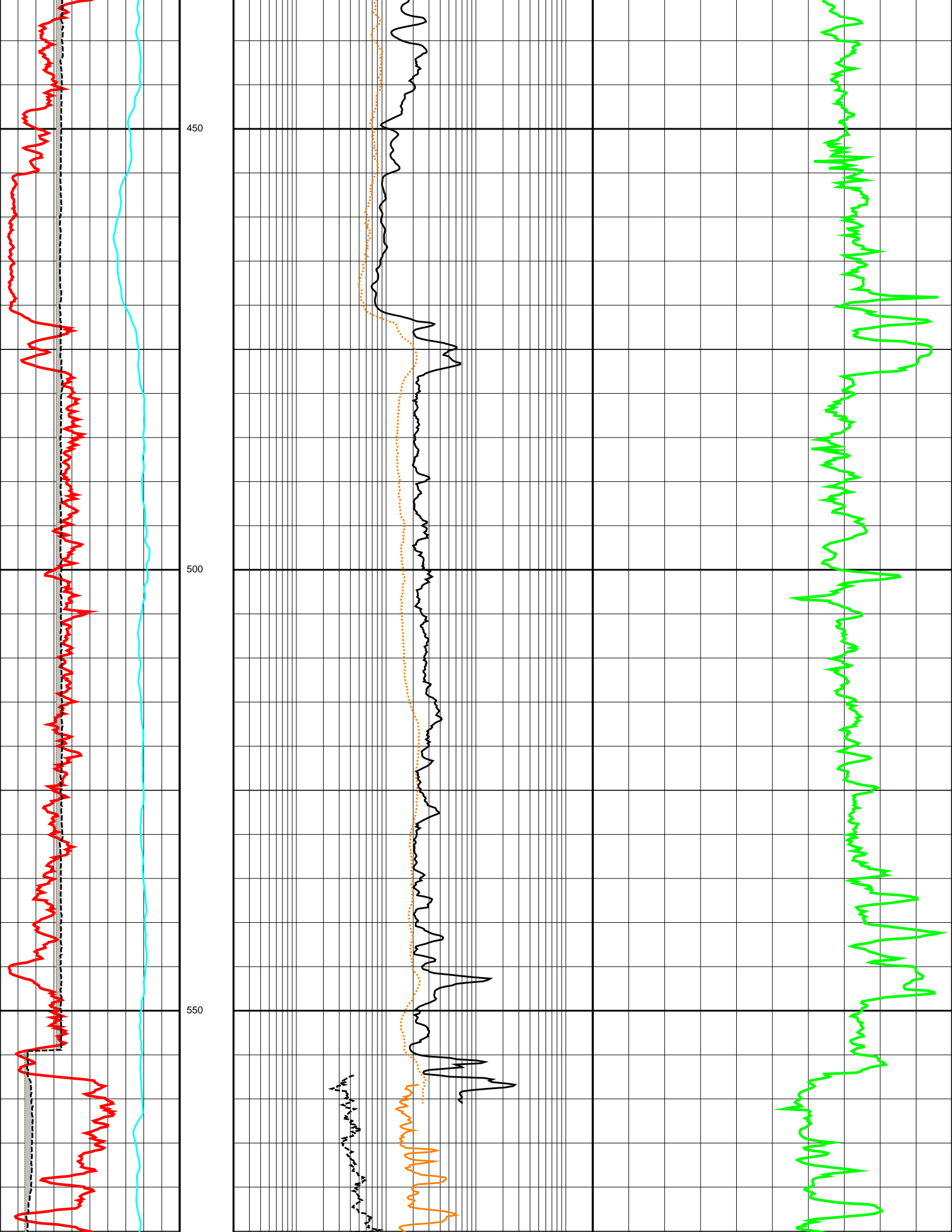
- GR Gamma Ray
- CALI Caliper
- SP Spontaneous Potential Log
- LL3 Laterolog 3
- SN Short Normal Resistivity
- DT Delta T Compressional
- PROX Proximity Resistivity
- IND Induction Log
- BS Bit Size

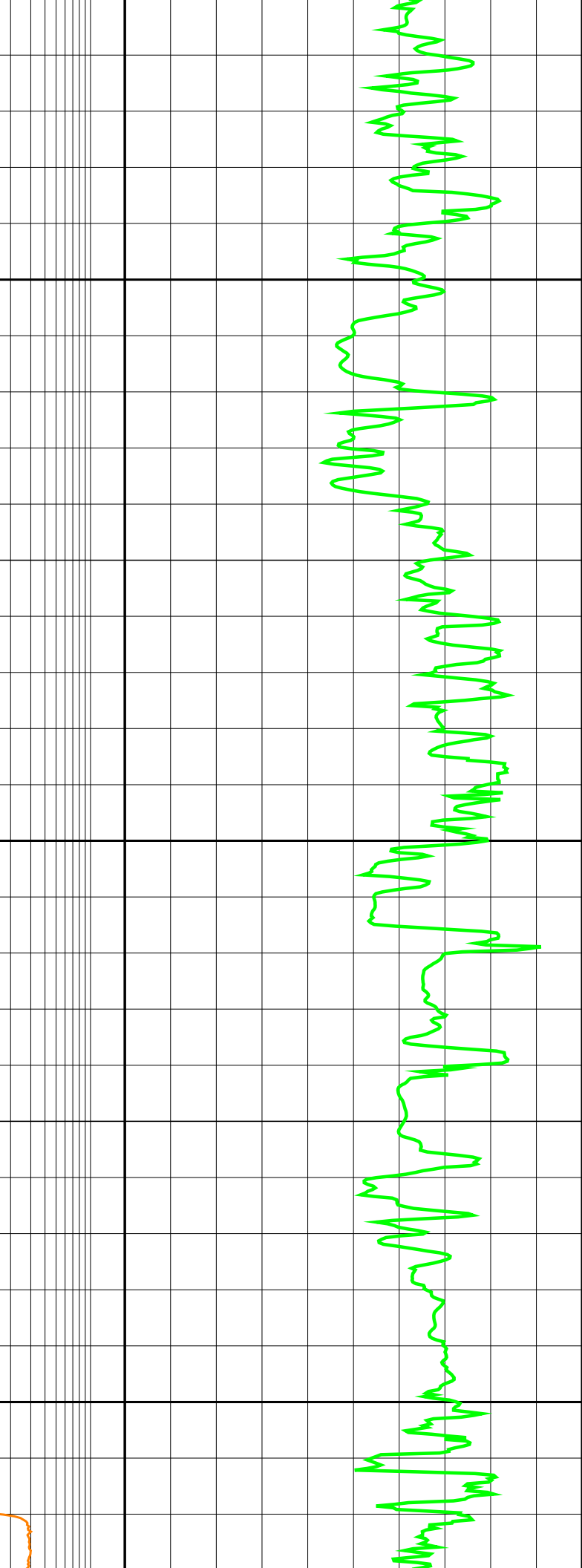
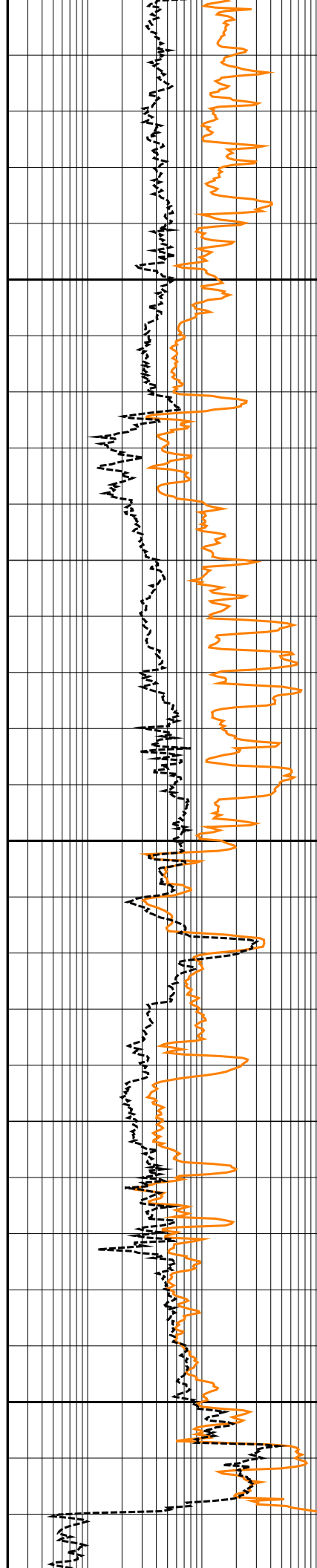
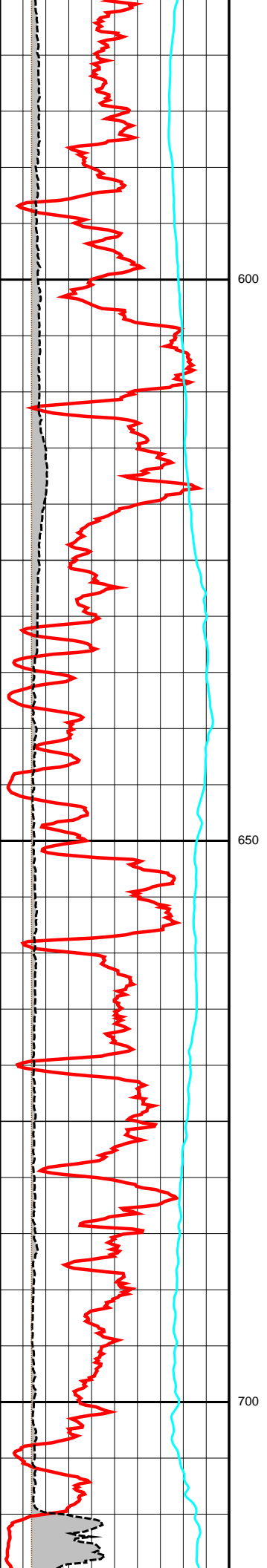
DEPTH	GR (API)	CALI (INCH)	SP (MV)	BS (INCH)	LL3 (OHMM)	SN (OHMM)	PROX (OHMM)	IND (OHMM)	DT (US/F)
0.0	200.0	26.0	20.0	26.0	2000.0	2000.0	2000.0	2000.0	140.0
6.0		26.0	20.0	26.0	2000.0	2000.0	2000.0	2000.0	40.0
80.0		26.0	20.0	26.0	2000.0	2000.0	2000.0	2000.0	40.0
6.0		26.0	20.0	26.0	2000.0	2000.0	2000.0	2000.0	40.0

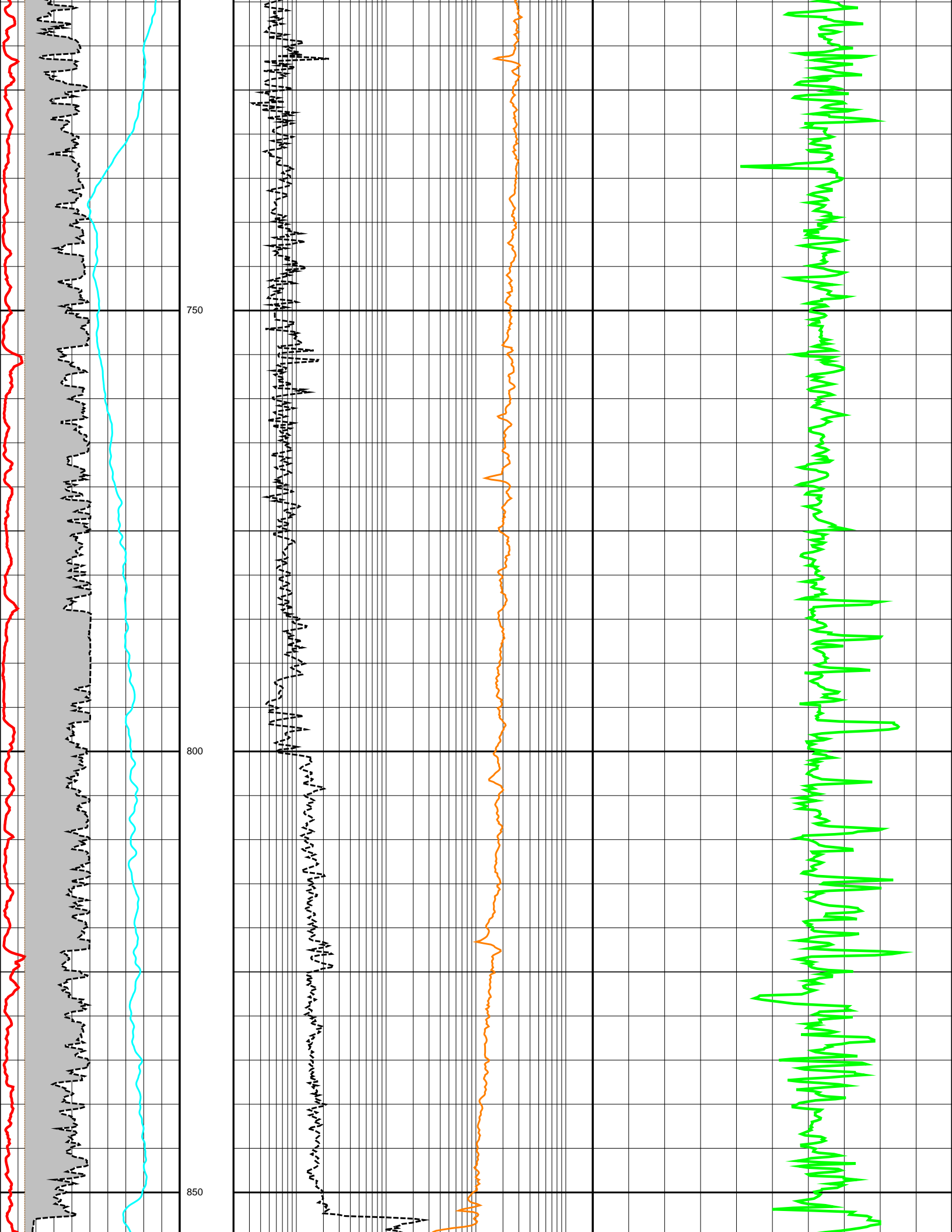


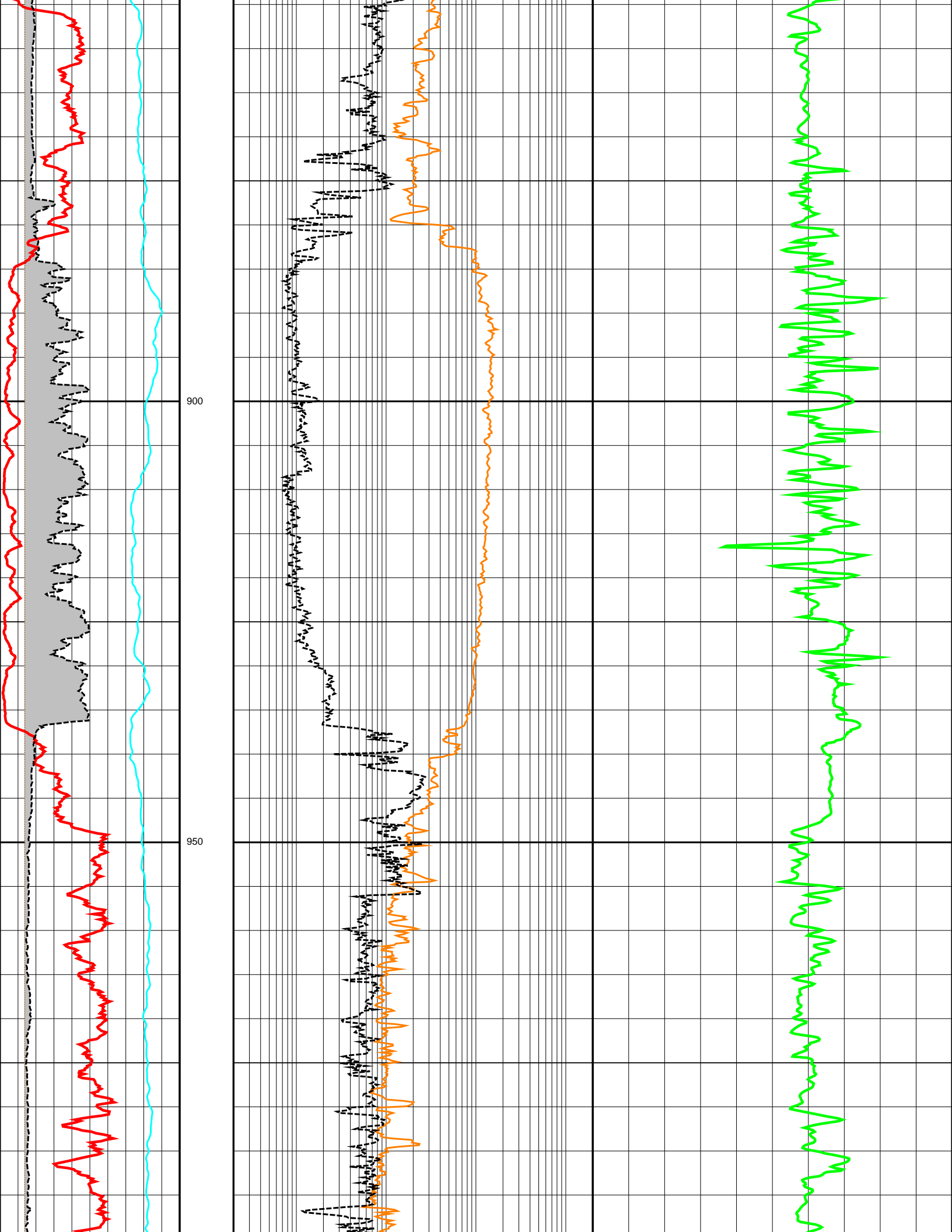


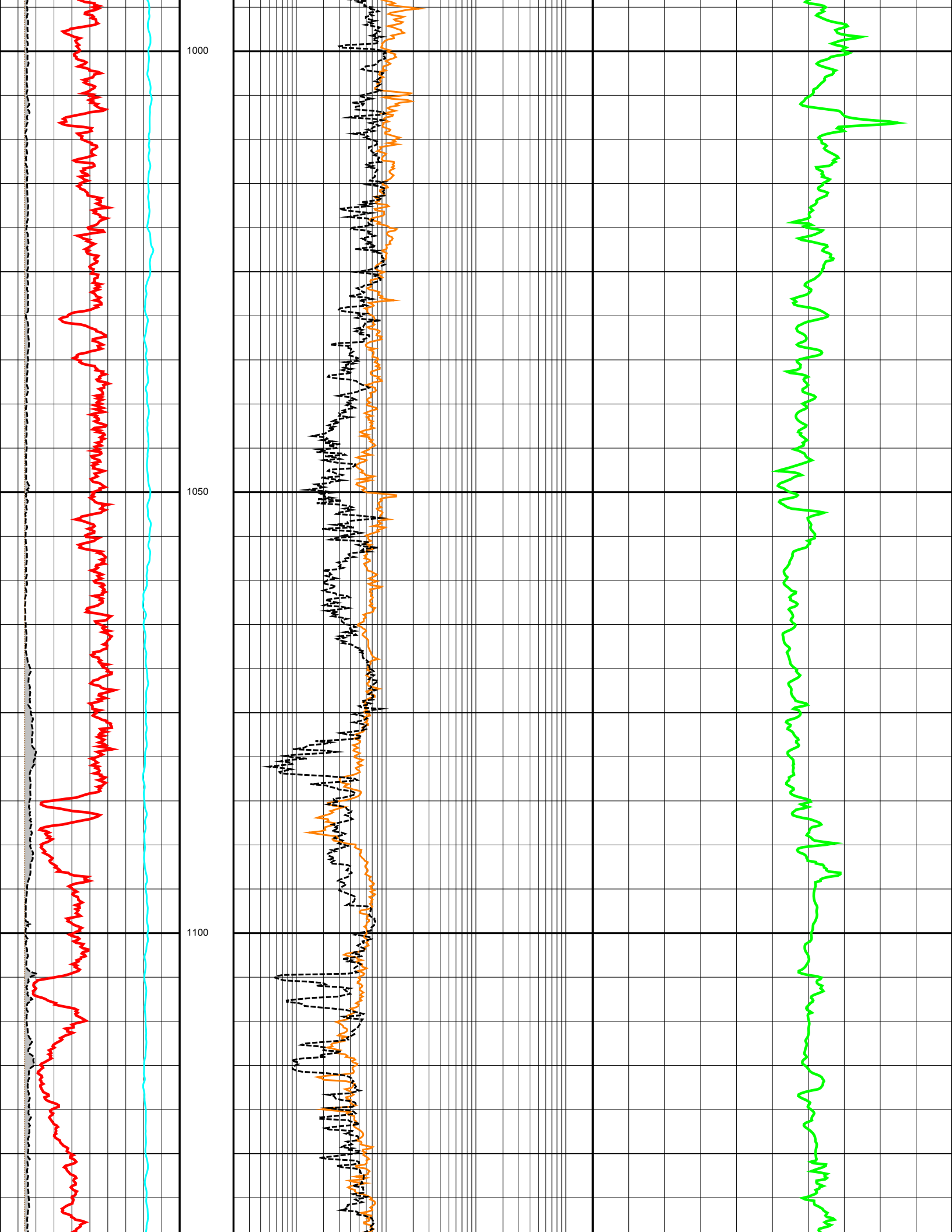


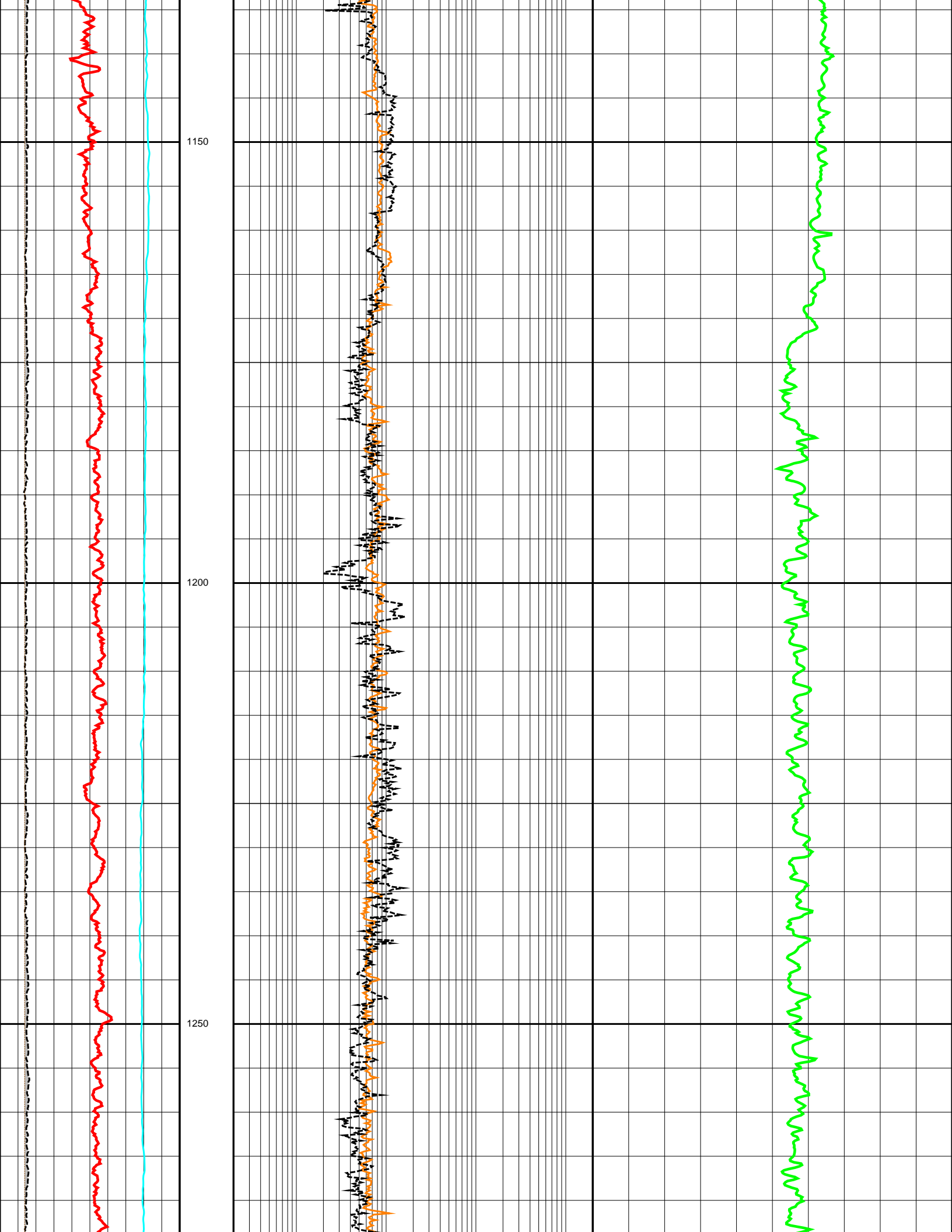


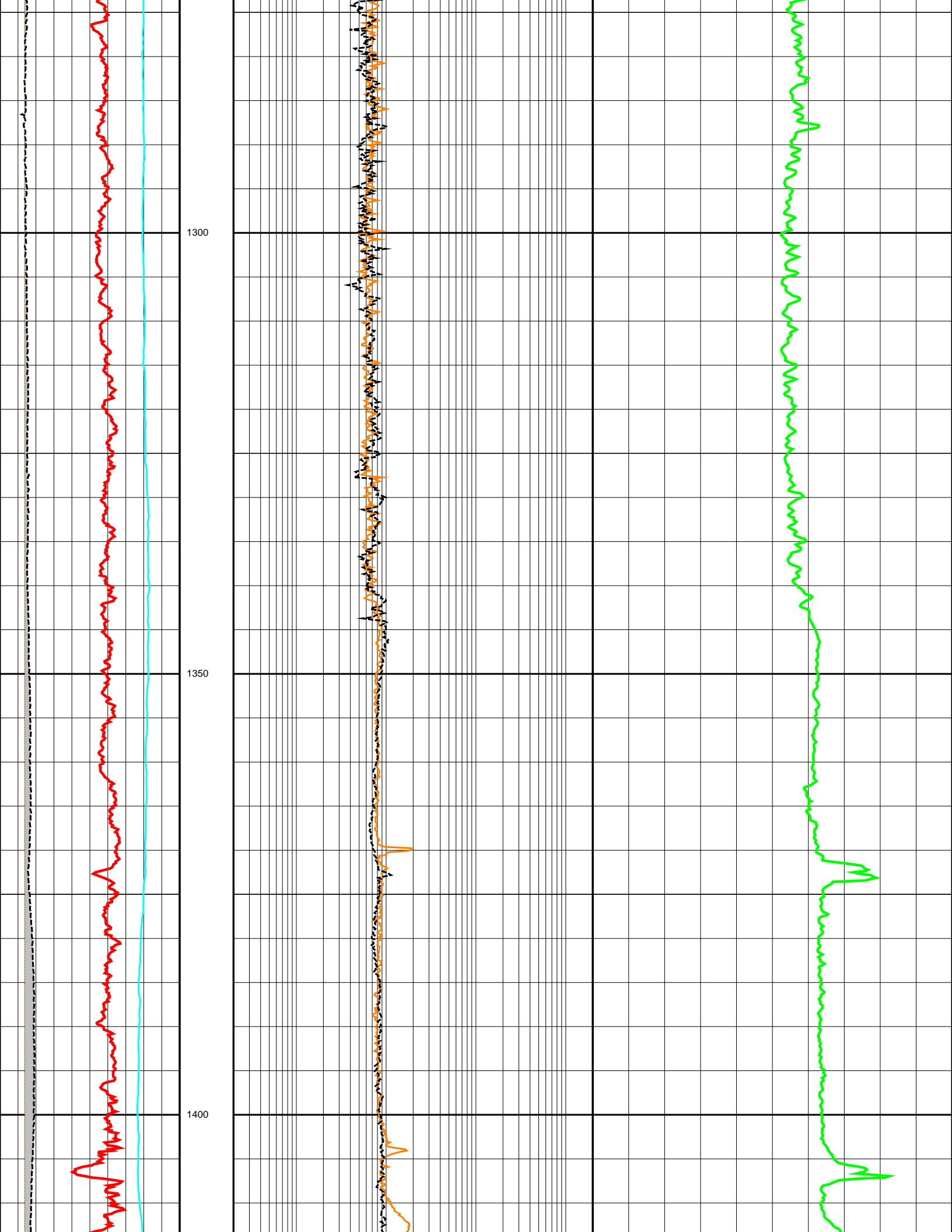


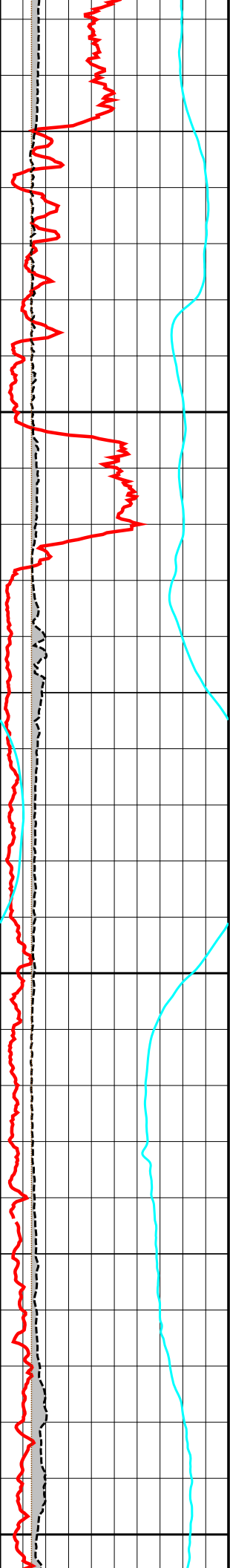








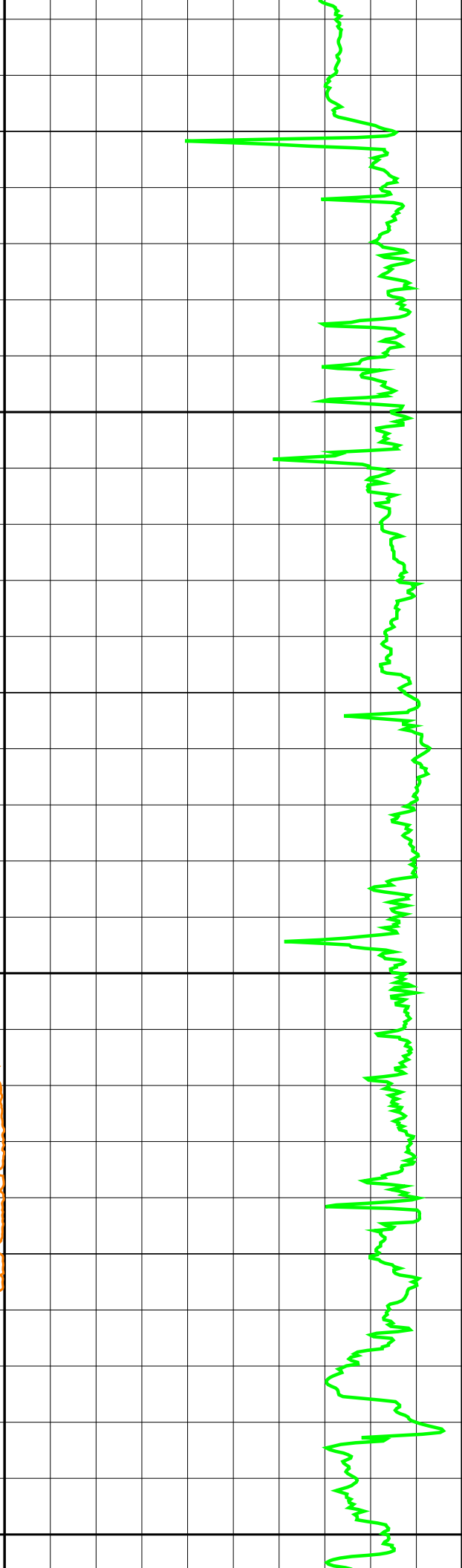
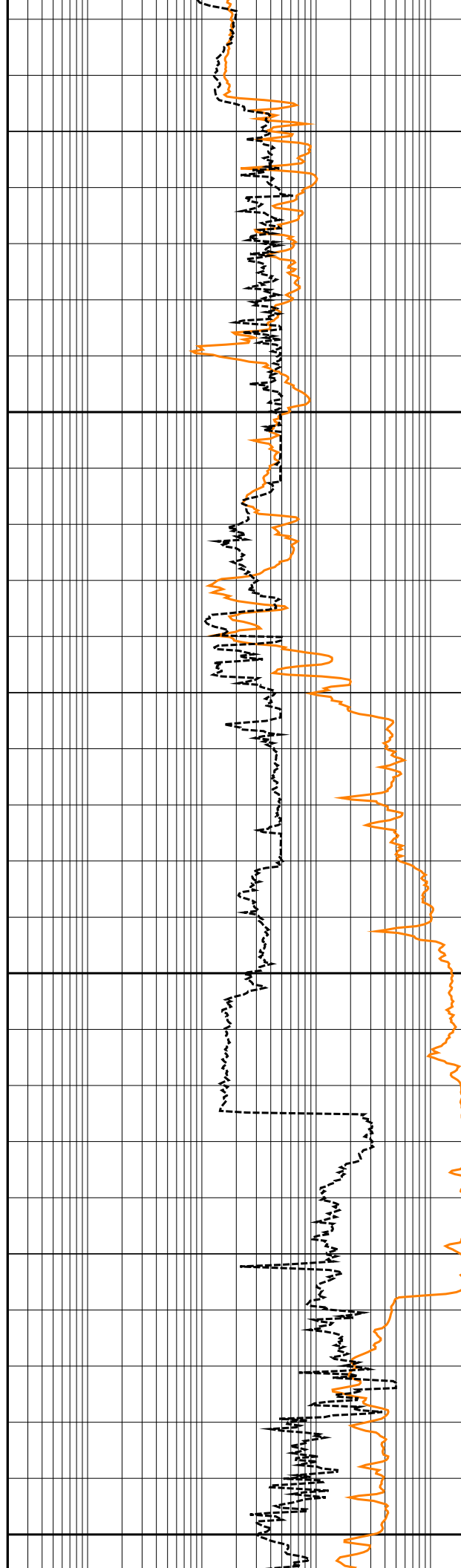


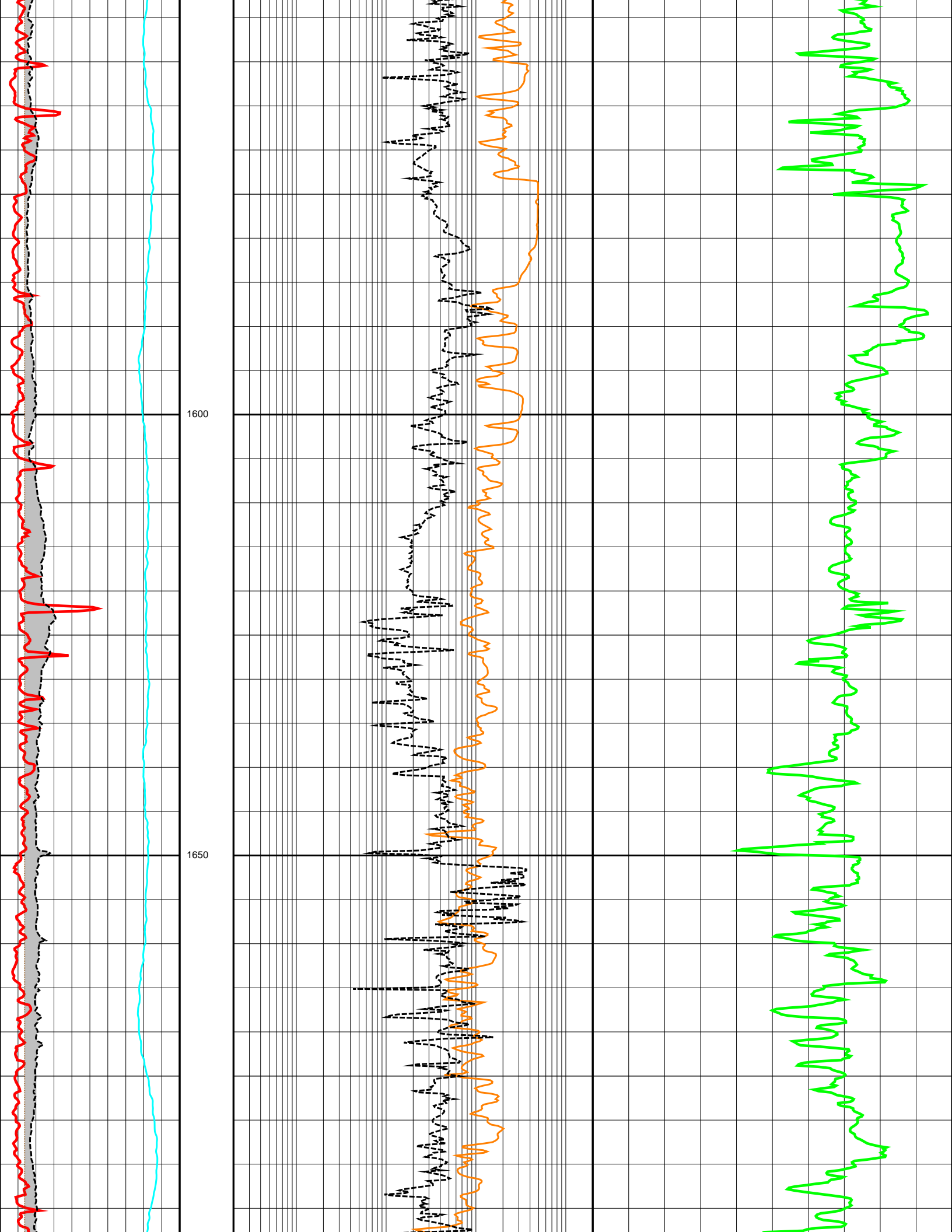


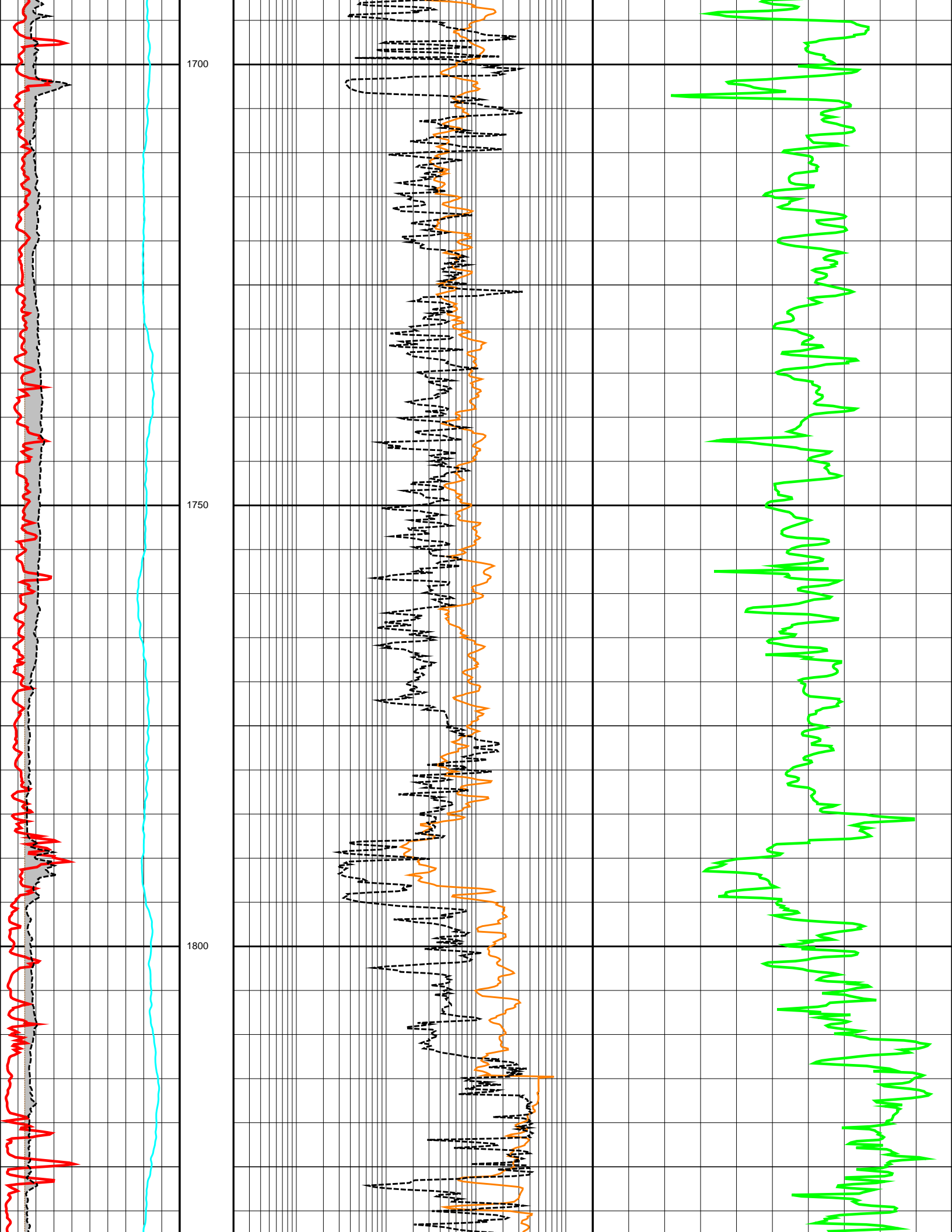
1450

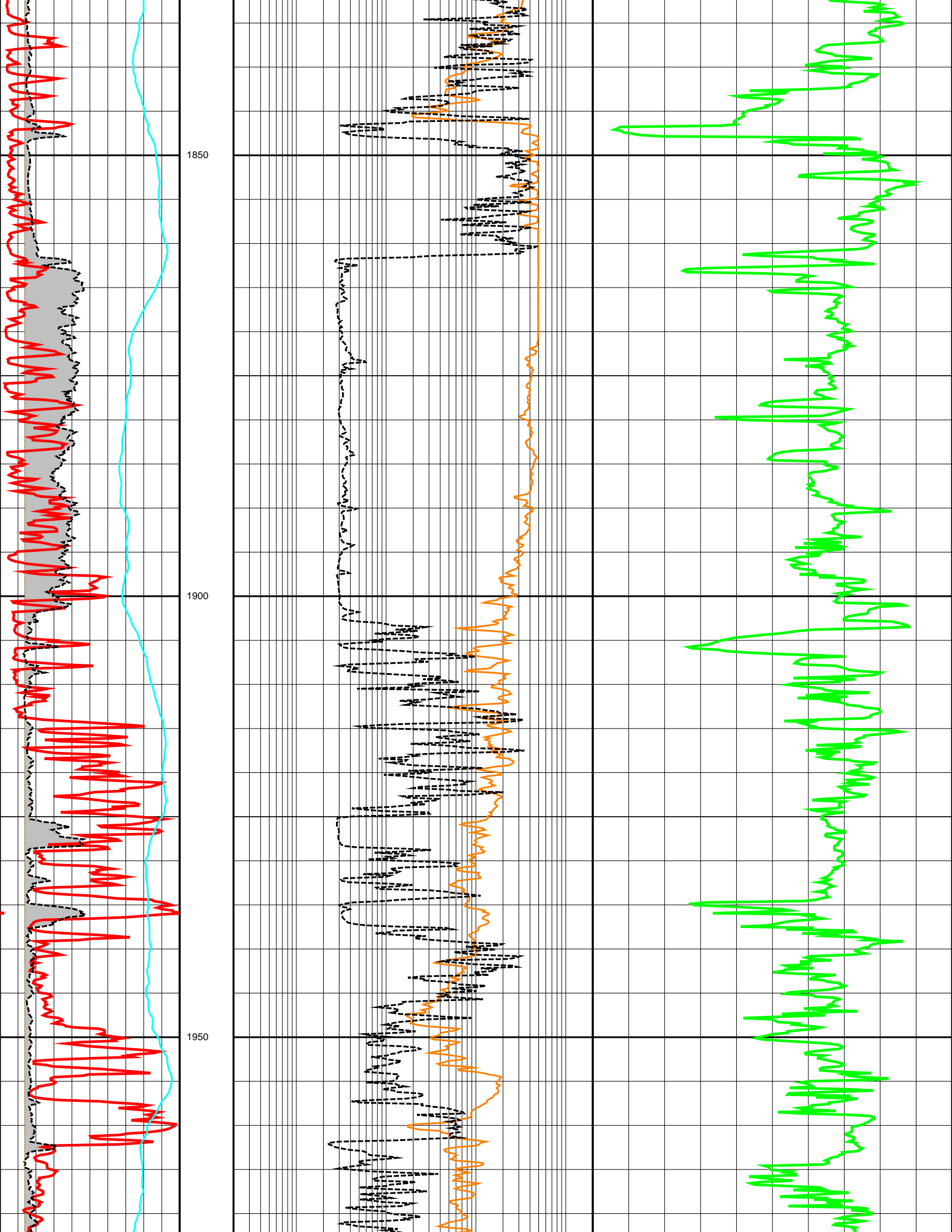
1500

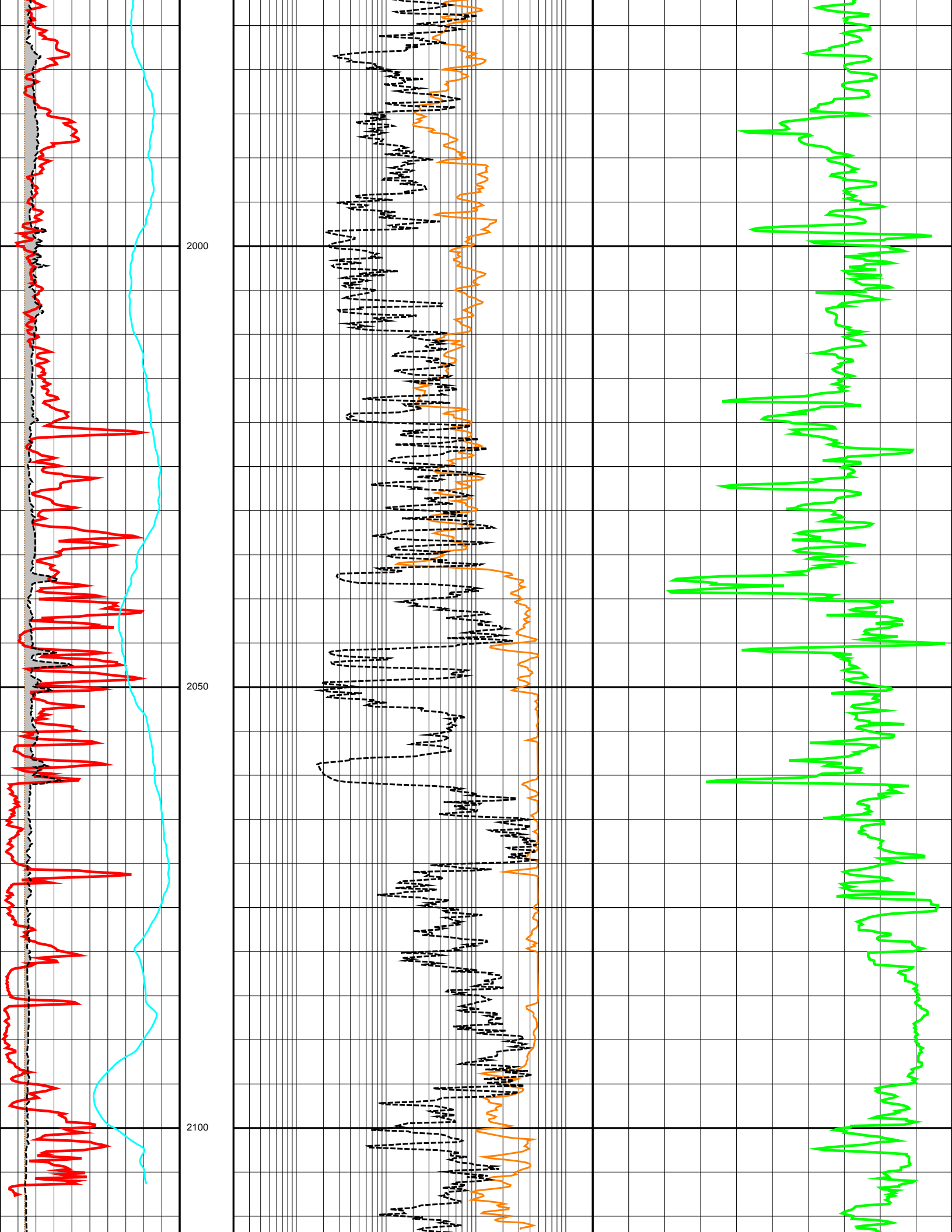
1550











0.0	GR (API)	200.0	DEPTH	0.2	LL3 (OHMM)	2000.0	140.0	DT (US/F)	40.0
6.0	CALI (INCH)	26.0	M	0.2	SN (OHMM)	2000.0			
-80.0	SP (MV)	20.0	1:500	0.2	PROX (OHMM)	2000.0			
6.0	BS (INCH)	26.0		0.2	IND (OHMM)	2000.0			