

NW MEREENE No.1

Composite Logs

Company	MAGELLAN PETROLEUM COMPANY
Well Name	NORTH WEST MEREENE No. 1
Field	MEREENE
Country	AUSTRALIA
State	NORTHERN TERRITORY
Continent	AUSTRALIA
Latitude	023 53' 22.000" S DMS
Longitude	131 22' 27.000" E DMS
Perm. Datum	GL
Elevation Perm. Datum	726.95 M
Elevation KB (wrt EPD)	732.13 M
Elevation DF (wrt EPD)	731.22 M
Elevation GL (wrt EPD)	726.95 M
Elev. Log Zero (wrt EPD)	726.95 M
Above Perm. Datum	5.18 M
Log measured from	KB
Drill measured from	KB
Services	I.E.S
Basin	AMADEUS
Spud Date	11-07-69
Rig Release Date	07-08-69
Date Plotted	Wednesday, 7 October 2009
Time Plotted	2:15:16 PM

Run Information

Run number	ONE				
Log date	05-08-69				
Depth-Driller	1524.00 M				
Depth-Logger	1524.91 M				
Bottom log interval	1523.39 M				

Top log interval	597.71 M				
Casing-Driller	598.32 M				
Casing-Logger	597.71 M				
Casing Diameter	9.625 INCH				
Casing Weight	36.00 LB/F3				
Casing Depth	598.32 M				
Bit Size	8.750 INCH				
Hole Fluid type	SALT WATER AND G				
Fluid Density	8.500 G/CC				
Fluid Viscosity	36.00 SEC				
Fluid PH	6.5				
Mud Sample Source	PIT				
RM @ Surface	4.400 OHMM				
Mud temp @ Surface	25.56 DEGC				
RMF @ Surface	4.220 OHMM				
MF temp @ Surface	25.56 DEGC				
RMC @ Surface	4.600 OHMM				
MC temp @ Surface	25.56 DEGC				
Mud Filtrate Sample Source	PRESS				
Mud Cake Sample Source	PRESS				
RM @ Bottom	2.850 OHMM				
Mud temp @ Bottom	58.33 DEGC				
Bottom hole temp	58.33 DEGC				
Logging unit No	7343				
Logging unit Loc	ALICE				
Recorded by	PATTERSON:MORE				
Witness	MAGEE:PEARCE				

Logs loaded, edited and merged from 1 LIS format file by CDP in June 2009
 SP Log Baseline Shift and log smoothed
 Well header information completed from scanned PDF well header

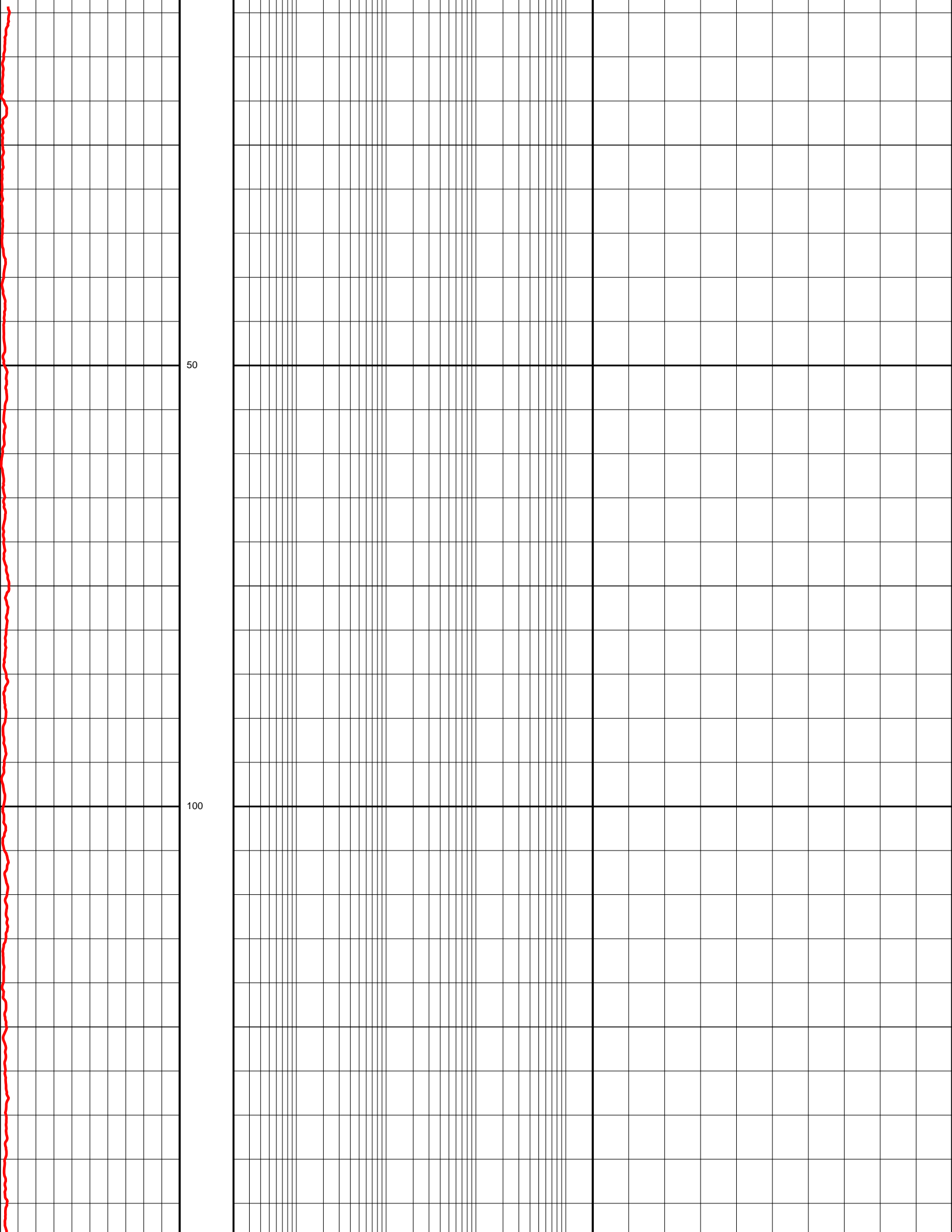
Since well log interpretations are opinions based upon inferences from well logs, we cannot and do not guarantee the correctness or accuracy of any interpretation. Therefore we shall not be liable or responsible for any loss, damage, cost or expense incurred or sustained by anyone resulting from any interpretation.

Log Description

- GR Gamma Ray
- CALI Caliper
- SP Spontaneous Potential Log
- SN Short Normal Resistivity
- DT Delta T Compressional
- IND Induction Log
- BS Bit Size

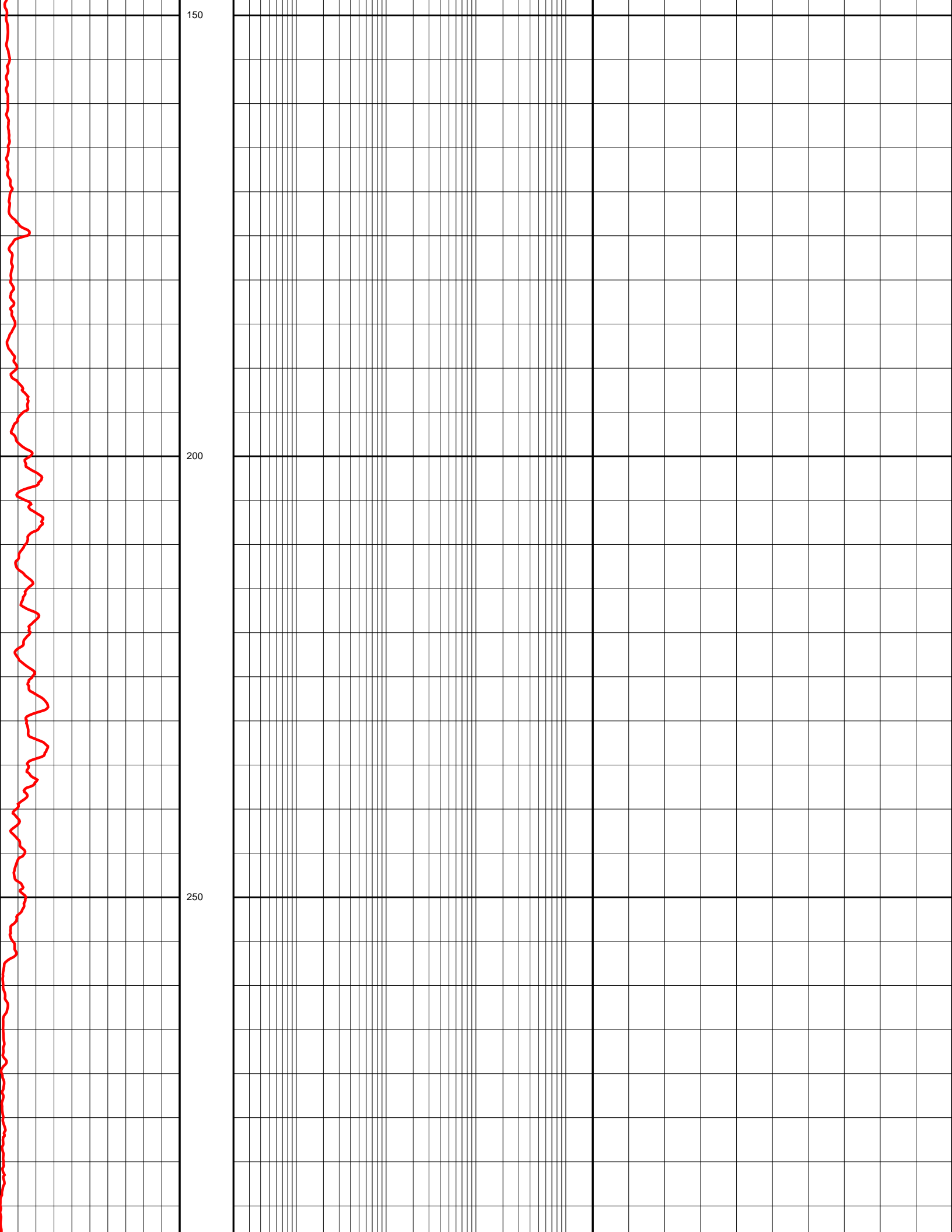
0.0	GR (API)	200.0	DEPTH	0.2	SN (OHMM)	2000.0	140.0	DT (US/F)	40.0
6.0	CALI (INCH)	26.0	M	0.2	IND (OHMM)	2000.0			
-80.0	SP (MV)	20.0	1:500						
6.0	BS (INCH)	26.0							

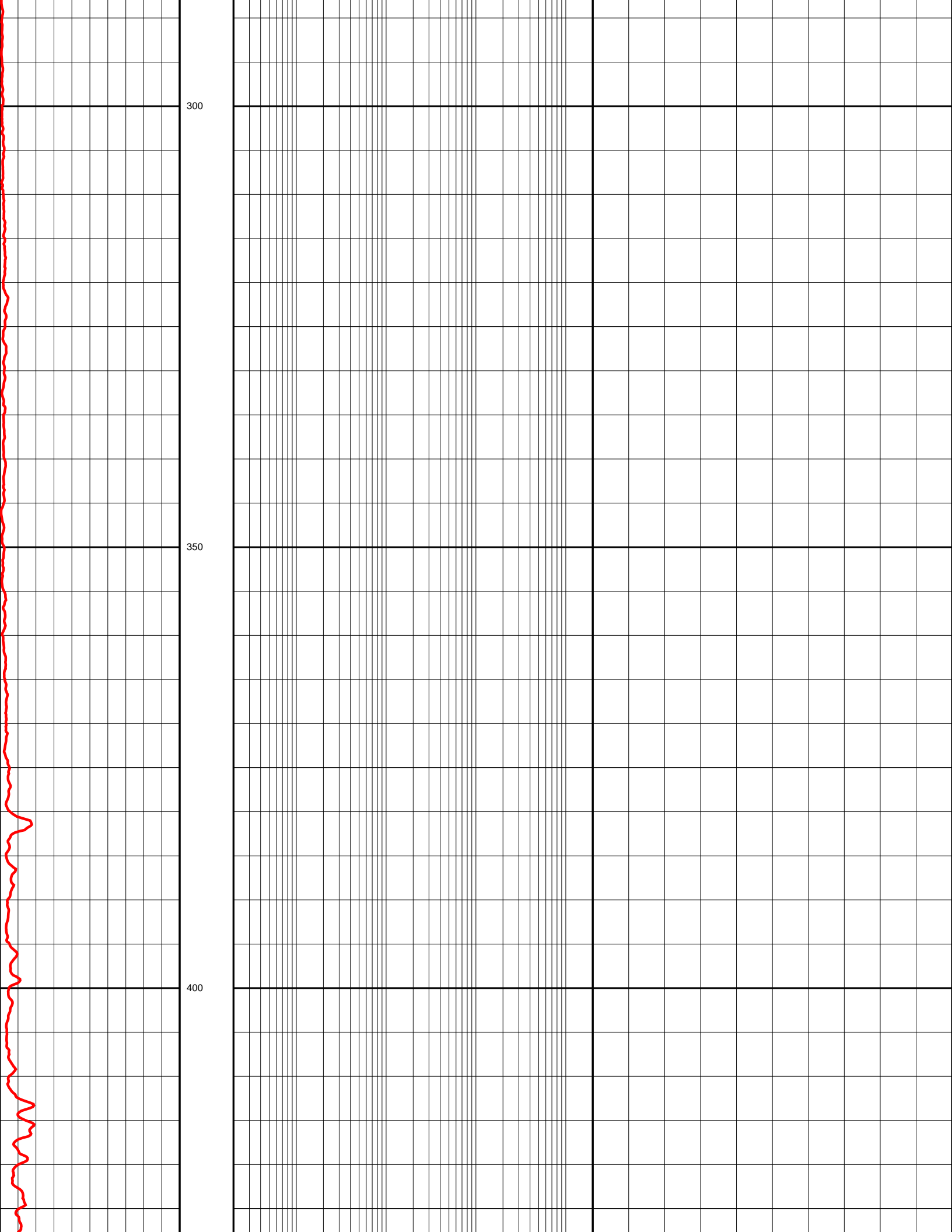
--	--	--	--	--	--	--	--	--	--

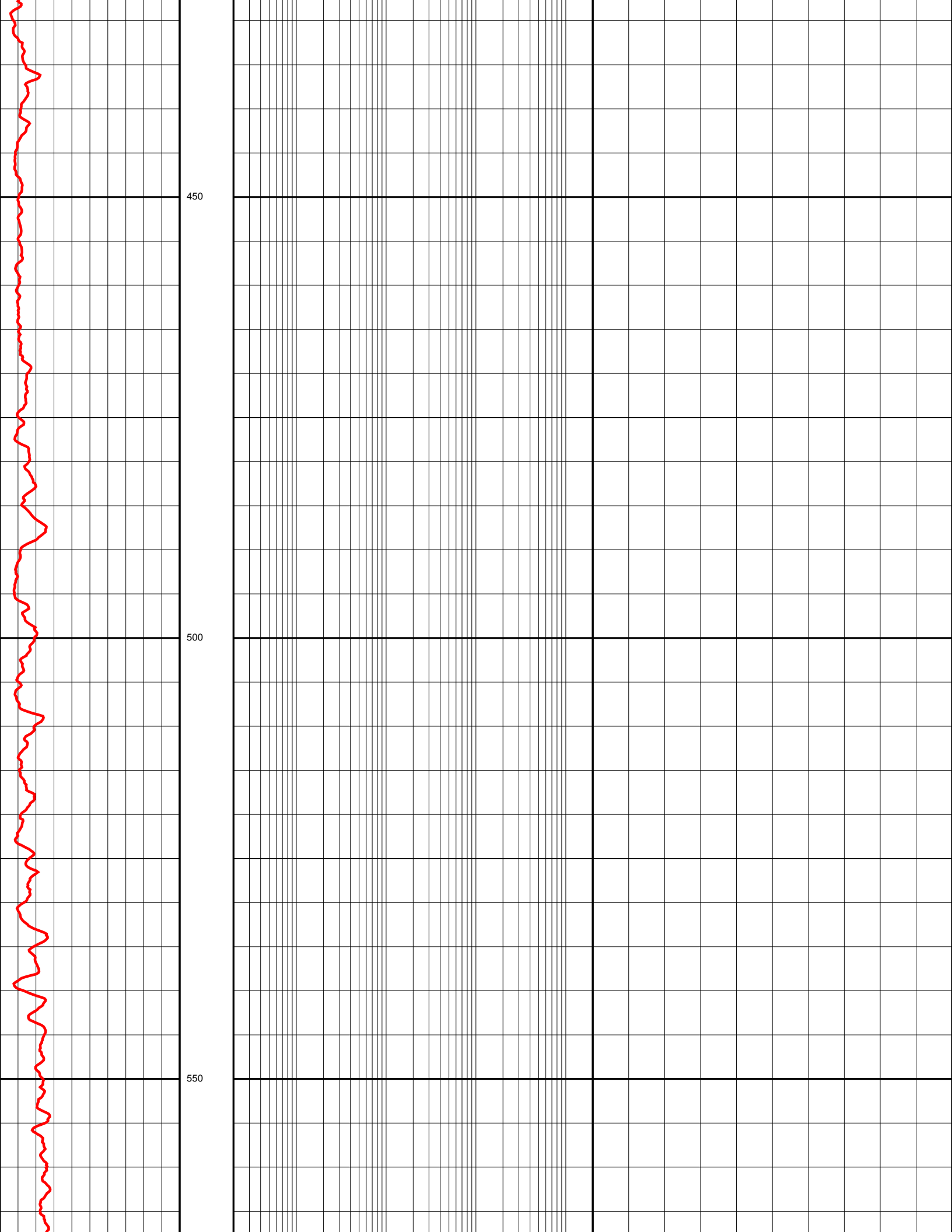


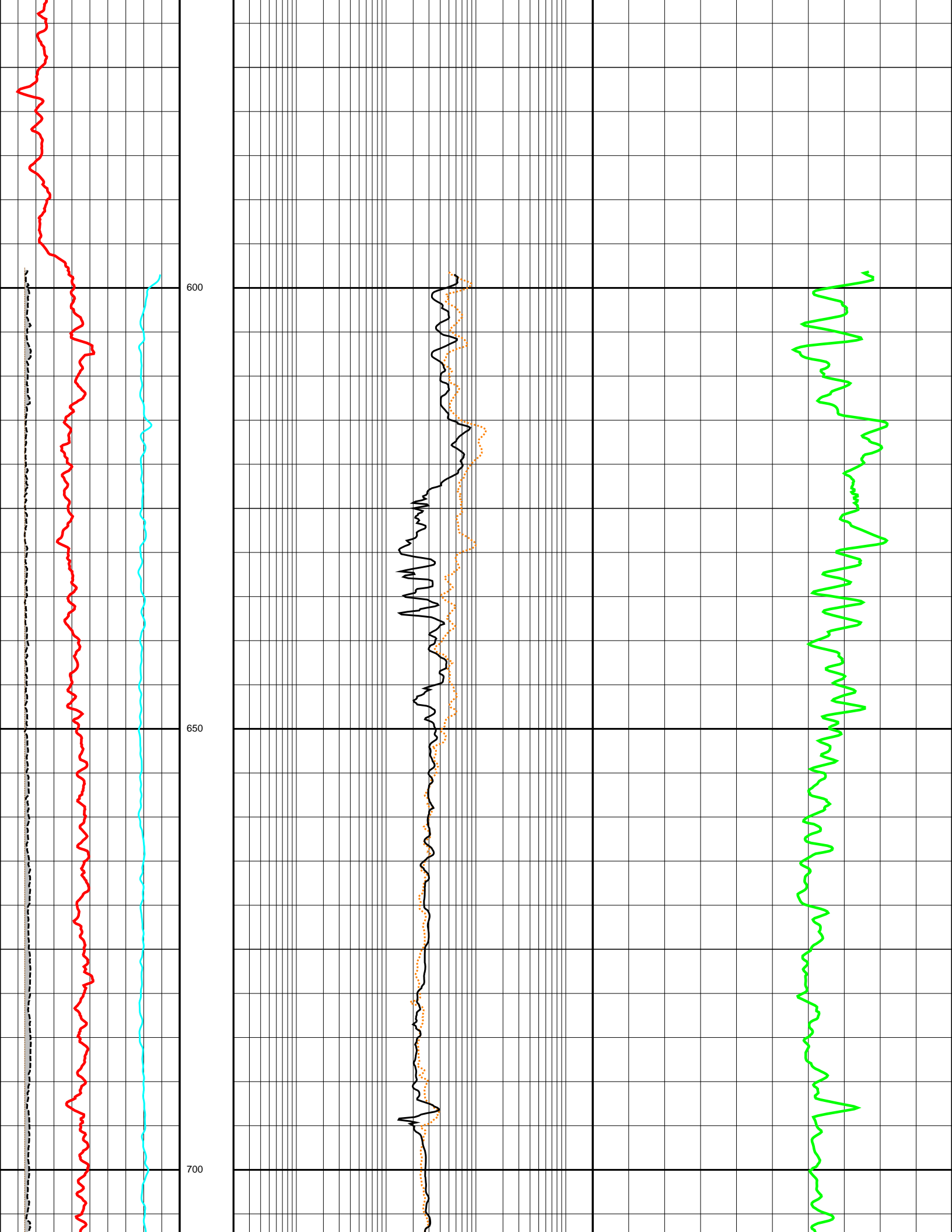
50

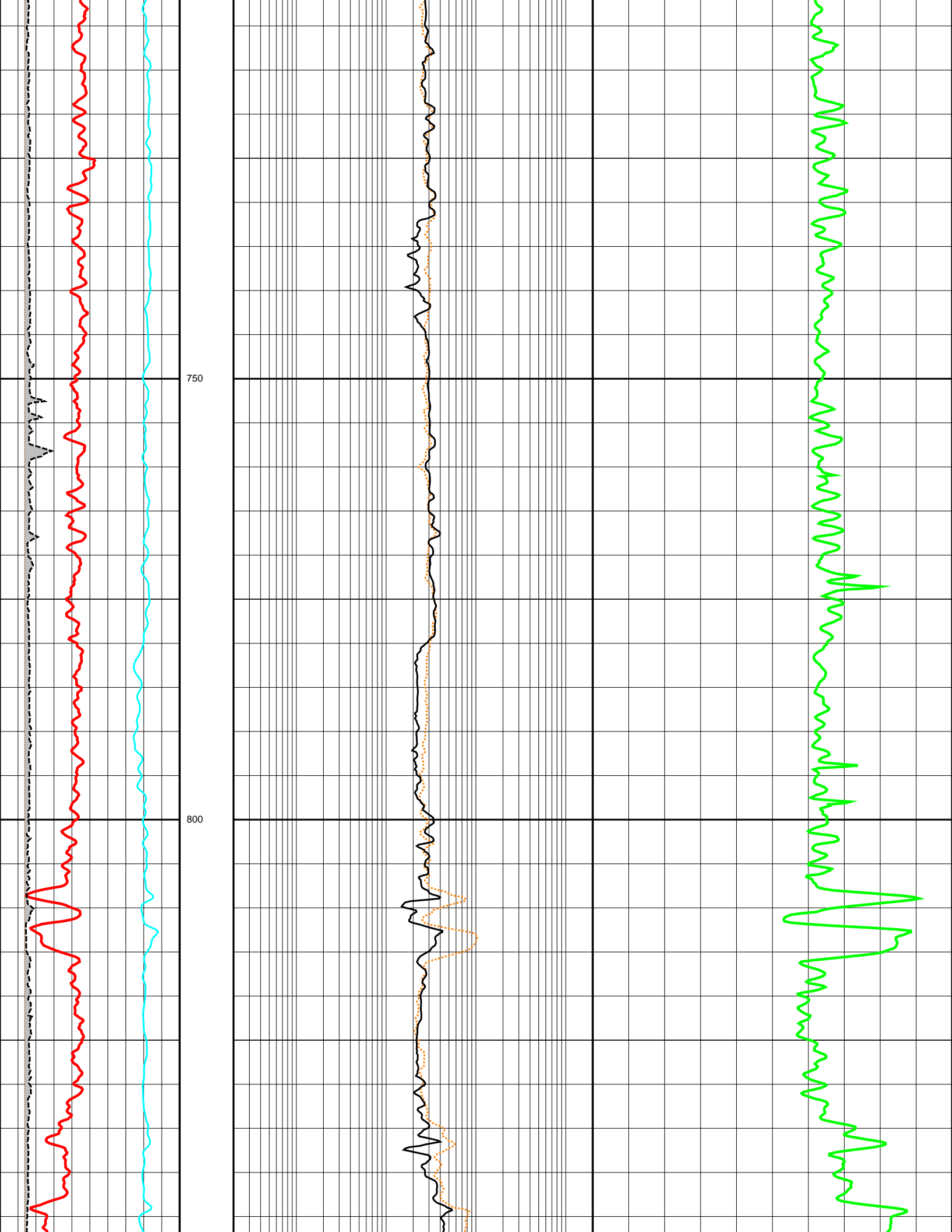
100

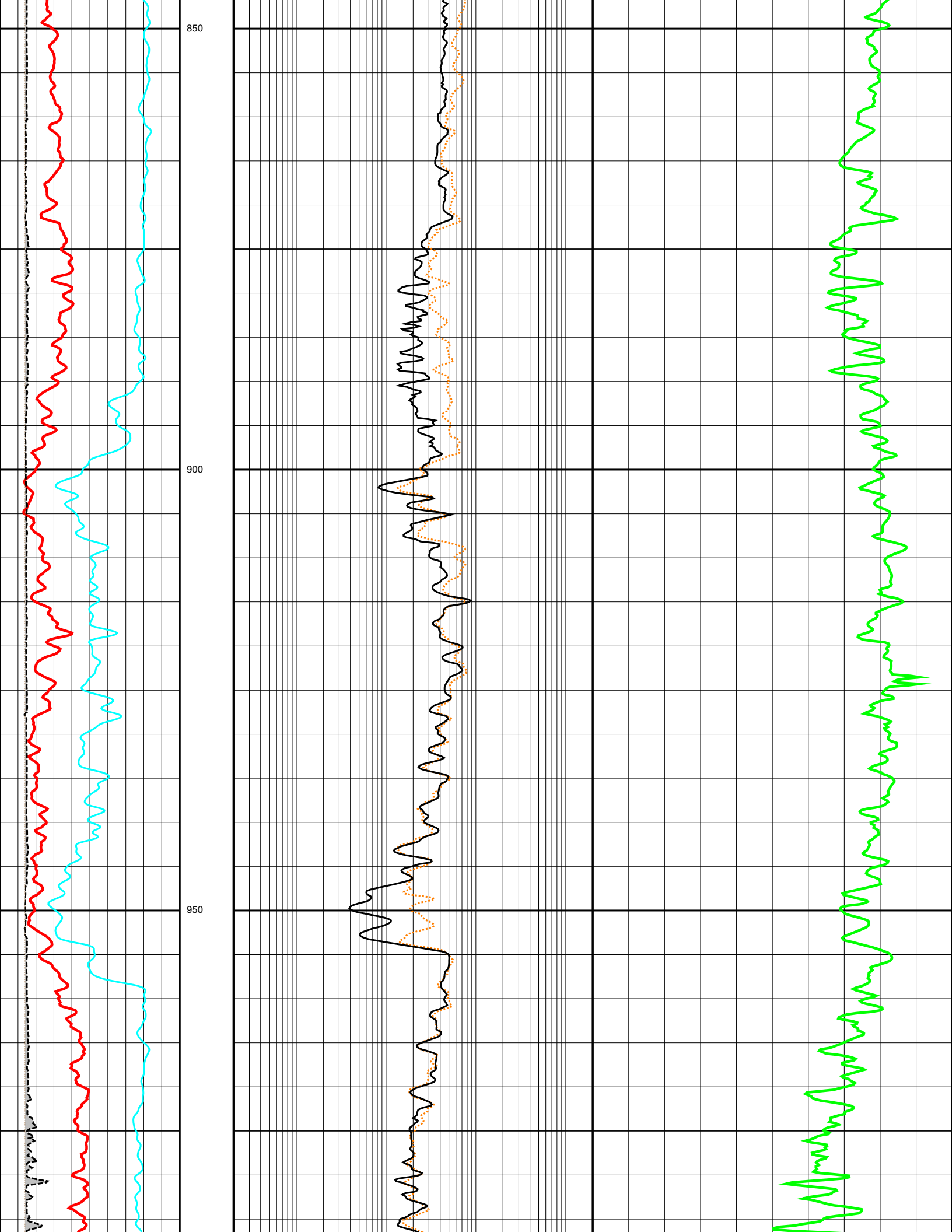


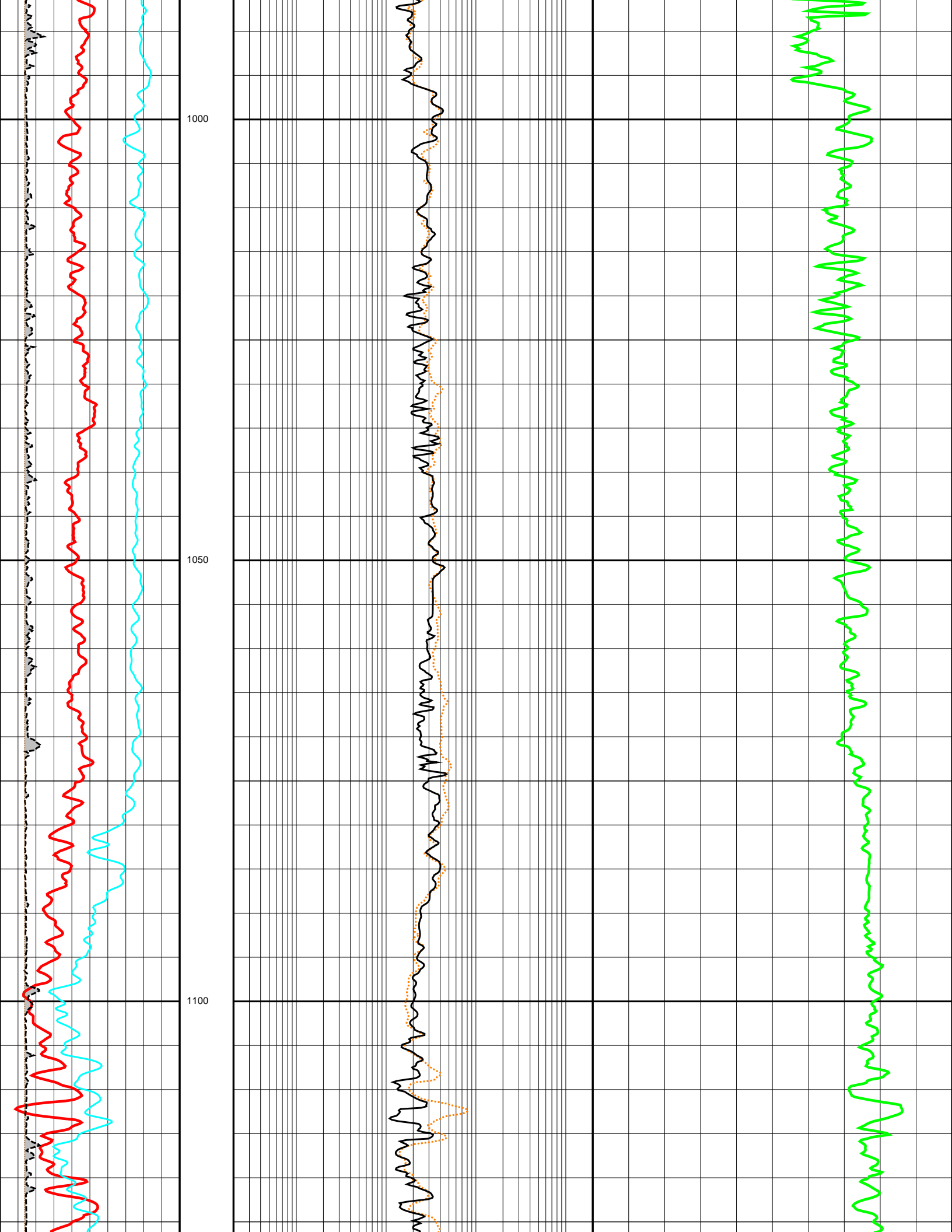


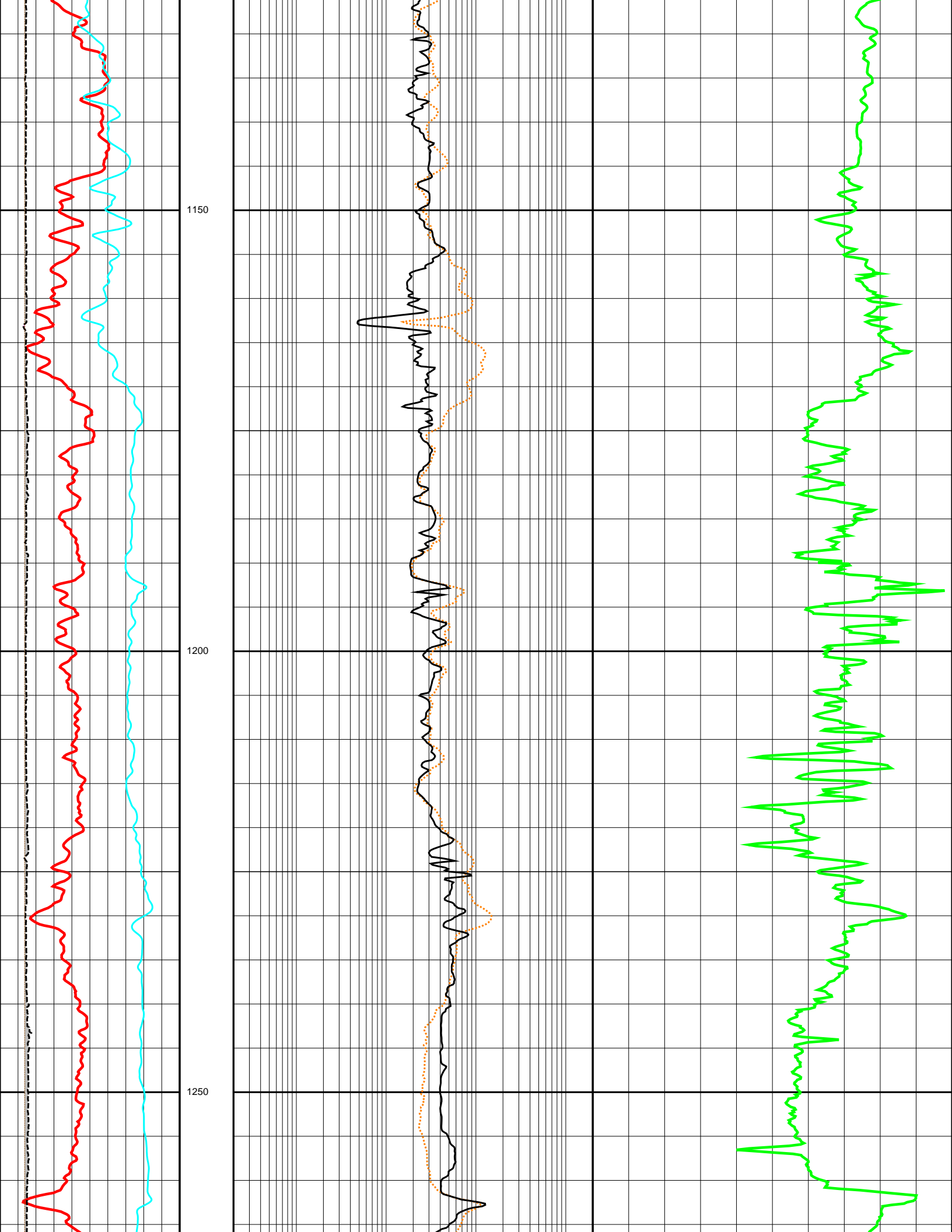


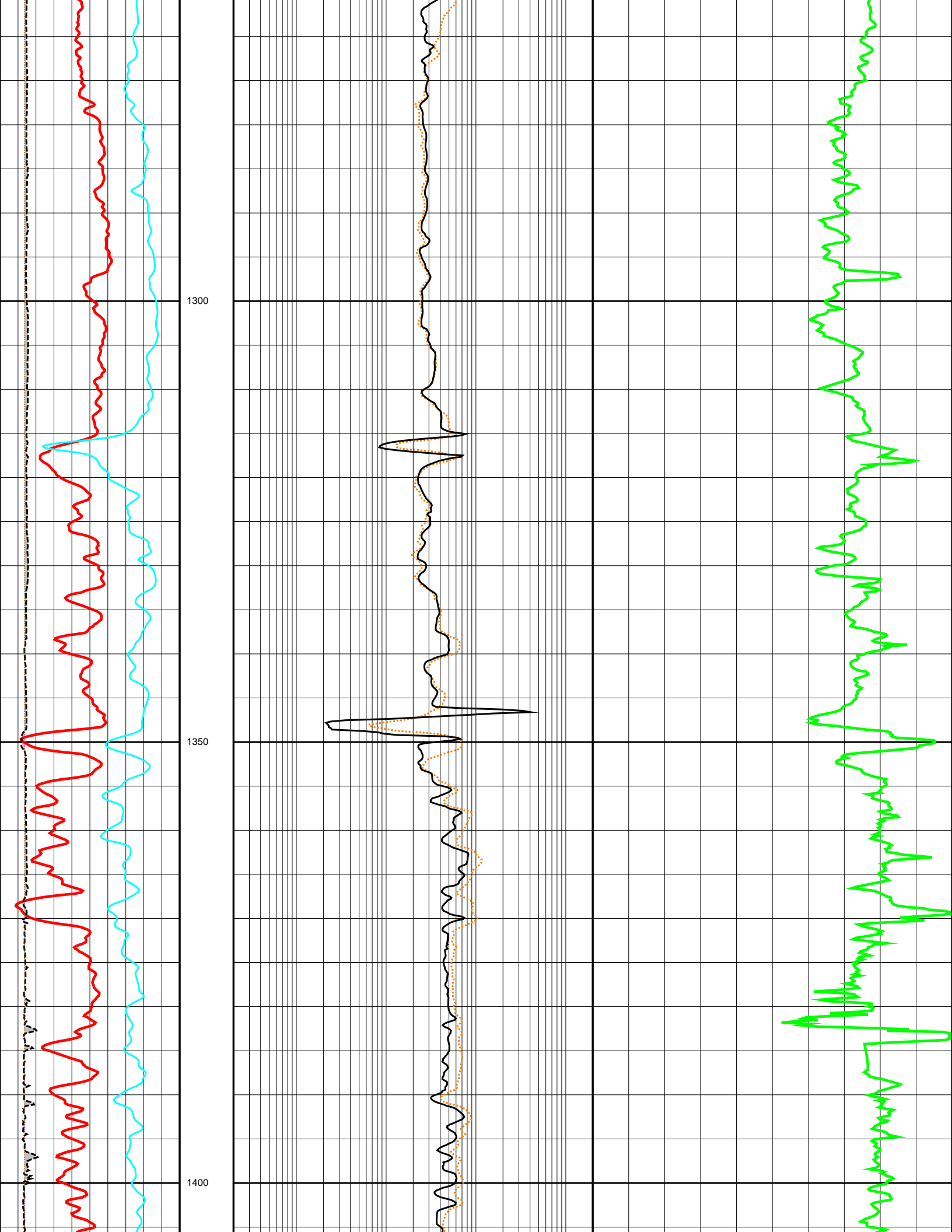


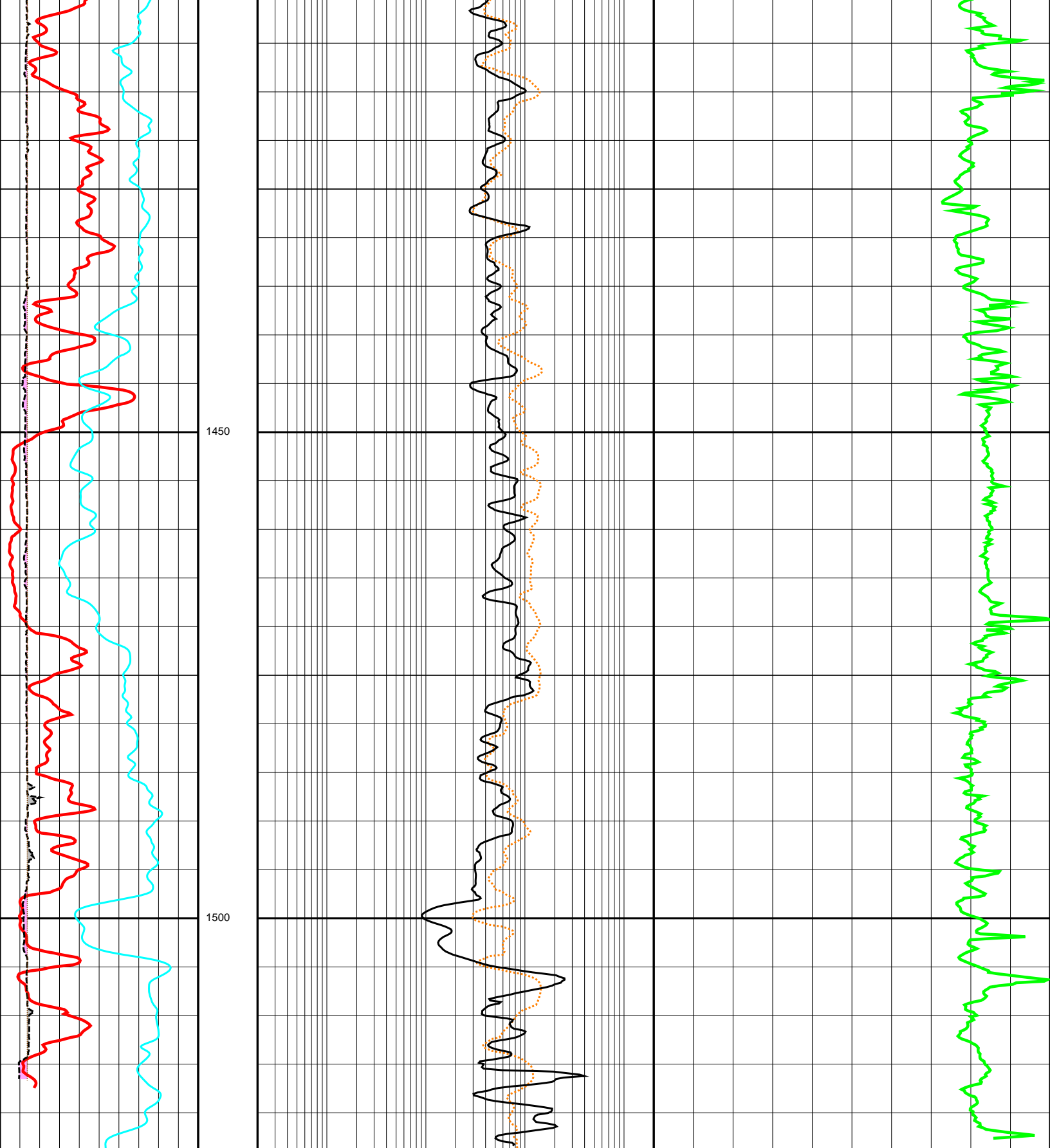












0.0	GR (API)	200.0	DEPTH	0.2	SN (OHMM)	2000.0	140.0	DT (US/F)	40.0
6.0	CALI (INCH)	26.0	M	0.2	IND (OHMM)	2000.0			
-80.0	SP (MV)	20.0	1:50						
6.0	BS (INCH)	26.0							